

# STREGATA — CANTIERE DEL PARDO



**Builder:** CANTIERE DEL PARDO

**LOA:** 48' 10" (14.88m)

**Year Built:** 2007

**Beam:** 14' 11" (4.55m)

**Model:** Cruising Sailboat

**Min Draft:** 7' 5" (2.26m)

**Price:** PRICE ON APPLICATION

**Location:** Italy

Our experienced yacht broker, Andrey Shestakov, will help you choose and buy a yacht that best suits your needs **STREGATA — CANTIERE DEL PARDO** from our catalogue. Presently, at Shestakov Yacht Sales Inc., we have a wide variety of yachts available on our sale's list. We also work in close contact with all the big yacht manufacturers from all over the world.

If you would like to buy a yacht **STREGATA — CANTIERE DEL PARDO** or would like help answering any questions concerning purchasing, selling or chartering a yacht, please call **+1(954)274-4435**

# TABLE OF CONTENTS

TABLE OF CONTENTS	2
SPECIFICATIONS	4
Overview	4
Basic Information	4
Dimensions	4
Speed, Capacities and Weight	4
Accommodations	4
Hull and Deck Information	5
Engine Information	5
DETAILED INFORMATION	6
Owner's Comments	6
Construction	6
Machinery	6
Electrical Systems	7
Plumbing Systems	9
Tankage	9
Navigation Equipment	9
Domestic Equipment	10
Accommodation	11
Cockpit	14
Deck Equipment	14
Exclusions	19
Disclaimer	19
PHOTOS	20
CONTACTS	25
Contact details	25
Telephones	25
Office hours	25

---

Address

25

---

# SPECIFICATIONS

---

## Overview

---

Good looking Judel/Vrolijk with new electronic widgets and in gleaming good shape. Excellent cruiser racer that does both beautifully.

## Basic Information

---

**Category:** Cruising Sailboat

**Sub Category:** Cruising/Racing Sailboat

**Model Year:** 2007

**Year Built:** 2007

**Country:** Italy

## Dimensions

---

**LOA:** 48' 10" (14.88m)

**LWL:** 43' 3" (13.18m)

**Beam:** 14' 11" (4.55m)

**Min Draft:** 7' 5" (2.26m)

## Speed, Capacities and Weight

---

**Displacement:** 28660.09406 Pounds

**Water Capacity:** 121.51914392 Gallons

**Fuel Capacity:** 76.60989508 Gallons

## Accommodations

---

**Total Cabins:** 3

**Total Berths:** 8

**Total Heads:** 2

---

## Hull and Deck Information

---

**Hull Material:** GRP

**Deck Material:** GRP

**Hull Finish:** Polyethylene

**Hull Designer:** Judel & Vrolijk - P. Roseo

---

## Engine Information

---

**Engines:** 1

**Manufacturer:** Volvo

**Model:** D2

**Engine Type:** Inboard

**Fuel Type:** Diesel

---

# DETAILED INFORMATION

---

## Owner's Comments

---

It will be hard to part with STREGATA. In her company I have enjoyed some of the most memorable moments in the last five years. It was as if time stopped the moment we stepped aboard, leaving our too busy lives on hold. We will never forget, but now it is time for someone else to make their everlasting memories.

## Part 1 Registered UK Vessel

### Construction

---

*RCD Status: The Grand Soleil 50 conforms with the essential safety requirements of Directive 94/25EC (Recreational Craft Directive) and is categorised A – “Ocean”*

#### *Hull, Deck & Superstructure Construction:*

- Hull and deck are built in a sandwich construction of vinylester and polyester resin and biaxial e-glass fabric.
- Further reinforcements are positioned in high stress areas.
- Solid laminate is used around keel, rudder and through-hull fittings for maximum strength.
- Hull and deck are bonded together using special structural acrylic glue coming from aircraft construction.
- Internal grid in galvanised steel glued with the same acrylic glue and bonded to the hull.
- This grid absorbs the load of the keel, shrouds and mast.
- Deck, coachroof and cockpit bottom covered by teak.

#### *Keel & Rudder:*

- Lead keel (2.3m draft option).

## Machinery

---

### *Engine & Gearboxes:*

- Excellent access is provided through removing the sides and opening the companionway stairs top hinges.
- 1 x Volvo D2 75hp (upgrade option) diesel engine with S-drive transmission.
- Engine room insulation made of flameproof material chosen for both heat and sound insulation.
- Pipes for engine room ventilation.
- Silencer.

### *Maintenance & Performance:*

- Engine Hours: Approx. 1,144 as of 21/12/15.
- Last serviced: April 2015.
- Engine Hours: to be confirmed.

### *Propulsion & Steering:*

- Twin steering wheel covered by leather with mechanical transmission, stainless steel handhold and illuminated compasses (compasses replaced August 2012, calibrated June 2014).
- Engine control lever.
- Engine control panel in the cockpit with hours meter.
- Max-Prop propeller, 21 inch diameter 3 blades, set 22 degrees, cushioned int. hub.
- Max-Power compact/retractable bow thruster with control on starboard binnacle in stainless steel housing.

---

## **Electrical Systems**

---

### *Voltage Systems:*

- Particularly safe and secure construction; all wirings and cables are passing in special internal channel tubes and relative deviation boxes for an eventual easy exchange of wirings.
- Main electric control panel for 220v and 12v sections with magneto dynamic switches;

located at navigation station; includes:

1. Cut-out switches.
  2. Voltmeter.
  3. Ampere meter showing the services consumption.
  4. Battery charging rate ampere meter.
- 12v/220v sockets in galley, chart table and owner's cabin.

*Battery Banks:*

- 3 x 100ah/12v marine batteries for services, renewed June 2014.
- 1 x 70ah/12v for engine starter, renewed June 2014.

*Battery Chargers:*

- Automatic battery charger 60ah.

*Alternators:*

- 115ah alternator for batteries.

*Generator:*

- Fischer Panda diesel generator 3.5kw.
- Generator Hours: Approx. 825 as of 21/12/15.
- Date of last service: April 2015.

*Shore Power:*

- 220v Shore power and predisposition for automatic battery charger.
- RCD's and ring main.
- UK and European sockets throughout.



---

## Plumbing Systems

---

### *Fresh Water & Water Heating System:*

- RV pressurized hot and cold water system.
- Calorifier located between the two aft cabins working with 220v and engine cooling system.

### *Bilge Pumps:*

- 1 x Manual bilge pump.
- Separate bilge for engine room.
- 1 x Electric bilge pump.

---

## Tankage

---

### *Fuel:*

- 1 x Stainless steel tank with total capacity of 290 litre.
- Electric level indicator.
- Fuel gauges.

### *Fresh water:*

- 1 x Rigid polyethylene water tank with total capacity of 460 litres.
- Electric level indicator.
- Water gauges.

### *Grey/Blackwater holding tanks:*

- 1 x Total capacity of 65 litres holding tank with electrical exhaust pump for forward heads.

---

## Navigation Equipment

---

- Raymarine i50 multifunction display x 2 no, new October 2015.

- Raymarine i60 multifunction display x 2 no, new October 2015.
- Raymarine E15023 smart pilot controller, new October 2015.
- Ramarine Radar, new October 2015.
- Raymarine 650 AIS receiver and transmitter with Splitter 100, new October 2015.
- Raymarine 54E DSC VHF with external loudspeaker.
- Raymarine E120 Multifunction Navigation Display with 12.1" sunlight viewable colour display at chart table.
- Raymarine E80 Multifunction Navigation Display mounted on cockpit table.
- Raystar GPS antenna 120 seataalk.
- Icom 166 handheld VHF.
- Echomax active radar reflector.
- Schertz clock.
- Schertz barometer.

## Domestic Equipment

---

### *Galley:*

- Double stainless steel sink.
- Pressurised hot and cold fresh water.
- Rubbish bin.
- Force 10 stainless steel up-graded cooker, 3 burners, grill and oven.
- Isotherm top access fridge compartment with baskets and 12v compressor.
- Second fridge with front access.

### *Heads/Showers:*

- Hot/Cold shower on electrically opening transom.
- 1 x Jabsco marine toilet in aft heads compartment.

- 1 x Jabsco electric toilet in forward heads compartment.
- 2 x Showers.
- 2 x Wash basins, pressurized hot and fresh water.
- Electric pumps to drain both shower bilges.

#### *Heating & Ventilation:*

- Webasto cabin heating system (inc. Outlet in wet locker).
- 4 x Deck hatches.
- 4 x Opening saloon lights.

#### *Entertainment:*

- Sony marinised DVD/TV/CD player at chart table with ipod link.
- Samsung flat screen TV to main bulkhead.

#### *Lighting:*

- Halogen and incandescent lamps ensure adequate lighting for all the interior.
- Navigation, anchor, running, deck flood, compass and instrument lights.

---

## **Accommodation**

---

#### Summary of Accommodation:

- The interior joinery is stained mahogany which has been treated with polyurethane and then buffed to a shine.
- The interior boasts an excellent caliber of finishing throughout.
- Microfibre fabrics.
- 6 x Opening hatches for light and ventilation.
- Opening portholes in galley, saloon, aft toilets, chart table and aft cabins.

- 2 x Extra opening portholes for aft cabins.
- Chrome UK 3-pin sockets for owner's cabin, galley and navigation area.

*Description of layout from forwards:*

*Sail Locker:*

- Accessible from the deck through a large hatch with steps.

*Forward Master Cabin:*

- King size double bed with large stowage underneath accessible thanks to drawers.
- Side carry-all shelves.
- 2 x Very large hanging lockers with shelves.
- Reading seats on both sides.
- 2 x Reading spots.
- Opening hatches.
- 12v and 220v plugs.

*Forward Head:*

- Mirror/bathroom cabinet.
- Shower in separate compartment.
- Opening hatches.
- Forward heads bulkhead to shower area to be recovered in light wipe clean surface.
- Reconstituted stone finish.

*Main Saloon:*

- Exceptionally wide, light and airy.

- C shaped sofa with large table including a bar.
- Second sofa on starboard which can be used as a sea berth.
- Stowage rack.
- Numerous side lockers.
- Bookshelves.
- Bar.
- Handholds.

#### *Navigation Station:*

- Large, lifting top chart table with storage space for nautical charts.
- Electronic and communication instruments panel.
- Chart spotlight.
- Navigator seat.
- 12v and 220v plugs.
- 12v plug at chart table.

#### *Galley:*

- Hinged door.
- Lockers above the working plan.
- Galley working plan covered with synthetic stone.
- Drawers incorporated into galley to RHS of sinks (as per Grand Soleil 45).

#### *Aft Head:*

- Mirror/bathroom cabinet.
- Oilskin hanging locker with drain to the heads' bilge.
- Reconstituted stone finish.

### Port Side and Starboard Aft Cabin:

- Large space in the area at the head of the bed.
- Double bed.
- Hanging locker.
- Shelves.
- Seat.
- Ventilation and light is provided by an opening porthole and an opening hatch.
- Ceiling light and 2 x reading spots.
- Access to engine room, fuel and water tanks.

## Cockpit

---

- Large, deep and particularly well protected.
- Uninterrupted view of foredeck.
- All halyards, sheets and reefing lines are led back to the cockpit.
- Self draining.
- Cockpit seats and bottom covered by teak.
- Waterproof 12v DC power socket.
- Anchor windlass remote control.
- 2 x White loudspeakers.
- Cockpit side locker gas struts.
- Set cockpit padlocks.

## Deck Equipment

---

### *Rig:*

- Sparcraft performance anodized 3 spreader fractional rig.

- Furlex M400S genoa furling system. New May 2014.
- 4 x Leading organisers with five sheaves.
- 7 x Spinlock clutches for reefing lines and halyards. New May 2014.
- Halyards and reefing lines are hidden under the deck between mast collar and clutches.
- Dyneema mainsail halyard, new May 2014.
- 2 x Harken genoa tracks with cars.
- Harken main sheet track with ball bearings sliding car.
- Top rig Sparcraft mast with 3 x swept back double spreaders.
- Mast is stepped on the galvanised steel grid.
- Both mast and boom are made out of light alloy, oversized to ensure the utmost safety.
- Mast comes with:
  1. Boom topping lift.
  2. 2 x Reefing lines and one clew outhaul.
  3. Boomvang.
  4. Mechanical Harken backstay adjuster.
  5. Masthead steaming and running light.
  6. Deck flood light.
- Complete set of blocks.
- Gennaker deck gear.
- Sheets and blocks for gennaker. Dyneema spinnaker sheets new May 2014.
- Rigid vang.
- Lazy jacks and stack pack for mainsail.
- 2 x Mast rungs.

#### *Winches:*

- 2 x 48.2 STA Harken winches for halyards, main sheet, reefing lines etc.

- 2 x 70.2 STA Harken 2 speed electric winches for genoa sheets.
- Electric winch on coachroof 48.2 on main halyard/mainsheet side.
- 2 x Winch handles.
- 2 x Winch handle covers.

#### *Sails:*

- GBR sail number allocation.
- 2 x Jib sheets.
- 2 x Purchases for main traveler.
- North UK Sails:
  1. North tri-radial mainsail.
  2. Norlam fully-battened with 3 reefs.
  3. Fredericksen mast track and ball-bearing luff-sliders.
  4. North tri-radial Norlam furling genoa 106% with padded luff and vertical leach battens.
  5. North code zero furling gennaker Norlon with Bartell furling drum and Harken top-swivel.

#### *General:*

- Open bow pulpit with navigation lights.
- Stainless steel bow fitting with one chain roller.
- Forestay chain plate under the deck level.
- Sail locker.
- 2 x Shrouds chain plates.
- Teak toe rail.
- 2 x Deck filler caps for fuel and water.
- Sliding hatch for companion way.
- 2 side cockpit lockers.



- 2 x Aft cockpit lazarettes.
- Electrically opening transom with hot/cold cockpit shower and bathing ladder (including remote control, new 2014).
- Split backstay chain plate with mechanical adjuster.
- Pushpit with navigation light and flag support.
- Emergency tiller.
- Owner's manual and CDP briefcase.
- Windex.
- Opening side-gate in the guardrail on starboard.
- Opening side-gate in the guardrail on port side.
- 1 x Gas bottle plus spare.
- LED pulpit and pushpit navigation lights.
- Masthead TV 12v antenna and run cable to base of mast internally.
- Stainless steel companionway grab rails as per new.
- Teak cockpit table with removable fiddle plus Raymarine E80 Multifunction Navigation Display.

#### *Anchoring & Mooring Equipment:*

- Nomen folding cleats; bow, stern and mid-ship.
- Anchor locker with reversing electric anchor windlass with remote control.
- Windlass emergency handle.
- Stainless steel anchor. 55 meter chain. 10mm. Additional 50mt chain new 2014.
- 2<sup>nd</sup> Fortress anchor e23 kg with 10mt of 8mm galvanized chain and 60mt Maffioli warp, new 2014.
- 6 x Large fenders.
- 8 x Navy mooring lines.

---

*Covers, Canvas & Cushions:*

- Garage designed for storing sprayhood.
- Hatch covers.
- Sprayhood in blue.
- 2 x Blue steering wheel covers.
- Blue cover for furling genoa.
- Internal mast cover in white.
- Dark blue boom cover.
- Blue cover for cockpit table.
- Full sun awning, light grey, new August 2014.

*Safety Equipment:*

- Double lifelines with stainless steel stanchions.
- First aid kit.
- 1 x White MOB rescue sling.
- 2 x Horse shoe life rings with strobe lights and batteries.
- 1 x Danbuoy.
- 6 man Ocean Safety life raft in valise (2011) plus Solas B pack.
- EPIRB McMurdo G5 Smartfinder, new June 2014.
- 2 x Safety lines.

*Fire-fighting equipment:*

- FirePro auto gas fire extinguisher to engine bay, plus 2 x manual ABC extinguishers to cabins.
- Fire blanket.
- Remote fuel cut off.

- 2 x 1kg Fire extinguisher in saloon.

---

## Exclusions

---

Owner's personal belongings.

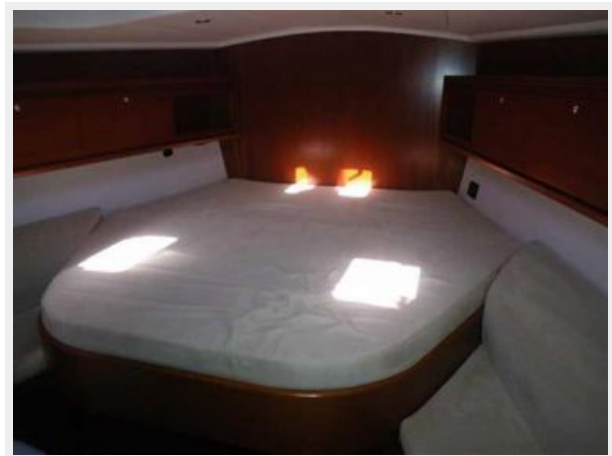
---

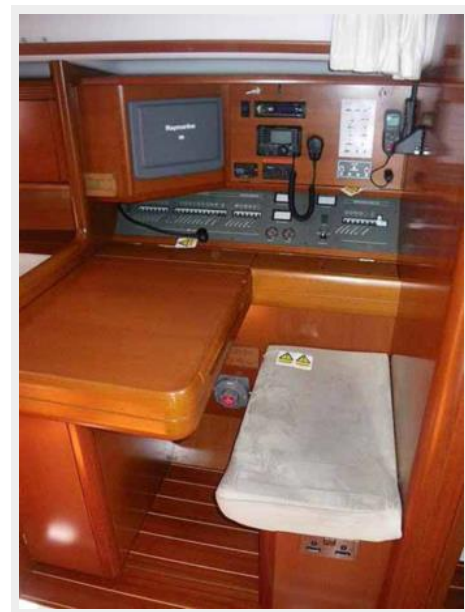
## Disclaimer

---

The Company offers the details of this vessel or yacht in good faith but cannot guarantee or warrant the accuracy of this information nor warrant the condition of the vessel. A buyer should instruct his representatives, agents, or his surveyors, to investigate such details as the buyer desires validated. This vessel or yacht is offered subject to prior sale, price change, or withdrawal without notice.

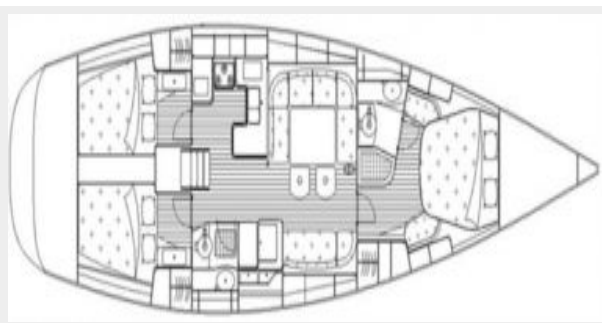
# PHOTOS













# CONTACTS

---

Andrey Shestakov, leading yacht broker of the sales department of Shestakov Yacht Sales Inc. Shestakov Yacht Sales Inc., the official representative of the Miami/Fort Lauderdale FL headquarters.

## Contact details

---

Email: [andrey@shestakovyachtsales.com](mailto:andrey@shestakovyachtsales.com)

Web: [shestakovyachtsales.com/en/](http://shestakovyachtsales.com/en/)

## Telephones

---

USA: +1(954)274-4435

## Office hours

---

Monday – Saturday: **9:00 - 21:00** EDT

Sunday: **closed**

## Address

---



Harbour Towne Marina, 850 NE 3rd St,  
STE 213, Dania, FL 33004