

NEENAH — VIKING



Судостроитель: VIKING

Год постройки: 2014

Модель: Катер для спортивной рыбалки

Цена: **ЦЕНА ЯХТЫ ПО ЗАПРОСУ**

Местонахождение: United States

Длина общая: 66' 0" (20.12m)

Ширина: 19' 1" (5.82m)

Макс. осадка: 5' 5" (1.65m)

Купить Neenah — VIKING а также выбрать подходящую вам яхту из нашего каталога яхт вам поможет опытный яхтенный брокер Андрей Шестаков. На сегодняшний день компания Shestakov Yacht Sales Inc. имеет большое количество яхт в собственном списке продаж, а также тесно сотрудничает со всеми крупными яхтенными производителями по всему миру.

Для того чтобы купить яхту Neenah — VIKING а также проконсультироваться по любому вопросу связанному с покупкой, продажей, чартером яхт позвоните по телефону **+7(918)465-66-44**.

ОГЛАВЛЕНИЕ

ОГЛАВЛЕНИЕ	2
ХАРАКТЕРИСТИКИ	6
Обзор	6
Основная информация	6
Размеры	6
Скорость, вместимость и масса	6
Размещение	6
Корпус и палуба	6
Информация о двигателе	7
ПОДРОБНОЕ ОПИСАНИЕ	8
Accommodations & Layout	8
Master Suite	8
Forward Guest Suite	8
Starboard Guest Suite	8
Crew Area/Additional Guest Suite	8
Companionway	9
Flybridge	9
Electronics & Navigational Equipment	9
Cockpit	9
Fishing Equipment	9
Deck Equipment	10
Electrical System	10
Engine Room & Mechanical Equipment	10
Engine Room	10
Decor	10
Quick Reference Viking Option Summary	10
Disclaimer	11
Исключения	11

Отказ от ответственности	11
ФОТОГРАФИИ	12
2015 66 Viking	12
2015 66 Viking	12
Salon	12
Salon	12
Salon	12
Salon	12
Galley	13
Galley	13
Dinette	13
Galley	13
Laundry	14
Dinette	14
Pantry	14
Day Head	14
Master Stateroom	15
Master Stateroom	15
Master Stateroom	15
Master Stateroom	15
Master Stateroom	16
Master Head	16
Master Head	16
Master Head	16
Forward Stateroom	17
Forward Stateroom	17
Forward Stateroom	17
Forward Stateroom	17
Forward Head	18

Starboard Guest Stateroom	18
Starboard Guest Stateroom	18
Starboard Guest Head	18
Aft Starboard Guest Stateroom	19
Aft Starboard Guest Head	19
Cockpit	19
Cockpit	19
Cockpit	19
Cockpit	19
Cockpit	20
Flybridge	20
Flybridge	20
Flybridge	20
Flybridge	20
Flybridge	20
Flybridge	21
Flybridge	21
Cockpit/GYRO	21
Engine Room	21
Engine Room	21
Engine Room	21
Engine Room	22
Engine Room	22
Engine Room	22
Engine Room	22
Engine Room	22
Engine Room	23
Engine Room	23
Bow	23
Stern	23

КОНТАКТЫ	24
Контактная информация	24
Телефоны	24
Время работы	24
Адрес	24

ХАРАКТЕРИСТИКИ

Обзор

Основная информация

Тип судна: Катер для спортивной рыбалки

Подкатегория: Convertible

Модельный год: 2015

Год постройки: 2014

Страна: United States

Открытая палуба мостика: Да

Кубрик: Да

Размеры

Длина общая: 66' 0" (20.12m)

Ширина: 19' 1" (5.82m)

Макс. осадка: 5' 5" (1.65m)

Скорость, вместимость и масса

Водоизмещение: 102875 Pounds

Вместимость воды: 340 Gallons

Вместимость сточного бака: 210 Gallons **Объем топливного бака:** 2065 Gallons

Размещение

Всего кают: 4

Всего ком. состава: 4

Корпус и палуба

Материал корпуса: Fiberglass

Информация о двигателе

Двигатели: 2

Производитель: MTU

Модель: 16V2000 M91

Тип двигателя: Inboard

Тип топлива: Diesel

ПОДРОБНОЕ ОПИСАНИЕ

Accommodations & Layout

Main Deck

The layout on the 66 Viking is the envy of the industry. To starboard aft is the L-shaped lounge and cocktail/dining table. Forward is the functional and comfortable 6 place dinette. Opposite is the galley with an island counter, microwave/convection oven, under counter refrigeration, compactor, (2) bar stools and an abundance of door and slide out storage. Aft to port is the entertainment center with a pop-up TV. The convenient day head is aft to starboard and the large L-shaped couch is to starboard.

Master Suite

Located amidships to port is the sumptuous owners suite, highlighted by an athwartship berth (with hinged storage beneath), upgraded entertainment center, large hanging lockers, credenza, and night stands. This beautiful stateroom also offers access immediately aft to the private head with oversized shower.

Forward Guest Suite

A centerline queen berth, flanked by generous storage cabinets invites your guests to relax a while. Comforts include an entertainment center, ample storage in hanging lockers and beneath the hinged berth top, and an overhead hatch for natural light and ventilation if desired. Adjacent aft to port is the very spacious head with a large stall shower.

Starboard Guest Suite

To starboard is another guest stateroom offering custom upper Pullman and standard lower berths, entertainment center and abundant storage. Access is provided aft to a private head with stall shower.

Crew Area/Additional Guest Suite

Aft to starboard is a stateroom featuring custom upper Pullman and standard lower berths, TV, large hanging lockers and credenza. Adjoining is a private head with stall shower.

Companionway

Access to all staterooms, laundry center, central vacuum system and bilge access is provided via the companionway.

Flybridge

The command center was designed for ease of operation and total cruising/fishing comfort. With three custom seats at the helm, and lounge seating port, starboard and forward with upgraded upholstery, your entire party will be comfortable here. Electronics and controls are cleverly installed in a retractable drop down box, and easy access compartments that close to conceal and protect the equipment. The entire flybridge is topped off with a beautiful Palm Beach Towers tuna tower. Custom rod storage is incorporated into the port and starboard seats. Optional helm air conditioning is included as well as (3) upgraded Release helm seats.

Electronics & Navigational Equipment

Furuno 25KW 96 mile radar, Furuno Navnet, (3) 17" KEP monitors, Garmin 8208 plotter with weather upgrade, Furuno FCV 1200BB color sounder, Garmin GSD-26 CHIRP sounder, Simrad Ap24 autopilot, (2) STB Horizon VHF radios, Furuno AIS, stereo, Tracphone V3 SAT phone, engine room cameras, Outrigger camera system, FLIR M625L system, KVH Tracvision HD7 Sat TV North, Central and South American capable, Garmin 8208 plotter in tower along with VHF and Furuno RD33 data organizer. SIERAA wireless cellular internet, rogue wave wifi booster, mini Vsat satellite internet, GOST monitoring system

Cockpit

The very comfortable mezzanine seating is forward and features custom cushions and refrigeration under the seats and step. The entry step is refrigerated and access to the full length fishboxes is through fiberglass hatches in the cockpit sole. The Eskimo dumps into the mezzanine box.

Fishing Equipment

Bait freezer, Palm Beach Towers tuna tower, live fish well in deck, Rupp triple spreader outriggers, (6) rod rocket launcher aft bridge rail, Release fighting chair, center rigger, Eskimo ice machine, 12V & 24V outlets under coaming, freezer storage in mezzanine seat, cocking overhang, transom coaming with gate and live well in transom fish box. Miya Epoch teaser reels, bait trays in freezer, (4) Release boltless rod holders.

Deck Equipment

Transom door, spreader lights, navigation lights, bow rail, bow pulpit, Lewmar C4 electric windlass, fresh water, salt water, pressure deck wash down system, teak mezzanine decking, black mask, fresh water deck wash down inside anchor locker.

Electrical System

24v DC electrical system, (2) automatic battery chargers, 110v/220v AC electrical system, (2) 50amp/250v dockside cords, (2) independent 24v battery banks mounted in fiberglass storage boxes, (2) Cablemasters, voltage stabilizer transformers, Octoplex power distribution system, (1) Onan QD 21.KW generator, (1) Onan QD 27.5 kw generator

Engine Room & Mechanical Equipment

Trim tabs, custom tool box, fuel priming pumps, oil transfer system, fire control system, dual Racor fuel filters, Viper steering system, oil temperature alarm, engine fuel shut-off valve, access to crew quarters, dual power steering pumps, fire alarm, smoke alarm, (2) bilge blowers, oil pressure alarm, engine synchronizers, raw water sea strainers, engine temperature alarm, thermal and acoustical insulation, Y-valve emergency bilge pump, gauge package at engine room entry, CO2 automatic, 1400 gallons per day water maker with automatic back flush, all bilges, pumps, filters, strainers & brass thru hulls awlgripped snow white, automatic-manual bilge pumps, bow thruster with controls in the control handles, Delta T engine room ventilation system, oil change system plumbed to cockpit deck box.

Engine Room

Designed with ease of maintenance in mind, and finished to yacht quality, the engine room and mechanical spaces are white glove clean.

Decor

Liberal use of granite, custom wallpaper, accents, numerous décor upgrades & mattress upgrades are a few of the special features that make this Viking a very special offering.

Quick Reference Viking Option Summary

SEAKEEPER GYRO, extra fuel capacity, 1400GPD Watermaker, Release teak helm pod, black mask, electric bow thruster, day head, carpet runners, Willy Vac system, Bow pulpit with Lewmar

anchor windlass, refrigerated cockpit step box, refrigerated drink box on flybridge, helm air conditioning, large freezer on flybridge, crew access door in engine room, "Cool Breeze" Mezzanine air system, (3) Custom Release flybridge seats, additional 46" TV in salon over dinette, underwater lights

Disclaimer

In April 2017 the thermostat switch for the cockpit freezer was replaced by a subcontractor. In late May 2017, while in the Bahamas, a slow burn occurred in the area of the new thermostat. The crew noticed a strange smell, investigated, and extinguished it. After the trip, the vessel was taken to the Viking Yacht Service center where new wiring, switch panel, and mezzanine freezer were replaced. New batteries were also installed at that time.

Исключения

При продаже яхты исключаются личные вещи владельца.

Отказ от ответственности

Компания предоставляет описание судна или яхты добросовестно, но не может гарантировать точность этой информации, а также не ручается за техническое состояние. Покупатель должен проинструктировать своих агентов или оценщиков исследовать представленную информацию более подробно, по собственному желанию. Продажа судна или яхты, изменение цены или снятие с продажи будет происходить без предварительного уведомления.

ФОТОГРАФИИ

2015 66 Viking



2015 66 Viking



Salon



Salon



Salon



Salon



Galley



Galley



Galley



Dinette



Dinette



Laundry



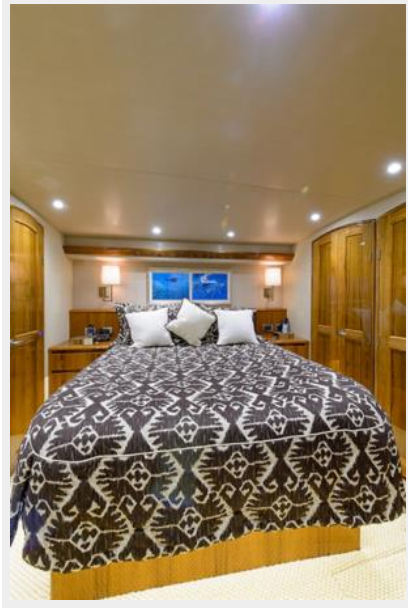
Pantry



Day Head



Master Stateroom



Master Stateroom



Master Stateroom



Master Stateroom



Master Stateroom



Master Head



Master Head



Master Head



Forward Stateroom



Forward Stateroom



Forward Stateroom



Forward Stateroom



Forward Head



Starboard Guest Stateroom



Starboard Guest Stateroom



Starboard Guest Head



Aft Starboard Guest Stateroom



Aft Starboard Guest Head



Cockpit



Cockpit



Cockpit



Cockpit



Cockpit



Flybridge



Flybridge



Flybridge



Flybridge



Flybridge



Flybridge



Flybridge



Cockpit/GYRO



Engine Room



Engine Room



Engine Room



Engine Room



Engine Room



Engine Room



Engine Room



Engine Room



Engine Room



Bow



Stern



КОНТАКТЫ

Андрей Шестаков (Andrey Shestakov) – ведущий яхтенный брокер отдела продаж яхт и судов компании Shestakov Yacht Sales Inc. Официальный представитель Shestakov Yacht Sales Inc. для русскоговорящих клиентов в центральном офисе компании в Майами/Форт Лодердейл/Флорида/США.

Контактная информация

Email: andrey@shestakovyachtsales.com

Web: shestakovyachtsales.com

Телефоны

Краснодарский край: **+7(918)465-66-44**

США, Майами, Флорида: **+1(954)274-4435**

Время работы

Понедельник – Суббота: **9:00 - 21:00**
EDT

Воскресенье: **Закрыто**

Адрес



Harbour Towne Marina, 850 NE 3rd St,
STE 213, Dania, FL 33004