

## OUR TRADE — MARITIMO



**Builder:** MARITIMO

**Year Built:** 2013

**Model:** Cruiser

**Price:** PRICE ON APPLICATION

**Location:** United States

**LOA:** 58' 0" (17.68m)

**Beam:** 17' 6" (5.33m)

**Max Draft:** 4' 5" (1.35m)

**Cruise Speed:** 26 Kts. (30 MPH)

**Max Speed:** 31 Kts. (36 MPH)

Our experienced yacht broker, Andrey Shestakov, will help you choose and buy a yacht that best suits your needs **OUR TRADE — MARITIMO** from our catalogue. Presently, at Shestakov Yacht Sales Inc., we have a wide variety of yachts available on our sale's list. We also work in close contact with all the big yacht manufacturers from all over the world.

If you would like to buy a yacht **OUR TRADE — MARITIMO** or would like help answering any questions concerning purchasing, selling or chartering a yacht, please call **+1(954)274-4435**

# TABLE OF CONTENTS

TABLE OF CONTENTS	2
SPECIFICATIONS	6
Overview	6
Basic Information	6
Dimensions	6
Speed, Capacities and Weight	7
Accommodations	7
Hull and Deck Information	7
Engine Information	7
DETAILED INFORMATION	8
Broker's Remarks	8
General Features	8
Aft Cockpit Deck	8
Master Stateroom	9
Master Head	9
VIP Stateroom	10
VIP Head	10
Starboard Guest Stateroom	10
Salon	11
Galley	11
Fly Bridge	11
Construction	12
Engineering	12
Electrical	13
Electronics & Navigation	13
Main Deck	13
Exclusions	14
Exclusions	14

Disclaimer	14
PHOTOS	15
Salon Seating	15
Salon Seating	15
Salon Seating	15
Salon	15
Galley	15
Galley	15
Sub Zero Fridge	16
Reefer Freezer and Cupboard	16
Breaker Panel	16
Dining table	16
Master Stateroom	16
Master Stateroom Seating	16
Master Stateroom TV	17
Master Stateroom Vanity	17
Master Stateroom Vanity	17
Master Stateroom Head	17
Master Stateroom Head	17
VIP Stateroom	17
VIP Stateroom	18
VIP Stateroom TV	18
VIP Stateroom Head	18
VIP Stateroom Head	18
Laundry	18
Guest Stateroom Starboard	18
Cockpit	19
Cockpit	19
Cockpit Controls	19

Cockpit	19
Lazarette	19
Helm	19
Helm Screens	20
Helm Screens	20
Screen covers	20
Helm	20
Helm Controls	20
Flybridge Seating	20
Flybridge Seating	21
Flybridge Deck	21
Flybridge Deck	21
Flybridge Wetbar	21
Sunroof	21
Engine Room	21
Engine Room	22
Engine Room	22
Generator	22
Sat TV Domes	22
Bow	22
Bow	22
Bow	23
Walkaround Side Deck	23
Port Profile	23
Walkaround Side Deck	23
Starboard Profile	23
Port Transom	23
Transom Profile	24
Transom Profile	24

Transom Galley	24
Starboard Bow	24
CONTACTS	25
Contact details	25
Telephones	25
Office hours	25
Address	25

# SPECIFICATIONS

---

## Overview

---

Maritimo's reputation for building stylish long range off shore cruisers and fish boats has gained much traction here in the U.S. the past few years. Known for seaworthiness in tough conditions and excellent performance throughout the line they have almost monopolized fully enclosed Bridge motor yachts that also feature walkaround decks, internal staircases, full beam Master Staterooms, aft Galleys and Bi-fold doors that open up the whole living space as one!

This 2013 M58 showcases all of the above with aplomb and in addition "Xenta" joysticks at Helm and Aft docking station for ease of Docking, Cockpit Controls, D.P.S. ( Digital Positioning System) for holding boat in one spot, upgraded Garmin 8000 Series Touchscreen dual displays with (2) VHF 200s and intercom to Galley from Helm, under water lights, (3) cameras, Life Raft and much, much more!

When it comes to comforts the M58 will not disappoint you. The full beam master Stateroom is complete with a luxurious king size bed, en-suite, chaise lounge and make-up vanity/ study. The enclosed bridge with an internal staircase will lead you to a second climate controlled salon with an extended aft balcony and sunroof.

This vessel also has extended warranties on engines with additional protection on many other items and equipment until Nov 2018

## Basic Information

---

**Category:** Cruiser

**Model Year:** 2013

**Year Built:** 2013

**Country:** United States

**Registration #:** 1243627

## Dimensions

---

**LOA:** 58' 0" (17.68m)

**Beam:** 17' 6" (5.33m)

**Max Draft:** 4' 5" (1.35m)

---

## Speed, Capacities and Weight

---

**Cruise Speed:** 26 Kts. (30 MPH)

**Cruise Speed RPM:** 2100 Kts.

**Cruise Speed Range:** 525

**Max Speed:** 31 Kts. (36 MPH)

**Max Speed RPM:** 2300 Kts.

**Water Capacity:** 211 Gallons

**Holding Tank:** 80 Gallons

**Fuel Capacity:** 1321 Gallons

---

## Accommodations

---

**Total Cabins:** 3

**Total Heads:** 2

---

## Hull and Deck Information

---

**Hull Material:** Fiberglass

---

## Engine Information

---

**Engines:** 2

**Manufacturer:** Volvo Penta

---

# DETAILED INFORMATION

---

## Broker's Remarks

---

Maritimo's reputation for building stylish long range off shore cruisers and fish boats has gained much traction here in the U.S. the past few years. Known for seaworthiness in tough conditions and excellent performance throughout the line they have almost monopolized fully enclosed Bridge motor yachts that also feature walkaround decks, internal staircases, full beam Master Staterooms, aft Galleys and Bi-fold doors that open up the whole living space as one!

This 2013 M58 showcases all of the above with aplomb and in addition "Xenta" joysticks at Helm and Aft docking station for ease of Docking, Cockpit Controls, D.P.S. ( Digital Positioning System) for holding boat in one spot, upgraded Garmin 8000 Series Touchscreen dual displays with (2) VHF 200s and intercom to Galley from Helm, under water lights, (3) cameras, Life Raft and much, much more!

When it comes to comforts the M58 will not disappoint you. The full beam master Stateroom is complete with a luxurious king size bed, en-suite, chaise lounge and make-up vanity/ study. The enclosed bridge with an internal staircase will lead you to a second climate controlled salon with an extended aft balcony and sunroof.

This vessel also has extended warranties on engines with additional protection on many other items and equipment until Nov 2018

## General Features

---

- (4) docking lines
- (4) large fenders
- (2) Xenta Joystick control
- Yacht controller 5 function remote
- (1) set flares, life jackets & coastal safety gear
- (1) boat hook
- (1) shore power lead
- Owners manuals
- (3) handheld fire extinguishers

## Aft Cockpit Deck

---

- Molded engine room access from cockpit through hatch
- stairs to engine room
- Fender & rope lockers port and starboard side
- hatch with gas strut for lazarette access



- aft entertainment module with sink, electric freezer built in- access from cockpit
- Transom doors port & starboard sides
- Stainless steel hand rails
- Foldaway swimming ladder under fixed platform
- (6) down lights & overhead blue/white cockpit lighting
- Cockpit shower hot and cold
- Fresh water wash down in cockpit
- Shore water filler
- 2x shore power inlet
- (1) Glendinning cable system with remote control
- Molded sink with storage under portside forward
- Teak Decking
- Xenta Joystick
- Engines controls and displays
- Flood lights
- Underwater lights (4)
- Kennon BBQ with griddle and cover
- Freedom Lift with remote control
- Custom carpet in lazarette

## Master Stateroom

---

- King size island berth with sprung mattress
- Large hanging and stowage area
- Upholstered bedhead
- (8) Down lights & (4) wall lights
- Bedside shelves
- Portside lockers & full height locker in polished timber
- Deck hatch
- 12,000BTU air conditioning
- Carpet throughout
- (6) opening port lights with blinds
- Desk & vanity
- 40" Flat screen TV
- Miele washer & dryer with storage above

## Master Head

---

- Toilet- fresh or salt water flush
- Corian vanity & Mirrors
- (2) down lights
- Soap bottle holder

- Toilet roll holder
- (2) towel rails
- (1) robe hook
- Seperate shower with automatic sump pump
- Deck hatch
- Opening Port light

## VIP Stateroom

---

- Island berth with sprung mattress and (2) drawer unit beneath with acess to bow thruster
- Upholstered bedhead
- Port & starboard shelves
- (2) full height lockers in varnished timber
- 10,000BTU air conditioning
- (6) down lights
- deck hatch
- Carpet throughout
- (2) opening port lights
- Flat screen TV

## VIP Head

---

- Toilet- fresh or salt water flush
- Corian vanity & mirrors
- (2) top lockers
- (2) down light
- Soap bottle dispenser
- Toilet roll holder
- (2) towel rails
- (1) robe hook
- Separate shower with automatic sump pump
- Deck hatch
- Opening Port light

## Starboard Guest Stateroom

---

- Double bunk beds
- Full height locker
- Air conditioning split from master stateroom
- (2) down lights
- Carpet throughout

- Opening port light

---

## Salon

---

- Dinette with leather upholstery and varnished occasional folding dining table starboard side
- L-Shaped lounge with leather upholstery
- Black Alloy framed sliding glass door to side deck
- Lumar tint on all windows and doors
- LED accent lighting
- Full wet bar in varnished timber with ice maker to entertainment unit with bottle and glass stowage & bar fridge
- AC & DC control board on entry to salon
- Black Alloy framed bi-fold glass door to cockpit
- Internal staircase to flybridge on single S/S tube
- Windows- toughened fixed glass forward and tinted toughend glass on sides
- Blinds to side windows and aft doors
- Carpet throughout
- (2) 12,000BTU air conditioning
- down lights in teak pelmet
- Rosewood & Honey Oak Amtico flooring
- Actuator for flat screen TV
- Vacumaide central vacuum system

---

## Galley

---

- (2) door refrigerator/ freezer (AC)
- (4) burner cook top
- Microwave
- Dishwasher drawer
- Slide out pantry
- Stainless steel sink with mixer tap and cupboard underneath
- Trash receptacle
- Drawers for plates, cutlery, pans, etc.
- Corian counter tops
- Rosewood & Honey Oak Amtico flooring

---

## Fly Bridge

---

- Forward helm flybridge 4 sided enclosed hartop
- Electric sunroof to hardtop

- Fixed window fwd center flybridge screen
- Glass rear bulkhead with sliding doors leading to skylounge deck
- Stainless steel rail to flybridge
- Helm Station- fully equipped steering, engine controls, engine instrumentation. 3x windscreen wipers & washers, bow and stern thruster control, trim tab controls, winch up/down controls, with rode counter compass
- Lumar tint on all windows and doors
- (2) drink holders on console
- Large leather upholstered dinette area
- Wet bar- sink with hot & cold water
- Access- internal staircase from salon
- Spotlight remote control
- Bar fridge stainless steel
- 2 Stidde custom captains helm chairs with foot rests
- Xenta Joystick upgrade
- (6) Custom drawers
- Upgraded to 32K BTU from 16K BTU
- Sliding windows to port and starboard
- (6) down lights

## Construction

---

- Variable dead rise deep V hull with molded spray rails
- Hull- solid fiberglass bottom with colored topsides
- Main bulkheads free standing fiberglass with core
- Deck & Wheelhouse- fiberglass with core
- Flybridge\_ fiberglass with core
- Water tight collision Bulkhead

## Engineering

---

- Acoustic Insulation
- Air conditioned all cabins reverse cycle
- Ball valves and skin fittings 316 stainless steel below water line
- Bilge pumps-Auto- 3 x 1100GPH & 1 x 2000GPH
- Controls- Single lever electronic single station
- Checker plate floor between engines
- Engine Instruments-electronic single station
- Engine bearers-moulded solid fiberglass
- Flexible Engine mounts Engine exhaust risers and Aqua lift mufflers
- Engine room air intake washable filters
- Engine room blower fans

- Engine room lighting AC off inverter
- Engine room fire system
- External & Internal strainers fitted to water intakes
- Fresh water tap & hose set in engine room
- Fresh water pump with smart sensor
- Fresh Water heater
- Fuel lines-approved rubber. All fittings swaged
- Steering- hydraulic power steering
- propellers computer machined Nibral 5 blade
- Pre-wired for water maker

---

## Electrical

- Generator- 1x 17 5kw generator fitted with sound shield, exhaust to transom and 24 volt charging alternator.
- Batteries- 4 x 210 amp engines
- Inverter supplies power points to bathrooms x 1 each galley x 1 engine room lights, galley fridge, TV's and stereos
- Battery Charging: Inverter charger 4kw
- Battery Switching: normal running: dedicated engine batteries isolate each engine
- Bonding System: 1 x large anode. Tinned bonding wire to metalwork and heavy bonding between main engines and generator
- Earthing-ECLB switch fitted to GPO circuits
- Electrical Panels- dedicated 24 volt panels for accommodation deck, and flybridge
- Electrical Wiring- tinned wiring where applicable coded and labelled
- Navigation lights- international code compliant CE
- Solenoid pack for auto pilot

---

## Electronics & Navigation

- TV feed to Garmin display
- Twin Garmin 8000 series 17" screens
- Twin Garmin VHF 200 & 200I
- Auto Pilot
- 6KW digital Open Array radar
- 3 Cameras: (2) engine room, (1) back down
- KVH 7 SAT TV System

---

## Main Deck

- Reversible 24 volt heavy duty horizontal windlass with foredeck and flybridge controls

- Self stowing 40kg stainless steel anchor with CE compliant chain 10mm Grade L x 60 meters
- Heavy duty bow rollers self loading
- Bow stowage locker with salt water deck/anchor wash with divider
- Stainless steel cleats bow, spring & stern-total 10
- White PVE high-impact rubbing banding with stainless steel insert
- Electric horn
- Sullage pump out situated in side deck
- Fuel filler on side deck
- shore water fitting
- Rails- stainless steel railings & bow rail with custom made cast stainless cleats.
- Hatches- 4 escape hatches including roller blinds in sleeping accommodation
- Molded fore-deck seat

---

## Exclusions

Owner's personal property

---

## Exclusions

Owner's personal belongings.

---

## Disclaimer

The Company offers the details of this vessel or yacht in good faith but cannot guarantee or warrant the accuracy of this information nor warrant the condition of the vessel. A buyer should instruct his representatives, agents, or his surveyors, to investigate such details as the buyer desires validated. This vessel or yacht is offered subject to prior sale, price change, or withdrawal without notice.

# PHOTOS

### Salon Seating



### Salon Seating



### Salon Seating



### Salon



### Galley



### Galley





**Sub Zero Fridge**



**Reefer Freezer and Cupboard**



**Breaker Panel**



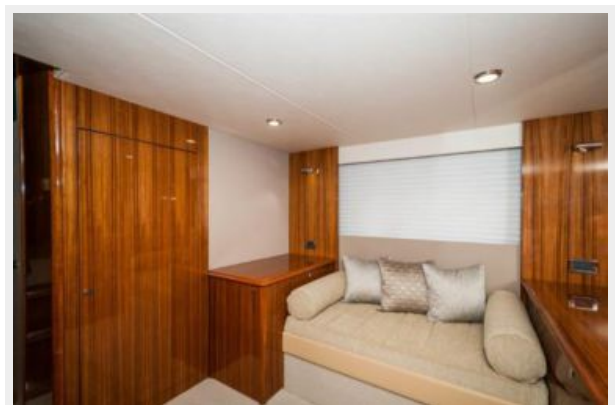
**Dining table**



**Master Stateroom**



**Master Stateroom Seating**





**Master Stateroom TV**



**Master Stateroom Vanity**



**Master Stateroom Vanity**



**Master Stateroom Head**



**Master Stateroom Head**



**VIP Stateroom**



**VIP Stateroom**



**VIP Stateroom TV**



**VIP Stateroom Head**



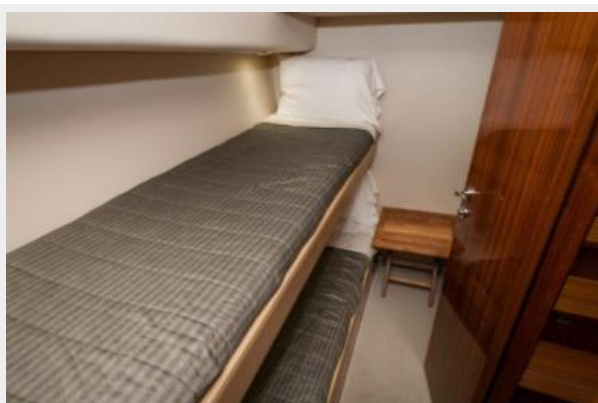
**VIP Stateroom Head**



**Laundry**



**Guest Stateroom Starboard**





**Cockpit**



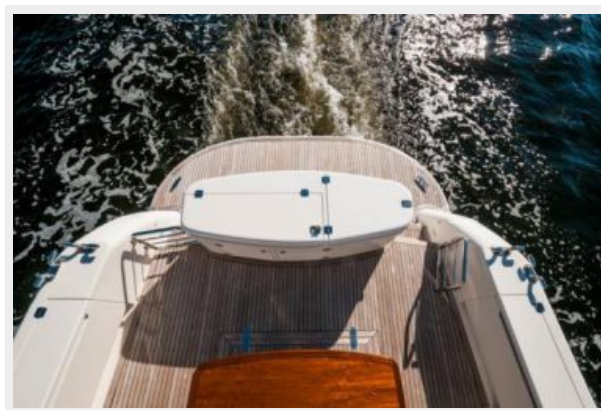
**Cockpit**



**Cockpit Controls**



**Cockpit**



**Lazarette**



**Helm**



**Helm Screens**



**Helm Screens**



**Screen covers**



**Helm**



**Helm Controls**



**Flybridge Seating**





**Flybridge Seating**



**Flybridge Deck**



**Flybridge Deck**



**Flybridge Wetbar**



**Sunroof**



**Engine Room**



**Engine Room**



**Engine Room**



**Generator**



**Sat TV Domes**



**Bow**



**Bow**





**Bow**



**Walkaround Side Deck**



**Walkaround Side Deck**



**Port Profile**



**Starboard Profile**



**Port Transom**



**Transom Profile**



**Transom Profile**



**Transom Galley**



**Starboard Bow**





# CONTACTS

---

Andrey Shestakov, leading yacht broker of the sales department of Shestakov Yacht Sales Inc. Shestakov Yacht Sales Inc., the official representative of the Miami/Fort Lauderdale FL headquarters.

## Contact details

---

Email:  
**andrey@shestakovyachtsales.com**

Web: [shestakovyachtsales.com/en/](http://shestakovyachtsales.com/en/)

## Telephones

---

USA: **+1(954)274-4435**

## Office hours

---

Monday – Saturday: **9:00 - 21:00** EDT

Sunday: **closed**

## Address

---



Harbour Towne Marina, 850 NE 3rd St,  
STE 213, Dania, FL 33004