

DEFIANCE — OVERMARINE - MANGUSTA



Builder: OVERMARINE - MANGUSTA

Year Built: 2006

Model: Cruiser

Price: PRICE ON APPLICATION

Location: United States

LOA: 72' 0" (21.95m)

Beam: 18' 4" (5.59m)

Max Draft: 3' 9" (1.14m)

Our experienced yacht broker, Andrey Shestakov, will help you choose and buy a yacht that best suits your needs **Defiance — OVERMARINE - MANGUSTA** from our catalogue. Presently, at Shestakov Yacht Sales Inc., we have a wide variety of yachts available on our sale's list. We also work in close contact with all the big yacht manufacturers from all over the world.

If you would like to buy a yacht **Defiance — OVERMARINE - MANGUSTA** or would like help answering any questions concerning purchasing, selling or chartering a yacht, please call **+1(954)274-4435**

TABLE OF CONTENTS

TABLE OF CONTENTS	2
SPECIFICATIONS	3
Overview	3
Basic Information	3
Dimensions	3
Speed, Capacities and Weight	3
Accommodations	3
Hull and Deck Information	3
Engine Information	4
DETAILED INFORMATION	5
Major Features	5
Exclusions	6
Disclaimer	6
PHOTOS	7
CONTACTS	12
Contact details	12
Telephones	12
Office hours	12
Address	12

SPECIFICATIONS

Overview

72 Mangusta Sport Yacht 2006 just listed and easy to see in Miami Beach, FL. Twin MTU 10V2000 M93 turning Arneson drives.

Basic Information

Category: Cruiser

Sub Category: Express

Model Year: 2006

Year Built: 2006

Country: United States

Vessel Top: Electronic Sunroof

Dimensions

LOA: 72' 0" (21.95m)

Beam: 18' 4" (5.59m)

Max Draft: 3' 9" (1.14m)

Speed, Capacities and Weight

Water Capacity: 237 Gallons

Fuel Capacity: 1109 Gallons

Accommodations

Total Cabins: 3

Hull and Deck Information

Hull Material: Fiberglass

Engine Information

Manufacturer: MTU

Model: 10V2000 M93

Fuel Type: Diesel

DETAILED INFORMATION

Major Features

Overview

Accommodations

- Master stateroom has a queen size centerline berth. Ensuite head split-style including bidet - (1) Double cabin with ensuite head - (1) Twin cabin with Pullman berth - (1) Crew cabin forward sleeps 2

Main Deck

- Sony 2015 TV 37"/Direct TV - Yamaha 2015 Wi-Fi - JM Lab sub base loudspeaker - RTI remote control - (4) Earthquake loudspeakers (after deck) - Denon Hi-Fi amplifier - Aston satellite decoder - (6) Earthquake loudspeakers - Panasonic phone

Fordeck

- Sony Car radio - (2) loudspeakers - Face plate Poly-Planar

Salon

- Philips TV/Direct TV - Aston satellite decoder/DVD/Denon amplifier - Denon sub base loudspeaker - (4) Earthquake loudspeakers - RTI remote control - Panasonic phone - Samsung fax machine

Master Cabin

- Queen berth - Ensuite split head including bidet - Sony 19" TV/Direct TV - HI-Fi/DVD/CD/Denon amplifier - (4) Earthquake loudspeakers - Panasonic phone - Aston satellite decoder - Denon sub base loudspeaker - RTI remote control

VIP Cabin

- Full size berth - Ensuite head - Sony 19" TV/Direct TV - HI-Fi/DVD/CD/Denon amplifier - (4) Earthquake loudspeakers - Panasonic phone - Aston satellite decoder - Denon sub base

loudspeaker - RTI remote control

Twin Cabin

- Sony 15" TV/Direct TV - Ensuite head - Denon amplifier/Hi-Fi/ DVD/CD - (4) Earthquake loudspeakers - Aston satellite decoder - Denon sub base loudspeaker - Panasonic phone

Crew Quarters

- Sleeps 2 - Head - Panasonic phone - Furuno data repeater - Sony car radio - (2) Earthquake loudspeakers

Engine and Mechanical Equipment

- Twin MTU 10V2000M93 CR 1500hp each - Arneson propulsion - Steering Arneson ASD14 - Gearboxes reduction 1.5:1 - (2) Kohler 16kW - Vetus bow thruster - Idromar 130 L/hr watermaker - Air conditioning

Communications and Navigation Equipment

- VHF DSC Furuno - VHF DSC loudspeaker Poly-Planar - (1) handheld VHF - GSM Voice Cell-line - SATCOM Fax/telephone KVH - PABX telephone exchange system 4 channel cell station unit Panasonic - Satellite TV antenna and dome KVH - Advanced digital control unit ADCU KVH - (2) metal antennas - Knuckle Banten Navigation Equipment - Furuno Radar 4" scanner - Furuno chart plotter - Furuno autopilot - Furuno compass - Furuno depth and speed transducer - Furuno GPS - Furuno Navtex Data repeater

Safety and Security Equipment - (2) Elbex CCTV cameras - radar arch and engine room

Exclusions

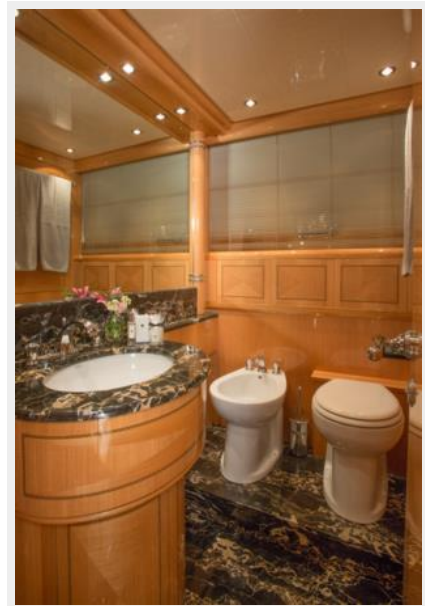
Owner's personal belongings.

Disclaimer

The Company offers the details of this vessel or yacht in good faith but cannot guarantee or warrant the accuracy of this information nor warrant the condition of the vessel. A buyer should instruct his representatives, agents, or his surveyors, to investigate such details as the buyer desires validated. This vessel or yacht is offered subject to prior sale, price change, or withdrawal without notice.

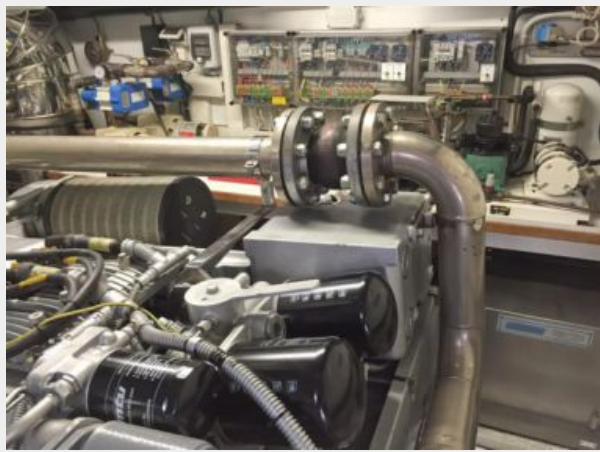
PHOTOS











CONTACTS

Andrey Shestakov, leading yacht broker of the sales department of Shestakov Yacht Sales Inc. Shestakov Yacht Sales Inc., the official representative of the Miami/Fort Lauderdale FL headquarters.

Contact details

Email: andrey@shestakovyachtsales.com

Web: shestakovyachtsales.com/en/

Telephones

USA: +1(954)274-4435

Office hours

Monday – Saturday: **9:00 - 21:00** EDT

Sunday: **closed**

Address



Harbour Towne Marina, 850 NE 3rd St,
STE 213, Dania, FL 33004