

## RAGAMUFFIN — TA CHIAO



**Builder:** TA CHIAO

**Year Built:** 1979

**Model:** Cruising Sailboat

**Price:** PRICE ON APPLICATION

**Location:** United States Virgin Islands

**LOA:** 54' 0" (16.46m)

**Beam:** 15' 3" (4.65m)

**Max Draft:** 8' 0" (2.44m)

**Cruise Speed:** 7 Kts. (8 MPH)

**Max Speed:** 10 Kts. (12 MPH)

Our experienced yacht broker, Andrey Shestakov, will help you choose and buy a yacht that best suits your needs **RAGAMUFFIN — TA CHIAO** from our catalogue. Presently, at Shestakov Yacht Sales Inc., we have a wide variety of yachts available on our sale's list. We also work in close contact with all the big yacht manufacturers from all over the world.

If you would like to buy a yacht **RAGAMUFFIN — TA CHIAO** or would like help answering any questions concerning purchasing, selling or chartering a yacht, please call **+1(954)274-4435**

# TABLE OF CONTENTS

TABLE OF CONTENTS	2
SPECIFICATIONS	3
Overview	3
Basic Information	3
Dimensions	3
Speed, Capacities and Weight	4
Accommodations	4
Hull and Deck Information	4
Engine Information	4
DETAILED INFORMATION	5
Accommodations	5
Galley	5
Deck Equipment	6
Navigation Equipment & Electronics	6
Cockpit	7
Electrical Equipment	7
Engine Room and Mechanical Equipment	7
Safety	7
Remarks	7
Exclusions	8
Disclaimer	8
PHOTOS	9
CONTACTS	13
Contact details	13
Telephones	13
Office hours	13
Address	13

# SPECIFICATIONS

## Overview

Ragamuffin is a crewed charter yacht in the Virgin Islands and has been since 2004. Previously she was on Lake Champlain for over 10 years, as the yacht "Dash". From 1980 to about 1990 she was a crewed charter yacht in the Virgin Islands under the name of "Bagheera".

Ragamuffin has been extensively remodeled and upgraded in the last eight years. Complete aft cabin remodel; aft head; complete galley remodel, to increase storage and add new appliances; all exterior plywood walls removed and replaced with teak. The forward head has been remodeled creating 2 heads each head with an en suite shower. New generator; cockpit enclosure; sun awning; chain plates; standing and running rigging replaced; new halyards; oversize winches; complete electrical upgrade with added circuits and more. The teak decks are in the process of being removed and tread master to be installed.

Ragamuffin appears at first to be a CT54 but is considerably bigger than a 1975 model and is noticeably different and slightly larger than a 1983. She had a lead extension of 18 inches added to her keel, making her much better going to weather. The owner operators have raced her with good results in many classic yacht races.

## Basic Information

**Category:** Cruising Sailboat

**Model Year:** 1979

**Year Built:** 1979

**Country:** United States Virgin Islands

## Dimensions

**LOA:** 54' 0" (16.46m)

**LWL:** 45' 0" (13.72m)

**LOD:** 52' 0" (15.85m)

**Beam:** 15' 3" (4.65m)

**Max Draft:** 8' 0" (2.44m)

**MFG Length:** 54' 0" (16.46m)

---

## Speed, Capacities and Weight

---

**Cruise Speed:** 7 Kts. (8 MPH)

**Max Speed:** 10 Kts. (12 MPH)

**Water Capacity:** 320 Gallons

**Holding Tank:** 50 Gallons

**Fuel Capacity:** 320 Gallons

---

## Accommodations

---

**Total Cabins:** 4

**Total Berths:** 3

**Total Heads:** 2

---

## Hull and Deck Information

---

**Hull Material:** Fiberglass

---

## Engine Information

---

**Engines:** 1

**Manufacturer:** Ford Lehman

**Engine Type:** Inboard

**Fuel Type:** Diesel

---

# DETAILED INFORMATION

---

---

## Accommodations

---

“**Ragamuffin**” has a 4 staterooms and 3 heads each with en suite shower.

Starting forward there is a “V” berth with two single berths. There is shelving port and starboard for books and sliding storage lockers as well. The cabin is nicely appointed with teak joinery.

Moving aft is the guest shower, which is centrally located with separate access for each of the guest staterooms. There is a linen closet to port, shower center, and the head to starboard. The head has a marine toilet, sink, mirror, vanity and storage.

Two guest staterooms lie to port and starboard. The port guest stateroom features a comfortable double bed with storage beneath and 12 drawers with storage. There is a large opening hatch and 2 opening ports for light and ventilation.

The starboard guest stateroom features over and under berths with the lower berth larger of the two. There are 11 drawers with storage. There is a large opening hatch and 2 opening ports for light and ventilation here as well. Both guest staterooms have doors for added privacy.

The large main salon area is next with light and views provided by the pilothouse design. There is a pullout futon (sofa/bed) to port and chairs to starboard. The joinery work is all in fine teak. CT's all have a tremendous amount of storage room in various drawers and opening lockers. There are bookshelves galore, as well. Beneath the flooring in the main salon is the engine room. There is a 120hp Ford Lehman diesel engine and a Next Generation 5.5k diesel generator in a sound shield. The main electrical panel is built into the forward bulkhead.

In the aft section of the main salon is the nav station featuring an opening chart table.

A large sweeping companionway of solid teak completes the salon.

The galley lies behind the companion to port and is well designed and equipped. Opposite to starboard is the dining table with 2 opening ports for ventilation.

Finally all the way aft is the owners stateroom, not as originally built but custom remodeled, with a huge athwartship Queen berth, 6 opening ports and large hatch, numerous lockers and drawers. There is a large hanging locker for clothes as well. To port and forward is the owner's head, which features a marine toilet, mirror, vanity and shower.

---

## Galley

---

The galley is accessed from behind the companionway with a large counter facing the main salon.

- Large double sinks with mixing faucet
- 4 burner Kuppersbusch propane cook top with Waring electric half-sheet commercial oven below (2011)
- Large GE microwave / convection oven (2005)
- Panasonic Infrared toaster oven (2008)
- 8 cu. ft. refrigerator with 12V BD50 compressor / flat plate
- 4.5 cu. ft. freezer with 12V BD50 compressor / flat plate and 120V AC compressor with holdover plate
- Hot and cold pressurized water
- Numerous drawers and lockers for storage, not as original, custom remodeled for additional storage (2010)
- Good counter space for meal preparation
- 2 Opening ports for ventilation

---

## Deck Equipment

- Isomat aluminum masts and booms ,double headsail ketch rig
- Teak deck forward, aft deck has had teak removed
- 1.25' SS pulpit and pushpit with double lifelines and SS stanchions
- 50lb Delta anchor with 200ft 3/8 chain,
- 70lb Barnacle anchor with 20ft 1/2 chain and 200ft line.
- 77lb Fluke anchor with 50ft 1/2 chain and 200ft line
- 500 feet of hurricane line
- Lofran Tigress 1200 watt electric windlass (2004)
- 3 large teak deck boxes
- 6 opening hatches/ 5 with screens
- 5 dorade vents
- Dodger/Bimini (2010) – Cockpit fully enclosed with screens
- Aft deck Sun awning (2010)
- Genoa on Profurl roller furler
- Staysail on Furlex roller furler
- Main and mizzen have Custom Stackpacks
- All sails are in very good condition made by Hood Marblehead loft
- Chainplates have been replaced along with most of the rigging with Stalocs (2007)
- 10 winches of which 8 are self tailors
- Dinghy davits
- BBQ

---

## Navigation Equipment & Electronics

- Raytheon chartplotter
- Raymarine depth, wind and speed

- Raymarine autopilot
- VHF radio

---

## Cockpit

---

- Pedestal with wheel, engine controls and instrument pod
- Cockpit cushions
- Winches 6 all self tailors
- Teak boxes for storage
- Raymarine depth, wind and speed (2004)
- Raymarine autopilot (2004)
- Raytheon chartplotter
- VHF RAM mic

---

## Electrical Equipment

---

- Four 4D AGM batteries, 800 amps (2009)
- Magnum 2000 Inverter/charger (2008)
- 2 Blue Sea electrical panels, complete electrical upgrade with added circuits (2005)
- Hot water heater

---

## Engine Room and Mechanical Equipment

---

- Ford Lehman diesel engine 120 hp with rebuilt transmission (2005)
- Heat Exchanger and hoses replaced 2006
- 5.5 Next Generation Diesel generator with 300 hours (2011)
- 2 Racor 500 fuel filters

---

## Safety

---

- 6 person Life Raft
- Horseshoe ring / MOB pole

---

## Remarks

---

Ragamuffin is a crewed charter yacht in the Virgin Islands and has been since 2004. Previously she was on Lake Champlain for over 10 years, as the yacht "Dash". From 1980 to about 1990 she was a crewed charter yacht in the Virgin Islands under the name of "Bagheera".

Ragamuffin has been extensively remodeled and upgraded in the last six years. Complete aft

cabin remodel; aft head; complete galley remodel, to increase storage and add new appliances; all exterior plywood walls removed and replaced with teak. The forward head has been remodeled creating 2 heads each head with an en suite shower. New generator; cockpit enclosure; sun awning; chain plates; standing and running rigging replaced; new halyards; oversize winches; complete electrical upgrade with added circuits and more. The teak decks are in the process of being removed and tread master to be installed.

Ragamuffin appears at first to be a CT54 but is considerably bigger than a 1975 model and is noticeably different and slightly larger than a 1983. She had a lead extension of 18 inches added to her keel, making her much better going to weather. The owner operators have raced her with good results in many classic yacht races.

## Exclusions

---

Owner's personal belongings.

## Disclaimer

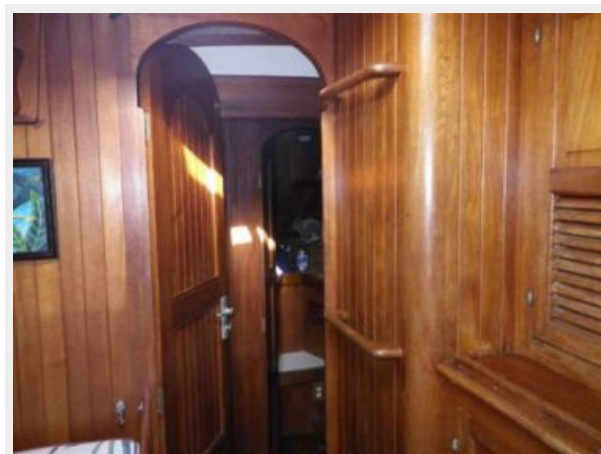
---

The Company offers the details of this vessel or yacht in good faith but cannot guarantee or warrant the accuracy of this information nor warrant the condition of the vessel. A buyer should instruct his representatives, agents, or his surveyors, to investigate such details as the buyer desires validated. This vessel or yacht is offered subject to prior sale, price change, or withdrawal without notice.



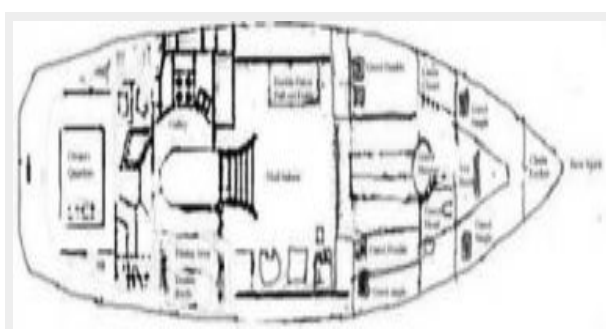
# PHOTOS











# CONTACTS

---

Andrey Shestakov, leading yacht broker of the sales department of Shestakov Yacht Sales Inc. Shestakov Yacht Sales Inc., the official representative of the Miami/Fort Lauderdale FL headquarters.

## Contact details

---

Email: **andrey@shestakovyachtsales.com**

Web: [shestakovyachtsales.com/en/](http://shestakovyachtsales.com/en/)

## Telephones

---

USA: **+1(954)274-4435**

## Office hours

---

Monday – Saturday: **9:00 - 21:00 EDT**

Sunday: **closed**

## Address

---



Harbour Towne Marina, 850 NE 3rd St,  
STE 213, Dania, FL 33004