

## PLAYPEN — VIKING



**Builder:** [VIKING](#)

**Year Built:** 2014

**Model:** Sport Fisherman

**Price:** PRICE ON APPLICATION

**Location:** United States

**LOA:** 62' 0" (18.90m)

**Beam:** 18' 11" (5.77m)

**Max Draft:** 5' 2" (1.57m)

Our experienced yacht broker, Andrey Shestakov, will help you choose and buy a yacht that best suits your needs **Playpen — VIKING** from our catalogue. Presently, at Shestakov Yacht Sales Inc., we have a wide variety of yachts available on our sale's list. We also work in close contact with all the big yacht manufacturers from all over the world.

If you would like to buy a yacht **Playpen — VIKING** or would like help answering any questions concerning purchasing, selling or chartering a yacht, please call **+1(954)274-4435**

# TABLE OF CONTENTS

TABLE OF CONTENTS	2
SPECIFICATIONS	6
Basic Information	6
Dimensions	6
Speed, Capacities and Weight	6
Accommodations	6
Hull and Deck Information	6
Engine Information	7
DETAILED INFORMATION	8
Vessel Walkthrough	8
Electronics & Navigational Equipment	8
Deck Equipment	8
Fishing Equipment	9
Electrical System	9
Engine Room	9
Quick Reference Viking Option List	9
Remarks	9
Exclusions	9
Disclaimer	9
PHOTOS	11
Salon	11
Salon	11
Salon	11
Salon	11
Dinette	11
Dinette	11
Stairs to Enclosed Bridge	12
Galley	12

Galley	12
Galley	12
Laundry Center	13
Galley	13
Master Stateroom	13
Master Stateroom	13
Master Stateroom	14
Master Stateroom	14
Master Head	14
Master Stateroom	14
Forward Stateroom	15
Forward Stateroom	15
Forward Guest Head	15
Forward Stateroom	15
Forward Guest Head	16
Forward Starboard Guest Stateroom	16
Forward Starboard Guest Stateroom	16
Guest Head	16
Guest Head	17
Starboard Guest Stateroom	17
Starboard Guest Stateroom	17
Starboard Guest Stateroom	17
Starboard Guest Stateroom	18
Enclosed Bridge	18
Enclosed Bridge	18
Enclosed Bridge	18
Enclosed Bridge	18
Enclosed Bridge	18
Enclosed Bridge	19

---

Enclosed Bridge	19
Enclosed Bridge	19
Enclosed Bridge	19
Enclosed Bridge	20
Cockpit	20
Cockpit	20
Cockpit	20
Cockpit	21
Cockpit	21
Aft Deck	21
Cockpit	21
Aft Deck	22
Aft Deck	22
Engine Room	22
Engine Room	22
Engine Room	22
Engine Room	22
Engine Room	23
Engine Room	23
Engine Room	23
Engine Room	23
Engine Room	23
Engine Room	23
Engine Room	23
Engine Room	24
Our Trade	24
Our Trade	24
Our Trade	24
Our Trade	24
Our Trade	24

---

---

Our Trade	25
CONTACTS	26
Contact details	26
Telephones	26
Office hours	26
Address	26

---

# SPECIFICATIONS

---

## Basic Information

---

**Category:** Sport Fisherman

**Model Year:** 2015

**Year Built:** 2014

**Country:** United States

## Dimensions

---

**LOA:** 62' 0" (18.90m)

**Beam:** 18' 11" (5.77m)

**Max Draft:** 5' 2" (1.57m)

## Speed, Capacities and Weight

---

**Displacement:** 94025 Pounds

**Water Capacity:** 310 Gallons

**Holding Tank:** 152 Gallons

**Fuel Capacity:** 2150 Gallons

## Accommodations

---

**Total Cabins:** 4

**Total Heads:** 3

## Hull and Deck Information

---

**Hull Material:** Fiberglass

**Hull Configuration:** Modified V-Hull

**Hull Designer:** Viking Team

---

## Engine Information

---

**Engines:** 2

**Manufacturer:** Caterpillar

**Model:** C32A

**Engine Type:** Inboard

**Fuel Type:** Diesel

---

# DETAILED INFORMATION

---

## Vessel Walkthrough

---

This beautiful 62 Viking Enclosed Bridge features the highly desirable 4 stateroom, 3 head layout with a stunning salon, galley and dinette on the main deck.

The forward stateroom is highlighted by a centerline queen berth and is adjoined by ensuite facilities. The luxurious master suite is to port and offers an abundance of hanging and drawer storage, night stand, and a private head with stall shower adjoin. The starboard guest stateroom sleeps two on upper and lower berths and shares a head and stall shower with the aft starboard cabin which sleeps two on lower berths. Access to this shared head is also from the companionway for day use. The handy washer/dryer are accessed from the companionway as well.

On the main deck, the galley is forward to port and features 6 drawers of SUB ZERO refrigeration, a four-burner cooktop, sink, microwave/convection oven, and an abundance of drawers and slide out storage areas. To starboard is the functional and comfortable dinette with a custom teak table. The TV is forward above the dinette. Aft to port is the L-shaped lounge and the entertainment center with concealed ice maker and upper electrical panel is opposite.

Access to the flybridge is via a handsome staircase and access to the cockpit is through a sliding electric door, both to starboard. The enclosed flybridge provides an additional entertaining and relaxing area with TV, SUB ZERO refrigeration, as well as the command center. A Stidd chair and forward facing bench to port provide additional seating. Aft through a swinging door to the aft control area with bench seating and full controls. A ladder provides access from this area directly to the cockpit.

---

## Electronics & Navigational Equipment

---

Furuno Navnet 25kw 96 mile radar, Furuno T2T BB plotter, KEP Navigation PC with NOBELTEC Trident software (radar & sounder options), Furuno AIS, Furuno DFF1-UHD CHIRP Sounder, Furuno RD33 Data organizer, GARMINE GHP-12 Autopilot, (2) ICOM M604 VHF radios, KVH V-3 IP Tracphone, Wifi router, (3) engine room cameras, (1) cockpit camera, FLIR M625L Thermal imaging unit, KVH HD--7 Sat TV, GOST Security tracking system, Furuno Navnet T29 at aft flybridge station, (3) KTP 19" screens, ACR spotlight, Fusion stereo in cockpit

---

## Deck Equipment

---

Radar mast, bow pulpit, windlass with gypsy and drum, teak cockpit sole, teak mezzanine, decking, black mask, bow rail, bow thruster, fresh and salt water washdowns, cockpit cover



---

## Fishing Equipment

---

Rupp outriggers, center rigger, MIYA EPOCH teaser reels, transom door with gate, transom fish box with window plumbed as live well, cockpit freezer, rod holders, trolling valves, (6) rod holders on aft flybridge rail, 12v outlets under coaming, fish box, live well in sole, (4) rod holders in haunches

---

## Electrical System

---

24v DC/110v AC/240v AC systems, (2) 50amp shore cords on cablemasters, (2) 21.5 kw Onan generators

---

## Engine Room

---

Dual power steering pumps, oil change system to cockpit dockside box, dual Racor fuel filters, fuel priming pumps

---

## Quick Reference Viking Option List

---

SEAKEEPER GYRO, Eskimo ice maker, Sea Recovery 1400GPD water maker, black mask, teak cockpit & mezzanine decking, refrigerated mezzanine step, refrigerated cockpit step box, underwater lights, extra fuel capacity, (2) Cablemasters, bow thruster, (2) generators

---

## Remarks

---

This like new 62 Viking features a long list of factory and aftermarket options, extremely low original hours, and comes with the balance of the Caterpillar 5 year extended service coverage. She is ready to travel today and is priced to sell!

---

## Exclusions

---

Owner's personal belongings.

---

## Disclaimer

---

The Company offers the details of this vessel or yacht in good faith but cannot guarantee or warrant the accuracy of this information nor warrant the condition of the vessel. A buyer should instruct his representatives, agents, or his surveyors, to investigate such details as the buyer desires validated. This vessel or yacht is offered subject to prior sale, price change, or withdrawal

without notice.

# PHOTOS

Salon



Salon



Salon



Salon



Dinette



Dinette



**Stairs to Enclosed Bridge**



**Galley**



**Galley**



**Galley**



**Galley**



**Laundry Center**



**Master Stateroom**



**Master Stateroom**



**Master Stateroom**



**Master Stateroom**



**Master Stateroom**



**Master Head**



**Forward Stateroom**



**Forward Stateroom**



**Forward Stateroom**



**Forward Guest Head**



**Forward Guest Head**



**Forward Starboard Guest Stateroom**



**Forward Starboard Guest Stateroom**



**Guest Head**





**Guest Head**



**Starboard Guest Stateroom**



**Starboard Guest Stateroom**



**Starboard Guest Stateroom**



**Starboard Guest Stateroom**



**Enclosed Bridge**



**Enclosed Bridge**



**Enclosed Bridge**



**Enclosed Bridge**



**Enclosed Bridge**



**Enclosed Bridge**



**Enclosed Bridge**



**Enclosed Bridge**



**Enclosed Bridge**



**Enclosed Bridge**



**Cockpit**



**Cockpit**



**Cockpit**



**Cockpit**



**Cockpit**



**Aft Deck**

**Cockpit**



**Aft Deck**



**Aft Deck**



**Engine Room**



**Engine Room**



**Engine Room**



**Engine Room**



**Engine Room**



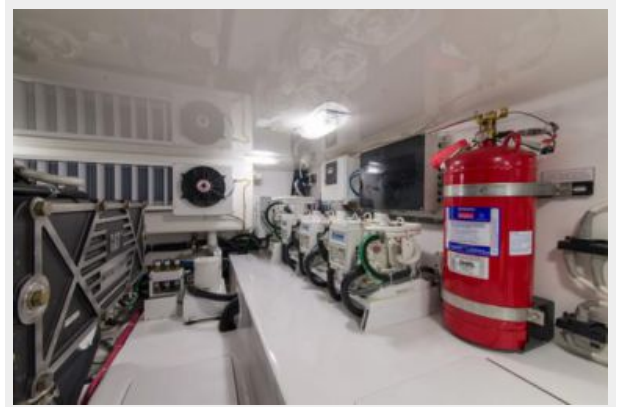
**Engine Room**



**Engine Room**



**Engine Room**



**Engine Room**



**Engine Room**



**Engine Room**



**Our Trade**



**Our Trade**



**Our Trade**



**Our Trade**



**Our Trade**





## Our Trade



# CONTACTS

---

Andrey Shestakov, leading yacht broker of the sales department of Shestakov Yacht Sales Inc. Shestakov Yacht Sales Inc., the official representative of the Miami/Fort Lauderdale FL headquarters.

## Contact details

---

Email: [andrey@shestakovyachtsales.com](mailto:andrey@shestakovyachtsales.com)

Web: [shestakovyachtsales.com/en/](http://shestakovyachtsales.com/en/)

## Telephones

---

USA: +1(954)274-4435

## Office hours

---

Monday – Saturday: **9:00 - 21:00** EDT

Sunday: **closed**

## Address

---



Harbour Towne Marina, 850 NE 3rd St,  
STE 213, Dania, FL 33004