

FERRETTI YACHTS 800 — FERRETTI



Builder: FERRETTI

Year Built: 2016

Model: Motor Yacht

Price: PRICE ON APPLICATION

Location: United States

LOA: 80' 0" (24.38m)

Beam: 20' 7" (6.27m)

Max Draft: 6' 2" (1.88m)

Cruise Speed: 28 Kts. (32 MPH)

Max Speed: 32 Kts. (37 MPH)

Our experienced yacht broker, Andrey Shestakov, will help you choose and buy a yacht that best suits your needs **Ferretti Yachts 800 — FERRETTI** from our catalogue. Presently, at Shestakov Yacht Sales Inc., we have a wide variety of yachts available on our sale's list. We also work in close contact with all the big yacht manufacturers from all over the world.

If you would like to buy a yacht **Ferretti Yachts 800 — FERRETTI** or would like help answering any questions concerning purchasing, selling or chartering a yacht, please call **+1(954)274-4435**

TABLE OF CONTENTS

TABLE OF CONTENTS	2
SPECIFICATIONS	3
Overview	3
Basic Information	3
Dimensions	3
Speed, Capacities and Weight	3
Accommodations	4
Hull and Deck Information	4
Engine Information	4
PHOTOS	5
CONTACTS	14
Contact details	14
Telephones	14
Office hours	14
Address	14

SPECIFICATIONS

Overview

Innovation matched with a classic-contemporary design, the perfect recipe of Ferretti Yachts 800, penciled by architect Gianni Zuccon from Studio Zuccon International Project in collaboration with the research center of the Group. The result is a yacht featuring wide interior spaces, with a layout generally adopted in larger vessels, blended with catchy external lines, enhanced by the use of color, in which wide windows characterize the external design, plunging interiors into an amazing quantity of light. The external profile of Ferretti Yachts 800 features to distinguishing characteristics: the use of the bronze color for the dome and the graphic lines of windows, which alternate curvy and smooth lines with sharp 'cuts'.

Basic Information

Category: Motor Yacht

Sub Category: Flybridge

Model Year: 2016

Year Built: 2016

Country: United States

Vessel Top: Hardtop

Fly Bridge: Yes

Dimensions

LOA: 80' 0" (24.38m)

LWL: 67' 8" (20.62m)

Beam: 20' 7" (6.27m)

Max Draft: 6' 2" (1.88m)

Speed, Capacities and Weight

Cruise Speed: 28 Kts. (32 MPH)

Cruise Speed RPM: 310 Kts.

Max Speed: 32 Kts. (37 MPH)

Displacement: 167392 Pounds

Water Capacity: 349 Gallons

Fuel Capacity: 1783 Gallons

Accommodations

Total Cabins: 4

Total Heads: 4

Crew Cabin: 2

Crew Heads: 2

Hull and Deck Information

Hull Material: Composite Fiberglass

Hull Color: White

Engine Information

Engines: 2

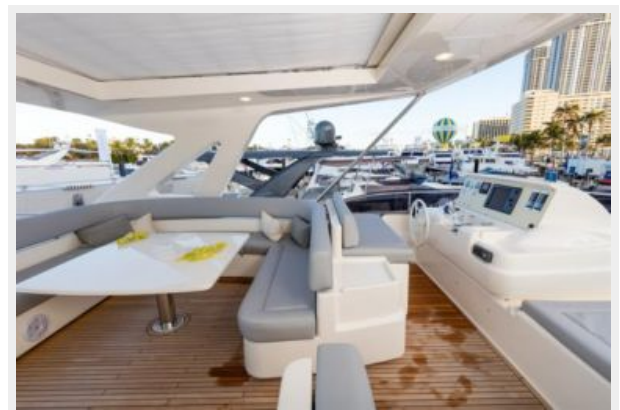
Manufacturer: MTU

Model: MTU 1948 HP

Engine Type: Inboard

Fuel Type: Diesel

PHOTOS



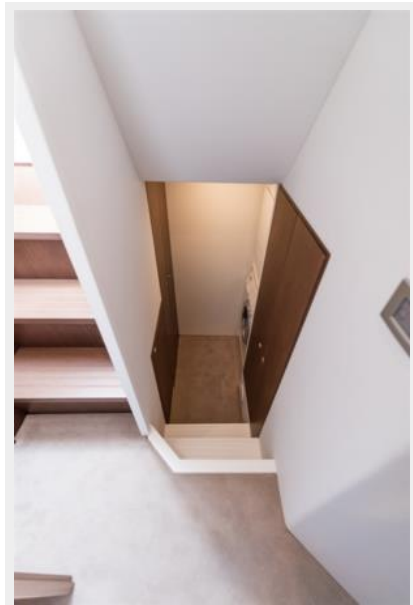
















CONTACTS

Andrey Shestakov, leading yacht broker of the sales department of Shestakov Yacht Sales Inc. Shestakov Yacht Sales Inc., the official representative of the Miami/Fort Lauderdale FL headquarters.

Contact details

Email: andrey@shestakovyachtsales.com

Web: shestakovyachtsales.com/en/

Telephones

USA: +1(954)274-4435

Office hours

Monday – Saturday: **9:00 - 21:00** EDT

Sunday: **closed**

Address



Harbour Towne Marina, 850 NE 3rd St,
STE 213, Dania, FL 33004