

KRISTINA — VIKING



Судостроитель: VIKING

Год постройки: 2001

Модель: Моторная яхта

Цена: ЦЕНА ЯХТЫ ПО ЗАПРОСУ

Местонахождение: United States

Длина общая: 108' 0" (32.92m)

Ширина: 23' 0" (7.01m)

Макс. осадка: 6' 5" (1.96m)

Купить **Kristina — VIKING** а также выбрать подходящую вам яхту из нашего каталога яхт вам поможет опытный яхтенный брокер Андрей Шестаков. На сегодняшний день компания **Shestakov Yacht Sales Inc.** имеет большое количество яхт в собственном списке продаж, а также тесно сотрудничает со всеми крупными яхтенными производителями по всему миру.

Для того чтобы купить яхту **Kristina — VIKING** а также проконсультироваться по любому вопросу связанному с покупкой, продажей, чартером яхт позвоните по телефону **+7(918)465-66-44**.

ОГЛАВЛЕНИЕ

ОГЛАВЛЕНИЕ	2
ХАРАКТЕРИСТИКИ	3
Основная информация	3
Размеры	3
Скорость, вместимость и масса	3
Размещение	3
Корпус и палуба	3
Информация о двигателе	4
ПОДРОБНОЕ ОПИСАНИЕ	5
Specifications	5
Accommodations	5
Machinery	6
Communication	6
Navigation	6
Entertainment System	7
Galley and Laundry Equipment	7
Tenders and Toys	7
Deck Equipment	7
Security, Fire Fighting & Safety Equipment	8
Исключения	8
Отказ от ответственности	8
ФОТОГРАФИИ	9
КОНТАКТЫ	15
Контактная информация	15
Телефоны	15
Время работы	15
Адрес	15

ХАРАКТЕРИСТИКИ

Основная информация

Тип судна: Моторная яхта	Модельный год: 2002
Год постройки: 2001	Страна: United States
Открытая палуба мостика: Да	Кубрик: Да

Размеры

Длина общая: 108' 0" (32.92m)	Ширина: 23' 0" (7.01m)
Макс. осадка: 6' 5" (1.96m)	Длина привального бруса: 108' 0" (32.92m)

Скорость, вместимость и масса

Чистый вес: 215 Pounds	Объем топливного бака: 3500 Gallons
------------------------	-------------------------------------

Размещение

Всего кают: 4	Всего ком. состава: 5
Каюты экипажа: 2	

Корпус и палуба

Материал корпуса: Fiberglass

Информация о двигателе

Двигатели: 2

Производитель: MTU

Модель: 16V 2000 M90

Тип двигателя: Inboard

Тип топлива: Diesel

ПОДРОБНОЕ ОПИСАНИЕ

Specifications

Loa-108 ft Draft 6.5 ft Beam-23 ft Gross tonnage- 215 ITC Forward fuel tank-1500 gal Aft fuel tank-2000 gal Day tank-300 gal Overflow tank-50 gal Owner grey water-50 gal Guest grey water-100 gal Black water-400 gal Fresh water-800 gal Water maker sea recover aqua whisper-410 hrs 60 gal/hr Hydraulic side power stern and bow thruster- 50 hp each Stabilizers-wesmar rs1200 stabilizer fin 4800 electronic gyro Engines-Two DDC MTU 16V 2000 M90 1800 hp per engine Cummings engine Onan generators 55kw 60hz-2905 hrs stb 3288 hrs prt Fire system- sea fire H system fm200 Electronics-Garmin black box gps/chart platter, nobeltec gps/chart plotter, furuno radar, vmag wifi, furuno depth sounder, Sirius xm SatTV-Direct TV Aircon/heat-Cruisair tempered water system 160000 btu/hr Underwater lights- eight xenon bulbs surrounding the swim platform Washer and dryer- one of each in guest area bosh 500 series Alfa laval fuel scrubber- 200 gal per hour 2000-2100 rpm burning total 150 gal/hr can run 23.9 hrs

Accommodations

GENERAL Entering through the aft electric sliding doors, the salon is spacious, thoughtfully laid out and benefits from large panoramic windows to filter natural sunlight. To port is a fully equipped marble topped bar with refrigerator, icemaker and wine chiller, to starboard are built in cabinets that provide plenty of storage. The finish is in finely grained hi-gloss maple accented perfectly by fluted columns, crown moldings and a central light feature. The maple finish is perfectly complimented by light soft goods, furnishings and window treatments. On the forward bulkhead, a flatscreen TV with home theatre surround sound is surrounded by maple cabinetry and grooved columns. Forward of the salon to port is the day head finished in marble and the doghouse which provides exceptional stowage for long trips. The dining salon is separated from both the galley and the main salon and provides comfortable seating for eight in a formal setting around a contemporary glass dining table. For additional privacy there are sliding pocket doors forward of the salon and aft of the galley. There is ample storage in maple cabinetry for fine china and crystal service. The galley forward is well equipped for the crew to provide formal table service and also has an informal dining area for breakfast and morning coffee. Access to the crew accommodations is midships and forward of the galley and comprises of one twin stateroom and one double stateroom for the captain, both crew staterooms have ensuite heads and showers and are finished in similar fashion to the rest of the yacht. Bridge Deck Access to the wheel house is to starboard forward of the main salon, up to date electronics and ships monitoring systems with comprehensive back up systems are to be found at the helm console and there is also a leather sofa, helm chair and a sliding glass door to the sundeck. The sundeck is expansive with considerable seating, an alfresco dining area and a full wet bar with refrigerator, icemaker and grill for outdoor entertaining. The forward end of the flybridge is covered by a bimini and also has a complete flybridge helm position. Crew access throughout Kristina is discreet with access to the galley from the side companionway doors and access to the sundeck from either the pilothouse or aft deck. Engine Room The Euro style transom gives

access to the swim platform and houses a hydraulic passarelle. The engine room can be accessed through either the stern garage door or a companionway on the starboard side deck. The garage houses the tender and davit to leave the flybridge clear of water toys and is also large enough to contain an engineers work bench and tool cabinets. The engine room is forward of the garage, well laid out, spacious and provides plenty of room and access for maintenance. OWNER & GUESTS Access to the guest accommodation is from the main foyer forward of the salon to starboard down a semi-circular staircase. The master is a full beam stateroom aft with a king sized master bed, vanity, walk in closets, a flat screen TV with surround sound, a pantry with refrigerator and bottle storage for an after dinner drink. The master bath is beautifully finished in Italian marble and cherry trim and features his and hers sinks and a Jacuzzi bath with gold Italian fixtures. Midships are two guest staterooms port and starboard featuring twin berths and each with its own ensuite head and shower finished in similar fashion to the master. Forward is the VIP suite which is also full beam with generous use of maple trim and cabinetry, the head is also finished in similar fashion to the master with Italian marble and fixtures.

Machinery

Main Engines Engine Type: (2) MTU 16V2000 M90 @ 1800 hp each Engine Hours: Port 2700; Stbd 2700 Main Engine Gearboxes: ZF Reduction gears 2555A with 2.778:1 ratio Drive: (2) Nibral 5-bladed Propellers (1) Spare set of Propellers Generators & Electricity Output: 120/208V / 60Hz Generators: (2) Onan MDGDC Platinum Series; 55 kW Generator Hours: Port 3288; Stbd 2905 Shore Power: Atlas Shore Power Batteries Main Engine Starting: (4) Varta Generator Starting: (4) Varta General Service: (4) Varta Air Conditioning: Type: (1) Cruisair 18 ton Chilled Water System at 218,000 BTU Other Machinery Watermakers: Sea Recovery Aqua Whisper - 410 Hrs - 60 gph Stabilizers: Rodriguez Steering System: BCS Fuel Separator: Alfa Laval Fuel Treatment System - 200 gph Sewage System: Sealand Vacuflush Fresh Water System: (1) Sea Recovery 1200 GPD Aqua Compact

Communication

SATcom: KVH TracPhone 50 Mini-M SatCom Telephone System: Panasonic Digital SKU Phone System with 16 extensions SSB: Icom VHF: Furuno Cellular Phone System: Motorola Intercom: Panasonic

Navigation

Radar: (2) Furuno Black Box Radar Gyrocompass: (1) Ritchie (1) Furuno Magnetic Compass: (1) Ritchie Auto Pilot: (1) Simrad Depth Sounder: Garmin GPS: Garmin Weather FAX: Vartex Ships Computer: Runs Nobeltec Software Laser Plotter: (1) GPS Garmin Wind/Speed Log: B&G Navtex: (1) Furuno GMDSS: (1) Furuno New: Green Marine Screen (3) in Pilothouse All Black Box: Garmin 2 Garmin Touch Screens backup Running Nobeltec XO Navigation

Entertainment System

Video Equipment Master Stateroom: (1) 27" JVC Flat Screen TV Guest Stateroom - VIP (1) 27" JVC Flat Screen TV Guest Staterooms (2) (1) each 20" Sharp LCD Flat Screen TV Captain's Cabin: (1) 20" Sharp LCD Flat Screen TV Crew's Cabin: (1) 20" Sharp LCD Flat Screen TV Galley: (1) 20" Sharp Flat Screen TV Audio Equipment Main Salon: JVC Music System Dining Room: JVC Music System Aft Deck: JVC Music System Master Stateroom: JVC Home Theatre System with (1) DVD/CD/Tuner (2) Satellite Speakers (1) Center Speaker (1) Subwoofer (1) SAT A55 Sony Satellite Receiver Guest Stateroom: VIP JVC Executive Home Theatre System with (1) DVD/CD/Tuner (2) Satellite Speakers (1) Center Speaker (1) Subwoofer (1) SAT A55 Sony Satellite Receiver Guest Staterooms (2): (1) each JVC Executive Home Theatre System with (1) DVD/CD/Tuner (2) Satellite Speakers (1) Center Speaker (1) Subwoofer (1) SAT A55 Sony Satellite Receiver Captain's Cabin: JVC Executive Home Theatre System with: (1) DVD/CD/Tuner (2) Satellite Speakers (1) Center Speaker (1) Subwoofer (1) SAT A55 Sony Satellite Receiver Crew Cabin: JVC Executive Home Theatre System with (1) DVD/CD/Tuner (2) Satellite Speakers (1) Center Speaker (1) Subwoofer (1) SAT A55 Sony Satellite Receiver Flybridge: (1) Clarion AM/FM Stereo/CD Changer with auxiliary connection to salon entertainment system Wheelhouse: (1) Clarion AM/FM Stereo/CD Changer with auxiliary connection to salon entertainment system (1) Sony SAT A55 Satellite Receiver Galley: (1) Clarion AM/FM Stereo/CD Changer with auxiliary connection to salon entertainment system Foredeck Sunpad Areas: (1) Clarion AM/FM Stereo/CD Changer with auxiliary connection to salon entertainment system Speakers: (8) MB Quart Speakers with (2) mounted forward near the helm, (2) in the settee area, (2) under the radar arch and (2) in the sunpad area

Galley and Laundry Equipment

Main Galley Equipment Refrigeration/Freezer: (1) Kitchen Aid (1) SubZero double drawer freezer unit Dishwasher: (1) General Electric (1) Kitchen Aid Dishwasher Cooking Equipment: (1) Meile glass ceramic cook top Convection Oven: (1) Kenmore Microwave: (1) Kenmore Other: (1) Kenmore Garbage Compactor (1) Insinkerator Garbage Disposal Additional Galley Equipment Main Salon Refrigeration: (1) U-Line Refrigerator Icemaker: (1) Kitchenaid Icemaker Other: (1) Kitchenaid Wine Chiller Flybridge Refrigeration/Icemaker: (1) Marvel 60AR Other: (1) Electric BBQ (1) Sink and Faucet Dining Salon Refrigeration: (1) Kitchen Aid wine refrigerator Master Stateroom Refrigeration: (1) Marvel refrigerator/icemaker Laundry Equipment: Main Laundry Equipment: (1) Kenmore Washing Machine (1) Kenmore Dryer Guest area Laundry Equipment: Main Laundry Equipment: (1) Kenmore Washing Machine (1) Kenmore Dryer

Tenders and Toys

Williams 12' Jet Tender

Deck Equipment

Anchor Windlass: Sanguineti Chiavari Aft Warping Capstans: STM Bologna, Italy Davit: (1) Hydraulic davit for tender and jet ski Passerelle: (1) Retractable complete with electric hydraulic pump

Security, Fire Fighting & Safety Equipment

Security Equipment: CCTV System: Panasonic Cameras: (4) Panasonic Fire Fighting Equipment: Fire Control System: Seafire 10:BC Portable Fire Extinguishers, (1) in each room and (2) in galley in accordance with USCG Regulations Fire Extinguishers: Seafire fire extinguishing system with remote control, which includes automatic engine room fuel and air shutoff. Safety Equipment Life Rafts: (2) 8-person Inflatables Life Rings: (2) According to RINA rules and USCG approved EPIRBS: As per RINA Requirements Flares: As per RINA Requirements Medical Equipment: As per RINA Requirements Searchlights: (2) ACR RCL 100

Исключения

При продаже яхты исключаются личные вещи владельца.

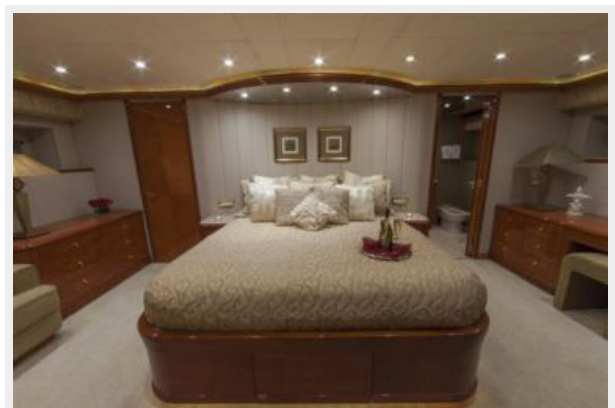
Отказ от ответственности

Компания предоставляет описание судна или яхты добросовестно, но не может гарантировать точность этой информации, а также не ручается за техническое состояние. Покупатель должен проинструктировать своих агентов или оценщиков исследовать представленную информацию более подробно, по собственному желанию. Продажа судна или яхты, изменение цены или снятие с продажи будет происходить без предварительного уведомления.

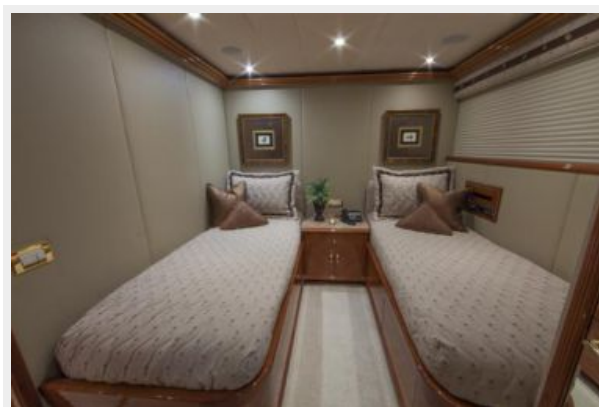
ФОТОГРАФИИ













КОНТАКТЫ

Андрей Шестаков (Andrey Shestakov) – ведущий яхтенный брокер отдела продаж яхт и судов компании Shestakov Yacht Sales Inc. Официальный представитель Shestakov Yacht Sales Inc. для русскоговорящих клиентов в центральном офисе компании в Майами/Форт Лодердейл/Флорида/США.

Контактная информация

Email: andrey@shestakovyachtsales.com

Web: shestakovyachtsales.com

Телефоны

Краснодарский край: **+7(918)465-66-44**

США, Майами, Флорида: **+1(954)274-4435**

Время работы

Понедельник – Суббота: **9:00 - 21:00**
EDT

Воскресенье: **Закрито**

Адрес



Harbour Towne Marina, 850 NE 3rd St,
STE 213, Dania, FL 33004