

ZEPHYR — ENDEAVOUR



Судостроитель: ENDEAVOUR

Год постройки: 1983

Модель: Крейсерская яхта

Цена: **ЦЕНА ЯХТЫ ПО ЗАПРОСУ**

Местонахождение: United States

Длина общая: 40' 0" (12.19m)

Ширина: 13' 0" (3.96m)

Макс. осадка: 5' 0" (1.52m)

Купить Zephyr — ENDEAVOUR а также выбрать подходящую вам яхту из нашего каталога яхт вам поможет опытный яхтенный брокер Андрей Шестаков. На сегодняшний день компания Shestakov Yacht Sales Inc. имеет большое количество яхт в собственном списке продаж, а также тесно сотрудничает со всеми крупными яхтенными производителями по всему миру.

Для того чтобы купить яхту Zephyr — ENDEAVOUR а также проконсультироваться по любому вопросу связанному с покупкой, продажей, чартером яхт позвоните по телефону **+7(918)465-66-44**.

ОГЛАВЛЕНИЕ

ОГЛАВЛЕНИЕ	2
ХАРАКТЕРИСТИКИ	3
Обзор	3
Основная информация	6
Размеры	6
Скорость, вместимость и масса	6
Размещение	6
Корпус и палуба	7
Информация о двигателе	7
ФОТОГРАФИИ	8
КОНТАКТЫ	16
Контактная информация	16
Телефоны	16
Время работы	16
Адрес	16

ХАРАКТЕРИСТИКИ

Обзор

The Endeavour 40 Center Cockpit is one of the perennial favorites offering the dual roles of comfortable living and offshore cruising in a well-built, proven Bob Johnson design. Her shoal draft of 5' makes her ideal for local and Bahamian waters. The spacious forward cabin and additional head/shower makes the Endeavour 40 CC a popular choice for the owner who likes to have friends aboard for the weekend or coastal cruise.

Zephyr comes to the market ready to cruise with many recent additions and loaded with cruising gear. She is a two owner boat which has been continually maintained and upgraded. She comes equipped with a lot of newer gear and upgrades including Garmin 4210 color chart plotter with XM Weather and integrated Auto Pilot (2011), 150% Furling Genoa and Furling Main Sail (2008) on Harken Furlers (2008), newer Fuel & Water Tanks (2008), newer West Marine Dinghy (2013) with 6 hp Mercury outboard on Dinghy Davits, newer 2000W Inverter/Charger, newer Lewmar Electric Windlass, Reverse Cycle AC/Heat, Custom Fiberglass Hardtop Bimini, Westerbeke 5kw Gen Set, Watermaker, AND MUCH MORE! (SEE FULL SPECS)

Zephyr has an enormous enclosed center cockpit for entertaining guests regardless of the weather, keel stepped mast, beautiful and spacious teak interior, two(2) enclosed cabins with ensuite heads & showers, and 6'4" headroom throughout. She is one of the stalwarts of the 80's when sailboats were built with quality and comfort foremost in mind. Call today to see firsthand why the Endeavor 40 retains both its value and its popularity as a wonderful live-a-board family cruiser.

Additional Specs, Equipment and Information:

Boat Name Zephyr Specs Keel: Full Engines Engine 1: Engine Brand: Perkins Year Built: 1983
Engine Model: 4-108 Engine Type: Inboard Engine/Fuel Type: Diesel Engine Hours: 4890
Propeller: 3 blade propeller Engine Power: 50 HP

Builder and Designer

Builder: Endeavour Yachts Designer: Bob Johnson

Tankage

Fresh Water: 170 Gallons (new in 2008) Fuel: 50 Gallon (new in 2008) Holding Tanks: 15 and 25 gallon

Accommodations

Vessel can sleep up to eight adults in three staterooms. Starting forward is the guest stateroom with Vee Berth w/filler, storage drawers and hanging locker. The forward head to starboard has

an ensuite entrance from the guest stateroom and a second door into the main salon. The head has a manual flush toilet, hot & cold pressurized water, vanity and shower. To Port in the main salon is a storage locker/bureau. The Salon contains a large pedestal mounted double drop leaf center line table and port & starboard settees that both expand to double berths. Ample storage is found underneath and outboard of the opposing settees.

The large U-shaped Galley is next aft to port at the base of the companionway and features a gimballed 3 burner propane stove & oven, double stainless steel sinks, and the undercounted refer and freezer box with 12VDC refrigeration.

A hanging locker and workbench are located to starboard, aft of the sit down Nav Station near the base of the companionway. Additional 12 cu. in. Freezer or Refrigerator located on starboard side.

Across the way is the Engine room access and electrical panel.

The Master stateroom is aft with an athwartships double berth, hanging locker, bureau drawers, a full length mirror and an ensuite head with shower. Natural illumination is provided from two deck prisms along with abundant ventilation from an opening deck hatch and three opening side ports and 12 volt fan.

Galley

Spacious but secure galley lies at the foot of the companionway to port and affords the cook easy access and conversation to both salon and cockpit guests.

Twin S/S Sink w/hot 'n cold mixer valve faucet Gimballed Propane Stove w/Oven Large Top opening Refrigeration & Freezer Custom Recessed Microwave Oven Numerous Storage Cabinets and Lockers

Electronics and Instruments

Zephyr is equipped with all the goodies including 4210C Garmin Chart Plotter tied in with Autopilot, XM Weather overlays.

New (2012) GARMIN 4210 Color Chart Plotter New (2011) GARMIN Auto Pilot (follows plotted course on Chartplotter) New (2011) GARMIN Wind Instrument (Auto Pilot Adjusts to Wind Changes) New (2008) ICOM VHF Radio w/Masthead Antenna and Emergency Railmount Antenna New (2011) GARMIN XM Radio/Weather Station (displays satellite weather on plotter) New (2012) GARMIN Marine Radio with AIC at Helm (displays commercial and pleasure traffic with name of vessel, course and vessel size) includes Coast Guard Emergency Notification of GPS Co-ordinates. ICOM ICM700 SSB Radio Portable Emergency Beacon Portable Marine Radio RITCHIE Binnacle Compass at Helm

Electrical

Twin 120VAC 30 amp circuits provide for plenty of power to run all the accessories such as air conditioning/heat, TV's, Stereos, hot water and other electrical appliances. What's even better is the genset extends all these conveniences away from the dockside noise and marina expenses to those secluded anchorages you've always dreamed of exploring. New (2011) 75 Watt Panels (2) with Blue Sky MPPT Regulator Heart Interface 2000W Inverter/Charger w/Digital Battery Monitor (2008) WESTERBEKE Diesel 5kw Gen Set New (2014) Reverse Cycle 16k BTU AC/HEAT System Two (2) 30 Amp 120VAC Shore Power Circuits w/Breaker Panel and 50 ft Cords Three (3) New Group 27 Deep Cycle House Batteries Two (2) New Dedicated Group 27 Gen Set & Engine Start Batteries

Galley

Spacious but scute galley lies at the foot of the companionway to port and affords the cook easy access and conversation to both salon and cockpit guests. •

Sail Inventory

OMAR 150% Furling Genoa w/Blue Sunbrella Protective Foot & Leech Covers (2008) OMAR Furling Mainsail behind mast w/Blue Sunbrella U/V Cover on Leech (2008) Additional Hank-On Downwind 150% Genoa Sail. Harkin Furlers (Main and Genoa) (2008)

Deck & Anchoring Hardware

Custom Fiberglass Hard Bimini (7 foot headroom) with full enclosure of both Eisenglass and screens transforms the spacious cockpit into a vast extra room for entertaining guests or lounging regardless of weather either at dockside or underway. All lines lead into the cockpit are for adjusting sails without having to go on deck in foul weather.

(2008) HARKEN Genoa Furling System Additional Secondary Forestay Twin Adjustable Whisker Poles (2008) HARKEN Behind the Mast Mainsail Furling System Custom Fiberglass Hard Bimini Top w/ 1.5 inch S/S Tubing (2008) Full Cockpit Enclosure with both Eisenglass Curtains and Insect Screens (2008) S/S Davits w/Triple Lifting Blocks & Twin Backstay Support Wires Outboard Motor Lifting Crane Lewmar Anchor Windlass with Up and Down controls on deck and at helm Twin Anchor Rollers on Bowsprit 75 lb CQR Anchor w/ 150 ft of 3/8 in Stainless Steel Anchor Chain (2008) Secondary 45 CQR w/150 ft of 3/8 in Galvanized HT anchor chain New (2012) Lightweight Danforth Anchor on Stern

Mechanical

Equipped with smooth running and well maintained 4 cylinder Perkins 4-108 Fresh Water cooled Diesel Engine. Large and powerful three blade prop makes for both swift powering into adverse seas and easy maneuvering in reverse. Engine diesel injector pump overhauled (2011) New (2008) Aluminum Fuel Tank Custom Protective S/S Keel Shoe PUR Water Maker 120VAC 18 Gal Water Heater w/Engine Heat Exchanger 12VDC Pressure Water System w/ Hot 'n Cold

Cockpit Shower and Anchor Washdown

Additional Equipment

6 Man Liferaft (needs decertification) Closed Cell Foam Cockpit Cushions (2008) Custom Adjustable Captains Seat at Helm Fenders & Docklines Original Endeavour 40CC Owners Manual Original Manuals for all equipment on boat Miscellaneous Spare Parts New (2014) West Marine Dinghy 6 hp Mercury Outboard

Основная информация

Тип судна: Крейсерская яхта

Подкатегория: Cruising/Racing Sailboat

Модельный год: 1983

Год постройки: 1983

Страна: United States

Размеры

Длина общая: 40' 0" (12.19m)

Длина по ватерлинии: 32' 0" (9.75m)

Ширина: 13' 0" (3.96m)

Макс. осадка: 5' 0" (1.52m)

Трапы: 54' 6" (16.61m)

Скорость, вместимость и масса

Водоизмещение: 25250 Pounds

Вместимость воды: 170 Gallons

Вместимость сточного бака: 40 Gallons

Объем топливного бака: 50 Gallons

Размещение

Всего кают: 3

Спальные места: 8

Корпус и палуба

Материал корпуса: Fiberglass

Информация о двигателе

Двигатели: 1

Производитель: Perkins

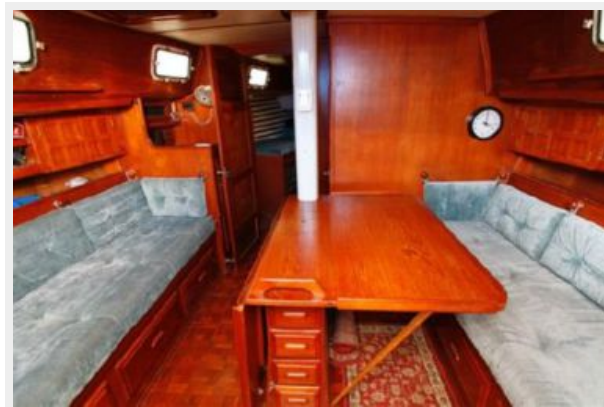
Модель: 4-108

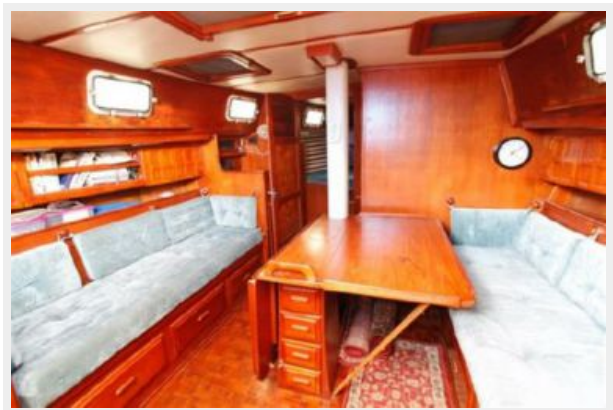
Тип двигателя: Inboard

Тип топлива: Diesel

ФОТОГРАФИИ

















КОНТАКТЫ

Андрей Шестаков (Andrey Shestakov) – ведущий яхтенный брокер отдела продаж яхт и судов компании Shestakov Yacht Sales Inc. Официальный представитель Shestakov Yacht Sales Inc. для русскоговорящих клиентов в центральном офисе компании в Майами/Форт Лодердейл/Флорида/США.

Контактная информация

Email: andrey@shestakovyachtsales.com

Web: shestakovyachtsales.com

Телефоны

Краснодарский край: **+7(918)465-66-44**

США, Майами, Флорида: **+1(954)274-4435**

Время работы

Понедельник – Суббота: **9:00 - 21:00**
EDT

Воскресенье: **Закрито**

Адрес



Harbour Towne Marina, 850 NE 3rd St,
STE 213, Dania, FL 33004