

XCELERATOR — XCELERATOR



Builder: XCELERATOR

Year Built: 2016

Model: Sport Fisherman

Price: PRICE ON APPLICATION

Location: United States

LOA: 35' 0" (10.67m)

Beam: 11' 9" (3.58m)

Max Draft: 2' 9" (0.84m)

Our experienced yacht broker, Andrey Shestakov, will help you choose and buy a yacht that best suits your needs Xcelerator — XCELERATOR from our catalogue. Presently, at Shestakov Yacht Sales Inc., we have a wide variety of yachts available on our sale's list. We also work in close contact with all the big yacht manufacturers from all over the world.

If you would like to buy a yacht Xcelerator — XCELERATOR or would like help answering any questions concerning purchasing, selling or chartering a yacht, please call +1(954)274-4435

TABLE OF CONTENTS

TABLE OF CONTENTS	2
SPECIFICATIONS	4
Basic Information	4
Dimensions	4
Speed, Capacities and Weight	4
Accommodations	4
Hull and Deck Information	4
Engine Information	4
DETAILED INFORMATION	5
Hull	5
Forward Deck	5
Cockpit	5
Helm	6
Main Cabin	6
Aft Cabin	6
Galley	7
Head	7
Tackle Storage Room	7
Bilge / Pump Room	7
Electrical System	8
Electronics	8
Tower	9
Remarks	9
Exclusions	9
Disclaimer	9
PHOTOS	10
CONTACTS	21
Contact details	21

Telephones	21
Office hours	21
Address	21

SPECIFICATIONS

Basic Information

Category: Sport Fisherman

Sub Category: Express

Model Year: 2016

Year Built: 2016

Country: United States

Cockpit: Yes

Dimensions

LOA: 35' 0" (10.67m)

Beam: 11' 9" (3.58m)

Max Draft: 2' 9" (0.84m)

Speed, Capacities and Weight

Displacement: 16000 Pounds

Gross Tonnage: 1 Pounds

Water Capacity: 40 Gallons

Fuel Capacity: 350 Gallons

Accommodations

Total Cabins: 1

Hull and Deck Information

Hull Material: Fiberglass Over Wood

Engine Information

Engines: 2

Manufacturer: Yamaha

Fuel Type: Gas

DETAILED INFORMATION

Hull

- Epoxy Resin over Wood Core Construction
- Okume Sides, Fir Bottom, Fir Transom, Fir Stringers
- Premium VectorPly Laminates
- Alexseal Fairing Materials and Top Coats
- Sea Hawk Bottom Paint
- Lenco Trim Tabs – Flush Mount
- Armstrong Outboard Bracket
- Stainless Rubrail

Forward Deck

- Non skid Surface
- SS Recessed Cleats – 10”
- Anchor Locker with Washdown
- Corecell painted toe rail
- Deck Port Hatches
- Port & Stbd Fuel & Water Fill Access

Cockpit

- Bilge Access Door
- Twin Fish Boxes
- Transom Livewell
- Enclosed Under Gunnel Storage
- Under Gunnel LED Lighting
- Self Bailing Scuppers
- Freshwater Washdown
- Saltwater Washdown
- Teak Sole, Covering Boards, & Coaming Pads
- SS Rod Holders
- Mezzanine Seating with Center Work Station
- Custom 2-Tone Upholstery
- Twin Drink Coolers
- Tackle Storage Room Access through Mezzanine
- Pull Out Grill

Helm

- Day Boat Style Console with Built in Storage
- Forward Seating with Storage/Drink Holder Console
- Three Wide Helm Seating (captain centered)
- Under Seating Storage
- Teak Sole
- Teak Helm Pod
- Overhead LED Lighting
- Courtesy LED Lighting
- Flush Mount Teaser Reels (mechanical) – Rigged thru Hardtop
- Custom 2-Tone Upholstery
- SS Steering Wheel
- Custom Forward Cabin Access Door
- Full Eisenglass Enclosure System
- Yamaha Command Link Plus Controls

Main Cabin

- Custom Teak Cabinetry
- Fwd Berth/Dinette Combination
- Custom Upholstery
- Teak Dinette Table with SS Pedestal
- 40" LED TV
- Bose Surround Sound System
- LED Lighting
- Cedar Lined Hanging Closet
- Designer Carpet
- 16,000 BTU Air/Heat
- AC GFI Protected Outlets
- High End Soft Good Wall Coverings
- Overhead Berth Cabinetry

Aft Cabin

- Twin Berths – Each 3'x7'
- Custom Linens and Mattress
- Teak Center Night Stand with Storage
- Built in Storage Cabinets
- Carpet Flooring
- Recessed LED Lighting
- 32" LED TV

- High End Soft Good Wall Coverings

Galley

- Corian Counter Top
- SS Microwave Oven
- SS Refrigerator
- Single Burner Cook Top (electric)
- Storage Cabinets
- Nickel Finish Hardware
- Recessed LED Lighting

Head

- Corian Counter Top
- LED Lighting
- Teak Vanity
- Handheld Shower System
- Sump Pump Drain System
- Electric Toilet
- Mirror
- Bright White Wall Finish
- Teak Door and Casing

Tackle Storage Room

- Horizontal Rod Storage Rack
- Port & Stbd Built in Storage Cabinetry
- LED Lighting
- Bilge/Pump Room Access
- Custom SS Access Ladder
- Climate Controlled
- Synthetic Flooring System

Bilge / Pump Room

- Superior Finish with Top Coat Paint
- Raised Standing Platform
- Saltwater Washdown Pump
- Freshwater Pump

- Livewell Pump
- All Yacht Grade Plumbing Hose
- (3) Automatic/Manual Bilge Pumps
- Fire Extinguisher System
- Aluminum Fuel Tank
- All SS Hardware
- LED Lighting
- Waste Holding Tank

Electrical System

- All Marine Grade Tinned Wire
- Czone Digital switching
- Digital Monitoring System
- 50' Shore Power Cord 30 Amp
- Mastervolt AGM Batteries
- Mastervolt Mass Combi Inverter
- Mastervolt Battery Charger
- Galvanic Isolation System
- Battery Paralleling System
- Fully Bonded System
- Custom Switch Panels
- Onboard Camera System (3)

Electronics

- (3) Garmin 8215 Chartplotters at Helm
- (1) Garmin 8212 Chartplotter in Cockpit
- (2) Garmin VHF Radios
- Garmin Autopilot System
- Garmin GSD 26 Sounder
- SS Airmar Thru Hull Chirp Transducer
- Garmin AIS Tracking System
- Garmin 8208 at Upper Station
- Garmin Open Array radar
- Garmin Secondary Auto Pilot Control
- Side Power Bow Thruster
- SeaStar Optimus power steering system
- Intellian Satellite
- Intellian DirecTV Receiver
- JL Audio Amp (2)
- JL Audio Sub (2)

- JL Audio 8" Speakers (6)
- Interior LED TVs 40" & 32"
- Interior Bose Surround System

Tower

- Full Tower with Upper Control Station - Bausch
- Custom Lower Hardtop with Recessed Lighting
- Custom Radar Arch
- Custom Gap Hardtop
- High Polished Aluminum Structure
- Custom Molded Electronics Box
- Complete Yamaha Controls & Electronics
- SS Steering Wheel
- Rupp Outriggers with carbon fiber poles
- Custom Upholstery Upper Station

Remarks

Xcelerator Boatworks is debuting the new 35 Custom Express with a full tower. This is a fully custom North Carolina built boat created with the concept of a shallow draft and outboard engines. This design allowed the builder to enlarge the cabin space, providing three berths, a galley and a head. The beautiful top side features a custom console, helm chairs, and spacious cockpit. This is an extremely versatile vessel and will turn heads everywhere she goes.

Exclusions

Owner's personal belongings.

Disclaimer

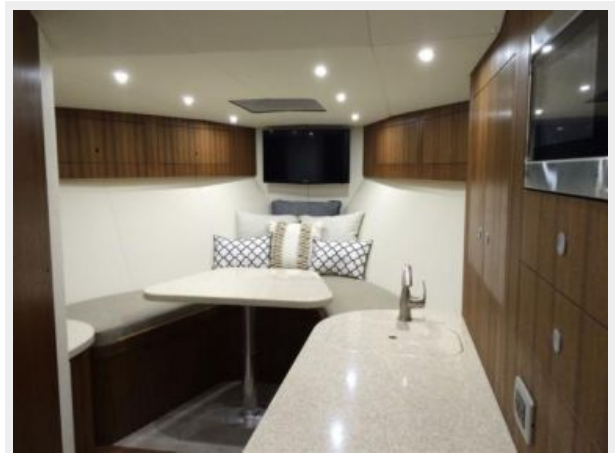
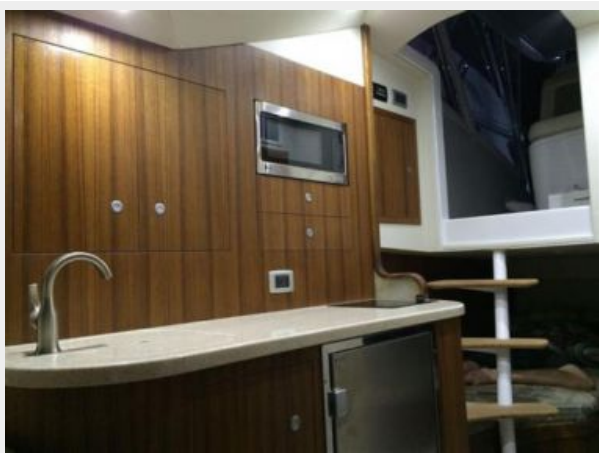
The Company offers the details of this vessel or yacht in good faith but cannot guarantee or warrant the accuracy of this information nor warrant the condition of the vessel. A buyer should instruct his representatives, agents, or his surveyors, to investigate such details as the buyer desires validated. This vessel or yacht is offered subject to prior sale, price change, or withdrawal without notice.

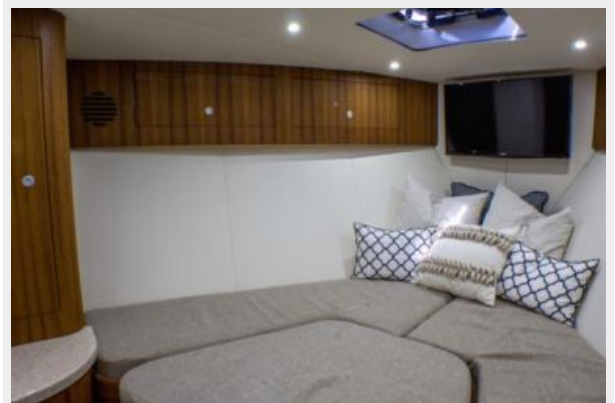
PHOTOS























CONTACTS

Andrey Shestakov, leading yacht broker of the sales department of Shestakov Yacht Sales Inc. Shestakov Yacht Sales Inc., the official representative of the Miami/Fort Lauderdale FL headquarters.

Contact details

Email: andrey@shestakovyachtsales.com

Web: shestakovyachtsales.com/en/

Telephones

USA: +1(954)274-4435

Office hours

Monday – Saturday: **9:00 - 21:00** EDT

Sunday: **closed**

Address



Harbour Towne Marina, 850 NE 3rd St,
STE 213, Dania, FL 33004