

КОРКАРУ — AZIMUT



Судостроитель: [AZIMUT](#)

Год постройки: 2006

Модель: Моторная яхта

Цена: **ЦЕНА ЯХТЫ ПО ЗАПРОСУ**

Местонахождение: United States

Длина общая: 80' 0" (24.38m)

Ширина: 18' 11" (5.77m)

Макс. осадка: 5' 10" (1.78m)

Купить **КОРКАРУ — AZIMUT** а также выбрать подходящую вам яхту из нашего каталога яхт вам поможет опытный яхтенный брокер Андрей Шестаков. На сегодняшний день компания **Shestakov Yacht Sales Inc.** имеет большое количество яхт в собственном списке продаж, а также тесно сотрудничает со всеми крупными яхтенными производителями по всему миру.

Для того чтобы купить яхту **КОРКАРУ — AZIMUT** а также проконсультироваться по любому вопросу связанному с покупкой, продажей, чартером яхт позвоните по телефону **+7(918)465-66-44**.

ОГЛАВЛЕНИЕ

ОГЛАВЛЕНИЕ	2
ХАРАКТЕРИСТИКИ	3
Основная информация	3
Размеры	3
Скорость, вместимость и масса	3
Размещение	3
Корпус и палуба	3
Информация о двигателе	4
ПОДРОБНОЕ ОПИСАНИЕ	5
Major Features	5
Исключения	9
Отказ от ответственности	10
ФОТОГРАФИИ	11
КОНТАКТЫ	14
Контактная информация	14
Телефоны	14
Время работы	14
Адрес	14

ХАРАКТЕРИСТИКИ

Основная информация

Тип судна: Моторная яхта

Подкатегория: Flybridge

Модельный год: 2006

Год постройки: 2006

Страна: United States

Открытая палуба мостика: Да

Размеры

Длина общая: 80' 0" (24.38m)

Ширина: 18' 11" (5.77m)

Макс. осадка: 5' 10" (1.78m)

Скорость, вместимость и масса

Вместимость воды: 397 Gallons

Объем топливного бака: 1585 Gallons

Размещение

Всего кают: 4

Каюты экипажа: 2

Койки экипажа: 3

Спальных мест экипажа: 3

Комм. состав экипажа: 1

Корпус и палуба

Материал корпуса: Fiberglass

Информация о двигателе

Двигатели: 2

Производитель: Caterpillar

Модель: C-30

Тип топлива: Diesel

ПОДРОБНОЕ ОПИСАНИЕ

Major Features

Master Stateroom

Three carpeted steps down with three step lights Full Beam Stateroom Carpeted sole Ultrasuede overhead with recessed lights King size Island berth Two swing -arm reading lamps Mirror on aft bulkhead Overhead soffit with two recessed lights Oval deadlights, three port and three starboard, with drop shades and curtains; matching lamrequins, port and starboard Built-in vanity, starboard, with mirror, stool; six drawers; two cabinets Walk-in closet with full length mirror; built-in drawers; three recessed lights Built-in dresser, port, with drawers and cabinets

Built-in drawers with entertainment center, starboard, with: Sharp television, Bose Lifestyle AM-FM/CD player

Under Master Stateroom Sole: Fiberglass gray water tank

Master Head

Marble sole Fiberglass overhead with recessed lights Fiberglass soffit over countertop with three recessed lights Built-in vanity, outboard, with marble countertop and tow sinks Two mirrored medicine cabinets Porthole with shades Tecma head Walk-in shower with overhead light, shower head on hose; shower nozzle; hot cold faucet; teak grate sole Tecma bidet

VIP Stateroom

Carpeted sole Ultrasuede overhead with one recessed light Cherry wood overhead soffit with eight recessed lights Curtains Island berth Two drawers below berth, aft Built-in countertops, port and starboard outboard Two swing-away lamps Cruisair SMX air conditioning control Sony AM-FM/CD player Sony television Walk-in closet, starboard, with overhead recessed lights

Under VIP Stateroom Sole

Light with safety lens Bow thruster motor and drive shaft

VIP Head

Teak deck and grate in shower stall Fiberglass overhead with four recessed lights Built-in curved wood cabinet, port, with marble countertop and backsplash, sink with faucet Storage locker, outboard Wood frame mirror over sink Tecma head Circular lexan door to shower area Showerhead on hose, overhead shower head, four shower nozzles

Port Guest Stateroom

Carpeted sole Ultra suede overhead with recessed lights Single berths, port and starboard Air

conditioning unit, under berth Mirrored panels, aft Two swing arm lights Hanging locker, port with light Cruisair SMX air conditioning control Two stereo speakers Porthole with shade Sony AM-FM/CD player

Port Guest Head

Teak sole and grate in shower stall Fiberglass overhead with three recessed lights Built-in cabinet, port forward, with marble countertop sink and faucet Storage locker, outboard Tecma head Porthole Dropshade Shower area with circular Lexan door, fixed shower head, shower head on hose with wall mount, four shower nozzles, overhead light

Starboard 2nd Guest Stateroom

Carpeted sole Ultrasuede overhead with four recessed lights Twin Berths Curtains Porthole Built-in nightstand between berths Sony AM-FM/CD player with two stereo speakers Mirrored panels on forward bulk head Two swing-arm reading lamps Air conditioning units, under outboard berth Hanging locker, starboard, with light

Day Head / Starboard 2nd Guest Head

Entry via companionway and starboard stateroom Teak sole and grate in shower stall Fiberglass overhead with recessed lights Built-in vanity with marble countertop and sink Mirrored panel above sink Storage locker, outboard Tecma head Porthole with dropshade Shower with Lexan circular door Shower stall with circular door, teak grate sole, mounted shower head, shower head on hose, four shower nozzles, hot/cold water faucet; overhead light

Crew Lounge

Eight steps down from galley with courtesy step lights Vinyl sole Vinyl overhead with recessed lights Portlight with drapes L-shaped dinette, converts to berth Built-in cabinet with granite countertop, stainless steel sink, single-lever water faucet Miele Novotronic T4463C clothes dryer Miele Novotronic W3365 clothes washer Cruisair SMX air conditioning control Frigomar refrigerator Door to engine room Three 29.8-kg CO2 cylinders Two pre-release cylinders Sony AM-FM/CD player Sony television

Under Crew Quarters Sole

High water alarm switch, port and starboard Manifold to hot/cold water distribution Manifold bite pick-up

Crew Head

Vinyl sole Fiberglass overhead with recessed lights Fiberglass vanity with molded sink Tecma head Mirror at vanity Shower area with circular door, overhead light, shower head on hose, hot/cold faucet

Starboard Crew Stateroom

Vinyl sole Vinyl overhead with recessed lights Cruisair SMX air conditioning control Upper and lower single berth Porthole with drapes Hanging locker, aft

Electrical Equipment Electrical Circuit: 220V Outside Equipment/Extras Electric windlass

Topsides

Fuel fill Water fill Waste outlet Two 50amp Shore Power inlets Three Steps to aft deck Teak over fiberglass swim platform Personal watercraft locker, starboard, with winch and blower Personal watercraft locker, port, with winch, blower, and line storage containers Hydraulic swim ladder

Flybridge

Fiberglass decks with teak overlay Curved seating, port Curved L-seating, starboard Oval table, starboard Fiberglass storage cabinet, starboard forward Bench helm seat, forward Windscreen with stainless steel frame Bench helm seat, forward Windscreen with stainless steel frame Caterpillar digital display Caterpillar display control panel Stainless steel safety rails Euro Vinyl 12 person life raft OpacMare davit Stern light Zenith compass Steering wheel Trim tab level indicator Delta Nav intercom Stainless steel grab rail, port and starboard American Bow Thruster control lever Searchlight controls ZF single-lever controls to each engine

Radar Arch with: GPS antenna Single horn Radar scanner Sea Tel satellite TV Antenna Sea Tel Wave Call 3000 Sat phone antenna Searchlight VHF antenna Two stereo speakers Three recessed lights Forward Navigation lights Anchor light

Foredeck

Teak over fiberglass deck Two stainless steel bow cleats Two hawse eyes Flagstaff

Hatch to: Lofrans windlass with remote control Hand-held shower Fire station chain locker, port and starboard Approximately 90-lb stockless anchor with 250' of chain Lights with safety lenses 250' of chain Anchor wash down shut-off valve

Decks and Superstructure

Teak decks, port and starboard Stainless steel handrails with port and starboard fore and aft breakaways Hawse eyes with integral cleats, two port and two starboard Stereo speakers at sun-lounge Two windshield wipers with irrigators Overhead deck lights, four port and four starboard Side deck door, port and starboard

Aft Deck

Fiberglass overhang with recessed lights Two stereo speakers Teak over fiberglass deck Locker, port forward Stern cleat, port and starboard Hawse eyes, port and starboard, with rollers

Lofrans warping winch, port and starboard, with foot switch Wood table on dual stainless steel pedestals Three lockers, aft Fire hose outlet, in center locker Control panel for aft stairway, port hatch, starboard hatch, and swim ladder Stainless steel handrail Drink box, starboard forward

Pilothouse

Marble sole Vinyl overhead panels with recessed lights Leather dash pad and helm Leather seating with adjustable center seat Cruisair SMX air conditioning control Two recessed red lights over helm area Built-in wood footrest Wood steering wheel Single-lever ZF controls to each engine Touch-screen control panel to vessel monitor/control system White Star compass Delta Nav intercom American Bow Thruster control lever Two stainless steel grab rails Caterpillar digital and analog displays Raymarine Ray 240E VHF radio Raymarine ST90 autopilot/display Raymarine E120 unit GME EPIRB battery CAME CCTV camera control Raymarine STL90 rudder angle indicator

Galley

Laminate sole Fiberglass overhead paneling with recessed lights Built-in refrigerator and freezer, forward Pantry, forward inboard Drawer, lower on bulkhead Door to port deck Two cherrywood cabinets, port outboard and centerline inboard, w/ granite countertops Miele 4-burner stovetop Miele oven Miele microwave oven Two round stainless steel sinks Miele dishwasher Single-lever faucet with spray hose Built-in cabinets overhead, port outboard and centerline inboard Stairway to crew quarters and engine room, aft ISE trash compactor

Salon

Carpeted sole Overhead paneling with recessed lights Vinyl-covered air conditioning ducts with cherry wood trim, port and starboard Wood valances, port and starboard Drop-shades and drapes, port and starboard Drapes, aft Curved cherry cabinetry, port, with Fujitsu flat screen television on remote control lift Bose speakers, port and starboard Built-in chair, aft Burlled wood countertop, port and starboard outboard Bose stereo Coffee table, port and starboard

Dining Salon

Marble tiled sole Cherry wood overhead trim piece with inlay and recessed lights Built-in cabinetry, port, with privacy shutters to galley, three lower cabinets for secured glassware and china storage; three overhead lights Display cabinet, starboard aft Oval dining table with 8-chairs Frigomar ice maker Electronic ship's safe

Forward Companionway

Five carpeted steps Carpeted sole Vinyl overhead with recessed lights Stainless steel handrail
Overhead access panel

Under Forward Companionway

Electric/automatic bilge pump with float switch High water alarm sensor

Under Companionway Sole, Aft

Fiberglass backwater tank Light with safety lens Blackwater discharge pump Freshwater
distribution manifold with shut-off valves Grey water discharge pump

Engine Room

Atlas Frequency Converter Fluorescent overhead A/C lights with safety lenses Kohler 27kw
generator, with 1100 hours Kohler 19kw generator, with 800 hours Racor fuel filters to each
generator Hydraulics to davit, swim ladder, pod hatches and step door, trim tabs, steering Mass
24/75 automatic battery chargers for engine batteries and ship's batteries Main A/C circuit panel
Two fiberglass muffler to generators with water separators Two 24-volt freshwater system pumps
with accumulator tank, filter and pressure gauge Water heater Three Frigomar refrigeration
compressors Air conditioning units, two port and two starboard Dripless shaft seals, port and
starboard 24-Volt fuel transfer pumps Bilge pump to six compartment manifold with shut-off
valves Hand operated bilge pump Battery switches to each generator, each engine, ship's
service, and Bow thruster power selector switch (port or starboard generator) Fuel supply
manifold, centerline forward below decks Electric/automatic bilge pump High water alarm switch
220-volt fire pump Sixteen 6-volt batteries to ship's service below generators Two 12 volt
batteries starboard to main engines Manual oil change pump to each engine Mechanical gauges
to both engines; oil pressure, fuel pressure, engine oil temperature, transmission oil pressure,
transmission oil temperature, jacket water temperature Engine hours meters 390 hours port and
390 starboard Emergency steering wheel and valves Air conditions raw water circulation pump
A/C and D/C electric distribution panel Idromar watermaker Two CO2 handheld fire extinguishers
ZF electronic engine control boxes 12 Volt Batteries to each generator, aft Water heater

Rudder Compartment, Aft of Engine Room

Two hydraulic steering actuators Rudder feedback sensor Electric/automatic bilge pump High
water alarm switch

Исключения

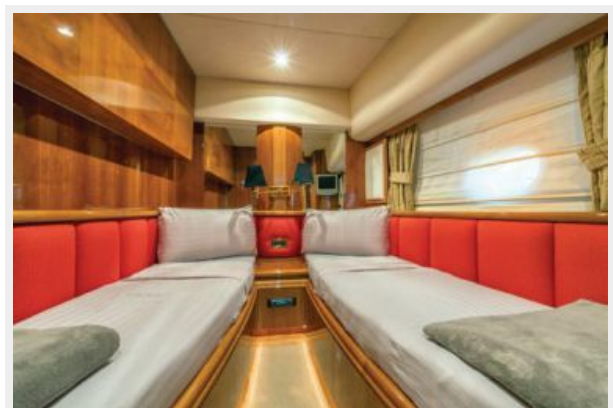
При продаже яхты исключаются личные вещи владельца.

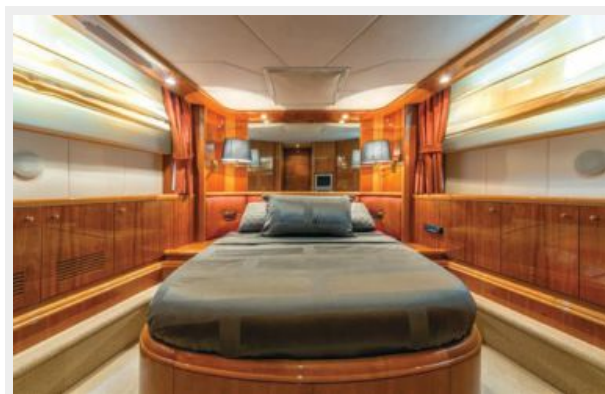
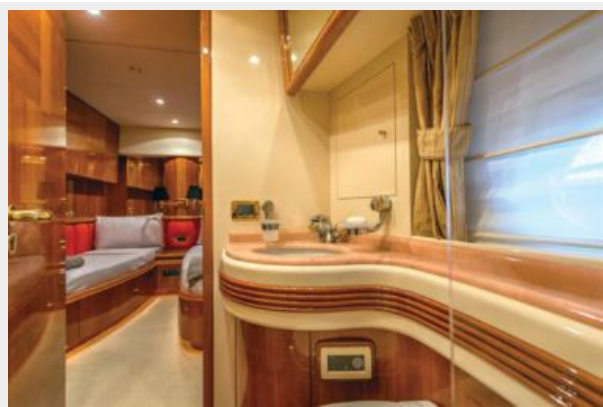
Отказ от ответственности

Компания предоставляет описание судна или яхты добросовестно, но не может гарантировать точность этой информации, а также не ручается за техническое состояние. Покупатель должен проинструктировать своих агентов или оценщиков исследовать представленную информацию более подробно, по собственному желанию. Продажа судна или яхты, изменение цены или снятие с продажи будет происходить без предварительного уведомления.

ФОТОГРАФИИ







КОНТАКТЫ

Андрей Шестаков (Andrey Shestakov) – ведущий яхтенный брокер отдела продаж яхт и судов компании Shestakov Yacht Sales Inc. Официальный представитель Shestakov Yacht Sales Inc. для русскоговорящих клиентов в центральном офисе компании в Майами/Форт Лодердейл/Флорида/США.

Контактная информация

Email: andrey@shestakovyachtsales.com

Web: shestakovyachtsales.com

Телефоны

Краснодарский край: **+7(918)465-66-44**

США, Майами, Флорида: **+1(954)274-4435**

Время работы

Понедельник – Суббота: **9:00 - 21:00**
EDT

Воскресенье: **Закрито**

Адрес



Harbour Towne Marina, 850 NE 3rd St,
STE 213, Dania, FL 33004