

DIAMOND DI — CRUISERS YACHTS



Builder: [Cruisers Yachts](#)

LOA: 44' 0" (13.41m)

Year Built: 2001

Beam: 15' 4" (4.67m)

Model: Motor Yacht

Min Draft: 3' 3" (0.99m)

Price: PRICE ON APPLICATION

Location: United States

Our experienced yacht broker, Andrey Shestakov, will help you choose and buy a yacht that best suits your needs **Diamond Di — Cruisers Yachts** from our catalogue. Presently, at Shestakov Yacht Sales Inc., we have a wide variety of yachts available on our sale's list. We also work in close contact with all the big yacht manufacturers from all over the world.

If you would like to buy a yacht **Diamond Di — Cruisers Yachts** or would like help answering any questions concerning purchasing, selling or chartering a yacht, please call **+1(954)274-4435**

TABLE OF CONTENTS

TABLE OF CONTENTS	2
SPECIFICATIONS	3
Overview	3
Basic Information	3
Dimensions	3
Speed, Capacities and Weight	3
Accommodations	4
Hull and Deck Information	4
Engine Information	4
DETAILED INFORMATION	5
Manufacturer Provided Description	5
Electronics/Navigation	5
Electrical	5
Deck	6
Mechanical	6
Galley	6
Additional Equipment	7
Disclaimer	7
Exclusions	7
Disclaimer	7
PHOTOS	8
CONTACTS	11
Contact details	11
Telephones	11
Office hours	11
Address	11

SPECIFICATIONS

Overview

This Cruisers 4450 Motor Yacht is a Very Clean, Professionally Maintained Boat

Bow Thruster

Upgraded Garmin Electronics

Custom Davit

Cockpit A/C

Fusion Stereo

Basic Information

Category: Motor Yacht

Sub Category: Aft Cabin

Model Year: 2001

Year Built: 2001

Country: United States

Fly Bridge: Yes

Dimensions

LOA: 44' 0" (13.41m)

Beam: 15' 4" (4.67m)

Min Draft: 3' 3" (0.99m)

Speed, Capacities and Weight

Displacement: 38000 Pounds

Water Capacity: 140 Gallons

Holding Tank: 100 Gallons

Fuel Capacity: 500 Gallons

Accommodations

Total Cabins: 3

Total Heads: 2

Hull and Deck Information

Hull Material: Fiberglass

Deck Material: Fiberglass

Hull Configuration: Modified Deep Vee

Hull Color: White

Hull Finish: Plastic

Engine Information

Engines: 2

Manufacturer: Volvo

Model: 450 HP

Engine Type: Inboard

Fuel Type: Diesel

DETAILED INFORMATION

Manufacturer Provided Description

The Cruisers 4450 Express Motoryacht is a sleek, powerful yacht that offers all the advantages of express-style cruising. The cockpit provides comfortable seating associated with traditional express boats but eliminates the typical separation of guests between a bridge and aft deck. The cockpit includes a wetbar that can accommodate a refrigerator and ice maker, and a full windshield provides excellent wind and weather protection. Owners will also be able to select a Bimini top enclosure that attaches to a standard arch, or an aft hardtop with wing doors and a full weather enclosure. This boat offers triple-stateroom accommodations in a true aft-cabin interior. The master stateroom offers both privacy and luxury, is located aft, and features an island berth, walk-in closet, and a private head with shower. A guest stateroom is located forward, and a third stateroom is located amidships. The spacious, bright main salon offers additional sleeping accommodations with a large convertible dinette, full service galley, and an optional L-shaped sofa sleeper.

Electronics/Navigation

ICOM VHF RADIO

Garmin GPS/CHART PLOTTER/RADAR 12"

Garmin chart plotter 7"

COMPASS

Raymarine Autopilot

Raymarine Tridata

Volvo electronic engine display units

Electrical

ONAN 11.5KW GENERATOR MODEL

220/125 VOLT SHORE POWER WITH GLENDENNING CABLE MASTER

2-12 VOLT HOUSE BATTERIES

2-12 VOLT STARTING BATTERIES

1-12 VOLT GENSET BATTERY

1-12 VOLT ACCESSORY BATTERY

CI CHARGER 1210054 BATTERY CHARGER

Deck

MAXWELL ANCHOR WINDLASS WITH RODE AND CHAIN

50LB PLOW ANCHOR

FORE DECK ANCHOR LOCKER

AFT DECK HARDTOP WITH FULL ENCLOSURE AND WING DOORS

BIMINI TOP WITH FULL ENCLOSURES

AFT DECK WET BAR

AFT DECK CRUISAIR REVERSE CYCLE MARINE AC

Mechanical

TRIM TABS

BOW THRUSTER

HYDRAULIC STEERING

DOCKSIDE WATER CONNECTION

RAYCOR ENGINE AND GENERATOR FUEL FILTERS

OIL CHANGE SYSTEM

CENTRAL VAC SYSTEM

3-AUTOMATIC/MANUAL BILGE PUMPS

CRUISAIR REVERSE CYCLE MARINE AC

VACU-FLUSH MSD'S

CLOTHES WASHER/DRYER

Galley

2 BURNER GLASS COOKTOP STOVE

DUAL VOLTAGE Stand up REFRIGERATOR/FREEZER

MICROWAVE/CONVECTION OVEN

Additional Equipment

SAT TV

600 lb. Davit

Life raft

Updated Canvas, with mesh sun shades for isinglass

Upgraded Fusion stereo

Bow thruster

Cockpit A/C

Cockpit flat screen TV

Disclaimer

The Company offers the details of this vessel in good faith but cannot guarantee or warrant the accuracy of this information nor warrant the condition of the vessel. A buyer should instruct his agents, or his surveyors, to investigate such details as the buyer desires validated. This vessel is offered subject to prior sale, price change, or withdrawal without notice.

Exclusions

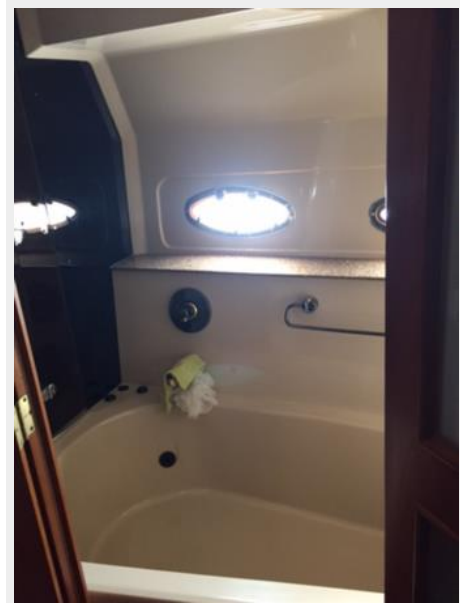
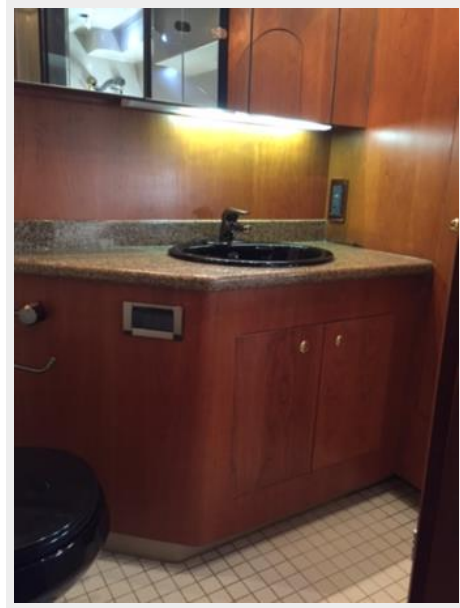
Owner's personal belongings.

Disclaimer

The Company offers the details of this vessel or yacht in good faith but cannot guarantee or warrant the accuracy of this information nor warrant the condition of the vessel. A buyer should instruct his representatives, agents, or his surveyors, to investigate such details as the buyer desires validated. This vessel or yacht is offered subject to prior sale, price change, or withdrawal without notice.

PHOTOS







CONTACTS

Andrey Shestakov, leading yacht broker of the sales department of Shestakov Yacht Sales Inc. Shestakov Yacht Sales Inc., the official representative of the Miami/Fort Lauderdale FL headquarters.

Contact details

Email: andrey@shestakovyachtsales.com

Web: shestakovyachtsales.com/en/

Telephones

USA: +1(954)274-4435

Office hours

Monday – Saturday: **9:00 - 21:00** EDT

Sunday: **closed**

Address



Harbour Towne Marina, 850 NE 3rd St,
STE 213, Dania, FL 33004