

LION'S DEN — VIKING



Судостроитель: VIKING

Год постройки: 2014

Модель: Катер для спортивной рыбалки

Цена: **ЦЕНА ЯХТЫ ПО ЗАПРОСУ**

Местонахождение: United States

Длина общая: 82' 0" (24.99m)

Ширина: 22' 4" (6.81m)

Макс. осадка: 5' 6" (1.68m)

Крейс. скорость: 32 Kts. (37 MPH)

Макс. скорость: 36 Kts. (41 MPH)

Купить **Lion's Den — VIKING** а также выбрать подходящую вам яхту из нашего каталога яхт вам поможет опытный яхтенный брокер Андрей Шестаков. На сегодняшний день компания **Shestakov Yacht Sales Inc.** имеет большое количество яхт в собственном списке продаж, а также тесно сотрудничает со всеми крупными яхтенными производителями по всему миру.

Для того чтобы купить яхту **Lion's Den — VIKING** а также проконсультироваться по любому вопросу связанному с покупкой, продажей, чартером яхт позвоните по телефону **+7(918)465-66-44**.

ОГЛАВЛЕНИЕ

ОГЛАВЛЕНИЕ	2
ХАРАКТЕРИСТИКИ	4
Основная информация	4
Размеры	4
Скорость, вместимость и масса	4
Размещение	4
Корпус и палуба	4
Информация о двигателе	5
ПОДРОБНОЕ ОПИСАНИЕ	6
OVERVIEW	6
Исключения	35
Отказ от ответственности	35
ФОТОГРАФИИ	36
Salon	36
Day Head	37
Dinette	37
Galley	38
Pantry	38
Laundry	39
Pantry	39
Media	39
Master Stateroom	39
Master Head	41
Forward Stateroom	42
Forward Head	43
Forward Port Stateroom	43
Forward Port Head	44
Starboard Stateroom	44

Starboard Head	45
Mid Port Stateroom	45
Mid Port Head	46
Enclosed Flybridge	46
Enclosed Helm	47
Tower	49
Tower Helm	50
Cockpit	50
Engine Room	52
КОНТАКТЫ	56
Контактная информация	56
Телефоны	56
Время работы	56
Адрес	56

ХАРАКТЕРИСТИКИ

Основная информация

Тип судна: Катер для спортивной рыбалки

Подкатегория: Convertible

Модельный год: 2014

Год постройки: 2014

Страна: United States

Открытая палуба мостика: Да

Кубрик: Да

Размеры

Длина общая: 82' 0" (24.99m)

Ширина: 22' 4" (6.81m)

Макс. осадка: 5' 6" (1.68m)

Скорость, вместимость и масса

Крейс. скорость: 32 Kts. (37 MPH)

Макс. скорость: 36 Kts. (41 MPH)

Водоизмещение: 162250 Pounds

Чистый вес: 162250 Pounds

Вместимость воды: 450 Gallons

Вместимость сточного бака: 280 Gallons

Объем топливного бака: 3587 Gallons

Размещение

Всего кают: 5

Всего ком. состава: 6

Корпус и палуба

Материал корпуса: Fiberglass

Комплектация корпуса: Modified V-Hull

Цвет корпуса: White

Дизайнер корпуса: Viking

Информация о двигателе

Двигатели: 2

Производитель: MTU

Модель: 16V2000-M94

Тип двигателя: Inboard

Тип топлива: Diesel

ПОДРОБНОЕ ОПИСАНИЕ

OVERVIEW

Whether you're fishing or cruising, "Lion's Den" is truly one-of-a-kind 82 Viking that has the plan A-five stateroom yacht layout. Built to entertain family and friends or hit the tournament circuit. With plenty of storage throughout, optional fuel, and two Seakeeper gyro stabilizers you can fish or cruise. With a cruise speed of 32 knots and a top end of 36 knots, you will get to your destination quickly and in comfort and style.

"Lion's Den" has all the equipment any serious offshore angler could want and she is a proven fish raiser. Her Palm Beach Tower has a full array of electronics, single lever controls with bow thrusters in the sticks, and dedicated teaser reels. The ultimate electronics package gives you every technological advantage possible.

Enter her massive salon through the electronic sliding door and lavish yourself in luxury. Well-appointed custom interior with custom quartz counter top in the Galley with programmable lighting, custom Amtico flooring and high gloss joinery throughout. The salon is suited to host large parties or to relax with family and friends after an exciting day of fishing. Alternatively, host your guests on the air-conditioned enclosed flybridge. Here, too, entertainment is made easy with a pop-up flat screen TV, a plush sofa and companion seats, Sub-Zero refrigerator drawers, and a large custom liquor storage cabinet. "Lion's Den" has an unmatched audio/visual system that is sure to keep everyone entertained.

Below deck, five staterooms are tastefully decorated and provide complete privacy. Her full beam master is the ultimate in luxury. The large utility closet also converts to a sixth stateroom, as needed.

Viking Yachts spared no details when building this beauty.

The list of **CUSTOM** items includes:

- Three 6 ton chillers for AC vs standard (2) 5 ton chillers
- V Kool treatment installed on all windows

- “Rite Aire” dehumidifier in salon and master stateroom
- Sound down installation throughout Salon and Galley
- URC control for Audio video
- Custom quartz counter tops throughout with programmable lighting
- Two Gyro stabilizer by Seakeeper 26 located in cockpit and additional 9 located in engine room
- Mezzanine AC at both the flybridge and cockpit seating
- Cockpit teak deck and covering boards
- Custom transom livewell
- Viking high performance package with VC offshore bottom paint
- Custom electronics package including video conferencing

SALON

- Air conditioning with reverse cycle heat that circulates from concealed registers behind the valances to maximize comfort while minimizing noise and drafts –individual temperature control
- Blinds for desired natural lighting and additional privacy
- Cocktail table, high gloss finish, hi-lo
- Flooring, custom Amtico at salon entrance and wall-to wall carpet with lead lined padding for sound absorption by “Sound Down”
- Dimmers for quartz lights
- Teak wire box
- Privacy blinds
- Dewberry style sofa for easy storage access
- Dinette dimmers on overhead low voltage lights
- Teak trim where Amtico floor meets carpet
- Teak dinette table with teak pedestal

- Home theater center with 60" HD flat screen on a raise and lower mechanism with antenna or cable hook-up, and Bose system with custom surround sound
- Teak strips in seems of headliner
- Full canvas carpet runner
- Subwoofer mounted on rubber mounts to reduce noise
- Main electrical panel with AC selector breakers and Moritz Octoplex
- Custom bottle and glass storage in starboard cabinet with mirror back
- Teak cabinetry with drawers
- Custom bar stools aft
- Ice maker, clear ice type concealed in teak cabinetry behind door
- Indirect decorative rope lighting behind valances, 24V/120V
- Lounge, L-shaped with rod storage underneath
- Lambrequins, fabric upholstered-inlaid in teak frames
- Lighting, overhead LED lights recessed in headliner with dimmer switches
- Main electrical panel with AC selector breakers and Moritz Octoplex touch screen monitor
- Pillows, decorative throws for sofa
- Salon door, electric sliding, molded fiberglass door with window and teak interior finish, with key lock
- Teak cabinetry with drawers and bottle storage
- Teak strips in headliner
- Teak trim where the Amtico floor meets carpet
- Upholstery and window treatments
- Valances custom teak, fluted
- Windows, fixed, frameless side windows with tinted, tempered glass for style, natural lighting, and privacy
- All windows have V Kool installed. V Kool makes the vessel cooler without adding the tint

GALLEY/ DINETTE

- Decorator supplied bar stools
- Custom tile backsplash, Mirage glass
- Blinds
- Companionway entrance located behind dinette
- Countertop, galley, custom quartz with programmable lighting
- Custom galley island with refrigeration and freezers, custom quartz countertop and three bar stools with overhang for bar stool area
- Dinette couch with removable cushions and storage underneath
- Dinette table, high gloss finish with teak pedestal, thru-bolted
- Dishwasher
- Electric range, 4-burner cook top, surface mounted
- Exhaust fan, high velocity
- Flooring, custom Amtico with additional sound down installation
- Garbage disposal in sink
- Lambrequins, fabric upholstered-inlaid in teak frames
- LED lighting-backsplash
- Lighting, overhead LED lights recessed in headliner
- Throw pillows throughout including designer cords and fringes
- Ultra-leather sofas in salon and master stateroom and dinette
- Upgraded window panel fabric and trim
- Microwave/convection oven located in upper galley cabinet
- Refrigerator and freezer, Sub-Zero, large capacity, deep-drawer under-counter style with varnished teak faces, (2) refrigerator units and (1) freezer unit
- Sink, stainless steel, under mounted in countertop with satin nickel galley faucet
- Storage cabinets in upper galley, varnished teak doors

- Storage cabinets and drawers in lower galley, varnished teak doors and faces with stowage for utensils, and other items
- Trash compactor in lower galley with teak face
- All dish wear is custom built into all cabinets

SALON DAY HEAD

- Aft salon starboard side just inside salon cockpit entrance
- Air conditioning/ heat with register in soffit
- Countertop, custom quartz with programmable lighting
- Exhaust fan with vent in soffit
- Flooring, custom Amtico
- Head, Sealand vacuflush
- Lower vanity with curved teak face
- Lights, overhead LED lights in recessed in soffit and ceiling

COMPANIONWAY

- Access to pantry forward of galley and dinette
- Awlgrip bilge areas with access hatches, snow white and lighted for easier maintenance and cleaning
- Central vacuum unit connection with accessories
- Flooring, carpeted steps from galley through companionway
- Laundry center with stackable washer and dryer behind teak door
- Lighting, overhead LED lights recessed in headliner
- Staircase with banister along starboard companionway side
- Vertical teak strips in companionway
- Wall panels, natural style vinyl headliner individually installed with Velcro backing for easy maintenance

MASTER STATEROOM

- Air conditioning with reverse cycle heat that circulates from concealed registers behind the valances to maximize comfort while minimizing noise and drafts - individual temperature control
- Bed, king-size, walk-around fore and aft with upgraded, pillow top, Handcraft innerspring mattress
- Bedspread – quilted, designer style with pillow shams (2)
- Closets, twin maple-lined hanging closets with teak doors
- Credenza forward of king-size bed with drawer storage
- Decorative indirect rope lighting from underneath bed platform and behind valances
- Drawer storage under bed, (2) large drawers
- End tables at port and starboard ends of bed with drawer and door storage
- Entertainment center, FM/DVD surround sound system with subwoofer
- Flooring, carpet
- Headboard, upholstered
- Lighting, overhead LED on lights recessed in headliner
- Lounge, L-shaped on starboard side with removable cushions for storage
- Port and starboard port lights
- Port and starboard side credenza with drawer storage
- Reading lights, overhead with separate switches
- Sheets
- Telephone outlet
- TV, 46" HD flat screen
- Vanity/desk area with stool
- Custom lighting in tray ceiling
- Custom sconces

- Custom blue-color rope lighting around bed
- Private head access
- Sound down installation on aft bulkhead wall between the bed and engine room
- Rite Aire dehumidifier illuminates 40% of the humidity

MASTER STATEROOM HEAD

- Air conditioning/heat with register in soffit
- Countertop, custom quarts with programmable lighting
- Exhaust fan with vent in soffit
- Flooring, custom Amtico
- Head system, Sealand vacuflush
- Linen storage
- Lower vanity with curved teak face
- Lighting, overhead LED lights recessed in soffit and in ceiling
- Medicine cabinet with mirrored doors
- Mirror around upper vanity insert
- One-piece custom frameless shower door in master head
- Receptacle, 120V - GFCI
- Shower light
- Sink – biscuit with satin nickel faucet
- Stall shower, fiberglass with satin nickel shower fixtures
- Storage cabinet with shelves and mirrored door in master head
- Towel bar and ring – satin nickel

GUEST STATEROOM (FORWARD/PORT)

- Air conditioning/heat with temperature control

- Bed, queen-size walk-around bed with Handcraft innerspring mattress and lift up top with gas pistons and cedar-lined storage underneath
- Bedspread – quilted, designer style with pillow shams (2)
- Central vacuum unit connection with accessories
- Decorative indirect rope lighting from underneath bed platform and behind valances
- Flooring, carpet
- Hanging locker, teak, maple-lined
- Head private access in both staterooms
- Lighting, overhead LED lights recessed in headliner
- Mattress, orthopedic upgrade
- Reading lights with separate switches
- Sheets
- Stereo speakers recessed tied into salon stereo with remote control
- Storage cabinets, port and starboard sides of bed, teak
- Storage drawers under bed, (2) large drawers
- Teak shelf
- TV, 32” HD flat screen

FORWARD STATEROOM HEAD

- Air conditioning/heat with register in soffit
- Countertop, custom quartz with programmable lighting
- Exhaust fan with vent in soffit
- Flooring, custom Amtico
- Head system, Sealand vacuflush
- Linen storage
- Lower vanity with curved teak face

- Lighting, overhead LED lights recessed in soffit and in ceiling
- Medicine cabinet with mirrored doors
- Mirror around upper vanity insert
- One-piece custom frameless shower door in master head
- Receptacle, 120V - GFCI
- Shower light
- Sink – biscuit with satin nickel faucet
- Stall shower, fiberglass with satin nickel shower fixtures
- Storage cabinet with shelves and mirrored door in master head
- Towel bar and ring – satin nickel

PORT STATEROOM

- Queen sized, walk-around bed
- Private head access
- Maple lined hanging locker
- Air conditioning/heat with temperature control
- Bedspread – quilted, designer style with pillow shams
- Flooring, carpet
- Hanging locker, maple-lined with bar for hanging clothes
- Lighting, overhead LED lights
- Mattress, Handcraft innerspring
- Sheets
- Stereo speakers recessed tied into salon stereo with remote control
- Storage drawers located under hanging locker

PORT STATEROOM HEAD

- Air conditioning/heat with register in soffit
- Countertop, custom quartz with programmable lighting
- Exhaust fan with vent in soffit
- Flooring, custom Amtico
- Head system, Sealand vacuflush
- Linen storage
- Lower vanity with curved teak face
- Lighting, overhead LED lights recessed in soffit and in ceiling
- Medicine cabinet with mirrored doors
- Mirror around upper vanity insert
- One-piece custom frameless shower door in master head
- Receptacle, 120V - GFCI
- Shower light
- Sink – biscuit with satin nickel faucet
- Stall shower, fiberglass with satin nickel shower fixtures
- Storage cabinet with shelves and mirrored door in master head
- Towel bar and ring – satin nickel

STARBOARD STATEROOM

- Bed, guest stateroom, side by side berths with lift up bunk top for storage
- Private head access
- Maple lined hanging locker
- Air conditioning/heat with temperature control
- Flooring, carpet
- Hanging locker, maple-lined with bar for hanging clothes
- Head private access in both staterooms

- Lighting, overhead LED lights
- Mattress, Handcraft innerspring
- Sheets
- Stereo speakers recessed tied into salon stereo with remote control
- Storage drawers located under hanging locker

STARBOARD STATEROOM HEAD

- Air conditioning/heat with register in soffit
- Countertop, custom quartz with programmable lighting
- Exhaust fan with vent in soffit
- Flooring, custom Amtico
- Head system, Sealand vacuflush
- Linen storage
- Lower vanity with curved teak face
- Lighting, overhead LED lights recessed in soffit and in ceiling
- Medicine cabinet with mirrored doors
- Mirror around upper vanity insert
- One-piece custom frameless shower door in master head
- Receptacle, 120V - GFCI
- Shower light
- Sink – biscuit with satin nickel faucet
- Stall shower, fiberglass with satin nickel shower fixtures
- Storage cabinet with shelves and mirrored door in master head
- Towel bar and ring – satin nickel

CREW STATEROOM

- Air conditioning/heat with temperature control
- Bed, crew stateroom, upper and lower berths – lift up lower bunk top with maple-lined storage underneath
- Bedspread – quilted, designer style with pillow shams (2)
- Flooring, carpet
- Hanging locker, maple-lined with bar for hanging clothes
- Head private access in both staterooms
- Lighting, overhead LED lights
- Mattress, Handcraft innerspring
- Sheets
- Stereo speakers recessed tied into salon stereo with remote control
- Storage drawers located under hanging locker

CREW STATEROOM HEAD

- Air conditioning/heat with register in soffit
- Countertop, custom quartz with programmable lighting
- Exhaust fan with vent in soffit
- Flooring, custom Amtico
- Head system, Sealand vacuflush
- Linen storage
- Lower vanity with curved teak face
- Lighting, overhead LED lights recessed in soffit and in ceiling
- Medicine cabinet with mirrored doors
- Mirror around upper vanity insert
- One-piece custom frameless shower door in master head
- Receptacle, 120V - GFCI

- Shower light
- Sink – biscuit with satin nickel faucet
- Stall shower, fiberglass with satin nickel shower fixtures
- Storage cabinet with shelves and mirrored door in master head
- Towel bar and ring – satin nickel

DÉCOR

- Designer bedspreads for all beds
- Designer shams (2) per stateroom (3 for VIP forward layout)
- Designer fabrics
- Fabrica carpet, nylon fibers with Scotchgard protection and stain release
- Hunter Douglas blinds
- Passage doors, teak style and rail

COCKPIT

- Cable TV and telephone connections in cabinet under starboard forward gunwale and wired to a home run
- RG6 TV cable to accommodate satellite system
- Phone cable is two-pair to accommodate current data phone systems
- Cabinet with storage for gaffs and or other accessories under port and starboard gunwale
- Dockside electric connection – (2) 100 amp/220V electric retractable
- Dockside water connection with pressure reducing valve in cabinet under gunwale
- Drop-in in deck storage boxes; (2) on port side for optional live well and storage box (1) fishbox starboard
- Electric, sliding salon door – molded fiberglass with frameless window and teak interior
- Engine room access with door and with nonskid steps to engine room

- Extended flybridge overhang for shade
- Freshwater wash down with hose bib located in cabinet under gunwale
- Gaskets for all lids and access doors
- Glendinning Cablemasters in forward port and starboard cabinets under gunwales
- Indirect rope LED lighting underneath the coaming
- Ladder to flybridge, one-piece, anodized aluminum with teak treads
- Laminated aluminum mounting plate in deck for fighting chair or table
- Lazarette hatch with access to steering, trim tabs, drain pumps
- Lighting, recessed LED lights in flybridge overhang
- Live well in cockpit sole
- Teak deck and covering boards
- Observation mezzanine with port and starboard aft facing lounge seating with Sunbrella covered cushions, hinged seats with storage under lounge area, tackle cabinet with pull-out drawers and large bait freezer
- Reinforced recessed, stainless steel cleats and hawse pipes
- Recessed in deck fish box, insulated and removable with pump out and drain plate with large holes for easy pump out and cleaning
- Recessed refrigerated chill box under mounted in mezzanine step for direct access from cockpit
- Rod holders, (4) Rupp flush mounted
- Rounded cockpit teak coaming for comfort
- Seawater wash down
- Self bailing cockpit with large scuppers
- Split lids for fishboxes
- Stainless steel gas springs on all hatches and lids
- Stereo speakers tied into salon stereo with remote control
- Storage locker with shelf and push release door molded in at starboard and port side of salon steps

- Straps with padding to secure engine room door and transom door and gate when open
- Transom swim steps at transom door
- Transom mounted fishbox with drain
- Valve to fill freshwater tank from dockside inlet
- Walk-through transom door with lift gate
- Y-valve fresh and salt water wash down
- Release Marine custom fighting chair
- AC on cockpit Mezzanine
- Transom has custom faux teak finish
- (4) 12V outlets

ENCLOSED FLYBRIDGE

- Air conditioning, oversized
- Single Stidd helm chair in center
- Powder coated air horns
- Miya Epoch teaser reels mounted above aft station
- MTU control system
- Single lever controls with bow thrusters in sticks at aft station
- Canvas cover for aft station
- Sub-zero refrigerator drawers on starboard side
- Dedicated batteries for flybridge electronics
- Windshield defroster
- 37" pop-up flat screen TV
- Larger helm steering wheel mounted higher
- Tri-color lights on flybridge overhang
- Inside of flybridge door painted to match headliner

- Custom Amtico flooring at entranceway
- Sofa and companion seats are ultra-leather buckskin
- Central vacuum connection
- Teak cocktail table
- Port and starboard companion seats with storage under
- Custom liquor storage
- Hatch above helm chair
- Interior staircase from salon
- Large under-helm area for storage and electronics
- L-shaped lounge on elevated floor aft with storage under
- Molded fiberglass seat on aft deck
- Octoplex touch screen
- Custom air conditioning for aft seating
- Custom Dewberry style couch with custom rod storage
- Windows treated with V Kool

TOWER

- Tuna Tower, 2-1/2 Bow legs, Brushed Pipe, 10'6" Gap,
- (2) antenna stand-offs
- Center ladder
- Molded standing platform with coupler box on platform
- Molded LED Spreader Light with Stainless Steel Bezel on aft platform
- Molded LED Spreader Light with Stainless Steel Bezel on forward platform
- Control Box 65" Pod Style with (2) recessed electronics boxes
- Tower sunshade molded 84" ring with internal tracks
- (3) welded antenna mounts

- Tower Sunshade Frame Painted Black
- Underside of Platform & Tower Sunshade painted Grey
- Antenna Mount SAT TV Dome molded fiberglass
- Stern light molded into Bridge Overhang
- Anchor light on sunshade & masthead light under control box
- 46' Outriggers Rupp, "Bigg Riggs" 46' 4 spreader bridge release with Heavy Aft Bar
- Outriggers mounted on Enclosed Bridge
- Hydraulic rigger system layout with auto locking stand-offs
- Rupp Center Rigger
- 3-sided Bridge rail, double aft 1-1/2" pipe
- New foil style Polished Rod holders welded to rail
- MTU Controls (pod style single lever) & Steering
- Stainless Steel Single Lever Control Handles with bow thruster control
- Nav lights molded into platform
- Trim tab switch on control box
- Welded corner seats with cushions mounted under belly ring
- Welded corner seat with cushion mounted on aft bridge rail behind helm
- Digital tachs mounted on control box
- Flag staff under each side platform perimeter rail
- Fresh water outlet in tower
- MIYA Epoch US9 HD R 24V Electric Teaser Reel with Remotes
- Stainless Steel Grommets mounted in cockpit gunnels w/ jam cleats
- Bow Thruster Control on control box
- Recessed Tri-Color Lights in Platform
- Recessed Tri-Color Lights in Tower Sunshade
- Fiberglass recess in tower sunshade for electric teaser reels

- (2) Additional MIYA Epoch US9 teaser reels mounted in tower sunshade
- Powder coated aluminum mount for teaser reels
- Upgrade forward spreader light pod with second LED light and hailer recessed in center

ELECTRONICS

Radar

- Garmin 12kw w/6' array
- Garmin black box system, preloaded charts
- Furuno GP330B GPS antenna
- 19" GMM190 TS monitor
- 17" GMM170 TS monitor
- Garmin Antenna GPS19X
- Garmin Series card reader

Plotter

- Garmin GPSMAP8530 Black box system, preloaded charts
- Furuno GP330B GPS antenna
- 19" GMM190 TS monitor
- 17" GMM170 TS monitor

Plotter 2

- KEP Navigation PC
- Nobletec TZ Trident with radar and sounder options
- WxWorkx WR10 ethernet bundle receiver
- WxWorkx power cable
- KEP 50mm black trackball
- GO wireless 2.4 mouse and keyboard combo
- USB Xmit extender

- USB RX extender

Network

- Garmin expander
- Garmin network cable
- Garmin WIFI Adapter for bluechart mobile
- Garmin Transducer and sounder
- 19" GMM190 TS monitor
- Furuno RD33 Display & Data organizer digital depth
- GarminGHP20 Viper autopilot

VHF

- (2) ICOM IC-M604 black
- Expanded channels on all VHF radios
- (2) ICOM flush mount kits
- (2) Shakespeare phase III 18' VHF antennas
- Antenna mount Rupp AME Tower/Hardtop
- Antenna standoff $\frac{3}{4}$ pipe
- ICOM HM-162 command mic mounted inside salon door
- ICOM VHF extension command mic
- (2) $\frac{3}{4}$ " pipe antenna stand-offs
- 5" SPC-5P hailer horn mounted flush under standing platform
- ICOM IC-M604 black mounted in pantry
- Shakespeare 4' VHF antenna for pantry radio
- (2) ICOM HM-162 command mic mounted in salon and cockpit
- (6) VHF extension command mic ICOM OPC-1541

Stereo

- Shakespeare phase III 6420 AM/FM antenna

- Fusion MS-IP700 12V stereo
- Salon music server connected to auxiliary input
- Fusion MS-IP700 wired remote in engine room
- Fusion MS-IP700 wired remote in cockpit
- Fusion MS-IP700 wired remote in aft station
- (4) Fusion connector kits
- Fusion MS-ACSX tuner for Sirius/XM
- Sirius XM satellite radio splitter
- JL Audio MHD600 4-channel amplifier
- JL Audio M600/1 subwoofer amplifier
- JL Audio 7.7" component speaker in haunch
- (2) JL Audio MB10IB5-4-W 10" Subwoofer in cockpit haunch
- Factory speakers re-located to engine room
- JL Audio M600/6 amplifier

Satellite Communications

- KVH V7 Tracphone Satellite phone
- 28" round molded satellite antenna pod
- 24 port Ethernet switch
- D-Link DIR-615 router
- Panasonic KX0-TGA4500B 4-line 5.8 GH cordless phone handsets in salon, master, and FB
- HP 650 all-in-one Photosmart printer/fax/copier
- RJ45 PC switch to toggle between SAT and cell
- Boatranet application server- allows on board data/manuals to be viewed wirelessly
- USB Gateway NMEA2000 maretron plotter

Spotlight

- (2) 24VDC with twin 35W HID lights mounted on port and starboard of hardtop

Satellite TV

- KVH Tracvision HD7
- HD7 Tri-Americas LNB
- KVH 16 tuner expansion kit
- (2) DirecTV HR24 HD/DVR DSS receivers in master and salon
- (6) DirecTV Hi-Def H24 DSS receivers
- (2) 750VA APC UPS back-ups- keeps power to LNB's when switching to and from gens
- Satellite TV remote control kit for KVH HDTV
- 3 x 4 Eagle Aspen multiswitch with power supply

Salon Audio/Visual

- AV MARANTZ SR5006 Receiver
- URC DMS-100 zone amplifier
- 4-Channel CP5545 modulator
- (3) digital audio to analog converter
- Keleidescape K Server 5000-045 3U server, Blu-ray, DVD, MUSIC
- Keleidescape MX700 disc vault with m-class player
- (5) CM75D speakers in ceiling
- Sunfire super junior 1,500 watt, 9.5" cubed 108 db output subwoofer
- 15' HDMI cable
- iPod dock with remote control
- 2-Way RF URC MSC400 programmed remote control
- RF remote system
- AV thermal management cooling fan
- Cyberpower PR2200S rack mount UPS
- (3) 8" cross flow fan stinger
- Cool IQ rack mount cooling fan

- 3 x 2 matrix switch
- VGA CAT5 receiver
- Extron 60 VGA over CAT 5 receiver
- Extron VGA over CAT 5 transmitter
- Sennheiser RS160 wireless headphones with transmitter
- Sony Wii
- HDMI jack mounted in dinette for laptop
- Additional AV jack
- SRH2000 Sirius radio tuner
- Sliding rack system for all mounted AV equipment
- Snap AV HDMI over CAT 5 extender
- Cyber power rack MT UPS

Master Stateroom

- AV MARANTZ SR5006 Receiver
- Custom Leon 212 LCR soundbar mounted below TV
- Sonance VP45 in ceiling speakers painted to match headliner
- Sunfire super junior 1,500 watt, 9.5" cubed 108 db output subwoofer
- Kaleidescape M300A K-Player
- 15' HDMI cable
- iPod dock
- 2-Way RF MX6000 custom programmed remote
- Temperature controlled cooling fan
- APC 650VA UPS
- (2) wireless headphones with transmitter
- APC 750VA UPS backup

Audio/Visual 3

- Kaleidescape M300A K-Player
- MX-5000 URC remote control
- MRX-1 remote control base station
- Additional antenna for MRX-1 remote control
- 25' HDMI cable
- URC DMS-100 zone amplifier
- 26" LG TV
- APC 750VA UPS backup
- iPod dock

Audio/Visual 4

- (3) URC MX-980 remote controls for port forward, port aft, and starboard staterooms
- 22" LG TV for port forward stateroom
- 22" LG TV for port aft stateroom
- 22" LG TV for starboard stateroom
- 22" LG TV for pantry/ stateroom
- (3) MRF-260 RF receivers
- (6) 25' HDMI cables
- HDMI over coax audio authority HXE-11
- (3) URC DMS-100 zone amplifier
- (3) iPod docks

Enclosed Flybridge Audio Visual

- AV MARANTZ SR5006 Receiver
- Custom Leon 212 LCR soundbar mounted below TV
- (2) Niles CM75D FGO1665 speakers in ceiling
- Sunfire super junior 1,500 watt, 9.5" cubed 108 db output subwoofer
- Kaleidescape M300A K-Player

- iPod dock
- MX-5000 URC remote control
- URC MSC400 RF remote system
- Temperature controlled cooling fan
- APC 750VA UPS backup
- 10' HDMI to DVI cable to distribute SAT TV to (5) helm displays
- Altone 8-port splitter to split Flybridge SAT TV HDMI output to feed helm displays

Alarm

- Magellan AME package alarm system with security and tracking
- (5) Magellan MG-DCT2 wireless ultra-small alarm door contacts
- Magellan MGSS30 2-tone siren
- I2 Systems relay for 2WPGM Paradox

Safety

- Kannad K1202367 Safelink auto GPS EPIRB

Aft Station

- Garmin GPSMAP 12" preloaded with coastal charts
- Garmin autopilot control unit
- (2) ICOM HM-162 VHF command mics

Tower

- Garmin GPS 12."
- (2) ICOM HM-162 VHF command mic
- Simrad AP24 autopilot control unit
- Audiotech AT889CW headset with noise canceling
- Audiotech 3110B wireless mic
- Amplivox S805A multi-media stereo amplifier
- Newmar PA-30/20 hailer horn mounted under standing platform

Cockpit

- Garmin 19" monitor- able to view Salon DSS, NavNet 3D, Cam PC, Thermal and low-light cams
- Custom mounting plate for monitor
- (2) 12V Marinco 12VBR outlets for electric reels
- Custom Teak cup holders

DECK/EXTERIOR

- Freshwater washdown at bow inside anchor locker
- Side mounted hand rails that follow top of salon window
- Stainless steel gas springs for anchor locker hatch
- Deck fill for fresh water tank
- Hydraulic windlass
- Forward window mask
- Custom removable extended SS anchor fair lead
- Custom faux teak tow rail and transom

CONSTRUCTION

- Viking high performance package with VC offshore bottom paint
- Awlgrip brass thru hulls and sea strainers
- Awlgrip engine room, lazarette, forward bilge and anchor locker for enhanced visibility and easier maintenance
- Blister resistant modified epoxy resin in entire hull skin
- Custom blended polyester resin used in structural laminates, topsides, bridges, and hardtops
- Dupont high gloss polyurethane boot stripe
- Fiberglass holding tank with dockside and overboard pump out

- Fiberglass side thru-hulls
- Hatches, one (1) Bomar, foredeck hatches, with Ocean Air screen shade system
- High gloss teak interior finish throughout
- High performance isophthalic gelcoat superior gloss, flexibility and outstanding weathering characteristics
- Hull interior – isophthalic gelcoat top-coated with a durable high gloss polyurethane coating
- Hull bottom – vacuum bagged end-grain balsa core sandwiched with fiberglass laminates
- Infused fiberglass fuel and holding tanks, with fiberglass baffles inside and balsa coring on sides for stiffness, sealed to hull with resin foam
- Laminated end-grain balsa core in hull sides and topsides
- Molded fiberglass salon floor/engine room ceiling with foam core for acoustical and thermal insulation
- Propeller pockets to reduce draft
- Stringers, fiberglass encapsulated foam
- Transducer location molded into keel
- Vacuum bagged composite bulkheads – Main engine room bulkhead, intermediate engine room bulkheads, and forward bulkhead

ELECTRICAL

- 24V DC ship's service throughout
- 240/120V AC power supply
- 110V outlet in engine room on aft bulkhead
- Anchor light/navigation lights
- Batteries, (3) independent 24V banks mounted in fiberglass storage boxes, maintenance free
- Battery chargers, (3) with thermal cutoff and switching system for complete integration
- Battery distribution panel with battery cutoff and charging system breakers
- Battery parallel system for main engines and generator start

- Bonded electrical system with ground plate
- Charles PM 100, shore power cord combiner, 200 amps
- Color-coded, labeled and numbered wiring system with corresponding drawings
- Dimmers, DC interior LED= lighting throughout excluding the companionway

MECHANICAL

- Air conditioning – chilled water, 12 tons (three 6 ton units), zoned with reverse cycle heat for complete climate control throughout the interior and with individual temperature controls for staterooms and salon
- Bow thruster hydraulic with controls in single lever handles on open flybridge or joy stick on enclosed flybridge
- Bilge pumps with clean out pumps in keel area linked into monitoring system and connected to float switches for automatic and manual operation
- Centralized seawater system
- “Delta T” engine room ventilation system with thermostatically controlled supply and discharge fans for proper fresh air circulation and water intrusion suppression
- “Delta T” pneumatically controlled engine room ventilation dampers, integrated into fire suppression system
- Dual stage variable speed 110V AC freshwater system with on deck freshwater fill and cockpit dockside supply inlet with pressure reducing valve
- Engine room entrance and remote mounted engine start and stop switches for easier accessibility
- Fire suppression system, automatically and manually operated and tied into main engine and generator ignition systems with override
- Freshwater filter – paper
- Freshwater supply in engine room for general maintenance and cleaning
- Fuel and oil lines, flexible, steel reinforced USCG approved, aircraft type
- Fuel priming pumps for main engines, electric
- Fuel transfer and management system, 220V AC pump w/24V DC backup pump controlled through Moritz control panels

- Hour meters on main engines and generator
- Hydraulic bilge pump with manifold to forward, engine room, and cockpit bilges
- Integrated engine mounting system for efficient transfer of energy to drive train system
- Internal sea strainers for generator, and all other seawater pick ups
- Mufflers – generators, underwater gas/water separators
- Oil changing system, gear type pump for main engines, transmissions, and generator with pump out line run to cockpit locker
- PEX plumbing, freshwater system with manifold system to isolate individual areas
- Prep for future installation of Seakeeper
- Propellers, class “S” pitch tolerance (ISO 484/2 and dynamic balancing), advance design cambered blade sections for optimum performance. Nibral alloy for maximum durability
- Racor fuel/water separator filters for main engines and generator, “dual” filters for main engines, clear bowl type, top loading for convenient replacing – Awgrip snow white
- Rudders, stainless steel, composite rudder bearing with dripless seal laminated into hull
- Seacocks, bronze, ball-type sea valves for all thru-hulls below the water line - Awlgrip white
- Shafts – 2 Aquamet high-strength stainless steel, double-taper with machined keyway and custom thrust plate at main engine couplings
- Struts – thru-water, Nibral with composite bearings
- Tides Marine water lubricated dripless shaft seals with crossover water supply from both engines
- Trim tabs, with center, port and starboard tabs recessed in transom, individual controls with fiberglass covers
- Underwater exhaust reduces engine exhaust back pressure. Cleaner exhaust discharge and improved utilization of area under the cockpit
- VIPER - (Viking Independent Programmable Electrohydraulic Rudder) steering system with electronic interface located under the helm for additional stations and future Auto Pilot
- Water heater – 40 gallons, dual element for quick recovery, electric

ENGINE ROOM

- Upgraded MTU 16V-2000; M94 2,600hp 450 Hrs with extended warranties until July 2019
- (2) 32kw Onan QD diesel generators
- Two, 4-drawer, 16" wide tool boxes painted white
- All brass thru-hulls and sea strainers painted with Awlgrip
- Fuel filter painted snow white
- All pumps painted snow white
- Line run from oil change system to cockpit dockside box
- 110v outlet on aft bulkhead
- 1,400 GPD watermaker with auto backflush
- Dockside water hook up for watermaker with extra large filters
- (3) 6-ton chilled water air conditioners with reverse cycle heat
- Clear acrylic shaft log access covers
- Generator fuel water separator for both generators
- Charles autophase c-power shore power transformer
- Back-up pump for sea water system plumbed in parallel
- Dedicated freshwater pump for all exterior washdowns
- Brownie dive compressor
- 100' hose reel for dive compressor
- Bilge pumps with clean out pumps in keel linked to monitoring system
- "Delta T" ventilation system
- "Delta T" pneumatically controlled ventilation dampers tied to fire suppression
- Dual stage variable speed 110v fresh water system
- AC and DC lighting
- Fuel priming pumps for main engines
- Fuel transfer management system
- Oil change system with line run to cockpit box

- 40 gallon, dual element hot water heater
- Stereo speakers connected to Fusion stereo
- Additional sound down installation
- Gyro stabilizer by Seakeeper (model 9)

Исключения

При продаже яхты исключаются личные вещи владельца.

Отказ от ответственности

Компания предоставляет описание судна или яхты добросовестно, но не может гарантировать точность этой информации, а также не ручается за техническое состояние. Покупатель должен проинструктировать своих агентов или оценщиков исследовать представленную информацию более подробно, по собственному желанию. Продажа судна или яхты, изменение цены или снятие с продажи будет происходить без предварительного уведомления.

ФОТОГРАФИИ

Salon





Day Head

Dinette





Galley



Pantry



Pantry



Laundry



Media



Master Stateroom





Master Head



Forward Stateroom



Forward Head



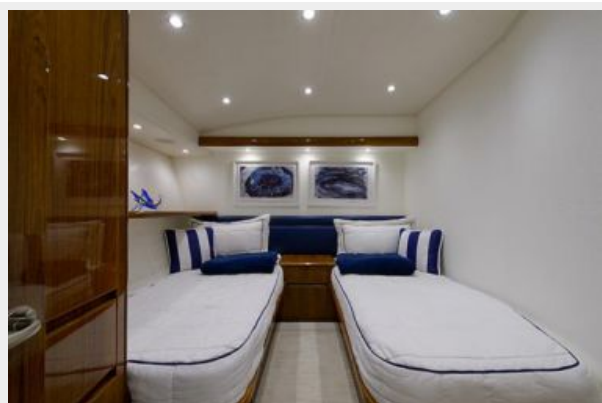
Forward Port Stateroom



Forward Port Head



Starboard Stateroom



Starboard Head



Mid Port Stateroom



Mid Port Head



Enclosed Flybridge



Enclosed Helm







Tower

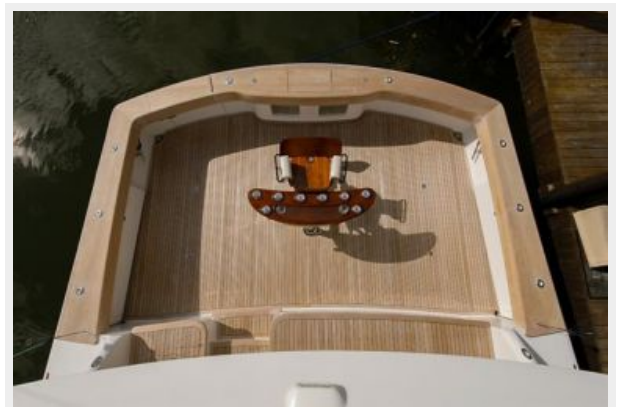




Tower Helm



Cockpit

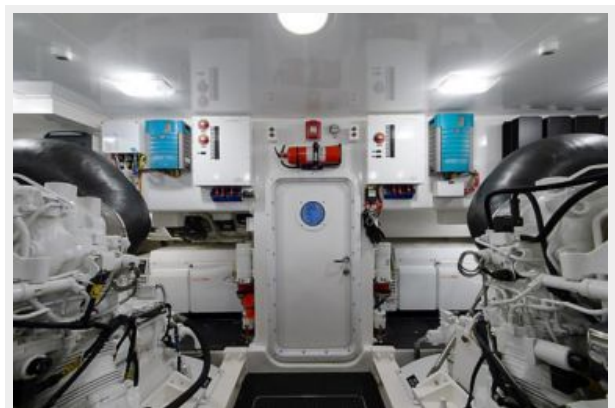






Engine Room









КОНТАКТЫ

Андрей Шестаков (Andrey Shestakov) – ведущий яхтенный брокер отдела продаж яхт и судов компании Shestakov Yacht Sales Inc. Официальный представитель Shestakov Yacht Sales Inc. для русскоговорящих клиентов в центральном офисе компании в Майами/Форт Лодердейл/Флорида/США.

Контактная информация

Email: andrey@shestakovyachtsales.com

Web: shestakovyachtsales.com

Телефоны

Краснодарский край: **+7(918)465-66-44**

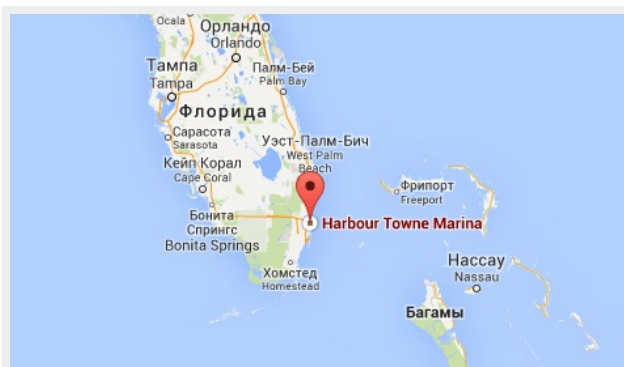
США, Майами, Флорида: **+1(954)274-4435**

Время работы

Понедельник – Суббота: **9:00 - 21:00**
EDT

Воскресенье: **Закрито**

Адрес



Harbour Towne Marina, 850 NE 3rd St,
STE 213, Dania, FL 33004