

SOUTHERN BELLE — OUTER REEF YACHTS



Судостроитель: [OUTER REEF YACHTS](#)

Год постройки: 2013

Модель: Моторная яхта

Цена: **ЦЕНА ЯХТЫ ПО ЗАПРОСУ**

Местонахождение: United States

Длина общая: 72' 0" (21.95m)

Ширина: 18' 6" (5.64m)

Мин. осадка: 5' 0" (1.52m)

Макс. осадка: 5' 0" (1.52m)

Крейс. скорость: 10 Kts. (12 MPH)

Макс. скорость: 13 Kts. (15 MPH)

Купить **Southern Belle — OUTER REEF YACHTS** а также выбрать подходящую вам яхту из нашего каталога яхт вам поможет опытный яхтенный брокер Андрей Шестаков. На сегодняшний день компания **Shestakov Yacht Sales Inc.** имеет большое количество яхт в собственном списке продаж, а также тесно сотрудничает со всеми крупными яхтенными производителями по всему миру.

Для того чтобы купить яхту **Southern Belle — OUTER REEF YACHTS** а также проконсультироваться по любому вопросу связанному с покупкой, продажей, чартером яхт позвоните по телефону **+7(918)465-66-44**.

ОГЛАВЛЕНИЕ

ОГЛАВЛЕНИЕ	2
ХАРАКТЕРИСТИКИ	7
Обзор	7
Основная информация	7
Размеры	7
Скорость, вместимость и масса	8
Размещение	8
Корпус и палуба	8
Информация о двигателе	9
ПОДРОБНОЕ ОПИСАНИЕ	10
WALKTHROUGH	10
FOREDECK	10
PORTUGUESE BRIDGE	11
SIDE DECKS	11
FLYBRIDGE	12
FLYBRIDGE ELECTRONICS	13
BOAT DECK	14
TENDER	15
PILOTHOUSE	16
PILOTHOUSE ELECTRONICS	17
GALLEY	19
DAY HEAD	20
MAIN SALON	21
SALON ENTERTAINMENT	22
AFT DECK	23
SWIM PLATFORM	24
MASTER STATEROOM	24
MASTER STATEROOM ENTERTAINMENT	26

MASTER HEAD ENSUITE	26
MASTER/GUEST STATEROOM FOYER	27
VIP STATEROOM	28
VIP ENTERTAINMENT	29
VIP ENSUITE HEAD	29
PORT GUEST STATEROOM	30
PORT GUEST STATEROOM HEAD	31
STAIRWELL FROM SALON	31
CREW QUARTERS/ENGINE ROOM	31
CAPTAIN'S CABIN	32
CAPTAIN'S HEAD	33
CREW GALLEY	33
ENGINE ROOM	34
ENGINES	35
ELECTRICAL	35
BATTERIES	36
INVERTER	36
SHORE CORDS	36
CHARGERS	37
AIR CONDITIONING	37
OIL CHANGE SYSTEM	37
FUEL POLISHING SYSTEM	38
FIRE SYSTEM	38
BILGE PUMPS	38
WATER MAKER	38
BOW & STERN THRUSTER	38
STABILIZERS	39
FRESHWATER SYSTEM	39
HEAD SYSTEM	39

BREAKER PANELS	40
EXCLUSIONS	40
BROKER'S REMARKS	40
VIRTUAL TOUR	40
Исключения	40
Отказ от ответственности	40
ФОТОГРАФИИ	41
Dockside	41
Southern Belle	41
Windlass	41
Foredeck	41
Side Decks	42
Mast	42
Flybridge Helm Station	42
Flybridge Facing Forward	42
Flybridge Helm Seating	42
Flybridge Port Side Lounge	42
Flybridge Casual Dining Port Side	43
Flybridge Casual Dining Starboard Side	43
Boat Deck Storage	43
Boat Deck Wet Bar and Grill	43
Boat Deck	43
Boat Deck	43
Tender Seating	44
Tender Helm	44
Tender Forward Seating	44
Aft Deck	44
Aft Deck Dining	45
Aft Deck	45

Pilothouse	45
Pilothouse	45
Pilothouse Dining and Stairwell to Flybridge	45
Pilothouse Custom Bulkhead	45
Galley	46
Galley	46
Galley	46
Day Head	46
Starboard Side Main Salon	46
Main Salon	46
Main Salon "L"-Settee	47
Main Salon TV	47
Master Stateroom	47
Salon Entertainment	47
Master Stateroom	47
Master Stateroom	47
Master Stateroom Entertainment	48
Master Ensuite Head	48
VIP Stateroom	48
VIP Stateroom	48
VIP Ensuite Head	48
Port Guest Stateroom	48
Port Guest Ensuite Head	49
Crew Work Desk	49
Crew Quarters Freezer	49
Crew Galley	49
Captain's Cabin	49
Crew Head	49
Engine Room	50

Port Engine - CAT C-9	50
Engine Room Work Bench	50
Starboard Engine - CAT C-9	50
Engine Room Tool Box	50
КОНТАКТЫ	51
Контактная информация	51
Телефоны	51
Время работы	51
Адрес	51

ХАРАКТЕРИСТИКИ

Обзор

"Southern Belle" is perhaps the finest example of this premier long-range yacht builder. Custom built for her original and present owner, combined with his +40 years of boating and having owned yachts over 100', "Southern Belle" clearly reflects this in her systems, electronics and having been kept in pristine condition. If you desire the best and if now is the time to fulfill a life-long dream without new construction wait and all warranty issues addressed, "Southern Belle" is a prudent choice for a knowledgeable, perfectionist yacht owner. A must see if you want the best and ready to go cruising now.

Основная информация

Тип судна: Моторная яхта

Подкатегория: Long Range Cruiser

Модельный год: 2013

Год постройки: 2013

Страна: United States

Верх: Hardtop

Открытая палуба мостика: Да

Размеры

Длина общая: 72' 0" (21.95m)

Ширина: 18' 6" (5.64m)

Мин. осадка: 5' 0" (1.52m)

Макс. осадка: 5' 0" (1.52m)

Скорость, вместимость и масса

Крейс. скорость: 10 Kts. (12 MPH)

Крейсерская скорость поворота: 1800 Kts.

Дальность на крейсерской скорости: 2400

Макс. скорость: 13 Kts. (15 MPH)

Макс. скорость поворота: 2500 Kts.

Чистый вес: 51 Pounds

Вместимость воды: 400 Gallons

Вместимость сточного бака: 200 Gallons **Объем топливного бака:** 2000 Gallons

Размещение

Всего кают: 3

Спальные места: 6

Всего ком. состава: 5

Каюта капитана: Да

Каюты экипажа: 1

Койки экипажа: 1

Спальных мест экипажа: 3

Корпус и палуба

Материал корпуса: Fiberglass

Материал палубы: Fiberglass

Комплектация корпуса: Full Displacement

Цвет корпуса: White

Отделка корпуса: Stainless Steel

Дизайнер экстерьера: Outer Reef

Дизайнер интерьера: Outer Reef

Информация о двигателе

Двигатели: 2

Производитель: Caterpillar

Модель: C-9

Тип двигателя: Inboard

Тип топлива: Diesel

ПОДРОБНОЕ ОПИСАНИЕ

WALKTHROUGH

Boarding from the port or starboard aft deck or at Pilothouse. Full walkaround decks with cabin top overhangs and safe, high bulwarks. Aft deck with port and starboard access to swim-platform and crew quarters/engine room through transom door. Entrance to Main Salon through glass sliding door off Aft Deck.

Unique access from Main Salon to crew/engine room stairwell. Forward and up two (2) steps to open to Main Salon, Galley. To starboard, opposite Galley, on-deck day head. Forward to Pilothouse with full instrument helm, raised settee with dining table, port and starboard Pilothouse doors to Foredeck/Side Decks. Stairwell to Flybridge with EZ2CY enclosure and air conditioning. Aft of Flybridge, tender and ample storage lockers. Back to Pilothouse stairwell, forward to starboard to Owner's/Guest Quarters three (3) staterooms with ensuite heads, foyer with washer and dryer. Interior paneling is traditional satin finished teak paneling decorated in neutral soft goods tastefully accented with subtle granite stone counter tops.

FOREDECK

- Raised Bulwarks
- Stainless steel bow rail, 29"
- Teak bow flag staff (removable)
- Deck fiberglass, non-skid, upgraded to gray colored non-skid, **UPGRADE**
- Recessed flush deck lockers either side of anchor platform
- Hatch escape/ventilation 27"x 27" stainless steel with skylight
- Fender holder stainless steel triple 15"x30" fenders, **UPGRADE**
- Anchor windlass, Maxwell 4000, hydraulic vertical with Wildcat foot controls and plug-in hand control for windlass
- Flybridge and lower helm remote controls for windlass
- Upgraded chain to 350'x1/2" from 300'x3/8", **UPGRADE**
- Anchor 132lb. CQR plow anchor stainless steel with swivel shackle, **UPGRADE**
- Chain stopper, **UPGRADE**
- 10" Stainless steel cleat for Chain tensioner, **UPGRADE**

- Stainless steel anchor bow breast/strike plate, **UPGRADE**
- Fresh and salt water washdowns
- LED courtesy deck lights
- Deck drains plumbed to waterline
- Washdown system raw water and anchor chain washing, **UPGRADE**
- Anchor chain washing/Fresh water with 24V pump
- (2) 50 AMP inlets w/ (2) 50' manual shore cords

Anchor chain washing/Fresh water with 24V pump

PORTUGUESE BRIDGE

- Storage lockers in aft of Portuguese Bridge
- Raised bulwarks 35" with stainless steel grab rail on top of bulwarks
- Hinged door to Foredeck access
- Pilothouse windows 1/2" tempered glass frameless style
- LED courtesy deck lights
- Windshield cover/black textaline
- Electric Glendinning hose reel 75'x5/8" with shut-off valve, **UPGRADE**
- Port and starboard boarding gates, **(Note)** gates swing inward

SIDE DECKS

- 18"-wide walkways, with overhangs
- Gray non-skid deck, **UPGRADE**
- Port and starboard water-tight Pilothouse doors with dog downs
- Bulwarks 31"-high, with stainless steel mooring line chocks
- Starboard-side fresh water tank deck fill

- Starboard-side holding tank deck pump-out fitting
- LED deck courtesy lights
- Starboard-side dual fuel fills recessed in house side
- Port-side single fuel fill recessed in house side
- Port and starboard cabin side overhangs with LED courtesy lights
- Cabin windows 3/8" tempered glass frameless style
- Engine room air intakes, port and starboard, Main Salon cabin sides
- Recessed life ring holder with 20" life ring starboard cabin side, **UPGRADE**

FLYBRIDGE

- Headroom 6' 8"
- Hardtop Fiberglass with non-skid surface
- Overhead non-reflective finish
- Overhead, LED lights on dimmer switch, **UPGRADE**
- (4) Side polycarbon enclosure with overhead hold up snaps at U-zips, **UPGRADE**
- Working lights for boat deck, (2) halogen
- Venturi style windshield with stainless steel grab rail
- Ladder stainless steel removable from boat deck to hardtop, **UPGRADE**
- Mast to hinge to reduce air draft, **UPGRADE**
- Air draft antennas up 30' 5"
- Air draft mast up 29' 3"
- Air draft mast down 21' 3"
- Deck fiberglass non-skid with upgraded gray non-skid, **UPGRADE**
- Hardtop support beams polished stainless steel
- Helm on centerline, with custom molded electronics console with cover, **UPGRADE**
Extended to accommodate electronics

- Sliding hatch with viewing window at stairwell from Pilothouse
- Port and starboard deck drains exit at waterline
- Under-helm access to electronics, air-conditioning units, storage cabinets with ventilated doors
- Under-helm dive tank holders (3)
- Under-helm rod holders (4)
- Air-conditioning (2) 18,000 BTU units
- Digital air conditioning thermostat with water proof cover
- Air conditioning ducts with weather covers
- Raised cabinet with chaise lounge cushion and adjustable back rest, portside with cover, **UPGRADE**
- Raised cabinet with storage and drawers below
- “L”-settee port-side, with storage below, cushions and cover
- Table, with stainless steel base, in-out slide, port settee, with cover
- “L”-settee starboard with storage below cushions and cover
- Table, with stainless steel base, with in-out slide, starboard settee
- Port and starboard tables fiberglass tops with covers
- Helm and companion seats with arm and foot rests, with covers (Stidd)
- Helm and companion seats with high-low, fore-aft slide, adjustable backrest
- Helm wheel/destroyer style stainless steel, 30”
- 110V outlet with GFI and waterproof cover
- 12V receptacle plug-in

FLYBRIDGE ELECTRONICS

- (2) Chartplotters, Garmin 7215 GPS Map, 15” Display screens
- KEP 15” display screen for CCTV fixed cameras and TV

- VHF with remote hand mic (ICOM IC-M604)
- Night vision camera (Flir), with cover
- Compass, magnetic (Ritchie 5")
- Autopilot (Garmin GHC-10), with cover
- Horns (Kahlenberg), dual trumpet, air with compressor
- Stabilizer, on/off switch
- Searchlight (Carlise and Finch), 12"/230V halogen chrome, **UPGRADE**
- Bow and stern thruster controls
- Caterpillar electronic engine monitors
- Main engine start/stops
- Rudder angle indicator (VDO), **UPGRADE**
- VHF backup unit (ICOM HM162B)
- Multi-media stereo, AM/FM/iPod-iPhone dock (Fusion Sirius XM), with (2) speakers
- Anchor up/down remote switch
- Clutch and throttles with synchronizer (Glendinning)
- EPIRB/ACR
- Radar (1) 72nm with 4' open array antenna (Garmin 2012)
- Radar (1) 72nm with 6' open array antenna (Garmin 1206xHD)
- AIS
- TV stand movable for 28" (Samsung) flat screen TV, **UPGRADE**
- **(Note)** (3) Movable TV stands Pilothouse/Bridge/Aft Deck

BOAT DECK

- Non-skid deck, gray non-skid, **UPGRADE**
- Stainless steel railings with raised bulwarks 36" in height

- Access to Boat Deck from Aft Deck staircase
- (2) 10" Stainless steel rod holders
- Port and starboard, fore and aft, deck drains
- Sea Stair deck storage brackets
- Access hatch stainless steel frame with viewing window and lift gas shocks
- Davit, 1700lbs, hydraulic boom, rotation, 12' extension (SeaStar)
- Wireless remote for davit, **UPGRADE**
- (2) 6-man canister life rafts with covers, **UPGRADE**
- Life raft rail modification to cradle rafts, port and stbd., **UPGRADE**
- Gas grill (SeaStar) 30" stainless steel with stainless wind-guard, **UPGRADE**
- (2) 20lb LPG tanks with regulator hoses and solenoid control panels
- Grill cabinet, with storage below, recessed sink, with cabinet lid
- Storage cabinet to starboard with under counter U-line refrigerator
- Bulwark, port and stbd., storage cabinets
- Deck freezer (GE), 21"L x 28"W x 34"H, with cover, **UPGRADE**

TENDER

- 15' 2014 AB DLX with 70HP Yamaha fourstroke
- VHF, ICOM IC-M412, with 4' antenna
- Multimedia stereo, AM/FM/iPod-iPhone docking station/Satellite, Fusion, with (2) speakers
- Chart/GPS, Garmin, echo map 50's
- Nav lights
- Yamaha fuel, speed, trip gauges
- Yamaha tachs
- Cold water shower with fresh water pump

- Bilge pump, auto/manual
- Flip up drink holder
- Battery charger with battery switch
- Fuel/water separator filter, canister style
- Battery, with box
- Built-in ice chest with drain
- (3) 5" stainless steel pop-up cleats
- 12V plug-in
- Port and starboard stainless steel grab rails
- Steering wheel, 12", stainless steel
- Cable-style, deck tie downs
- Removable deck chocks
- Tender storage cover, stamoid white
- **(Note)** tender on centerline, fore and aft for ease of maintenance and launching

PILOTHOUSE

- Headroom 6' 10"
- Centerline Helm, with helm seat (Stidd), with stainless steel base
- Chart-drawer
- Digital air conditioning control
- Overhead with LED lighting
- High-gloss beam ceiling
- Satin finished teak cabinetry with high gloss bullnoses
- Port and starboard Pilothouse doors with dog-down-clamps and phantom retractable screens

- 12V/24V DC electrical panel with lighted circuit breaker
- Matching cabinet door on breaker panel
- Access doors for under helm/electronics servicing
- Raised “L”-settee with storage below and dining table with dust cover and concealed gun locker
- Pilothouse aft bulkhead, with art work recess panel, with LED down art-lights
- TV, removable, 28” (Samsung) flat screen with DSS receiver and AppleTV receiver
- DC Electrical panel with transfer switched with cabinet door
- Manual fire system release
- Stairwell to flybridge with bolen-woven non-skid treads and courtesy lights
- Teak and holly sole with bolen-woven non-skid runners
- Stairwell banister with decorative inlay
- (2) custom file drawers under stairwell with locks
- Ample additional storage
- Privacy pocket door between galley and pilothouse
- Forward windshield, with black textaline cover

PILOTHOUSE ELECTRONICS

(Overhead Console)

- Battery voltage monitor – main engines
- Battery voltage monitor – gen sets
- House battery voltage monitor
- Gost Alarm System, alarm on all entry doors, fire, high water bilge
- Tank sentry holding tank, with level gauge (Headhunter)
- Tank tender fuel and water monitor with calibration card

- AM/FM stereo satellite and TV (Fusion)
- VHF, ICOM IC-M604, with hailer w/ handset remote for Bridge VHF
- Fire system monitor, with manual over ride (Fireboy)
- Stabilizer control pad (ABT Trac), digitals, with 7.5 sq.ft. fins, **UPGRADE**

(Lower Console)

- Compass, magnetic (Ritchie), 4.5"
- (3) Chartplotters, Garmin GPSMap 7215, with 15" display screens
- Radar 72mn with 6' antenna 12kW
- Radar 72nm with 4' antenna 4kW
- AIS Garmin send and receive
- Air Mar, with wind speed, direction, with Garmin GMI 10 display
- Depthfinder, color bottom graph, GPS – position, speed, heading
- Depthfinder, backup digital, Garmin GMI 10 with alarm, with speed over bottom, temperature and depth
- Autopilot, Garmin GMI 10 with rudder angle indicator
- Rudder angle indicator (1) VDO
- Weather center in Garmin's (subscription only to activate), Sirius
- CCTV monitor KEP 15" with (2) engine room, (1) mast, (1) aft deck cameras
- Fixed cameras
- Night vision camera, Flir, dual station M series
- Wi-Fi wave system throughout boat
- KEP monitor 15" with satellite TV and DSS receiver
- Dual 110v outlet with iPod/iPhone dock
- Wireless Yacht Controller engines and thrusters hand held remote
- (3) Windshield wipers, Exacto dual speed, with washers, 22" blades
- Anchor windlass remote up/down switch

- Bow and stern thruster controls, hydraulic, ABT track
- Searchlight (Carlisle & Finch), 12" chrome 230V, **UPGRADE**
- Clutch and throttles electric with synchronizer (Glendinning)
- Inverter monitor Xantrex X10 SCP
- Air conditioning remote chiller control (Cruisair)
- (2) Remote generator start/stops with water temperature and oil pressure gauges
- Water maker remote panel
- Engine monitors (Caterpillar), electronic
- Horns, dual trumpet (Kahlenberg), with compressor
- Air draft 29' 3" top of anchor light
- Air draft mast up – 29' 3"
- Air draft mast down – 21' 3"
- Ships monitor system, nav lights, bilge pumps, transom door, macerator pump

GALLEY

- Headroom 6' 9"
- Located aft of pilothouse, forward of Main Salon
- Overhead with high gloss beam ceiling cabinetry
- Overhead with LED lighting
- Teak and holly sole with bolen-woven non-skid runners
- Teak cabinetry satin finished
- Granite counter tops, with under-mount stainless steel double sink garbage disposal
- Faucet single lever with pullout sprayer, chrome (Grohe)
- Ample over and under-counter storage
- Large floor to ceiling pantry with pull-out drawers

- Viewing window at sink with pull-down shade
- Ample 110V outlets with safety GFI breakers
- Microwave built-in over stove, GE monogram stainless steel, convection
- Stove cooktop, (4) burner induction, GE monogram
- Back-splash matching granite
- Oven GE monogram, stainless steel
- Refrigerator/freezer 22-cu.ft. with ice and water dispenser
- Custom teak face panels on refrigerator/freezer doors, **UPGRADE**
- Dishwasher (Bosch), with matching teak face panel, **UPGRADE**
- Recessed pull-out spice-rack
- Overhead Air conditioning duct
- **(Note)** All appliances spotless, “like-new” condition
- Appliances with matching teak face panels, **UPGRADE**

DAY HEAD

- Located opposite of Galley, to starboard
- Privacy door, with lock
- Granite floor, with decorative border inlay
- Vanity, with granite countertop
- Under-mount sink, with chrome fixtures
- Vinyl, color appropriate wall covering
- Teak joinery
- Under vanity storage
- Vanity mirror, with black walnut frame
- Overhead with LED lighting

- Exhaust fan
- Air-conditioning duct
- Window, with pull-down privacy shade
- Head (Headhunter), fresh-water jet head, **UPGRADE**
- “T”-paper holder
- Hand-towel holder
- 110V outlet with safety GFI breaker

MAIN SALON

- Headroom 6’ 9”
- Access through glass/teak framed sliding door from Aft Deck
- Retractable screen door
- Fixed large viewing windows, 3/8” thick tinted safety glass
- Window valances, teak, with LED rope lighting
- Privacy shades, (Hunter Douglas)
- Overhead high-gloss beam ceiling, with LED lights on dimmer
- Overhead ceiling with high-gloss teak grab rail
- Carpeted salon floor
- Burlwood post panel inserts, between salon windows, **UPGRADE**
- Sconce lighting at windows post panels on dimmers
- “L”-sofa built-in, with custom cushions and storage below
- Cocktail/dining table, high-low, with gas shock, 5’L x 2’7”W
- Table, high-gloss matching teak, with compass rose inlay
- Table dust/storage cover
- Entertainment center cabinet, with TV lift and swivel base
- Barrel chairs, leather, with swivel bases, and storage below

- End table teak with matching granite countertop and lamp
- Built-in cabinet with louvered doors and U-line Icemaker
- Central vacuum outlet
- Starboard aft salon stairs to crew/engine room, **UPGRADE**
- All salon counter-tops, burlwood, satin finished
- Pull-out liquor storage cabinet with bottle cut outs
- Digital air-conditioning thermostat
- All bullnoses high gloss varnished
- Overhead air conditioning duct, port and starboard
- All cabinet and drawers chrome push button pulls
- Swivel art light on dimmer forward starboard salon, **UPGRADE**

SALON ENTERTAINMENT

- TV with lift and swivel base 46" (Samsung)
- DSS Receiver (Direct TV)
- Blu-ray player, 3D, Wi-Fi (Samsung)
- AM/FM Satellite receiver (Audiovox)
- Satellite radio antenna (Shakespeare SRA-40)
- A/V Receiver (Denon)
- Speakers (5) ceiling flush mount (Speaker-craft 9")
- Subwoofer (1) 8" (Niles)
- iPod Dock (Sonance FS-23)
- TV/Stereo controller (Extron)
- Wi-Fi router

AFT DECK

- Headroom 6' 8"
- Teak deck, **UPGRADE**
- **(Note)** Overhang/Boat deck extends beyond Aft Deck bench seat
- CCTV Camera **(Note)** for towing boat aft of overhang, **UPGRADE**
- Working lights transom located overhang, (2) halogen, **UPGRADE**
- LED overhead lights with dimmer switch, **UPGRADE**
- CCTV camera at salon bulkhead/security boarding camera
- Wing doors port and stbd with glass top and bottom inner panel windows, **UPGRADE**
- Boarding gates with stainless steel (Outer Reef) step plate
- Overhang to aft bench seat white textaline removable sunshade, **UPGRADE**
- Cleats port and stbd, heavy duty with stainless steel backing plates
- Wet bar, molded fiberglass, with wet bar cabinet, drawers, **UPGRADE**
- Sink with single lever faucet, upgrade U-line undercounter refrigerator
- (3) 110V outlet with GFI breaker and waterproof cover
- Aft built-in bench seat 6'-wide, with cushions and cover
- Aft deck table 6'L x 3'W teak high gloss varnish with compass rose inlay
- Stainless steel table pedestals
- In/out slide with locks on table, **UPGRADE**
- Chairs (3), teak folding high-gloss varnished, with cushions and covers (Westminister)
- (4) Stainless steel overhang/boat deck supports
- Port and stbd. storage lockers
- (2) 6" overhead stereo speakers
- Sliding door to Salon with glass window top and bottom
- Port and starboard safety gates, with lexan inner panels to swim platform, **UPGRADE**

- Stainless steel removable TV stand for 28" TV, **UPGRADE**
- **(Note)** (1) 28" TV (Samsung) for TV, stands located Pilothouse, Bridge and Aft Deck
- Stairs with teak treads, stainless steel grab rails, sliding hatch with window, **UPGRADE**
- Stairs from Aft deck to Flybridge/Boat Deck, **UPGRADE**
- LED lights on stairs to Flybridge/Boat Deck

SWIM PLATFORM

- Extended from 4' to 5' deep, **UPGRADE**
- Teak on swim platform, **UPGRADE**
- (3) Euro-style stainless steel safety rails, removable
- (2) Stainless steel storage sockets for euro rail, **UPGRADE**
- Stainless steel rub-rail
- (2) 15" Stainless steel cleats
- Swim platform ladder, Armstrong, (4) step dive ladder, **UPGRADE**
- Shower hot/cold with pullout sprayer in recessed locker
- Crew/Engine room access through water-tight door
- **(Note)** transom door has entry alarm
- LED step courtesy lights
- Dockside water inlet, with pressure regulator and tank fill
- Port and stbd. Stainless steel grab rails at steps
- Underwater lights (2) LED, Aqualuma White, at transom, **UPGRADE**

MASTER STATEROOM

- Headroom 6' 6"

- Accessed from Pilothouse stairwell or Engine Room
- Located midship, full beam
- King berth, athwartship, with drawers below, headboard
- Nightstands, with granite counter tops and drawers
- Reading lamps
- Air conditioning from (1) 18,000 BTU to (2) 12,000 BTU units, **UPGRADE**
- Digital thermostat control
- Built-in overhead circulation fan with speed control, **UPGRADE**
- Starboard (3) opening port lights, (2) standard, (1) **upgrade**
- Sohji screens sliding
- His & Hers closets, cedar-line, (Note) Hers is walk-in
- Safe digital built-in locker, located in hers closet
- Additional storage shelves in hers closet
- Mirror wall mounted full height with teak frame, **UPGRADE**
- Privacy door, with locks
- (2) Linen/storage lockers with shelves
- Built-in storage locker with drawers below
- Built-in dresser with granite counter top and (6) drawers below
- **(Note)** Excellent drawer, hanging locker, storage cabinet space
- Heat/smoke alarm
- Overhead LED lighting
- Carpeted sole (**note**) manufacturer's standard flooring under carpet
- TV built-in cabinet with book shelf and sea rails
- Satin finished traditional teak paneling
- High-gloss varnish on cabinet bullnoses

MASTER STATEROOM ENTERTAINMENT

- TV 32" (Samsung), ultra-thin, cabinet and wall mounted
- DSS Direct TV Satellite Receiver
- Blu-ray player (Samsung)
- Wi-Fi wireless router
- AM/FM receiver HDMI (Denon)
- Speakers (2) 7" flush-mounted in overhead
- Subwoofer 6.5", Niles SW65N
- iPod dock
- Garmin GMI 10, with cover, wind speed, direction, air temp
- CCTV controller displays CCTV cameras on TV
- RTI universal controller

MASTER HEAD ENSUITE

- Headroom 6' 7"
- Sliding teak pocket door
- Marble flooring upgraded from teak and holly
- Overhead with LED lighting
- Air conditioning duct
- Exhaust fan stall shower, with 6' 9" headroom
- Opening portlight, with privacy cover
- Mosaic tile floor
- Shower seat
- Overhead LED light
- Shampoo holder
- Shower faucet with removable hand sprayer, Grohe

- Adjustable soap holder
- Shower sump, with backup sump pump
- Vanity with matching marble counter top and backsplash
- Single under-counter mounted sink
- Faucet, with hot/cold faucet controls (Grohe), chrome
- 110V outlet, with safety GFI breaker
- Hand-towel holders (2)
- Medicine cabinet, with mirrored sliding doors
- Vanity overhead LED lights
- Under-vanity storage and drawers
- Cabinetry matching teak, satin finished
- Wall coverings, vinyl
- Separate head/WC, with privacy door
- Head (Headhunter), freshwater, Royal Flush, **UPGRADE**
- (2) Matching towel racks
- “T”-paper holder
- Storage cabinet
- Opening port light
- Overhead LED light

MASTER/GUEST STATEROOM FOYER

- Access from circular stairwell from Pilothouse
- Teak stairs, with courtesy lights, bolen-woven non-skid cover
- Stairwell matching teak bannister/hand-rail
- Washer and dryer (Bosch), stack built-in, with locker door

- Central vac outlet, bottom of stairs
- Overhead with LED lights
- Upper and lower stairwell light switches
- Bilge access hatches
- Access to all staterooms
- Bilge exhaust blower, **UPGRADE**

VIP STATEROOM

- Headroom 6' 8"
- Centerline tapered queen berth
- Lift system on berth, with gas shocks for storage access, **UPGRADE**
- Storage drawers below berth
- Reading lamps
- Overhead with LED lighting
- Overhead ventilation/escape hatch, with skylight, screen, blackout
- Carpeted flooring
- Air conditioning with digital thermostat
- Port and stbd. hullsides book shelves, with sea-rails, **UPGRADE**
- Port and stbd. portlights, with black-out covers
- Port and stbd. cabinet top ledges, with storage lockers below
- Port and stbd. cedar-lined hanging lockers with ventilated doors
- Hanging lockers, with automatic lights
- Cabinetry satin finished teak
- High-gloss cabinet bullnoses
- (2) 110V outlets

- Matching wall covers
- Two steps each side of berth for easy access
- Rope/indirect LED lighting at bookshelf valances
- Privacy door, with lock

VIP ENTERTAINMENT

- TV flatscreen 19" (Toshiba)
- DSS satellite receiver (Direct TV)
- **(Note)** TV flip drop-down from headliner, **UPGRADE**
- AM/FM stereo, with iPod dock (Fusion)
- (2) Overhead flush-mounted 7" speakers
- Blu-ray player (Samsung)

VIP ENSUITE HEAD

- Headroom 6' 7"
- Privacy door with lock
- Teak and holly sole
- Overhead with LED lighting
- Mirrored medicine cabinet, with sliding doors
- Air conditioning duct
- Exhaust fan
- 110V outlet, with safety GFI breaker
- Hand-towel holder
- Vanity, with granite counter-top and backsplash

- Under-counter mounted sink (Kohler)
- Faucet, with hand sprayer (Grohe) chrome
- Port light, with opening, with frosted window
- Shower door, clear glass, with towel bar
- Shampoo/soap holder
- 110V outlet, with safety GFI breaker
- (2) Towel bars
- Wall covers, vinyl
- Air conditioning duct
- Exhaust fan
- Stall shower, with clear glass, door with towel bar
- Shower floor mosaic tile
- Overhead LED lighting
- Faucet, with handheld sprayer
- Opening frosted portlight
- Under vanity storage
- Head (Tecma), freshwater

PORT GUEST STATEROOM

- Headroom 6' 7"
- Double berth, with reading lamp and drawers below
- Opening portlight, with black out shade
- Privacy door with lock
- Overhead with LED lighting
- Valance LED indirect lighting
- Air conditioning, with digital thermostat
- Pullman upper fold-down single berth, with reading light
- 110V outlet, phone jack

- Cedar-lined hanging locker, with automatic light
- Hanging locker door ventilated
- Cabinetry satin finish teak, with high-gloss bullnoses
- Carpeted flooring
- Heat/smoke detector

PORT GUEST STATEROOM HEAD

- Ensuite
- Teak and holly sole
- Overhead with LED lighting
- Medicine cabinetry, with sliding mirror doors
- Privacy door with lock
- Hand-towel holder
- Vanity, with granite countertop and backsplash

- Sink under-counter mounted (Kohler)
- Faucet (Grohe), chrome

STAIRWELL FROM SALON

- Steps and landing, with bolen-woven non-skid flooring
- Teak hand-rail
- Stairs lift for storage under stairs
- Built-in storage lockers with shelves
- Air handler access
- Overhead LED lighting
- Privacy door with lock

CREW QUARTERS/ENGINE ROOM

- Headroom 5' 10"
- Access from water-tight transom door, main salon, and master stateroom
- Stairs at transom door, lift to access rudder/thruster area
- Flooring beige coin dot, with bilge access hatches

- Teak paneling with vinyl wallcovering
- Vinyl overhead, with LED lighting
- Portlights opening, with storm shutters, stainless steel
- Work bench 5' L x 23" W, stainless steel counter top
- Over and under counter storage lockers and drawers
- Cable-master storage, davit motor access
- LED work bench lighting
- Stereo with (2) flush-mounted speakers
- Work bench, with starboard inset removable top
- Air conditioning digital thermostat
- Central vacuum outlet
- Freezer built-in upright 5' H x 2' W x 19" D (Danby), **UPGRADE**
- Teak hand/grab-rail at transom entrance steps

CAPTAIN'S CABIN

- Headroom 5' 8"
- Located port-side aft
- Double berth, 6' 5" L x 4' W, with drawers below
- Port light opening, with storm shutter, stainless steel
- Vinyl overhead, with LED lighting
- Reading lights (2)
- Hanging lockers (2), cedar-lined
- Carpeted flooring, with bound borders for easy removal
- TV built-in 18" (Toshiba) with DVD player and DSS receiver
- Access panel to port transom, 50amp cable-master locker

- Air conditioning digital thermostat
- Privacy door with lock, pocket, sliding, teak

CAPTAIN'S HEAD

- Ensuite head, with privacy door
- Vinyl overhead, with LED lighting
- Opening port-light, with storm shutter stainless steel
- Teak and holly sole
- Practical vinyl wall coverings, with teak cabinetry
- Air conditioning duct
- Head, freshwater, Techma
- Shower, Stahl, with glass door and overhead light
- Towel rack
- Exhaust fan
- Vanity granite countertop, with backsplash and sink
- Faucet, single lever, Grohe, chrome
- Wall mirror, with matching teak frame
- Under vanity storage
- 110V outlet, with GFI breaker

CREW GALLEY

- Countertop matching granite with backsplash
- Sink, stainless steel, under-counter mounted
- Faucet, single level, pull-out sprayer

- Under-cabinet LED lighting
- Over and under counter storage lockers
- Refrigerator with freezer, under-counter, with stainless face panel
- 110V outlet, with safety GFI breaker

ENGINE ROOM

- Headroom 5' 10"
- Located forward of Crew Quarters and aft of Master Stateroom
- Full beam
- Access through fore and aft water-tight doors, with viewing port-holes
- Acoustically sound insulated
- Overhead machinery removal hatches
- Flooring durable Endura, beige coin dot
- Floor with battery/bilge access hatches
- Overhead LED AC/DC lighting (8)
- Overhead fore and aft CCTV cameras
- Port and stbd fuel saddle tanks, 750-gallons each, with sight gauges, aluminum
- Sea chest, port and stbd, with viewing window
- Work bench 32"D x 40"W, with 4-1/2" vice
- Work bench/tool box platform, stainless steel, 36"D x32"W, removable over 5th engine, **UPGRADE**
- Tool box 5-drawer, with mirrored lid (Craftsman)
- Grab-rail, safety guards around main engines, stainless steel
- Fiberglass sealed drip pans under main engines
- Fore and aft water-tight bulkheads
- Fore and aft 110V outlets with GFI breakers

ENGINES

- Twin C-9 Caterpillars, 503HP each with 210 hours
- Gears ZF360A/ Ratio 2.609:1 to accommodate PTO, **UPGRADE**
- Shafts 2 1/2" Aquamet 22 w/ dripless seals and spares, **TIDES**
- Shaft spurs, line cutters, **UPGRADE**
- PTO on port and starboard gears
- Fuel filters, Racor 1000 dual w/ vacuum gauge and selector valve
- Electrolysis brushes on shafts
- Props: 35"x26"x 4 blade Nibral "S" Class
- Start/stop, oil pressure gauge package, **UPGRADE**
- Exhaust risers fiberglass insulation, **UPGRADE**
- Safety rails around engines, stainless steel
- Fiberglass drip pans under engines

ELECTRICAL

Port: 20kW Northern Lights Generator 1800 RPM, with 215-hours

- Soundshield
- Engine room start/stop, with oil, water temperature, voltage, hour meter
- Remote start/stop, with hour meter, Pilothouse
- Water/exhaust separator muffler
- 12V start battery, with battery box
- Water/exhaust separator filter, Racor 1000
- On/off battery switch
- Generator parallel switch

Starboard: 20kW Northern Lights Generator 1800 RPM, with 215-hours

- Soundshield
- Engine room start/stop with oil, water temperature, voltage, and hour meters
- Remote start/stop, with hour meter, Pilothouse
- Water/exhaust separator muffler
- 12V start battery, with battery box
- Water/exhaust separator filter, Racor 1000
- On/off battery switch

BATTERIES

- Port engine start batteries (2) 24V AGM, with battery box, with lid
- Starboard engine start batteries (2) 24V AGM, with battery box, with lid
- Generator batteries (2) 12V AGM, with battery box, with lid
- (4) Additional house batteries AGM, with battery box, with lid, **UPGRADE**

INVERTER

- Schneider Electric
- Charger/inverter 4kW, 24V to 115V

SHORE CORDS

- (1) 100amp, single phase, with 75' cord on cable-master
- **(Note)** 100amp cord, located starboard transom
- (1) 100amp with boost isolation transformer (Charles Industries)
- (1) 50amp with boost isolation transformer

- (1) 50amp, 50' cord on cable-master, located port transom
- (2) 50amp inlets, port bow, with (2) 50' manual cords
- Shore power mix and match selector switch

CHARGERS

- (1) Guest 12V, 10amp charger
- (1) Master volt 24V/40amp charger
- **(Note)** 100amp and 50amp shore cord breakers
- Conveniently located in locker inside at transom door

AIR CONDITIONING

- (2) 60,000 BTU chillers reverse cycle (Cruisair)
- Master stateroom increase air handlers from (1) 18,000 BTU unit to (2) 12,000 BTU units, **UPGRADE**
- Pilothouse increase from (2) 12,000 BTU units to (2) 18,000 BTU units air handlers, **UPGRADE**
- Chillers to (2) 60,000 BTU units, **UPGRADE**
- A/C remote monitor panel in Pilothouse, **UPGRADE**
- Flybridge (2) 18,000 BTU units, **UPGRADE**
- Add (1) raw-water back-up seawater pump, **UPGRADE**
- Digital thermostats throughout
- Soft starts on chillers, **UPGRADE**

OIL CHANGE SYSTEM

- Reversible pump 24V mains, gears, gen sets, with manifold

FUEL POLISHING SYSTEM

- 110V, with timer, water separator, fuel filter and vacuum gauge (reverse)
- Manifold with supply and returns to all (3) tanks

FIRE SYSTEM

- Fireboy FM200, auto/manual, with air intake shut downs
- Next certification: January 8, 2017

BILGE PUMPS

- (4) Auto/manual 24V w/ engine driven emergency pump
- High water bilge alarm
- Bilge alarm integrated in GOST alarm system

WATER MAKER

- 1,800 gallon per day (FCI Watermakers)
- Pilothouse remote start
- Freshwater flush every (7) days, automatic

BOW & STERN THRUSTER

- **Upgrade** to 25HP, with 12' tube and dual props (ABT)
- **(Note)** Windlass upgraded to hydraulic
- Pilothouse, Flybridge controls
- Proportional controls

STABILIZERS

- Digital upgrade fin from 6-sq.ft. to 7.5-sq.ft. (ABT Trac 220)
- Flybridge and Pilothouse switches

FRESHWATER SYSTEM

- Freshwater tank 400-gallons, stainless steel
- Freshwater deck fill, starboard forward side deck
- Glendinning electric hose reel, with 75' x 5/8" hose, located forward Portuguese Bridge
- Hot water heater (2) 20-gallons each, 115V with heat exchanger
- Water pumps (1) Headhunter Mach 5, 115V, upgrade option (1) 24V DC
- Dockside water inlet, with diverter valve for tank fill, **UPGRADE**
- Freshwater shower with pull-out sprayer, hot and cold, for swimming
- Freshwater level gauge tank tender, with calibration card, located Pilothouse
- Freshwater washdowns – Foredeck, Aft Deck, Flybridge

HEAD SYSTEM

- Holding tank, 200-gallons, fiberglass
- Dockside pump-out deck fitting, stbd. forward side deck
- Overboard discharge macerator pumps (2), (1) as backup
- All heads freshwater
- **(Upgraded heads)** day head, master, VIP to Headhunter jet-heads
- Guest Stateroom and Crew heads (Течма)
- Tank level gauge, Headhunter, tank sentry with alarm, manual/Auto pump-out, power on/off switch

BREAKER PANELS

- Located in Pilothouse
- 12V/24V, with volt and amp meters
- 110V/240V, with volt meters, selector switch

EXCLUSIONS

- Tools, owner's personal items, a detail list will be supplied at time of sale

BROKER'S REMARKS

Southern Belle is perhaps the finest example of the premier long-range yacht builder. Custom built for her original and present owner, combined with his +40 years of boating and having owned yachts over 100', **Southern Belle** clearly reflects this in her systems, electronics and having been kept in pristine condition. If you desire the best and if now is the time to fulfill a life-long dream without new construction wait and all warranty issues addressed, **Southern Belle** is a prudent choice for a knowledgeable, perfectionist yacht owner. A must see if you want the best and ready to go cruising now.

VIRTUAL TOUR

For a virtual tour of SOUTHERN BELLE, please follow the link below:

Исключения

При продаже яхты исключаются личные вещи владельца.

Отказ от ответственности

Компания предоставляет описание судна или яхты добросовестно, но не может гарантировать точность этой информации, а также не ручается за техническое состояние. Покупатель должен проинструктировать своих агентов или оценщиков исследовать представленную информацию более подробно, по собственному желанию. Продажа судна или яхты, изменение цены или снятие с продажи будет происходить без предварительного уведомления.

ФОТОГРАФИИ

Southern Belle



Dockside



Foredeck



Windlass



Side Decks



Mast



Flybridge Helm Station



Flybridge Facing Forward



Flybridge Helm Seating



Flybridge Port Side Lounge



Flybridge Casual Dining Port Side



Flybridge Casual Dining Starboard Side



Boat Deck Storage



Boat Deck Wet Bar and Grill



Boat Deck



Boat Deck



Tender Helm



Tender Seating



Tender Forward Seating



Aft Deck



Aft Deck Dining



Aft Deck



Pilothouse



Pilothouse



Pilothouse Dining and Stairwell to Flybridge



Pilothouse Custom Bulkhead



Galley



Galley



Galley



Day Head



Starboard Side Main Salon



Main Salon



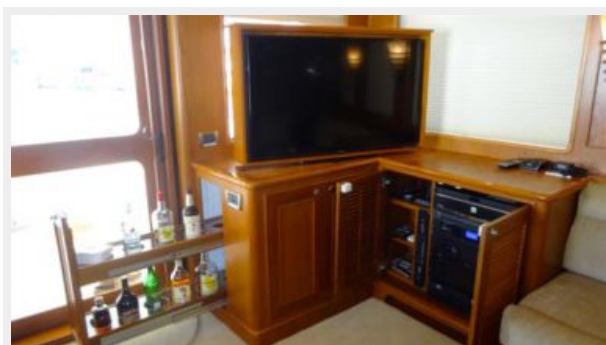
Main Salon "L"-Settee



Main Salon TV



Salon Entertainment



Master Stateroom



Master Stateroom



Master Stateroom



Master Stateroom Entertainment



Master Ensuite Head



VIP Stateroom



VIP Stateroom



VIP Ensuite Head



Port Guest Stateroom



Port Guest Ensuite Head



Crew Work Desk



Crew Galley



Crew Quarters Freezer



Captain's Cabin



Crew Head



Engine Room



Port Engine - CAT C-9



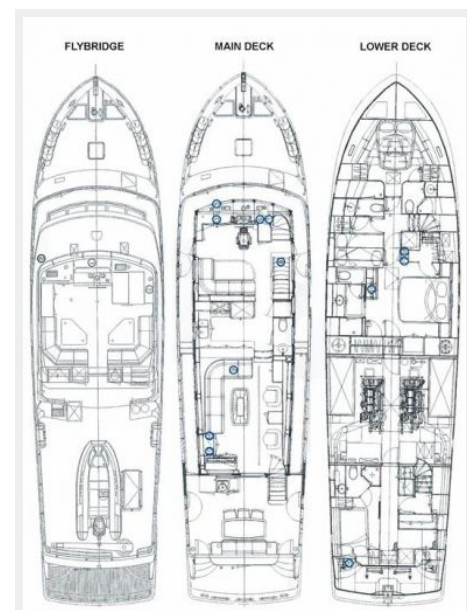
Starboard Engine - CAT C-9



Engine Room Work Bench



Engine Room Tool Box



КОНТАКТЫ

Андрей Шестаков (Andrey Shestakov) – ведущий яхтенный брокер отдела продаж яхт и судов компании Shestakov Yacht Sales Inc. Официальный представитель Shestakov Yacht Sales Inc. для русскоговорящих клиентов в центральном офисе компании в Майами/Форт Лодердейл/Флорида/США.

Контактная информация

Email: andrey@shestakovyachtsales.com

Web: shestakovyachtsales.com

Телефоны

Краснодарский край: **+7(918)465-66-44**

США, Майами, Флорида: **+1(954)274-4435**

Время работы

Понедельник – Суббота: **9:00 - 21:00**
EDT

Воскресенье: **Закрито**

Адрес



Harbour Towne Marina, 850 NE 3rd St,
STE 213, Dania, FL 33004