

## BT2 — AZIMUT



**Судостроитель:** [AZIMUT](#)

**Год постройки:** 2012

**Модель:** Моторная яхта

**Цена:** ЦЕНА ЯХТЫ ПО ЗАПРОСУ

**Местонахождение:** United States

**Длина общая:** 70' 0" (21.34m)

**Ширина:** 18' 3" (5.56m)

**Макс. осадка:** 5' 4" (1.63m)

Купить **BT2 — AZIMUT** а также выбрать подходящую вам яхту из нашего каталога яхт вам поможет опытный яхтенный брокер Андрей Шестаков. На сегодняшний день компания **Shestakov Yacht Sales Inc.** имеет большое количество яхт в собственном списке продаж, а также тесно сотрудничает со всеми крупными яхтенными производителями по всему миру.

Для того чтобы купить яхту **BT2 — AZIMUT** а также проконсультироваться по любому вопросу связанному с покупкой, продажей, чартером яхт позвоните по телефону **+7(918)465-66-44**.

# ОГЛАВЛЕНИЕ

---

ОГЛАВЛЕНИЕ	2
ХАРАКТЕРИСТИКИ	3
Обзор	3
Основная информация	3
Размеры	3
Скорость, вместимость и масса	3
Размещение	4
Корпус и палуба	4
Информация о двигателе	4
ПОДРОБНОЕ ОПИСАНИЕ	5
Major Features	5
Исключения	7
Отказ от ответственности	7
ФОТОГРАФИИ	8
КОНТАКТЫ	22
Контактная информация	22
Телефоны	22
Время работы	22
Адрес	22

# ХАРАКТЕРИСТИКИ

## Обзор

Located in Miami, FL. Not for sale to US Residents while in US Waters. Sleek Italian styling is prevalent throughout this popular 70' Flybridge model. The owner spared no expenses: Custom exterior paint scheme, designer interior décor, and all the most desirable optional equipment. The 4 stateroom layout with en-suite heads sleeps 8 guests in luxurious comfort, while there are 2 crew berths aft. Joystick controls make navigating a pleasure, while twin Seakeeper gyro stabilizers ensure the most stable ride achievable today.

## Основная информация

Тип судна: Моторная яхта

Подкатегория: Flybridge

Модельный год: 2012

Год постройки: 2012

Страна: United States

Верх: Hardtop

Открытая палуба мостика: Да

## Размеры

Длина общая: 70' 0" (21.34m)

Ширина: 18' 3" (5.56m)

Макс. осадка: 5' 4" (1.63m)

Длина привального бруса: 70' 0"  
(21.34m)

## Скорость, вместимость и масса

Водоизмещение: 45000 Pounds

Вместимость воды: 290 Gallons

Вместимость сточного бака: 118 Gallons Объем топливного бака: 1268 Gallons

## Размещение

---

**Всего кают:** 4

**Всего коек:** 8

**Спальные места:** 8

**Всего ком. состава:** 4

**Каюта капитана:** Да

**Каюты экипажа:** 2

**Койки экипажа:** 2

**Спальных мест экипажа:** 2

## Корпус и палуба

---

**Материал корпуса:** Fiberglass

**Цвет корпуса:** Grey

**Дизайнер корпуса:** Carlo Galeazzi

## Информация о двигателе

---

**Двигатели:** 2

**Производитель:** MAN

**Модель:** V12 CR

**Тип топлива:** Diesel

# ПОДРОБНОЕ ОПИСАНИЕ

## Major Features

\* Easy to see just 30 mins away from the 2016 Miami Boat Show! Sleek Italian styling is prevalent throughout this popular 70' Flybridge model. The owner spared no expenses in exterior paint schemes, designer interior décor, and desirable optional equipment on this 2012 US Spec vessel. The 4 stateroom layout with en-suite heads sleeps 8 guests in luxurious comfort, while there are 2 crew berths aft. Joystick controls make navigating a pleasure, while twin Seakeeper gyro stabilizers ensure the most stable ride achievable today. This combination is one of a kind!

### Notable Upgrades & Highlights:

New to the market, East to see in Aventura, FL. US Specification. 4/4 plus 2 crew layout. MAN V12 CR 1360 hp Engines, with 1000 hr service completed. 2 x Kohler 20 KW Generators. Twin Seakeeper Gyro Stabilizers Full time captain maintained, authorized service, turn-key. Custom Grey Hull / Black topside paint Upgraded Décor package – Decape Oak Wood. Marble countertops & designer window coverings / accents C Shape Sofa with ottoman, and convertible bed! 48" Samsung TV on lift. KVH SAT with Direct and Apple TV Xenta joystick docking controls Raymarine Navigational Package Samsung & Sony TVs in all cabins, with Bose surround sound. Fusion wireless exterior Audio controls. 2 adjustable power helm chairs. Upgraded Décor Package and electric blinds. Teak decks throughout Stern Underwater lights Hydraulic Swim platform Retractable Power Hardtop sunroof. Fly BBQ, fridge, icemaker, cutting station. Washer/ Dryer combo. Idromar Watermaker Safe in master cabin Epirb, 2 Viking Life rafts 325 Williams Jet Tender included

**Accommodations** Four stateroom Four head layout consists of a king master, queen VIP, double port guest, and a twin starboard guest. All feature rich Decape Oak wood interiors with upgraded décor package, en-suite baths with marble countertops, designer accents and top of the line entertainment systems.

**Specs** Builder: Azimut SPA Designer: Carlo Galeazzi Flag of Registry: BVI Dimensions LOA: 70 ft 0 in Beam: 18 ft 3 in Maximum Draft: 5 ft 4 in Displacement: 45,000 lbs Full Load

**Engines** Engine 1: Engine Brand: MAN Engine Model: 12V 1360 CRM Engine Type: Inboard Engine/Fuel Type: Diesel Engine Power: 1360 HP

Engine 2: Engine Brand: MAN Engine Model: 12V 1360 CRM Engine Type: Inboard Engine/Fuel Type: Diesel Engine Power: 1360 HP

**Tanks** Fresh Water Tanks: (290 Gallons) Fuel Tanks x 2: (1268 Gallons) Grey water tank (66 gallons ) Black Holding Tank: (118 gallons)

**Deck & Cockpit** • Side Boarding doors • Starboard side door into galley • Stainless steel rub rail • Fuel and water fillers on the side walkways • Black water tank discharge intake on the side walkways • Teak deck walkways, cockpit, fly, and platform. • Telescopic Gangway • Deck Winches • Bulwark to the stern cockpit • Teak Dining table with folding chairs.

**Transom** • Engine room access (transom door) • Two electric warping winches • Swim platform with 750kg maximum capacity • Lights on the bathing platform • Electro hydraulic retracting gangway (150 kg maximum lifting capacity) • Shower • Boarding ladder • Underwater Lighting Transom

**Flybridge Equipment** • Access from the cockpit via staircase • Access hatch opening • Height adjustable steering wheel • Teak table for 8 • Wet Bar with BBQ, fridge, icemaker, and sink. • Side built in seating • Sunbathing cushions at helm • Hardtop with power sunroof. • waterproof speakers • Fusion Stereo MS-IP600 • Engine control instrumentation • Xenta Joy Stick • Raymarine Dual E Series Radar/ Plotter • Raymarine ST6002 Auto Pilot • Raymarine VHF with Repeaters • Raymarine Tridata Depth/ Speed • Electric searchlight control Jabsco • Navigation lights • 2 Chaise Loungers • Teak Decking

**Bow Features** • Bow oversized sunbathing cushions with glass holders • Extra upgraded speakers in the bow with Fusion control. • 2500W Lofrans anchor winch • Anchor winch controls • Chain washdown • Anchor chain: 12mm diameter, 200mlength, 520 kg weight

**Main Deck - Helm Station** • Raymarine E120 Dual Plotter / Radar Screens • Raymarine Autopilot • Raymarine VHF Radio • Raymarine Tridata Depth/ Speed • System Alarms Display • Sockets, level gauges. • Rudder angle indicator • MAN indicators • Chain Counter Quick • Seakeeper Control • Remote controlled light • Dual Power Helm Seats • Adjustable steering wheel • Magnetic compass • Xenta Joy Stick • Joystick for trim tabs • Joystick for wipers • Side window opening

**Salon Features** • C Shaped upgraded leather Salon seating • Sofa converts into a bed for 2! • 1 Ottoman that converts into a coffee table • Furniture in matt varnished (decapé) oak wood • Panoramic oversized windows. • 46" Samsung Flatscreen TV on a lift. • 5.1 BOSE AM/FM Stereo Surround Sound • DirecTV and Apple TV • Deluxe Custom Electric Blinds • Saloon door curtain

**Dinette** • Dining Table for 8. • Bar unit and Fridge. • Bar unit for glassware, cutlery and tableware

## Galley

• Waeco refrigerator / freezer with Decapé oak wood door coverings. • Gaggenau burner glass ceramic stove top • GE Microwave • Gaggenau built in dishwasher with oak wood covering. • Dark marble countertops. • (2) Stainless steel sinks. • Designer Faucets • Decapé oak wood storage cabinetry and drawers. • Wood flooring. • "Azimut" tableware, glassware, cookware and cutlery.

**Master Suite** • King Size berth • Mattress, pillows and bedspread • Premium Leather and mirror headboard • Safe • Furniture in matt varnished (decapé) oak wood • Setee and Desk with additional vanity unit • Walk-in closet • Vanity unit • TV - 40" Sony • 4 drawers under TV • BOSE AM/FM Stereo with 2 Speakers • DirecTV Receiver • Panoramic Windows with 4 portholes • Emergency exit hatch. • Venetian blinds

**Master Head** • TECMA fresh water marine toilet. • Oversized Steam Shower with shelving • Vanity with Dark Marble countertop, designer wall lighting. • Integrated mixer tap with thermostatic function. • Mirrored cabinets over sink area. • Wooden flooring.

**VIP Cabin** • Queen Berth • Mattress, pillows and bedspread • Premium leather and mirror headboard. • Furniture in varnished (decapé) oak wood • 2 Wall cabinets • Panoramic Windows. • 2 Portholes that can be opened • TV - 26" Sony

**Guest Cabins- Port Side** • Two single Berths with filler option • Mattresses, pillows and bedspreads • Leather and Mirror headboard • Furniture in matt varnished (decapé) oak wood • Bed Linens with Sheets • 1 Nightstand • Opening porthole • TV – 26' Sony

**Guest Cabin- Starboard Side** • Two single berths with filler option • Mattresses, pillows and bedspread • Leather and mirror headboard • Furniture in matt varnished (decapé) oak wood • 1 Nightstand • Opening Porthole • TV - 26" Sony

**Crew Quarter** • Captains Cabin and 2nd Berth. • Shared wet- head with shower. • Carpeting on cabin floors • Furniture in matt varnished (decapé) oak wood • 1 Porthole that can be opened

**Engines & Mechanical** • 2 X MAN V12 1360 HP Common Rail engines, 1150 hours • Twin 20KW Kohler Generators in sound shields. • Dolphin 24 Volt/ 8 A Battery Charger • Tecma marine Toilets. • Two 220V fans • Two 220V air extractors • Racor Fuel Filters • ZF Transmissions • CruiseAir 90,000 BTU air conditioning system • Idromar Watermaker MC 3J • 24 Volt Oil change pump • Sight Gauge • Nibral Alloy Rudders • Fuel primer pump. • Inverter.

## Исключения

---

При продаже яхты исключаются личные вещи владельца.

## Отказ от ответственности

---

Компания предоставляет описание судна или яхты добросовестно, но не может гарантировать точность этой информации, а также не ручается за техническое состояние. Покупатель должен проинструктировать своих агентов или оценщиков исследовать представленную информацию более подробно, по собственному желанию. Продажа судна или яхты, изменение цены или снятие с продажи будет происходить без предварительного уведомления.

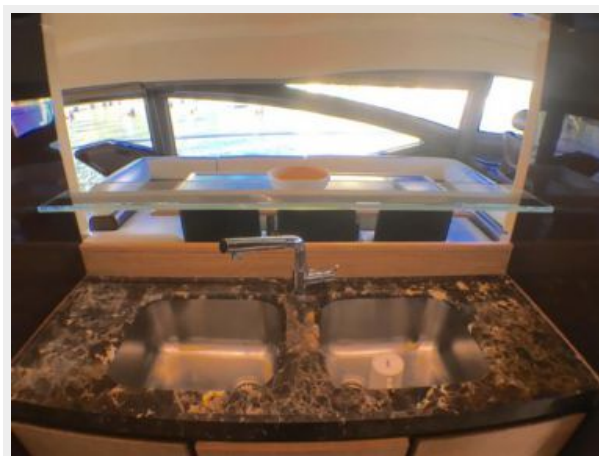
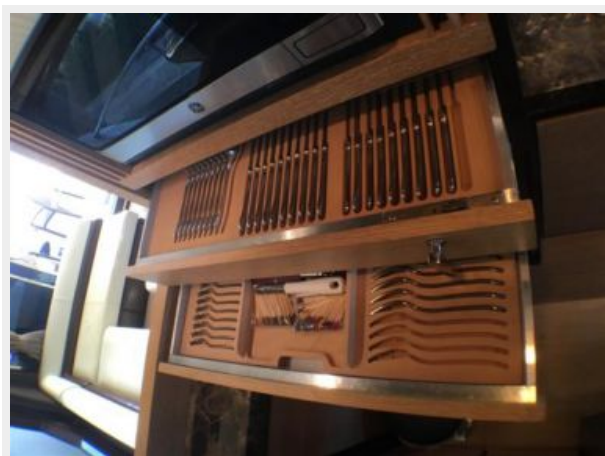
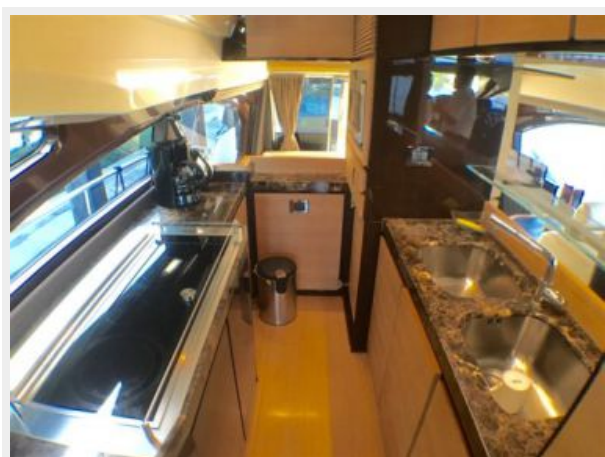
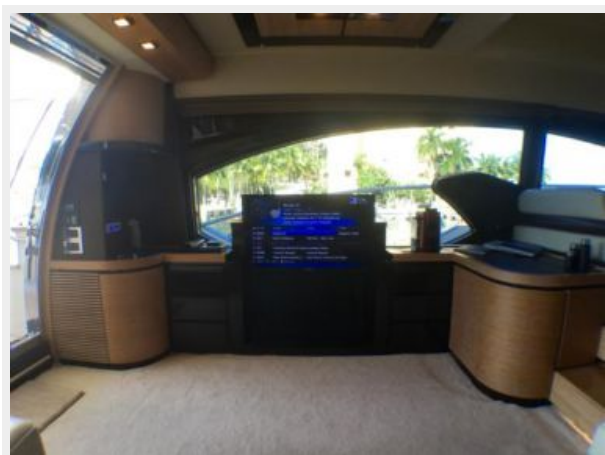
# ФОТОГРАФИИ



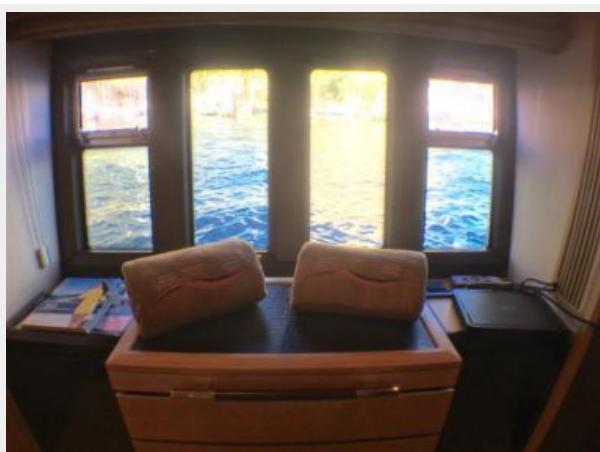


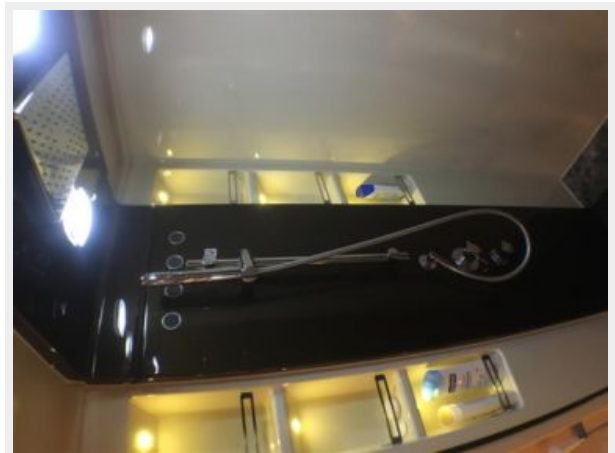


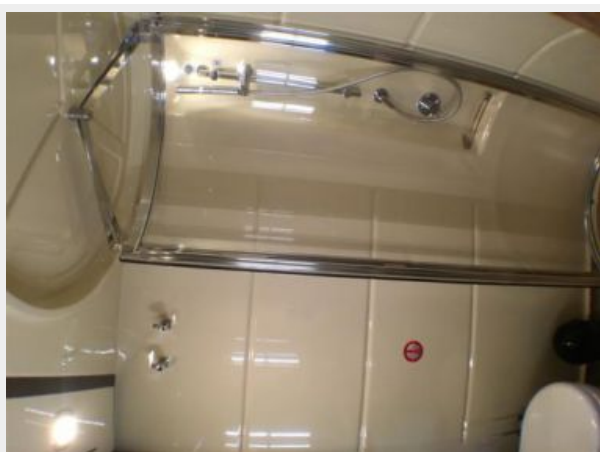
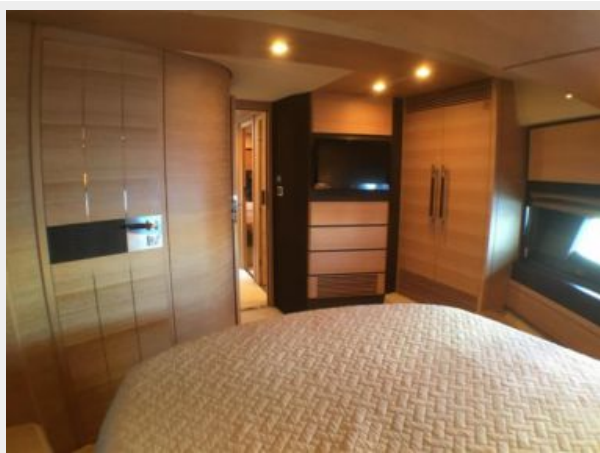


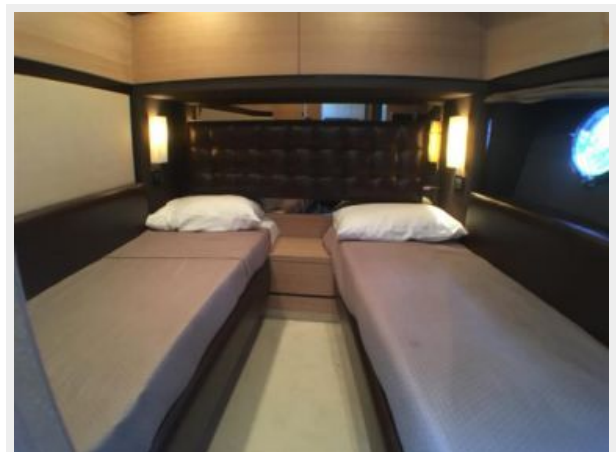
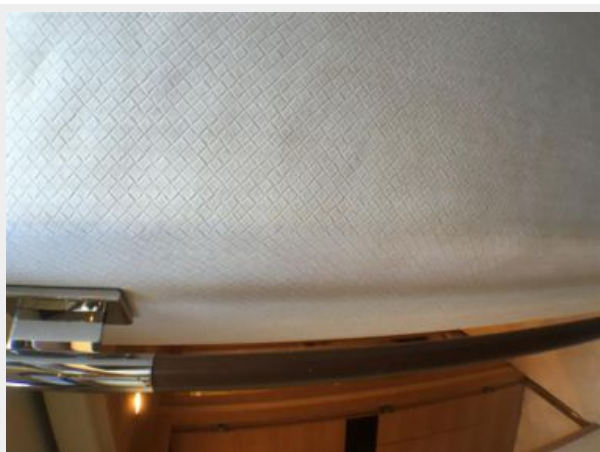
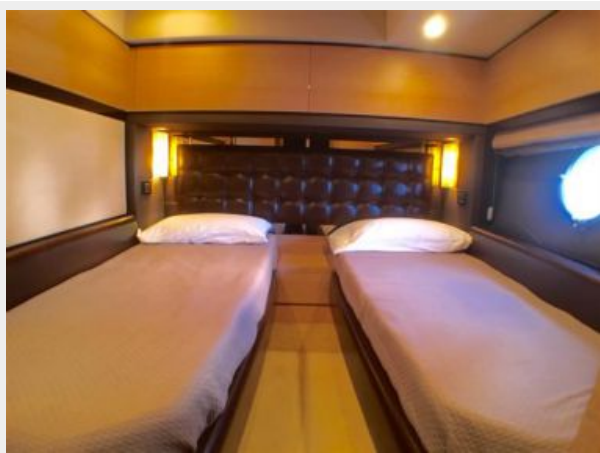




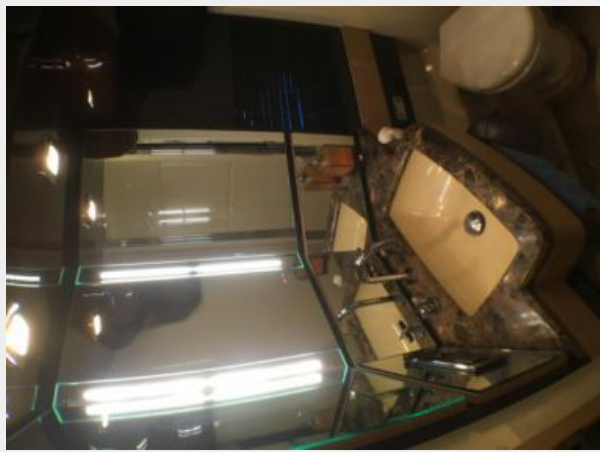


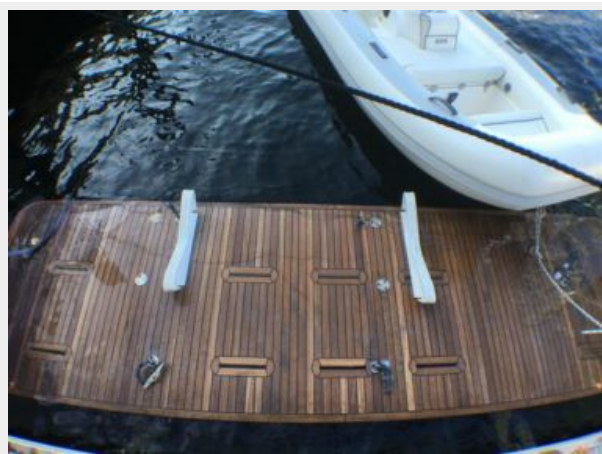




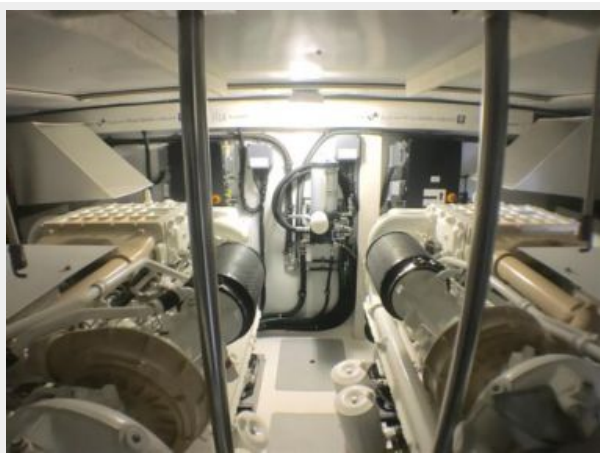


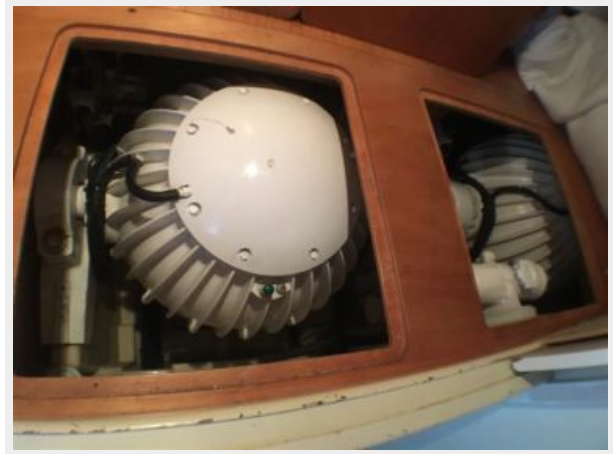












# КОНТАКТЫ

---

Андрей Шестаков (Andrey Shestakov) – ведущий яхтенный брокер отдела продаж яхт и судов компании Shestakov Yacht Sales Inc. Официальный представитель Shestakov Yacht Sales Inc. для русскоговорящих клиентов в центральном офисе компании в Майами/Форт Лодердейл/Флорида/США.

## Контактная информация

---

Email: [andrey@shestakovyachtsales.com](mailto:andrey@shestakovyachtsales.com)

Web: [shestakovyachtsales.com](http://shestakovyachtsales.com)

## Телефоны

---

Краснодарский край: **+7(918)465-66-44**

США, Майами, Флорида: **+1(954)274-4435**

## Время работы

---

Понедельник – Суббота: **9:00 - 21:00**  
EDT

Воскресенье: **Закрето**

## Адрес

---



Harbour Towne Marina, 850 NE 3rd St,  
STE 213, Dania, FL 33004