

48-212 — VIKING



Builder: VIKING

Year Built: 2016

Model: Sport Fisherman

Price: PRICE ON APPLICATION

Location: United States

LOA: 48' 0" (14.63m)

Beam: 17' 0" (5.18m)

Max Draft: 4' 8" (1.42m)

Our experienced yacht broker, Andrey Shestakov, will help you choose and buy a yacht that best suits your needs **48-212 — VIKING** from our catalogue. Presently, at Shestakov Yacht Sales Inc., we have a wide variety of yachts available on our sale's list. We also work in close contact with all the big yacht manufacturers from all over the world.

If you would like to buy a yacht **48-212 — VIKING** or would like help answering any questions concerning purchasing, selling or chartering a yacht, please call **+1(954)274-4435**

TABLE OF CONTENTS

TABLE OF CONTENTS	2
SPECIFICATIONS	3
Overview	3
Basic Information	3
Dimensions	3
Speed, Capacities and Weight	3
Accommodations	3
Hull and Deck Information	4
Engine Information	4
DETAILED INFORMATION	5
Manufacturer Provided Description	5
Exclusions	7
Disclaimer	7
PHOTOS	8
CONTACTS	19
Contact details	19
Telephones	19
Office hours	19
Address	19

SPECIFICATIONS

Overview

This new 48 Convertible is a handsome addition to the world famous Viking product line up with exciting styling, an impressive three stateroom layout with Viking's legendary construction and attention to detail. Beginning with the same resin infused beamy hull as the new convertible, which carries its breadth farther aft for more interior volume, a wider cockpit, and more running surface.

Basic Information

Category: Sport Fisherman

Sub Category: Sport Fisherman

Model Year: 2017

Year Built: 2016

Country: United States

Dimensions

LOA: 48' 0" (14.63m)

LWL: 42' 2" (12.85m)

Beam: 17' 0" (5.18m)

Max Draft: 4' 8" (1.42m)

Speed, Capacities and Weight

Displacement: 66342 Pounds

Water Capacity: 178 Gallons

Holding Tank: 52 Gallons

Fuel Capacity: 1215 Gallons

Accommodations

Total Cabins: 3

Hull and Deck Information

Hull Material: Fiberglass

Engine Information

Engines: 2

Manufacturer: MAN

Model: V8- 1200

Engine Type: Inboard

Fuel Type: Diesel

DETAILED INFORMATION

Manufacturer Provided Description

Building a better boat every day tells the story of each Viking yacht as it cruises along its evolutionary trail. When the first Viking 48

Convertible was launched in 1985 it was a powerful introduction that quickly went to the head of the fleet. Early models launched

with J & T turbo-charged 6V92TA Detroit Diesels and were soon followed with 8V92TA making waves as the fastest in its class. The

interior featured man-sized appointments, with a fashion plate of luxury details, rich teak joinery and opulent designer furnishings.

This was a popular boat and we built it steadily for five years.

Another 48 Convertible appeared on the scene in 2002. It featured a completely different hull and topside, a newer fresher interior

layout that was more accommodating for both fishing and cruising. Where the earlier 48C was a sharply defined and angular at

every corner and turn, the second generation 48 Convertible was an ice cream smooth operator with endless curves that melded

together in a singular statement of beauty. From the sheer to the bridge to the cockpit, there wasn't a straight line on the boat. The

flying bridge was twice the size of the previous 48C with more room fore and aft. The salon was even better with its U-shape galley,

dinette, and a larger sofa. Frameless windows replaced the maintenance heavy metal frames of the previous boat. Two and three

stateroom layouts made good use of space. Engineering improvements added more versatility like engineroom access from the

cockpit, and with our subsidiaries Atlantic Marine Electronics and Palm Beach Towers now part of the Viking organization, this 48C

could be delivered turnkey ready.

Fast forward to the 2016 model year and a new 48 Convertible is on the horizon ready to take its place in the Viking product line.

The exterior is sleek and powerful and the boat makes an impressive statement even resting at the dock. The wraparound black

metallic windshield mask, window lines and flying bridge feature treatments reveal how far we have come with this evolutionary

theme. The resin infused hull is beamy and carries its breadth farther aft for more interior room and a wider cockpit. The raked entry

and forward chine are designed to pierce through head seas and divert spray downward. Convex hull sections add curvature and

form to the running surface, while molded running strakes accentuate lateral tracking and maneuverability.

The lush interior abounds with hand-finished teak joinery and spacious appointments throughout the salon. An L-shape lounge and

cocktail table, as well as an inviting dinette anchor the area for relaxing, while to starboard the peninsula galley has a raised bar top

and is accented with Cambria treatments, under counter refrigeration, a microwave/convection oven and ample stowage. Three

staterooms and two heads give all the comfort and privacy you need for fishing and cruising in style. A laundry center and central

vacuum system add sophisticated convenience.

On the flying bridge, the center console helm and flanking lounges are tournament proven and will make the new 48 Convertible

the envy of anything in its class with its custom navigation and communication systems provided by Atlantic Marine Electronics.

Powered with MAN diesels the 48 Convertible will cruise at 30 knots with a top end in the mid 30 knot range depending upon

engine selection, load, sea and other environmental factors. Engineroom access is through the observation mezzanine in the

124 square-foot cockpit, which features flush rod holders, a transom fish box, and recessed fish and stowage wells in the nonslip

fiberglass sole. A transom door with lift gate, a drink box, a bait cooler and tackle stowage are standard. The lazarette is designed

to accommodate a Seakeeper gyro stabilizer, which can be installed at the factory or a later date.

Exclusions

Owner's personal belongings.

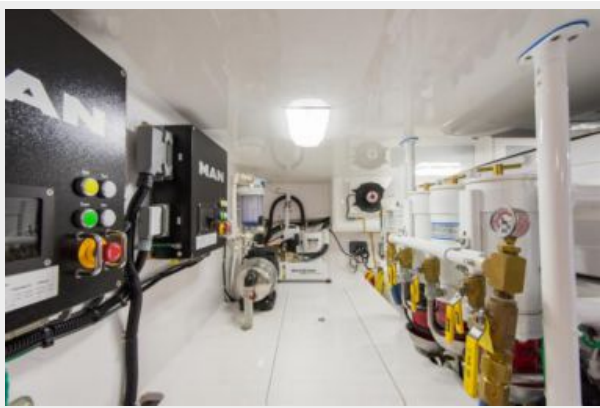
Disclaimer

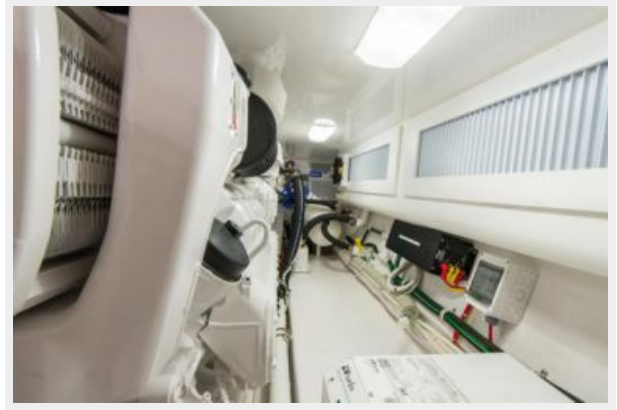
The Company offers the details of this vessel or yacht in good faith but cannot guarantee or warrant the accuracy of this information nor warrant the condition of the vessel. A buyer should instruct his representatives, agents, or his surveyors, to investigate such details as the buyer desires validated. This vessel or yacht is offered subject to prior sale, price change, or withdrawal without notice.

PHOTOS







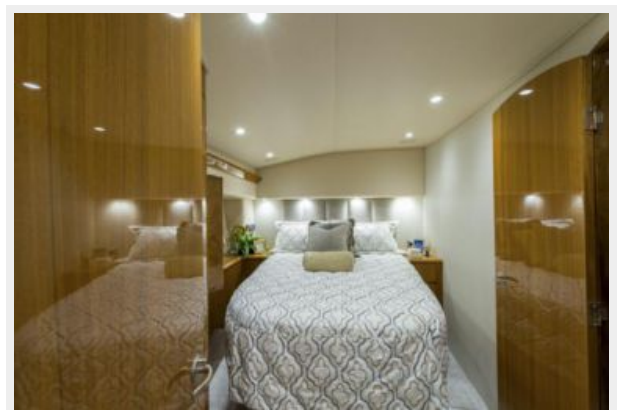
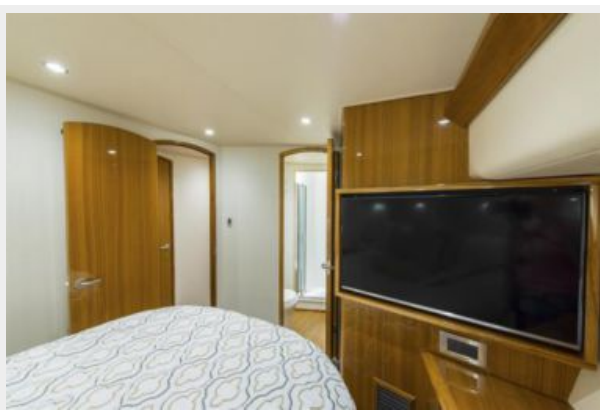
















CONTACTS

Andrey Shestakov, leading yacht broker of the sales department of Shestakov Yacht Sales Inc. Shestakov Yacht Sales Inc., the official representative of the Miami/Fort Lauderdale FL headquarters.

Contact details

Email: andrey@shestakovyachtsales.com

Web: shestakovyachtsales.com/en/

Telephones

USA: +1(954)274-4435

Office hours

Monday – Saturday: **9:00 - 21:00** EDT

Sunday: **closed**

Address



Harbour Towne Marina, 850 NE 3rd St,
STE 213, Dania, FL 33004