

ANNABELLE — FERRETTI



Builder: FERRETTI

Year Built: 2000

Model: Motor Yacht

Price: PRICE ON APPLICATION

Location: United States

LOA: 57' 0" (17.37m)

Beam: 16' 2" (4.93m)

Max Draft: 5' 3" (1.60m)

Our experienced yacht broker, Andrey Shestakov, will help you choose and buy a yacht that best suits your needs **ANNABELLE — FERRETTI** from our catalogue. Presently, at Shestakov Yacht Sales Inc., we have a wide variety of yachts available on our sale's list. We also work in close contact with all the big yacht manufacturers from all over the world.

If you would like to buy a yacht **ANNABELLE — FERRETTI** or would like help answering any questions concerning purchasing, selling or chartering a yacht, please call **+1(954)274-4435**

TABLE OF CONTENTS

TABLE OF CONTENTS	2
SPECIFICATIONS	3
Overview	3
Basic Information	3
Dimensions	3
Speed, Capacities and Weight	3
Accommodations	4
Hull and Deck Information	4
Engine Information	4
DETAILED INFORMATION	5
Major Features	5
Exclusions	5
Disclaimer	6
PHOTOS	7
CONTACTS	21
Contact details	21
Telephones	21
Office hours	21
Address	21

SPECIFICATIONS

Overview

This beautiful 57 Ferretti Flybridge is located in Miami Beach, FL and you will quickly discover that this passionate owner has spared no expense and has continually fixed or upgraded this masterpiece with an Open Checkbook over his last 14 years of ownership. Her gel-coat shines and her upholstery is in wonderful condition. Major 1000hr service has been completed and the yacht is ready to be cruised and enjoyed.

Once on board you will be amazed by her interior volume and open air feel. Lower helm allows for great visibility and you and your guests will enjoy the companion seating to port. A well equipped galley to starboard ensures everyone is taken care. Once up on the flybridge there is a helm with full electronics, a large bimini with a extended top, abundant open seating, a wet bar, electric grill; making entertaining a breeze while under way or on anchor...prepare to be impressed.

This 3 stateroom 2 head yacht for owners and guests provides a super layout. The pantry next to the galley with en suite head is not included in the above specs and can be converted back to a single berth state room as the fourth stateroom. The crew quarters is entered from the cockpit with a single berth and en suite head.

Basic Information

Category: Motor Yacht

Sub Category: Flybridge

Model Year: 2000

Year Built: 2000

Country: United States

Fly Bridge: Yes

Dimensions

LOA: 57' 0" (17.37m)

Beam: 16' 2" (4.93m)

Max Draft: 5' 3" (1.60m)

Speed, Capacities and Weight

Water Capacity: 185 Gallons

Fuel Capacity: 898 Gallons

Accommodations

Total Cabins: 3

Hull and Deck Information

Hull Material: Fiberglass

Engine Information

Manufacturer: Caterpillar

Model: 3406

DETAILED INFORMATION

Major Features

Recent Services and Upgrades: New Batteries, Jan 2015 New battery charger, 2015 Bottom service, March 2015 Fuel tanks cleaned, Nov 2015 Engine service, March 2015

Items in 2014 Replaced hydraulic hoses in passarelle Rebuilt bowthruster engine Rebuilt engine starters 1,000hr engine service Rebuilt steering pump and steering ram Installed new aluminum floors in engine room New outside cushions Custom work and cushions in salon

Installed new aft cockpit teak decks, 2011 New galley appliances, 2010 Galley and pantry refit: countertop, backsplash, dual sinks, custom pantry, wine cooler, 2008 Installed teak and holly wood floors throughout, 2007

Upgraded TV in salon, 42" Sony, new stereo system Sherwood surround sound in salon Three underwater lights One set of spare props One spare shaft

Master Stateroom (forward): A/C controls Light wood flooring Hanging locker Drawers LCD TV Ensuite head with stall shower

Guest stateroom (port side): Two twin size beds A/C controls Access door to guest head Light wood flooring Drawers Hanging locker LCD TV

Guest stateroom (starboard side): Two twin size beds A/C controls Access door to guest head Light wood flooring Drawers Hanging locker LCD TV

Guest Stateroom / Pantry (amidship): Single twin size bed Entrance via galley A/C controls Light wood flooring Drawers Hanging locker Shelves Sink with hot/cold water Head Wine cooler

Crew Quarter (port side): Single twin size bed A/C controls Head w shower **Lower Helm**

Electronics: Garmin 4210 FURUNO radar SIMRAD autopilot Raytheon depthfinder VHF Icon M127 Spotlight control RCL-100 Engine controls Vetus Bowthruster control

Flybridge: Garmin 4210 Raymarine depthfinder Standard VHF radio SIMRAD autopilot Vetus Bowthruster control Clarion stereo Engine controls Track Vision Extended bimini top BBQ grill New cooking plate New refrigerator New table New outside cushions, 2014

Bow: New stainless steel anchor Windlass and windlass control Custom bow cushions

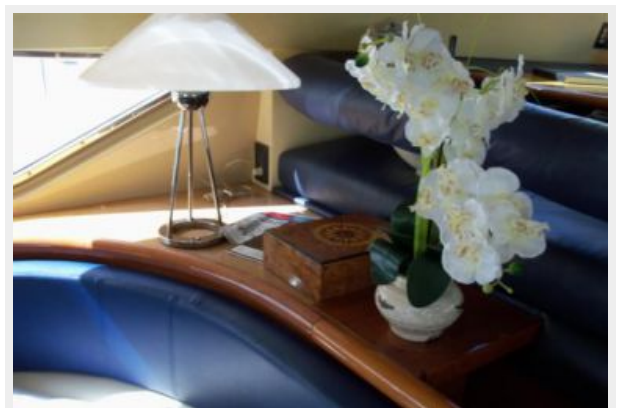
Exclusions

Owner's personal belongings.

Disclaimer

The Company offers the details of this vessel or yacht in good faith but cannot guarantee or warrant the accuracy of this information nor warrant the condition of the vessel. A buyer should instruct his representatives, agents, or his surveyors, to investigate such details as the buyer desires validated. This vessel or yacht is offered subject to prior sale, price change, or withdrawal without notice.

PHOTOS

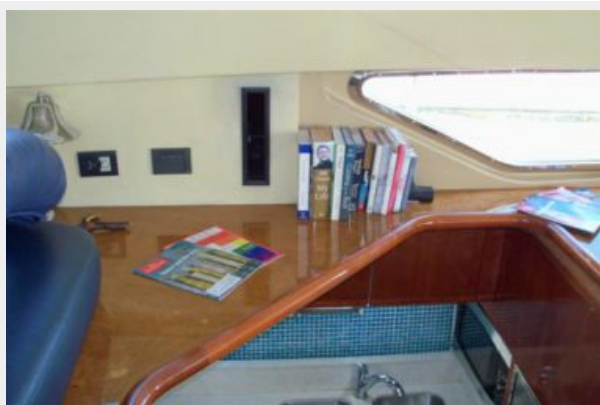




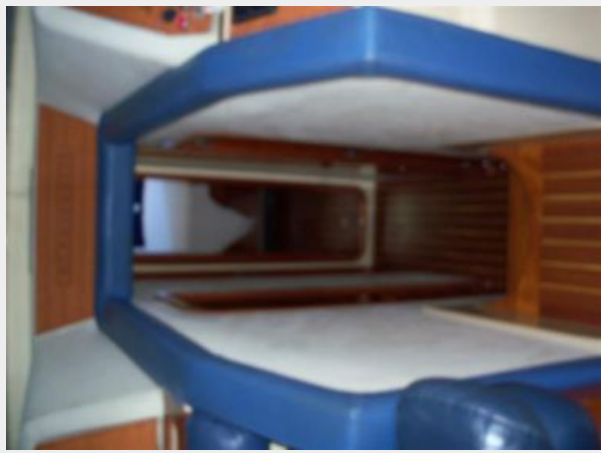


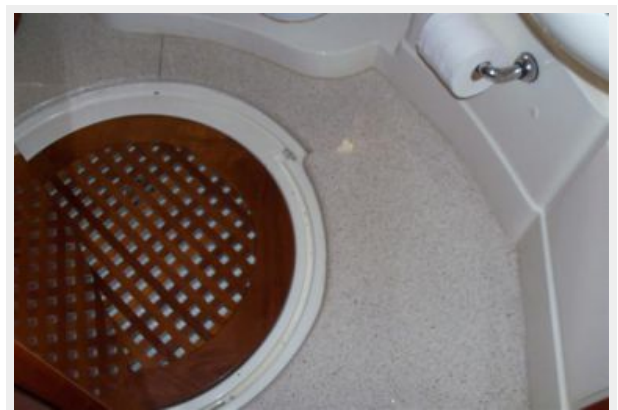
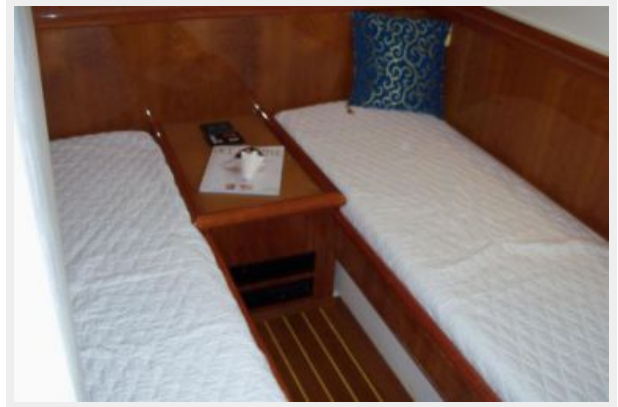




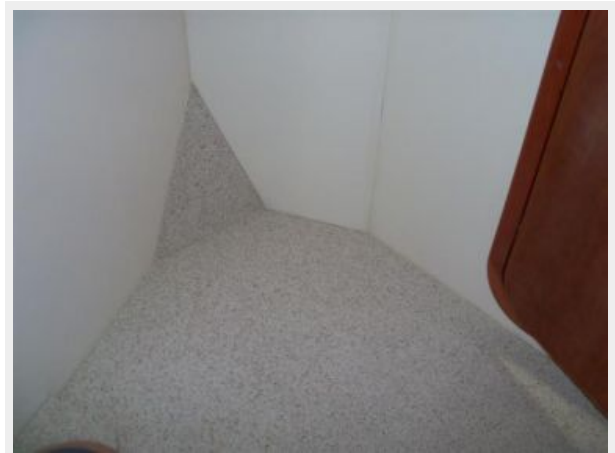




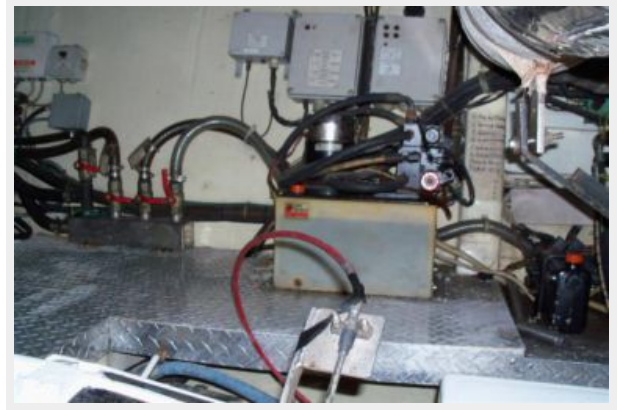














CONTACTS

Andrey Shestakov, leading yacht broker of the sales department of Shestakov Yacht Sales Inc. Shestakov Yacht Sales Inc., the official representative of the Miami/Fort Lauderdale FL headquarters.

Contact details

Email: andrey@shestakovyachtsales.com

Web: shestakovyachtsales.com/en/

Telephones

USA: +1(954)274-4435

Office hours

Monday – Saturday: **9:00 - 21:00** EDT

Sunday: **closed**

Address



Harbour Towne Marina, 850 NE 3rd St,
STE 213, Dania, FL 33004