

## FIJI — MARLOW



**Судостроитель:** MARLOW

**Год постройки:** 2005

**Модель:** Моторная яхта

**Цена:** **ЦЕНА ЯХТЫ ПО ЗАПРОСУ**

**Местонахождение:** United States

**Длина общая:** 61' 0" (18.59m)

**Ширина:** 18' 2" (5.54m)

**Макс. осадка:** 4' 2" (1.27m)

**Крейс. скорость:** 15 Kts. (17 MPH)

**Макс. скорость:** 23 Kts. (26 MPH)

Купить **FIJI — MARLOW** а также выбрать подходящую вам яхту из нашего каталога яхт вам поможет опытный яхтенный брокер Андрей Шестаков. На сегодняшний день компания **Shestakov Yacht Sales Inc.** имеет большое количество яхт в собственном списке продаж, а также тесно сотрудничает со всеми крупными яхтенными производителями по всему миру.

Для того чтобы купить яхту **FIJI — MARLOW** а также проконсультироваться по любому вопросу связанному с покупкой, продажей, чартером яхт позвоните по телефону **+7(918)465-66-44**.

# ОГЛАВЛЕНИЕ

---

ОГЛАВЛЕНИЕ	2
ХАРАКТЕРИСТИКИ	6
Основная информация	6
Размеры	6
Скорость, вместимость и масса	6
Размещение	6
Корпус и палуба	6
Информация о двигателе	7
ПОДРОБНОЕ ОПИСАНИЕ	8
The FIJI	8
Salon	8
Galley	8
Master Stateroom	9
VIP Stateroom	9
Port Guest Room and Office	10
Heads	10
Flybridge, Upper Helm and Deck	10
Pilothouse and Lower Helm	11
Aft Deck	12
Lazarette	12
Engine Room	12
Electrical System	13
Deck Equipment and Hull Equipment	13
Exclusions	14
Исключения	14
Отказ от ответственности	14
ФОТОГРАФИИ	15
Salon	15

---

Salon	15
Salon	15
Salon Wetbar	15
Galley	15
Galley	15
Galley	16
Galley	16
Breaker Panel	16
Master Stateroom	16
Master Stateroom	16
Master Stateroom	16
Master Stateroom	17
Master Stateroom	17
Master Stateroom	17
Master Stateroom TV	17
VIP Stateroom	17
VIP Stateroom	17
VIP Stateroom	18
VIP Stateroom Stateroom	18
Bunk Room and Office	18
Bunk Room and Office	18
Master Head	18
Master Head	18
VIP Head	19
VIP Head	19
Laundry	19
Laundry	19
Lazette	19
Engine Hours	19

---

---

Helm	20
Pilothouse Controls	20
Pilothouse Controls	20
Pilothouse	20
Pilothouse	20
Pilothouse	20
Pilothouse	21
Ship Monitor	21
Logo	21
Logo	21
Life Raft	21
Cockpit	21
Cockpit	22
Cockpit Doors Open	22
Cockpit	22
Cockpit Controls and Grill	22
Davit and Dinghy	22
Antennas	22
Bow	23
Bow Seating	23
Bow	23
Companionweay	23
Flybridge	23
Flybridge	23
Flybridge Dinette	24
Flybridge Dinette	24
Flybridge Covers	24
Flybridge Coms	24
Flybridge Controls	24

---

---

Flybridge Wetbar	24
Engine Room	25
Engine Room	25
Engine Room	25
Generator	25
Port Profile	25
Port Profile	25
Starboard Bow	26
Starboard Profile	26
Starboard Profile	26
Starboard Profile	26
Transom Profile	26
Swim Platform	26
Transom	27
<b>КОНТАКТЫ</b>	<b>28</b>
Контактная информация	28
Телефоны	28
Время работы	28
Адрес	28

# ХАРАКТЕРИСТИКИ

## Основная информация

Тип судна: Моторная яхта

Подкатегория: Pilothouse

Модельный год: 2005

Год постройки: 2005

Страна: United States

## Размеры

Длина общая: 61' 0" (18.59m)

Ширина: 18' 2" (5.54m)

Макс. осадка: 4' 2" (1.27m)

Трапы: 24' 0" (7.32m)

## Скорость, вместимость и масса

Крейс. скорость: 15 Kts. (17 MPH)

Макс. скорость: 23 Kts. (26 MPH)

Водоизмещение: 75000 Pounds

Вместимость воды: 500 Gallons

Вместимость сточного бака: 275 Gallons Объем топливного бака: 1800 Gallons

## Размещение

Всего кают: 3

Всего ком. состава: 2

## Корпус и палуба

Материал корпуса: Fiberglass

## Информация о двигателе

---

**Двигатели:** 2

**Производитель:** Luggar

**Модель:** 6140AL2

---

# ПОДРОБНОЕ ОПИСАНИЕ

---

## The FIJI

---

Fiji is a well-appointed Marlow Explorer 61C with 3 staterooms and 3 heads. Entering the salon from the aft deck you will feel the quality of Marlow Yachts and their craftsmanship. After moving forward through the salon you have entered into the large galley and main Pilot house. Watertight side deck doors to starboard and port will give you easy access to Portuguese deck and the foredeck. Making your way forward from the Pilot house to the starboard side, down the stairwell, will lead you to the Forward VIP, Port Guest Room\Office, and aft the Master Stateroom. The Fly bridge and upper Helm area has a Fiberglass hardtop this deck is accessible from the pilot house or from the aft deck stairs. There is ample seating for 8 with the twin L-settees that can be used for cruising or dining alfresco. This owner has kept this vessel with an open checkbook and shows extremely well.

## Salon

---

- Ultraleather settees with storage forward, aft and to starboard. Mood lighting below.
- 2 occasional chairs
- Wooden Venetian blinds over tinted glass
- Solid teak and holly sole with cream colored carpeting
- Wood valances with concealed mood lighting
- Hi-Lo table with storage beneath
- Wet bar with bottle and glass storage
- Two opening doors aft to Aft Deck
- Samsung 40" flat screen pop-up HDTV
- Sony Blu-ray disc player
- Direct TV satellite receiver
- Overhead lighting
- 6 Large windows

## Galley

---

- Dacor four burner electric cook top with stainless steel sea rails and pot keepers
- Subzero under counter refrigerator with two drawers
- Subzero under counter freezer with two drawers and icemaker
- KitchenAid full size dishwasher
- Sharp microwave/convection oven
- Teak and holly sole
- Franke stainless steel sink
- Granite countertops



- Grohe faucet
- Filtered drinking water faucet
- Overhead lighting
- Storage cabinet

---

## Master Stateroom

---

- Marine Air Digital AC control
- Queen size bed and cover
- (3) Cedar lined hanging lockers forward and aft.
- Separate full size Asko washer and dryer
- Air conditioning (reverse cycle chilled water)
- Gold-plated reading lamps
- Four drawers under berth and hidden storage
- Dressing hassock seat
- (2) En suite heads
- Forward head has separate shower and granite counter, Grohe fixtures, Franke sink and Vacuflush toilet
- Aft head has separate tub with shower, large granite counter, Grohe fixtures, Franke sink, Vacuflush toilet and Shoji screens over opening portlights with screens
- Manship heavy duty SS portlights with screens
- Sony HDTV flat screen
- Sony stereo with AM/FM and disc player
- Furuno RD-30 weather radio
- Overhead lighting

---

## VIP Stateroom

---

- Queen berth with cover
- 2 gold-plated reading lights
- Sharp flat screen TV
- Marine Air digital air conditioning control, reverse-cycle chilled water air conditioning
- Six large drawers under bed
- Four lockers port and starboard along hull with shelf above each side
- Overhead lighting
- (2) Overhead open hatches with screens
- Cedar lined closets port and starboard
- En suite head and shower with Vacuflush head, granite counter, Grohe faucets, Franke sink. This head has a second door to the companionway, permitting use by those in the port Guest Stateroom and Office as well as a day head.

---

## Port Guest Room and Office

---

- Upper and lower berths with covers and bolsters
- Two heavy duty opening portlights with screens and curtains
- Lighted and cedar-lined hanging locker with storage locker above
- Two drawers under lower berth
- Full desk/vanity with built in stool
- Large English beveled mirror
- Two lockers with office desk
- Two hanging file drawers
- Four desk drawers
- Reverse cycle chiller water air conditioning
- Gold plated reading lights
- Overhead lighting

---

## Heads

---

- Vacuflush Heads
- Granite countertops
- Franke sink
- Grohe faucets

---

## Flybridge, Upper Helm and Deck

---

- Composite molded hard top with electronics antennae and TracVision M7 KVH Satellite TV dome mounted above hardtop
- Red and white lights in hard top overhead. Companion deck lights
- Watertight easy access to Pilothouse
- Staircase to Aft Deck for quick control station transfer during docking evolutions
- Stidd helm and companion chairs
- Twin L-settees with tables
- Refrigerator
- Stainless steel sink
- Storage under settees and in large lockers
- 1000 pound full hydraulic davit
- Dinghy chocks
- Zodiac with 20 hp Yamaha motor
- Compass
- Raymarine flatscreen 16"
- Furuno GPS/WAAS Navigator DGPS GP-37

- Furuno NAVnet vx2 C-Map NT MAX-2
- Raymarine ST 60 Digital Depth display
- Simrad AP20 autopilot
- Sanshin HR-1012 spot light control
- Engine synchronizer
- Side power bow and stern thruster controls
- Trim tab controls
- Windlass controls
- ICOM M504 VHF Radio
- Poly-planar marine radio with AM/FM radio and disc player
- Intercom
- Refrigerator
- 12 volt outlet

---

## Pilothouse and Lower Helm

---

- Watertight doors port and starboard
- 2 open hatches with screens overhead
- Stidd helm chair
- Lower helm with teak and ebony steering wheel
- Overhead safety and control panel
- Teak table with folding leaves
- Ultraleather U shaped seating
- Remote television displays from Engine Room, Aft Deck and Flybridge
- Furuno GPS/WAAS Navigator DGPS GP-37
- Raymarine ST 60 Digital Depth display
- Simrad AP20 autopilot
- Sanshin HR-1012 spot light control
- Compass
- Bow and stern thruster control
- Engine synchronizer
- ICOM IC-M602 VHF radio
- ICOM M504 redundant Ram Microphone from Upper Station
- Trace inverter control panel
- Windlass control
- Fuel and water tank monitor
- Fusion radio
- Flir nightvision
- Battery monitor panel
- L shaped settee with table seats six
- Pelco camera DVR system/IP enabled security system

---

## Aft Deck

---

- Aft docking station with transmission and throttle controls, bow and stern thruster controls
- Stainless steel sink
- Miele grill
- 2 Pioneer speakers from main stereo system
- Storage lockers under seating cushions
- Watertight pass through to Lazarette
- Staircase up to Flybridge with sliding hatch cover
- Stairs starboard leading to swim platform
- Hot and cold swim shower
- Power and shore water inlets
- Teak covered swim platform with foldaway swim steps allowing easy access to the water

---

## Lazarette

---

- Teak cabinetry
- Louvered lockers
- Ample lighting
- A/C
- Sink w Granite Countertops
- Foward door to engine room
- Hatch to Aft deck
- Door aft to steering gear and stern thruster

---

## Engine Room

---

- Twin 700hp Northern Lights Luger diesels model 6140AL2
- Strut Keels, protect propellers from grounding
- 24 Volt DC and 110 Volt AC fluorescent lighting
- Sidepower 15hp, 24 Volt bow and stern thrusters, dual propellers and controls at each station
- Hynautic trim tabs
- Engine synchronizer
- Engine alarm system
- 24 volt and 110 volt intake and exhaust fans
- High water/temperature/exhaust alarms
- Simple fuel supply and return manifold
- Fuel sight gauges
- Racor dual crossover fuel filtration system with vacuum gauges on engines and generator
- Oil change system
- Controls at upper and lower stations and stern station

- Dripless shaft seals
- Color coded and labeled piping
- Stainless steel water heaters
- Sea Chest for all seawater inlets. Reduced seawater inlets improves vessel safety
- Air conditioning in engine room and lazarette
- Chilled water reverse cycle air conditioning throughout vessel
- Aquamet 22 propeller shafting
- AGM batteries
- All bilge pumps exhaust to common drain system
- S class Nibral props
- Aquadrive flexible drive coupling system and soft engine mounts reduce vibration
- Aquasignal high exhaust temperature alarm
- Extensive noise insulation
- Stainless steel water heaters

## Electrical System

---

- Glendinning Cablemasters aft, shore power inlets and power cords forward
- AGM no maintenance batteries- 4 for engine start, one for generator start, 4 for ship service and two for thrusters
- Electrical bonding system
- 24V lighting system w/Italian and Danish gold-plated lighting fixtures for reduced metal polishing
- AC/DC distribution panels with magnetic circuit breakers and ammeters in pilot house and backlighting for visibility at night
- AC and DC voltage meters in safety panel over lower helm
- Trace inverter. Monitor/control panel at lower helm
- Battery parallel and on-off switches located outside of engine room for safety
- 110V/220V AC systems with forward and aft shore power connections, and cables

## Deck Equipment and Hull Equipment

---

- Composite Corecell construction with epoxy glass and Kevlar inner and outer hull Skins
- One-half inch thick laminated, tempered, water tight glass windows for safe offshore use
- Watertight pilothouse and rear doors and hatch and door from the Flybridge
- Heavy duty offshore windshield wipers and washers
- Common drain system from bow to stern to eliminate white streaks, black streaks on hull
- Composite molded hardtop
- Aritex davit with hydraulic up/down and horizontal positioning
- FRP swim platform with teak inlay and concealed swim ladder
- Electric windlass with dual chain gypsies and local and helm controls
- Stainless steel Plow and Danforth anchors with 300' chain

- Fresh and seawater washdown forward and aft
- Shore power, water, cable TV and telephone inlets forward and aft
- Portuguese bridge with stowage and foredeck seats
- High bulwarks protect side decks
- Heavy duty oval stainless steel foredeck handrails for safety
- Offshore-type foredeck and pilothouse deck hatches with screens
- Port, starboard and transom boarding gates
- All opening portlights and hatches have screens
- Courtesy lights
- Hot and cold shower at transom
- Kahlenberg air horns, dual trumpet
- Bow pulpit with teak inlay and dual SS heavy duty anchor rollers
- Bronze thru-hulls

## Exclusions

---

Owner's personal property; including tender

## Исключения

---

При продаже яхты исключаются личные вещи владельца.

## Отказ от ответственности

---

Компания предоставляет описание судна или яхты добросовестно, но не может гарантировать точность этой информации, а также не ручается за техническое состояние. Покупатель должен проинструктировать своих агентов или оценщиков исследовать представленную информацию более подробно, по собственному желанию. Продажа судна или яхты, изменение цены или снятие с продажи будет происходить без предварительного уведомления.

# ФОТОГРАФИИ

Salon



Salon



Salon



Salon Wetbar



Galley



Galley



**Galley**



**Galley**



**Breaker Panel**



**Master Stateroom**



**Master Stateroom**



**Master Stateroom**

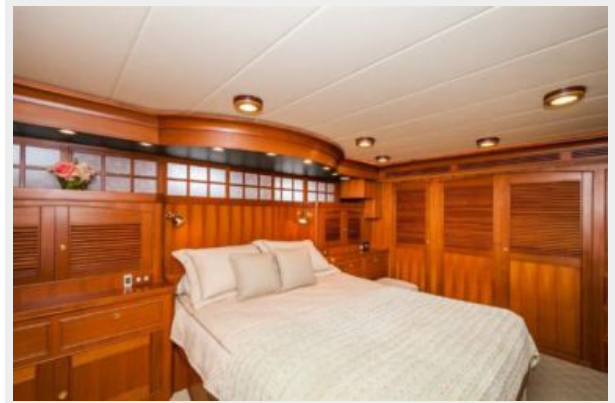




**Master Stateroom**



**Master Stateroom**



**Master Stateroom**



**Master Stateroom TV**



**VIP Stateroom**



**VIP Stateroom**



**VIP Stateroom**



**VIP Stateroom Stateroom**



**Bunk Room and Office**



**Bunk Room and Office**



**Master Head**



**Master Head**



VIP Head



VIP Head



Laundry



Laundry



Lazarette



Engine Hours



**Helm**



**Pilothouse Controls**



**Pilothouse Controls**



**Pilothouse**



**Pilothouse**



**Pilothouse**



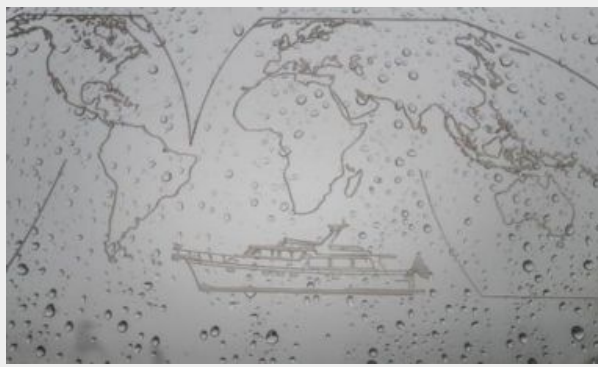
**Pilothouse**



**Ship Monitor**



**Logo**



**Logo**



**Life Raft**



**Cockpit**



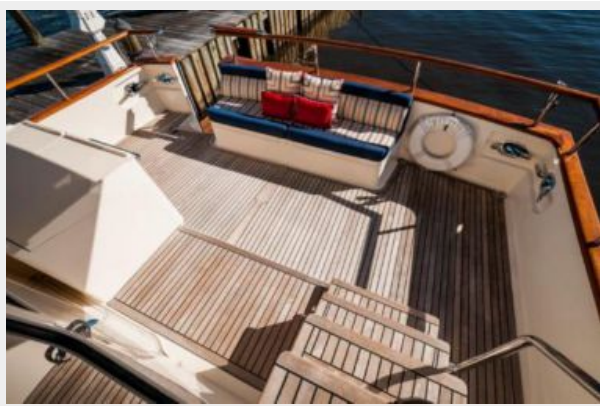
**Cockpit**



**Cockpit Doors Open**



**Cockpit**



**Cockpit Controls and Grill**



**Davit and Dinghy**



**Antennas**



**Bow Seating**



**Bow**



**Bow**



**Companionway**



**Flybridge**



**Flybridge**



**Flybridge Dinette**



**Flybridge Dinette**



**Flybridge Covers**



**Flybridge Coms**



**Flybridge Controls**



**Flybridge Wetbar**





**Engine Room**



**Engine Room**



**Engine Room**



**Generator**



**Port Profile**



**Port Profile**



**Starboard Bow**



**Starboard Profile**



**Starboard Profile**



**Starboard Profile**



**Transom Profile**



**Swim Platform**



## Transom



# КОНТАКТЫ

---

Андрей Шестаков (Andrey Shestakov) – ведущий яхтенный брокер отдела продаж яхт и судов компании Shestakov Yacht Sales Inc. Официальный представитель Shestakov Yacht Sales Inc. для русскоговорящих клиентов в центральном офисе компании в Майами/Форт Лодердейл/Флорида/США.

## Контактная информация

---

Email: **andrey@shestakovyachtsales.com**

Web: [shestakovyachtsales.com](http://shestakovyachtsales.com)

## Телефоны

---

Краснодарский край: **+7(918)465-66-44**

США, Майами, Флорида: **+1(954)274-4435**

## Время работы

---

Понедельник – Суббота: **9:00 - 21:00**  
EDT

Воскресенье: **Закрето**

## Адрес

---



Harbour Towne Marina, 850 NE 3rd St,  
STE 213, Dania, FL 33004