

## GLORY — LAZZARA



**Судостроитель:** LAZZARA

**Год постройки:** 1996

**Модель:** Моторная яхта

**Цена:** ЦЕНА ЯХТЫ ПО ЗАПРОСУ

**Местонахождение:** United States

**Длина общая:** 76' 0" (23.16m)

**Ширина:** 19' 1" (5.82m)

**Мин. осадка:** 4' 5" (1.35m)

Купить **Glory — LAZZARA** а также выбрать подходящую вам яхту из нашего каталога яхт вам поможет опытный яхтенный брокер Андрей Шестаков. На сегодняшний день компания **Shestakov Yacht Sales Inc.** имеет большое количество яхт в собственном списке продаж, а также тесно сотрудничает со всеми крупными яхтенными производителями по всему миру.

Для того чтобы купить яхту **Glory — LAZZARA** а также проконсультироваться по любому вопросу связанному с покупкой, продажей, чартером яхт позвоните по телефону **+7(918)465-66-44**.

# ОГЛАВЛЕНИЕ

---

ОГЛАВЛЕНИЕ	2
ХАРАКТЕРИСТИКИ	5
Основная информация	5
Размеры	5
Размещение	5
Корпус и палуба	5
Информация о двигателе	5
ПОДРОБНОЕ ОПИСАНИЕ	6
Accommodations	6
Electronics and Navigation Equipment	7
Electrical System	7
Deck & Hull	8
Mechanical Equipment and Engine Details	8
Other Features/Additional Equipment	8
Upgrades to GLORY	8
Remarks	9
Исключения	9
Отказ от ответственности	9
ФОТОГРАФИИ	10
Salon	10
Salon	10
Salon	10
Salon	10
Dining	10
Galley	10
Galley	11
Galley	11
Pilothouse	11

Pilothouse	11
Pilothouse	11
Day Head	11
Master Stateroom	12
Master Stateroom	12
Master Bath	12
VIP Stateroom	12
VIP Head	12
Office	12
Guest Stateroom	13
Guest Bath	13
Washer/Dryer	13
Guest Stateroom	13
Engine Room	14
Generator	14
Aft Deck	14
Aft Deck	14
Fly Bridge	14
Fly Bridge Helm	14
Fly Bridge	15
Fly Bridge	15
Bow	15
Windlass	15
Transom	15
<b>КОНТАКТЫ</b>	<b>17</b>
Контактная информация	17
Телефоны	17
Время работы	17
Адрес	17



# ХАРАКТЕРИСТИКИ

## Основная информация

Тип судна: Моторная яхта

Модельный год: 1996

Год постройки: 1996

Страна: United States

Открытая палуба мостика: Да

Кубрик: Да

## Размеры

Длина общая: 76' 0" (23.16m)

Ширина: 19' 1" (5.82m)

Мин. осадка: 4' 5" (1.35m)

## Размещение

Всего кают: 5

## Корпус и палуба

Материал корпуса: Fiberglass

## Информация о двигателе

Двигатели: 2

Производитель: MTU

Модель: 12V183TE

Тип двигателя: Inboard

Тип топлива: Diesel

# ПОДРОБНОЕ ОПИСАНИЕ

## Accommodations

GLORY has three staterooms for owner and guests aft, plus two staterooms forward for crew or guests, all five staterooms have adjoining baths. The Salon of GLORY boasts a U-shaped Grand Salon seating area covered in warm sand leather with storage below each seat cushion and additional storage behind the seat backs and a custom cocktail table. There is an additional air-conditioning unit aft which cools the entire area of the salon, in addition to the standard air conditioning forward. Opposite on the starboard side there is a built-in entertainment center and adjoining sofa for three. Forward of the entertainment center on the starboard side is a custom bar cabinet with wine cooler and bottle storage. Forward of the grand salon is the Dining Area. The dining room table was custom made with an etched glass top and lucite-brass base. Although furnished with four chairs, the table will accommodate six people comfortably. There is custom designed fabric and carpet throughout the main salon, dining area and master stateroom. Triple honeycomb horizontal shades throughout the entire yacht improve insulation and privacy. To starboard when one first enters through the privacy door is the Day Head which is decorated in custom hand painted wall coverings and granite flooring. Forward of the dining area is the separate Galley. The galley has been upgraded with a full size oven, granite countertops and back splashes. The galley is located to port and is equipped with top of the line equipment, and all new 2014. Whirlpool Gold stainless steel, triple door refrigerator Whirlpool Gold stainless steel induction cook top Whirlpool Gold stainless steel oven, all digital Whirlpool Gold stainless steel trash compactor Frigidaire dishwasher TV in galley, new 2014 InSinkErator insta hot water, new 2014 Forward of the galley is the Pilothouse area and to starboard is the dinette with a granite tabletop and storage below all seat cushions. The pilothouse area is finished in Camphor wood accent trim and brown leather. The helm station is located on the port side. There is a special hidden compartment for the autopilot remote control built into the bench seating. Forward of the pilothouse and down the stairs is the Office Area and two Crew/Guest Staterooms. The office area includes a desk, custom upholstered sofa with storage under each seat cushion and imported desk lamp. A computer is also utilized in this area. The staterooms are furnished with custom bedding and designer fabrics each with a separate closet and bath, as well as complete entertainment systems. The forward stateroom has a double berth with en suite head. The starboard crew stateroom (which could also be used as a guest stateroom) has upper and lower berths with en suite head. The Flybridge is accessed from the galley/pilothouse area. The flybridge has a helm seat and companion seat. New EZ2CY enclosure, installed 2014 and opens easily if desired. A very large L-shaped settee with custom designed storage below all seat cushions covered in striped Sunbrella fabric is located to port with a large dining table. To starboard is a custom appliance wet bar, which is equipped with the following: Vitrefrigo refrigerator, new 2014 Virtrifrigo icemaker, new 2014 Jen Air grill, new 2014 Sink with storage below There are (2) Power Rotation Davits port and starboard with remote control to lower dinghy, refurbished in 2014. The Master Stateroom boasts a king size bed, seating areas, and window treatments. Settees are on either side alongside the night tables. There is a complete built-in entertainment center forward of the master bed equipped with TV, AM/FM stereo with CD

player. There is also a large walk-in closet, his and her armoires, dressing table and custom reading lamps. Custom wall coverings made of Baby Ostrich enhance the beauty of this room. The Master Head has a built-in Jacuzzi tub with two shower heads, his/hers sinks with a beautiful granite countertop, granite flooring and additional storage space. The port Guest Stateroom has a queen size berth with drawers under it and is covered in custom bedding and designer fabrics. Ample storage is additionally provided in a built-in drawer unit and also a hanging locker. There is also a complete entertainment system with TV, CD player, radio and cassette player. The en suite bath has a sink, toilet and shower. The starboard Guest Stateroom has upper/lower berths with ample built-in drawer storage, hanging locker as well as a complete entertainment system with TV, CD player, radio and cassette player. The custom bedding and designer fabrics enhance the beauty of this room. The en suite bath has a sink, toilet and stall shower. GLORY features a custom enlarged open Aft Deck. There is a cabinet with sink and storage below. The aft deck seating arrangement has storage below the seat cushions and corian table tops and three adjustable chairs with striped Sunbrella fabric. There is lighting under the hard top and stereo speakers. The reverse transom stairs lead to a teak swim platform with built-in retractable swim ladder and also allows for engine room access. The Engine Room is full width and "stand-up".

## Electronics and Navigation Equipment

---

Garmin radar linked to the screen, flybridge and pilothouse (2) ICOM VHF's, upper and lower stations Furuno Sounder with remote on flybridge (4) Garmin 7215 touch screen GPS's, (2) flybridge, (2) pilothouse Vicon CCTV with three stations Datamarine 3500 Link System Stratos Satellite Communications with Motorola 1000 phone Datamarine Speed and Depth display Datamarine Wind display SEA 225 150-watt SSB Furuno NavTex NX-500 HD SAT receiver, new 2014 Robertson autopilot with handheld remote, and a fixed full remote on Flybridge Chart Nav on Garmin display (2) Search lights – hard top Entertainment center in salon: TV, VCR, CD, cassette, Sat. receiver Isis computer system for all equipment and systems on the boat Stern docking controls with 20' remote

## Electrical System

---

(1) 12V battery charger (2) 24V battery chargers, 60 amp port and starboard Smart Y shore power with adapter Coded wiring system Alarms for engines, reduction gears, bilge and generators, audible and visible Anchor light, 24V Bonded electrical system 100/240 volt shore power inlet, port and starboard with 100' cord Engine room lights Automatic shore power cord reel, 24V Instrument panel lights Isolation transformer Instrument panel lights Interior lighting, 115 and 24V Navigation lights, 24V Master control panel with AC/DC circuit breaker, volt meters and ammeters Receptacles, 120V (2) Search lights with remote control, upper and lower stations Telephone and CATV inlets, port and starboard Hardtop lights and bulwark lights, 24V Vapor proof battery switches Halogen low voltage lighting throughout A second 100 amp shore cord with related wiring was added. Also the ability to boost incoming voltage was added to the existing isolation transformer, as well as to the new unit.

---

## Deck & Hull

---

Hull color is white Storm anchor Marquipt boarding ladder Fire extinguishing system Fenders Flare kit Life jackets and life rings Mooring lines Tool kit Triple water filtration Spot Free wash down filter (1) Kawasaki waverunner Bow deck seating with (2) adjustable lounge pads and large storage below

---

## Mechanical Equipment and Engine Details

---

Twin MTU 12V183TE diesel engines, 1,150 hp each, rebuilt 2005 (2) Onan 20 Kw generators (new 2005) with remote start (2) Oil change pumps Oil changing system, engines and generators ZF gears Central vacuum system Acoustical and thermal insulation in engine room (3) bilge pumps Air conditioning with reverse cycle heat and microprocessor digital controls (1) engine room blowers – 230V Dockside water connection with pressure reducing valves Fire protection system, automatic and manual Fresh water outlet in engine room Fresh water wash-down on foredeck Manifold fuel filters for main engines, 3-way Electronic engine controls-combination clutch and throttle Hour meters, engines and generators Holding tank with access for pump-out Propellers, four blade Seacocks, underwater thru hulls bronze (2) shafts 2-1/2" Aquamet 22 HS Trim tabs, hydraulic, recessed in hull 40-gallon water heater Pressurized water system, 230V Microphor marine toilet system LSR shrouded rudder and stainless steel drive unit Hydraulic stabilizers, dual station, new 2010 Bow thruster, electric 8' Diamond plated sole in engine room Engine room mechanical gauges

---

## Other Features/Additional Equipment

---

Glendinning cable master Kahlenberg air horns (2) G.E. washer and dryers, one set forward, one set aft Sanyo wine chest in salon with 20 – 24 bottles storage capacity Central VAC system

---

## Upgrades to GLORY

---

Complete engine rebuild in 2005 engine time Port 1050 Stbd 1050 Generators replaced new in 2005 Port 1150 Stbd 10150 Upgraded bow thruster from battery powered to a 15 HP AC that works fabulous Complete new gear box for bow thruster Aug 2015 Bottom paint Aug 2015 Trim tabs rebuilt Aug 2015 Upgraded Stabilizers 2009 from air gyros to hydraulic that work great Complete refinish of all vinyl and most all interior surfaces 2014-15 Completely refit galley 2004 with all new SS appliances including induction stove top, triple door refrigerator, dish washer, oven and trash compactor. All counter tops removed and replaced with an upscale granite. New wood flooring and refinishing of all Galley cabinetry. Complete paint job 2014 including changing most every fitting, light fixture, wiring in flybridge, door handles etc. Upgrade TV's in master, port and stbd VIP, salon, galley and captain quarters. Added a TV outlet to flybridge. New HD 7 Trac



Vision satellite receiver. Upgraded most all electronics 2014 in both the pilot house and flybridge to include four Garmin 7215 touch screens an upgraded new version ISIS and screens. Two New VHF ICOM M604. New Garmin radar.

## Remarks

---

GLORY is one of the finest 76' Lazzara wide bodies ever built. Her many upgrades and custom features, including an extra air conditioner in the salon, upgraded bow thruster, upgraded stabilizers, new paint, and constant care by a knowledgeable owner for the last 14 years makes GLORY a great buy!

## Исключения

---

При продаже яхты исключаются личные вещи владельца.

## Отказ от ответственности

---

Компания предоставляет описание судна или яхты добросовестно, но не может гарантировать точность этой информации, а также не ручается за техническое состояние. Покупатель должен проинструктировать своих агентов или оценщиков исследовать представленную информацию более подробно, по собственному желанию. Продажа судна или яхты, изменение цены или снятие с продажи будет происходить без предварительного уведомления.

# ФОТОГРАФИИ

Salon



Salon



Salon



Salon



Dining



Galley



**Galley**



**Galley**



**Pilothouse**



**Pilothouse**



**Pilothouse**



**Day Head**





**Master Stateroom**



**Master Stateroom**



**Master Bath**



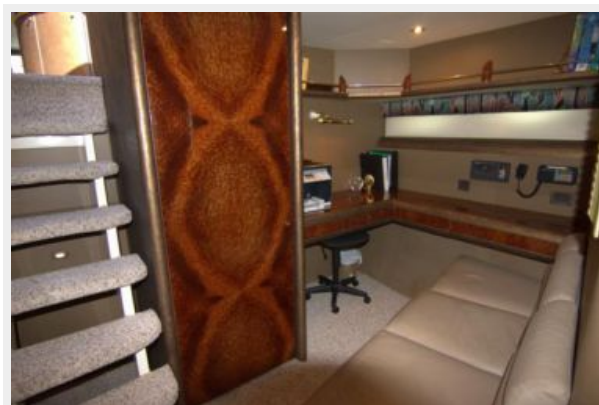
**VIP Stateroom**



**VIP Head**



**Office**



**Guest Stateroom**



**Guest Bath**



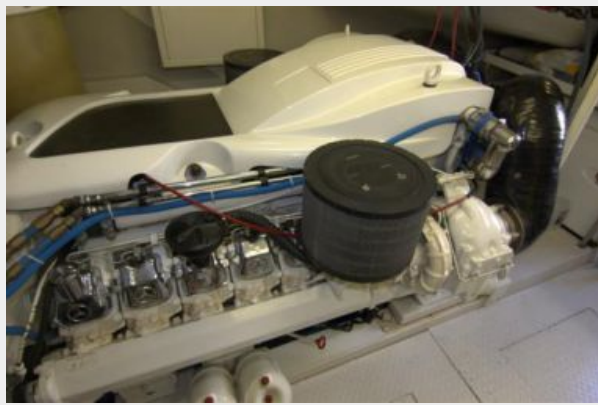
**Washer/Dryer**



**Guest Stateroom**



**Engine Room**



**Generator**



**Aft Deck**



**Aft Deck**



**Fly Bridge**



**Fly Bridge Helm**





**Fly Bridge**



**Fly Bridge**



**Bow**



**Windlass**



**Transom**







# КОНТАКТЫ

---

Андрей Шестаков (Andrey Shestakov) – ведущий яхтенный брокер отдела продаж яхт и судов компании Shestakov Yacht Sales Inc. Официальный представитель Shestakov Yacht Sales Inc. для русскоговорящих клиентов в центральном офисе компании в Майами/Форт Лодердейл/Флорида/США.

## Контактная информация

---

Email: [andrey@shestakovyachtsales.com](mailto:andrey@shestakovyachtsales.com)

Web: [shestakovyachtsales.com](http://shestakovyachtsales.com)

## Телефоны

---

Краснодарский край: **+7(918)465-66-44**

США, Майами, Флорида: **+1(954)274-4435**

## Время работы

---

Понедельник – Суббота: **9:00 - 21:00**  
EDT

Воскресенье: **Закрито**

## Адрес

---



Harbour Towne Marina, 850 NE 3rd St,  
STE 213, Dania, FL 33004