

SEAS THE DAY — AZIMUT



Судостроитель: [AZIMUT](#)

Длина общая: 54' 0" (16.46m)

Год постройки: 2015

Ширина: 16' 2" (4.93m)

Модель: Моторная яхта

Цена: **ЦЕНА ЯХТЫ ПО ЗАПРОСУ**

Местонахождение: United States

Купить **Seas The Day — AZIMUT** а также выбрать подходящую вам яхту из нашего каталога яхт вам поможет опытный яхтенный брокер Андрей Шестаков. На сегодняшний день компания **Shestakov Yacht Sales Inc.** имеет большое количество яхт в собственном списке продаж, а также тесно сотрудничает со всеми крупными яхтенными производителями по всему миру.

Для того чтобы купить яхту **Seas The Day — AZIMUT** а также проконсультироваться по любому вопросу связанному с покупкой, продажей, чартером яхт позвоните по телефону **+7(918)465-66-44**.

ОГЛАВЛЕНИЕ

ОГЛАВЛЕНИЕ	2
ХАРАКТЕРИСТИКИ	3
Обзор	3
Основная информация	3
Размеры	3
Скорость, вместимость и масса	3
Размещение	3
Корпус и палуба	3
Информация о двигателе	4
ПОДРОБНОЕ ОПИСАНИЕ	5
54 Azimut	5
Исключения	10
Отказ от ответственности	10
ФОТОГРАФИИ	11
КОНТАКТЫ	20
Контактная информация	20
Телефоны	20
Время работы	20
Адрес	20

ХАРАКТЕРИСТИКИ

Обзор

"Seas The Day" is a beautiful 2015 54' Azimut Flybridge that shows "as new" and features a 3 Stateroom / 2 Head layout with Crew Quarters. She has the latest Raymarine Electronics, 180 Hours on D11 Volvos w/ 5 year Warranties, Seakeeper Gyro Stabilizer, Xenta Joystick Controllers, Custom Handcraft Mattresses and a 325 Williams Jet Tender.

Основная информация

Тип судна: Моторная яхта

Подкатегория: Flybridge

Модельный год: 2015

Год постройки: 2015

Страна: United States

Размеры

Длина общая: 54' 0" (16.46m)

Ширина: 16' 2" (4.93m)

Скорость, вместимость и масса

Вместимость воды: 156 Gallons

Объем топливного бака: 618 Gallons

Размещение

Всего кают: 3

Корпус и палуба

Материал корпуса: Fiberglass

Информация о двигателе

Двигатели: 2

Производитель: Volvo

Модель: D11

Тип двигателя: Inboard

Тип топлива: Diesel

ПОДРОБНОЕ ОПИСАНИЕ

54 Azimut

Notable Features

- Twin Volvo D11 V-Drives (725 HP Each)
- Seakeeper Gyro Stabilizer
- Xtena Joystick Control
- Bow Thruster
- Stern Thruster
- Teak Deck on Flybridge
- Teak Side Decks and Cockpit
- Washer/Dryer in Master Stateroom
- Underwater Lights
- Marquipt Boarding Ladder
- Salon Ice maker
- Double Racor Filters for Each Engine
- Cockpit Teak Table
- Glendenning Cable Master
- Cockpit Refrigerator
- Flybridge Refrigerator

Fly Bridge

- The large flybridge can only be accessed from the outside (steps from cockpit, port side).
- GRP cockpit steps with 6 steps (Teak)
- Teak Flybridge Deck
- Waterproof access hatch in aluminum and Plexiglass
- Smoked Plexiglass windshield with stainless steel and aluminum frame
- Stainless steel handrails
- Sunbathing area on bow
- Helm station: fixed seat for 1 person, adjustable steering wheel control (wheel with four spokes, painted white)
- L-shaped sofa joined with stern sunbathing area
- Teak table with central leg in stainless steel
- Sink with cold water
- Kenyon Electric Grill
- Stainless steel lights
- Fixed Convertible Hard Top with Manual Soft Top insert
- JL Audio speakers
- Fusion Stereo Head Unit
- Samsung Removable TV

Bow

- Anchor peak with drainage and fenders compartment
- Delta anchor
- Calibrated anchor chain bow roller
- Winch 1700 W
- Two cleats in stainless steel
- Large Sunbathing area with convertible Lounges
- Chain washdown

Walkways

- Fuel fillers: 2 D. 88 mm
- Fresh water filler
- Black water discharge outlet
- 2 stainless steel cleats
- Non-slip floor
- Handrails on fly bridge
- Stainless steel and high-strength PVC rub rail

Cockpit

- Access to the cockpit from a stainless steel and Plexiglass gate
- MarQuipt boarding stairs via two wing doors
- Large stainless Steel Sliding Glass Door
- Large C Shaped Aft Dinette with Teak Table
- Cushions for cockpit bench
- Engine compartment access from cockpit floor (Teak)
- Crew cabin access from the cockpit bench
- Curved handrail on the stern platform
- Handrail for the fly bridge access staircase
- Handles on cockpit bench arms
- Lighting: spots on the ceiling
- Hot and cold fresh water shower

Platform

- Hydraulic Lift
- Teak Deck on Lift
- Removable Teak Chalks
- Lights on the stern bathing platform
- Williams 325 Jet Tender w/ under 10 original running hours
- Telescopic Stainless Steel Swim Ladder

Layout

Salon & Dinette

- Decapé oak wood furniture and floor
- Wrap around port side Sofa with Single Pull Out Berth
- Retractable Salon TV, Stbd Side
- Bose Surround Sound throughout Salon
- Access to the lower deck via centerline staircase
- Curtains for windows, aft and sliding blind for salon door
- Rectangular table in dinette with center removable insert
- Storage under the dinette sofa.

Galley

- Oak Floor
- Miele3 burner ceramic-glass electric cook top with spill rail
- Air extractor in ceiling with active carbon filters
- Miele Microwave/ Convection Oven Combo
- Electric window

Master Cabin

- Full Beam Amidships Master
- Custom Handcraft Mattress
- 1 double bed, placed diagonally
- 2 reading lights
- Oak wood headboard, with storage behind
- Large Portholes Port and Stbd
- Vanity table with seats on Port side
- Storage Under Berth
- Deck hatch (emergency exit above the bed)
- Bulkhead covering in fabric and wood paneling (oak)
- Large Closet with Safe
- TV system

Master Head Compartment

- Entrance from master cabin
- TECMA Head
- Chrome-plated mixer tap
- Separate shower with flat door
- Shower column and seat in metallic brown ABS
- Cabinet with 2 sliding doors above washbasin top
- Lighting: down light on cabinet and spots in the shower
- 1 large porthole
- Decapé oak floor with solid wood shower grating

VIP cabin

- Double bed
- Custom Handcraft Mattress
- Fixed oak headboard
- 2 reading lights
- Direct access to head compartment
- Carpeted floor
- Large Portholes Port and Stbd
- Deck hatch

VIP Head/ Day Head

- Located aft of the VIP cabin, on port side
- Entrance from the VIP or from Hallway
- TECMA
- Round shower cubicle (3 doors)
- Lighting: down light on cabinet and spots in the shower
- Large Round Porthole
- Decapé oak floor with solid wood grating

Guest Cabin

- On starboard side
- 2 single beds Headboard with mirror and oak panels
- Custom Handcraft Mattresses
- 1 night table between the two beds (2 opening compartments)
- 1 wardrobe with hanging rail and shelves
- Large Round Porthole
- Carpeted floor
- 2 reading lights

Helm Electronics

- Raymarine G-Series Glass Display with Keypad
- Volvo Penta Controls with Volvo Engine Displays
- Xenta Joystick Controls linking bow and stern thruster and gears
- Dynamic Positioning System
- Jabsco Searchlight Controls
- Bennett Trim Tabs
- Quick Chain Counter Windlass Controller
- Raymarine i50 Depth Display
- Raymarine p70R Autopilot w/ control knob
- Ray 260 Radio VHF

Flybridge Electronics

- Raymarine G-Series Glass Display with Keypad
- Volvo Penta Controls with Volvo Engine Displays
- Xenta Joystick Controls linking bow and stern thruster and gears
- Dynamic Positioning System
- Jabsco Searchlight Controls
- Fusion MS-NRX200i Dash Controller
- Bennett Trim Tabs
- Quick Chain Counter Windlass Controller
- Raymarinei50 Depth Display
- Raymarine p70R Autopilot w/ control knob
- Ray 260 Radio VHF
- Kenyon Grill
- Fusion MA-AV700i Head Unit
- JL Audio Speakers
- Removable Samsung TV

Build Details

- The structural project of the hull has been approved by RINA. This means a further guarantee of the quality of the structure and this is also confirmed by the use of state-of-the-art techniques and materials. Construction techniques and materials have been researched in depth to find the best possible combination of quality, weight and rigidity. The hull, main deck, inner-liners and structures have a sandwich structure with high-performance PVC core, to achieve maximum rigidity and impact resistance. These parts are laminated using infusion techniques, reducing the weight and increasing the quality level.
- Vinylester resins are used for the lamination of the hull. This kind of resin guarantees a excellent resistance to osmosis. On the strength of this, Azimut is able to offer a 5-year warranty against osmosis. High quality isophthalic resin is used for the whole remaining lamination process.
- Structural bulkheads have a sandwich structure with PVC core. The use of “next-generation” structural adhesives has been one of the key points in the process. The resulting bonding techniques and structural concepts have been checked by using an FEA model analysis. This calculation model, normally used by aeronautical and automotive companies, makes it possible to simulate the behaviour of the boat under the most severe stress conditions, testing the structure in every single detail.
- The frame of the superstructure has been reinforced by carbon fibres in order to increase the rigidity and reduce weight.
- The planing hull has a 12° fore deadrise and 21° midship deadrise

Исключения

При продаже яхты исключаются личные вещи владельца.

Отказ от ответственности

Компания предоставляет описание судна или яхты добросовестно, но не может гарантировать точность этой информации, а также не ручается за техническое состояние. Покупатель должен проинструктировать своих агентов или оценщиков исследовать представленную информацию более подробно, по собственному желанию. Продажа судна или яхты, изменение цены или снятие с продажи будет происходить без предварительного уведомления.

ФОТОГРАФИИ



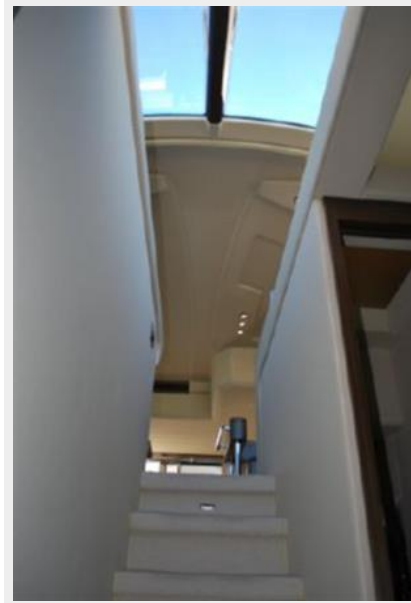




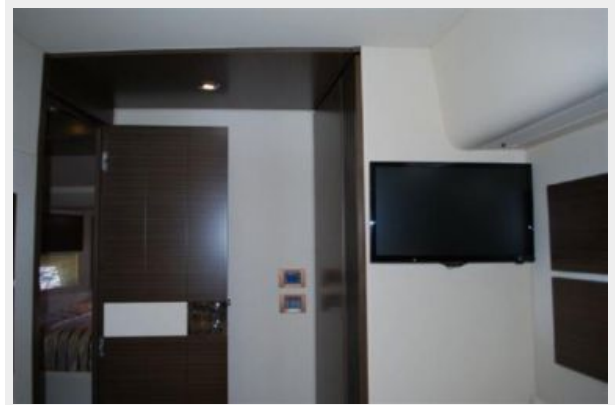












КОНТАКТЫ

Андрей Шестаков (Andrey Shestakov) – ведущий яхтенный брокер отдела продаж яхт и судов компании Shestakov Yacht Sales Inc. Официальный представитель Shestakov Yacht Sales Inc. для русскоговорящих клиентов в центральном офисе компании в Майами/Форт Лодердейл/Флорида/США.

Контактная информация

Email: andrey@shestakovyachtsales.com

Web: shestakovyachtsales.com

Телефоны

Краснодарский край: **+7(918)465-66-44**

США, Майами, Флорида: **+1(954)274-4435**

Время работы

Понедельник – Суббота: **9:00 - 21:00**
EDT

Воскресенье: **Закрито**

Адрес



Harbour Towne Marina, 850 NE 3rd St,
STE 213, Dania, FL 33004