

MISS MEL II — TIARA



Builder: TIARA

Year Built: 2014

Model: Cruiser

Price: PRICE ON APPLICATION

Location: United States

LOA: 58' 0" (17.68m)

Beam: 15' 10" (4.83m)

Min Draft: 3' 6" (1.07m)

Cruise Speed: 29 Kts. (33 MPH)

Max Speed: 34 Kts. (39 MPH)

Our experienced yacht broker, Andrey Shestakov, will help you choose and buy a yacht that best suits your needs **Miss Mel II — TIARA** from our catalogue. Presently, at Shestakov Yacht Sales Inc., we have a wide variety of yachts available on our sale's list. We also work in close contact with all the big yacht manufacturers from all over the world.

If you would like to buy a yacht **Miss Mel II — TIARA** or would like help answering any questions concerning purchasing, selling or chartering a yacht, please call **+1(954)274-4435**

TABLE OF CONTENTS

TABLE OF CONTENTS	2
SPECIFICATIONS	5
Overview	5
Basic Information	5
Dimensions	5
Speed, Capacities and Weight	5
Accommodations	6
Hull and Deck Information	6
Engine Information	6
DETAILED INFORMATION	7
Overview	7
Walk Through	7
Salon	7
Galley	8
Master Stateroom	8
Master Head	8
Forward VIP Stateroom	9
Forward Starboard Guest Stateroom	9
Guest Head	9
Helm	10
Electronics	10
Electrical System	11
Mechanical Equipment	11
Engine Room	11
Aft Deck	12
Deck	12
Hull	13
Exclusions	13

Disclaimer	13
PHOTOS	14
Salon	14
Salon	14
Salon	14
Salon	14
Custom Chair TV	15
Stereo System	15
Galley	15
Galley	15
Wine Cooler	16
Galley Sink	16
Master Stateroom	16
Master Stateroom	16
Master Stateroom TV	17
Master Stateroom Hanging Locker	17
Master Stateroom	17
Master Stateroom Safe	17
Washer / Drywer	18
Master Head	18
Master Shower	18
Forward VIP Guest Stateroom	18
Guest Head	19
Forward VIP Guest Stateroom	19
Guest Stateroom	19
Helm	19
Electronics	20
Helm	20
Electronics - GPS Plotter	20

Electronics - Tiara System	20
Radar /TV Antennas	20
Mechanical / Water Maker	20
Bow Pulpit	21
Bow Pulpit	21
Anchor Locker	21
Bow Cushions	21
Bow	22
Cockpit	22
Cockpit Profile Wet Bar	22
Cockpit Grill Profile	22
Shore Power	23
Transom Shower	23
Bow Profile	23
Walkway	23
Profile	24
Profile	24
CONTACTS	25
Contact details	25
Telephones	25
Office hours	25
Address	25

SPECIFICATIONS

Overview

Exceptional Vessel with Many Up-Grades and Captain Maintained. This is a Turn Key Vessel and will Give the New Owner Comfort and Peace of Mind that this Vessel has had the BEST of Care.

TRANSFERABLE 4 YEAR WARRANTY* ALL TRADES CONSIDERED *

Basic Information

Category: Cruiser

Sub Category: Express

Model Year: 2014

Year Built: 2014

Country: United States

Cockpit: Yes

Dimensions

LOA: 58' 0" (17.68m)

Beam: 15' 10" (4.83m)

Min Draft: 3' 6" (1.07m)

Speed, Capacities and Weight

Cruise Speed: 29 Kts. (33 MPH)

Cruise Speed RPM: 3195 Kts.

Cruise Speed Range: 340

Max Speed: 34 Kts. (39 MPH)

Max Speed RPM: 3563 Kts.

Displacement: 43500 Pounds

Water Capacity: 200 Gallons

Holding Tank: 86 Gallons

Fuel Capacity: 650 Gallons

Accommodations

Total Cabins: 3

Total Heads: 2

Hull and Deck Information

Hull Material: Fiberglass

Hull Configuration: Modified Deep Vee

Engine Information

Engines: 3

Manufacturer: Volvo

Model: IPS 600

Engine Type: Inboard

Fuel Type: Diesel

DETAILED INFORMATION

Overview

This 5800 Tiara is a MUST SEE!!! A incredible interior and exterior space is designed for comfortable cruising and relaxing. No expense has been spared on this yacht by this knowledgeable owner. "Miss Mel" is equipped with Dual Redundancies and all the desirable options, including a Water Maker and Sat TV.

Transferrable Extended Warranty Until October 2018!!!

You will not find a better equipped Tiara 5800 Sovran anywhere in the world or one in better condition.

Walk Through

The Tiara 5800 Sovran is the flagship of the Tiara line from 2007 to 2015.

This is one of the last built, the knowledgeable owner has serviced the vessel with an open checkbook. The three stateroom layout provides sleeping for up to 7 people, in air conditioned comfort. The large Aft deck with the custom sun shade and side curtains increases the livability and cruising comfort of this outstanding up-scale yacht.

Don't Let This One Get Away.... Call for a Private Showing.

Salon

The Salon is Large and Open with a L-Shaped Settee on the Starboard Side

- Stainless sliding glass entry doors
- Custom L-shaped sofa ultra leather on starboard
- Custom salon table with storage
- Window shades
- Teak flooring
- Custom barrel chair with ottoman
- TV console with retractable TV
- Stereo entertainment system
- Reading lights
- SAT TV
- Salon Storage
- Overhead indirect lighting
- Accent lighting

Galley

- Sub- Zero refrigerator and freezer drawers
- Microwave convection oven
- Dual under mount stainless sinks with covers
- Quartz counter tops
- Storage drawers below counter top
- Teak flooring
- Cellar storage under galley floor
- 110V outlets
- Accent lighting
- Utility storage drawers
- Cherry wood cabinetry
- Below counter storage cabinet
- Indirect lighting
- Three burner stove with vent system
- Natural lighting
- Safety hand rail

Master Stateroom

Full Beam

- Double berth with custom deluxe mattress
- Bed cover and pillows package
- Portside dresser
- Safe
- Overhead lighting
- Cherry wood privacy door
- Indirect overhead lighting and reading lights
- Pivot mounted SAT TV & DVD player
- Cedar lined hang up locker
- Large hullside windows with blinds
- Night tables with storage
- Large gas spring activated storage compartment under berth
- Stackable washer/dryer with storage
- Stereo System

Master Head

- Vanity with quartz counter top/porcelain sink
- Lighted medicine cabinet with mirror
- Shower stall with glass door and teak seat
- Vacuflush head with holding tank
- Port light with privacy shade
- Indirect lighting
- Lower cabinet storage
- Exhaust fan
- Privacy door
- Linen storage
- Ceramic tile floor
- AC Vent
- 110V outlet

Forward VIP Stateroom

- Queen pedestal berth with storage
- Large cedar lined hanging locker
- Guest head entry door
- Leather port light shades
- Upper hullside storage
- Privacy door
- Teak flooring
- Reading lights
- TV/DVD player
- AC system

Forward Starboard Guest Stateroom

- Bunk berths with storage
- TV
- Privacy door
- Locker storage

Guest Head

- Large shower stall with door / molded in seat
- Opening port light
- Indirect lighting
- Quartz counter top with porcelain vessel sink
- Lighted medicine cabinet with mirror

- Under vanity storage
- Ceramic tile flooring
- Vacuflush head
- Privacy door
- Exhaust fan
- AC vent

Helm

- Leather wrapped tilt captain's wheel
- Starboard electric window
- Glove box storage
- (2) Stidd power helm seats with arm rest
- Sky galley with Vitrifrigo refrigerator drawer
- Garmin glass cockpit navigation
- Wine cooler
- Denon stereo system
- Volvo engine display/controls/joystick
- Teak flooring
- Drink holders
- Indirect lighting
- Window tinting
- Windshield cover
- Night cockpit lighting

Electronics

- 2 Garmin 7150 navigation displays
- Garmin open array radar system
- Garmin depth finder system
- Garmin autopilot system
- Garmin GHS 10 VHF
- TracVision HD7 SAT TV system
- Stereo system with sound bar and blue ray player
- Tiara command station touchscreen display
- Ritchie Globemaster compass
- Cable TV and phone outlets
- Volvo electronic controls and steering system
- Volvo keyless ignition system
- SAT weather
- AIS
- WiFi internet booster antenna system

- SeaView Global PMA-M2 antenna mount

Electrical System

- Tiara custom electrical distribution panel
- 17kW generator
- Glendinning 50 Amp electrical shore power system
- 2-30 Amp shore power cords
- Cable TV hook-up
- (2) Victron battery chargers 100 amp
- Battery switches
- Battery bank system
- Battery parallel system
- Electrical bonding system
- ACR RCL 100 remote spotlight
- High capacity alternators
- Air horn system
- 3 Telephone outlets
- Central vacuum system
- 2 Hot water heaters
- 120V Electrical outlets
- 12V lighting systems

Mechanical Equipment

- Volvo Penta trim tab system
- Power steering system
- Windlass anchor system with forward foot switches
- Chain rode with fresh and raw water washdown
- Waste macerator system with pump-out
- Oil change system
- Glendinning cable master systems
- Fresh water system with updated pressure water system- 110V
- 12V Pressure water back-up system
- Spectra water maker 400

Engine Room

- Engine room lighting
- Engine room sound insulation
- Engine strainers

- Air conditioning strainer
- Oil change system
- Engine room acoustical insulation
- Generator with sound shield
- Automatic fire suppression system
- Engine room blowers
- Fuel filters
- Raw water intake strainers
- Bilge pumps
- Glendinning
- Engine room blower system

Aft Deck

- Engine room access
- Transom door
- Sun shade
- High gloss cockpit teak table with hi-lo actuator
- Hydraulic swim platform with ladder
- Molded in Aft deck steps
- Large Aft deck seating with storage
- Courtesy lights
- Custom sun shade
- Starboard bar with grill and refrigerator
- Portside dry sink with Aft docking joystick and ice maker
- Custom table cover
- Teak decking
- Removable boarding steps
- Cockpit seat covers
- Aft storage trunk

Deck

- Tiara custom non-skid surface
- 316L stainless steel bow railing
- Forward anchor storage locker
- Hand rails
- Custom bow sun pad with cup holders and cover
- Pop-up cleats
- 3 forward deck hatches with screens and sun shade
- Molded-in bow pulpit with stainless steel roller system

Hull

- Imron hull paint Rolls Royce Titanium
- Hydraulic swim platform with teak decking
- Single piece stainless bow rail
- Bronze seacocks
- Transom shower
- Composite fuel tank
- Molding-in recessed port lights
- Custom window tinting- high impact
- Shadow caster underwater lights
- Wood and foam core stringers
- Anti-fouling bottom paint
- Custom Aft sun shade with drop down curtains
- Bow anchor system
- Hardtop with mast
- Raw and fresh water washdown for anchor
- Automatic bilge pumps

Exclusions

Owner's personal belongings.

Disclaimer

The Company offers the details of this vessel or yacht in good faith but cannot guarantee or warrant the accuracy of this information nor warrant the condition of the vessel. A buyer should instruct his representatives, agents, or his surveyors, to investigate such details as the buyer desires validated. This vessel or yacht is offered subject to prior sale, price change, or withdrawal without notice.

PHOTOS

Salon



Salon



Salon



Salon



Custom Chair TV



Stereo System



Galley



Galley



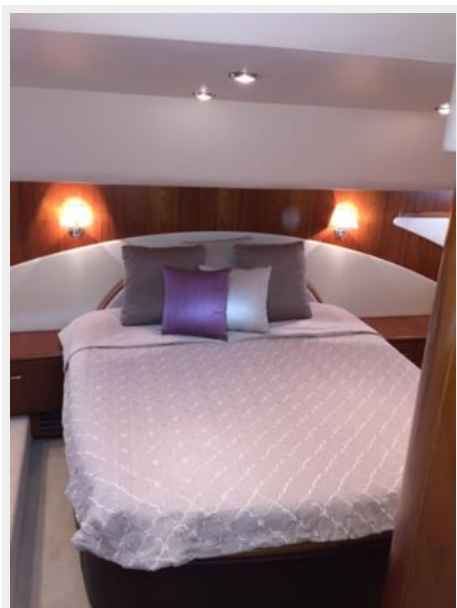
Galley Sink



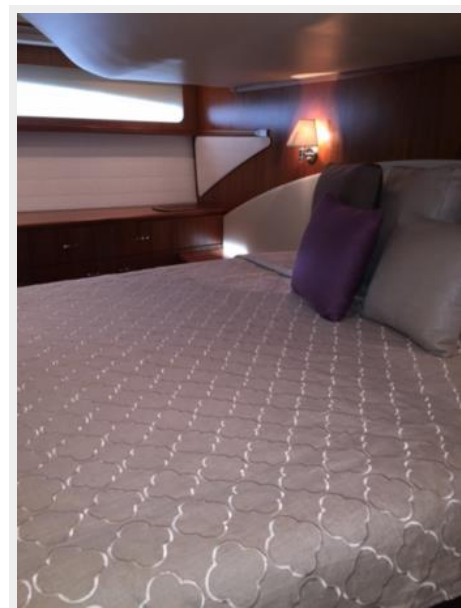
Wine Cooler



Master Stateroom



Master Stateroom



Master Stateroom TV



Master Stateroom Hanging Locker



Master Stateroom



Master Stateroom Safe



Washer / Drywer



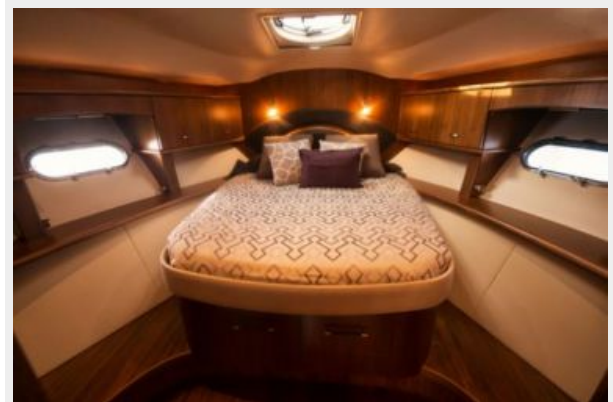
Master Head



Master Shower



Forward VIP Guest Stateroom



Forward VIP Guest Stateroom



Guest Head



Guest Stateroom



Helm



Electronics



Helm



Electronics - GPS Plotter



Electronics - Tiara System



Radar /TV Antennas



Mechanical / Water Maker



Bow Pulpit



Bow Pulpit



Anchor Locker



Bow Cushions



Bow



Cockpit



Cockpit Wet Bar



Cockpit Grill



Shore Power



Transom Shower



Bow Profile



Walkway



Profile



Profile



CONTACTS

Andrey Shestakov, leading yacht broker of the sales department of Shestakov Yacht Sales Inc. Shestakov Yacht Sales Inc., the official representative of the Miami/Fort Lauderdale FL headquarters.

Contact details

Email: **andrey@shestakovyachtsales.com**

Web: shestakovyachtsales.com/en/

Telephones

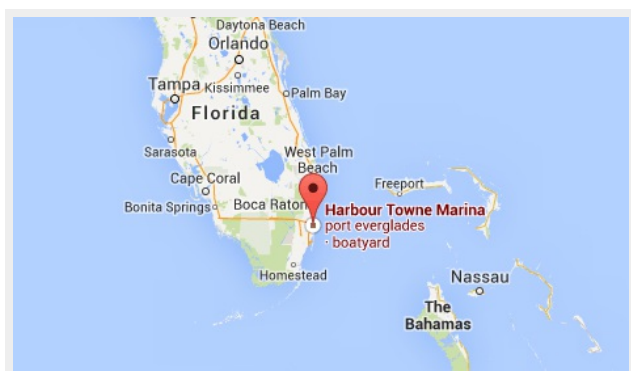
USA: **+1(954)274-4435**

Office hours

Monday – Saturday: **9:00 - 21:00 EDT**

Sunday: **closed**

Address



Harbour Towne Marina, 850 NE 3rd St,
STE 213, Dania, FL 33004