

TRANQUILITY — DONZI



Builder: DONZI

Year Built: 1996

Model: Sport Fisherman

Price: PRICE ON APPLICATION

Location: United States

LOA: 65' 0" (19.81m)

Beam: 18' 7" (5.66m)

Cruise Speed: 25 Kts. (29 MPH)

Max Speed: 31 Kts. (36 MPH)

Our experienced yacht broker, Andrey Shestakov, will help you choose and buy a yacht that best suits your needs **Tranquility — DONZI** from our catalogue. Presently, at Shestakov Yacht Sales Inc., we have a wide variety of yachts available on our sale's list. We also work in close contact with all the big yacht manufacturers from all over the world.

If you would like to buy a yacht **Tranquility — DONZI** or would like help answering any questions concerning purchasing, selling or chartering a yacht, please call **+1(954)274-4435**

TABLE OF CONTENTS

TABLE OF CONTENTS	2
SPECIFICATIONS	4
Overview	4
Basic Information	4
Dimensions	4
Speed, Capacities and Weight	4
Accommodations	4
Hull and Deck Information	4
Engine Information	5
DETAILED INFORMATION	6
Accommodations	6
Main Salon	7
Galley	7
Master Stateroom	7
VIP Guest Stateroom	8
Crew Quarters	9
Enclosed Flybridge/Helm	9
Cockpit	10
Fishing Equipment	10
Deck Equipment	11
Additional Equipment	11
Engine Room & Mechanical	12
Refit & Upgrades, 2014/15	12
Exclusions	13
Disclaimer	13
PHOTOS	14
CONTACTS	27
Contact details	27

Telephones	27
Office hours	27
Address	27

SPECIFICATIONS

Overview

"Tranquility", 65' Donzi Sportfish Convertible had a complete refit in 2014 with new exterior paint, new bottom job, new interior, new galley appliances, new rocket launcher, new audio/visual equipment & much more! Enclosed bridge with new tower!

Seller motivated and will consider center console, exotic car in on trade.

Basic Information

Category: Sport Fisherman

Model Year: 1996

Year Built: 1996

Country: United States

Dimensions

LOA: 65' 0" (19.81m)

Beam: 18' 7" (5.66m)

Speed, Capacities and Weight

Cruise Speed: 25 Kts. (29 MPH)

Max Speed: 31 Kts. (36 MPH)

Water Capacity: 350 Gallons

Fuel Capacity: 2100 Gallons

Accommodations

Total Cabins: 3

Total Heads: 3

Hull and Deck Information

Hull Material: Fiberglass

Engine Information

Engines: 2

Manufacturer: Detroit Diesel

Model: 16V92'S

Engine Type: Inboard

Fuel Type: Diesel

DETAILED INFORMATION

Accommodations

Complete new interior was done in 2014/15 to include new carpeting, furnishings, upholstery, wall coverings, headliner, window treatments, lighting, fixtures & hardware, soft goods, galley appliances, granite countertops, audio/ visual, new A/C system, etc.

The main salon offers an L-shaped seating arrangement to starboard with custom end tables and coffee table. The master ship's service electrical panel is located to port as you enter the doorway. Above it, you'll find the entertainment system's components. Moving provides access to the wheelhouse and upper salon. All furniture is built-in and the entertainment systems are concealed behind custom cabinetry. The galley is located on the same level as the salon. A low profile counter conceals "dual" under counter refrigeration. Two bar stools are fixed in place at the counter and compliment the dinette seating arrangement located to starboard with table and four chairs. All galley counter surfaces are imported granite.

Living quarters are accessed down four steps. Immediately to your left is a doorway that takes you to the crew cabin. Continue forward through the companionway. The owner's cabin is located on the port side mid-ship behind a second door. A full size washer/dryer is located off this companionway providing easy service for laundry. The IP cabin is located all the way forward. The owner's cabin and VIP cabin feature centerline positioned king and queen size beds as well as ensuite heads with full shower.

The wheelhouse is enclosed and features a full command station, elevated lounge seating area to starboard with 260 degree viewing. A mini galley wet bar, including refrigerator and ice maker, sits directly across to port with a Sony 20" TV. There is an electrically controlled, heated, deluxe leather Recaro helm chair plus a forward facing navigation bench seat located to starboard. This seat has a full entertainment system custom fit with special carpentry and fax/printer/copy machine concealed behind built-in cabinetry. The extended aft bridge deck features control station with steering clutch & throttle. A custom-built rear facing bench seat is positioned to starboard with storage below a purpose built ladder provides exit to the cockpit below through a safety hatch in-deck.

A designer coordinated interior décor features fiddle-back maple hardwood finish throughout, select high quality leathers, granite counters, top grade fabrics, and a custom lighting plan to create a casual atmosphere for entertaining or recreational activities.

In 2015/15, "Tranquility" went through a very comprehensive refit. The exterior received a complete Allcraft white paint mirror finish with black window mask around the house and enclosed flybridge. The custom teak toe rail is varnished under the bow rail.

All non-skid was repainted and the cockpit sole refinished with non-skid. The fighting chair was refinished and a new rocket launcher installed. As you enter through the salon doors, the new interior décor jumps out as an obvious redo. From new headliner to new carpeting, along with

every light, handles and knobs, window treatments, artwork, etc!

Main Salon

- Bulkhead window; features commissioned etched mural - edge & back lighting for display
- Custom built-in art display w/bronze marlin (2014)
- High grade plush carpet (2014)
- Ship's alarm system monitor panel; visual & audible
- L-shaped sofa, seating for (6) w/storage below
- Wet bar with icemaker & custom glass/bottle storage
- Sony top-line receiver with storage and bookcase
- Sony 48" TV on hi/lo lift
- Custom security alarm touch control panel
- Thermostat for climate control
- Special lighting; indirect and direct with programmable settings
- Master ship's service electrical control panel
- Alarm system that monitors high water in (8) areas of bilge
- U-line refrigerated wine locker
- New granite countertops

Galley

- Gagganau retractable exhaust ventilator
- Kitchen Aide 4-burner cooktop
- Meile oven with rotisserie
- Stainless steel double sink with Delta faucet/disposal
- Custom built drawer storage for flatware, dishes, cups, glasses, etc.
- Custom built cabinetry & pantry storage areas
- Top grade floor covering
- All new chrome latches

Dinette:

- Custom built table with exotic wood inlays to seat 4 to 5
- (4) Custom dining chairs
- Galley counter hosts (2) bar stools, to provide informal breakfast/lunch service station

Master Stateroom

- Maple hardwood finishes
- High grade plush carpet
- King size walk-around bed w/custom spread & shams

- Vanity seating area with built-in drawer storage
- Sony entertainment system with receiver/CD/cassette & speakers
- Sony 27" TV
- Stainless steel porthole with screen
- (3) Cedar-lined closets
- Custom beveled edge mirrors; floor to ceiling
- Custom built-in furniture with drawer storage
- Custom built bedside end tables
- Safe
- Thermostat for climate control
- Telephone/Intercom

Master Head:

- Full size shower
- MicroFlush fresh water toilet
- Bathroom sink with vanity
- Multiple sets of bathroom towels
- Designer selected wall coverings, marble counter surface and plush carpet
- Telephone/intercom
- Dual medicine cabinet
- Under vanity storage
- Linen closet/locker
- Portholes
- Top brand gold plated fixtures, faucets, & towel holders

VIP Guest Stateroom

- Queen size walk-around bed
- High grade plush carpet
- Sony Entertainment system with receiver/CD/cassette & speakers
- Magnavox 13" TV with built-in VCR
- Cedar lined closet
- Built-in drawer storage & cabinetry
- Thermostat for climate control
- Stainless steel porthole with screen
- Lewmar Escape hatch
- Designer bedspread & pillow shams
- Full set of custom fit bed linens and sheets
- Golf club storage provided in Lazzarette
- Ensuite head
- Telephone/Intercom

VIP Head:

- Full size shower
- MicroFlush Fresh water toilet
- Bathroom sink with vanity
- Medicine cabinet
- Under vanity storage
- Linen locker
- Designer selected wall coverings, marble counter surfaces & ceramic tile flooring
- Multiple sets of bathroom towels
- Top brand chrome/gold fixtures

Lower Companionway:

- Located down (4) steps from main salon on starboard side
- Stainless steel portholes
- Top load washer and front load dryer; full size stack unit
- High grade plush carpet
- Custom built book storage & tailor big game rod storage locker
- Access to dry storage areas under deck

Crew Quarters

- Single berth 6'7" long
- Access to pump room
- AM/FM Stereo with speakers
- 13" TV
- Direct & indirect lighting
- Designer bedspreads & pillow shams
- Full set of bed linens
- Refrigerator
- Telephone/Intercom (also in engine room)

Crew Head:

- Accessed from cockpit through engine room or crew quarters
- Sea Land #806 fresh water toilet
- Shower
- Vanity with pull out sink
- Thermostat for climate control

Enclosed Flybridge/Helm

- Vicon monitor: dual video camera/engine room display
- Recaro Captain's chair; electric controlled/heated/leather covering
- Bench seating starboard; forward facing

- Ship's alarm system monitor panel; visual & audible
- Special Halon fire extinguishing system; automatic
- High quality plush carpeting
- Wet bar area with open sink; spacious counter & granite counter tops
- Under counter KitchenAir refrigerator
- Lounge seating area to starboard
- Hi-low coffee table with custom exotic wood inlay mounted on stainless pedestal
- Telephone/intercom
- Lewmar Escape hatch
- Custom installation of all electronic systems
- Top grade fabric coverings used on bench/lounge seating
- Stereo system
- Sony 13" TV

Cockpit

- Transom fishbox stainless liner, insulated with macerator pump
- Large capacity live well
- Bait prep station with sink
- Fresh and salt water washdown
- International tuna chair
- Gunnel storage lockers, locking
- Hot/Cold fresh water shower
- Transom door with gate
- Top load cockpit freezer
- Tackle drawer storage station
- Insulated drink box under stairs
- (10) Flush mount rod holders
- Teak covering boards and deck
- Teak swim platform
- Fast draining scupper system
- Courtesy lights
- Cockpit blasters

Fishing Equipment

- B&G Depth/Speed/Log; aft bridge deck
- Steering/Control station; aft bridge deck
- Dual frequency transducers
- Rupp triple spreader outriggers
- (8) Flybridge rod holders

Deck Equipment

- Ideal Windlass with Wildcat
- (5) 15" Stainless steel mooring cleats
- (4) 12" Stainless steel mooring cleats
- 300' 3/4" Anchor rope
- Navigation lights
- Givens 8-person life raft; custom mount
- Awlgrip exterior
- Teak toe rails
- Telephone/Cable TV hook-up
- (6) Mooring lines
- Power assist hydraulic steering system
- Custom flybridge ladder & bowrail
- Danforth Anchor/deck mount
- Spare anchor/deck mount
- Custom mast; antenna & burgee mounts
- (12) Life jackets
- (3) Windshield wipers; fresh water rinse
- Custom 28" flybridge aft deck extension
- Bow pulpit with stainless anchor chute
- Stainless steel rub rail
- Multi-layer epoxy bottom paint system
- Classic Roscioli finish

Additional Equipment

- 800 GPD Watermaker
- Toshiba Telephone system with cellular link; (7) stations
- (2) Glendenning cable reels
- (3) Trombones Buell air horn
- German shocks; deck hatches
- Frameless window installation
- (2) 15KVA isolation transformer
- (2) aquamet 22HS Propeller 3 1/2" shafts
- Stainless performance rudders; 3" shafts
- 120v AC 3/4hp Water pressure pump
- Microphor Vacuflush sanitary system
- Central VacSystem
- Complete vessel alarm system; high water, smoke, holding tank
- Chilled water air-conditioning
- Nibral 5-bladed high performance props
- 30 Gallon hot water heater

- 21 Point Sound Down Construction
- (2) Stainless steel single-leg main struts
- Packless shaft stuffing boxes
- Bronze "ball type" seacocks; bonded
- Davit; Pre-engineered & ready for install
- GVS German locks on salon & bridge doors

Engine Room & Mechanical

- (2) GM DDEC 16V92, 1450HP
- Twin Disc transmissions with provisions for trolling valves, Six degree down angle
- (2) KiloPak Generators 27KW generators
- Custom "show package" finish on engines & generators
- DDEC Reader Displays; overhead mount in custom boxes
- High polish stainless exhaust risers; main engines
- Linear exhaust muffler system; main engines
- Auxiliary fuel transfer pump; main engines & generators
- Racor fuel/water separators; main engines; (3) each
- Racor fuel/water separators; generators (1) each
- Neatly faired, painted and detailed bilges; awlgrip finish
- Teak grates on engine room floor walkway
- Halon fire extinguishing system with engine room vent trap doors; automatic
- Special engine room vent "Sea Water Mist" filters
- (2) High capacity 8" engine room blowers
- (2) Work benches
- Main engine, transmission, generator, lube oil change system
- (4) Position fuel selectors supply & return
- 12v DC Protection panels
- 24v DC Protection panels
- 12v DC 40amp output battery charger
- 24v DC 15amp output battery charger
- Closed circuit TV camera
- Telephone/intercom

2015 - Cable Marine replaced with all new belts, hoses, pumps, etc. The engine room is a highlight of this vessel and is spotless clean!

Refit & Upgrades, 2014/15

- Allcraft exterior pain 100% w/mask x2
- New center ladder from tuna tower
- New bottom job
- All running gear tuned & new bearings

- Refurbished fighting chair w/new rocket launcher
- Rebuilt compressors
- (1) New & (1) rebuilt chiller for 5-ton chillers A/C system
- Rebuilt windlass
- Electronics on bridge updated to include New Garmin radar, plotter and furuno gear
- (4) New KitchenAid fridge/freezer drawers
- New KitchenAid icemaker
- New GE dishwasher
- New Meile convection oven
- New GE microwave
- New headline throughout
- New carpeting & padding throughout
- New galley flooring
- New granite countertops throughout include flybridge counter
- New sheer blinds
- New valance & lambrquins
- New hull side liner in staterooms
- New wallcoverings in heads
- New built-in leather sofa in salon
- New TVs
- New stereo system & speakers
- New light switches throughout
- New dinette chairs
- New mattresses in master & guest
- New headboards
- New overhead lights in staterooms
- New 32" TVs in staterooms

Exclusions

Owner's personal belongings.

Disclaimer

The Company offers the details of this vessel or yacht in good faith but cannot guarantee or warrant the accuracy of this information nor warrant the condition of the vessel. A buyer should instruct his representatives, agents, or his surveyors, to investigate such details as the buyer desires validated. This vessel or yacht is offered subject to prior sale, price change, or withdrawal without notice.

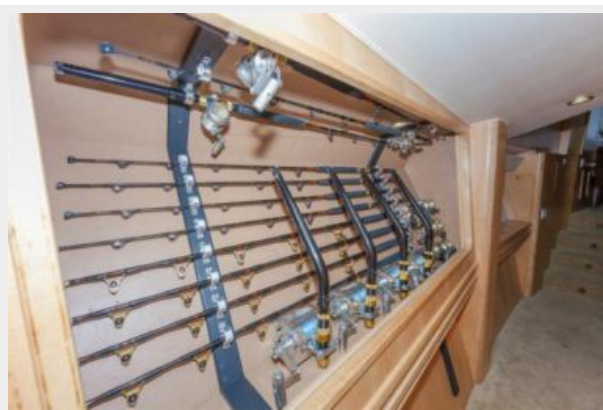
PHOTOS



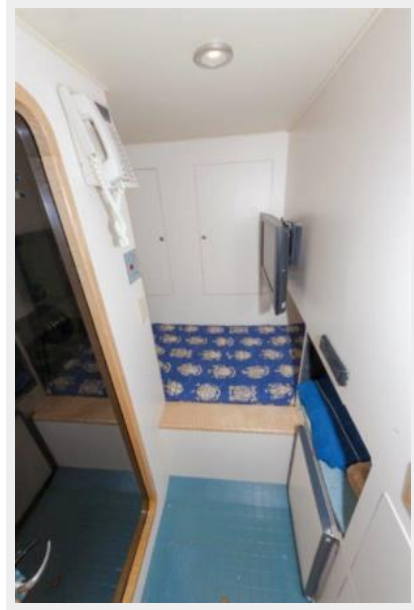
























CONTACTS

Andrey Shestakov, leading yacht broker of the sales department of Shestakov Yacht Sales Inc. Shestakov Yacht Sales Inc., the official representative of the Miami/Fort Lauderdale FL headquarters.

Contact details

Email: andrey@shestakovyachtsales.com

Web: shestakovyachtsales.com/en/

Telephones

USA: +1(954)274-4435

Office hours

Monday – Saturday: **9:00 - 21:00** EDT

Sunday: **closed**

Address



Harbour Towne Marina, 850 NE 3rd St,
STE 213, Dania, FL 33004