

SERENITY — HEESEN YACHTS



Builder: HEESEN YACHTS

Year Built: 2011

Model: Motor Yacht

Price: PRICE ON APPLICATION

Location: United States

LOA: 180' 0" (54.86m)

Beam: 34' 5" (10.49m)

Min Draft: 10' 9" (3.28m)

Max Draft: 10' 9" (3.28m)

Cruise Speed: 12 Kts. (14 MPH)

Max Speed: 16 Kts. (18 MPH)

Our experienced yacht broker, Andrey Shestakov, will help you choose and buy a yacht that best suits your needs **SERENITY — HEESEN YACHTS** from our catalogue. Presently, at Shestakov Yacht Sales Inc., we have a wide variety of yachts available on our sale's list. We also work in close contact with all the big yacht manufacturers from all over the world.

If you would like to buy a yacht **SERENITY — HEESEN YACHTS** or would like help answering any questions concerning purchasing, selling or chartering a yacht, please call **+1(954)274-4435**

TABLE OF CONTENTS

TABLE OF CONTENTS	2
SPECIFICATIONS	5
Basic Information	5
Dimensions	5
Speed, Capacities and Weight	5
Accommodations	5
Hull and Deck Information	6
Engine Information	6
DETAILED INFORMATION	7
Machinery	7
Communication Systems	8
Navigation Systems	8
Entertainment System	9
Galley & Laundry	9
Tenders & Toys	9
Deck Equipment	10
Security, Fire Fighting & Safety Equipment	10
Improvements Since Delivery	10
Exclusions	11
Disclaimer	11
PHOTOS	12
Profile	12
Profile	12
Profile	12
Main Salon Entrance	12
Main Salon	12
Main Salon	12
Main Foyer	13

Formal Dining	13
Master Office	13
Master Office	13
Master Stateroom	13
Master Stateroom	13
Master Bathroom	14
Master Bathroom	14
Galley	14
Galley	14
VIP Stateroom	14
VIP Bathroom	14
VIP Bathroom	15
Guest Stateroom	15
Guest Bathroom	15
Twin Guest Stateroom	15
Pilothouse	15
Skylounge	15
Skylounge	16
Skylounge Aft Deck	16
Skylounge Deck Aft	16
Gym	16
Gym	16
Jacuzzi	16
Sauna	17
Sundeck	17
Garage	17
Garage	17
Engine Room	17
Engine Room	17

CONTACTS	19
-----	-----
Contact details	19
-----	-----
Telephones	19
-----	-----
Office hours	19
-----	-----
Address	19
-----	-----

SPECIFICATIONS

Basic Information

Category: Motor Yacht

Model Year: 2011

Year Built: 2011

Country: United States

Fly Bridge: Yes

Dimensions

LOA: 180' 0" (54.86m)

Beam: 34' 5" (10.49m)

Min Draft: 10' 9" (3.28m)

Max Draft: 10' 9" (3.28m)

Speed, Capacities and Weight

Cruise Speed: 12 Kts. (14 MPH)

Cruise Speed Range: 5000

Max Speed: 16 Kts. (18 MPH)

Max Speed Range: 4000 Kts.

Gross Tonnage: 858 Pounds

Water Capacity: 7925 Gallons

Fuel Capacity: 33022 Gallons

Accommodations

Total Cabins: 6

Sleeps: 12

Captain Cabin: True

Crew Cabin: 7

Crew Sleeps: 13

Hull and Deck Information

Hull Material: Steel

Hull Configuration: Full Displacement

Hull Designer: OMEGA ARCHITECTS

Exterior Designer: OMEGA ARCHITECTS

Interior Designer: FRANK LAUPMAN /
OMEGA ARCHITECTS

Engine Information

Engines: 2

Manufacturer: MTU

Model: 12V 4000 M60

Engine Type: Inboard

Fuel Type: Diesel

DETAILED INFORMATION

Machinery

Main Engines

Engine Type: 2 x MTU 12V4000M60

Engine Hours: Port: 4410 Starboard: 4408 As of March 15th, 2016

Gearboxes: 2 x ZF7640

Drive: 2 x Schaffran 5 blade propeller, fixed pitch, diameter: 1.6m **Tonnage:** 858 Gross Tons

Speed consumption per hours range RPM (Calculations based on using full 120,000ltr capacity)

	Speed	Consumption	Range	RPM
Maximum:	16 knots	450 ltr/hr	4000 NM	1550
Cruising:	12 knots	290 ltr/hr	5000 NM	1250
Economical:	10 knots	200 ltr/hr	6000 NM	1100

Generators and Electricity (Main Gen sets fitted with DeAngelo Seaclean zero emission systems)

Output: 400V, 50Hz

Generators: 2 x Kilopak John Deere Main @ 175kw each, 1 x Kilopak John Deere emergency @ 80kw

Generator Hrs: Port: 11904 Starboard: 11934 Emergency: 26 As of March 15th, 2016

Generator Fuel: Main: 40 ltr/hr Emergency: 25 ltr/hr

Shore Power: Magnus Marine SP200, 150kva dual cord, fitted and commissioned November 2015

Batteries

Main engine: 2 x 12V deep cycle maintenance free per engine, output: 24V

Generator: 2 x 12V deep cycle maintenance free per engine, output: 24V

Emergency: 6 x 12V deep cycle maintenance free in bank, output: 24V

Air Conditioning

Type: Heinan and Hopman HH-Salor-230 chilled water system, Water in: 12'c // Water out: 6'c

Other Machinery

Water makers: 2 x HEM 30/3400 modular type D = 26m³ / day

Stabilizers: Naid Model 820 with at anchor stabilization

Bow Thruster: HRP Type 2001 TT, 125kw

Steering System: Northrop Grumann Sperry

Fuel Separator: Westfalia OTC 2 fuel separator

Sewage System: Hamann HL CONT 0.1m³/ min L FRAME system

Fresh Water System: 3 x Lowara frequency driven pumps with HEM silver angel sterilizer.

Bilge Water Filter: Veolia RWO 15ppm oily water separator

Lube Oil Capacity: 2.195m³

Waste Oil Capacity: 0.933m³

Bilge Water Capacity: 0.933m³

Communication Systems

SAT Com: 2 x VSAT with arbitration switch for seamless transfer whilst swinging at anchor, 1 x TVRO satellite TV antenna, Fleet 500. External Wi-Fi antenna for in port use and 3G internet capabilities **Phone System:** Panasonic digital PABX internal phone system with VOIP and external dial out to GSM **VHF:** SAILOR RT 6222 **Cellular Phone System:** GSM Antenna – V-Sat x 2 Dish - SatPhone Fleet 500 **Intercom:** YES

Navigation Systems

Radar: FURUNO FAR – 21 X 7 (-BB) SERIES **Gyrocompass:** SPERRY MARINE NAVIGAT X MK1 **Magnetic Compass:** C.PLATH **Auto Pilot:** SPERRY MARINE AUTOPILOT 4000 **Depth Sounder:** SKIPPER GDS102 DUAL CHANNEL 10-265KHZ 6 FURUNO REMOTE DISPLAYS

RD-33 **GPS:** SIMRAD MX 512 **Weather FAX:** INMARSAT EGC THRANE & THRANE TT 3000
Ships Computer: TRANSAS NAVI SAILOR 4000 **Wind/Speed Log:** OMC-131-TRUE WIND
DISPLAY / FURUNO DOPPLER SPEED LOG DS 80 **Navtex:** FURUNO NX 700A

Entertainment System

Video Equipment: KALEIDESCAPE, CRESTRON CONTROLLED BY IPAD 2 1x 60" SONY BRAVIA FULL 1080P HD LCD TV'S 3x 55" SONY BRAVIA FULL 1080P HD LCD TV'S 5x 32" SONY BRAVIA FULL 1080P HD LCD TV'S Audio Equipment: KALEIDESCAPE

Galley & Laundry

Main Galley Equipment

Cooking Equipment: LEVENTI SLIM OVEN, GAGGENAU STOVE WITH 6 HOT PLATES
Refrigeration/Freezer: FOSTER PROFESSIONAL FRIDGE, WALK-IN FRIDGE AND FREEZER **Dishwasher:** MIELE G7856

Crew Galley/Mess Equipment

Refrigeration/Freezer: BUILT IN GAGGENAU FRIDGE **Other:** PANASONIC INVERTER MICROWAVE NN-SD3815

Additional Galley Equipment

Cooking Equipment: MIELE COMBINATION MICRO-WAVE H 50-80 B, GAGGENAU DEEP FRYER 3 Phase

Laundry Equipment:

Main Laundry Equipment: MIELE PROFESSIONAL VARIO. 3 TUMBLE DRYERS AND 3 WASHING MACHINES

Tenders & Toys

Tenders:

PASCOE 7.4M SHUTTLE. YANMAR DIESEL 315HP 4.2L 6CYL 24V TURBO DIESEL

RESCUE TENDER - ZODIAC WITH YAMAHA 25HP 2 STROKE

PASCOE 6.2M SHUTTLE (IN STORAGE IN FT.LAUDERDALE) **Dive Gear:** BAUER AIR

COMPRESSOR MARINER 250, SCUBA PRO BCD'S, MARES FINS AND MASKS **Other:** 2x YAMAHA WAVE RUNNERS, 2x YAMAHA STAND UP JET SKIS, FLY BOARD, JETOVATOR, 3x S.U.P'S, WAKEBOARDS

Deck Equipment

Anchor Windlass: STAAL ART TECHNICS **Aft Warping Capstans:** STAAL ART TECHNICS
Anchors: 2x POOL TW FULLY BALANCED HIGH HOLDING POWER **Anchor Chain:** U2 GALVANIZED – 2x 200M (INCLUDING FITTINGS) **Boat Crane and Davits:** HYDROMAR RESCUE BOAT CRANE WITH INCORPORATED WINCH – SWL 1050KG **Passerelle:** HYDROMAR **Swimming Platform:** HYDROMAR

Security, Fire Fighting & Safety Equipment

Security Equipment: **CCTV System:** MPA BY HEESEN (TIJSSEN ELEKTRO) **Cameras:** 6 SAMSUNG (3 WITH 360 DEGREE VIEWS) **Monitors:** MAP BY HEESEN (TIJSSEN ELEKTRO)

Fire Fighting Equipment:

Fire Control System: HIGH FOG SYSTEM WITH AUTOPRIME INTERACTIVE FIRE DETECTION SYSTEM **Fire Extinguishers:** 18x 2KG POWDER, 23x 6KG POWDER, 10x 9LTR AFFF, 1x 2LTR AFFF, 1x 6LTR WET CHEMICAL, 9x 5KG CO2 **Alarms:** 47 SMOKE DETECTORS, 6 HEAT DETECTORS, 15 MANUAL CALL POINTS

Safety Equipment

Life Rafts: 6x 12 PERSON, DAVIT LAUNCHED SURVITECH ZODIAC SOLAS A PACK

Life Rings: 2 LIFEBUOYS, 2 LIFEBUOYS WITH 30M FLOATING LINE, 2 LIFEBUOYS WITH LIGHTS, 2 LIFEBUOYS WITH ORANGE SMOKE AND STROBE LIGHTS

EPIRBs: 1x JOTRON TRON 40GPS MKII

Flares: 12 PARACHUTE FLARES, 4 LINE THROWERS

Medical Equipment: SUBSCRIPTION WITH MEDAIRE / MEDLINK FOR 20 CREW WITH CATEGORY A MEDICAL SUPPLIES

Improvements Since Delivery

Available upon request.

Exclusions

Owner's personal belongings.

Disclaimer

The Company offers the details of this vessel or yacht in good faith but cannot guarantee or warrant the accuracy of this information nor warrant the condition of the vessel. A buyer should instruct his representatives, agents, or his surveyors, to investigate such details as the buyer desires validated. This vessel or yacht is offered subject to prior sale, price change, or withdrawal without notice.

PHOTOS

Profile



Profile



Profile



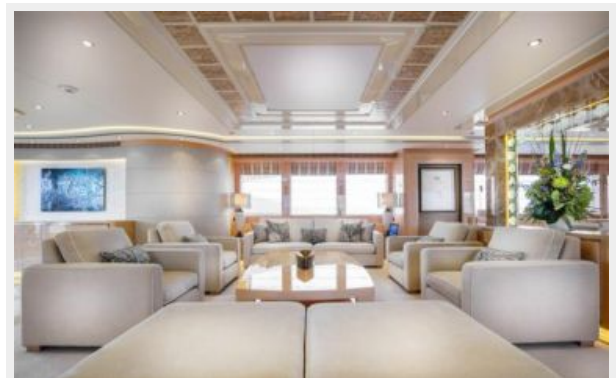
Main Salon Entrance



Main Salon



Main Salon



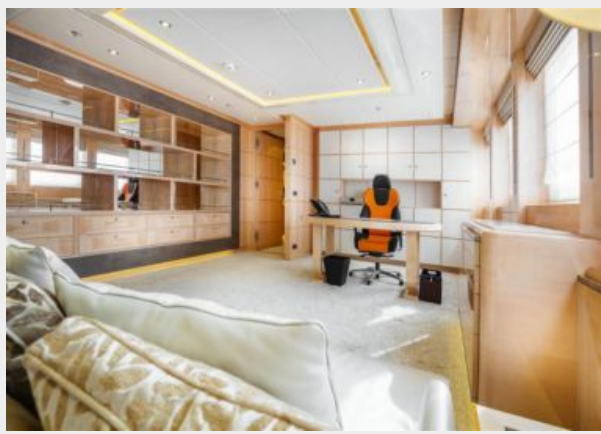
Formal Dining



Main Foyer



Master Office



Master Office



Master Stateroom



Master Stateroom



Master Bathroom



Master Bathroom



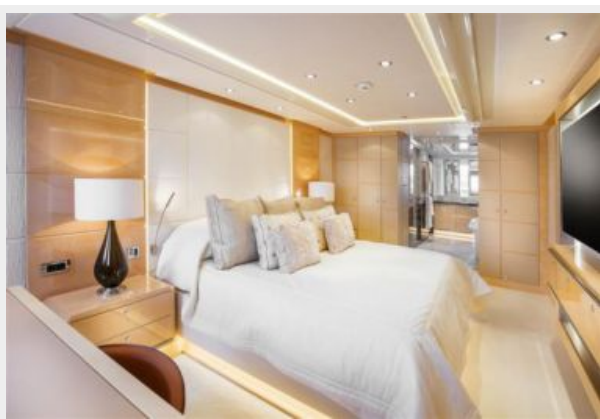
Galley



Galley



VIP Stateroom



VIP Bathroom



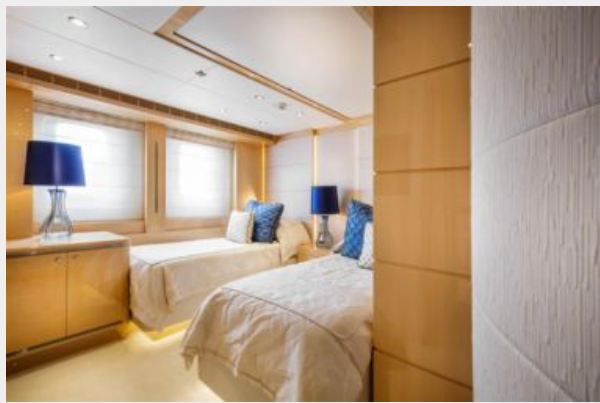
VIP Bathroom



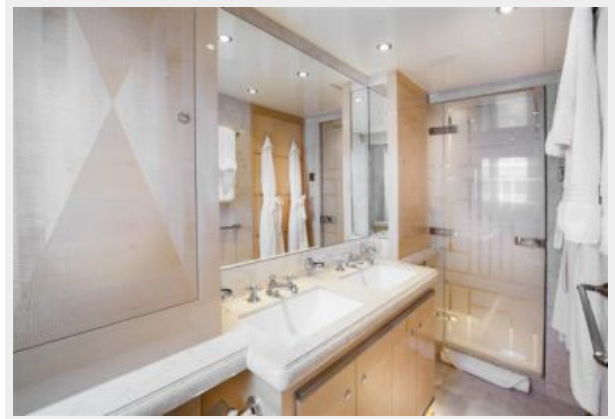
Guest Stateroom



Twin Guest Stateroom



Guest Bathroom



Pilothouse



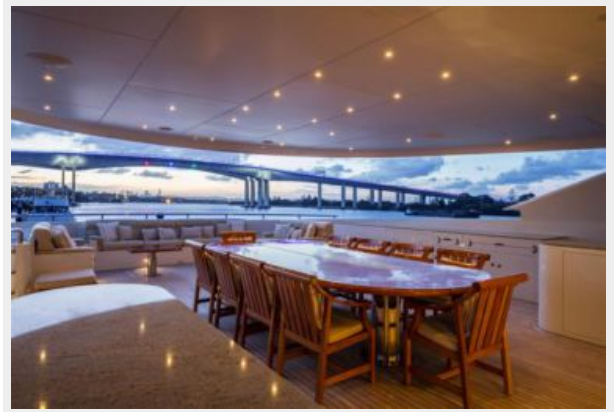
Skylounge



Skylounge



Skylounge Aft Deck



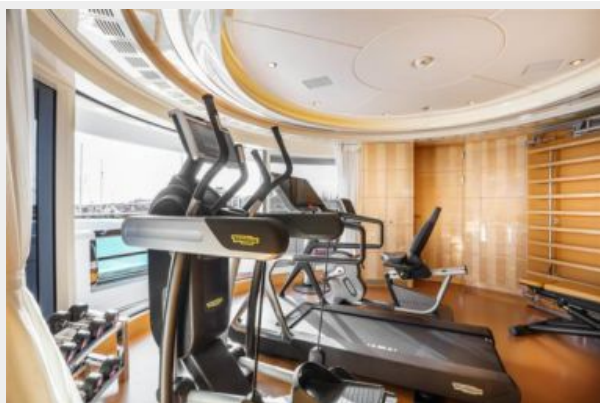
Skylounge Deck Aft



Gym



Gym



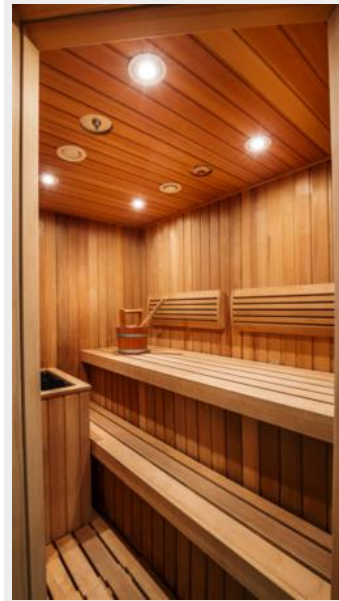
Jacuzzi



Sundeck



Sauna



Garage



Garage

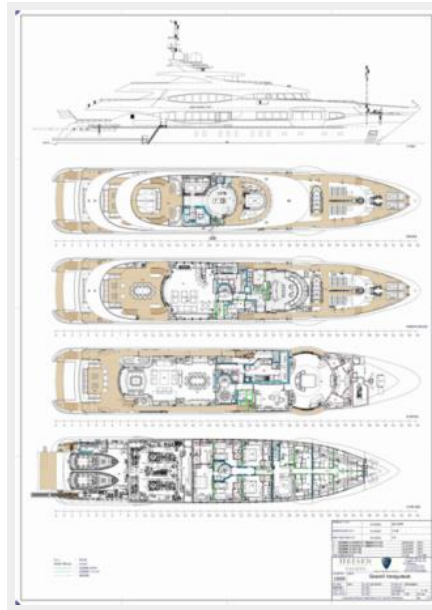


Engine Room



Engine Room





CONTACTS

Andrey Shestakov, leading yacht broker of the sales department of Shestakov Yacht Sales Inc. Shestakov Yacht Sales Inc., the official representative of the Miami/Fort Lauderdale FL headquarters.

Contact details

Email: andrey@shestakovyachtsales.com

Web: shestakovyachtsales.com/en/

Telephones

USA: +1(954)274-4435

Office hours

Monday – Saturday: **9:00 - 21:00** EDT

Sunday: **closed**

Address



Harbour Towne Marina, 850 NE 3rd St,
STE 213, Dania, FL 33004