

BLUEWATER III — HATTERAS



Судостроитель: HATTERAS

Год постройки: 2008

Модель: Моторная яхта

Цена: **ЦЕНА ЯХТЫ ПО ЗАПРОСУ**

Местонахождение: United States

Длина общая: 80' 0" (24.38m)

Ширина: 21' 4" (6.50m)

Макс. осадка: 5' 5" (1.65m)

Крейс. скорость: 21 Kts. (24 MPH)

Купить **Bluewater III — HATTERAS** а также выбрать подходящую вам яхту из нашего каталога яхт вам поможет опытный яхтенный брокер Андрей Шестаков. На сегодняшний день компания **Shestakov Yacht Sales Inc.** имеет большое количество яхт в собственном списке продаж, а также тесно сотрудничает со всеми крупными яхтенными производителями по всему миру.

Для того чтобы купить яхту **Bluewater III — HATTERAS** а также проконсультироваться по любому вопросу связанному с покупкой, продажей, чартером яхт позвоните по телефону **+7(918)465-66-44**.

ОГЛАВЛЕНИЕ

ОГЛАВЛЕНИЕ	2
ХАРАКТЕРИСТИКИ	6
Обзор	6
Основная информация	6
Размеры	6
Скорость, вместимость и масса	6
Размещение	7
Корпус и палуба	7
Информация о двигателе	7
ПОДРОБНОЕ ОПИСАНИЕ	8
Broker Remarks	8
Accommodations	8
Notable Features	8
Main Salon, Dining and On-Deck Dayhead	8
Country Kitchen Style Galley	9
Helm and Upper Lounge and Flybridge	9
Aft Deck and Swim Platform	9
Master Stateroom	9
Forward VIP Stateroom	9
Port and Starboard Guest Rooms	10
Crew Area	10
Entertainment Equipment	10
Galley Equipment	10
Laundry Equipment	10
Mechanical Equipment	11
Deck Equipment	11
Underwater Equipment	11
Air Conditioning	11

Water System	12
Electrical Equipment	12
Communication and Navigation Equipment	12
Safety and Security Equipment	12
Fire Extinguishing System	13
Exclusions	13
Исключения	13
Отказ от ответственности	13
ФОТОГРАФИИ	14
Bow	14
Bow Profile	14
Aft	14
Passarelle	14
Swim Platform	15
Bow	15
Starboard Pasageway	15
Bow	15
Boarding Ladder	16
Aft Deck Stairs	16
Aft Deck	16
Aft Deck	16
Crew	16
Crew	16
Crew	17
Day head	17
Dinette	17
Dinette	17
Engine Room	17
Engine Room	17

Engine Room	18
Engine Room	18
Engine Room	18
Engine Room	18
Forward Head	19
Forward Guest	19
Galley	19
Galley	19
Helm	20
Helm	20
Laundry	20
Master	20
Master	21
Master	21
Master	21
Master Closet	21
Master Head	22
Master Head	22
Starboard Guest Head	22
Starboard Guest	22
Starboard Guest	23
Upper Salon	23
Upper Salon	23
Upper Salon	23
Upper Salon	23
Upper Salon	23
Upper Salon	24
КОНТАКТЫ	25
Контактная информация	25

Телефоны	25
Время работы	25
Адрес	25

ХАРАКТЕРИСТИКИ

Обзор

BLUEWATER III was dubbed at the time as being the highest spec 80 Hatteras ever built. The tasteful, modern and contemporary interior fits perfectly with the upgraded electronics and entertainment package which includes a top of the line Bang & Oulfsen audio/video system. The exterior is also well executed and full of added features, including full teak decks and a huge hydraulic swim platform and large outside grill.

The 2009 model 80 Motoryacht boasts an impressive 21'4" beam, and the design allows the Salon and Master stateroom to take full advantage of this large interior volume. Only drawing 5'5" gives you access to the shallow waters of the Bahamas and beyond, and the large swim platform and increased storage allows you to carry an array of toys.

Основная информация

Тип судна: Моторная яхта	Модельный год: 2009
Год постройки: 2008	Страна: United States
Открытая палуба мостика: Да	Кубрик: Да

Размеры

Длина общая: 80' 0" (24.38m)	Ширина: 21' 4" (6.50m)
Макс. осадка: 5' 5" (1.65m)	Трапы: 21' 1" (6.43m)
Длина привального бруса: 80' 0" (24.38m)	

Скорость, вместимость и масса

Крейс. скорость: 21 Kts. (24 MPH)	Вместимость воды: 326 Gallons
Объем топливного бака: 2858 Gallons	

Размещение

Всего кают: 4

Всего коек: 6

Спальные места: 9

Всего ком. состава: 6

Каюты экипажа: 1

Комм. состав экипажа: 1

Корпус и палуба

Материал корпуса: Fiberglass

Информация о двигателе

Двигатели: 2

Производитель: MTU

Модель: 16V 2000 M91

Тип двигателя: Inboard

Тип топлива: Diesel

ПОДРОБНОЕ ОПИСАНИЕ

Broker Remarks

The most custom outfitted 80 Hatteras ever constructed! • 2009 80 Hatteras Enclosed Bridge with Twin 2000 HP MTU engines • Proven World Traveler / with Atlas Frequency converter • Shows in “like new” condition through out, never chartered • Zero speed at rest fin stabilizers • 2500 lbs capacity custom swim platform transom lift • Custom Stainless steel hydraulic passerelle • Solid teak decks on Aft deck, Flybridge, and Swim platform • Worldwide High Speed internet via F55 VSAT • Recently installed HD7 Sat TV system • 4 independent Navigation systems • Completely custom layout with an easily customizable interior layout, with loose furniture • Heated floors, in all heads • 50 HP Hydraulic bow and stern thrusters running off redundant main engine PTOs • Recently installed custom full aft flybridge sunshade • Four docking stations, plus wireless Yacht controller

Accommodations

Bluewater III has 4 cabins that can accommodate up to 9 guests. All cabins are accessed via the starboard staircase just beyond the on deck dayhead, a large full beam master cabin located mid ships, benefits from being in the most stable part of the yacht. The versatile forward VIP cabin can accommodate a third guest in a single berth on the starboard side. Two twin cabins are located on either side of the central guest lobby, with generous single berths in the port cabin that can be converted into a suite, and Pullman berths in the starboard cabin which also converts into a gym. All cabins have generous en suite bathrooms, and feature Under-floor heating.

Notable Features

Zero speed stabilizers V-sat Yacht Controller V-cool on upper helm and Galley window Air conditioned engine room Atlas shore power converter HD Satellite TV to all social areas & capability to all cabins Samsung HD LED TV's in the common areas Huge hydraulic swim platform Hydraulic bow and stern thrusters Hydraulic passerelle Integrated ships management system Oceanview ZEUS (FLIR) camera system

Main Salon, Dining and On-Deck Dayhead

The spacious and tastefully appointed saloon is filled with an abundance of natural light from the large aspect side windows, and the contemporary furnishings make this area feel much larger than other 80' Hatteras yachts. The elegant Burrell wood dining table sits forward of the main salon and gives a beautiful view of the horizon whilst entertaining guests. Access to the guest staterooms is via stairs on the starboard side, just beyond a luxurious day-head decorated in deep copper tones and Burrell wood cabinetry.

Country Kitchen Style Galley

The huge country style galley is located forward on the main deck and is surrounded on three sides by large light filled windows. The panoramic breakfast dining area sits forward of a central service island making preparing large meals a breeze. The galley is well appointed with top of the range stainless steel appliances, granite counter tops and dark wenge flooring.

Helm and Upper Lounge and Flybridge

Full bridge controls with five large monitors, 3 x Recaro black leather Helm chairs with heat/cool and lumbar controls, all on electric retractable pedestals. This beautiful and open plan entertaining area has dark stained oak wood flooring, plush free standing chairs and low coffee table, and a new 55" LED TV lies opposite. The entertainment center includes a large retractable TV, integrated Bang & Olufsen surround sound. To open this area up to the outdoors, there are four large electrically operated retractable windows, two aft and one to port and starboard. Combined with the large aft glass sliding doors to the teak deck, this area almost feels like an open flybridge. The aft teak deck is completely open without the clutter usually seen in this area, the result is a yacht that combines the best of both worlds. Greater interior volume and comfort of an enclosed bridge, yet still having plenty of usable exterior space and a feeling of being out on the water.

Aft Deck and Swim Platform

The large covered aft deck has ample seating for 6 at the beautiful teak table with stainless steel pedestals, Overhead sound system controlled from the entertainment system in salon, with separate zoning for exterior areas. This deck is accessed from either the oversized glass sliding door, or port side staircase from the upper aft deck. Comfortable bench seating overlooks a huge teak hydraulic Swim Platform/Tender lift with remote operation. Access to this platform is via port and starboard teak steps that lead down from the aft deck.

Master Stateroom

Spacious full beam cabin with large central walk round recently replaced handcraft mattress #5 bed and love seat to starboard, huge side hull windows fill this room with natural light, and giving you a beautiful view of the horizon from the plush bed. Large cedar lined walk-in closet has ample storage and hanging space, and further draw space is located in various locations throughout the room. A luxurious, modern and bright en suite bathroom with his and hers vanity unit and large shower is located to the aft of the cabin. An updated 48" Samsung LED TV lies across the foot of the bed.

Forward VIP Stateroom

This large and light filled flexible cabin has been modified from the standard Hatteras layout to accommodate extra hanging space and the option to sleep a third guest in a single bunk to Starboard, making this cabin perfect for a small family or nanny. The en suite bathroom is located aft in the bedroom and is decorated to the same luxurious quality as the master cabin, with birds-eye maple and granite finishes.

Port and Starboard Guest Rooms

The bright Port cabin comprises of two generous single berths, large cedar lined closet and en suite bathroom with generous shower, this cabin can also be converted into a suite. Starboard cabin has been designed to be able to quickly convert into a gym with scope for exercise equipment and then back into a cabin as needed. This room can accommodate two guests in under and over bunks, and has a full en suite bathroom with full shower.

Crew Area

Dynamic and upgraded crew arrangement with interchangeable new handcraft mattress twin or King bed system allows this area to be utilized for couples or non couples. Navigation systems, alarms, power management monitoring and aft deck camera are relayed through crew AV system. The roomy crew mess is equipped with large bench seating, granite table and basic cooking facilities. Multiple storage areas enables this area to be well suited as a control room and staging area.

Entertainment Equipment

New Samsung LED TV's are fitted in the Salon, Master and enclosed flybridge, each with individual HD satellite TV controls & universal remotes. Each cabin and common area has a satellite feed and is also HD capable.

Galley Equipment

All Stainless Steel appliances. Sharp Microwave oven Kitchen Aid Halogen Ceramic Cook Top Accubake Pyrolytic Electric Oven Whirlpool Garbage Compactor Scotsman Ice Maker Subzero Double Fridge Freezer Bosch Dishwasher

Laundry Equipment

Whirlpool Tumble Dryer, ducted exhaust overboard. Whirlpool Washing Machine

Mechanical Equipment

Main Engines: 2 x MTU V16 2000 M91 Generators: 2x Onan 32kw Racor Triple transfer filters Racor Duplex fuel filter system - main engines ABT TRAC Hydraulic bow/stern thrusters 50kW/80hp each with PTO on each Gearbox Electric Hydraulic pump for TRAC Zero Speed Stabilizers Thermostatically controlled engine room temperature Air conditioned engine room Hydraulic power steering inc heat exchanger Water maker, Sea Recovery Aqua Whisper 1400, 220 LPH Hydraulic cooling pumps inc full redundant system Hydraulic control unit for stabilizer A/C pump, with remote start from Helm Power management system panel in fwd companionway Engine control system panels DDC/MTU Automatic submersible bilge pumps Passerelle hydraulic control unit, with 2 remotes and control interface on aft deck. Reversible 3-phase engine room fans with auto pressure controls and emergency shutdown Workshop air compressor Oil exchange system connected to Main Engines, Generators, and Gearboxes Fire alarms system and CO detection system Emergency lighting (DC) Fire extinguishing system (FM200) Main engine electric pre-heat elements A/C Additional back-up fresh water pumps with diverter valves. Emergency Engine Back-up controls. Axis camera Portable Foam and Dry Powder fire extinguishers Battery level, bilge alarm, fire alarm, movement sensors, geofence and loss of A/C all monitored by Paradox Security System, relayed via satellite.

Deck Equipment

1x Hydraulic anchor windlass - operated on mains or electric hydraulic pump. 1x Manson Super High Holding Power polished stainless 80kg anchor 2x Electric capstans on Aft Deck Opacmare hydraulic Passerelle Custom alloy mast Electric BBQ on flybridge aft deck, with storage locker. Removable side gangway, stored in locker on foredeck Custom locker/ coat store on aft deck stb 4 x wing stations allowing fantastic sight lines in a range of docking situations

Underwater Equipment

Conventional drive through ZF reduction gearboxes. 8 Blade Michigan propellers on 4"/100mm shafts Custom Hydraulic trim tabs (heavy duty) Bow thruster, (tube w counter rotating props, hydraulic, engine driven &ndash 50kW/80hp) Stern thruster, (tube w counter rotating props, hydraulic, engine driven (50kW/80hp) Seawater strainers 2x main engines, 2x generators, 2 x AC, 1 x water maker.

Air Conditioning

Chilled water air conditioning with Cruisair air handlers, reversible for heating. Circulation pump 2 x Sea water pumps and strainers (1 x spare) Cruisair slave control panel in Galley 2 x full capacity reverse cycle Cruisair chillers Individual air handlers for each cabin, interior common areas and engine room.

Water System

Sea Recovery Aqua Whisper water maker. 220L/hr (1400GPD) Particle filter, Oil/water filter, 2 stage carbon filter and UV Sterilizer. 2 x A/C fresh-water pressure pumps – headhunter Mach 5 Shore connection with pressure regulator and auto-fill solenoids Water level indicator on vessel management system. 2 x electric heater tanks in series for unlimited hot water. Large black-water tank with level indication at monitoring panel, and high level relays in all heads Manual tank overboard discharge (DC discharge pump) or to dockside Headhunter toilet systems utilizing high pressure water only. (No problematic vacuum pumps).

Electrical Equipment

Generators: 2x Onan 32kw 24v Battery banks x 4 Semi-automatic control of generators and distribution system Atlas power converter – 1,2 or 3 phase <500V input, 110V output at 60Hz Shore power selection and sub board feeder selection Mastervolt Battery chargers, inc redundancy Emergency battery cross over system, including individual Genset bank link to start mains. Shore supply provided via a 125 amp 3-phase connection, or 125A Bi-Phase connection. Glendenning Cablemaster system and remote control for two shore power cables. Four underwater transom lights

Communication and Navigation Equipment

Communication: KVH Tracphone V7 VSAT (including voice, data and fax) fully integrated with onboard systems KVH Tracvision HD 7 system. 6 x Icom waterproof VHF handheld radios, fully mounted in Galley cupboard for easy access. GOST Marine Magellan Platinum satellite controlled Security and remote monitor system Navigation: VEI 17” Super Sunlight displays x 5 Touch Screen Hatteras vessel management system Furuno Navnet 3D systems x 4 (4 x master if necessary) Furuno DRS25A Open array radar transceiver with spare 12kW internal componentry. Furuno AIS receiver Furuno dual 1kW transducer, pt and stb Furuno GPS/WAAS antenna x 2, pt and stb Marci ENS MAXSEA Nav computer as backup Icom external loud hailer, fwd and rear Icom M604 VHF x 2, inc slave control in crew cabin Simrad AP26 Autopilot Icom ICM802 Digital SSB MF/HF radio Oceanview ZEUS gyro-stabilized thermal, low-light and color camera available on all helm screens, Including wireless remote control with tracking functions. Navnet information relayed on Crew cabin TV.

Safety and Security Equipment

Camera for aft deck and engine room Zeus Thermal camera with auto tracking for use in SAR or MOB situation Zeus colour camera broadcast to internet. 1 x 16-man Life Raft on racks with hydrostatic release Life-Rings Signal Flare Kit Adult and Child Life Jackets with lights & whistle Paradox marine security system with remote (satellite) arming and remote camera viewing capabilities. EPIRB AIS receiver

Fire Extinguishing System

Smoke alarm system with central alarm at monitoring panel and sensors in all accommodation cabins (including crew), galley/mess, saloon. Heat detection in engine room. FM200 system c/w heat actuated detection system, engine and generator remote shut down and engine room compartment close down, portable fire extinguishers, all inspected and certified.

Exclusions

All sheets and towels

Исключения

При продаже яхты исключаются личные вещи владельца.

Отказ от ответственности

Компания предоставляет описание судна или яхты добросовестно, но не может гарантировать точность этой информации, а также не ручается за техническое состояние. Покупатель должен проинструктировать своих агентов или оценщиков исследовать представленную информацию более подробно, по собственному желанию. Продажа судна или яхты, изменение цены или снятие с продажи будет происходить без предварительного уведомления.

ФОТОГРАФИИ

Bow



Bow Profile



Aft



Passarelle



Swim Platform



Bow



Starboard Pasageway



Bow



Boarding Ladder



Aft Deck Stairs



Aft Deck



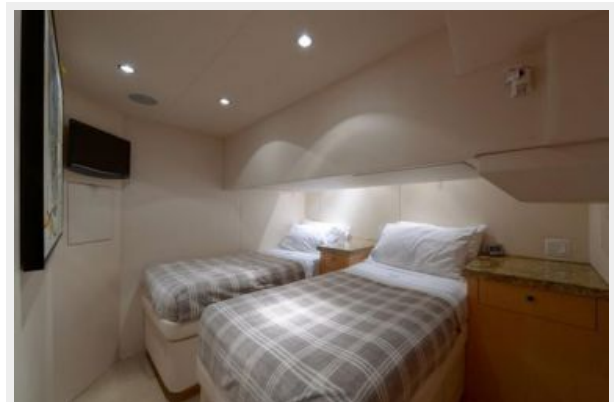
Aft Deck



Crew



Crew



Crew



Day head



Dinette



Dinette



Engine Room



Engine Room



Engine Room



Engine Room



Engine Room



Engine Room



Forward Guest



Forward Head



Galley



Galley



Helm



Helm



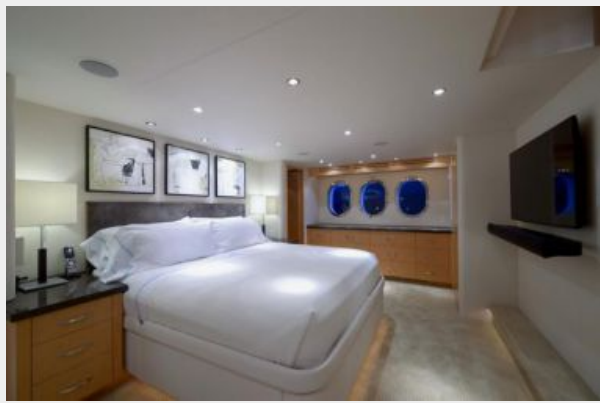
Laundry



Master



Master



Master



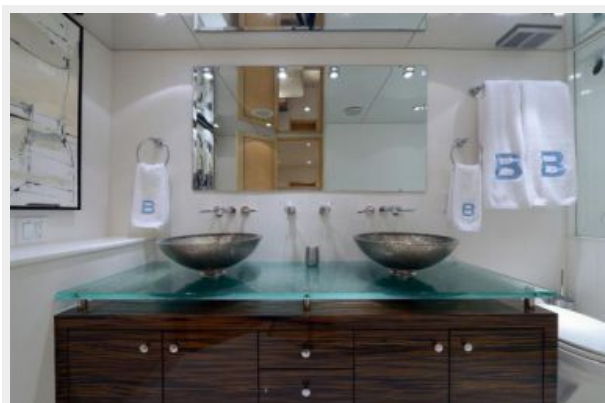
Master



Master Closet



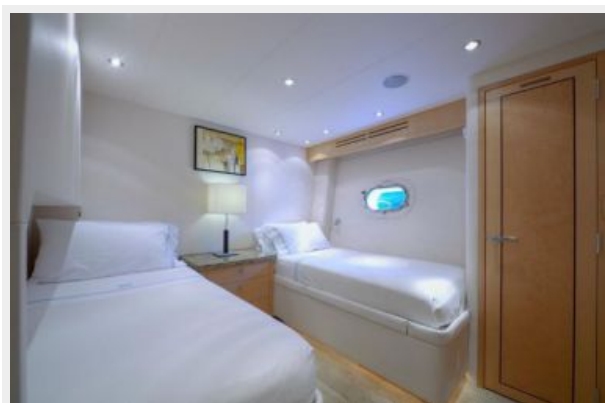
Master Head



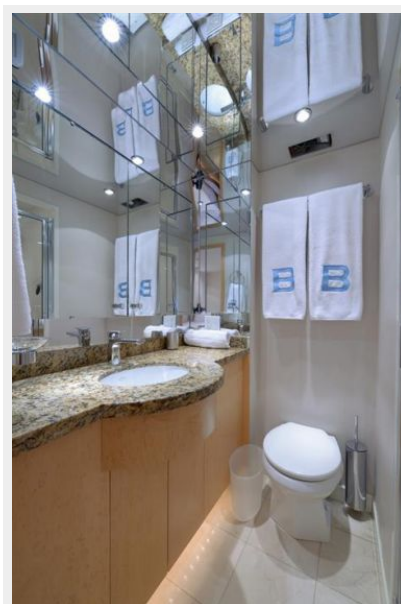
Master Head



Starboard Guest



Starboard Guest Head



Starboard Guest



Upper Salon



Upper Salon



Upper Salon



Upper Salon



Upper Salon



Upper Salon



КОНТАКТЫ

Андрей Шестаков (Andrey Shestakov) – ведущий яхтенный брокер отдела продаж яхт и судов компании Shestakov Yacht Sales Inc. Официальный представитель Shestakov Yacht Sales Inc. для русскоговорящих клиентов в центральном офисе компании в Майами/Форт Лодердейл/Флорида/США.

Контактная информация

Email: andrey@shestakovyachtsales.com

Web: shestakovyachtsales.com

Телефоны

Краснодарский край: **+7(918)465-66-44**

США, Майами, Флорида: **+1(954)274-4435**

Время работы

Понедельник – Суббота: **9:00 - 21:00**
EDT

Воскресенье: **Закрето**

Адрес



Harbour Towne Marina, 850 NE 3rd St,
STE 213, Dania, FL 33004