

FREE BIRD — BROWARD



Судостроитель: BROWARD

Год постройки: 1997

Модель: Моторная яхта

Цена: **ЦЕНА ЯХТЫ ПО ЗАПРОСУ**

Местонахождение: United States

Длина общая: 111' 0" (33.83m)

Ширина: 20' 0" (6.10m)

Макс. осадка: 6' 0" (1.83m)

Крейс. скорость: 17 Kts. (20 MPH)

Макс. скорость: 20 Kts. (23 MPH)

Купить **FREE BIRD — BROWARD** а также выбрать подходящую вам яхту из нашего каталога яхт вам поможет опытный яхтенный брокер Андрей Шестаков. На сегодняшний день компания **Shestakov Yacht Sales Inc.** имеет большое количество яхт в собственном списке продаж, а также тесно сотрудничает со всеми крупными яхтенными производителями по всему миру.

Для того чтобы купить яхту **FREE BIRD — BROWARD** а также проконсультироваться по любому вопросу связанному с покупкой, продажей, чартером яхт позвоните по телефону **+7(918)465-66-44**.

ОГЛАВЛЕНИЕ

ОГЛАВЛЕНИЕ	2
ХАРАКТЕРИСТИКИ	4
Обзор	4
Основная информация	4
Размеры	4
Скорость, вместимость и масса	4
Размещение	5
Корпус и палуба	5
Информация о двигателе	5
ПОДРОБНОЕ ОПИСАНИЕ	6
Salon	6
Galley	6
Master Stateroom	7
VIP Stateroom	7
Two Guest Staterooms	8
Crew Quarters	8
Pilothouse	8
Flybridge Electronics and Equipment	9
Aft Deck and Cockpit	10
Deck Equipment	10
Electrical Equipment	11
Engine Room and Mechanical	11
Upgrades and Improvements, 2014-2015	12
Исключения	14
Отказ от ответственности	14
ФОТОГРАФИИ	15
КОНТАКТЫ	20
Контактная информация	20

Телефоны	20
Время работы	20
Адрес	20

ХАРАКТЕРИСТИКИ

Обзор

FREE BIRD features a custom Patrick Knowles interior with oak woodwork and cabinetry throughout. Popular four stateroom layout with a massive country kitchen and his and her head in master. Significant upgrades include rebuilt engines and gens, new electronics, new galley appliances, new exterior cushions and updated A/V. Recent yard period with maintenance on all underwater gear including rudders, stabilizers, cutlass bearings, props and spurs. FREE BIRD's paint is perfect, and her 3412 Caterpillars push her to a 17 knot cruise. Truly a turn-key yacht and the perfect choice for family cruising or charter service.

Основная информация

Тип судна: Моторная яхта

Модельный год: 1997

Год постройки: 1997

Год обновления: 2014

Страна: United States

Верх: Bimini Top

Кубрик: Да

Размеры

Длина общая: 111' 0" (33.83m)

Ширина: 20' 0" (6.10m)

Макс. осадка: 6' 0" (1.83m)

Скорость, вместимость и масса

Крейс. скорость: 17 Kts. (20 MPH)

Макс. скорость: 20 Kts. (23 MPH)

Вместимость воды: 1000 Gallons

Объем топливного бака: 7000 Gallons

Размещение

Всего кают: 4

Спальные места: 8

Каюта капитана: Да

Корпус и палуба

Материал корпуса: Aluminum

Информация о двигателе

Двигатели: 2

Производитель: Caterpillar

Модель: 3412

Тип двигателя: Inboard

Тип топлива: Diesel

ПОДРОБНОЕ ОПИСАНИЕ

Salon

- Custom interior by Patrick Knowles
- New carpeting throughout 2011
- Oak woodwork & cabinetry throughout
- Custom walk up wet bar with granite countertops, Sub Zero refrigerator, icemaker, glass & bottle storage
- Entertainment system w/new flat panel HDTV in custom hi/lo cabinet, Bose speakers, Yamaha amp, BlueRay DVD, Direct TV, & single remote AV integrated system 2013
- Custom upholstered sofa
- Custom lounge chair
- Rattan writing desk with bench
- (2) End tables with palm lamps
- Cocktail table with glass top & coordinating end table
- (2) Custom upholstered over-sized occasional chairs
- Custom dining table with (6) rattan dining chairs
- Custom writing desk with upholstered seat
- Built in Oak buffets with granite top, port & starboard to house formal china and crystal
- Custom upholstered overhead paneling w/crown molding & rope lighting
- Midship entry port & starboard with custom windows
- Custom over-sized windows throughout salon
- Custom fabric window treatments
- Custom 2" natural wood blinds
- Custom overhead lighting
- (2) Decorative wall sconces
- Solid oak radius doors throughout
- (4) Air handlers 2011

Galley

- Sub-Zero refrigerator/freezer w/compressor, refit winter 2014
- GE Signature Series Dishwasher, new winter 2014
- GE Signature Series stove/oven, new winter 2014
- GE Signature Series microwave w/exhaust hood, new winter 2014
- GE Signature Series under counter refrigerator, new winter 2014
- GE signature Series under counter Wine cooler, new winter 2014
- GE signature Trash Compactor, new winter 2014
- Kitchen Aide 1hp disposal, new 2015
- Double s/s sink with custom faucet
- Center island with Corian top

- L-shaped settee with storage below
- (3) Rattan dining chairs & table with Corian top
- Built-in overhead cabinet w/Panasonic 13" TV/VCR, Alpine stereo and CD
- Custom oak cabinetry with Corian countertops, refinished 2013
- Large storage and pantry area above settee with built-in drawers
- Custom 2" natural wood blinds
- Amtico antique flooring
- Galley dinette table

Master Stateroom

- King size bed with upholstered headboard, custom spread & shams
- New Headliner, winter 2014
- Built-in oak nightstands with marble top each side
- Built-in oak dressers and vanity with upholstered bench seat
- Upholstered settee with full length dressing mirror
- Entertainment center with flat panel HDTV (2013), Yamaha stereo/amplifier and Sony Mitsubishi 5-disc CD player
- Walk-in cedar lined closets, port and starboard
- Custom oak valances
- Panasonic phone/intercom system
- Solid oak radius top doors
- New air handlers, 2011

His & Her Bath:

- Jacuzzi tub & marble shower w/entrance on each side
- Custom marble bullnose vanities with recessed Kohler sink & custom hardware
- Marble flooring
- Custom wallcovering

VIP Stateroom

- Queen bed w/drawers below, spread & shams (New mattress 2013)
- Entertainment center w/flat panel HDTV (2013), Alpine stereo & CD player
- Built-in oak double dresser & vanity
- (2) Reading lamps
- Cedar lined closet
- Custom wallcovering and soundproofing
- Panasonic phone/intercom system
- Private bath with Corian tops, full shower & vinyl flooring
- Solid oak radius top doors
- New wallcovering

- Private bath w/granite top, new marble flooring and new fixtures
- New front loading SPT freezer 2013

Two Guest Staterooms

- Each stateroom features a double & twin bed w/indirect rope lighting, spread & shams
- Built-in oak dressers
- Entertainment centers with flat panel HDTV (2013) & Alpine stereo/CD player
- Cedar lined closets
- Panasonic phone/intercom system
- Each with private bath w/vanity, full shower & vinyl flooring
- New air handlers 2013

Companionway:

- Laundry entry with Bosch Axxis washer (2009) / dryer (2013)
- Utility closet and storage cabinets
- Custom wooden molding and frames w/mirrored panels

Crew Quarters

- Captain's cabin w/double berth, 5-drawer oak dresser, hanging locker
- Each cabin w/private bath/shower, vanity and locker
- Air handlers and ducting – new winter 2014
- All walls stripped, cleaned and painted, winter 2014
- Bosh dryer ducting removed, cleaned and replaced, winter 2014
- Bosch stackable washer/dryer combo
- Flat panel HDTV and Alpine stereo
- Cabin to port with upper and lower berths and a 5-drawer oak dresser
- Flat panel HDTV (2013) and Alpine stereo
- Cedar-lined hanging lockers
- Remote safety system alarm (Captains Qtr's)

Pilothouse

- GARMIN GPSMAP 8215 – New Winter 2014
- GARMIN GPSMAP 8212 – New Winter 2014
- PTZ CCTV for engine room and one position aft camera – New Winter 2014
- HP PhotoSmart 5520 Printer/scanner- New Winter 2014
- Raymarine Radar & charter plotter
- Robertson AP9 MK3 autopilot w/navigational interface
- Robertson jog lever

- Northstar 951X GPS chart plotter
- B&G HS 921 speed, distance, depth & temp
- B&G 20/20 CD display
- Sea 8000 Loudhailer & intercom
- Sea 2250 SSB
- Sea 156 VHF
- Caterpillar remote engine gauges
- Rudder angle indicator
- Naiad digital stabilizer controls
- American HPS bow thruster control
- Broward Custom safety system w/audio and visual
- Roberston compass
- KVH SatCom
- KVH TracVision III Satellite TV with 4 Direct TV receiver zones
- ACR searchlight control
- Generator gauges
- Remote start for port generator
- Motorola Nautilus marine cellular phone Panasonic 6-station phone/intercom
- L-shaped upholstered settee
- Custom Scopinich teak table with compass rose inlay

Flybridge Electronics and Equipment

- GARMIN GPSMAP 8208, new winter 2014
- Robertson AP9 MKII Autopilot
- I-COM VHF
- B&G HS 921 speed, distance, depth & temp
- B&G 20/20 CD display
- American HPS bow thruster control
- Rudder angle indicator
- ACR searchlight control

Flybridge Equipment:

- Flybridge cushions, new winter 2014
- Marquipt 2000lb davit, refit 2015
- Wing stations, port & stbd, with controls, thruster, start/stop and jog lever
- Centerline helm station
- Extended flybridge with L-shaped bench seating with custom cushions and covers
- Corian rectangular table
- Wet bar with new facets
- Summit refrigerator
- Commercial icemaker, 2013

- Custom double sun pads
- 16' Novurania tender w/Yamaha 90 HP O/B with removable chocks
- SeaDoo Waverunner, 2011
- Custom Bimini Low Profile top, 2012
- Custom Radar arch
- Deck box
- Custom flybridge air intakes
- Custom Lexan windscreens, 2013
- Custom hatch to boat deck stairwell
- Alpine stereo system w/speakers, 2012

Aft Deck and Cockpit

- Teak decks sanded/plugs, winter 2014
- Semispiral stairwell to flybridge – New Teak, winter 2014
- Teak cap covering boards sanded, 11 coats AWLWOOD varnish, winter 2014
- Rattan/wicker lounge chair w/ottoman, New Cushions - winter 2014
- Builtin settee & (5) folding chairs - New Cushions, winter 2014
- Custom Scopinich teak table with vessel inlay
- Marble top wet bar with undercounter Combo refrigerator, s/s sink, storage
- Large top loading freezer (port)
- Small top loading Freezer (starboard)
- Stainless steel grab rails
- Boarding gates port & stbd
- (8) NB Quartz overhead speakers
- (2) Overhead recessed lights
- (2) Custom storage lockers
- CCTV camera
- Stainless steel safety rails
- Swim platform
- Emergency engine room hatch
- Hubble 100 amp shore power w/ Glendenning cablemaster
- Dual stairs, port & stbd to cockpit
- Dive ladder
- Lazarette with freshwater washdown system
- Raw bilge pump, bilge float switches & fan
- Built-in storage cabinet & lockers
- Glass entry door to crew quarters & engine room
- Aft deck shower

Deck Equipment

- Elliott 16man Solas liferaft – recertified Dec 2015
- Maxwell 3500lb Windlass - refit winter 2014
- Ships Anchor Navy Style 250lb w 350', new chain, winter 2014
- Large sun lounge with storage, new cushions, winter 2014
- Stereo & CD player, winter 2014
- Marquipt 7-step boarding stairs, new Winter 2014
- FORTRESS FX-125 Spare w/200' anchor line with shackles
- Glendenning cable master w/100 amp connector
- Additional 100 amp connector to port
- Full-width Bosun locker
- (8) Seavision underwater lights
- Stainless steel hawse eyes
- Custom aluminum cap rails
- Custom Broward bow flagstaff
- ACR Cat II EPIRB
- Adult life jackets & life rings

Electrical Equipment

- (2) Northern Lights 40KW Generators, Port Gen 1,034 hrs./ Stb Gen In-Frame Rebuild, winter 2014 - 340 hours since Refit
- New freshwater and raw pump, painted, Winter 2014
- Std Gen In-Frame Rebuild Winter 2014 - 340 hours since Refit
- (6) Deka gelcel batteries in Engine room
- New ACM dry cell batteries, Dog House
- MasterVolt 12 volt charger, winter 2014
- NewMar 24 volt charger
- Maxwell battery chargers dog house
- (2) Staco voltage regulators, serviced winter 2014
- Acme isolation transformers

Engine Room and Mechanical

- Twin 3412 Caterpillars, 1350 HP IN FRAME REBUILD WINTER 2014
- Marine Air 15ton chilled water A/C system Serviced WINTER 2014
- A/C primary, backup, raw & chilled waters pumps Serviced 2015
- American HPS bow thruster – Serviced WINTER 2014
- Sturdy electronic engine controls, Port New - Winter 2014
- Spur shafts, New Winter 2014
- Aluminum Mufflers, New Winter 2014
- Naiad digital Datum roll stabilizers fin control system, Serviced Winter 2014
- New air handlers & throughout & new raw water pumps, 2011

- Aquamister 1800 GPD watermaker
- Triple Racor 1000 fuel filters to engines with vacuum gauges
- 12v Submersible bilge pump w/high water alarm
- 110v Electric/manual bilge pumps
- Dual air compressors
- Hynautic steering
- Lube oil transfer & storage system
- AC/DC fuel transfer system
- Headhunter Mach 5 primary & backup freshwater pump
- Halon auto shutdown system for engines, gens, ventilators, blowers & bilges
- 40 gal and 10 gal hot water heaters with circulating loop
- Kidde dry chemical fire extinguishers throughout
- Work bench, vice and tool box

Upgrades and Improvements, 2014-2015

DECK

- Aft Deck NEW Cushions and Canvas Covers
- Flybridge NEW Cushions and Canvas Covers
- Forward Deck NEW Cushions and Canvas Covers
- Marquipt 7-step boarding stairs replaced with NEW
- Bar faucets flybridge and aft deck NEW
- Aft deck teak, sanded and plugs replaced
- Tender and Jet Ski Canvas NEW
- Maxwell 3500 windlass serviced

MACHINERY

- 3412 Caterpillar In-Frame Rebuild Winter 2014 - 300 hours since Refit
- 3412 Crank Case Exhaust Kits upgrade
- Main engine Exhaust riser bellows and water injectors replaced and risers wrapped by DeAngelo Exhaust
- Aluminum Exhaust Mufflers manufactured NEW by DeAngelo Exhaust
- ZF Transmissions A4 Service, winter 2014. This service included complete separation from main engines, Vulcan dampners replaced, new upgraded heat exchangers, new Hyd pumps, clutches inspected, oil and filters changed/cleaned
- FUEL TRANSFER manifold removed, fully dismantled and all valves and piping replaced with new parts.
- All raw water intake stand pipe plumbing removed, inspected/cleaned
- Exhaust Thru-Hull ports and Standpipes cleaned and coated with ATLAS coating for prolong protection from salt water and exhaust water.
- Std Gen In-Frame Rebuild Winter 2014, 340 hours since Refi
- Marquipt 2000lb Davit- Refit 2015. Includes Boom hydraulic cylinders removed and rebuilt,

solenoids replaced, Hydraulic lines replaced, lift cable and shackle replaced and all painted

RUNNING GEAR

- RUDDERS removed and dialed to industry standards RUDDER TUBES removed and replaced with new manufactured tubes to include packing flanges. Process included gas freeing aft Port and starboard fuel tanks (cleaned). All rudder Hydraulic steering cylinders rebuilt,
- SHAFTS removed and dialed to industry standards.
- ENGINES aligned in concert with shaft and cutlass bearing work.
- SHAFT STERN TUBES inspected cleaned ATLAS coating applied for installation of TIDES Dripless Shaft Seals.
- CUTLASS BEARINGS replaced.
- PROPELLERS removed and turned to industry standards
- SPURS New installed
- STABILIZER FINS removed and repaired, shafts seals serviced

HULL

- Hull hard sanded and painted NOV 2015
- All Zincs replaced

INTERIOR

- Pilot House headliner and windshield upholstered post replaced
- Master Stateroom and Bathrooms headliner replaced
- Window treatments throughout interior replaced
- Guest staterooms carpet replaced
- All Port holes Lexan replaced and tinted

ELECTRONICS

- GARMIN GPSMAP 8215
- GARMIN GPSMAP 8212
- GARMIN GPSMAP 8208
- PTZ CCTV for engine room and one position aft camera
- HP PhotoSmart 5520 Printer/scanner

CREW QUARTERS

- Air handlers and ducting replaced with NEW
- All walls stripped, of wall paper, cleaned and painted
- Bosh Dryer ducting removed, cleaned and replaced with NEW

Исключения

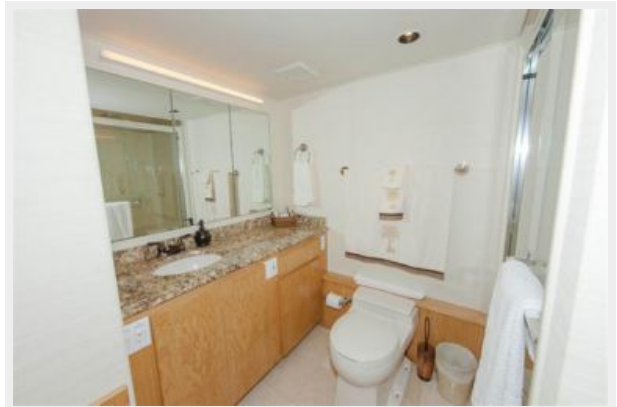
При продаже яхты исключаются личные вещи владельца.

Отказ от ответственности

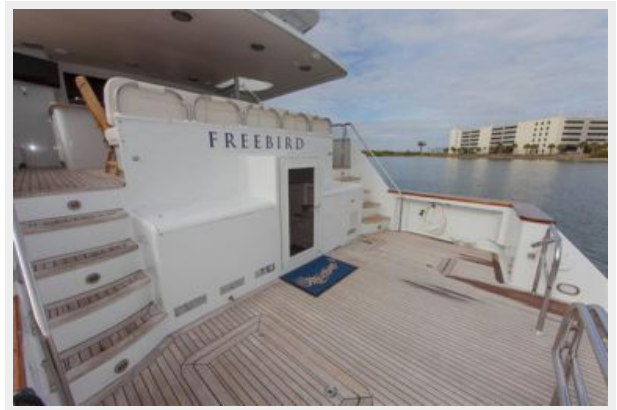
Компания предоставляет описание судна или яхты добросовестно, но не может гарантировать точность этой информации, а также не ручается за техническое состояние. Покупатель должен проинструктировать своих агентов или оценщиков исследовать представленную информацию более подробно, по собственному желанию. Продажа судна или яхты, изменение цены или снятие с продажи будет происходить без предварительного уведомления.

ФОТОГРАФИИ











КОНТАКТЫ

Андрей Шестаков (Andrey Shestakov) – ведущий яхтенный брокер отдела продаж яхт и судов компании Shestakov Yacht Sales Inc. Официальный представитель Shestakov Yacht Sales Inc. для русскоговорящих клиентов в центральном офисе компании в Майами/Форт Лодердейл/Флорида/США.

Контактная информация

Email: andrey@shestakovyachtsales.com

Web: shestakovyachtsales.com

Телефоны

Краснодарский край: **+7(918)465-66-44**

США, Майами, Флорида: **+1(954)274-4435**

Время работы

Понедельник – Суббота: **9:00 - 21:00**
EDT

Воскресенье: **Закрито**

Адрес



Harbour Towne Marina, 850 NE 3rd St,
STE 213, Dania, FL 33004