

## PRO SPORTS



**Year Built:** 2004

**Model:** Boats

**Price:** PRICE ON APPLICATION

**LOA:** 36' (10.97mm)

**Beam:** 12.66

**Min Draft:** 1' 8" (0.51mm)

**Max Draft:** 2' 6" (0.76mm)

Our experienced yacht broker, Andrey Shestakov, will help you choose and buy a yacht that best suits your needs **PRO SPORTS** — n/a from our catalogue. Presently, at Shestakov Yacht Sales Inc., we have a wide variety of yachts available on our sale's list. We also work in close contact with all the big yacht manufacturers from all over the world.

If you would like to buy a yacht **PRO SPORTS** — n/a or would like help answering any questions concerning purchasing, selling or chartering a yacht, please call **+1(954)274-4435**

# TABLE OF CONTENTS

TABLE OF CONTENTS	2
SPECIFICATIONS	5
Basic Information	5
Dimensions	5
Speed, Capacities and Weight	5
Accommodations	5
Hull and Deck Information	5
Engine Information	5
PHOTOS	6
Starboard Bow View	6
Port Bow View	6
Bow View	6
Bottom Tunnel View	6
Stern View	6
Electric Windless	6
Bow Area W/Seating & Large Insulated Ice/Fish Box	7
Companionway To Forward Cabin	7
Cabin To Port W/Twin Berth, Head, & Sink	7
Cabin To Starboard W/Twin Berth & Seating	7
ICOM IC-M502 VHF	7
Ritchie Compass	7
Raymarine ST70 Depth/Speed/Trip	8
Raymarine ST6001 Autopilot	8
Raymarine C120 Plotter/Sounder/Radar	8
Raymarine Closed Array Radar	8
ACR Global Fix Pro EPIRB	8
Clarion CMD4 Marine CD/Stereo Clarion CMD4 Marine CD/Stereo	8
Pioneer Marine Speakers	9

Helm Station	9
Center Console W/Electronics Box & Hardtop	9
Triple Helm Seating W/Flip-Up Bolsters	9
Suzuki Fly-By-Wire Throttles	9
Suzuki Digital Engine Gauges	9
Suzuki Digital Ignition W/Engine Sync	10
Accessory Rocker Switches	10
4-AGM Deep Cycle Marine Batteries W/Switches & Charger	10
Point Pad For Spotlight	10
Twin 2013 300 Suzuki Outboards W/Full Warranties Thru January 2019	10
Hydraulic Porta-Brackets For Full Engine Height Adjustment	10
Integrated Swim Platform W/Step & Fold-Down Ladder	11
Oversized Swim Ladder W/Step, Railings, and Fold-Down Steps Between The Engines	11
Forward Bow Area Looking Aft	11
Cockpit Looking Forward	11
Tackle Center W/Sink & Cleaning Station	11
Insulated Transom Cooler	11
Fish-Boxes Port & Starboard Of Center Console W/Overboard Drains	12
300 SQ Feet Of Total Cockpit Space	12
Aft Lift Out Cockpit Fish-Boxes/Storage Port & Starboard	12
Large Transom Live-Wells Port & Starboard	12
Lots Of Fishing Room 360 Degrees Around Boat	12
Electric Head W/Overboard Discharge & Macerator	12
Manufacturer Provided Image	13
Large Insulated Ice/Fish Box	13
Manufacturer Provided Image	13
<b>CONTACTS</b>	<b>14</b>
Contact details	14
Telephones	14

Office hours	14
Address	14

---

# SPECIFICATIONS

---

## Basic Information

---

**Category:** Boats

**Sub Category:** Walk-around

**Model Year:** 2004

**Year Built:** 2004

## Dimensions

---

**LOA:** 36' (10.97mm)

**Beam:** 12.66

**Min Draft:** 1' 8" (0.51mm)

**Max Draft:** 2' 6" (0.76mm)

## Speed, Capacities and Weight

---

**Water Capacity:** 75 Gallons

**Fuel Capacity:** 300 Gal Gallons

## Accommodations

---

**Total Cabins:** 1

**Total Berths:** 2

**Sleeps:** 2

**Total Heads:** 1

## Hull and Deck Information

---

**Hull Material:** Fiberglass

**Deck Material:** Fiberglass

**Hull Configuration:** Deep Vee

**Hull Color:** WHITE

## Engine Information

---

**Engines:** 2

**Manufacturer:** Suzuki

**Engine Type:** Outboard

**Fuel Type:** Gas

# PHOTOS

**Starboard Bow View**



**Port Bow View**



**Bow View**



**Bottom Tunnel View**



**Stern View**



**Electric Windless**



**Bow Area W/Seating & Large Insulated Ice/Fish Box**



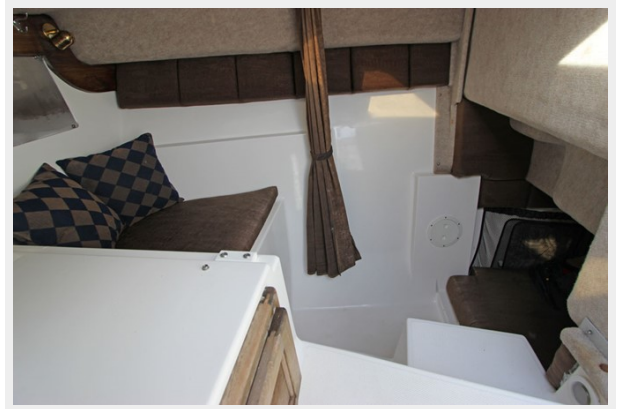
**Companionway To Forward Cabin**



**Cabin To Port W/Twin Berth, Head, & Sink**



**Cabin To Starboard W/Twin Berth & Seating**



**ICOM IC-M502 VHF**



**Ritchie Compass**



**Raymarine ST70 Depth/Speed/Trip**



**Raymarine ST6001 Autopilot**



**Raymarine C120 Plotter/Sounder/Radar**



**Raymarine Closed Array Radar**



**ACR Global Fix Pro EPIRB**



**Clarion CMD4 Marine CD/Stereo Clarion  
CMD4 Marine CD/Stereo**





**Pioneer Marine Speakers**



**Helm Station**



**Triple Helm Seating W/Flip-Up Bolsters**



**Center Console W/Electronics Box & Hardtop**



**Suzuki Fly-By-Wire Throttles**



**Suzuki Digital Engine Gauges**



### Suzuki Digital Ignition W/Engine Sync



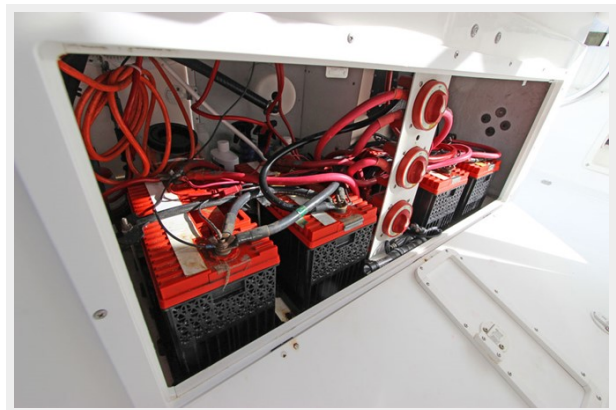
### Accessory Rocker Switches



### Point Pad For Spotlight



### 4-AGM Deep Cycle Marine Batteries W/Switches & Charger



### Twin 2013 300 Suzuki Outboards W/Full Warranties Thru January 2019



### Hydraulic Porta-Brackets For Full Engine Height Adjustment



### Integrated Swim Platform W/Step & Fold-Down Ladder



### Oversized Swim Ladder W/Step, Railings, and Fold-Down Steps Between The Engines



### Forward Bow Area Looking Aft



### Cockpit Looking Forward



### Tackle Center W/Sink & Cleaning Station



### Insulated Transom Cooler



**300 SQ Feet Of Total Cockpit Space**



**Fish-Boxes Port & Starboard Of Center Console W/Overboard Drains**



**Large Transom Live-Wells Port & Starboard**



**Aft Lift Out Cockpit Fish-Boxes/Storage Port & Starboard**



**Lots Of Fishing Room 360 Degrees Around Boat**



**Electric Head W/Overboard Discharge & Macerator**



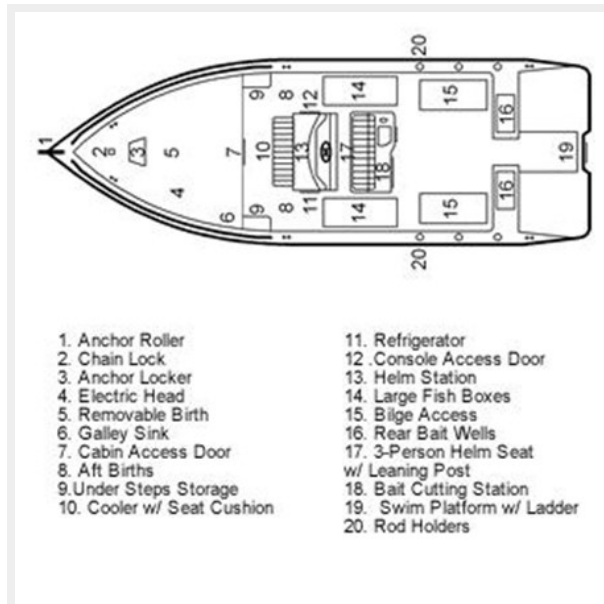
### Large Insulated Ice/Fish Box



### Manufacturer Provided Image



### Manufacturer Provided Image



---

# CONTACTS

---

Andrey Shestakov, leading yacht broker of the sales department of Shestakov Yacht Sales Inc. Shestakov Yacht Sales Inc., the official representative of the Miami/Fort Lauderdale FL headquarters.

---

## Contact details

---

Email: [andrey@shestakovyachtsales.com](mailto:andrey@shestakovyachtsales.com)

Web: [shestakovyachtsales.com/en/](http://shestakovyachtsales.com/en/)

---

## Telephones

---

USA: +1(954)274-4435

---

## Office hours

---

Monday – Saturday: **9:00 - 21:00** EDT

Sunday: **closed**

---

## Address

---



Harbour Towne Marina, 850 NE 3rd St,  
STE 213, Dania, FL 33004