

# 34FT 2012 FORMULA PERFORMANCE CRUISER — FORMULA



**Builder:** FORMULA

**Year Built:** 2012

**Model:** Cruiser

**Price:** PRICE ON APPLICATION

**Location:** United States

**LOA:** 34' 0" (10.36m)

**Beam:** 11' 6" (3.51m)

**Max Draft:** 3' 0" (0.91m)

Our experienced yacht broker, Andrey Shestakov, will help you choose and buy a yacht that best suits your needs. The 34ft 2012 Formula Performance Cruiser — FORMULA is available from our catalogue. Presently, at Shestakov Yacht Sales Inc., we have a wide variety of yachts available on our sale's list. We also work in close contact with all the big yacht manufacturers from all over the world.

If you would like to buy a yacht 34ft 2012 Formula Performance Cruiser — FORMULA or would like help answering any questions concerning purchasing, selling or chartering a yacht, please call +1(954)274-4435

---

# TABLE OF CONTENTS

---

TABLE OF CONTENTS	2
SPECIFICATIONS	3
Overview	3
Basic Information	3
Dimensions	4
Speed, Capacities and Weight	4
Hull and Deck Information	4
Engine Information	4
DETAILED INFORMATION	5
Exterior	5
Cockpit	6
Cabin	6
Engines	7
BROKERS REMARKS	8
Exclusions	8
Disclaimer	8
PHOTOS	9
CONTACTS	20
Contact details	20
Telephones	20
Office hours	20
Address	20

---

# SPECIFICATIONS

---

## Overview

---

**Owner found next boat! Priced for quick sale!**

**Owner is very proactive and maintains her with an open check book.**

**No disappointments with this one!**

This vessel is considered to be one of the best express cruisers in her class. Formula is noted for their top of the line construction features, sleek design and spectacular ride.

The air conditioned cabin is breathtaking with it's Tommy Bahama Tropical Sunrise Decor package, Ultraleather lounge and high gloss wood table, serves a six person lounge. There is a full galley and an enclosed head with shower. Corian countertops are found in the galley and head. The forward double berth and aft cabin lounge/ berth have privacy enclosures. Top of the line entertainment system compliments the cabin and cockpit area.

The cockpit has wrap around seating with tables that can be lowered, allowing it to become a sun pad. The dual position helm seat, companion seat and molded entertainment wet bar makes this a nice area to entertain family and friends. The swim platform with courtesy lighting is accessible thru the transom door. Foredeck sun pads are reached by a center opening windshield accessible by the molded in-dash forward deck steps.

The twin 380hp Mercruisers have low hours. The Yacht Flagship/Design hull shines like a diamond. This vessel shows extremely well!

---

## Basic Information

---

**Category:** Cruiser

**Sub Category:** Express

**Model Year:** 2012

**Year Built:** 2012

**Country:** United States

---

## Dimensions

---

**LOA:** 34' 0" (10.36m)

**Beam:** 11' 6" (3.51m)

**Max Draft:** 3' 0" (0.91m)

**Clearance:** 11' 6" (3.51m)

**MFG Length:** 35' 7" (10.85m)

---

## Speed, Capacities and Weight

---

**Water Capacity:** 57 Gallons

**Holding Tank:** 40 Gallons

**Fuel Capacity:** 206 Gallons

---

## Hull and Deck Information

---

**Hull Material:** Fiberglass

---

## Engine Information

---

**Engines:** 2

**Manufacturer:** Mercruiser

**Model:** 8.2 Mag SeaCore

**Engine Type:** I/O

**Fuel Type:** Gas/Petrol

---

# DETAILED INFORMATION

---

## Exterior

---

- NMMA Yacht/CE Certification
- Transferable 5-Year Formula Guard® Limited Protection Plan w/10-year Structural Warranty (USA only)
- Ashland Maxguard LE gelcoat in White or Soft White
- Imron® standard graphic & cockpit accent striping
- Pressure-treated Perma Panel™ structural hull matrix
- Foam-filled hull cavities
- Chemically bonded & thru-bolted deck-to-hull joint
- Heavy-duty PVC gunwale w/stainless insert
- Integrated bow platform
- Electric windlass w/chain counter, 200' chain, polished stainless anchor, remote control & freshwater anchor wash down system
- Concealed anchor davit w/fiberglass chain locker
- Polished remote-control searchlight
- Stainless hardware & 316L welded rails
- Stainless custom Formula logo-cast cleats (10), fuel fills, forward polished Bomar® cabin venting hatches w/screens (2), forward Bomar cabin venting hatches w/integrated OceanAir® rollout SKYscreen & privacy shade (3) & polished port lights w/screens (6)
- Nonskid deck center walkway & walk-around
- Two cockpit-coordinated Sunbrella® DriFast® foam deck sunpads w/ 316L rails
- Tinted, tempered curved-glass windshield w/center walk-thru, polished stainless frame & windshield wipers
- Radar arch w/mast light flagstaff & white air horn
- Clarion® waterproof transom-mounted stereo control
- Extended integrated swim platform w/conceal stainless swim ladder & pull-up cleats
- Transom shower w/hot & cold controls
- Molded transom trunk w/pneumatic lifts, fender storage, storage for cockpit tables & cushion
- 120V shorepower w/fail-safe galvanic isolator & 30-amp cord
- Polished stainless shorepower, cable TV, phone hookups & chromed city water inlet

---

## Cockpit

---

- Continuous molded deck & cockpit liner
- Molded in-dash forward deck access steps w/316L stainless handrail
- Burl wood-finish dash panels, Ritchie® compass, digital depth sounder, Raymarine Hybridtouch color chartplotter, Livorsi® chromed shifters/throttles w/in-handle outdrive trim switch, Dino tilt steering wheel w/burl insets, auxiliary 12V outlet, tilt wheel in leather wrapped stainless & lockable under-dash storage compartment
- Mercury DTS w/SmartCraft™ VesselView
- Electronic shift & throttle controls
- Bennett trim tab switches & indicators
- Clarion® dash-mounted stereo control, six 6 1/2" speakers w/polished stainless grilles, 200W amplification, 200W cockpit subwoofer & iPod™/MP3 port
- Illuminated waterproof accessory rocker switches
- 12 polished stainless drink holders
- Cockpit/swim platform blue/white LED courtesy lights w/handheld remote control
- Integral 316L stainless steel safety rails
- Weather-resistant cockpit seating
- Twin command seating w/dual-position helm and companion seats
- Port lounge w/fiberglass-lined storage
- Aft U-shaped lounge seating w/fiberglass-lined storage, two dual-height tables and sunpad inserts
- Disconnect switch for auxiliary 12V power
- Molded wetbar w/integrated sink, corian countertop, trash container, 316L stainless steel safety rail & 120V GFCI outlet
- Demand water system w/55-gallon capacity
- Fire extinguisher
- Battery parallel emergency switch
- Custom patterned cockpit carpet
- Pneumatic-assist transom door
- Bimini top, front & side curtains w/easy-mount zipper connectors & extended aft cockpit enclosure.

---

## Cabin

---

- Sliding/locking cabin door
- Cherry woodgrain-finish entry steps
- American Cherry woodgrain-finish flooring throughout cabin
- Forward stateroom w/privacy curtain, centerline bed w/Sensus memory foam mattress & storage below

- Individual reading lights
- Two cedar-lined forward stateroom hanging lockers w/automatic lights
- Curved Ultraleather sofa seating w/dual height high-gloss Deep Cherry wood dining tables & filler cushions
- Custom decor pillows and draperies
- Cabinetry in high-gloss Deep Cherry finish
- 18,000 BTU reverse air conditioner w/digital climate control
- 22' LCD HDTV DVD combo player in main salon w/dockside access cord
- Clarion AM/FM/CD stereo w/changer control
- Ultraleather aft cabin lounge/double berth, filler cushions & privacy enclosure
- Cedar-lined aft cabin hanging locker w/automatic light
- Removable high-gloss, Deep Cherry wood cocktail table
- Built-in WalVac sweeper system
- In-floor storage compartments
- Complete galley in high-gloss Deep Cherry finish w/storage and hardwood dovetailed drawers, full Corian countertop, beverage center, polished stainless steel sink, concealed 2-burner electric stove w/safety shut off switch, 120V/12V stainless steel refrigerator, microwave oven & concealed in-counter trash container
- Fire extinguisher
- Demand water system w/one-point water fill for freshwater tank
- 120V water heater w/heat exchanger
- Molded private head compartment w/molded vanity, lower doors in high-gloss Deep Cherry Finish, Corian counter, polished stainless steel sink w/swivel faucet, Vacuflush unit w/holding tank & dockside pump out, separate stall shower w/hinged acrylic door & exhaust fan
- Two carbon monoxide detectors

## Engines

---

- Twin Mercury 8.2 MAG SeaCore 380HP with 222 hours
- 7.5 KW/120V Kohler generator with 188 hours
- Courtesy lighting
- Fume detector
- Automatic fire extinguisher
- Thru-bolted engine mounts
- Three marine batteries w/battery retainers
- Disconnect switches for starting batteries
- Battery parallel emergency switch
- 60 amp battery charger

- Active and passive galvanic corrosion protection systems
- Rotary bilge blowers
- Automatic bilge pump
- Bilge high water alarm
- Bennett trim tabs
- Polished stainless steel props

---

## **BROKERS REMARKS**

---

This vessel has been meticulously maintained by the owner. Owner is proactive with service.

This vessel will create life long memories for you and your family !

---

## **Exclusions**

---

Owner's personal belongings.

---

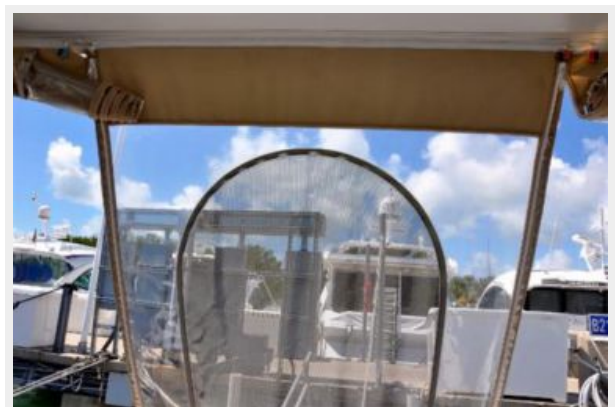
## **Disclaimer**

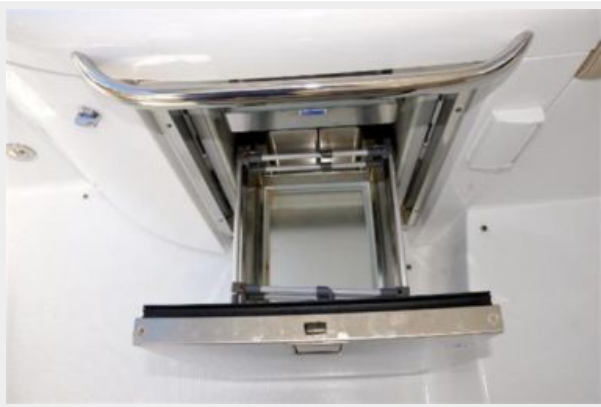
---

The Company offers the details of this vessel or yacht in good faith but cannot guarantee or warrant the accuracy of this information nor warrant the condition of the vessel. A buyer should instruct his representatives, agents, or his surveyors, to investigate such details as the buyer desires validated. This vessel or yacht is offered subject to prior sale, price change, or withdrawal without notice.



# PHOTOS











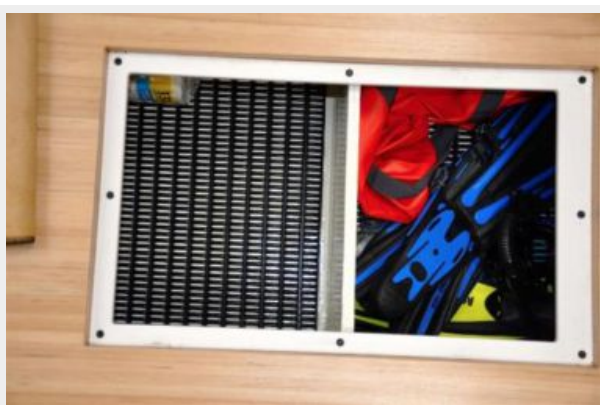




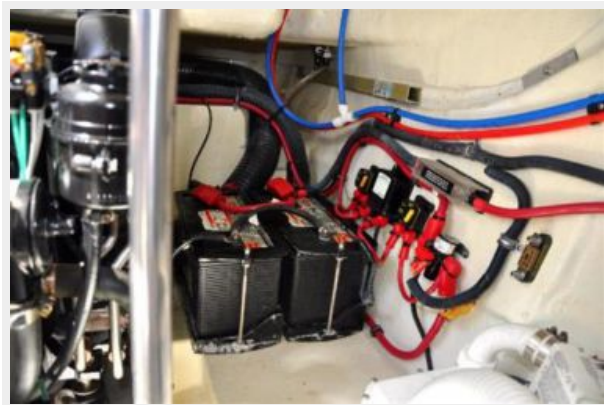


















# CONTACTS

---

Andrey Shestakov, leading yacht broker of the sales department of Shestakov Yacht Sales Inc. Shestakov Yacht Sales Inc., the official representative of the Miami/Fort Lauderdale FL headquarters.

## Contact details

---

Email: [andrey@shestakovyachtsales.com](mailto:andrey@shestakovyachtsales.com)

Web: [shestakovyachtsales.com/en/](http://shestakovyachtsales.com/en/)

## Telephones

---

USA: +1(954)274-4435

## Office hours

---

Monday – Saturday: **9:00 - 21:00** EDT

Sunday: **closed**

## Address

---



Harbour Towne Marina, 850 NE 3rd St,  
STE 213, Dania, FL 33004