

## SECOND STAR — SABRE YACHTS



**Builder:** SABRE YACHTS

**LOA:** 42' 0" (12.80m)

**Year Built:** 2007

**Model:** Motor Yacht

**Price:** PRICE ON APPLICATION

**Location:** United States

Our experienced yacht broker, Andrey Shestakov, will help you choose and buy a yacht that best suits your needs **Second Star — SABRE YACHTS** from our catalogue. Presently, at Shestakov Yacht Sales Inc., we have a wide variety of yachts available on our sale's list. We also work in close contact with all the big yacht manufacturers from all over the world.

If you would like to buy a yacht **Second Star — SABRE YACHTS** or would like help answering any questions concerning purchasing, selling or chartering a yacht, please call **+1(954)274-4435**

# TABLE OF CONTENTS

TABLE OF CONTENTS	2
SPECIFICATIONS	3
Overview	3
Basic Information	3
Dimensions	3
Hull and Deck Information	3
Engine Information	4
DETAILED INFORMATION	5
Accommodations	5
Galley	6
Electronics	6
Electrical System	6
Custom Options & Upgrades	7
Mechanical Equipment	7
Plumbing	7
Additional Equipment & Information	7
Disclaimer	8
Exclusions	8
Disclaimer	8
PHOTOS	9
CONTACTS	17
Contact details	17
Telephones	17
Office hours	17
Address	17

---

# SPECIFICATIONS

---

## Overview

---

Late June 2016, the boat has just had a professional detail job which includes a wax job, interior detailing, engine room detailing, and all metalwork polished. Excellent!!

"Second Star" is a unique mix of the Sabre 42 Flybridge Sedan and the 42 Express Cruiser. She has all of the interior comforts of the Flybridge Sedan without the Flybridge. Twin 500hp electronic Cummins QSC 8.3 diesel engines (Only 310 hours!), FURUNO electronics package, Flag Blue hull (Painted with Awlgrip 2011), flush-fill cherry wood interior with teak and holly sole, Corian counter tops in galley, Sidepower Bow thruster, Dual Stidd seats for captain and mate, Flat screen TV's w/DVD, Ice maker, Oil changing system, Ultrasuede in the main salon, additional freezer (Subzero), Clarion stereo (AM/FM/CD), Glendinning Cablemaster with remote and much more. This is a lovely, traditional, downeast vessel built with pride in the Maine tradition. She is a very rare find in that she has a much more spacious interior than her sister 42' Expresses, with most of the extra space being found in the rather large salon. She is fast, elegant, quiet, and efficient to operate- not to mention an incredible sea-boat! She has just enough exterior teak to turn heads, but not so much to be a maintenance nightmare. "Fast Cruising" at its finest! Serious Seller will consider all reasonable offers- call listing agent to discuss "real" numbers. VERY nice boat!!

## Basic Information

---

**Category:** Motor Yacht

**Model Year:** 2007

**Year Built:** 2007

**Country:** United States

## Dimensions

---

**LOA:** 42' 0" (12.80m)

## Hull and Deck Information

---

**Hull Material:** Fiberglass

## Engine Information

---

**Engines:** 2

**Manufacturer:** Cummins

**Model:** QSC 8.3

**Engine Type:** Inboard

**Fuel Type:** Diesel

---

# DETAILED INFORMATION

---

---

## Accommodations

---

The Sabre 42 Sedan was designed as a long term cruising yacht for a couple with occasional guests. Starting forward and aft of the chain locker; Her berth has a luxurious queen sized mattress with Memory Foam top, and there is plenty of storage below the berth that has a hinged top with gas struts. Outboard and above her traditional hull ceilings are found enclosed lockers and convenient shelves for books and other storage, as well as a cedar lined hanging locker to keep clothing crisp and neat. A large Skyscreen hatch overhead has a screen and a sun shade to block out unwanted light.

Next aft to starboard is a comfortable guest cabin with a settee that can convert to a double berth. Cabinets and shelves are outboard as well as having storage under the settee. Her privacy doors open double wide to allow an open concept across from the galley.

To port is her large head with vanity and Corian counter top, marine toilet with holding tank and a separate shower stall with teak grate and seat. There is abundant storage under the sink as well as outboard.

Next aft to port is the U-shaped Sea Galley; She is well equipped and has a custom extended cabinet over the stove with louvered doors, lovely Corian counters and all the room and tools for preparing gourmet meals. Down 3 steps from the salon she has an open concept and one can easily commune with guests in the salon.

Up three steps to the Main Salon where one will find the helm to starboard with Stidd seat and side door for easy access to the deck. To port is the Stidd mates seat and navigation station. Aft of the Nav station is the L-shaped dinette with custom salon table (insert leaf with burled maple with high gloss top and high low base). Custom Ultrasuede upholstery, 25" steel base barrel chair opposite the dinette with a custom cabinet for the entertainment center aft of the helm to starboard. She has Accord shades for all the ports as well as the large windows in the main salon. In the evening she has custom Valance lighting giving a warm glow. Exterior windshield covers give privacy to the forward windows. The Sabre 42 Sedan offers great views of her surroundings whether underway or at rest thanks to her large framed windows. Air conditioning and heating systems are standard while opening hatches and windows offer an abundance of ventilation when the weather is fair. Her interior has lovely cherry cabinetry as well as teak and holly sole that give warmth to her bright interior. The salon is an extraordinary space in which to spend time aboard enjoying your favorite cruising destinations.

Leaving the salon aft one enters the aft cockpit. She has a good size wet bar to port with Corian counter, sink with hot and cold pressure water, U-Line ice maker and storage under. Three large hatches provide storage for deck chairs, deck table, fenders, additional dock lines or what ever you need. Port and starboard steps lead to the wonderfully wide side decks for ease in moving forward. She is equipped with heavy duty stainless steel side rails for safety.

Some additional custom features for this vessel are; Flag Blue hull, 2 additional ports, main salon overhead handrail, teak name boards, Corian for the wet bar, vertical hand hold on side of helm for steps to galley, filter on overhead vent from holding tank (Sanigard), Stainless steel towel bars in head and more.

## Galley

---

In the Sabre 42 Sedan's galley-down layout, the working areas are well lit by the large windshield overhead and stainless steel opening portlight. This open and airy galley arrangement allows the helmsperson to be in contact with someone in the galley. This well equipped galley has an abundance of storage as well as counter space for food preparation. She is equipped with numerous plates, cups, silverware and other glasses.

- Princess Courmet electric ceramic top stove with 2 burners
- Tappan Microwave - convection grill
- Sub-Zero refrigerator
- Sub-Zero Freezer (not standard- additional)
- Double stainless steel sinks with hot and cold pressure water
- Port and starboard water gauge
- Courtesy Valance lights

## Electronics

---

- Furuno NAVNET 10.4" color LCD display and a 3.5' Open array Furuno Radar 48NM
- Furuno NAVNET 10.4" color LCD chart plotter with WAAS/GPS receiver
- Furuno RD-30 digital depthsounder mic
- Icom VHF marine radio IC-M504 remote
- Simrad AP2622 autopilot w/remote
- Cummins Smart Craft displays
- Ritchie 6" compass
- Windlass helm remote control
- Guest spotlight
- Sidepower bow thruster
- Kalenberg double chrome horns

## Electrical System

---

- Clarion CD/FM/AM stereo with four speakers and remote control
- Glendinning cord reel with remote for 50 amp cord set
- 12V outlet at helm
- 12V outlet on port side of nav desk

- Additional Freezer Sub Zero
- Dimmer switch overhead lights in main salon
- Dimmer switch overhead lights in fwd cabin
- Promariner battery charger

---

## Custom Options & Upgrades

---

- 15" Sharp flat screen TV w/Fahrenheit DVD/MP3 mounted on port bulkhead in a wood frame in forward cabin w/TV outlet. enabled with messenger to install to a SAT TV.
- 20" Aquos Flat screen TV w/Fahrenheit DVD install in custom cabinet w/TV inlet in std location and outlet, Made TV SAT capable.
- Main salon TV to be wired to main salon stereo speakers
- Cantalupi (Amber) Concorde bulkhead lights in lieu of standard
- All refrigerator Sub Zero in galley
- She is equipped with an important "Anchor-dragging" alarm-repeater in the master stateroom. It responds to the starboard chart plotter, and has its own volume control.

---

## Mechanical Equipment

---

- Total Power: T-500HP Cummins diesels QSC 8.3M (upgrade over standard 440 Yanmars. Includes Smartcraft displays, synchronizer and ETS controls. 305 hours.
- Onan 11.5 KW genset includes sound shield
- Side Power bow thruster Model SP75T
- 1 - 16K BTU AC/HT, 2 - 12K BTU AC/HT systems
- Reverso oil change system
- U-Line ice maker in cockpit wet bar

---

## Plumbing

---

- Incremental tank guage on head
- Hot and cold transom shower
- Salt water wash down fore and aft
- Fresh water wash down forward
- Shore water system w/filter
- Single Seagull water purifier galley cold water
- Single Seagull water purifier ice maker

---

## Additional Equipment & Information

---

- Custom cockpit canvas extension form hardtop

- 45LB CQR with chain and rode
- Stainless steel bow rail leads to cockpit
- Stainless steel handrails
- Black dock lines
- Side name boards
- Running lights
- 5 opening windows in salon
- 6 opening hatches
- Cockpit shower with Hot and cold
- Cockpit wet bar with sink
- Cockpit ice maker U-line
- Swim platform with swim ladder
- 4 Folding Cockpit Chairs
- Folding Cockpit Table
- 6 new life jackets
- Fenders

## Disclaimer

---

While we attempt to display current and accurate data, this listing may not reflect the most recent transactions or may contain occasional data entry errors. Selling agent makes no warranties, express or implied, regarding the content or availability of the products described herein. All inventory listed is subject to availability and prior sale. Please consult selling agent for details. Prices are quoted for the USA only and may not include transportation, taxes, or other applicable charges. Photographs may be representative only and may vary somewhat from the actual items offered for sale. We will not be responsible for inaccurate data obtained from our site. Please check with your local dealer to ensure that you have the latest information available. Information on this web site could include technical inaccuracies or typographical errors. Changes may be periodically made to the information or the products herein. Questions or comments regarding these policies may be directed to website hosting agent.

## Exclusions

---

Owner's personal belongings.

## Disclaimer

---

The Company offers the details of this vessel or yacht in good faith but cannot guarantee or warrant the accuracy of this information nor warrant the condition of the vessel. A buyer should instruct his representatives, agents, or his surveyors, to investigate such details as the buyer desires validated. This vessel or yacht is offered subject to prior sale, price change, or withdrawal without notice.

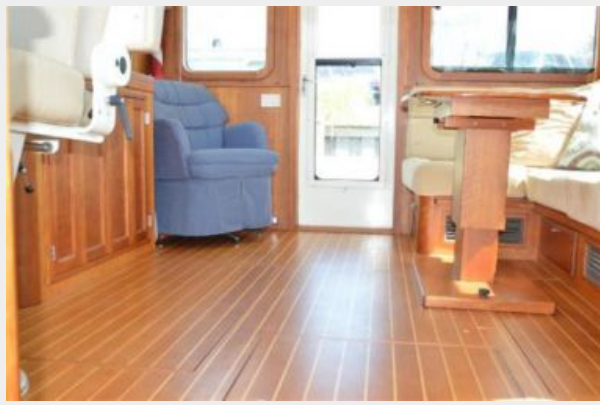


# PHOTOS



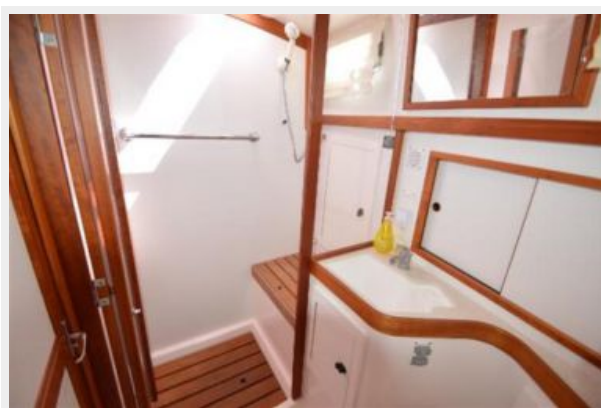






















# CONTACTS

---

Andrey Shestakov, leading yacht broker of the sales department of Shestakov Yacht Sales Inc. Shestakov Yacht Sales Inc., the official representative of the Miami/Fort Lauderdale FL headquarters.

## Contact details

---

Email: **andrey@shestakovyachtsales.com**

Web: [shestakovyachtsales.com/en/](http://shestakovyachtsales.com/en/)

## Telephones

---

USA: **+1(954)274-4435**

## Office hours

---

Monday – Saturday: **9:00 - 21:00 EDT**

Sunday: **closed**

## Address

---



Harbour Towne Marina, 850 NE 3rd St,  
STE 213, Dania, FL 33004