

LOOSE ENDS — DELTA



Builder: DELTA

Year Built: 1998

Model: Motor Yacht

Price: PRICE ON APPLICATION

Location: United States

LOA: 124' 0" (37.80m)

Beam: 25' 10" (7.87m)

Min Draft: 6' 5" (1.96m)

Max Draft: 6' 10" (2.08m)

Our experienced yacht broker, Andrey Shestakov, will help you choose and buy a yacht that best suits your needs **LOOSE ENDS — DELTA** from our catalogue. Presently, at Shestakov Yacht Sales Inc., we have a wide variety of yachts available on our sale's list. We also work in close contact with all the big yacht manufacturers from all over the world.

If you would like to buy a yacht **LOOSE ENDS — DELTA** or would like help answering any questions concerning purchasing, selling or chartering a yacht, please call **+1(954)274-4435**

TABLE OF CONTENTS

TABLE OF CONTENTS	2
SPECIFICATIONS	5
Overview	5
Basic Information	5
Dimensions	5
Speed, Capacities and Weight	5
Accommodations	6
Hull and Deck Information	6
Engine Information	6
DETAILED INFORMATION	7
Layout	7
Main Salon	7
Master Stateroom & Head	8
VIP Stateroom & Head	8
Guest Staterooms & Heads	9
Galley	9
Flybridge	10
Skylounge	10
Bow & Stern	11
Aft Deck	11
Deck Equipment	11
Crew Quarters	12
Laundry	12
Engine & Mechanical	12
Electronics & Navigational Equipment	14
Electrical System	15
Safety & Fire Protection	16
Interior Safety Lock	16

Alarms	17
Remarks	17
Replacement / Repair List April 5, 2015 Forward	17
Exclusions	20
Disclaimer	20
PHOTOS	21
Main Salon	21
Main Salon	21
Dining	21
Dining	21
Day Head	21
Foyer - Staterooms	21
Foyer - Staterooms	22
Master Stateroom	22
Master Stateroom	22
Master Stateroom Head	22
Master Stateroom Head	22
Master Stateroom Head	22
Starboard Stateroom	23
Starboard Stateroom Head	23
Port Stateroom	23
Port Stateroom Head	23
Starboard Companionway	23
On-Deck VIP Stateroom	23
VIP Stateroom Head	24
Port Companionway	24
Sky Lounge	24
Sky Lounge	24
Sky Lounge	24

Sky Lounge Head	24
Helm	25
Helm	25
Layout - LOOSE ENDS	25
Helm	25
CONTACTS	26
Contact details	26
Telephones	26
Office hours	26
Address	26

SPECIFICATIONS

Overview

The 124' Delta motor yacht was an upgrade and evolution to the 122' Delta. With a higher bow and more fuel capacity, these yachts have proven to be capable ocean cruising vessels.

LOOSE ENDS, built as Scot Free, is the second vessel in the successful 124' series.

Having crossed the Atlantic six different times (with the aid of bladder tanks), she is a testament to the quality and stout build of a Delta motor yacht. LOOSE ENDS is equally at home in the Med as she is in the shoal waters of the Bahamas. Equipped with a hydraulic telescoping stern passerelle, shore power conversion unit, walk-around decks and plenty of outdoor space, she makes for an ideal cruising boat. The current owners enjoy the yacht with family and friends and also offer the yacht for charter.

Basic Information

Category: Motor Yacht	Sub Category: Tri-Deck
Model Year: 1998	Year Built: 1998
Country: United States	Fly Bridge: Yes

Dimensions

LOA: 124' 0" (37.80m)	Beam: 25' 10" (7.87m)
Min Draft: 6' 5" (1.96m)	Max Draft: 6' 10" (2.08m)

Speed, Capacities and Weight

Water Capacity: 1100 Gallons	Holding Tank: 740 Gallons
Fuel Capacity: 8300 Gallons	

Accommodations

Total Cabins: 4

Total Berths: 4

Sleeps: 8

Total Heads: 5

Captain Cabin: True

Crew Cabin: 3

Crew Heads: 3

Hull and Deck Information

Hull Material: Fiberglass

Engine Information

Engines: 2

Manufacturer: Detroit Diesel

Model: 16V92TA

Fuel Type: Diesel

DETAILED INFORMATION

Layout

LOOSE ENDS sleeps 8 owners and guests in 4 staterooms. Crew accommodations include 6 berths and 3 heads with a crew mess forward.

Upon entering the salon from the aft deck, or owners entrance starboard main deck, there is a large, bright interior, 7'2" headroom, large picture windows, and honey colored steamed beech woodwork with maple burl inlays. A formal bar is located aft starboard of the salon and a comfortable seating area to port and forward. A pop-up 42" television is starboard.

Forward and divided by a large storage banquette featuring graceful wooden columns, is the formal dining salon which features comfortable seating for 8, with additional space afforded by a leaf in the dining table. Easy access to the on-deck, eat-in galley is to port forward, with access to the day head and VIP stateroom to starboard forward.

The attractive open tread staircase amidship leads up to the sky lounge and down to the lower guest foyer. The foyer on the lower level leads to the full-beam king master forward with a full beam his and her head including a Jacuzzi tub and shower with magnificent Rojo Allicante marble walls, floor, and countertops.

Two identical guest staterooms are located aft, each with a queen berth and en-suite cashew rose and crema marfil marble heads, new entertainment systems, and spacious cedar closets.

A guest laundry is located in a closet in the foyer with a separate fire extinguishing system. On the main level is a VIP stateroom with a king berth. The VIP features an en-suite head with a marble lined stall shower.

Main Salon

Upon entering the main salon from the aft deck, there is an L-shaped bar with six chairs to starboard with an L-shaped seating area just forward and opposite. The bar has an icemaker, wine cooler, and refrigerator. There are two sofas and a recliner and 7'2" headroom throughout the vessel. The dining area is forward of the salon and provides ample seating for eight.

- Dining table chairs; new 2015
- Carpet throughout boat; new 2015
- Occasional chair in salon recovered
- Sofa cushions re-stuffed; 2015
- Bar stools re-cushioned; 2015
- 42" Samsung pop-up plasma television with custom cabinetry; 2015
- DVD player; new
- Iomage hard drive with 1000 movies connected in salon
- Icemaker; new

Master Stateroom & Head

The full-beam master stateroom is forward amidship and offers a host of amenities, including a king berth, large walk-in closets, a settee and a complete entertainment system. The luxurious marble his and her heads are joined by a large Jacuzzi tub and shower. There is an escape hatch into the forward crew quarters behind a mirror on the port side of the master head.

- New bedding; 2015
- All new A/V; 2015

VIP Stateroom & Head

- On-deck VIP stateroom
- Queen berth
- New bedding; 2015
- Walk-in closet
- En-suite head with stall shower
- Refrigerator

- All new A/V; 2015

Guest Staterooms & Heads

- (2) Island queen guest staterooms
- The guest staterooms are mirror images, each comfortably appointed with steamed beech woodwork with maple burl inlays and accents
- New bedding; 2015
- (2) Nightstands
- Desk and credenza with entertainment system
- (2) Large, opening portlights
- Walk-in cedar-lined closets
- En-suite marble-lined heads with stall showers

Galley

- L-shaped seating
- Upholstery on dinette; new 2015
- Miele dishwasher; new 2011
- (2) Sub-zero freezer drawers
- (2) Miele ovens; new 209
- (2) Elkay stainless steel sinks
- 5-Burner range top; new 2015
- (2) InSinkErator garbage disposals
- Amana microwave
- Custom cabinets added; new 2010
- Exhaust hood and fan
- Small stew refrigerator; new 2009

- 24" Samsung flat screen television; new 2009
- Miele dishwasher in crew quarters
- GE refrigerator/freezer in crew quarters
- Sharp microwave oven in crew quarters

Flybridge

- Cushions; new 2015
- (2) New - Boat deck varnished dining tables
- Sub-zero refrigerator and icemaker
- Low profile deck freezer

Skylounge

The skylounge is accessed via the central staircase from the main salon. With teak paneling and teak and holly sole, the skylounge features large picture windows, perfect for relaxing and watching the views. There is an adjacent day head that services the skylounge.

The pilothouse is accessed forward from the skylounge and features a dinette area, ideal for underway cruising.

The outdoor dining area is located through aft double doors and guests can enjoy dining under a sun shade. There is a grill, 5-person hot tub, flybridge access, and access to the aft boat deck aft. The stairwell from the boat deck down to the aft deck makes crew movement between decks unobtrusive.

- All new A/V equipment; 2015
- Floor revarnished; 2009
- Refrigerator
- Ice maker

Bow & Stern

The foredeck is accessed via the teamed walk-around side decks, port and starboard. The foredeck features a built-in seating area, steps with safety rails onto the trunk-cabin, with a sun pad, and bosuns storage locker. Dual Anchors.

The transom features an integral teamed swim platform, with hot and cold shower, swim ladder, stainless steel cleats for tender, watertight transom door to the lazarette, and port and starboard stairwells up to the aft deck.

Aft Deck

The aft deck is accessed from the centerline stern passerelle or via the built-in steps to port and starboard from the integral swim platform. The covered aft deck, with teak decking, comfortably seats 8 to 10 for dining.

There is access to the side decks, port and starboard, and engine room via the hatch and ladder, for use while underway (keeping the transom watertight door closed). There is access to the boat deck via a circular stairwell and access to the main salon through double doors.

Deck Equipment

- (2) Anchor windlass Muir V5000 ; rebuilt 2015
- (2) 550# anchors with automatic fresh water wash; (2) 600 ft 16mm chain
- (2) Muir VC4000, 24v DC warping capstans aft deck
- Bauer Utilus 10 SCUBA compressor; 225 bar 3300 psi
- Nautical Structures telescoping crane EZ-2500 EX (2,500#)
- Marquipt R2 telescoping stern passerelle; new teak 2015
- Marquipt side boarding tide ride ladder with extension and 4 teak handrails
- Delta swim ladder
- Kahlenberg air horn
- Stainless steel outdoor grill

- 18ft Novurania dinghy with 08' 115 hp Yamaha; approximately 100 hours
- ACR remote RCL-600A search light
- Sea-Doo wave runner
- 14' Sunfish sailboat
- 5-Person Jacuzzi on bridge deck
- Sun pads on bow; new 2015
- Mast and side deck CCTV camera security system
- Transom door; rebuilt 2015

Crew Quarters

- (3) Crew cabins
- (3) Crew heads
- Television; new 2009
- VHF; new 2008
- Television in captain's quarters; new
- CCTV in captain's quarters; new

Laundry

- Clothes dryer; new
- Clothes washer; new
- Asko washing machine in crew quarters; new
- Asko dryer in crew quarters; new

Engine & Mechanical

Engine Hours

- Port engine: 1080 hours SMOH

- Starboard engine: 180 hours SMOH

Fuel Burn

- 1320 RPM 10 Kts 40 GPH total
- 1500 RPM 10.7 Kts 48 GPH total
- 1700 RPM 12.5 Kts 68 GPH total
- 1900 RPM 14 Kts 94 GPH total

Engines have a custom designed (Joe Smullen) mounting system for the engines achieving extraordinary quiet and vibration-free operation.

- All alternators replaced; 2015
- Water tank: 1,100 USG plus (2) 1,200 GPD water makers; new 2015
- Lube oil: 60 USG
- Dirty lube oil: 60 USG
- Gray Water: 390 USG
- Black water: 720 USG (plus MSD system)
- (2) 65Kw Northern Lights generators (upgraded) both in sound shields and double shock mounted; rebuilt 2015
- (5) New 5-ton Rich Beers A/C and Marine Air handling system; updated and upgraded 2015
- Naiad stabilizers Model 404; updated and upgraded 2010 with Koop Nautic roll compensation control head; 16' fins; pulled and reset 2015
- Alfa Laval MAB 203 fuel oil centrifuge; essential for long distance cruising
- Van air compressor
- Servo Watch alarm system; upgraded 2005
- Water heater double capacity; 2009
- Water softener added 2009; helps tremendously on exterior window cleaning

- Engine room tool chest; 2010
- PTO's off both engines with crossover American 80 hp bow thruster, control stations pilothouse, and flybridge; rebuilt 2015
- Oil transfer system
- ZF 1950 transmission 2.448:1 reduction
- (4) Automatic bilge pumps
- 10 Kohler fresh water flush WC's
- All water and hydraulic lines and pumps replaced or rebuilt 2015
- Power steering and rams rebuilt
- Hull monitoring system
- D'Angelo exhaust system
- CO2 system for engine room and lazarette

Electronics & Navigational Equipment

- Simrad AP70 auto-pilot (complete system); new
- C-Plath Navigat X mod X gyro compass linked to C-Plath NaviPilot V autopilot
- Simrad 714 color X-band radar 120 mile
- Furuno S-Band radar with repeater on flybridge
- Electronic chart plotter connected to (2) plotters
- (1) Northstar 952X GPS in pilothouse
- (1) Garmin 741XS GPS map
- ICOM IC-M802 SSB radio
- Furuno color depth sounder
- (2) Standard spectrum VHF radios; (1) Furuno FM 3000 VHF; (2) ICOM GM1600 survival VHF(GMDSS)
- Standard Horizon VHF on flybridge; JMC VHF in crew mess
- Computer with scanner and printer

- Autohelm GPS
- Servo watch monitoring system with Headhunter tank monitoring
- Raymarine ST60 wind anemometer with ST80 wind and depth repeaters
- MiFi with internal WiFi system
- Intelian S80HD television satellite dish; new 2015
- Panasonic EXT7885 12-line 900 MHz telephone system
- (12) Panasonic KXT 7130 speaker phones
- (4) Panasonic KXT 7135 12-line speaker phones with caller ID
- SART rescue beacon
- Intelian VSAT system; new 2015
- VIE 17" monitor for S Band radar
- Nauticomp 12" electronic charts monitor
- Depth and wind repeaters
- Gyro repeater and autopilot
- Sea Hail - hailing system
- New anti-glare film applied to windshield, 2015

Electrical System

- 208v, 3-phase, 60 cycle AC electrical system (US spec)
- 24v DC emergency back-up systems
- (2) 65Kw Northern Lights generators with sound shields; both rebuilt 2015
- Atlas shore power converter system with smart box
- (4) Sentry battery chargers
- Marine batteries; new 2013

Vessel is capable of plugging into shore power worldwide. A 3-cycle vessel is more efficient to

run on shore power.

Safety & Fire Protection

- (2) 2005 Revere Solas 8-man life rafts
- 2006 Revere 8-man Coastal MKIII portable life raft
- (6) Life rings
- Exterior life jackets; 14 adult; 7 child
- Interior guest life jackets; 8 (2 in each cabin); 6 crew life jackets (2 in each cabin)
- (6) CO2 inflatable life jackets; 3 adult life jackets; in tender
- SART rescue beacon
- (2) Pains Wessex man overboard 360 lifebuoy marker; attached to life rings
- ACR - EPIRB
- (7) Drager Parat-C smoke hoods
- (4) Drager Quick Air-10 emergency breathing devices (EEBD)

Interior Safety Lock

- (4) Pains Wessex rocket propelled heaving lines
- Drager self-contained breathing apparatus (SCBA)
- Drager Parac-C smoke hood
- (2) Oxygen cylinders, radar reflector, medical kit, grab bag
- 15 hour ACR buoy rescue light
- Fire fighting
- Ansul fixed Co2 system (5 bottles, 200 cu ft per bottle)
- (6) 3kg ABC portable fire extinguishers
- (11) 6kg AC portable fire extinguishers
- (5) 9L, AB (foam) portable fire extinguishers

- Fire pump in engine room with various fire hose outlets on deck

Alarms

- Servo Watch System
- (4) RAID Unit Monitoring panels at pilothouse, crew mess, engine room, and flybridge
- Security
- Panasonic WV-CU 254 system controller with 15' tri-view CCTV monitor in pilothouse
- CCTV Panasonic cameras, port and starboard decks and aft deck
- Panasonic WV-CW964 masthead camera
- Panasonic CCTV camera in engine room
- Additional CCTB monitors in crew mess and captain's cabin

Remarks

LOOSE ENDS is superbly designed for comfortable, relaxed cruising whether it's Alaska, the Caribbean, or the Med. LOOSE ENDS has made six trans-Atlantic crossings.

- LOOSE ENDS went through a major refit in 2015
- New décor; 2015
- Just completed five year St. Vincent's commercial renewal survey
- Hull and superstructure repainted; 2006
- Portions of the superstructure and all inner bulwarks and flybridge hand-roll painted; 2008 and 2015
- Displacement: 178 long tons (half load)
- Range: 2,200 nautical miles at 10 knots

Replacement / Repair List April 5, 2015 Forward

- Rebuilt both generators

- Installed (2) new water makers; 1200 GPD
- Installed new waste treatment system
- Completely replaced and upgraded all A/V equipment
- Replaced and upgraded the satellite television system
- Installed new VSAT antenna and electronics
- Replaced and upgraded autopilot system
- Installed new Furuno AIS and Furuno gyro compass
- Installed and upgraded new Panasonic telephone system
- Replaced and upgraded guest washer and dryer
- Installed new headliners throughout yacht
- Repaired icemaker on the flybridge
- Partial upgrade to NIA stabilizer system; all electronics were replaced with new; electronics are ready for zero-speed upgrade
- Purchased and installed new wireless printer in pilothouse
- Purchased new radar monitor screen
- New interior - all new furniture, carpet, window treatments throughout
- Upgraded and installed (2) new galley sink faucets
- Replaced (2) galley refrigerator door seals
- Upgraded and repaired/replaced two fresh water pumps for ships' water supply.
- Upgraded the pressure switches and two pressure tank; new
- Replaced and upgraded main shore power circuit breakers
- Rebuilt both port/starboard/anchor windlasses.
- Re-plated both windlasses and ship's bell
- Rebuilt both the port/starboard Detroit throttle/clutch assemblies
- Installed (3) new rudder angle indicators on the flybridge port/center/starboard pilot stations
- Installed wireless LAN access points throughout, including outside areas

- Replaced the jog steering component for the wing stations on the flybridge
- Purchased and replaced the flybridge DDEC display panels with newer displays
- Completely rebuilt and/or replaced the bow thruster hydraulic assembly
- Replaced or rebuilt all A/C compressors and air handlers
- Replaced all extractor fans in the interior
- Compounded and waxed entire vessel; May, 2015
- Serviced Novurania tender Yamaha motor
- Serviced Sea-Doo jet ski
- Re-fiberglassed and painted both port and starboard rub rails
- Repainted entire transom door area
- Replaced flybridge window bra with new
- Built and installed new paddle board brackets on the starboard bow
- Serviced and/or upgraded all safety equipment
- Upgraded and replaced MSD system with new
- Replaced tank sensors for the black/gray tanks
- Inspected and cleaned both the black and gray water tanks for service
- Inspected and cleaned fuel tanks
- Replaced entire master bedroom floor
- Installed new GPS/VHF stereo on the tender
- Reupholstered crew settee
- Rebuilt all pumps in the engine room and lazarette
- Completely cleaned and organized bilge area
- Made new harness to lift tender
- Purchased new snorkel gear
- Repaired pilothouse windscreen washers
- Replaced pilothouse console GPS with new Garmin

- Rebuilt all pumps and alternators on main engines
- Rebuilt all pumps and alternators on both gen-sets
- Cleaned and reorganized all ship's files
- Made and installed all new cabinet face plates for A/V equipment
- Replaced both water makers and piping with new
- Installed (2) new make-up air systems under the flybridge helm
- Serviced passerelle on transom
- Serviced the Alpha Laval centerfuge
- Serviced all A/C equipment in the engine room
- Serviced the A/C shore power converter
- Repaired miscellaneous areas on the teak deck
- Serviced davit
- Serviced hot water tanks
- Replaced sink fixtures on the flybridge and boat deck
- Cut hole in the icemaker cabinet on the flybridge for better air cooling/circulation

Exclusions

Owner's personal belongings.

Disclaimer

The Company offers the details of this vessel or yacht in good faith but cannot guarantee or warrant the accuracy of this information nor warrant the condition of the vessel. A buyer should instruct his representatives, agents, or his surveyors, to investigate such details as the buyer desires validated. This vessel or yacht is offered subject to prior sale, price change, or withdrawal without notice.

PHOTOS

Main Salon



Main Salon



Dining



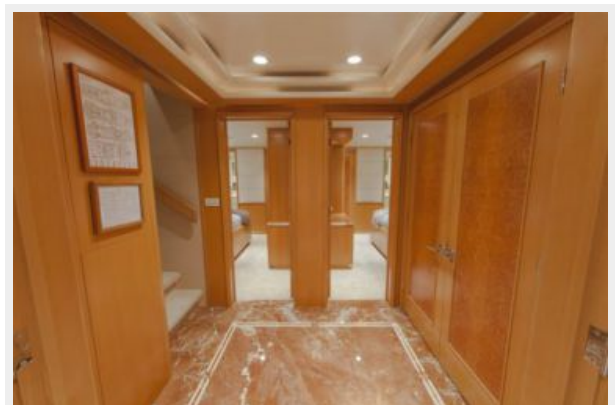
Dining



Day Head



Foyer - Staterooms



Foyer - Staterooms



Master Stateroom



Master Stateroom



Master Stateroom Head



Master Stateroom Head



Master Stateroom Head



Starboard Stateroom



Starboard Stateroom Head



Port Stateroom



Port Stateroom Head



Starboard Companionway



On-Deck VIP Stateroom



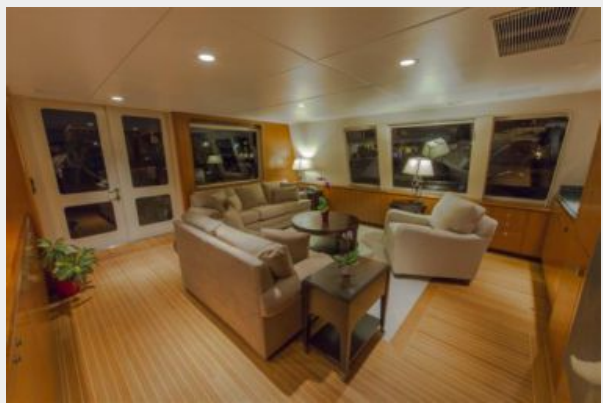
VIP Stateroom Head



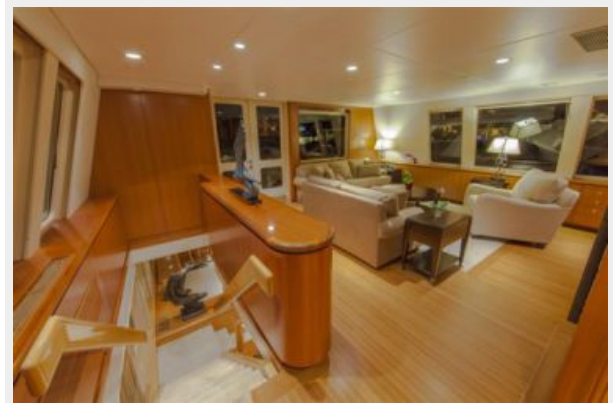
Port Companionway



Sky Lounge



Sky Lounge



Sky Lounge



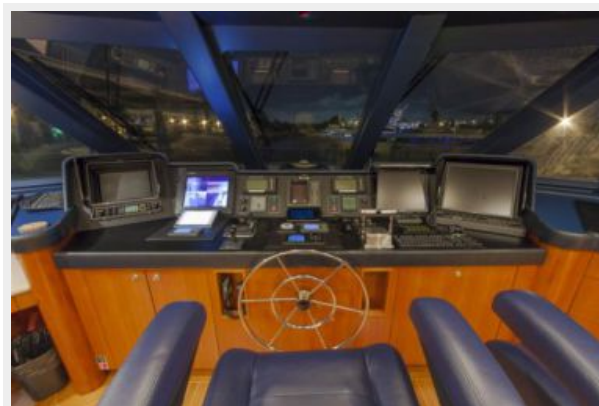
Sky Lounge Head



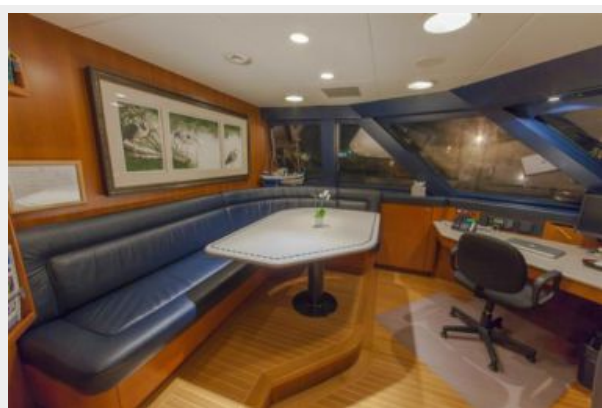
Helm



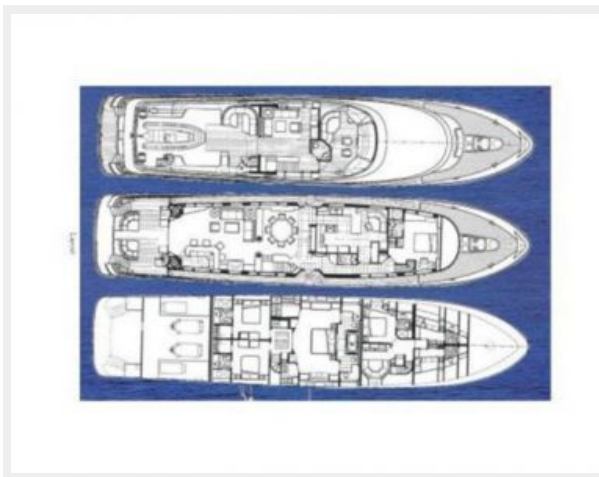
Helm



Helm



Layout - LOOSE ENDS



CONTACTS

Andrey Shestakov, leading yacht broker of the sales department of Shestakov Yacht Sales Inc. Shestakov Yacht Sales Inc., the official representative of the Miami/Fort Lauderdale FL headquarters.

Contact details

Email: **andrey@shestakovyachtsales.com**

Web: shestakovyachtsales.com/en/

Telephones

USA: **+1(954)274-4435**

Office hours

Monday – Saturday: **9:00 - 21:00 EDT**

Sunday: **closed**

Address



Harbour Towne Marina, 850 NE 3rd St,
STE 213, Dania, FL 33004