

CARVER C37 — CARVER



Судостроитель: CARVER

Год постройки: 2017

Модель: Крейсер

Цена: **ЦЕНА ЯХТЫ ПО ЗАПРОСУ**

Местонахождение: United States

Длина общая: 37' 0" (11.28m)

Ширина: 13' 0" (3.96m)

Макс. осадка: 3' 6" (1.07m)

Крейс. скорость: 30 Kts. (35 MPH)

Макс. скорость: 34 Kts. (39 MPH)

Купить Carver C37 — CARVER а также выбрать подходящую вам яхту из нашего каталога яхт вам поможет опытный яхтенный брокер Андрей Шестаков. На сегодняшний день компания Shestakov Yacht Sales Inc. имеет большое количество яхт в собственном списке продаж, а также тесно сотрудничает со всеми крупными яхтенными производителями по всему миру.

Для того чтобы купить яхту Carver C37 — CARVER а также проконсультироваться по любому вопросу связанному с покупкой, продажей, чартером яхт позвоните по телефону **+7(918)465-66-44**.

ОГЛАВЛЕНИЕ

ОГЛАВЛЕНИЕ	2
ХАРАКТЕРИСТИКИ	4
Обзор	4
Основная информация	4
Размеры	4
Скорость, вместимость и масса	5
Размещение	5
Корпус и палуба	5
Информация о двигателе	5
ПОДРОБНОЕ ОПИСАНИЕ	6
Selected options	6
Manufacturer Provided Description	6
Construction	6
Electrical	7
Propulsion	7
Freshwater and Holding system	7
Decks and Hardware	8
Safety & Navigation	8
Helm	8
Cockpit & swim platform	9
Salon	9
Galley	9
Master Stateroom	10
Head w/ separate shower	10
Guest Stateroom	11
Исключения	11
Отказ от ответственности	11
ФОТОГРАФИИ	12

C37 Coupe	12
C37 Coupe	12
C37 Coupe	12
C37 Coupe	12
Salon and galley	12
Galley	12
Salon	13
Master stateroom	13
Master head	13
Guest stateroom	13
C37 Coupe	13
Main deck layout	13
Stateroom layout	14
КОНТАКТЫ	15
Контактная информация	15
Телефоны	15
Время работы	15
Адрес	15

ХАРАКТЕРИСТИКИ

Обзор

The most spacious and comfortable 37' yacht on the water, Carver's new C37 Coupe is designed for the adventurous who refuse to sacrifice a thing. Expect superior style, comfort, performance, dependability and value. This new yacht's power package delivers a smooth, stable ride with top-end speeds approaching 40 mph. A unique hull shape and 13-foot-wide beam create an incredibly roomy interior: 6'5" headroom in the two staterooms; 6'8" in the salon.

** This price is for a fully loaded and commissioned new boat delivered to Fort Lauderdale with an extensive list of desirable factory options. The base price, (advertised by some dealers) FOB factory, is substantially less. It is our policy and standard communication procedure to disclose what the new boat truly costs, ready for you to enjoy. We are happy to supply a detailed list of costs upon request.

Offers encouraged!

DYSID:3065229

Основная информация

Тип судна: Крейсер

Модельный год: 2017

Год постройки: 2017

Страна: United States

Размеры

Длина общая: 37' 0" (11.28m)

Ширина: 13' 0" (3.96m)

Макс. осадка: 3' 6" (1.07m)

Трапы: 12' 4" (3.76m)

Длина привального бруса: 37' 8"
(11.48m)

Скорость, вместимость и масса

Крейс. скорость: 30 Kts. (35 MPH)

Макс. скорость: 34 Kts. (39 MPH)

Водоизмещение: 18500 Pounds

Вместимость воды: 90 Gallons

Вместимость сточного бака: 35 Gallons

Объем топливного бака: 250 Gallons

Размещение

Всего коек: 6

Всего ком. состава: 1

Корпус и палуба

Материал корпуса: Fiberglass

Информация о двигателе

Двигатели: 2

Производитель: Volvo Penta

Модель: D4

Тип двигателя: Inboard

Тип топлива: Diesel

ПОДРОБНОЕ ОПИСАНИЕ

Selected options

- Mercruiser 6.2L 350 HP Inboard gas engine
- Bow Thruster
- Kohler 7.5 Kw Gas Generator
- High Capacity 25,000 BTU Air Conditioning
- Overboard Discharge
- Waste and Water Monitor
- Fresh water transom washdown
- Raymarine Navigation package (Chartplotter, GPS, Sonar, VHF)
- Cockpit seat covers
- Transom Handshower
- Cockpit Refrigerator
- Cockpit Sunshade
- Salon Wood Flooring
- Carpet Runner

Manufacturer Provided Description

The most spacious and comfortable 37' yacht on the water, Carver's C37 Coupe is designed for the adventurous who refuse to sacrifice a thing. Expect superior style, comfort, performance, dependability and value. This yacht's power package delivers a smooth, stable ride with top-end speeds approaching 40 mph. A unique hull shape and 13-foot-wide beam create an incredibly roomy interior: 6'5" headroom in the two staterooms; 6'8" in the salon.

An additional interior layout design advantage? The cockpit, helm, salon and galley are all situated on one convenient level. Plus, the C37 has the most storage space you'll find in any yacht of this size. "Carver comfort" reaches new levels in the C37: a home-like stall shower, two private staterooms, an ultra-comfortable cockpit and other numerous practical amenities. If that all weren't impressive enough, the value-driven price point of the C37 once again proves that Carver gives you more yacht for less money.

Construction

- Hull and Deck: Hand-laid structural and non-structural fiberglass and core laminates bonded with infused resin.
- Hull bottom: Surface beneath the water line is bead blasted to create an optimal bonding surface for the anti-fouling paint which is sprayed onto the hull to create a smooth running bottom.

- Stringer System: Fiberglass stringers are used throughout the yacht.
- Interior bulkheads, cabinets and drawers are precision cut, hand crafted and constructed from a selection of woods and high-pressure laminates. Drawers are lined with laminate.
- Integral aluminum truss reinforcement in cabin top structure.

Electrical

- Horn, 12V single trumpet. • Lighting fixtures, 12V LED (14).
- Navigation lights (USCG/COL REG approved).
- CATV inlet.
- Battery switches on/off (1) accessory, (2) engines, (1) optional generator, (1) optional thruster.
- Digital charge distribution system. • Batteries: (2) engine, (1) accessory, (1) optional generator, (1) optional bow thruster.
- Digital Electronic Battery Chargers: (1) accessory and engine batteries, (1) optional generator and thruster batteries.
- Single AC 30 amp dockside electrical service with 50ft cord.
- Distribution Panel: AC, with circuit breakers and voltmeter/ammeter.
- Distribution Panel: 12V DC, with circuit breakers. • Zinc's: Sacrificial (1) primary (2) trim tabs (2) propeller shafts.
- Ground bonding system.
- High bilge water alarm.

Propulsion

- Volvo diesel EVC 300 HP inboard .
- Fuel Tanks: Twin, 5052 aluminum tanks hold 175 gal. (662.4 L) of fuel each. Port and starboard fuel fill deck fittings.
- Trim Tabs: Bennett Marine® stainless steel, electro-hydraulic trim tabs.
- Steering: Teleflex® SeaStar hydraulic steering.
- Helm Display: Digital LCD display showing tachometer, hour meter, oil pressure, coolant temperature, battery voltage, fuel tank level and rudder angle indicator.

Freshwater and Holding system

- Fresh Water System: Three 40 gal. (151.4 L) polyethylene tank with shore water connection and integrated pressure reduction valve.
- Fresh water fill fitting installed on walkway. Eleven gal. (41.6 L) water heater installed in engine compartment.
- On demand fresh water is delivered via a fresh water pump installed in the engine compartment.

Decks and Hardware

- Decks & Hardware • Gunwale Trim: Rigid vinyl with stainless steel inserts.
- Cleats: (2) 10in bow, (2) 10in spring line, (2) 10in stern, (2) 10in swim platform (1) 10in anchor.
- Hatch: Bow, translucent, opening with screen.
- Deck Fitting: Fuel fills (2). • Deck Fitting: Fresh water fill (1).
- Deck Fitting: Waste, pump out (1).
- Rails: Bow, 1in stainless steel top rail, 1in stanchions, welded, with stainless secondary rail.
- Grab Rails: Stainless steel.
- Engine compartment power and static ventilation located in superstructure.
- Transom Platform: Fixed w/ Swim Ladder: Under mount, starboard side of swim platform with recessed grab handle.
- Nonskid fiberglass decks.
- Vinyl ester barrier coat.
- Anti-fouling bottom paint.
- Bronze Seacocks: All underwater through hulls; double SS hose clamps.
- Nylon through-hull fittings with stainless steel caps; above waterline applications.
- Standard white gel coat for hull and deck.
- Black vinyl boot stripe.

Safety & Navigation

- Bilge Pumps: Two 1,500 gal. (5678 L) per hour automatic bilge pumps are installed, each with a manual on/off switch at the helm. A float switch for the high bilge water alarm is installed in the engine compartment and forward bilge.
- Bilge Ventilation: Four ventilator blowers are installed in the engine compartment. Each blower creates 240 CFM volume.
- CO Alarms: Monitors with alarms are installed in both staterooms and the salon.
- Engine Alarms: Engine oil pressure and water temperature alarms are installed at the helm.
- Fire Suppression System: An FE241 Fireboy® automatic fire suppression system is installed in the C43's engine compartment.
- Compass: 2.75" flush mount, illuminated Richie® Navigator compass is mounted at the helm.
- Seacocks: Marine grade bronze seacocks are used on all below the waterline thru hull openings. Nylon fittings are used on above the waterline outlets.
- Spotlight: ITT Jabsco® remote control spotlight mounted on bow rail.

Helm

- Dual helm seat, helm side adjustable.\

- Dash console, non glare.
- Engine Controls: Engine manufacturer electronic.
- Trim tab controls.
- Steering: Hydraulic.
- Engine Instrumentation: Engine manufacturer LCD display.
- Compass: Ritchie, 2.75in, illuminated.
- Steering Wheel: Sport.
- Accessory outlet, 12V (1).
- Beverage holder.

Cockpit & swim platform

- Cockpit/Transom/Swim Deck
- Self-bailing cockpit.
- Door: Hinged cabin entry, locking, black painted, flat glass.
- Courtesy lights (4).
- Lighting: Overhead in bridge overhang (4).
- Molded Steps: Access to side decks.
- Cockpit Hatch (1): Engine room access, hinged, gas shock.
- Cockpit Floor Storage (1): Storage box.
- Transom Door: Transom storage locker with dockside connections and shower option. Accessible through cockpit seating or aft transom doors.
- Cockpit Floor: Removable for engine or generator extraction.
- Cockpit Seat: L-shaped lounge port, single seat starboard. • Switch panel for exterior lighting,
- Engine room lights. Optional underwater lights. Optional sun shade.

Salon

- Lights: (8) LED overhead, stainless steel trim.
- Entertainment Center: 32in LCD TV and Blu-Ray DVD player.
- CO detector.
- Color-coordinated starboard sofa with storage under cushions.
- Forward companion seat.
- Aft section of sofa backrest converts to allow additional cockpit seating.
- Opening Window: Port and starboard.
- Glass Sunroof with Shade: Electronic control.
- Electrical Panels: DC and AC, installed in cabinet.
- Salon Table: Hi-lo table pedestal converts to bed.

Galley

- Drawers (4).
- Storage cabinet (4).
- Flooring: Vinyl plank.
- Countertop: Solid surface.
- Sink: Stainless steel with designer faucet.
- Stove: Two burner Ceran® cook top.
- Refrigerator: Nova Cool®, Norcold®.
- AC Electrical Outlets: Two, ground fault protected.
- Lights: Overhead.
- Microwave: Convection.
- Coffeemaker storage.
- Slide-out trash below the sink.
- Access hatches to (2) in-floor storage areas.

Master Stateroom

- Sleeping: Queen size, island berth with high-density foam mattress.
- Door: Access to stateroom, locking.
- Shelves: Hull sides.
- Deck Hatch: Opening; white translucent with screen. Lights: Six LED overhead.
- Lights: Two reading.
- Storage: Port hanging locker.
- Storage: Starboard hanging locker with mirror.
- Storage: Port and starboard overhead.
- (2) AC electrical outlets, ground fault protected.
- Hull windows with blinds.
- CO detector.
- 6ft 5in headroom.

Head w/ separate shower

- Head • Enclosed Shower: Molded fiberglass floor liner, plexiglass door.
- Door: Locking.
- Lights: One LED in shower overhead. Three LED in head compartment overhead.
- Vanity Cabinet: Solid surface countertop and vessel sink, storage below.
- Mirror: Above vanity, wood framed.
- Exhaust fan.
- Electric head (fresh water flush).
- Towel bar.
- Toilet paper holder.
- AC electrical outlet (1), ground fault protected.
- Opening, screened port light (1)

Guest Stateroom

- Hanging Locker: Outboard, mirrored, illuminated, full cabin height.
- (2) AC electrical outlets, ground fault protected.
- CO detector.
- Door: Locking.
- Lights: Three LED overhead.
- Bed: Twins convert to queen with filler cushion.
- Hull windows with blinds.

Исключения

При продаже яхты исключаются личные вещи владельца.

Отказ от ответственности

Компания предоставляет описание судна или яхты добросовестно, но не может гарантировать точность этой информации, а также не ручается за техническое состояние. Покупатель должен проинструктировать своих агентов или оценщиков исследовать представленную информацию более подробно, по собственному желанию. Продажа судна или яхты, изменение цены или снятие с продажи будет происходить без предварительного уведомления.

ФОТОГРАФИИ

C37 Coupe



C37 Coupe



C37 Coupe



C37 Coupe



Salon and galley



Galley



Salon



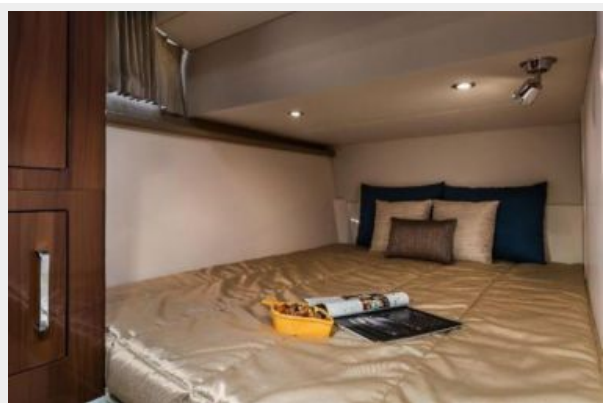
Master stateroom



Master head



Guest stateroom



C37 Coupe



Main deck layout



Stateroom layout



КОНТАКТЫ

Андрей Шестаков (Andrey Shestakov) – ведущий яхтенный брокер отдела продаж яхт и судов компании Shestakov Yacht Sales Inc. Официальный представитель Shestakov Yacht Sales Inc. для русскоговорящих клиентов в центральном офисе компании в Майами/Форт Лодердейл/Флорида/США.

Контактная информация

Email: andrey@shestakovyachtsales.com

Web: shestakovyachtsales.com

Телефоны

Краснодарский край: **+7(918)465-66-44**

США, Майами, Флорида: **+1(954)274-4435**

Время работы

Понедельник – Суббота: **9:00 - 21:00**
EDT

Воскресенье: **Закрито**

Адрес



Harbour Towne Marina, 850 NE 3rd St,
STE 213, Dania, FL 33004