

BLACK GOLD — WESTPORT



Судостроитель: WESTPORT

Год постройки: 2010

Модель: Моторная яхта

Цена: **ЦЕНА ЯХТЫ ПО ЗАПРОСУ**

Местонахождение: United States

Длина общая: 112' 0" (34.14m)

Ширина: 23' 9" (7.24m)

Макс. осадка: 5' 6" (1.68m)

Крейс. скорость: 24 Kts. (28 MPH)

Макс. скорость: 26 Kts. (30 MPH)

Купить **BLACK GOLD — WESTPORT** а также выбрать подходящую вам яхту из нашего каталога яхт вам поможет опытный яхтенный брокер Андрей Шестаков. На сегодняшний день компания **Shestakov Yacht Sales Inc.** имеет большое количество яхт в собственном списке продаж, а также тесно сотрудничает со всеми крупными яхтенными производителями по всему миру.

Для того чтобы купить яхту **BLACK GOLD — WESTPORT** а также проконсультироваться по любому вопросу связанному с покупкой, продажей, чартером яхт позвоните по телефону **+7(918)465-66-44**.

ОГЛАВЛЕНИЕ

ОГЛАВЛЕНИЕ	2
ХАРАКТЕРИСТИКИ	6
Основная информация	6
Размеры	6
Скорость, вместимость и масса	6
Размещение	6
Корпус и палуба	6
Информация о двигателе	7
ПОДРОБНОЕ ОПИСАНИЕ	8
Vessel Description	8
Highlights & Upgrades	8
Salon	8
Dining Room	9
Galley	9
Master Stateroom	10
Master Stateroom Head	10
VIP Guest Stateroom 1 - Starboard Forward	11
VIP Guest Stateroom 1 - Head	11
VIP Guest Stateroom 2 - Port Aft	11
VIP Guest Stateroom 2 - Head	12
Guest Stateroom - Starboard Aft	12
Guest Stateroom - Starboard Aft Head	12
Guest Stateroom - Port Forward	13
Guest Stateroom - Port Forward Head	13
Aft Deck	13
Pilothouse	14
Pilothouse Electronics & Navigation	15
Miscellaneous Electronic Equipment	15

Audio Video Electronics	15
Central Equipment	16
Flybridge Electronics & Navigation	16
Flybridge/Boat Deck	16
Foredeck	17
Walk-In Pantry	17
Crew Quarters & Utility Room	17
Captain & Crew Heads	18
Mechanical Systems & Engine Room	18
Electrical System	19
Deck Equipment	20
Safety Equipment	20
Exclusions	20
Исключения	20
Отказ от ответственности	21
ФОТОГРАФИИ	22
Salon Looking Aft/Dining Area	22
Salon	22
Salon Wet Bar	22
Salon Game Table Area	22
Salon Buffet Area	23
Dining Area Detail	23
Starboard Foyer	23
On-Deck Head	23
Galley	24
Galley	24
Utility Room	24
Pilothouse	24
Master Stateroom	24

Master Stateroom Bath	24
Master Stateroom Toilet Room	25
VIP Guest Stateroom #1	25
VIP Guest Stateroom #1 Head	25
VIP Guest Stateroom #2	25
VIP Guest Stateroom #2 Head	26
Starboard Aft Guest Stateroom	26
Port Forward Guest Stateroom	26
Port Forward Guest Head	26
Aft Deck Settee	27
Aft Deck	27
Boat Deck/Flybridge	27
Flybridge	27
Hot Tub with Sunpad on Boat Deck	27
Foredeck Seating	27
Electric Distribution Panel	28
Crew Lounge & Galley	28
Captain's Head	28
Captain's Quarters	28
Crew Quarters Starboard	29
Crew Head/Crew Quarters Aft	29
Engine Room	29
Engine Room	29
Utility Area	30
Layout	30
КОНТАКТЫ	31
Контактная информация	31
Телефоны	31
Время работы	31

Адрес

31

ХАРАКТЕРИСТИКИ

Основная информация

Тип судна: Моторная яхта

Подкатегория: Raised Pilothouse

Модельный год: 2011

Год постройки: 2010

Страна: United States

Регистрационный номер: 744104

Верх: Hardtop

Размеры

Длина общая: 112' 0" (34.14m)

Ширина: 23' 9" (7.24m)

Макс. осадка: 5' 6" (1.68m)

Скорость, вместимость и масса

Крейс. скорость: 24 Kts. (28 MPH)

Макс. скорость: 26 Kts. (30 MPH)

Вместимость воды: 1025 Gallons

Вместимость сточного бака: 600 Gallons

Объем топливного бака: 5500 Gallons

Размещение

Всего кают: 5

Спальные места: 10

Каюта капитана: Да

Каюты экипажа: 3

Койки экипажа: 5

Корпус и палуба

Материал корпуса: Fiberglass

Информация о двигателе

Двигатели: 2

Производитель: MTU

Модель: 16V2000

Тип двигателя: Inboard

Тип топлива: Diesel

ПОДРОБНОЕ ОПИСАНИЕ

Vessel Description

NEW TO THE MARKET! “Black Gold” features the 5-Stateroom, On-Deck Master Stateroom layout.

Highlights & Upgrades

- Only 1000 engine hours with full MTU 1000 hour service just completed February 1, 2016
- Excellent charter yacht layout with 5 staterooms featuring (2) king beds, (2) queen beds, and (1) twin bed stateroom
- Mahogany/Sapele woodwork throughout interior
- (2) VIP Suites
- Master stateroom bath, all guest stateroom baths, and on-deck head feature Toto multi-function toilets
- New design wide transom as in current 2016 112' Westports
- Air conditioned engine room
- ASEA shore power converters
- Hydraulic electric passerelle
- Headhunter MSD waste treatment system
- Kaleidescape music/movie server and player

Salon

- Fabrica ultra-plush carpeting throughout with carpet runners
- Custom stone aft salon door entry flooring
- Full satin Mahogany/Sapele cabinetry along port and starboard outboard walls with high-gloss detailing
- 47" LCD TV mounted above Mahogany/Sapele cabinetry in starboard aft corner of Salon
- Port Aft - Salon wet bar unit with sink & contemporary faucet
- Salon Wet Bar – refrigerator with icemaker
- Salon Wet Bar - stone countertops
- Salon Wet Bar - Glass & bottle Storage
- Full-size sofa to port with designer pillows
- Matching love seat facing aft
- Single wide occasional chair facing forward
- (2) Custom swivel rocker occasional chairs facing to port
- Contemporary upholstered cocktail table
- (2) Contemporary round end tables
- Contemporary wood game table with glass top

- (2) Custom club chairs for game table
- Roman shade valances with electric shades
- Custom overhead design soffit with lighting and high-gloss Mahogany detailing
- Crown molding
- Majilite headliner
- Custom decor lamp selection
- Port & Starboard companionway Foyer areas with double entry doors and custom stone flooring. Entry niche on starboard side with stone topped foyer table and mirror
- On-Deck Powder Room off starboard companionway
- Powder Room features a contemporary decor with Toto multi-function toilet, sink, Mahogany/Sapele vanity with stone countertop and mirror, designer fixtures and soap dispenser
- Surround Sound receiver with surround sound speakers & powered Sub-woofer
- Satellite receiver
- Blu Ray DVD/CD player
- Crestron touch pad controller
- iPod dock

Dining Room

- Formal Dining area with custom Mahogany and glass dining table & seating for eight
- (8) Custom contemporary dining chairs with upholstered seat & backrest
- Recessed perimeter soffit with crown molding and accent light detail overhead in dining area
- Custom light contrasting ceiling headliner
- Oval domed ceiling feature with hanging dining pendant
- Stone topped raised buffets port and starboard with lower side buffets
- Custom contemporary light fixtures on forward bulkhead
- Extra accent & dining lighting
- China, stemware, and silverware storage for 12
- Padded dining room table cover

Galley

The very efficient Euro-style Galley is located starboard forward on the Main deck with ample Mahogany/Sapele drawers and cabinets, Amtico flooring, and a complete array of full-sized appliances.

- SubZero 48" double door refrigerator freezer with ice maker and Mahogany face
- Dacor 30" stainless steel convection oven
- Dacor 5-burner stainless steel cooktop
- GE Profile stainless steel microwave/convection oven over cooktop

- Asko dishwasher with Mahogany face
- Broan trash compactor with Mahogany face
- Double flush-mount stainless steel sinks with contemporary faucet, sprayer, hot and cold water dispenser and soap dispenser
- 22" LCD TV
- Crestron Touch Pad controller
- iPod dock

Master Stateroom

The spacious On-Deck Master Stateroom is accessed from the port companionway foyer and is all the way forward. Featured is a King berth with night tables, built-in drawers and dressers, desk with upholstered chair, and full entertainment center. The Master Bath is a few steps down forward with walk-in closet, toilet/bidet room, his and hers vanities, and spacious shower room with dual shower heads.

- Custom King walk around bed with upholstered headboard and 4 drawers under bed
- Mirrors above headboard
- Recessed halogen lighting
- Indirect rope accent lighting under berth and above soffits
- Roman shades and electric blinds
- Satin mahogany/sapele wood finish with high gloss detailing
- Large on-deck windows port and starboard
- (12) Drawer mahogany/sapele dresser
- Desk with upholstered chair
- Mahogany/sapele book shelves
- (2) Night tables
- Large walk-in cedar-lined closet with auto-light and safe
- 42" LCD TV
- Kaleidescape player
- Surround sound receiver with speakers and subwoofer
- Satellite receiver
- Crestron Touch Pad control
- iPod dock

Master Stateroom Head

- His and Hers mahogany/sapele vanities (port and starboard) with ample drawers and cabinets, stone countertops, sinks, designer faucets and fixtures, and soap dispenser
- Mirror above vanities
- Toilet and bidet room with Toto multifunction toilet and Kohler bidet
- Stone flooring and shower room

- Spacious shower room with double door Euro-style frameless glass doors, dual shower heads, and seat

VIP Guest Stateroom 1 - Starboard Forward

- Custom tapered Queen bed with upholstered headboard, mirror above, assist-lift storage underneath, and (2) drawers at foot of bed
- Night table with drawers and reading lamp above
- Satin mahogany/sapele wood finish with high gloss detailing
- Double door cabinets at entryway
- Double door full-size cedar lined closet with auto-light
- (8) Drawer mahogany/sapele dresser
- Entertainment Center with storage cabinets underneath
- Indirect accent lighting above soffit
- Recessed lighting
- (2) Port light openings with screens and privacy insert
- Roman shades with blinds
- 26" LCD TV with satellite receiver
- Blu-Ray DVD/CD Player
- Crestron Touch Pad control and iPod dock

VIP Guest Stateroom 1 - Head

- Toto multifunction toilet
- Shower with Eurostyle frameless glass door
- Sink with designer faucet and soap dispenser
- Mahogany/sapele vanity with stone countertops, mirror above, and ample drawer and cabinet space
- Custom stone flooring
- Recessed Halogen lights and vanity light
- Linen cabinet

VIP Guest Stateroom 2 - Port Aft

- Custom tapered King walk-around bed with upholstered headboard, assist lift storage underneath and 2 drawers at foot of bed
- Recessed lighting
- Contemporary custom reading lamps
- Indirect accent lighting above soffit
- Cedar-lined closet w/auto light and mirror on facing
- Satin mahogany/sapele wood finish with high gloss detailing

- (2) Port light openings with screens & privacy insert
- Roman Shades and blinds
- (2) Nightstands with drawers below
- Entertainment Center with 4 drawer dresser below
- 26" LCD TV with satellite receiver
- Surround sound receiver
- Blu Ray DVD/CD Player
- Creston touch pad control and iPod dock

VIP Guest Stateroom 2 - Head

- Toto multi-function toilet
- Shower with Eurostyle frameless glass doors
- Sink with designer faucet and soap dispenser
- Mahogany/sapele vanity with stone countertops, and ample drawer and cabinet space
- Mirror above vanity
- Custom stone flooring
- Recessed Halogen lighting & vanity lighting

Guest Stateroom - Starboard Aft

- Tapered Queen berth with upholstered headboard, assist lift storage underneath, and 2 drawers at foot of bed
- Recessed Halogen lighting
- Contemporary custom reading lamps
- Indirect accent lighting above soffit
- (2) Port light openings with screens & privacy insert
- Roman shades and blinds
- Cedar-lined closet w/auto light and mirror on facing
- Satin mahogany/sapele wood finish with high gloss detailing
- Night table and 3 drawer dresser
- Entertainment center in mahogany cabinetry with 4 drawer dresser below
- 26" LCD TV with satellite receiver
- Blu Ray DVD/CD Player
- Creston touch pad control and iPod dock

Guest Stateroom - Starboard Aft Head

- Toto multi-function toilet
- Shower with Eurostyle frameless glass doors
- Sink with designer faucet and soap dispenser

- Mahogany/sapele vanity with stone countertops and ample drawer and cabinet space
- Mirror above vanity
- Custom stone flooring
- Recessed halogen lighting & vanity lighting

Guest Stateroom - Port Forward

- (2) Custom oversized wide over/under berths with drawer beneath
- Satin mahogany/sapele wood finish with high gloss detailing
- (2) Port light openings with screens and privacy insert
- Recessed lighting
- (2) Contemporary custom reading lamps
- Indirect accent lighting
- Cedar-lined closet with auto light
- Roman shades and blinds
- 8-Drawer mahogany/sapele dresser
- Large 2 door mahogany/sapele cabinet with shelves
- Double door storage locker
- Accessory display niche
- 26" LCD TV
- Satellite receiver
- Blu-Ray DVD/CD Player
- Crestron Touch Pad Controller
- iPod Dock

Guest Stateroom - Port Forward Head

- Toto multifunction toilet
- Shower with Eurostyle frameless glass doors
- Sink with designer faucet and soap dispenser
- Mahogany/Sapele vanity with stone countertop and ample drawer and cabinet space
- Mirror above vanity
- Custom stone flooring
- Recessed Halogen lighting and vanity lighting

Aft Deck

The Aft Deck of "Black Gold" features a bench type settee allowing for a comfortable and intimate gathering around a custom high-gloss teak dining table. The table can move back and forth on a Hi-Lo electric base. There are custom cushions, pillows, and covers for the settee. There are also 6 single high-gloss teak chairs with cushions and covers for additional seating. To port forward is

the aft deck wet bar with stone countertops and 3 high-gloss teak bar stools with cushions. A diagonal 42" flat screen LCD TV above the bar unit allows visibility throughout the aft deck.

- Teak decks with teak swim platform and steps
- Sink with hot & cold water - wet bar
- GE refrigerator with freezer compartment – wet bar
- Ice bin - wet bar
- Bar storage & barware cabinet
- Port & Starboard Fiberglass integral boarding doors allows for easy Aft Deck boarding
- Spiral staircase to Flybridge
- Spiral staircase to Engine Room & Crew Area
- Satellite Receiver
- (2) pairs of speakers
- Creston touch pad control
- Storage lockers located in Port & Starboard bulwarks
- Pacific Coast Marine Salon entry doors
- Pacific Coast Marine watertight door from Swim Platform to Utility/Crew/ Engine Room

Pilothouse

The Pilothouse of the 112' Westport is much more than a control and navigation station. It is an incredibly spacious room with a large settee and table for entertaining, and a room for appreciating the perfect interior visibility while underway. "Black Gold's" Pilothouse gives one the feeling of even more spaciousness through the use of neutral-toned headliner, upholstery, and carpeting without creating any glare for piloting and navigation.

- Crown low back helm chair
- Leather Settee
- Settee Table with SS grab rail
- Desk/Nav Station stool with upholstered chair
- Cabinetry above Nav station
- Sliding Hatch to Flybridge with staircase
- Control Console - leather with leather dash hoods
- Wooden 24" Destroyer type Helm station wheel
- Chart drawers adjacent to console
- Built-in mahogany bookcases on aft bulkhead
- 6" Weems & Plath ships clock & barometer
- Sunscreen cover for windshield
- Exalto windshield wipers & washers
- 15" LCD flatscreen TV
- Shared satellite signal
- Pilothouse chart lights (3)
- Pair of speakers

- Crestron touch pad control
- iPod dock

Pilothouse Electronics & Navigation

- Ritchie Globemaster F-600 Compass
- (2) Furuno FAR-2117 Radars with 19" LCD display
- Furuno FCV 1200BB-P Depth Sounder with 15' LCD Monitor
- (2) Furuno GP-150D GPS Navigator Displays
- Transas Navisailor NS3000 Navigation/Electronic Chart System with 19" LCD display
- Charts from Seattle WA to Ft. Lauderdale, FL
- (2) ICOM M604 VHF Radios
- ICOM M802 Single Side Band Radio with automatic antenna tuner
- Loudhailer integrated with VHF Radios
- B & G Digital Wind/Depth/Speed with H3000 full functional display
- SIMRAD AP-50 Autopilot System
- X-M Satellite weather running on ship's computer with OCENS WeatherNet and GRIB Explorer Software connected to FB250 SatCom
- (4) 19" NEC LCD displays, (2) 15" NEC LCD displays
- NAIAD #353 Multi-Sea II Stabilizer controls

Miscellaneous Electronic Equipment

- IntelliSea Model IS-1 Security System
- Crestron Audio/Video distribution system controlled through wireless remote pod
- Telular Cellular phone system
- Furuno RD30 Digital Depth Sounder in Captain's quarters
- Sea Tel 3004 Satellite TV System with 8 satellite receivers
- Fleet Broadband FB250 Satellite Telephone System
- Panasonic telephone System - 16 stations/10 programmable phones/18 jacks
- 100' Combo CATV telephone shore cord
- Elbex High Resolution Camera System with fixed camera on aft deck and on port and starboard side decks. Full pan/zoom/tilt camera in the engine room
- G.P.I.R.B - Northern Airborne Technology NA-S1520
- Internet Connectivity through Sat Phone with broadband router and 2 wireless remote access points for remote connection throughout boat

Audio Video Electronics

Each accommodation space is equipped with audio/video entertainment equipment which provides for a variety of entertainment choices. Audio/Video selections includes satellite based

radio and television, as well as on board sources including Blu-Ray (DVD & CD in crew areas), and a central movie server. Audio/Video distribution is controlled by Crestron system through wireless control. Control for all Audio/Video components is through Crestron programmed remote controllers. There is boat-wide UPS battery back-up for the Audio/Video components.

Central Equipment

- Kaleidescape System: 1 movie server and 5 movie players. Includes the Movie and Music License and a Lifetime Music Guide and Software Update Service.
- Kaleidescape Movie/Music Server
- Kaleidescape Four-zone Music Player

Flybridge Electronics & Navigation

- B & G Compass
- Furuno Radar repeater
- Furuno GP-150D GPS
- ICOM M604 VHF command microphone
- Loudhailer integrated with VHF Radio
- Simrad AP-50 Autopilot System - repeater
- (2) Nauticomp 19" LCD display repeaters
- Search light controls

Flybridge/Boat Deck

- WESTPORT FACTORY HARDTOP
- (2) Crown Mariner helm chairs with footrests
- Large L-shaped molded settee with cushions and storage below
- Oval high-gloss Teak dining table
- Wet Bar with stone countertop
- Four barstools and stainless steel foot rail
- Ice bin - Wet bar
- 2-Drawer stainless steel refrigerator - wet bar
- Stainless steel BBQ Grill w/hood & cover- wet bar
- Sink - wet bar
- (2) Pairs of speakers
- Creston touch pad control
- Molded in Spa/Hot tub with sun pad & storage below with lighting
- Sunpad with cushions & covers
- DAVIT: 2500 lb. Steelhead Marine CT2500 with full rotation & wireless control
- Removable chocks & lifting bridle for tender

- 15' Nautica Widebody ST tender with 90hp 4 stroke Yamaha outboard with compass, depth sounder and Raytheon 53 VHF radio
- Stainless steel rails with integrated life raft storage on port & starboard outboard sides - giving more deck space
- Kahlenberg T2-372 Air Horn
- Integral "flip up" port & starboard wing stations each with engine controls, synchronizer, jog lever, bow thruster controls, rudder angle indicator, start/stop switches
- Venturi windshield
- Full Flybridge helm station

Foredeck

- Bow sun lounge with cushions & cover
- Molded 3/4 round keyhole settee with cushions & cover
- Storage locker with 110V outlet & lights
- Speakers
- Creston touch pad control

Walk-In Pantry

The walk-in pantry is located off of the port companionway on the Main Deck level.

- Perlick Wine Cooler
- Pantry storage
- Manitowoc commercial icemaker – under counter
- Miele washer & dryer – stainless steel
- Door to Electronics Systems & AV room

Crew Quarters & Utility Room

The Crew Quarters, Utility Room, and Engine Room are accessed either by the spiral staircase which descends from the Aft Deck, or by the watertight transom door on the swim platform. Forward to Port is the spacious crew galley with engine room door forward and center. The yacht's electrical distribution panel is located starboard forward with second washer and dryer located below. Across and aft of the Galley is the L-shaped upholstered Crew Lounge with settee table. The Captain's Stateroom is to port with double bed, desk, and en-suite head and shower. The second Crew Stateroom is to starboard with over/under berths, and the third Crew Stateroom is starboard aft with over/under berths. The second and third Crew Staterooms share a head with shower. Aft to port is the utility area with dual Glendinning Cablemaster shore cord bins, freezer, Manitowac commercial icemaker, and accessory storage. The watertight transom door to the swim platform is centerline aft in this area.

- Anigre & Maple woodwork throughout crew areas
- All crew berth's with innerspring mattresses and storage below
- 110AC Recessed room lights & 24V DC reading lights
- Cedar-lined closets
- Captain's closet
- All countertops are neutral toned solid surface Corian
- Duette blinds
- Crew galley includes Perlick stainless steel built-in refrigerator, GE Profile microwave, & sink
- Galley upper & lower cabinets
- Crew Lounge entertainment center with 22" LCD TV, satellite receiver, DVD/CD player and pair of speakers, iPod dock, and Crestron touch pad control
- Captain's Quarters - 32" LCD TV, Sat Receiver, Creston touch pad remote, Furuno RD30 digital display depth finder with Smart Sensor
- 2nd & 3rd Crew Quarters -each have 22" LCD TV, DVD/CD player, Crestron touch pad controls & shared sat receiver
- Captain Quarters: nightstand, desk with chair, dresser, drawers, and safe
- Crew Quarters: drawers under berths, and wardrobe closets

Captain & Crew Heads

- Galley Maid freshwater head
- Shower with tempered glass doors
- Sinks & fixtures with soap dispenser
- Wall mirror above vanities
- Corian countertops
- Recessed room lights and vanity lights

Mechanical Systems & Engine Room

- Air conditioned engine room
- Four station MDEC controls
- Integrated station selection & shifter control
- MDEC Synchronizers
- Underwater exhaust
- American 40hp Bow Thruster with 4-station controls
- 220V Air compressor – SpeedAire 3hp with 20 gallon tank
- Fuel tank site tube level indicators
- Intellisea fuel & water tank monitoring system
- 100 Gallon gas tank under hatch in swim platform
- Sea Pro-8 fuel filters for Mains
- Sea Pro-50 fuel filters for Gens

- Fuel Transfer system with flow meter & timer
- FM200 Fire Suppression automatic & manual system in Engine Room & electrical panel
- Lube oil change system (60/gal. lube & 60/gal. waste)
- Dripless shaft logs & rudder logs
- NAIAD #353 Multi-Sea II Stabilizers with 12 sq. ft. fins
- Jastram 4-station power steering
- 24 Ton Chilled Water air conditioning system
- Make up air system
- Bilge system consists of 5 remote mounted bilge float switches and Intelisea alarms fixed bilge pump system includes (2) 230VAC pumps
- (2) Sea Recovery SRC AWC 1400 GPD watermakers
- (2) 220V AC Freshwater Pumps
- 24V Back-up Pressure Freshwater Pump
- 80 Gallon Hot Water Heater
- 38 Gallon Hot Water Heater
- Hot & Cold Shower in locker on swim platform
- Freshwater washdowns fore/aft/boat decks with quick disconnects
- HEADHUNTER MSD Treatment System for black & gray water
- Tool Box
- Bright White Engine Room paint package
- Stainless steel workbench with 4" Vice
- Storage cabinets throughout engine room
- 48" Michigan Nibral 5 Blade custom propellers
- Wheel Puller for vessel's propellers
- (4) Underwater lights
- Freshwater filtration system with 5 Micron sediment filters
- Freshwater sterilization unit - ultraviolet
- Black Diamond flooring in engine room

Electrical System

- (2) Northern Lights 65kW generators (port 1920hrs/starboard 1918hrs)
- Sound Shields for generators
- Power Take Offs on both generators
- Generator remote start/stop in Pilothouse
- (2) ASEA 36Kva 60Hz, single or 3 Phase Shore Power Converters
- (1) Power conditioner for audio/video power and backup supplies(1) Frequency converter for dedicated 50 Hz outlets
- (2) 100 AMP 240V Single Phase/208V-3 Phase shore power cords with Glendenning Cablemaster electric reels
- (2) 100 AMP Westport/Acme/WPSY Isolation Transformers with 1-step automatic voltage adjustment
- Charles Smart-Y 100 Shore Adapter

- IntelliSea Model IS-1 Vessel Information and Control System for bilge pumps, gray water pumps, black water tanks, 14 heat sensors, 13 smoke alarms, 4 CO alarms, vessel security system, AC voltage supply, tank levels, and BBQ grill lid.
- ALL AGM cell type batteries throughout
- (4) Battery Chargers

Deck Equipment

- Alexseal Westport white paint on hull and topsides
- (2) VWC 4500# Maxwell hydraulic winches with band brakes
- Dual Poole style 300 lb. anchors with polished stainless steel anchor plates
- 5/8" Chain rollers, stoppers, and devil's claws
- (1) 250' & (1) 350' 5/8" chain for 2 anchors
- Anchor chain wash-down system
- (2) Stern Maxwell 2200# 24V DC capstans
- Fenders, fender hangers & cleats, dock lines
- 4 Step swim ladder attaches to Swim Platform
- Carbon Fiber 7-step Sea Stairs with handrail
- Passerelle – hydraulic/electric
- Carlisle Finch 200 Watt Xenon Searchlight with dual controls
- 100 Gallon gasoline fuel tank with hose and nozzle, located under the hatch centered on the swim platform

Safety Equipment

- (2) 8-Man Zodiac life rafts mounted on port & starboard boat deck rails creating more deck space
- Life Preservers, 2 ring buoys, flares, ship's bell
- Medical kit
- Fire Suppression System (see mechanical section)
- Fire extinguishers
- GPIRB – Northern Airborne Technology NA-S1520

Exclusions

Exclusions are to include but are not limited to owner's personal items, Jet Ski and Port & Starboard "Black Gold" Name Boards. A detailed list will be provided at the time of sale, upon written request.

Исключения

При продаже яхты исключаются личные вещи владельца.

Отказ от ответственности

Компания предоставляет описание судна или яхты добросовестно, но не может гарантировать точность этой информации, а также не ручается за техническое состояние. Покупатель должен проинструктировать своих агентов или оценщиков исследовать представленную информацию более подробно, по собственному желанию. Продажа судна или яхты, изменение цены или снятие с продажи будет происходить без предварительного уведомления.

ФОТОГРАФИИ

Salon Looking Aft/Dining Area



Salon



Salon Wet Bar



Salon Game Table Area



Salon Buffet Area



Dining Area Detail



Starboard Foyer



On-Deck Head



Galley



Galley



Utility Room



Pilothouse



Master Stateroom



Master Stateroom Bath



Master Stateroom Toilet Room



VIP Guest Stateroom #1



VIP Guest Stateroom #1 Head



VIP Guest Stateroom #2



VIP Guest Stateroom #2 Head



Starboard Aft Guest Stateroom



Port Forward Guest Stateroom



Port Forward Guest Head



Aft Deck Settee



Aft Deck



Flybridge



Boat Deck/Flybridge



Hot Tub with Sunpad on Boat Deck



Foredeck Seating



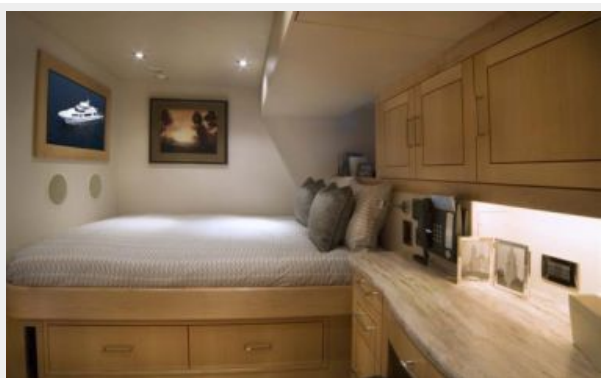
Crew Lounge & Galley



Electric Distribution Panel



Captain's Quarters



Captain's Head



Crew Quarters Starboard



Crew Head/Crew Quarters Aft



Engine Room



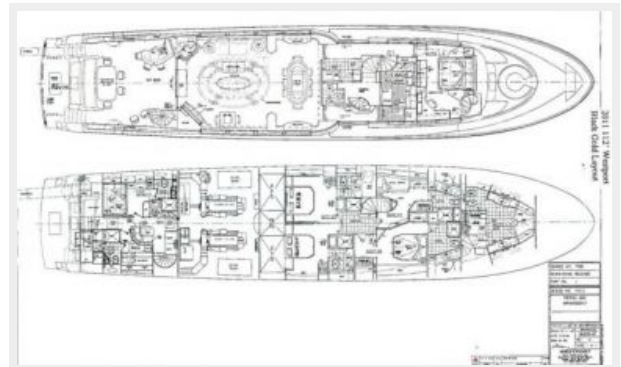
Engine Room



Utility Area



Layout



КОНТАКТЫ

Андрей Шестаков (Andrey Shestakov) – ведущий яхтенный брокер отдела продаж яхт и судов компании Shestakov Yacht Sales Inc. Официальный представитель Shestakov Yacht Sales Inc. для русскоговорящих клиентов в центральном офисе компании в Майами/Форт Лодердейл/Флорида/США.

Контактная информация

Email: andrey@shestakovyachtsales.com

Web: shestakovyachtsales.com

Телефоны

Краснодарский край: **+7(918)465-66-44**

США, Майами, Флорида: **+1(954)274-4435**

Время работы

Понедельник – Суббота: **9:00 - 21:00**
EDT

Воскресенье: **Закрито**

Адрес



Harbour Towne Marina, 850 NE 3rd St,
STE 213, Dania, FL 33004