

STRESS RELEASE — VIKING



Судостроитель: VIKING

Год постройки: 2011

Модель: Катер для спортивной рыбалки

Цена: ЦЕНА ЯХТЫ ПО ЗАПРОСУ

Местонахождение: United States

Длина общая: 76' 0" (23.16m)

Ширина: 20' 3" (6.17m)

Макс. осадка: 5' 6" (1.68m)

Купить **Stress Release — VIKING** а также выбрать подходящую вам яхту из нашего каталога яхт вам поможет опытный яхтенный брокер Андрей Шестаков. На сегодняшний день компания **Shestakov Yacht Sales Inc.** имеет большое количество яхт в собственном списке продаж, а также тесно сотрудничает со всеми крупными яхтенными производителями по всему миру.

Для того чтобы купить яхту **Stress Release — VIKING** а также проконсультироваться по любому вопросу связанному с покупкой, продажей, чартером яхт позвоните по телефону **+7(918)465-66-44**.

ОГЛАВЛЕНИЕ

ОГЛАВЛЕНИЕ	2
ХАРАКТЕРИСТИКИ	5
Основная информация	5
Размеры	5
Скорость, вместимость и масса	5
Размещение	5
Корпус и палуба	5
Информация о двигателе	6
ПОДРОБНОЕ ОПИСАНИЕ	7
Salon	7
Galley	7
Companionway	7
Master Stateroom	8
Master Head	8
Port VIP Stateroom	8
Port Forward Stateroom	8
Forward Stateroom	8
Forward Head	9
Starboard Stateroom	9
Starboard Head	9
Enclosed Flybridge	9
Electronics & Navigational Equipment	10
Engine Room & Mechanical Equipment	10
Cockpit	11
Deck & Exterior	11
Remarks	11
Exclusions	11
Исключения	11

Отказ от ответственности	12
ФОТОГРАФИИ	13
Staircase to Flybridge	13
Salon	13
Galley	13
Galley	13
Galley	13
Dinette	13
Pantry Storage	14
Pantry Storage	14
Day Head	14
Master Stateroom	14
Master Stateroom	15
Master Stateroom	15
Master Head	15
Master Stateroom	15
Port Forward Guest Stateroom	16
Port Forward Head	16
Forward Guest Head	16
VIP Forward Stateroom	16
Port VIP Stateroom	17
Starboard Guest Stateroom	17
Starboard Guest Stateroom	17
Starboard Guest Head	17
Enclosed Flybridge	17
Enclosed Flybridge	17
Helm Electronics	18
Helm Electronics	18
Helm Electronics	18

Helm Electronics	18
Aft Station Controls	18
Aft Station Controls	18
Cockpit	19
Cockpit	19
Engine Room	19
Engine Room	19
Engine Room	19
Engine Room	19
Engine Room	20
Engine Room	20
Engine Room	20
Engine Room	20
Stress Release	21
КОНТАКТЫ	22
Контактная информация	22
Телефоны	22
Время работы	22
Адрес	22

ХАРАКТЕРИСТИКИ

Основная информация

Тип судна: Катер для спортивной рыбалки

Подкатегория: Convertible

Модельный год: 2011

Год постройки: 2011

Страна: United States

Размеры

Длина общая: 76' 0" (23.16m)

Ширина: 20' 3" (6.17m)

Макс. осадка: 5' 6" (1.68m)

Скорость, вместимость и масса

Водоизмещение: 136200 Pounds

Вместимость воды: 425 Gallons

Вместимость сточного бака: 255 Gallons **Объем топливного бака:** 2945 Gallons

Размещение

Всего кают: 5

Корпус и палуба

Материал корпуса: Fiberglass

Информация о двигателе

Двигатели: 2

Производитель: MTU

Модель: 16V2000

Тип двигателя: Inboard

Тип топлива: Diesel

ПОДРОБНОЕ ОПИСАНИЕ

Salon

- Electric salon door opener
- Amtico floor at entrance
- Teak molded staircase to enclosed bridge
- Day head with granite vanity top copper sink and vaccu flush head
- L-shaped ultra leather sofa with storage to starboard
- Cocktail table hi lo
- Hunter Douglas silhouette blinds
- Scottsman Icemaker
- Large bar with bottle storage
- Dimmers on all lights
- Carpet runners
- 55" LCD TV
- Bose lifestyle 48 home theater system

Galley

- Island galley with granite counter tops
- (3) Bar stools
- Dinette with moppa burl wood table
- Amtico floor in galley and dinette extended to bar area
- (2) Sub-zero refrigerator under counter units and one freezer unit (6 drawers total)
- Stainless steel sink with Grohe fixtures
- Trash compactor
- Dish washer
- Large 4-burner electric cook top
- Down draft exhaust fan
- Convection microwave
- Large walk in pantry forward of galley
- Wine cooler in pantry

Companionway

- Washer & dryer
- Linen closet
- Padded walls with teak inserts

Master Stateroom

- Full beam master stateroom
- Island king size bed
- Night table with reading lamps
- Carpet flooring
- His and hers hanging closets
- His and hers drawer units
- Ultra leather sofa
- Desk with makeup drawer and seat stool
- Port lights to bring exterior light into stateroom
- 40" LCD TV
- Sound bar entertainment system
- Ensuite head

Master Head

- Granite vanity tops
- Teak cabinets
- Amtico flooring
- Vacu flush head
- Large glass encased shower with Grohe fixture

Port VIP Stateroom

- Queen island bed with night tables
- Drawers under bed
- 19" Flat screen TV
- DVD player
- Teak cabinets
- Private access to guest head

Port Forward Stateroom

- Upper and lower bunks
- Hanging closet
- Access to guest head

Forward Stateroom

- Queen island bed
- Overhead storage lockers
- Hanging closet
- 26" LCD TV
- DVD player
- Large en suite head

Forward Head

- Granite vanity tops Amtico flooring
- Vaccu flush head
- Large stall shower with one piece glass door and Grohe fixture

Starboard Stateroom

- Upper and lower bunks
- (2) Hanging closets with drawers
- 19" LCD TV
- DVD player
- Large en suite head

Starboard Head

- Granite vanity tops
- Teak cabinets
- Amtico flooring
- Vaccu flush head
- Large stall shower with one piece glass door and Grohe fixture

Enclosed Flybridge

- Air conditioned
- L shape sofa with sleeper bed
- Cocktail table
- Stidd leather captain chair
- Ultra leather jump seats
- Bar with sink
- LCD TV on lift mechanism
- Sub Zero refrigerator
- Ceramic window tint for heat rejection and UV protection

- Aft control station for docking
- Aft sitting outside with storage underneath
- Center ladder to tower

Electronics & Navigational Equipment

- Garmin 7215 GPS
- Furuno Nav Net 3D Black Box processor
- Furuno 12 kw radar with 6' open array antenna
- Furuno Nav net fish finder
- (2) 19" KEP screens
- 15" KEP screen
- Simrad autopilot interfaced with VIPER steering
- (2) Icom 604 VHF
- Cell phone trasciver Tellular
- Wifi extender system
- CCTV cameras, 2 engine room, salon and cockpit
- ACR spot light
- KVH M5 Sat TV antenna
- Furuno RD30 depth sounder
- VHF command mic on tower and cockpit
- (4) Sea vision SV10 underwater lights

Engine Room & Mechanical Equipment

- Twin MTU 16V2000 M94 2600HP with 660 hours
- Twin Onan 32 kw generators with exhaust gas water separators, 690/2525 hrs.
- Racor fuel filters with electric priming pumps
- RCI fuel purifiers in line with Racor fuel filters
- Oil change system for engines, transmissions and generators with cockpit connections
- Fuel transfer pumps
- Dual raw water circulation pumps for equipment requiring raw water
- (2) 4-Ton chilled water system for air conditioners
- Charles PM100 AMP combiner with boost function for shore power
- Delta T engine vents with fans and fire suppression louvers
- Automatic fire suppression system
- Cruisair compressor for all cockpit refrigeration/freezer units
- Sea recovery Aquamatic Water maker 1400GPD
- Side power hydraulic system controls Bow thruster, windlass
- Dual battery banks, ship service and engine
- Individual battery chargers for each bank
- DC crossover and parallel system for integrating battery banks and chargers

Cockpit

- Mezzanine cockpit with seating
- Teak deck and mezzanine
- (2) Bait freezers
- Large refrigerated step cooler
- Tackle drawers
- Hot and cold shower
- Transom door with gate
- Under gunnel storage boxes
- Raw water and fresh water wash downs
- Dual 100 amp Glendening cable master shore cords
- Cockpit table with stainless steel pedestal
- Cockpit shade with removable back drop
- Transom fish box
- Large deck fish box
- Eskimo 600lbs of ice a day machine
- Port side mezzanine floor box with eskimo ice dump

Deck & Exterior

- Bow pulpit with hydraulic windlass with 300' of chain
- Large anchor locker
- Bow rail
- Full tower by Palm Beach Towers with center ladder
- Rupp 43' Big Rigs outriggers
- Center rigger
- Painted salon window mask
- Under water exhaust system

Remarks

This pristine, low hour, very well maintained Viking 76' has enjoyed light family use and is in turn key condition.

Exclusions

Owner's personal effects & Original artwork

Исключения

При продаже яхты исключаются личные вещи владельца.

Отказ от ответственности

Компания предоставляет описание судна или яхты добросовестно, но не может гарантировать точность этой информации, а также не ручается за техническое состояние. Покупатель должен проинструктировать своих агентов или оценщиков исследовать представленную информацию более подробно, по собственному желанию. Продажа судна или яхты, изменение цены или снятие с продажи будет происходить без предварительного уведомления.

ФОТОГРАФИИ

Salon



Staircase to Flybridge



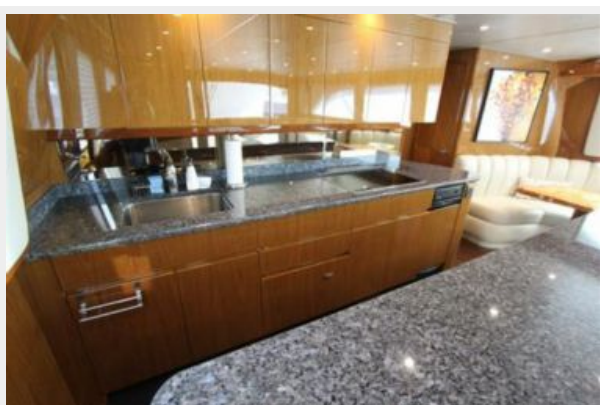
Galley



Galley



Galley



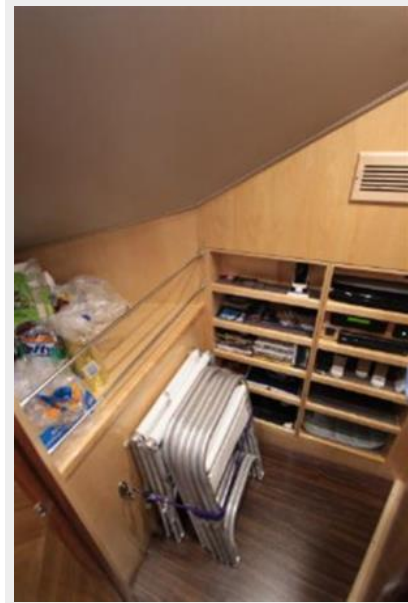
Dinette



Pantry Storage



Pantry Storage



Day Head



Master Stateroom



Master Stateroom



Master Stateroom



Master Head

Master Stateroom



Port Forward Guest Stateroom



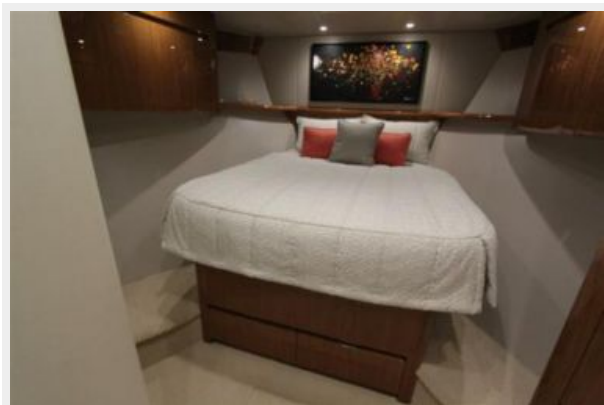
Port Forward Head



Forward Guest Head



VIP Forward Stateroom



Port VIP Stateroom



Starboard Guest Stateroom



Starboard Guest Stateroom



Starboard Guest Head



Enclosed Flybridge



Enclosed Flybridge



Helm Electronics



Helm Electronics



Helm Electronics



Helm Electronics



Aft Station Controls



Aft Station Controls



Cockpit



Cockpit



Engine Room



Engine Room



Engine Room



Engine Room



Engine Room



Engine Room



Engine Room



Engine Room



Stress Release



КОНТАКТЫ

Андрей Шестаков (Andrey Shestakov) – ведущий яхтенный брокер отдела продаж яхт и судов компании Shestakov Yacht Sales Inc. Официальный представитель Shestakov Yacht Sales Inc. для русскоговорящих клиентов в центральном офисе компании в Майами/Форт Лодердейл/Флорида/США.

Контактная информация

Email: andrey@shestakovyachtsales.com

Web: shestakovyachtsales.com

Телефоны

Краснодарский край: **+7(918)465-66-44**

США, Майами, Флорида: **+1(954)274-4435**

Время работы

Понедельник – Суббота: **9:00 - 21:00**
EDT

Воскресенье: **Закрито**

Адрес



Harbour Towne Marina, 850 NE 3rd St,
STE 213, Dania, FL 33004