

INTRIGO — AZIMUT



Судостроитель: [AZIMUT](#)

Год постройки: 2010

Модель: Моторная яхта

Цена: **ЦЕНА ЯХТЫ ПО ЗАПРОСУ**

Местонахождение: United States

Длина общая: 62' 0" (18.90m)

Ширина: 16' 7" (5.05m)

Мин. осадка: 4' 8" (1.42m)

Макс. осадка: 5' 1" (1.55m)

Крейс. скорость: 30 Kts. (35 MPH)

Макс. скорость: 33 Kts. (38 MPH)

Купить **INTRIGO — AZIMUT** а также выбрать подходящую вам яхту из нашего каталога яхт вам поможет опытный яхтенный брокер Андрей Шестаков. На сегодняшний день компания **Shestakov Yacht Sales Inc.** имеет большое количество яхт в собственном списке продаж, а также тесно сотрудничает со всеми крупными яхтенными производителями по всему миру.

Для того чтобы купить яхту **INTRIGO — AZIMUT** а также проконсультироваться по любому вопросу связанному с покупкой, продажей, чартером яхт позвоните по телефону **+7(918)465-66-44**.

ОГЛАВЛЕНИЕ

ОГЛАВЛЕНИЕ	2
ХАРАКТЕРИСТИКИ	5
Обзор	5
Основная информация	5
Размеры	5
Скорость, вместимость и масса	5
Размещение	5
Корпус и палуба	6
Информация о двигателе	6
ПОДРОБНОЕ ОПИСАНИЕ	7
62' Azimut Motor Yacht INTRIGO	7
WALK THROUGH	7
INTERIOR FEATURES	8
MAIN SALON	8
GALLEY	8
HELM/ELECTRONICS	8
ACCOMMODATIONS	9
MASTER STATEROOM	9
MASTER HEAD	9
VIP STATEROOM	9
VIP HEAD	10
GUEST STATEROOM	10
CREW QUARTERS	10
FLYBRIDGE	10
BOW	10
AFT DECK	10
LOWER HELM	11
DECK	11

ELECTRICAL SYSTEM	11
ENGINE ROOM/MECHANICAL	11
BROKERS COMMENTS	11
Исключения	11
Отказ от ответственности	11
ФОТОГРАФИИ	13
Forward	13
Foredeck	13
Starboard	13
Forward Sunpad	13
Starboard	14
Flybridge Controls	14
Flybridge Seating	14
Flybridge	14
Flybridge Grill	14
Aft	14
Controls	15
Helm	15
Dinette	15
Dinette looking Aft	15
Salon	15
Salon	15
Salon	16
Galley	16
Galley	16
Master Stateroom	16
Closet	16
Master Vanity	16
Master Bathroom	17

VIP Stateroom	17
VIP Bathroom	17
Guest Stateroom	17
Guest Bathroom	18
Crew Quarters	18
Engine Room	18
Engine Room	18
Engine Room	18
Engine Room	18
Engine Room	19
Engine Room	19
Engine Room	19
Engine Room	19
Engine Room	19
Engine Room	19
GA Plans	20
КОНТАКТЫ	21
Контактная информация	21
Телефоны	21
Время работы	21
Адрес	21

ХАРАКТЕРИСТИКИ

Обзор

Основная информация

Тип судна: Моторная яхта

Модельный год: 2011

Год постройки: 2010

Страна: United States

Верх: Open

Размеры

Длина общая: 62' 0" (18.90m)

Ширина: 16' 7" (5.05m)

Мин. осадка: 4' 8" (1.42m)

Макс. осадка: 5' 1" (1.55m)

Скорость, вместимость и масса

Крейс. скорость: 30 Kts. (35 MPH)

Дальность на крейсерской скорости:
350

Макс. скорость: 33 Kts. (38 MPH)

Чистый вес: 56 Pounds

Вместимость воды: 265 Gallons

Вместимость сточного бака: 92 Gallons

Объем топливного бака: 988 Gallons

Размещение

Всего кают: 3

Спальные места: 6

Всего ком. состава: 4

Каюты экипажа: 1

Койки экипажа: 2

Корпус и палуба

Материал корпуса: Fiberglass

Материал палубы: Teak

Комплектация корпуса: Deep Vee

Дизайнер корпуса: Azimut

Дизайнер экстерьера: Righini

Дизайнер интерьера: Azimut

Информация о двигателе

Двигатели: 2

Производитель: Caterpillar

Модель: C-18

Тип двигателя: Inboard

Тип топлива: Diesel

ПОДРОБНОЕ ОПИСАНИЕ

62' Azimut Motor Yacht INTRIGO

The 62' Azimut Motor Yacht INTRIGO was ordered by her original owner directly from the factory. When you first see INTRIGO you would think she was a new boat. The exterior finish is completely unblemished, unlike most Azimuts from the era. In terms of design and style, Azimut Evolution is one of the most desirable boats on the market. Her current owner has spared no expense with an "open checkbook" policy. This Azimut 62' E is fully loaded to American specs. This three stateroom layout with crew quarters makes for a great stylish cruiser, and plentiful exterior space with additional seating on the flybridge makes it perfect for entertaining. This is the Only 62E with Seakeeper Gyro and engine warranty.

WALK THROUGH

As you approach INTRIGO the first thing that you ask yourself, is this a 2011? She shows like new, the owner has meticulously kept the exterior and interior alike. The 62' Evolution has a distinct omnipotent feel with the elegant distinguishing large windows the entrances onto the boat are either through custom side doors to the aft deck or by a stair case from the swim platform. There is a large crew door entrance hinged from the bottom for safety the crew quarters are remarkably spacious for a 62'. Incorporating single bed, hanging locker, TV and stall shower quite comfortable for a crew of one. The aft deck is expansive with glass teak table with seating for eight. The walk-around side decks to the bow have high stainless railings for safety. A large sun pad is positioned on the bow. Entering into the cabin through a large set of curved glass doors that enhances the whole aft deck. It should be noted that the current owner is very entertainment focused as far as audio visual goes, custom acrylic pull-out bar, cigar sand tread traction, felt-lined champagne glass system. Throughout the boat state of the art entertainment equipment including exterior. The ceilings are high, the flooring is custom teak and holly floor, seats are covered in soft Italian leather to the port, opposite is the high low TV and entertaining system. All of the joinery is finished in satin giving a very modern feel. The dinette is to starboard with two custom tables for more comfortable eating Stepping down is the full size, functional galley with the ability to prepare a meal for 12 people easily. The refrigerator is full size up right with customized storage for all the flatware and dishes. Coming out of the galley to the starboard is the helm position centered in the middle of the Pilot House to the port and starboard there is a chart reading area to the port and easy to view array of instrumentation which are exceptionally well laid down with comfortable captain's driving chair covered in supple leather and custom steering wheel. When driving INTRIGO, the performance is like driving a responsive sports car. Moving down below deck all the way aft there is a full beam master with very large windows, comfortable with hydraulic bed lift, walk-in closet with hidden safe. The large bathroom features top of the line TECMA head system. For the size of the cabin you would feel that you are in a much larger yacht. More surprising, moving forward to the VIP is the volume of the cabin which is exceptionally large. This is the only vessel to have a walk-in closet and hanging locker. Moving out of that cabin to the starboard guest cabin with twin side by side beds. The access to the

bathroom which is across the companionway on the port side. Access to the flybridge is through the starboard side by an easy to climb molded staircase, the flybridge is very well laid down with a low profile crane and dinghy mounted to the aft, a huge sun pad area with retractable back rest for reading. This area can accommodate all of your friends and family. Forward is the upper helm positioned but to the port side with a duplicate set of instrumentation as below. Behind the helm is a bbq, wet bar, sink and ice maker. This deck is also covered for aesthetics and safety. The engine room is easily accessed from a hatch on the aft deck, you can move around quite freely, you have access to the generator and the mi1000 sea keeper Gyro stabilizer which is a very nice piece of equipment not seen on many yachts of this size. The Caterpillar C18 engines presents like they've only been used for a very short time. All machinery has been fully service and updated as necessary. The generator counter balances the sea keeper and is so quiet you do not hear it from anywhere else of the boat.

INTERIOR FEATURES

• Portorose Counters in head • Central vacuum system • Cockpit table with chairs • Décor exclusive • De luxe curtains for entrance • Mosquito net for portholes • Washer/dryer stackable units • Wooden floor in galley, dinette and helm • Wooden floor in salon • Linens for each cabin • Décor upgrade • Day Head

MAIN SALON

The interior of INTRIGO is warm & inviting, while still exhibiting the Italian stylishness for which Azimuts are well known. Her full beam master stateroom, not to mention her two additional over sized guest cabins, will leave you convinced that, this listing aside, the yacht must be at least 70'. Combine this with her more than ample exterior spaces. Her flybridge alone comfortably seats eight guests and it is easy to see why Azimut 62's are rarely on the market for long. Given all of this, it goes without saying that one need not be a theoretical physicist to see that INTRIGO is a seriously compelling deal. She is easy to view and very ready to be seen in Fort Lauderdale.

GALLEY

• 220 V 4burner linear ceramic hob with fiddle rail • Microwave oven and grill • Black Granite counter top with two sinks • Single lever hot and cold mixer tap in steel, satin finish • Upright 230 litre 24V fridge with 16 litre freezer • Galley outlets • Wood floor • Full size fridge • Customized glassware and dishes storage

HELM/ELECTRONICS

• Raymarine ST60 (additional) • Raymarine E80 display on flybridge • Dual G Series display at main helm • Raymarine radar 72nm open array radar antenna • Custom helm seat from 68 fly

with armrests (lower helm) • VHF 9 additional • Electric search light • Ho-lo system for 30" LCD TV • TV predisposition in crew cabin • DSS System with receivers • BOSE Home Theatre system • Wood floor • DSS Sat TV system with Dummy Dome • Electrically adjustable helm seat • Wheelhouse bench, companion • Helm wheel, stainless steel and leather with height adjustable • Power steering • Handrail • Cruise commander engine control • Cruise commander engine control levels (synchronization function incorporated), navigation instruments, engine control panel complete with acoustics and optical alarms, engine ignition keys with a start and stop buttons, generator control, battery parallel connection, compass, trim tab controls with indicators, windshield washer-wiper controls, switches for port electrically operated opening side widow.

ACCOMMODATIONS

With huge salon windows, skillfully integrated into the hull's design, allow light to illuminate all the three staterooms below deck. The spacious, well-appointed interior layout is far superior to any yacht in its class. The galley is masterfully integrated into the dining area, giving INTRIGO yet another area for entertaining. Continuing forward, you will pass by the lower helm station before walking down the private stair case to the guest quarters. Midship you will find independent access to the master stateroom, allowing for maximum space and a private suite. On the port side there is a day head for everyone's convenience adjacent to the day head is a twin guest room with side by side berths. The spacious forward VIP has an en-suite bath and a walk-in closet, providing for more than ample storage.

MASTER STATEROOM

• Double bed with hydraulic lift with storage • Custom mattress, pillows and bedspread • Wardrobe to the fore of the cabin, beneath the stairs • L-shaped wardrobe on aft side, with hanging rail, shelves, drawers and mirror • SIRIUS Radio – Bose surround sound with Logitech remote for iPod with docking station • Shading curtains, six square windows and one opening porthole per side • Emergency escape hatch • Samsung LCD 25" TV

MASTER HEAD

• Afyon Marble counter tops • Tecma freshwater flush head • Access from master cabin • Underwater light switch with dimmer • Separate shower with glass door, wooden grating • Shower column equipped with double outlet, soap shelf and wooden seat • Shelf below basin • Wooden floor • Round porthole

VIP STATEROOM

• Center line queen with storage underneath • Shelf above porthole • Wardrobe with drawers • Walk-in closet with mirror • (2) Large windows that open in the center • TV Toshiba 17" LCD •

Ironing board cupboard • LED reading lights

VIP HEAD

• Wraparound shower • Tecma freshwater flush head • Wash basin • Wenge flooring • Exhaust fan • Round window • Wood floor

GUEST STATEROOM

• Twin side by side beds • Hanging locker • Large drawers • Toshiba TV 17" LCD • Round porthole • Bathroom is accessed in companionway • Reading lights

CREW QUARTERS

• Air conditioned crew quarters with private access from swim platform • Single berth • Tecma freshwater flush head • Sink with hand shower • En-suite bathroom • Tecma freshwater flush head

FLYBRIDGE

Every last detail was designed for the owner's comfort from the wide open sunbathing area to the dining area and not to mention the spacious helm console. Aft of the spacious entertaining area is ample room for a tender or waver runner. Another prime example why this vessel is in a league of its own. • Wet bar with grill • Voyager CCTV • Raymarine VHF Ray 240 • Raymarine Auto-pilot ST6002 • ZF controls • Quick chain counter CHC1202 • Sea energy maneuvering joystick • Jabsco search light • Clarion audio sound system with subwoofer • Frigbar-freezer or refrigerator • Opacmare davit • Side power bow and stern thruster • FLIR M626L • Nautica hard bottom inflatable with 30HP Mercury 4 stroke

BOW

• 1700W, 24V winch, 10mm barbotine and capstan drum • Chain winch controls • 40kg delta anchor, 75m 10mm high resistance chain • Anchor chain housing with drain bow locker • Chain wash-down • Stainless steel anchor nose

AFT DECK

• Salon access 2-wing doors in tempered glass • Cabinet, storage drawer and garbage bin • Cockpit speakers • Access to crew quarters • Opacmare passerelle • Large dining area • JLaudio sound system • Generator control unit • Sea-fire shut down system • Refrigerator • Quick capstan

winch • Swim platform shower • Fresh water supply

LOWER HELM

• Raymarine E120 • Raymarine E80 • Jabsco search light • Sea Energy maneuvering joy stick • Raymarine Auto-pilot ST6002 • Raymarine Tridata ST6002 • Quick chain counter CHC1202M • Twin tables just aft of the lower helm station convert into one 6-top with a piece of wood joinery stored beside the ice-maker

DECK

• Teak side decks • Crew cabin • Deluxe hydraulic gangway with remote control stern thruster • CAT messenger system for main engines • Dual sea keeper stabilizing GYROs (2) • Bimini top • Bow sun pad and rear seat canvas covers

ELECTRICAL SYSTEM

• Kohler 20KW generator with 1273 hour • 110/220v, 60 cycle ship service • 12/24v, ship service • 10amp 12v Dolphin charger • 80amp 24v Dolphin charger • (4) 8D 12V Starting batteries • (2) 12v generator batteries • (4) House batteries • 12/24v lighting • Glendenning cablemaster, 220v • TV/ Phone receptacles • 110v freshwater pump • 24v freshwater pump • 24v macerator pump

ENGINE ROOM/MECHANICAL

• Bow and stern thruster • 2x caterpillar C18's • Kohler 20kw generator • Cruisair A/C • Sea water pump • Reverse fuel polishing system • Razor fuel system • Team head system • GE washer/dryer • Sea-fire FM-200 automatic extinguishing system • Flybridge enclosure • Underwater lights • Dual Racor filters

BROKERS COMMENTS

When you can own an immaculate 62E for a fraction of replacement with the iconic styling and over \$300,000 in after market installed options why look any further?

Исключения

При продаже яхты исключаются личные вещи владельца.

Отказ от ответственности

Компания предоставляет описание судна или яхты добросовестно, но не может гарантировать точность этой информации, а также не ручается за техническое состояние. Покупатель должен проинструктировать своих агентов или оценщиков исследовать представленную информацию более подробно, по собственному желанию. Продажа судна или яхты, изменение цены или снятие с продажи будет происходить без предварительного уведомления.

ФОТОГРАФИИ

Forward



Foredeck



Starboard



Forward Sunpad



Starboard



Flybridge Controls



Flybridge Seating



Flybridge



Flybridge Grill



Aft



Controls



Helm



Dinette



Dinette looking Aft



Salon



Salon



Salon



Galley



Galley



Master Stateroom



Master Vanity



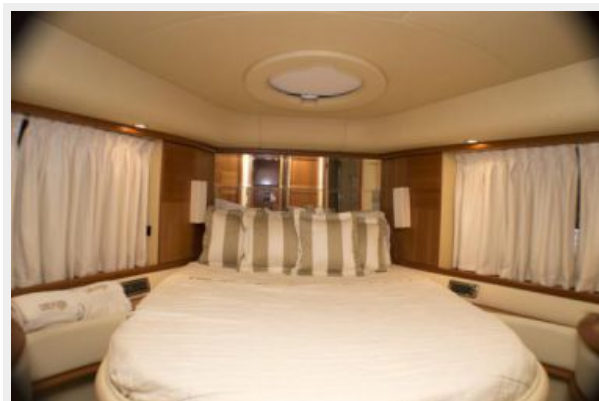
Closet



Master Bathroom



VIP Stateroom



VIP Bathroom



Guest Stateroom



Guest Bathroom



Crew Quarters



Engine Room



Engine Room



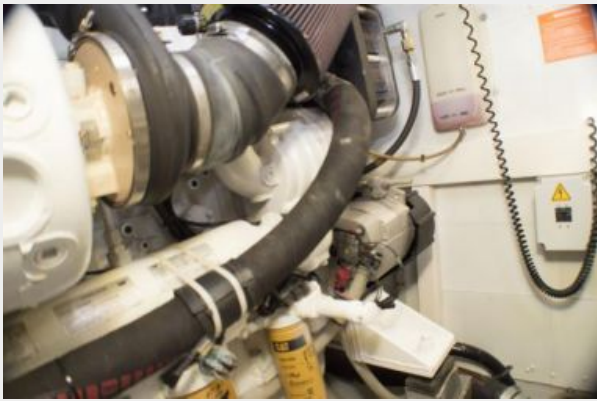
Engine Room



Engine Room



Engine Room



Engine Room



Engine Room



Engine Room



Engine Room



Engine Room



GA Plans



КОНТАКТЫ

Андрей Шестаков (Andrey Shestakov) – ведущий яхтенный брокер отдела продаж яхт и судов компании Shestakov Yacht Sales Inc. Официальный представитель Shestakov Yacht Sales Inc. для русскоговорящих клиентов в центральном офисе компании в Майами/Форт Лодердейл/Флорида/США.

Контактная информация

Email: andrey@shestakovyachtsales.com

Web: shestakovyachtsales.com

Телефоны

Краснодарский край: **+7(918)465-66-44**

США, Майами, Флорида: **+1(954)274-4435**

Время работы

Понедельник – Суббота: **9:00 - 21:00**
EDT

Воскресенье: **Закрето**

Адрес



Harbour Towne Marina, 850 NE 3rd St,
STE 213, Dania, FL 33004