

REELIN & DEALIN — SEA VEE CORP



Builder: SEA VEE CORP

Year Built: 2011

Model: Sport Fisherman

Price: PRICE ON APPLICATION

Location: United States

LOA: 39' 0" (11.89m)

Beam: 11' 0" (3.35m)

Cruise Speed: 37 Kts. (43 MPH)

Max Speed: 47 Kts. (54 MPH)

Our experienced yacht broker, Andrey Shestakov, will help you choose and buy a yacht that best suits your needs **REELIN & DEALIN — SEA VEE CORP** from our catalogue. Presently, at Shestakov Yacht Sales Inc., we have a wide variety of yachts available on our sale's list. We also work in close contact with all the big yacht manufacturers from all over the world.

If you would like to buy a yacht **REELIN & DEALIN — SEA VEE CORP** or would like help answering any questions concerning purchasing, selling or chartering a yacht, please call **+1(954)274-4435**

TABLE OF CONTENTS

TABLE OF CONTENTS	2
SPECIFICATIONS	4
Basic Information	4
Dimensions	4
Speed, Capacities and Weight	4
Accommodations	4
Hull and Deck Information	4
Engine Information	5
DETAILED INFORMATION	6
OVERVIEW	6
ELECTRONICS & NAVIGATION	6
HULL AND DECK EQUIPMENT	7
DISCLAIMER	8
Exclusions	8
Disclaimer	8
PHOTOS	9
Aft cockpit with lounges onboard	9
Forward lounge seating	9
Removable aft bench lounges	9
Forward	9
Forward seating	9
Hardtop and forward spreader light	9
Head	10
Helm Seat	10
Helm seat and footrest	10
Tackle center aft	10
Electronics	10
Bow Thruster	10

Raymarine E140 wide	11
Wiring beneath console	11
Forward sink console	11
JL Audio speakers throughout	11
Newer Fusion sound system forward remote	11
Anchor and fender storage	11
Aft underdeck bilge access	12
Transom livewell	12
Rod storage underdeck side hatch	12
Forward underdeck, can be plumbed as a livewell	12
Stored inside	12
Triple 300HP Yamahas - under 1000 hrs	12
Cowling covers	13
Canvas seat covers	13
Canvas seat covers	13
Navy blue gelcoat hull	13
Engine Display	13
Inbound	13
CONTACTS	15
Contact details	15
Telephones	15
Office hours	15
Address	15

SPECIFICATIONS

Basic Information

Category: Sport Fisherman	Sub Category: Center Console
Model Year: 2011	Year Built: 2011
Country: United States	

Dimensions

LOA: 39' 0" (11.89m)	Beam: 11' 0" (3.35m)
----------------------	----------------------

Speed, Capacities and Weight

Cruise Speed: 37 Kts. (43 MPH)	Max Speed: 47 Kts. (54 MPH)
Water Capacity: 60 Gallons	Holding Tank: 18 Gallons
Fuel Capacity: 590 Gallons	

Accommodations

Total Heads: 1

Hull and Deck Information

Hull Material: Fiberglass	Deck Material: Fiberglass
Hull Configuration: Deep Vee	Hull Color: Navy Blue

Engine Information

Engines: 3	Manufacturer: Yamaha
Model: F300	Engine Type: Outboard
Fuel Type: Gas/Petrol	

DETAILED INFORMATION

OVERVIEW

A beautiful Navy blue hull 39' Sea Vee LE-edition powered by desirable triple 300hp Yamahas with extended YES warrantee coverage until May 2017. This arrangement is ideal for combination fishing & cruising use with an extended hardtop and comfortable lounge seating forward of the center console. The forward side of the console has a pneumatic slide opening door with steps down to a roomy head area with sink and storage. Aft of the console there is a helm bench seat with footrest, grab-rails and rod holder & drink holders on the top edge. Behind in the cockpit a nice tackle center and beneath a Frigid Rigid cooler which has an automatic slide out at the push of a button. There is a center transom live well with clear top and plenty of rod holders in the gunwales plus storage rod holders along the aft hardtop and on the console sides. Taco GrandSlam radial outriggers mounted in the hardtop with LED spreader lights (2 aft, 1 forward). There are two removable aft lounges in either corner if a cruising day is on the menu. There is a side opening dive door with a fold out swim ladder and the entire boat has large coaming pads. There is a 3-side polycarbonate helm enclosure plus side wings were added in 2014. Many more updates were made in 2014 including new Vhf radios and antennas, a new Fusion stereo system with remote panel by the forward seating & renewed JL Audio speakers. Also a new offshore canister liferaft & EPIRB, plus a solar panel with additional trickle charger & all new AMG batteries. The boat has sharp blue LED cockpit lights and 4 LED underwater lights. The bow thruster helps to make dockside operations easy plus a full Raymarine electronics package. There is also a removable upper crows nest seat.

ELECTRONICS & NAVIGATION

Two Raymarine E140 wide multifunction navigation screens GPS chartplotter/Recording Depth/Radar/Video (2 separate GPS antennas)

Radar with 4Kw open-array scanner, Raymarine VCM 100

Depth sounder module with 1Kw glassed in transducer

Raymarine autopilot, X30 Smartpilot

Two Standard Horizon Matrix Vhf radios ('14) with AIS/GPS and external speaker in hardtop, also PA horn on hardtop

Fusion MS IP700 stereo system ('14) with remote panel by forward seating, extensive speaker system with 7 JL Audio speakers and tweeters, plus 2 JL sub-woofers, and 2 JL Audio amplifiers. SAT radio/IPOD/CD/AM-FM

2 USB charging plugs at helm console & 1 12V lighter plug

White Richie Powerdamp magnetic compass

ACR EPIRB ('14)

Nav screens, Vhfs, and stereo are behind a clear Lexan opening door with gas-shock assist lift keepers

HULL AND DECK EQUIPMENT

Fortress anchor with chain lead and nylon rode

Pipe Design fiberglass hardtop with forward supports to the gunwales, molded aft spreader lights, grab-rail truss, 3-sided Polycarbonate enclosure (vent screening panel on top) and removable track-to-track wing panels ('14), LED running lights, removable observation tower with seat & cover.

Revere Elite emergency life-raft with hydrostatic release in rack mounted on hardtop ('14)

Fresh & Saltwater washdown midships with coil hose racks

Odyssey Marine Batteries ('14) in secured boxes with shutoff switches

Vetus Bow Thruster

Large K-plane style trim tabs recessed beneath molded engine mounting wells

Hydraulic steering

4 LED underwater lights ('14)

Polished stainless 3-spoke helm wheel with cheater knob

Pneumatic air door slides open at forward side of console to access freshwater marine head with holding tank & macerator. Head compartment also has freshwater sink with movable wand/shower and drained non-skid floor.

Inside console is main electrical panel with digital displays for amp use and battery condition & circuit breakers

Bonding system with transom grounding plate

Xantrex Truecharge2 40amp battery charger with shore power inlet plug

Solar panel on hardtop with battery trickle charger

Aft cockpit portside has an inward opening side dive door with fold out stainless steel swim ladder with rubber step treads

Just inside the dive door is a freshwater shower wand

Radial outriggers

6 rod holders on aft edge of hardtop

storage rod holders with piped draining on sides of console ('14)

Under aft deck hatch there is a removable starboard storage deck for buckets, nets, etc.

Pop-up cleats

DISCLAIMER

The Company offers the details of this vessel in good faith but cannot guarantee or warrant the accuracy of this information nor warrant the condition of the vessel. A buyer should instruct his agents, or his surveyors, to investigate such details as the buyer desires validated. This vessel is offered subject to prior sale, price change, or withdrawal without notice.

Exclusions

Owner's personal belongings.

Disclaimer

The Company offers the details of this vessel or yacht in good faith but cannot guarantee or warrant the accuracy of this information nor warrant the condition of the vessel. A buyer should instruct his representatives, agents, or his surveyors, to investigate such details as the buyer desires validated. This vessel or yacht is offered subject to prior sale, price change, or withdrawal without notice.

PHOTOS

Aft cockpit with lounges onboard



Forward lounge seating



Removable aft bench lounges



Forward



Forward seating



Hardtop and forward spreader light



Head



Helm Seat



Helm seat and footrest



Tackle center aft



Electronics



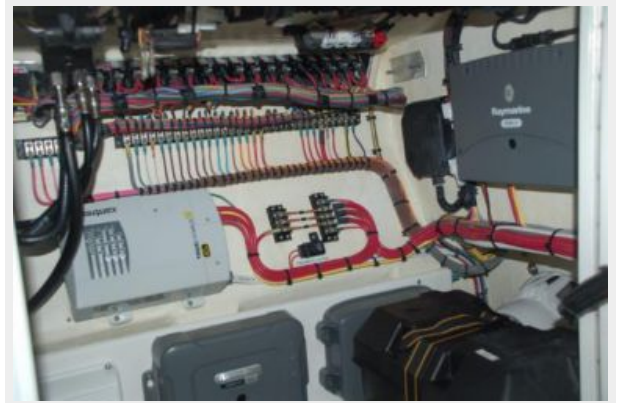
Bow Thruster



Raymarine E140 wide



Wiring beneath console



Forward sink console



JL Audio speakers throughout



Newer Fusion sound system forward remote



Anchor and fender storage



Aft underdeck bilge access



Transom livewell



Rod storage underdeck side hatch



Forward underdeck, can be plumbed as a livewell



Stored inside



Triple 300HP Yamahas - under 1000 hrs



Cowling covers**Canvas seat covers****Canvas seat covers****Navy blue gelcoat hull****Engine Display****Inbound**



CONTACTS

Andrey Shestakov, leading yacht broker of the sales department of Shestakov Yacht Sales Inc. Shestakov Yacht Sales Inc., the official representative of the Miami/Fort Lauderdale FL headquarters.

Contact details

Email: **andrey@shestakovyachtsales.com**

Web: shestakovyachtsales.com/en/

Telephones

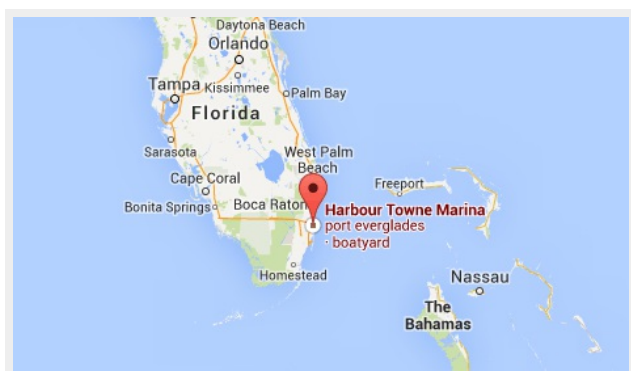
USA: **+1(954)274-4435**

Office hours

Monday – Saturday: **9:00 - 21:00 EDT**

Sunday: **closed**

Address



Harbour Towne Marina, 850 NE 3rd St,
STE 213, Dania, FL 33004