

## REELIN & DEALIN — SEA VEE CORP



**Судостроитель:** [SEA VEE CORP](#)

**Год постройки:** 2011

**Модель:** Катер для спортивной рыбалки

**Цена:** **ЦЕНА ЯХТЫ ПО ЗАПРОСУ**

**Местонахождение:** United States

**Длина общая:** 39' 0" (11.89m)

**Ширина:** 11' 0" (3.35m)

**Крейс. скорость:** 37 Kts. (43 MPH)

**Макс. скорость:** 47 Kts. (54 MPH)

Купить **REELIN & DEALIN — SEA VEE CORP** а также выбрать подходящую вам яхту из нашего каталога яхт вам поможет опытный яхтенный брокер Андрей Шестаков. На сегодняшний день компания **Shestakov Yacht Sales Inc.** имеет большое количество яхт в собственном списке продаж, а также тесно сотрудничает со всеми крупными яхтенными производителями по всему миру.

Для того чтобы купить яхту **REELIN & DEALIN — SEA VEE CORP** а также проконсультироваться по любому вопросу связанному с покупкой, продажей, чартером яхт позвоните по телефону **+7(918)465-66-44**.

# ОГЛАВЛЕНИЕ

---

|                                    |    |
|------------------------------------|----|
| ОГЛАВЛЕНИЕ                         | 2  |
| ХАРАКТЕРИСТИКИ                     | 4  |
| Основная информация                | 4  |
| Размеры                            | 4  |
| Скорость, вместимость и масса      | 4  |
| Размещение                         | 4  |
| Корпус и палуба                    | 4  |
| Информация о двигателе             | 5  |
| ПОДРОБНОЕ ОПИСАНИЕ                 | 6  |
| OVERVIEW                           | 6  |
| ELECTRONICS & NAVIGATION           | 6  |
| HULL AND DECK EQUIPMENT            | 7  |
| DISCLAIMER                         | 8  |
| Исключения                         | 8  |
| Отказ от ответственности           | 8  |
| ФОТОГРАФИИ                         | 9  |
| Aft cockpit with lounges onboard   | 9  |
| Forward lounge seating             | 9  |
| Removable aft bench lounges        | 9  |
| Forward                            | 9  |
| Forward seating                    | 9  |
| Hardtop and forward spreader light | 9  |
| Head                               | 10 |
| Helm Seat                          | 10 |
| Helm seat and footrest             | 10 |
| Tackle center aft                  | 10 |
| Electronics                        | 10 |
| Bow Thruster                       | 10 |

|   |           |
|---|-----------|
| Raymarine E140 wide                             | 11        |
| Wiring beneath console                          | 11        |
| Forward sink console                            | 11        |
| JL Audio speakers throughout                    | 11        |
| Newer Fusion sound system forward remote        | 11        |
| Anchor and fender storage                       | 11        |
| Aft underdeck bilge access                      | 12        |
| Transom livewell                                | 12        |
| Rod storage underdeck side hatch                | 12        |
| Forward underdeck, can be plumbed as a livewell | 12        |
| Stored inside                                   | 12        |
| Triple 300HP Yamahas - under 1000 hrs           | 12        |
| Cowling covers                                  | 13        |
| Canvas seat covers                              | 13        |
| Canvas seat covers                              | 13        |
| Navy blue gelcoat hull                          | 13        |
| Engine Display                                  | 13        |
| Inbound   | 13        |
| <b>КОНТАКТЫ</b>                                 | <b>15</b> |
| Контактная информация                           | 15        |
| Телефоны  | 15        |
| Время работы                                    | 15        |
| Адрес   | 15        |

# ХАРАКТЕРИСТИКИ

## Основная информация

**Тип судна:** Катер для спортивной рыбалки

**Подкатегория:** Яхты с центральной консолью

**Модельный год:** 2011

**Год постройки:** 2011

**Страна:** United States

## Размеры

**Длина общая:** 39' 0" (11.89m)

**Ширина:** 11' 0" (3.35m)

## Скорость, вместимость и масса

**Крейс. скорость:** 37 Kts. (43 MPH)

**Макс. скорость:** 47 Kts. (54 MPH)

**Вместимость воды:** 60 Gallons

**Вместимость сточного бака:** 18 Gallons

**Объем топливного бака:** 590 Gallons

## Размещение

**Всего ком. состава:** 1

## Корпус и палуба

**Материал корпуса:** Fiberglass

**Материал палубы:** Fiberglass

**Комплектация корпуса:** Deep Vee

**Цвет корпуса:** Navy Blue

## Информация о двигателе

---

**Двигатели:** 3

**Производитель:** Yamaha

**Модель:** F300

**Тип двигателя:** Outboard

**Тип топлива:** Gas/Petrol

# ПОДРОБНОЕ ОПИСАНИЕ

## OVERVIEW

A beautiful Navy blue hull 39' Sea Vee LE-edition powered by desirable triple 300hp Yamahas with extended YES warranty coverage until May 2017. This arrangement is ideal for combination fishing & cruising use with an extended hardtop and comfortable lounge seating forward of the center console. The forward side of the console has a pneumatic slide opening door with steps down to a roomy head area with sink and storage. Aft of the console there is a helm bench seat with footrest, grab-rails and rod holder & drink holders on the top edge. Behind in the cockpit a nice tackle center and beneath a Frigid Rigid cooler which has an automatic slide out at the push of a button. There is a center transom live well with clear top and plenty of rod holders in the gunwales plus storage rod holders along the aft hardtop and on the console sides. Taco GrandSlam radial outriggers mounted in the hardtop with LED spreader lights (2 aft, 1 forward). There are two removable aft lounges in either corner if a cruising day is on the menu. There is a side opening dive door with a fold out swim ladder and the entire boat has large coaming pads. There is a 3-side polycarbonate helm enclosure plus side wings were added in 2014. Many more updates were made in 2014 including new Vhf radios and antennas, a new Fusion stereo system with remote panel by the forward seating & renewed JL Audio speakers. Also a new offshore canister liferaft & EPIRB, plus a solar panel with additional trickle charger & all new AMG batteries. The boat has sharp blue LED cockpit lights and 4 LED underwater lights. The bow thruster helps to make dockside operations easy plus a full Raymarine electronics package. There is also a removable upper crows nest seat.

## ELECTRONICS & NAVIGATION

Two Raymarine E140 wide multifunction navigation screens GPS chartplotter/Recording Depth/Radar/Video (2 separate GPS antennas)

Radar with 4Kw open-array scanner, Raymarine VCM 100

Depth sounder module with 1Kw glassed in transducer

Raymarine autopilot, X30 Smartpilot

Two Standard Horizon Matrix Vhf radios ('14) with AIS/GPS and external speaker in hardtop, also PA horn on hardtop

Fusion MS IP700 stereo system ('14) with remote panel by forward seating, extensive speaker system with 7 JL Audio speakers and tweeters, plus 2 JL sub-woofers, and 2 JL Audio amplifiers. SAT radio/IPOD/CD/AM-FM

2 USB charging plugs at helm console & 1 12V lighter plug

White Richie Powerdamp magnetic compass

ACR EPIRB ('14)

Nav screens, Vhfs, and stereo are behind a clear Lexan opening door with gas-shock assist lift keepers

---

## HULL AND DECK EQUIPMENT

---

Fortress anchor with chain lead and nylon rode

Pipe Design fiberglass hardtop with forward supports to the gunwales, molded aft spreader lights, grab-rail truss, 3-sided Polycarbonate enclosure (vent screening panel on top) and removable track-to-track wing panels ('14), LED running lights, removable observation tower with seat & cover.

Revere Elite emergency life-raft with hydrostatic release in rack mounted on hardtop ('14)

Fresh & Saltwater washdown midships with coil hose racks

Odyssey Marine Batteries ('14) in secured boxes with shutoff switches

Vetus Bow Thruster

Large K-plane style trim tabs recessed beneath molded engine mounting wells

Hydraulic steering

4 LED underwater lights ('14)

Polished stainless 3-spoke helm wheel with cheater knob

Pneumatic air door slides open at forward side of console to access freshwater marine head with holding tank & macerator. Head compartment also has freshwater sink with movable wand/shower and drained non-skid floor.

Inside console is main electrical panel with digital displays for amp use and battery condition & circuit breakers

Bonding system with transom grounding plate

Xantrex Truecharge2 40amp battery charger with shore power inlet plug

Solar panel on hardtop with battery trickle charger

Aft cockpit portside has an inward opening side dive door with fold out stainless steel swim ladder with rubber step treads

Just inside the dive door is a freshwater shower wand

Radial outriggers

6 rod holders on aft edge of hardtop

storage rod holders with piped draining on sides of console ('14)

Under aft deck hatch there is a removable starboard storage deck for buckets, nets, etc.

Pop-up cleats

---

## DISCLAIMER

---

The Company offers the details of this vessel in good faith but cannot guarantee or warrant the accuracy of this information nor warrant the condition of the vessel. A buyer should instruct his agents, or his surveyors, to investigate such details as the buyer desires validated. This vessel is offered subject to prior sale, price change, or withdrawal without notice.

---

## Исключения

---

При продаже яхты исключаются личные вещи владельца.

---

## Отказ от ответственности

---

Компания предоставляет описание судна или яхты добросовестно, но не может гарантировать точность этой информации, а также не ручается за техническое состояние. Покупатель должен проинструктировать своих агентов или оценщиков исследовать представленную информацию более подробно, по собственному желанию. Продажа судна или яхты, изменение цены или снятие с продажи будет происходить без предварительного уведомления.



# ФОТОГРАФИИ

**Aft cockpit with lounges onboard**



**Forward lounge seating**



**Removable aft bench lounges**



**Forward**



**Forward seating**



**Hardtop and forward spreader light**



**Head**



**Helm Seat**



**Helm seat and footrest**



**Tackle center aft**



**Electronics**



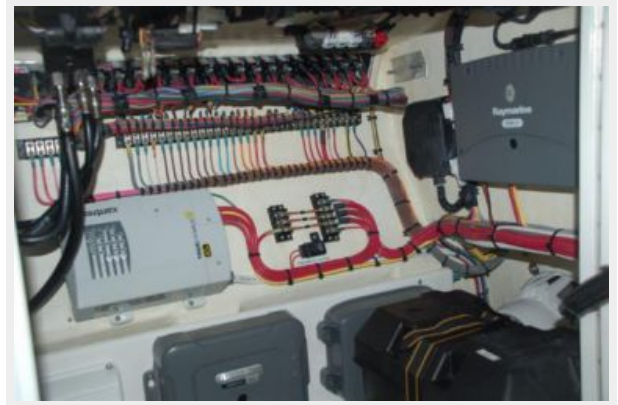
**Bow Thruster**



**Raymarine E140 wide**



**Wiring beneath console**



**Forward sink console**



**JL Audio speakers throughout**



**Newer Fusion sound system forward remote**



**Anchor and fender storage**



**Aft underdeck bilge access**



**Transom livewell**



**Rod storage underdeck side hatch**



**Forward underdeck, can be plumbed as a livewell**



**Stored inside**



**Triple 300HP Yamahas - under 1000 hrs**



**Cowling covers**



**Canvas seat covers**



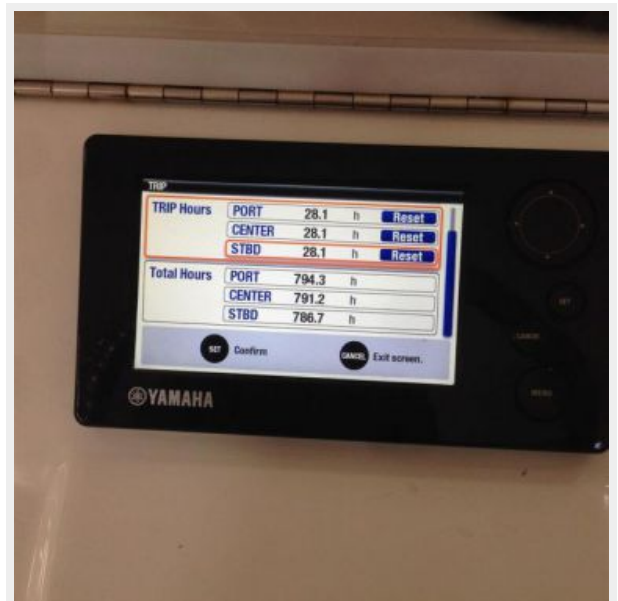
**Canvas seat covers**



**Navy blue gelcoat hull**



**Engine Display**



**Inbound**





# КОНТАКТЫ

---

Андрей Шестаков (Andrey Shestakov) – ведущий яхтенный брокер отдела продаж яхт и судов компании Shestakov Yacht Sales Inc. Официальный представитель Shestakov Yacht Sales Inc. для русскоговорящих клиентов в центральном офисе компании в Майами/Форт Лодердейл/Флорида/США.

## Контактная информация

---

Email: [andrey@shestakovyachtsales.com](mailto:andrey@shestakovyachtsales.com)

Web: [shestakovyachtsales.com](http://shestakovyachtsales.com)

## Телефоны

---

Краснодарский край: **+7(918)465-66-44**

США, Майами, Флорида: **+1(954)274-4435**

## Время работы

---

Понедельник – Суббота: **9:00 - 21:00**  
EDT

Воскресенье: **Закрето**

## Адрес

---



Harbour Towne Marina, 850 NE 3rd St,  
STE 213, Dania, FL 33004