

## ANTEO — NAUTOR'S SWAN



**Судостроитель:** [NAUTOR'S SWAN](#)

**Длина общая:** 76' 6" (23.30m)

**Год постройки:** 2005

**Модель:** Крейсерская яхта

**Цена:** ЦЕНА ЯХТЫ ПО ЗАПРОСУ

**Местонахождение:** Italy

Купить ANTEO — NAUTOR'S SWAN а также выбрать подходящую вам яхту из нашего каталога яхт вам поможет опытный яхтенный брокер Андрей Шестаков. На сегодняшний день компания Shestakov Yacht Sales Inc. имеет большое количество яхт в собственном списке продаж, а также тесно сотрудничает со всеми крупными яхтенными производителями по всему миру.

Для того чтобы купить яхту ANTEO — NAUTOR'S SWAN а также проконсультироваться по любому вопросу связанному с покупкой, продажей, чартером яхт позвоните по телефону **+7(918)465-66-44**.

# ОГЛАВЛЕНИЕ

---

ОГЛАВЛЕНИЕ	2
ХАРАКТЕРИСТИКИ	3
Обзор	3
Основная информация	3
Размеры	3
Размещение	3
Корпус и палуба	3
ПОДРОБНОЕ ОПИСАНИЕ	4
Detailed Information	4
Исключения	17
Отказ от ответственности	18
ФОТОГРАФИИ	19
КОНТАКТЫ	26
Контактная информация	26
Телефоны	26
Время работы	26
Адрес	26

# ХАРАКТЕРИСТИКИ

## Обзор

The Swan 75 Flush-Deck is a practical and seaworthy long range cruiser with a hi-volume four-cabin interior and spacious deck layout. Fully equipped with all the modern amenities that one would expect including carbon rig, park avenue boom, tender garage, swim platform and carbon telescopic gangway, and that's just on the outside!

Lightly used since her launch in 2005, this is a turn-key program for an owner wishing to step onboard and go sailing. Anteo is offered for sale under leasing.

## Основная информация

**Тип судна:** Крейсерская яхта

**Подкатегория:** Cruising/Racing Sailboat

**Модельный год:** 2005

**Год постройки:** 2005

**Страна:** Italy

## Размеры

**Длина общая:** 76' 6" (23.30m)

## Размещение

**Всего кают:** 5

## Корпус и палуба

**Материал корпуса:** Composite

---

# ПОДРОБНОЕ ОПИСАНИЕ

---

## Detailed Information

---

The Swan 75 Flush-Deck is a practical and seaworthy long range cruiser with a hi-volume four-cabin interior and spacious deck layout. Fully equipped with all the modern amenities that one would expect including carbon rig, park avenue boom, tender garage, swim platform and carbon telescopic gangway, and that's just on the outside!

Lightly used since her launch in 2005, this is a turn-key program for an owner wishing to step onboard and go sailing.

### HULL & APPENDAGES

Hull is constructed in single skin glass/aramid hybrid reinforced polyester laminate with vinylester skincoats.

Carbon fiber stringers and reinforcements

Hull is finished in white gelcoat, with dark blue cove and boot stripes

Keel is an antimony lead casting with cast in keel bolts of hi-tensile stainless steel

### Steering System

Rudder of foam filled GRP with tapered stock in e-glass composite

Dual destroyer type steering wheels with teak trim and carbon spokes mounted on carbon pedestals

Lightweight aluminum steering quadrant

Emergency steering gear stowed in lazarette

### Additional Hull Features

Hydraulically operated bathing platform with synthetic teak surface

Transom door seals pneumatically preventing water ingress

Telescopic electric gangway from Multiplex built in carbon fiber

Max Power retractable bow thruster driven by PTO on generator, joystick control at helm

## DECK

Deck is a sandwich construction, using glass/aramid hybrid fibre reinforced polyester laminate with a low-density closed cell foam core

Hi density core or solid laminate under deck fittings.

Deck laminates are finished in gelcoat White NGA 9650

Laid teak 9 x 55 mm nominal thickness on side and bridge deck, raised saloon top, cockpit soles and seats Low toe rail inside composite bulwark

### Deck Equipment

Stainless steel retractable anchor arm.

Pulpit and pushpit are 740 mm high and made of Ø 32 mm stainless steel tube.

Pushpit has gates for easy access to bathing platform.

Recessed sprayhood in front of main companionway

Carbon fiber antenna post on aft deck

Mooring cleats on bow and stern, pop-up mooring cleats midship

Removable screw in stainless steel rails on foredeck

Tender mounting bracket on foredeck

### Winches (Lewmar)

Primary 2x 88/3 SESTH 3-speed

Secondary 2x 88 SEST

Halyard 1x 77/3 EST speed, 1x 77EST, 2x 66 CEST

Anchoring Lewmar 3000 windlass recessed in anchor locker (remote control also in aft cockpit)

Mooring Retractable Sanguinetti mooring winch on foredeck

Polished stainless steel deck buttons for all

Sailing Hardware

Blocks by Harken

Spinlock Jammers

Harken main and genoa sheet tracks

Main traveler controlled hydraulically

INTERIOR

Layout Drawing

General

Teak interior is finished in hand rubbed satin varnish

Topsides where visible lined with teak battens

Floorboards with teak veneer finish

Removable overhead liner

Sky screens/blinds on all deck hatches

Overhead handrails in saloon

Cantalupi Ragno reading lights over each berth

Cantalupi LED overhead lighting

Red night lights and floor level, nav station and saloon

Fore Peak

Storage space forward of water tight bulkhead in crew head

---

Mounting bracket for small outboard engine

Forward Cabin (Crew)

Two fixed berths on starboard side

Settee on port side

Stainless steel covered work surface on port side

Teak storage boxes below berth

One full height hanging locker and one half-height storage locker

Candy automatic washing machine, 3 kg (new 2018)

En suite head with shower

Tecma silence WC, mirrors, washbasin and storage lockers

Forward Guest Cabin (Port)

Double berth below with folding Pullman berth above

Drawers below double berth

Hanging locker forward of berth

Full height mirror with halogen spotlights on bulkhead

Bed side table next to lower berth

En suite head with shower

Tecma silence WC, mirrors, washbasin and storage lockers

Galley (STBD)

Insulated and sheeted space for cooker

Double stainless steel sinks

Folding and recessed garbage bin

Front Loading refrigerator forward

Top loading freezer

Additional fridge/freezer aft

Counter tops finished in Corian Cameo White

Storage lockers, drawers and cupboards

Galley Equipment

Stainless Steel four burner Alpes Inox cooker with oven, gimbaled mounting

Dishwasher Miele for 12 place settings

Waste disposal unit in galley sink

Saloon

L-shaped settee to port with table and three Swan chairs on centerline

Settee on starboard side with electric adjustable height coffee table

Bookshelves and lockers either side outboard

Icemaker fwd starboard, Isotherm (new 2018)

Nav Station

Forward facing chart table on aft starboard side of saloon

Drawers and bookshelves for navigation materials

Electrical switchboard within reach

LED light indicators for electrical consumers

Emergency stop for engine

Electronic instruments mounted flush on vertical panels

Oilskin locker aft

Engine Room



---

Internally sound insulated and fire resistant (SOLAS B-15)

Fire shutters and storm covers on ventilation ducts

Integral drip tray below engines

Aft Guest Cabin (PORT)

Sofa outboard to port with folding Pullman above

Writing desk and Swan chair inboard

Full height hanging locker forward of writing desk

En suite head with shower

Drawers below sofa/bed

Tecma silence WC, mirrors, washbasin and storage lockers

Aft Guest Cabin (STBD)

Upper and lower fixed berths outboard

Hanging locker

Drawers below bed

Ensuite head with shower, Tecma WC, washbasin, mirrors and storage lockers

Aft Cabin

Twin berths on either side outboard

Large mirror centerline on forward bulkhead

Hanging lockers on either side outboard and forward of berths

En suite head with separate shower stall forward to port

Tecma silence WC, mirrors, washbasin and storage lockers

## ENGINE & SYSTEMS

Cummins 6BT5.9-M marine diesel engine 134Kw/180Hp

ZF 63 A hydraulic reverse/reduction gear 2.68:1

Hi tensile steel shaft with drip free shaft seal and P-bracket

Three bladed Varifold propeller

Two stage silencing exhaust system with fiberglass silencer and gas/water separators fitted to main engine and generator. Cooling water is discharged below waterline and exhaust gasses aft

Total fuel capacity 1470 L in five stainless steel tanks

Electric fuel transfer pump

Dual Separ filters for engine and generator, all with water in fuel alarm and drain valve

Fuel and water level meters at chart table

### Plumbing Systems

Hot and cold pressurized water system, 2x electric pumps

Water capacity 1280 litres in two integral tanks

Hot water produced by 220v heating element or engine and stored in 80L tank

Deck shower on swim platform and in aft cockpit with hot and cold water

Sea water pump for fire fighting and deck wash, outlet on foredeck

2x Tecnicomar watermakers producing 200 L/H each

Seagull water purifier in galley

### Hydraulic System

Bosch Rexroth hydraulic power pack operating Genoa furler and mainsail traveler

Manual rigging hydraulics by Navtec operating:

Vang

Backstay

Inner forestay

- Genoa Halyard

- Outhaul

Separate power pack for bath platform

## Refrigeration Systems

Two 230V AC driven Iceberg refrigeration units with hold-over plates for fridge and both freezers

Possible to run the units off the inverter

Thermostatic control enables one freezer to be used as a refrigerator

## Ventilation System

Forced ventilation in all cabins and for bilge and lazarette

Condaria Reverse cycle Air conditioning system with fan coils in:

- Owner's Cabin
- Aft port cabin
- Aft stbd cabin
- Saloon
- Forward Guest Cabin
- Galley
- Forepeak

Openable deck hatches and portholes

Battery boxes ventilated outside via fans

Eberspacher diesel heater linked to fan coil circuit

Engine room exhaust fans

Hella 12v turbo fans in crew cabin, aft stbd cabin and port aft cabin

## Drainage System

Two manual whale Titan bilge pumps (cockpit and saloon) to pump out main bilge. Cockpit pump can be switched to pump out lazarette

One electrical submersible bilge pump in main bilge

One electric bilge pump in lazarette

Manual pump for fore peak/bow thruster compartment and anchor chain locker

Galley sinks drain directly through sea cock

Washbasins and showers drain into sump tanks (capacity 60L), pumped out by individual electric pumps. Back-up manual pumps for all sump tanks

Tecma silence heads use fresh water and drain into stainless holding tanks with level indicator

Tanks emptied by electric pumps or via deck suction lines. Back up electric pumps fitted to each tank

## ELECTRICAL SYSTEM

24v DC system with insulated return

230V AC is grounded three wire system

Electrical distribution panel near chart table

Wiring sized to minimize voltage drop

Lightning protection through mast, rigging and keel

### DC System

Service battery bank 800Ah 5h (960 Ah 20 h)

Radio battery bank 240 Ah

Battery parallel switch for engine and service batteries

Separate batteries for engine and generator starting

### AC System

Fed by 50A shore power system, generator or inverter

Reverse polarity switch for shore power

20 KvA Westerbeke diesel generator with sound shield and PTO clutch

## Chargers/Inverters

140A alternator on main engine

2x 230V 75A service battery chargers

1x 230V 50A radio battery charger

Engine and generator batteries charged by dedicated alternators on each engine

2 x Mastervolt 24/5000 VA inverter with transfer switch

## ELECTRONIC SYSTEMS

### Navigation Instruments

B&G Hydra Cruise sailing instruments

Hydra main processor

NMEA FFD at nav station

7x Non-NMEA FFD's (4 in cockpit, chart table, aft cabin, forepeak)

6x 20/20's

Analogue 360 degree wind

Analogue magnified wind

Rudder angle display

EasyTRX 25 class B AIS unit

### **New electronic 2018**

B&G Zeus3 plotter/display at nav station

B&G Broadband 4G Radar

Furuno GP-39 dedicated GPS

## Autopilot System

B&G Hydra 2000

Rexroth twin rams

Meridian constant running pump

Display at helm and nav station

#### Computer Systems

2 x 12V computers with one 17" AOC monitor (new 2018)

HP DeskJet 3720 WiFi Printer

MaxSea software

#### Security System

Fixed colour camera under sat TV antenna

#### Communications Systems

Furuno SSB

T&T F33 satellite receiver

Iridium telephone

Furuno FM 2721 VHF with handset at helm and nav station (doubles as intercom)

3x Icom IC-M87 Handheld VHF

1x EPIRB

External WiFi and mobile antenna, hard-wired to computer and with onboard WiFi network repeater

#### Entertainment Systems

40" Samsung HD TV in saloon on starboard side saloon (new 2018)

Sony 3D HD Audio/Video amplifier

---

Bose Acoustimass 5.1 surround sound in saloon, subwoofer under table

2 SAT Decoder (including Sky Italy)

Sat TV antenna

Blue Ray Disk WiFi

## MAST & RIGGING

Offshore Spars standard modulus carbon fiber four-spreader fractional rig, discontinuous rod standing rigging and 25 degree swept back spreaders

Carbon fiber park avenue boom with internal lights

Separate storm trysail track on mast

Spinnaker track on mast

Track on boom for sun awning

Halyards led internally

Reefing lines led to aft cockpit

Lazy jacks with jammers on mast

## EQUIPMENT

General Equipment

Delta 110lbs anchor

25Kg Bruce anchor in bow locker (10m chain, 80m rope)

Fenders and fender covers (new 2018)

Boat Hook

Flag pole

Suction lifters for floor boards

Cockpit table with telescopic legs

Combined bathing/swimming ladder

Sounding rods for fuel/water tanks

Teak foot rests for helmsman

4x camping gaz bottle, with automatic switchover

Canvas Work

Sprayhood over main companionway with leather trim

Steering wheel covers

Padded cover for cockpit and saloon tables

Canvas floor covers for saloon and aft companionway

Sail cover

Sun awning white on top, blue underneath (2010)

Safety Equipment

Softex total flooding fire extinguisher system for engine and generator space (remote controlled)

Portable fire extinguishers in interior

Deck jackstays in webbing

Safety belts for navigator and cook

1x 8-person liferaft and 1x six-person liferaft

SAILS

**Sail**

**Year Sailmaker Material/Notes**

**MAINSAILS 2018 North Sails 3 Di Ocean 700**

**UPWIND**

**Genoa 2018 North Sails 3 Di Ocean 700**



Storm jib      2005 Doyle Italy    Vectran (Never used)

## **Genoa Stay sail 2018 North Sails 3 Di Ocean 700**

### **DOWNWIND**

Gennaker MPS    2005 Doyle Italy

**Gennaker A4                  North Sails**

### **NOVELTIES AND RECENT REVISIONS:**

- Installation double DTT TV antenna to the first spreaders
- Amplificators with 8 inputs and 4 outputs (5.1 home cinema pre-existing)
- Antenna TV DTT also bow
- Antenna Sat also at the bow
- Decoder DTT and Sat x saloon and the bow
- LinkHDMI PC and for fore and aft amplifier

Then:

- Cleaning and review of all hatch blinds and mosquito nets (about 500 Euros each! more spare parts)
- Hatch seals replacement
- Paint passerelle
- Revision the arm moving again, with no party makeover steel
- Replacement of all the mirrors, including the big one at the stern
- Replacement autopilot hydraulic pump
- Revision windlass Sanguineti

## **Исключения**

При продаже яхты исключаются личные вещи владельца.

## Отказ от ответственности

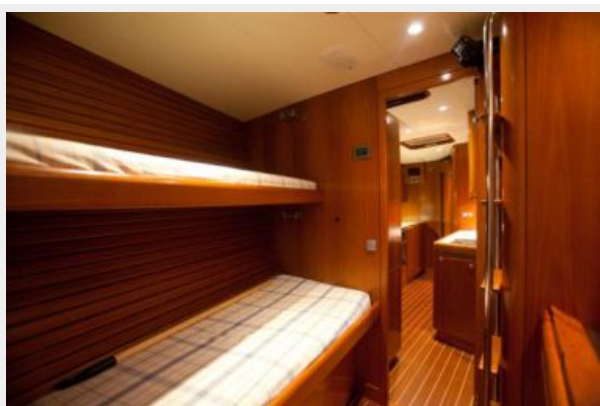
---

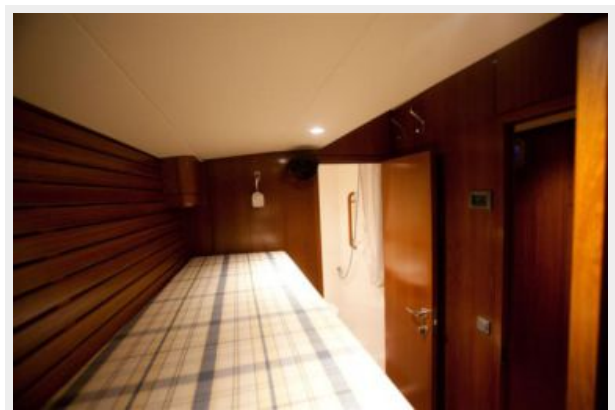
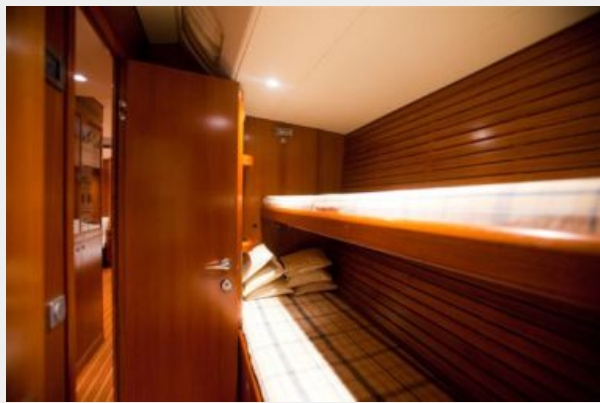
Компания предоставляет описание судна или яхты добросовестно, но не может гарантировать точность этой информации, а также не ручается за техническое состояние. Покупатель должен проинструктировать своих агентов или оценщиков исследовать представленную информацию более подробно, по собственному желанию. Продажа судна или яхты, изменение цены или снятие с продажи будет происходить без предварительного уведомления.

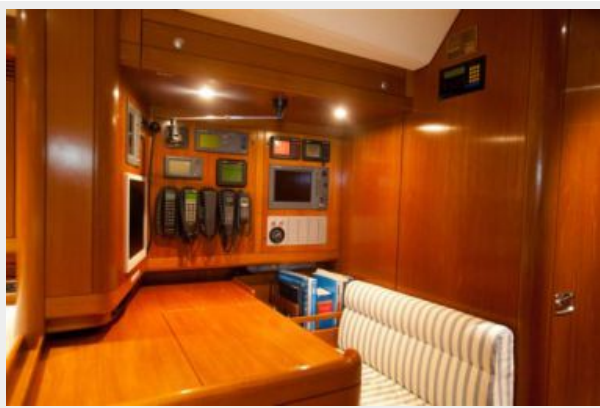
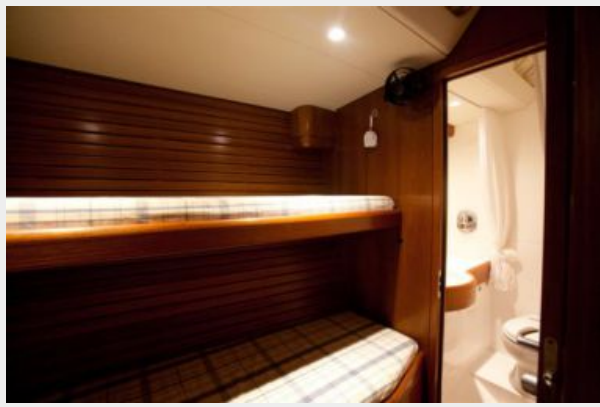
# ФОТОГРАФИИ

















# КОНТАКТЫ

---

Андрей Шестаков (Andrey Shestakov) – ведущий яхтенный брокер отдела продаж яхт и судов компании Shestakov Yacht Sales Inc. Официальный представитель Shestakov Yacht Sales Inc. для русскоговорящих клиентов в центральном офисе компании в Майами/Форт Лодердейл/Флорида/США.

## Контактная информация

---

Email: [andrey@shestakovyachtsales.com](mailto:andrey@shestakovyachtsales.com)

Web: [shestakovyachtsales.com](http://shestakovyachtsales.com)

## Телефоны

---

Краснодарский край: **+7(918)465-66-44**

США, Майами, Флорида: **+1(954)274-4435**

## Время работы

---

Понедельник – Суббота: **9:00 - 21:00**  
EDT

Воскресенье: **Закрето**

## Адрес

---



Harbour Towne Marina, 850 NE 3rd St,  
STE 213, Dania, FL 33004