

EXPLOTADOT — NAUTOR'S SWAN



Builder: NAUTOR'S SWAN

Year Built: 1993

Model: Cruising Sailboat

Price: PRICE ON APPLICATION

Location: Spain

LOA: 71' 3" (21.70m)

Beam: 17' 10" (5.42m)

Max Draft: 9' 2" (2.78m)

Our experienced yacht broker, Andrey Shestakov, will help you choose and buy a yacht that best suits your needs **EXPLOTADOT — NAUTOR'S SWAN** from our catalogue. Presently, at Shestakov Yacht Sales Inc., we have a wide variety of yachts available on our sale's list. We also work in close contact with all the big yacht manufacturers from all over the world.

If you would like to buy a yacht **EXPLOTADOT — NAUTOR'S SWAN** or would like help answering any questions concerning purchasing, selling or chartering a yacht, please call **+1(954)274-4435**

TABLE OF CONTENTS

TABLE OF CONTENTS	2
SPECIFICATIONS	4
Overview	4
Basic Information	4
Dimensions	5
Accommodations	5
Hull and Deck Information	5
Engine Information	5
DETAILED INFORMATION	6
SWAN 68-004 EXPLODATOT	6
Exclusions	20
Disclaimer	20
PHOTOS	21
PHOTO-2020-06-23-15-18-17	21
PHOTO-2020-06-23-15-18-16-9	22
PHOTO-2020-06-23-15-18-16-1	22
PHOTO-2020-06-23-15-18-16-4	22
PHOTO-2020-06-23-15-18-16	23
PHOTO-2020-06-23-15-18-16-3	24
PHOTO-2020-06-23-15-18-16-8	24
PHOTO-2020-06-23-15-18-16-6	24
PHOTO-2020-06-23-15-18-16-5	26
PHOTO-2020-06-23-15-18-16-10	26
PHOTO-2020-06-23-15-18-16-2	27
CONTACTS	32
Contact details	32
Telephones	32
Office hours	32

Address

32

SPECIFICATIONS

Overview

Swan 68-004 Explotadot was originally launched in 1993 as 'Solleone' for the chairman of Nautor's Swan. She was the first Swan 68 to feature four guest cabins with a galley forward arrangement, allowing greater separation from guests and crew. In 2000, she was sold to her second owner and relocated to the Baltic Sea under the name 'Cygnus Montanus'. In 2004, her third owner moved her to the south of Italy under the name 'Cardillo Forever' and made the first major refit in 2006/2007 where many systems were upgraded and a new bow-thruster installed. In 2013, she was sold to her current owner and spent the majority of 2014 undergoing a complete refit in Genoa. Some highlights of the refit include:

- Sandblasting and complete osmosis treatment of the hull
- Refairing of the hull with gelshield, primer and antifouling
- Full repainting of topsides and deck in white gelcoat
- New 12mm teak decking
- All new flush hatches with roller blinds and mosquito nets
- Installation of electric opening swim platform/transom door
- Mast removed, serviced and painted in white awlgrip, rods replaced where necessary
- New Carbon park-avenue boom
- New North 3DL mainsail and genoa
- New Code Zero from Elvstrom sails
- Servicing and reconditioning of all deck equipment, new electric motor on mainsheet winch
- All new navigation, entertainment and communications systems
- All overhead lighting changed to LED
- Engine & Generator removed, major overhaul
- New computer system
- All new running rigging

And much more...

Explotadot is currently in the Caribbeans.

Basic Information

Category: Cruising Sailboat

Sub Category: Cruising/Racing Sailboat

Model Year: 1993

Year Built: 1993

Country: Spain

Dimensions

LOA: 71' 3" (21.70m)

Beam: 17' 10" (5.42m)

Max Draft: 9' 2" (2.78m)

Accommodations

Total Cabins: 4

Hull and Deck Information

Hull Material: Fiberglass

Engine Information

Engines: 1

Manufacturer: Perkins

DETAILED INFORMATION

SWAN 68-004 EXPLOTADOT

Swan 68-004 Explotadot was originally launched in 1993 as 'Solleone' for the chairman of Nautor's Swan. She was the first Swan 68 to feature four guest cabins with a galley forward arrangement, allowing greater separation from guests and crew. In 2000, she was sold to her second owner and relocated to the Baltic Sea under the name 'Cygnus Montanus'. In 2004, her third owner moved her to the south of Italy under the name 'Cardillo Forever' and made the first major refit in 2006/2007 where many systems were upgraded and a new bow-thruster installed. In 2013, she was sold to her current owner and spent the majority of 2014 undergoing a complete refit in Genoa. Some highlights of the refit include:

- Sandblasting and complete osmosis treatment of the hull
- Refairing of the hull with gelshield, primer and antifouling
- Full repainting of topsides and deck in white gelcoat
- New 12mm teak decking
- All new flush hatches with roller blinds and mosquito nets
- Installation of electric opening swim platform/transom door
- Mast removed, serviced and painted in white awlgrip, rods replaced where necessary
- New Carbon park-avenue boom
- New North 3DL mainsail and genoa
- New Code Zero from Elvstrom sails
- Servicing and reconditioning of all deck equipment, new electric motor on mainsheet winch
- All new navigation, entertainment and communications systems
- All overhead lighting changed to LED
- Engine & Generator removed, major overhaul
- New computer system
- All new running rigging

And much more...

Explotadot is currently in the Caribbeans.

HULL & APPENDAGES

The hull is of single skin construction using glass/aramid hybrid fibre reinforced polyester laminate. A high proportion of the fibres are unidirectional, giving a stiff laminate with excellent strength and fatigue properties. Structural bulkheads are of plywood laminated to hull and deck with foam strips between. Stiffener flanges are unidirectional lay-ups over foam cores. Engine beds are of GRP with steel inserts. Mast is stepped through the deck onto a galvanized steel

mast step

Finish

- White Awlgrip snow white hull with blue cove and stripes,
- Hull and Deck was painted on 2014
- 68-004 was built with an extended transom giving a length of: 21.77,
- Transom open transom door for swimming was installed on 2014

Steering

Rudder is foam filled GRP with high strength stainless steel stock, supported by two roller bearings

Cable steering gear sheaves provided with guards to prevent jamming. Aluminum steering quadrant bolted to rudderstock. 70" recessed destroyer type wheel with elk hide cover, 1.4 turns H.O. to H.O.

Pedestal with roller bearings and friction brake. Emergency tiller stowed in lazarette.

DECK

General Information

Deck is of GRP sandwich construction with foam core, and glued and through-bolted to the hull.

High density core under the deck fittings

Coaming and coach roof are painted white using Awlgrip paint system in 2014

New flush deck hatches in 2014

New 12mm teak deck in 2014

Teak toe-rail

Deck Equipment

Lofrans Titan electric windlass recessed in locker with remote control, drain and hand pump for chain box

1 CQR anchor 75 lb.

New 100m chain Galv. 12mm Cal-TP36

Spare Danforth 27 kg anchor

Stainless steel TV antenna post aft deck starboard side

Outboard mounting bracket

Bowsprit for Gennaker

Pulpit with seat, stainless lifelines, gates in lifelines and in pushpit.

Seawater deck wash

Fresh-water hot & cold, deck shower

Stowage of three aluminium LPG bottles in self-draining locker under helmsman's seat.

Winches

Harken five function hydraulic power pack

- Primary 2 x 1100/3 STA hydraulic
- Secondary 2 x 980/3 STA hydraulic
- Main Halyard 1 x 66/2 STA hydraulic
- Traveller 2 X 42/2 STA
- Halyards 2 x 66/2 STA
- Mainsheet 1 x 70/3 STC Electric New 2014
- Halyards/Reef 2 x 56/2 STA
- Foreguy 1 x 46/2 STA

Sailing Hardware

- Roller bearing deck blocks for halyards and slab reefing at mast partners.
- Aluminium genoa sheet tracks with recirculating ball bearing cars.
- Aluminium staysail sheet tracks with recirculating ball bearing cars.
- Aluminium main sheet traveller with recirculating ball bearing car
- Deck gear by Harken, **reconditioned on 2014**

INTERIOR

General

All joinery work is done in accordance with the best yacht practice, using first-grade materials.

Teak with hand rubbed satin finish is used for all visible woodwork.

Floorboards with laid teak veneer, providing access to the bilge.

Quick pins provided for lifting the floorboards.

Topsides where visible lined with teak battens.

Roller blinds/mosquito screens for hinged deck hatches new on 2014

Cabinets, tables, bureaus, seats, dressers etc. have rounded corners.

Doors, partitions and paneling throughout are teak-faced plywood.

Door sills have stainless steel chafing pieces.

Self-engaging latches with bumpers to hold doors in open position.

Hanging lockers are equipped with rods and hooks and have bottom drawers where possible, and their doors are provided with louvers for ventilation

Drawers are secured with latches.

Wooden companionway ladders with non-slip steps

Overhead LED lighting throughout yacht

Reading lamps at each berth

Red nightlights throughout

Interior Arrangement

Forward Cabin (Crew Cabin)

- Access from galley,
- Fixed wooden berth to starboard with Pullman berth above,
- Work bench and sail stowage to port.
- Crew head/shower forward with lockers, mirrors and sink.

Forward Amidships Cabin (Guest Cabin)

Guest cabin port side forward of saloon (door from the saloon) with berth outboard and a folding Pullman berth above. Mirror on bulkhead, lockers; private ensuite head / shower area, mirrors, storage lockers and vacuum WC

Aft Port Cabin (Guest Cabin)

Fixed lower double berth with Pullman berth above,
writing desk, storage lockers,
ensuite head/shower with vacuflush toilet, sink, mirrors and storage lockers

Aft Starboard (Guest Cabin)

Fixed lower berth with Pullman berth above, storage lockers
Ensuite head/shower with vacuflush toilet, sink, mirrors, and storage lockers

Aft Cabin (Owner's Cabin)

Owner's cabin aft with large centre-line double berth,
Desk / vanity unit port side,
Settee to starboard, large hanging lockers,
Ensuite head forward to port with white Corian surfaces, Vacuflush toilet
Perspex door to separate shower stall with teak grating.
Mirrors, heated towel rack and storage lockers

Saloon

L-shaped settee on port side, with dining table;
Bookshelves and lockers outboard; two removable teak chairs fix on centerline.
L-shaped settee sofa with coffee table to starboard with lockers,
Entertainment systems all new 2014

Galley

Located on the Starboard side of the yacht forward of saloon with access to saloon and crew quarters

Two sinks and dishwasher are located inboard

Corian counter tops

Oven space outboard lines with stainless steel

Storage lockers, Washer and Dryer new 2014

New Ocean Chef 3 cooker (GN Space Galley)

Galley Equipment

Alpes Inox four burner stove

Extractor fan

Microwave oven

Sea water tap in sink

Iceberg engine driven compressors for fridges and freezer

Additional 220v compressor for fridge and freezer.

Extra 24v fridge compressor for cool box under galley

Miele washing and dryer machine

Engine Room

Engine space internally sound insulated for maximum noise reduction.

fire resistance meeting SOLAS B-15 requirements.

Drip tray integral with engine bed

ENGINE & SYSTEMS

A refit in the engine room was done, which consist in:

- . Main engine: Amendment of the Perkin 180 hp.
- . Generator: Amendment of the Kohler Diesel 20Kw.
- . They changed the old hoses and pipes for new ones, new LED illumination and a new fire extinguisher system.

Major service in 2014, removed from boat, stripped and rebuilt, gearbox service

Replacing n: 4 silent block engine

Overhaul turbine, heat exchangers and Injector, control compression engine

Replacing diesel fuel level indicators and h2o

Total fuel capacity 1400 litres in three separate steel tanks

3 blade MaxProp feathering propeller, reconditioned in 2014

Dual Separ SWK 2000/5UK - fuel filter / water separator with alarm on feed lines

Bow Thruster (installed 2008)

Max Power R200 hydraulic retractable bow thruster

with two separate battery banks 1400 Amp new 2014

PLUMBING SYSTEMS

General

All systems are based on reliable components with world-wide service.

Fresh Water System

Total fresh water capacity l. 1.580 in four steel tanks

Water-maker HRO 230v ~200 l / hour (revised 2014)

55LT Quick inox hot water heater (new 2014)

Fresh water pump Gianneschi New 2014

Black Water System and Toilet System

4 Vacuflush toilets with fresh water and 1 with seawater (crew cabin)

Stainless holding tank for one head with electric pump out

Sump tanks with electric sump tank pumps for all showers and wash-basins (except for crew)

sea cocks reconditioned in 2014

Bilge Pump System

One auto/manual switch electric pump for engine bilge and one for emergency directly connected with sea water engine cooling

Four bilge pumps, two electric with one auto/manual switch, two manual Whale Titan

VENTILATION SYSTEM

Air conditioning

New Air Conditioning system. Changed the old system for a 3 new Dometic kit.

- Dometic MCS T12 (12.000 BTU/H)

- Dometic MCS T16 (16.000 BTU/H)

- Dometic MCS T16 (16.000 BTU/H)

- Total: 44.000 BTU/H

. New Water Maker. Changed the old HRO System for a modern one.

- HRO Parker Seafari, 1.800-2/285 l/h, 220v

ELECTRICAL SYSTEM

AC System

Shore power 230v / 115v AC, 230v outlets inside

Victron Skylla 75 A battery charger for service batteries

Inverter, Victron Atlas 24 / 3.000 W

Replacing all thermal electric panels 24Ve220V

Installation command generator of electric panel

Replacing old light (neon Vetus) behind the mirrors of bathrooms with LED strips

· Replacing lights behind furniture dinette with LED strips

Charge combo pack radio with Victron 3000 w inverter new 2014

Northern Light 22 KW diesel generator new 2014

The generator is mounted inside proprietary sound shield.

DC System

Service batteries, 540 Ah 24v (New 2014)

Engine starting batteries, 135 Ah 24v (New 2014)

Generator start batteries 12v (New 2014)

Separate radio battery bank 8 batteries Victron VMG (460Amp) New 2014,

Separate battery bank for bow thrusters, new 2014

Installation new charger combo pack radio with Victron 3000w inverter New 2014

Hydraulic bank is used for the 2 x 5 kW central hydraulic and the auto pilot pump

Battery banks are located aft of the engine room

New 2 batterie packs: total 810 Ah

ELECTRONIC SYSTEMS

Compasses

Magnetic steering compasses at helm adjustable for global balancing

B&G Zeus Touch2 Multifunction Color Display Touchscreen 7" at the wheel (March 2014)

Dedicated autopilot compass

B&G Halcyon gyrocompass new 2014

Sailing Instruments

Brookes and Gatehouse Hercules 690 instruments: -

- 2 x Jumbo repeaters at mast
- 3 x analogue repeaters in cockpit
- 3 x MFD units at helm plus one at cockpit

Windex unit

B&G Zeus Touch2 Multifunction Color Display Touchscreen 9" at the nav station (March 2014)

B&G Zeus Touch2 Multifunction Color Display Touchscreen 7" at the wheel (March 2014)

B&G Broadband Radar 4G on the mast 1st spreader New 2014

Simrad NAIS-400 Class B AIS Sys New 2014

Simrad NSPL-400 VHF/AIS antenna splitter

Simrad GOFREE WiFi1 wireless Module (to connect Apple I-phone/lpad) New 2014

Simrad NEP-2 Network Expansion Port New 2014

B&G ZG100 GPS 10Hz antenna with built in rate compass (providing heading data for Radar Chart Overlay and Head Up) New 2014

Simrad NMEA 2K/SimNet/Ethernet cables and accessories New 2014

Navionics Platinum+ Cartography Mega Wide Mediterranean

New Elvstrom Cruising Asymmetric: 317m2, with a Oxley 80x54 snuff

Communcation Systems (all new 2014)

Yachtspot Internet Wi-Fi system that searches for public "hot-spots" and broadcasts them onto the yachts local area network (LAN/WLAN)

Communications WiFi, 3G to PC

Moxa G205A Poe 5 port full Gigabit unmanaged Ethernet switches with 4 IEEE 802.3 af/at PoE ports

Moxa EDS205A 5 port ethernet switches 10/100 BaseT(x) RJ45 connector

2 Netgear WNAP320 Access point Wireless-N 300Mbps IEEE 802.11b/g/n at saloon and AFT cabin MF/HF Radio

Yachtspot 4G+ WiFi

Cable LMR400 to 1st Spreader (25m), connectors

Banten 01990 GSM-UMTS antenna for 3G at 1st Spreader

Cable LMR400 to 1st Spreader (25m), connectors

Banten 02188 WiFi antenna for 3G at 1st Spreader

Aerials

Yachtspot 4G+ WiFi

Cable LMR400 to 1st Spreader (25m), connectors

Banten 01990 GSM-UMTS antenna for 3G at 1st Spreader

Banten 15209 Professional VHF antenna 1.2m at top mast

Satellite Communications

New ICM for the Tracphone V3IP

Antenna mounted on transom post

Installation iridium satellite phone with desk station

Entertainment Systems

Antenna TV SAT KVH M7 mounted on Mast

Amplificator Denon AVR X-2000

TV LG "40" in Saloon

TV LG "32" in owner cabin

BLUE RAY – DVD SAMSUNNG

Outside – Inside Sony speakers

Computer Systems

Aqua PRO2 PC 12-24v DC powered, ultra rugged marine PC at navigation station

Fanless design and solid state hard drive, provide totally silent and reliable operation

Compact - measures just 30cm x 27cm x 7cm!

Ultra low power consumption with auto power on

AMD A6-3500 processor for exceptionally fast processing speed

Integral Radeon HD65XX graphics for fast 3D performance on MaxSea TimeZero

8GB Ram

6 USB ports

4 NMEA isolated port

Supplied with Windows 8 home premium operating system (on UK versions)

2 x NMEA Ports and 4 x USB Ports (2xUSB3)

Fitted with CD/DVD RW

64GB solid state hard drive

Yachtspot 12" Touch Screen Monitor at the nav station

MAST & RIGGING

Masthead triple spreader rig with discontinuous Navtec rod rigging,

Mast, Nautor aluminium painted in white in 2014

Rig was removed on 2014

Standing rigging tested with ultrasound, replaced as necessary, 2014

Harken track for fully battened mainsail, lazy jacks

Reckmann R5 manual furling headstay with furling drum recessed below deck level

Navtec hydraulic panel System V with 5 functions (backstay, inner forestay, babystay, boomvang and flattener) reconditioned in 2014

All halyards and all running rigs are new (2014)

Boom

Carbon fibre Park Avenue boom, Withe Paint new 2014

Hydraulic outhaul system

Arrangement for three reefs in the main sail

2 Built-in deck lights

Lazy jacks

Running Rigging

All ropes are Dyneema new 2014

EQUIPMENT

Teak cockpit table in forward cockpit

Cockpit cushions new 2014

Bimini over aft cockpit new 2014

Sun awning new 2014

Carbon passarelle new 2014

Four mooring lines

New fenders, 6 new Fendequip: MaxiStow HD inflatable fender (100 x 30cm) heavy duty

New spray hood, main cover, exterior cushions cover

Tender

3,60 m. rigid inflatable tender

Yamaha 9.9 HP outboard engine,

Safety Equipment

Man overboard module mounted on stern pushpit

Various fire extinguishers, foam / CO2 / powder, New 2014

Fire blanket

New Liferaft, Lalizas SOLAS A (8 people)

Jon Buoy

Overboard system module on stern rail

409 EPIRB on stern rail

SAILS

Sail	Year	Sailmaker	Material/Notes
MAINSAILS	2014	Full-batten Mainsail	Italy, 3DL Carbon
	2009	Full-batten Mainsail	Fully Battened Carbon
UPWIND	2014	North Sails	Italy, 3DL Carbon
	2009	Montefusco	Fully battened Carbon
	2014	North Sails Stay sail	Italy, 3DL Carbon

DOWNWIND 2014 Elvstrom
2009 North Sails

Italy, Code 0
Gennaker

Price may be changed without notice

Boat is offered subject to still being available

The particulars are believed to be correct but not guaranteed

Exclusions

Owner's personal belongings.

Disclaimer

The Company offers the details of this vessel or yacht in good faith but cannot guarantee or warrant the accuracy of this information nor warrant the condition of the vessel. A buyer should instruct his representatives, agents, or his surveyors, to investigate such details as the buyer desires validated. This vessel or yacht is offered subject to prior sale, price change, or withdrawal without notice.

PHOTOS



PHOTO-2020-06-23-15-18-17





PHOTO-2020-06-23-15-18-16-9



PHOTO-2020-06-23-15-18-16-1

PHOTO-2020-06-23-15-18-16-4



PHOTO-2020-06-23-15-18-16



PHOTO-2020-06-23-15-18-16-3



PHOTO-2020-06-23-15-18-16-8



PHOTO-2020-06-23-15-18-16-6







PHOTO-2020-06-23-15-18-16-5

PHOTO-2020-06-23-15-18-16-10

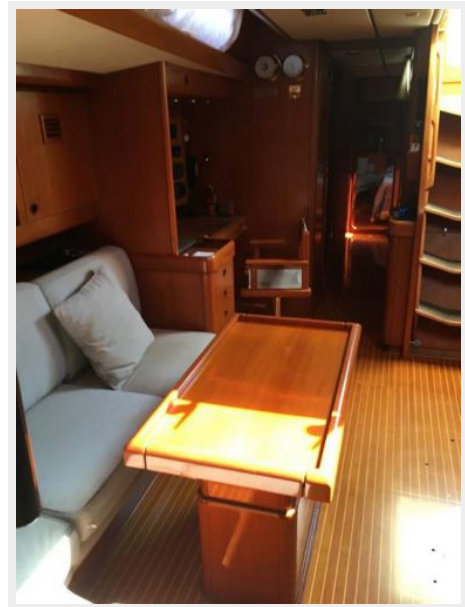
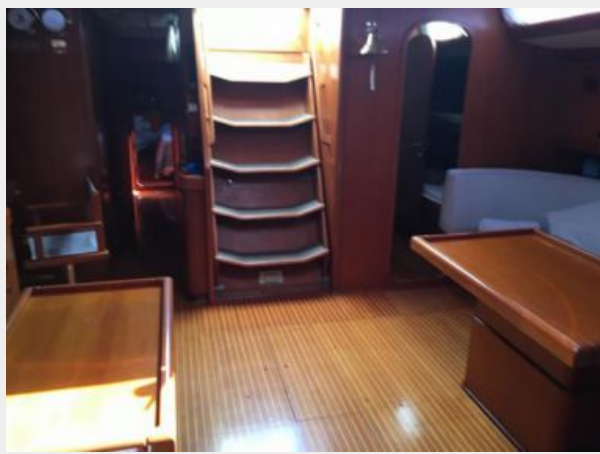
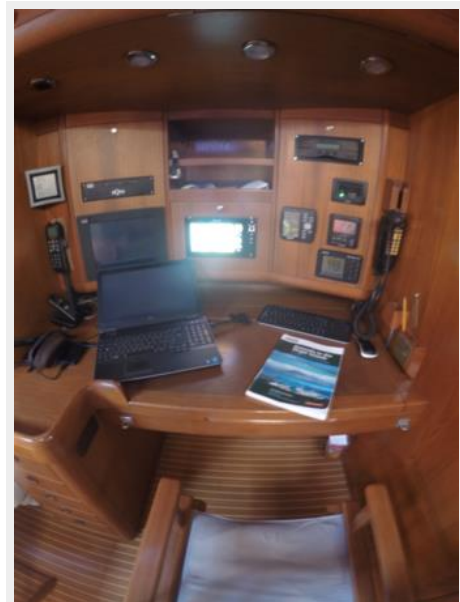
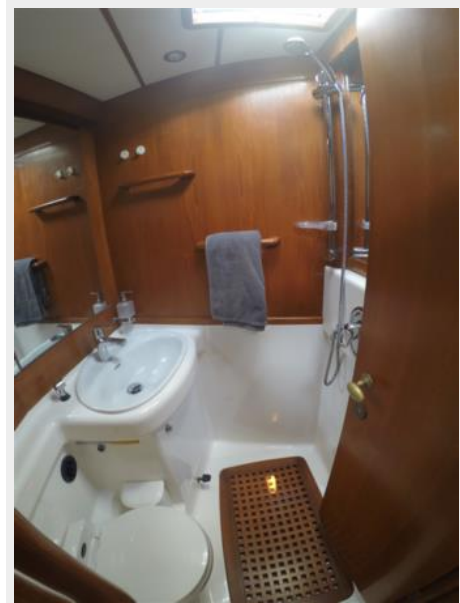


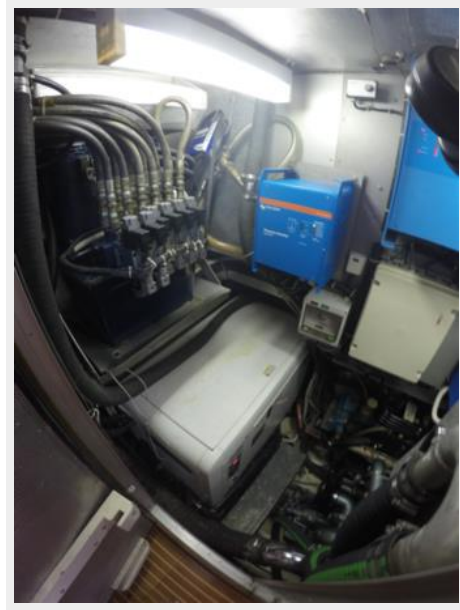
PHOTO-2020-06-23-15-18-16-2











CONTACTS

Andrey Shestakov, leading yacht broker of the sales department of Shestakov Yacht Sales Inc. Shestakov Yacht Sales Inc., the official representative of the Miami/Fort Lauderdale FL headquarters.

Contact details

Email: andrey@shestakovyachtsales.com

Web: shestakovyachtsales.com/en/

Telephones

USA: +1(954)274-4435

Office hours

Monday – Saturday: **9:00 - 21:00** EDT

Sunday: **closed**

Address



Harbour Towne Marina, 850 NE 3rd St,
STE 213, Dania, FL 33004