

CARBON ARROW 72 — MARTEN YACHTS



Судостроитель: MARTEN YACHTS

Длина общая: 72' 3" (22.00m)

Год постройки: 2005

Модель: Крейсерская яхта

Цена: ЦЕНА ЯХТЫ ПО ЗАПРОСУ

Местонахождение: France

Купить **CARBON ARROW 72 — MARTEN YACHTS** а также выбрать подходящую вам яхту из нашего каталога яхт вам поможет опытный яхтенный брокер Андрей Шестаков. На сегодняшний день компания **Shestakov Yacht Sales Inc.** имеет большое количество яхт в собственном списке продаж, а также тесно сотрудничает со всеми крупными яхтенными производителями по всему миру. Для того чтобы купить яхту **CARBON ARROW 72 — MARTEN YACHTS** а также проконсультироваться по любому вопросу связанному с покупкой, продажей, чартером яхт позвоните по телефону **+7(918)465-66-44**.

ОГЛАВЛЕНИЕ

ОГЛАВЛЕНИЕ	2
ХАРАКТЕРИСТИКИ	3
Обзор	3
Основная информация	4
Размеры	4
Размещение	5
Корпус и палуба	5
Информация о двигателе	5
ПОДРОБНОЕ ОПИСАНИЕ	6
Detailed information	6
Исключения	19
Отказ от ответственности	19
ФОТОГРАФИИ	20
КОНТАКТЫ	22
Контактная информация	22
Телефоны	22
Время работы	22
Адрес	22

ХАРАКТЕРИСТИКИ

Обзор

Carbon Arrow is a truly unique yacht, combining the latest technology in racing yacht construction with the modern styling and hi-quality craftsmanship of Marten Yachts, New Zealand. The hull and deck are built in carbon fibre pre-preg with nomex and corecell foam ensuring a strong, light and durable structure. Apart from the teak decking in the cockpit, there is no wood on this boat, all visible surfaces are finished in composite, a monumental amount of work that very few shipyards are able to achieve.

Sailing this yacht is a breeze with fully hydraulic deck and rig controls. Well set up for short or even single handed sailing, the hydraulic systems can even be controlled by remote control allowing freedom of movement around the deck.

In 2007, Carbon Arrow underwent an extensive refit at the Sailing Solutions shipyard in La Ciotat where she was brought to an even higher level of perfection. This refit included but was not limited to the following:

Hull:

- Topsides repainted metallic dark grey Awlcraft paint
- Bottom painted with black antifouling
- Installation of retractable MaxPower bow thruster – 24v DC

Deck:

- Deck re-caulked with white caulking
- Coachroof repainted in black with non-skid
- All stainless steel padeyes fittings replaced with Blew-Stoub/Karver lightweight hardware
- All new deck canvas
- Self tailing tops fitted on winches

Interior:

- Major interior restyling – white painting with many clear-coat carbon features
- New cabin sole in carbon fibre
- All new upholstery in Grey fabric
- Aft cabin divided into two separate twin cabins
- New dark grey metallic Corian in galley

Engine & Systems

- AC Electrical changed from 110v to 220v
- All AC consumers changed to 220v systems
- New Brunton Varifold 4-blade propeller

- New Mastervolt chargers and inverters
- New Hydraulic power pack with wireless remote control
- New B&G GFD displays

Mast & Rigging

- New EC6 Carbon rigging from Southern Spars
- New Backstays in PBO From Future Fibres (2013)
- New Carbon headsail foil and Harken furler
- Total weight savings in rig = 200Kg
- All new custom running rigging – best possible quality

Recent Sails:

- North Sails 3DL 850L Mainsail – full carbon & technora – regatta spec
- North Sails 3DL 850L Genoa – full carbon & technora – regatta spec
- North Sails 3DL 850L Genoa – full carbon - roller furling
- North Sails A2 Spinnaker
- North Sails 3DL 850L Genoa Staysail – full carbon – on flying inner stay

Carbon Arrow is the perfect solution for an owner wishing to participate competitively in offshore/inshore racing while retaining the ability go cruising or day sailing. She combines the composite perfection of a McConaghy racing yacht with the precision and engineering of the finest Scandinavian shipyards.

For additional information or to arrange an inspection, contact our office in Monaco

Note: This is a joint listing with SMN Chantier Naval in Port Grimaud

Основная информация

Тип судна: Крейсерская яхта

Подкатегория: Cruising/Racing Sailboat

Модельный год: 2005

Год постройки: 2005

Страна: France

Размеры

Длина общая: 72' 3" (22.00m)

Размещение

Всего кают: 4

Корпус и палуба

Материал корпуса: Carbon Fiber

Информация о двигателе

Производитель: Yanmar

ПОДРОБНОЕ ОПИСАНИЕ

Detailed information

COMMENTS

The Marten 72 was designed for the performance-orientated owner wishing to combine the exhilaration of a racing yacht with the ability to make fast, comfortable blue water passages. The yacht was designed first and foremost to be a top performer at regattas utilizing the very latest construction materials and techniques from Grand Prix classes such as America's Cup and the Volvo Ocean Race.

By combining the talents of Reichel/Pugh and the SP Technologies engineers, with the experience of Marten Yachts, the result is a yacht with outstanding pedigree possessing race-bred performance qualities with a spacious and functional layout. Ready for fast, comfortable short-handed cruising or regatta victory.

Carbon Arrow was originally launched in 2005 as 'Beecom' and was sold to her current owner in 2007. During the winter of 2007-2008, Carbon Arrow underwent an extensive refit at the Sailing Concept yard in La Ciotat, France. The following is a summary of the more significant improvements that were made:

Hull:

- Topsides repainted metallic dark grey Awlcraft paint
- Bottom painted with black antifouling
- Installation of retractable MaxPower bow thruster – 24v DC

Deck:

- Deck re-caulked with white caulking
- Coachroof repainted in black with non-skid
- All stainless steel padeyes fittings replaced with Blew-Stoub/Karver lightweight hardware
- All new deck canvas
- Self tailing tops fitted on winches

Interior:

- Major interior restyling – white painting with many clear-coat carbon features
- New cabin sole in carbon fibre
- All new upholstery in Grey fabric
- Aft cabin divided into two separate twin cabins
- New dark grey metallic Corian in galley

Engine & Systems

- AC Electrical changed from 110v to 220v
- All AC consumers changed to 220v systems
- New Brunton Varifold 4-blade propeller

- New Mastervolt chargers and inverters
- New Hydraulic power pack with wireless remote control

- New B&G GFD displays

Mast & Rigging

- New EC6 Carbon rigging from Southern Spars
- New Backstays in PBO From Future Fibres (2013)
- New Carbon headsail foil and Harken furler
- Total weight savings in rig = 200Kg
- All new custom running rigging – best possible quality

Recent Sails:

- North Sails 3DL 850L Mainsail – full carbon & technora – regatta spec
- North Sails 3DL 850L Genoa – full carbon & technora – regatta spec
- North Sails 3DL 850L Genoa – full carbon - roller furling
- North Sails A2 Spinnaker
- North Sails 3DL 850L Genoa Staysail – full carbon – on flying inner stay

Description of the refit done in 2015/2016:

Hull repainted in Awlgrip dark grey – 2016

Mast and boom repainted in Awlgrip black mat – 2015

All new teak deck – 2015

New retractable Bow-Thruster Max-Power VIP 250 – 2015

All new B&G Hercules pack – 2016

New head stay – 2015

New set of running rigging – 2016

HULL & APPENDAGES

Hull is constructed in carbon fibre pre-preg with Nomex and CoreCell foam core

Built utilizing a male mould

Laminate specification by SP Systems

Internal bulkheads in carbon/nomex

Retractable bowsprit

Hull Finish

All exterior surfaces are painted with epoxy primer and polyurethane topcoats

Hull is finished in metallic grey Awlcraft (new 2008)

Steering System

Hi-mod carbon rudder blade and stock

Twin three-spoke carbon fibre steering wheels – diameter 1050mm

Carbon fibre quadrant

Composite steering bracket using Vectran cable

B&G Type 3 Autopilot

Emergency Steering system

Keel

Hi-tensile steel keel fin

1% antimony lead keel bulb

8x 19mm keel bolts

DECK

Deck is constructed in Carbon fibre pre-preg with nomex and corecell foam core

Flush hatches, lockers, and storage areas moulded into the deck during construction

Composite deck lockers and hatches

Composite ventilation grills

Composite mast collar

Teak laid deck in cockpit and on cockpit seating

Deck Equipment

Versari – Delmonte pop up cleats one pair on bow, one pair on transom with carbon chafe protection

Stainless steel stanchions, pushpit and pulpit

Stainless steel wire lifelines

Deck/Hydraulics Package

Onboard Systems Installed 24v DC Hydraulic Power Pack

(24V 3.5kW Triple Stage Pumps)

PLC Control Unit

Wireless remote control unit, new 2013

Pedestal mounted panels, new 2013

Hydraulic Functions

· Vang

· Cunningham

· Backstay

· Main outhaul

· Mainsail Trim (via Cariboni Magic Trim)

· Traveller

· Genoa car pullers (port & starboard)

· Winches

Winches by Harken

4x 980.3 STHA 3-speed hydraulic/manual winches

Sailing Hardware

Spinlock clutches

Karver Blew blocks and Blew-Stoub lightweight padeyes

Harken halyard blocks and Genoa cars

Recessed genoa furling unit with under deck furling line

INTERIOR

General

All interior joinery is constructed from lightweight materials carefully selected to meet the highest international standards, creating a practical & functional interior. Machinery and systems are selected for their purpose whilst being sensitive to the handling and performance qualities of the yacht. The construction utilizes the most advanced concepts of prepreg carbon fibre materials, producing a robust, yet ultra-light hull, deck and structure, the equivalent of round the world racing yachts.

The furniture is constructed using lightweight Nomex honeycomb cored panelling with a mix of white painted and carbon fibre clear coat finishes. In keeping with the modern concept of the yacht the interior styling clean and minimalist.

There are eight berths when in cruising mode, on racing mode the boat can sleep twelve crew or more if required

Forward Cabin (Master Cabin)

Centreline double berth with reading lights at the head

Head on aft port side of cabin with separate shower stall, carbon sink and WC, storage lockers, mirrors

Skipper's Cabin

Located Port side Midship

Upper and lower berths

Aft Cabins

On either side outboard, mirror image

Outboard and inboard berths

Folding pipe berth above outboard berth

Ensuite head with carbon WC, shower, storage lockers, sink and mirror

Saloon

Large U-shaped settee to port with carbon fibre dining table eating up to six persons

Settee to starboard side with folding Pullman berth

Nav Station

Located to port, aft of saloon

Forward facing navigator's desk with electronics and displays flush mounted on carbon panel

Electrical panel outboard

Galley

Located aft starboard side of saloon

Corian work surfaces in grey metallic colour

Twin stainless steel sinks inboard

Front-loading refrigerator

Drawers and storage lockers

Top loading freezer

Two-burner gas stove

Electric oven

ENGINE & SYSTEMS

The main engine is a Yanmar 4JH3-DTE 125hp marine diesel. The engine is mounted on soft mounts. The engine is fresh water jacket cooled with a seawater heat exchanger. The gearbox is ZF.

Engine hours 789 on 12.7.13

Four-blade Brunton Varifold propeller (new 2008)

Engine controls are Spinlock, mounted in cockpit with engine tachometer, start/stop and alarms

The diesel tank has a capacity of approximately 160 litres. Tanks have baffles and inspection / clean out plates to permit thorough cleaning and inspection. Deck filler caps are located in side deck recesses with overflow protection.

Tanks are fitted with a tank gauge with display at the navigation station. (Tank tender)

Fuel lines from tanks incorporate a check valve and a shutoff valve. All fuel lines; valves and fittings are stainless steel.

The engine is fitted with a Racor fuel filter.

Inverter SF 45-1 - 2018

Varifold 4 blades folding propeller - 2018

Plumbing Systems

Hot/Cold pressurized fresh water system

Spectra Watermaker

Fresh water capacity 230 l + 320 l (550 litres total)

2 x Carbon fibre 'Tecma x-light' heads

Black water 170 Litres

50-litre hot water tank

Deck shower

Ventilation System

12v Hello Turbo fans

24v engine room extraction fan

24v battery room extraction fan

Drainage System

Electric and Manual bilge pumps

ELECTRICAL SYSTEM

DC System

A 24 VDC service battery bank will be split into two sections. One section supplies the DC Power pack, the other supplies the ships services and electrical systems

Service battery AGM6V 400 Ah

Hydraulics battery AGM6V 1200 Ah

Bow Thruster Optima battery 24V/120Ah

Engine start battery 12v/135Ah

Halogen lighting

AC System

220V AC system

Powered via inverter or shore power

A 220V AC, 1 phase grounded shore power system may be installed. The shore power is lead through a galvanic isolator. The shore power inlet is located in a dedicated locker aft to keep the cable run inside the yacht as short as possible. A 15-meter heavy-duty cable with plug is provided.

All watertight bulkhead cable penetrations will maintain watertight integrity and sound insulation properties.

Chargers/Inverters

Engine is fitted with a 2 X 24v 175-amp alternators for charging the house batteries and a 12v 55-amp alternator for the engine start batteries.

Mastervolt Inverter 2500W

2 x Mastervolt Battery Chargers (Hydraulics / Service Batteries)

House batteries bank – new 2017

Engine batteries bank – new 2017

ELECTRONIC SYSTEMS

Sailing Instruments – B&G Hercules (All new pack in 2016)

Depth sounder

Log / Boat Speed

Performance processor

Autopilot

Wind speed and direction

4x GFD displays

2x analogue wind instruments

5x 20/20 displays on mast bracket

B&G Autopilot controls

Navigation Instruments

1 B&G H5000

Furuno NAVnet 10.4" Colour LCD Radar/Plotter

8.4" Sunlight Repeater Screen on steering pedestal

Computer Systems

22" LCD flat monitor at Nav station

PC NISE 3110 with MaxSea chart plotter software

Communications Systems

Eurocom Mach II Iridium Sat Phone

Furuno Marine GMDSS SSB

Furuno VHF c/w DSC

Furuno Navtex

Entertainment Systems

Alpine CD/Stereo connected to saloon and cockpit speakers

MAST & RIGGING

Mast & Boom by Southern Spars

Three-spreader high modulus carbon mast

Slab-reefing carbon boom

EC6 carbon rigging (2008)

PBO backstay, Kevlar check stays and inner forestay

All underdeck leads

Custom running rigging package

EQUIPMENT

General Equipment

40-foot container with electrical connection, workbench, shelves and full height cabinets

Collapsible shipping/storage cradle

Large removable cockpit table with folding leaves

Deck cushions

Fenders & mooring lines

Folding carbon fibre passarelle

Safety Equipment

Carbon look Jonbouy mounted on pushpit

2x liferafts

New Rudder Bearing by JP3 – 2018

SAILS

Sail

Year Sailmaker Material/Notes

MAINSAILS

Full Battened Mainsail 2016 North Sails 3DI

Race Main 2005 Quantum

Cruising Main 2005 Quantum

Storm Trysail 2005 Quantum

UPWIND

Furling Genoa 2016 North Sails 3DI

Furling Staysail 2016 North Sails 3DL

Cruising Genoa	2005 Quantum
Code 2	2005 Quantum
Code 2B	2005 Quantum
Code 3	2005 Quantum
Code 3B	2005 Quantum
Code 4	2005 Quantum
Jib Top	2005 Quantum
Genoa Staysail	2011 North Sails 3DL Full carbon
Heavy Weather Jib	2005 Quantum
Racing Genoa	2008 North Sails 3DL Full carbon

DOWNWIND

Gennaker G2	2016 North Sails
A2 - Spi	2008 North Sails
Spi Staysail	2005 Quantum w/furler
Code Zero	2005 Quantum w/furler Karver KF12
R Zero	2005 Quantum

R one	2005 Quantum
R three	2005 Quantum
R fourA	2005 Quantum
R fourB	2005 Quantum
R five	2005 Quantum
R seven	2005 Quantum
R nine	2005 Quantum

Price may be changed without notice

Boat is offered subject to still being available

The particulars are believed to be correct but not guaranteed

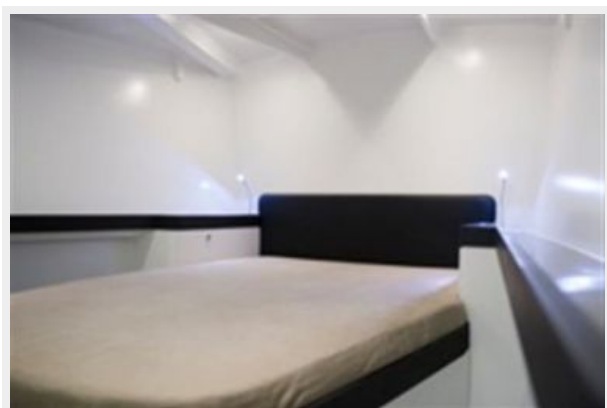
Исключения

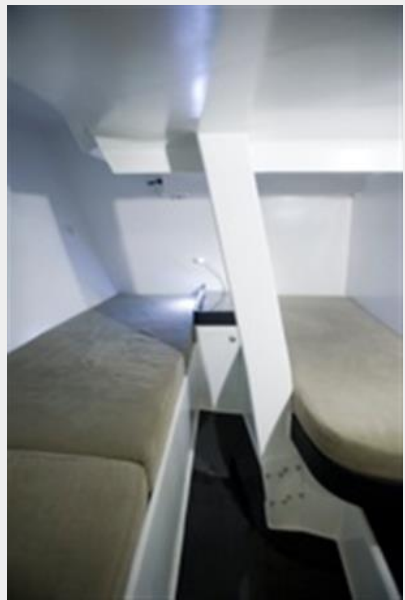
При продаже яхты исключаются личные вещи владельца.

Отказ от ответственности

Компания предоставляет описание судна или яхты добросовестно, но не может гарантировать точность этой информации, а также не ручается за техническое состояние. Покупатель должен проинструктировать своих агентов или оценщиков исследовать представленную информацию более подробно, по собственному желанию. Продажа судна или яхты, изменение цены или снятие с продажи будет происходить без предварительного уведомления.

ФОТОГРАФИИ





КОНТАКТЫ

Андрей Шестаков (Andrey Shestakov) – ведущий яхтенный брокер отдела продаж яхт и судов компании Shestakov Yacht Sales Inc. Официальный представитель Shestakov Yacht Sales Inc. для русскоговорящих клиентов в центральном офисе компании в Майами/Форт Лодердейл/Флорида/США.

Контактная информация

Email: andrey@shestakovyachtsales.com

Web: shestakovyachtsales.com

Телефоны

Краснодарский край: **+7(918)465-66-44**

США, Майами, Флорида: **+1(954)274-4435**

Время работы

Понедельник – Суббота: **9:00 - 21:00**
EDT

Воскресенье: **Закрито**

Адрес



Harbour Towne Marina, 850 NE 3rd St,
STE 213, Dania, FL 33004