

OYSTER 655 PROTEUS — OYSTER YACHTS



Судостроитель: [Oyster Yachts](#)

Длина общая: 67' 8" (20.60m)

Год постройки: 2007

Модель: Cutter

Цена: ЦЕНА ЯХТЫ ПО ЗАПРОСУ

Местонахождение: United States

Купить Oyster 655 Proteus — Oyster Yachts а также выбрать подходящую вам яхту из нашего каталога яхт вам поможет опытный яхтенный брокер Андрей Шестаков. На сегодняшний день компания Shestakov Yacht Sales Inc. имеет большое количество яхт в собственном списке продаж, а также тесно сотрудничает со всеми крупными яхтенными производителями по всему миру.

Для того чтобы купить яхту Oyster 655 Proteus — Oyster Yachts а также проконсультироваться по любому вопросу связанному с покупкой, продажей, чартером яхт позвоните по телефону **+7(918)465-66-44**.

ОГЛАВЛЕНИЕ

ОГЛАВЛЕНИЕ	2
ХАРАКТЕРИСТИКИ	3
Обзор	3
Основная информация	3
Размеры	3
Размещение	3
Корпус и палуба	3
Информация о двигателе	4
ПОДРОБНОЕ ОПИСАНИЕ	5
Specification	5
Исключения	20
Отказ от ответственности	20
ФОТОГРАФИИ	21
КОНТАКТЫ	27
Контактная информация	27
Телефоны	27
Время работы	27
Адрес	27

ХАРАКТЕРИСТИКИ

Обзор

UNDER OFFER BROKER'S COMMENTS Proteus is the most fully equipped and luxuriously appointed 655 ever built. The original specification included over \$1 million in extras resulting in an Oyster like never before. Her overall build cost was well over \$4.5 million and she would cost far more than that to replace today. The Aurora gold metallic hull, mast boom and pedestals ensure that Proteus receives envious glances wherever she goes. She simply looks stunning. Custom deck gear by Harken together with a Halls Spars carbon mast and boom plus new carbon sails from Doyle and Quantum are just some of the high performance additions that make sailing this yacht exciting yet easily undertaken by a couple. Proteus is equipped with a shoal draft enabling her to access anchorages normally unavailable. She was built to MCA Class 2 for additional safety and for ease of charter. Extra hull insulation plus an Eberspacher heating system allows Proteus to be used for high latitude sailing whilst her high capacity air conditioning units also allow for extended cruising in hot climates. Proteus has it all. Impeccably maintained by a professional, ex Oyster, skipper, Proteus has won no less than three Concours d'Elegance plus she was sailed to a superb second in class in the prestigious Hamilton Island Race Week. Performance as well as stunning looks. US DUTY PAID Early viewing recommended.

Основная информация

Тип судна: Cutter

Модельный год: 2007

Год постройки: 2007

Страна: United States

Размеры

Длина общая: 67' 8" (20.60m)

Размещение

Всего кают: 4

Корпус и палуба

Материал корпуса: GRP

Информация о двигателе

Производитель: Perkins

ПОДРОБНОЕ ОПИСАНИЕ

Specification

BROKER'S COMMENTS

Proteus is the most fully equipped and luxuriously appointed 655 ever built. The original specification included over \$1 million in extras, resulting in an Oyster like never before. Her overall build cost was well over \$4.5 million, and she would cost far more than that to replace today. The Aurora gold metallic hull, mast boom and pedestals ensure that Proteus receives envious glances wherever she goes. She simply looks stunning. Custom deck gear by Harken together with a Halls Spars carbon mast and boom plus new carbon sails from Doyle and Quantum are just some of the high performance additions that make sailing this yacht exciting yet easily undertaken by a couple.

Proteus is equipped with a shoal draft enabling her to access anchorages normally unavailable. She was built to MCA Class 2 for additional safety and for ease of charter. Extra hull insulation plus an Eberspacher heating system allows Proteus to be used for high latitude sailing whilst her high capacity air conditioning units also allow for extended cruising in hot climates. Proteus has it all.

Impeccably maintained by a professional, ex Oyster, skipper, Proteus has won no less than three Concours d'Elegance plus she was sailed to a superb second in class in the prestigious Hamilton Island Race Week. Performance as well as stunning looks.

Early viewing recommended.

CONSTRUCTION

HULL CONSTRUCTION Laid-up GRP, single skin with structural stringers and floors to Lloyds approved design specification. Outer hull laminate incorporating hi-tech custom Carbon/Kevlar laminate. The hull is insulated with foam core and an extra layer of fiberglass to increase interior comfort and reduce condensation and noise.

HULL FINISH Hull colour Awlgrip Aurora Gold metallic with no cove line and a white boot stripe.

DECK CONSTRUCTION Moulded in GRP with balsa core.

DECK FINISH Teak laid decks.

KEEL Shoal draft high performance bulb (HPB) external lead keel.

RUDDER Fully protected skeg-hung rudder. Rudder tip sacrificial and extended to be same depth as keel draft.

STERN DESIGN 'Sugar scoop' stern design with bathing platform trimmed with teak slats and inset moulded steps for access to the stern deck.

EURCD Built to comply with the requirements for Category A – Ocean.

CHARTER CODING Built to MCA Category 2 with all associated safety equipment fitted.

DECK LAYOUT AND EQUIPMENT

ANCHOR Polished stainless steel custom Manson 70kg anchor with 110m galvanised 13mm chain plus 40m MegaBraid rope to starboard. Polished stainless steel custom Manson 40kg anchor with 40m stainless chain plus 90m MegaBraid rope to port. Auto Anchor control on port pedestal with chain reader plus backup windlass up/down control switch for hydraulic windlass. Fortress FX-85 high strength aluminium storm anchor plus 100m of MegaBraid rope and chain. Floating lines to take lines ashore in remote areas.

WINDLASS Lewmar 3500 hydraulic windlass with capstan and Muir chain stopper to starboard. Lewmar 3500 electric windlass with capstan and Muir chain stopper to port.

DECK ACCESS Stainless steel pulpit with front opening push pit. Midship gateway stanchions with stainless steel hinged boarding ladders, which close up to form the side-gates and have custom oval stainless steel extensions for swim ladders. Oval stainless steel custom bathing ladder is stored in lazarette to keep transom look uncluttered. Gate to push pit. Custom carbon passarelle is extra wide, long and stable. Painted in metallic hull paint and overlaid with Teak with carbon vertical posts for both sides, padded stowage bag and spreader bar.

HATCHES Flush Rondal full width custom foredeck hatch with teak deck covering for ease of spinnaker storage. Lewmar alloy-framed deck hatches - all hinged at aft end. Gebo stainless steel clad opening hullports with powder coated interior frames. Gebo aluminium hull ports in coach roof and cockpit.

CANVASWORK Sprayhood to main companionway in Sunbrella Plus colour 'Oyster' with roll-up window, with leather cover on grabrail at aft edge of spray hood. Bimini in Sunbrella Plus colour 'Oyster'. Zip-in sun shades, one side and aft. Covers for cockpit table, pedestals, wheels and winches. Cover for RIB. Cockpit cushions, helm seat cushions, backrests and aft quarter seats made of EZI dry foam with White vinyl covers and all trimmed to match hull paint.

DECK PLUMBING Hot and cold freshwater deck shower in transom locker. Deck wash pump with salt water through hull or fresh water selector valve.

COCKPIT The cockpit is split into separate steering and guest/crew areas. Both cockpits have a clear central walkway between twin carbon painted wheels, giving excellent access from the main companionway to either of the helm positions, or to the aft deck. Stainless steel drinks holders to pedestals and at companionway.

COCKPIT TABLE Custom cockpit table in stainless steel and high gloss varnished teak in diamond pattern to match interior doors, four folding leaves to seat eight with refrigerated cool box.

STEERING Twin custom Isotop carbon Y-spoke wheels on twin custom GRP steering pedestals, all painted in Awlgrip metallic hull paint. Whitlock 'Mamba' torque rod and gearbox steering systems. Covers to wheels.

OUTBOARD BRACKET Boat is set up to have davits, however they have been removed and are not included in the sale

DAVITS Simpson stainless steel davits.

GENERAL Oyster deck saloon profile with 'g5' styling. Stainless steel pulpit with front opening pushpit. Stainless steel fairleads, stainless steel mooring and cockpit cleats. Cockpit and two helms seat lockers. Custom curved stainless chafe protection plates at guardrail gates, fairleads and cleats. Custom oval stainless grab rails at companionway. Custom Bailey Marine engraved stainless deck plates set flush into teak deck. Stainless steel rub rail from bow to stern. Stainless steel grabrails atop deck saloon. Stowage compartment, with removable partition, at forward end of anchor locker for kedge warp and chain stowage. Custom stainless steel bow and stern collision guards. Flush mounted dorade deck plates with stainless steel cowls. Full width lazarette locker with twin stainless steel gas struts. Liferaft cradle in stainless steel for Solas A commercial craft. Lazarette mounting for Dive compressor and diesel heating system. Stern quarter pushpit seats in teak and stainless steel with white vinyl covers trimmed to match hull paint. Two carbon wing profile gold metallic stern antenna posts for communications antennae. Padded helm backrests and stainless steel grab bars with white vinyl covers trimmed to match hull paint at helmsman's seats. Gas locker for dual cooking gas bottles and extra depth for RIB fuel container stowage.

RIG AND SAIL HANDLING

Rig – cutter. Hall Spars carbon mast with extra strong profile is painted to match hull and Hall Spars carbon V-boom with internal boom preventer system. Harken custom anodized mainsail track and trysail track. Navtec stainless steel hydraulic boom vang, two Navtec stainless steel hydraulic backstay adjusters and Navtec stainless steel System VIII 3 valve hydraulic panel for vang, outhaul and backstay. Hydraulic mainsail outhaul. Kevlar running checkstays. Navtec discontinuous stainless steel rod rigging. 'No strike' ion dissipators at masthead. Running rigging mostly Maffioli, to match hull colour. Genoa and staysail primary halyards on Antal stainless steel tracks. Two halyards for mainsail, genoa, staysail and spinnaker. Spinlock ZS jammers for main, spare main, genoa 2, spin 1, spin 2, main reef 1, main reef clew 2 and main reef clew 3. Spinlock clutches for boom preventer, main tack 2, main tack 3, staysail 1, pole lift. Spinlock clutches for lazy jacks, genoa car adjusters, mainsheet traveller.

HEADSAIL FURLING Reckmann hydraulic genoa furler. Reckmann hydraulic staysail

furler. Lewmar Commander 400 power pack for furlers and starboard windlass.

WINCHES Custom Harken deck gear with oversized stainless steel or polished chrome electric winches. 2 x B980.3STECCS primary winches. 2 x B70.2STECCS secondary winches. 1 x B980.3STECCS mainsheet winch. 1 x B44.2STCCS traveller control line. 2 x B70.2STECCS halyard winches, deck mounted. Closed top Lewmar buttons. All foot blocks and turning blocks, are Harken stainless steel, all mast blocks, removable spinnaker blocks and deck tracks are custom anodized Harken to compliment hull colour. Genoa track car adjuster lines on Spinlock jammers and Harken stainless steel blocks.

SPINNAKER GEAR Custom Carbon bowsprit is removable and integrated into stemhead fitting. Carbon spinnaker pole stowed vertically on mast is painted to match hull colour. Spinnaker package includes all required blocks for asymmetrical. Removable spinnaker blocks on Harken removable stainless padeye mounts. Carbon Jockey pole in clear coat carbon is in two parts for ease of storage.

SAILS Main and staysail by Quantum Sails. Genoa by Doyle. Fusion carbon mainsails - fully-battened, with Antal receptacles, Harken switch track for lower stack height and lazyjacks. Doyle Stratis carbon 130% furling genoa. Fusion carbon furling staysail. Doyle Asymmetrical spinnaker with snuffer. Storm jib for MCA requirement. Storm trysail for MCA, Fastnet and Sydney Hobart requirements. Separate Harken mast trysail track. Trysail track.

INTERIOR

GENERAL Eight berths in four cabins, excluding the saloon. Two extra sea berths available in port cabin and owners cabin. Interior joinery finished in honey Teak with key bulkheads painted Desert Island Satinwood for art display. Joinery custom designed to have hidden hinges for a clean line contemporary appearance. Interior designed to be contemporary and luxurious. Essential features include custom sculpted fiddles, 'shadow-gap' joints between panels, flush chrome knobs and no visible hinges. Custom diamond teak patterned veneer for all doors with Mobella Swan handles. Grabrails and armrests in curved oval stainless steel throughout to coordinate with oval plumbing fixtures and accessories. Custom 'square' styling to furniture, diamond pattern teak doors to match custom cockpit Hullports in colour coordinated moulded recesses to allow for hull foam core and powder coated to match headliner colour for a spacious contemporary feel. Cabin sole boards are 80mm wide teak plank vee groove. Surfaces in galley high gloss polished Avonite 'Pearl' and Formica in showers is Glo Alpino to enhance reflectivity and light play. Headlining in mariner ivory. Main saloon ceiling was custom built for smooth curves, aligned to maximize length and accent lighted with coloured LED recessed cove strips. Saloon upholstery, owner cabin upholstery and headboard are supple Metallic Dream Cow by Edelman Leathers. Seating upholstery in cabins is Alcantara. Lee cloths on sea berths. Oceanair Duette shade system inside teak rebates for all cabins. Oceanair "Skyscreens" for all deck hatches. Flyscreens to all opening hull and coachroof ports. White Hella fans for all berths, galley and owners head.

ANCHOR LOCKER Dual windlasses with capstans, one hydraulic and one electric. Divided anchor locker for dual chain and rope storage. Dual hatches with removable brace. Third compartment in forward end. Watertight collision bulkhead aft.

FORWARD SAIL LOCKER Access via Rondal custom extra wide flush teak deck hatch. Warp bar to each side and aft. Stowage compartment in sail locker for primary and secondary Manson anchors for racing or passage making. Outboard motor stowage bracket for crew tender. Carbon jockey pole storage, locker painted white. Watertight collision bulkhead aft of sail locker with separate bilge pump, valved limber drain.

PORT FORWARD TWIN GUEST CABIN With upper and lower single berths. Bottom berth pulls out to make double berth and top berth can fold down to make settee with upholstered back. Large drawer beneath lower berth, hanging locker with drawer and locker below. Forward locker with shelves. Carbon sprit pole storage overhead. Special silent door latches. Separate air con blower and diesel heater controls. Opening hatch and hull port. Computer work station with fold down desk and ship internet access. B&G graphic repeater and intercom to cockpit. TV recessed in bulkhead, Stereo/DVD player in locker, overhead speakers.

DAY HEAD/EN SUITE PORT CABIN HEAD Accessed from forward passageway or port cabin with Dometic VacuFlush electric fresh water WC, separate shower stall, recessed bevel mirrors and Gessi Oval fixtures and towel bars to match saloon. High gloss Avonite Pearl counter surface. Varnished Teak cabinet base. Opening hatch and hullport. Varnished teak vee plank sole boards.

STARBOARD DOUBLE GUEST CABIN To starboard double berth with locker above. Painted bulkhead for art display. Full size chart drawer for ½ fold Admiralty charts. Dual drawers and under-berth locker, hanging locker with drawer and locker below. Stowage below berth and sole. Night stand with dual drawers below. Wine locker with 30 bottle storage. Separate air con and diesel heat controls. Two Savage jet reading lights. Opening Hatch and hullport. TV recessed in bulkhead, Stereo/DVD player in locker, overhead speakers.

STARBOARD DOUBLE To starboard Dometic VacuFlush electric freshwater WC, separate shower stall, recessed bevel

GUEST CABIN HEAD Mirrors and Gessi Oval fixtures and towel bars to match saloon. High gloss Avonite Goldmine counter surface. Varnished Teak shower seat, varnished teak plank sole, varnished Teak cabinet base. Air con vent. Opening hatch and hullport.

SALOON The saloon features a large, L-shaped settee to starboard and a slightly smaller L-shaped settee to port upholstered in Metallic Dream Cow by Edelman Leather. Dining table for eight, custom designed and built by Jamie Perczek, a noted art deco designer.

Table rotates and telescopes up and down, lowers down and folds to make a half size coffee table. Oval stainless grab rail is exposed when folded with Metallic Dream Cow accents. Two custom oval stainless benches may be pinned inboard for use at sea or moved around. Thick leather seats may be removed to reveal glass tops usable as portable oval stainless coffee tables, which match oval handrails. Painted bulkhead forward is extended to hide mast and display four works by Miro (not included). Art lighting highlights the bulkhead. Glass door lockers to port and starboard with mirrored interiors and internal lights highlight Reidel wine glass, champagne flute and wine decanter storage. Oval stainless design highlights include curved companionway rails, curved settee armrests and overhead grab bar. Mariner ivory portlight recesses with ivory powder coated frames lighten cabin. Art lighting highlights Bruvel sculpture (not included) outboard of starboard settee. Saloon has thirty-one overhead lights, ceiling overhead LED colour reveal light strips and kick recess colour LED accent lights controlled by Rako scene lighting system. Savage reading lights for each settee. Companionway steps are 60mm thick with a vee groove to match the teak sole. LED star lights and curved stainless treads highlight the glamorous entry. Lockers below the settee armrests house a washing machine, Raritan icemaker with Seagull water purifying filter and water maker control panel. Stowage below settees is Separate air con and diesel heater controls for port and starboard. Two large opening salon windows provide excellent ventilation.

NAVIGATION AREA To starboard custom layout at same level as saloon settee for ease of communication and immediate external viewing. Forward facing rectangular chart table is designed to hold 1/2 fold Admiralty chart. Extensive state of the art instrumentation is inset in varnished teak faces. Dedicated computer locker. Bookshelf for cruising guides. Upholstered seat in Metallic Dream Cow with heavy-duty drawer and storage below drawer. Oval stainless grab rail. Hinged lockers below sole with voluminous storage. Heavy-duty tool storage drawer with storage below.

PASSAGEWAY Steps lead down from navigation area into passageway, with 3-door access to engine room. Draining wet locker for oilskins below companionway. Storage below all sole boards with lifting rings.

ENGINE ROOM Sound insulated, with 24V lighting and three electric extractor fans. Stowage racks above engine. Remote triggered fire flaps to engine room inlet and extract ducts. Second stainless steel water heater for aft cabin and galley.

GALLEY Custom layout rectangular galley aft of the saloon to port is open to the saloon for ease of entertaining. Cabinets feature flush teak panels throughout including refrigeration doors. All hinges are hidden and knobs are flush for a modern look. Stainless steel rods are set into

worktop as hot pan stands. Delonghi cappuccino maker. Extra over counter lockers, extra drawers and tray, storage locker. Custom stainless mug stowage with spice rack above. Top opening dish drainer/vegetable storage locker aft of sink. Very large food storage area below hinged sole boards provide pantry space. 240V and 120V receptacles for galley counter. Extensive under cabinet and overhead accent lights. Red LED lighting plus fan. Opening portlight to cockpit.

SINKS Double stainless steel sink with Gessi faucet, Seagull water purifying filter with tap, hand operated freshwater backup pump.

COOKER/HOB Force 10 gimballed polished stainless steel 3-burner hob and oven have a stainless backsplash per MCA code requirements. Miele 2-burner induction hob for extra gourmet cooking. Alpes Inox stainless steel filtration hood.

MICROWAVE KitchenAid microwave oven.

REFRIGERATOR Two custom sized front-opening refrigerators have flush teak doors.

FREEZER Top-opening freezer.

STARBOARD TWIN CREW CABIN Off passageway, with upper and lower berths. Two Lockers above each berth. Bookshelf above lower berth. Tall locker with movable shelves. Two drawers and locker below, two lockers under bottom berth. Fans and Savage Jet LED reading lights for each berth. Folding seat. Air con vent and diesel heating control. Opening hull port and port light.

OWNER'S STATEROOM Full width aft cabin with oversized near king-berth with custom Victoria innerspring mattress 270mm thick, Metallic Dream Cow leather covered headboard. Art deco style bevelled mirror design above headboard. Custom headliner with raised ceiling heights and clean lines. Joinery all has hidden hinges. Five under-berth drawers, extensive storage below berth including golf club locker and MCA storm board storage. Sofa length settee to starboard upholstered with Metallic Dream Cow. Convertible into sea berth work desk/vanity with computer storage, locker below and custom swivel chair. Desk folds up to expand sea berth. Bookshelf above desk. Extra tall hanging locker to starboard with shelving outboard and locker

below, hidden firearm locker and hidden safe, four drawer tall boy unit with 32" TV hidden behind retracting bevelled mirror doors. Second hanging locker to port with two drawers and locker below. Two additional drawers and large horizontal locker to port. Nightstand on port side has drawer with locker below, iPod hook-up and speaker switch above. Nightstand on starboard side has drawer and file drawer. Recessed bookshelves to port and starboard. Access from the aft deck via removable oval stainless steel ladder. Air con and diesel heater control with port and starboard vents Rako Lighting controls for overhead, bulkhead accents and bulkhead Chad stainless sconces. Two hatches and two opening hull ports.

EN SUITE HEAD/SHOWER

To port Dometic VacuFlush electric fresh water WC, high gloss Goldmine Avonite counter surface with custom oval stainless curved handrail. Recessed bevel mirrors in teak inset, separate shower stall with extra thick Perspex panels, Gessi Oval fixtures and towel bars to match saloon. Varnished teak shower seat, varnished teak plank sole, varnished teak cabinet base. Gloss Alpino laminate to reflect light. Stainless towel rack with glass shelves. Stainless bookshelf in hull port recess. Air con vent, exhaust fan and Hella fan. Two Heated Myson towel rails. Seagull water filter and tap. Opening portlight and hullport.

ENTERTAINMENT

AUDIO VISUAL SYSTEMS Audio units fitted inside lockers with no visible panels.

PORT FORWARD TWIN GUEST CABIN

15" Toshiba world TV flush in bulkhead. Alpine touch screen DVD/Tuner with iPod interface, pair Focal headlining speakers. Video game and headphone connections. Ship network.

STARBOARD DOUBLE GUEST CABIN

20" Toshiba world TV, Alpine touch screen DVD/Tuner with iPod interface, pair Focal headlining speakers. Video game and headphone connections.

SALOON

32" Samsung LED TV with electric lifting system (concealed behind settee). Alpine touch screen DVD player with iPod interface, Alpine 6 disc CD changer. Alpine 5-way surround sound amplifier, Alpine sub woofer, four B & W CCM 65 flush headliner speakers plus Gallo centre channel speaker. Sky and Turk TV decoders on satellite Tracvision dome. Video game and headphone plugs. Selector switch for other cabins. Magic Eye.

OWNER'S STATEROOM

32" Sony World Bravia LCD TV with link to main salon. Alpine touch screen DVD/Tuner with pair B & W CCM 65 8" flush headlining speakers. Video game and headphone connections. Ship computer connection and display. Deck camera

display. Magic Eye. All hidden behind bevelled mirrored doors that recede flush when opened.

COCKPIT Alpine touch screen DVD/tuner with iPod interface for cockpit in concealed salon locker. Four Pioneer waterproof speakers flush mounted in cockpit. Waterproof remote on starboard pedestal. Plug for portable forward sundeck speakers in companionway.

EXTERIOR TV antenna mounted on mast. Hubbell TV/phone socket at transom steps. KVH Tracvision M3 mounted on carbon pole aft.

ENGINEERING

ENGINE Perkins/Sabre M185C 136kW (187hp), turbo-charged diesel engine. Backup start panel in engine room for service. Remote oil change electric pump for engine and generator. White intumescent paint in engine room per MCA Halyard low water flow alarm.

ENGINE HOURS Approximately 5,440 at October 2017.

PROPELLER Brunton Varifold 4-bladed feathering.

ROPE CUTTER Ambassador AM20 rope cutter on shaft.

ALTERNATORS 88A 24V for engine start battery. Mastervolt 150A 24V alternator for domestic battery charging. Mastervolt Alpha Pro regulator.

GENERATOR Onan 22kW 60 Hz 240V for maximum output or 17.5kW 50Hz 240V selectable.

GENERATOR HOURS Approximately 3,073 at October 2017.

BOWTHRUSTER Sleipner tunnel thruster SP240Tci 15hp.

STEERING SYSTEM Whitlock 'Mamba' torque rod and gearbox steering systems.

HYDRAULICS Lewmar 400 commander system located in sail locker to operate headsail furling, staysail furling, starboard windlass.

AIR CONDITIONING/ HEATING Dometic CruiseAir 18,000 BTU two self-contained units in main salon, reverse cycle. Dometic CruiseAir 16,000 BTU remote unit for forward cabins, reverse cycle. MarineAirre 15,000 BTU split unit remote for Owner's stateroom with DC variable speed fans, reverse cycle. Eberspacher DW16kW diesel heater with eight circulating hot water fan coils: two 3000W in saloon, two in owners cabin plus supplemental electric heat for fast warm-up, one in aft head, one in midship cabin, two in forward cabins for heat without running the generator.

REFRIGERATION Frigomatic 24V DC compressors for refrigerators, freezer and cockpit table. Refrigerators in galley custom sized to maximize capacity, have spare coils for ease of repair and flush teak faces.

WATERMAKER Seafresh 208 with fresh water auto-flush, producing approximately 120 litres per hour. Freshwater flush system.

TANKAGE AND PLUMBING

FUEL 2,000 litres approx. (440 imp/528 US gallons) in two GRP tanks.

WATER 1,750 litres approx. (385 imp/462 US gallons) in two GRP tanks.

TANK TENDER GAUGES Fuel and water tank gauges, with back-up dipsticks.

HOT WATER One insulated 73-litre water heater approx. (16 imp/19 US

gallon) supplying forward guest cabins. One stainless clad 70l water heater in engine room supplying aft cabin and galley. Both tanks heated by the engine's heat exchanger, or by thermostatically-controlled 220V, or by Eberspacher diesel heater. Crossover valving.

PRESSURISED HOT AND COLD FRESHWATER SYSTEM

HOLDING TANKS Polypropylene gravity emptying holding tank to each heads, with electric Wema gauges.

ELECTRICS

SHIP'S SUPPLY 24V.

RINGMAIN AC ring main is 120V 60Hz with fifteen double, outlet sockets. Ringmain is supplied by 4kW inverter and is not affected by shorepower voltage or frequency.

OTHER ELECTRICAL SOCKETS 24V Dri-plug socket on starboard pedestal. 24V socket in anchor locker 24V socket at companionway Multistrip-style sockets at chart table for computer, etc 12V socket at chart table.

BATTERIES Domestic Housebank: twelve Sonnenschein premium 2V gel batteries 24V 800Ah. Engine start, generator start and bow thruster: 24V Optima Red Top batteries and expanded capacity bank. Nav Bank: separate gel batteries 12V charged from a DC to DC converter.

BATTERY MANAGEMENT Extensive rapid charge system for house bank from generator or shorepower with three Mastervolt MASS 24V/100A chargers, with remote control. Mastervolt charger for engine start/thruster batteries Mastervolt BTM1 battery monitor for 24V banks 2-way emergency parallel link system between 24V domestic and engine batteries Volt and Amp display for Nav battery bank.

INVERTER

AC ring main is 120V 60Hz with fifteen double, outlet sockets Ringmain is supplied by 4kW inverter and is not affected by shorepower voltage or frequency. Washing machine, microwave, heated towel rails, LED coloured accent lights operate on battery power via main inverter Separate dedicated 2kW 120V 60Hz inverter powers ice maker and A/V systems Separate 230V 50Hz 800W inverter powers UK and Euro sockets in galley Computers and AV DC gear are powered by 24V DC to 12V DC converters Air con runs on shorepower or generator and uses either 50Hz or 60Hz Dive compressor runs on generator only. Vimar black chrome sockets throughout match light switches. System wiring was set up to accommodate easy change in ring main if ever required.

SHOREPOWER

System designed to accept any European or USA shorepower system with no switching required. 50A shorepower cable and socket in transom on isolation transformer to accept 230V 50Hz or 240V 60Hz. 30A shorepower cable and socket on dual Mass GI transformers to accept 230V 50Hz or 240V 60Hz. Dual Shorepower inlet plugs both aft and forward in sail locker. Miscellaneous plug kit.

INTERIOR LIGHTING

24V Cantalupi halogen downlights throughout in stainless steel or chrome provide warm colour. Eighty-eight fixtures provide excellent overhead lighting, art lighting and hull port lights. RAKO custom scene lighting system used in main saloon and in Owner's stateroom. Main saloon has LED neon type lighting in overhead ceiling reveals, kick recesses and coordinated cockpit under table lighting allowing any colour imaginable for accents. Fibre optic star lights are used to highlight main entry stairs with twelve lights per step. Glass faced lockers are lighted Chad art deco sconces in owners cabin. Hanging lockers are lighted. Red LED lighting is used in all walking areas, overhead in galley, over chart table and aft head headliner. Imtra halogen reading and desk lights in Owners cabin. LED Savage Jet reading lights in salon, mid ship and starboard cabins. Vimar light switches in black chrome.

EXTERIOR LIGHTING

LED white boom lights over cockpit table. LED downlighters on lower spreaders LED spreader uplighters. Imtra stainless steel halogen aft deck lights fitted to each stern post. Blue Savage LED Deck courtesy lights at bathing platform, transom steps and cockpit walkthrough. Lopolight LED navigation lights for bow, stern and steaming. Foredeck floodlight. Lopolight LED Tri-colour navigation light at masthead as backup. Lopo LED white anchor and white strobe light at masthead.

NAVIGATION AND COMMUNICATION**GPS/RADAR CHART PLOTTER**

Furuno GP32 at chart table Furuno. Furuno

NavNet 3D Blackbox, with independent GPS and digital radar dome on mast mounted Scanstrut. Maxsea Charting software in addition to Furuno NavNet 3D. Display on Furuno 15" screen at starboard pedestal. Display on 20" Nec monitor at chart table.

AUTOPILOT Simrad autopilot with control stations at port pedestal and chart table.

WINDEX Windex at masthead.

NAVTEX Furuno FAX 30 Navtex/weather fax receiver displayed on NavNet 3D network.

VHF RADIO Two Simrad RS87 radios with one linked to intercom and hailer. Both have steering pedestal handsets.

SSB RADIO Icom IC-M 802 including ATU-DSC. Wide copper strip from chart table to lazarette and twin large ground plates as SSB earth. Insulated backstay as aerial.

SATELLITE PHONE Sailor 250Fleet satellite phone and BGAN internet. Thrane & Thrane Inmarsat-C communications emergency system with display and distress button at chart table.

PC Digital yacht PC with Nec 20" screen, WiFi router, HP printer/fax. Display also possible on saloon or aft cabin TV.

SAFETY

LIFERAFT Zodiac Solas A commercial 8-man liferaft with Solas A pack. Hydro release.

EPIRB ACR EPIRB.

RADAR REFLECTOR Ecoflex mounted on mast.

BILGE PUMPS Jabsco engine driven pump off engine with manually operated clutch system. Henderson MkV manual pump in cockpit. Jabsco Utility 3000 bilge pump and high level bilge pump with separate audible alarms. Sail locker bilge pump and audible alarm. Lazarette bilge level alarm.

DECK SAFETY Jon Buoy. Inflatable throwing line. Heaving line. Webbing deck jackstays on Wichard padeyes. Cockpit padeyes. MOB button. Emergency tiller.

FIRE EXTINGUISHERS Meet MCA requirement for 2 large and 5 small hand extinguishers. Automatic fire extinguisher in engine room with air intake controls in wet locker. Fire blanket in galley.

ALARMS MarineTrack satellite position reporting coupled with Dolphin security system.

OTHER SAFETY FEATURES CCTV camera. Simrad hailer/fog horn on mast. Watertight bulkheads forward of anchor locker, sail locker, forward cabins and lazarette. Ply blanking boards or Aluminium covers for hatches, windows and port lights per MCA requirement.

GENERAL

RIB/DINGHY Avon Sea Sport 360. Yamaha 40HP 4-stroke outboard motor.

WARPS AND FENDERS MegaBraid dock lines and eight inflatable fenders.

COMPRESSOR Brownie/Bauer dive compressor in lazarette.

CROCKERY/CUTLERY Owner's custom crockery/cutlery.

SAFE

Brick combination keypad safes in aft cabin and saloon.

HEYCO MARINE TOOL KIT**ASSORTED TOOLS, SPARES AND MANUALS**

NB All personal belongings and all other items not expressly listed in the above inventory are excluded from the sale.

Viewing through Oyster Brokerage

Inventory verified by the owner.

NB Name 'Proteus' to be retained by the Vendor.

Issue 17 (OG/OB/ph)

In this transaction we are acting as Brokers only. We are informed that this sale is not related to the Owner's business, trade or profession. Whilst every care has been taken in their preparation, the correctness of these particulars is not guaranteed. The particulars are intended only as a guide and they do not constitute a term of contract. A prospective buyer is strongly advised to check the particulars and where appropriate to have the vessel fully surveyed and inspected, sea trialed and opened up.

looks.

Early viewing recommended.

looks.

Early viewing recommended.

Исключения

При продаже яхты исключаются личные вещи владельца.

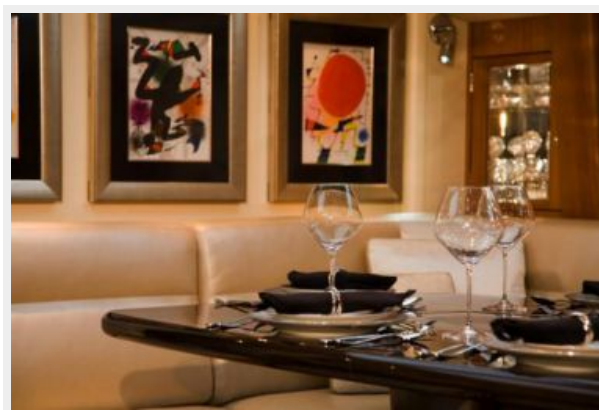
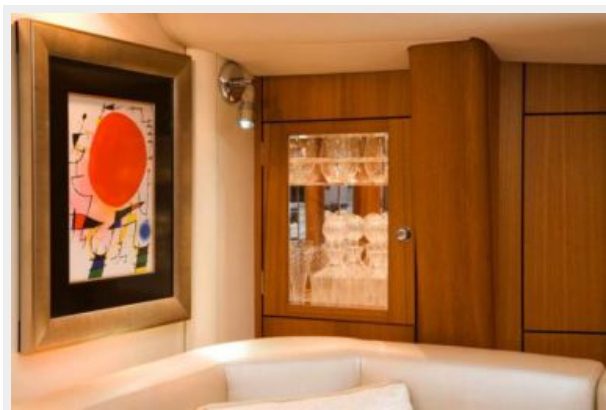
Отказ от ответственности

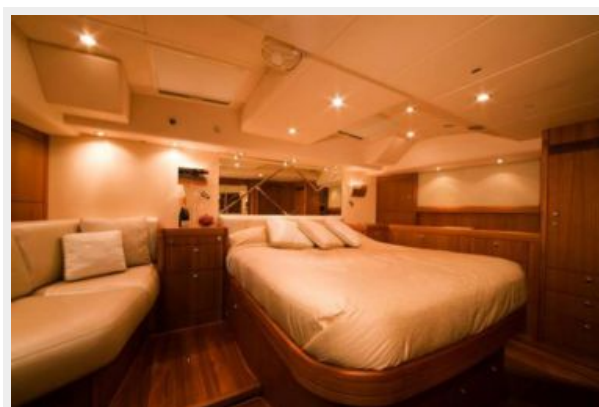
Компания предоставляет описание судна или яхты добросовестно, но не может гарантировать точность этой информации, а также не ручается за техническое состояние. Покупатель должен проинструктировать своих агентов или оценщиков исследовать представленную информацию более подробно, по собственному желанию. Продажа судна или яхты, изменение цены или снятие с продажи будет происходить без предварительного уведомления.

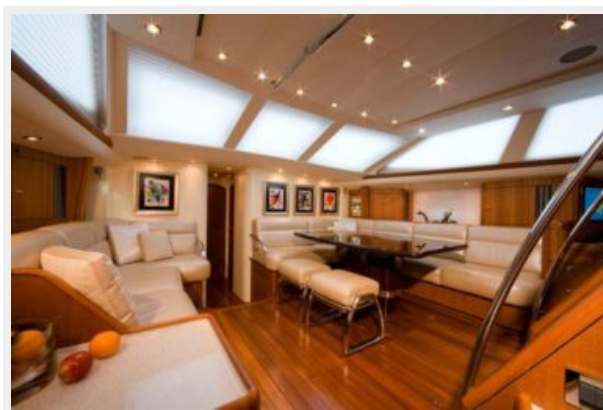
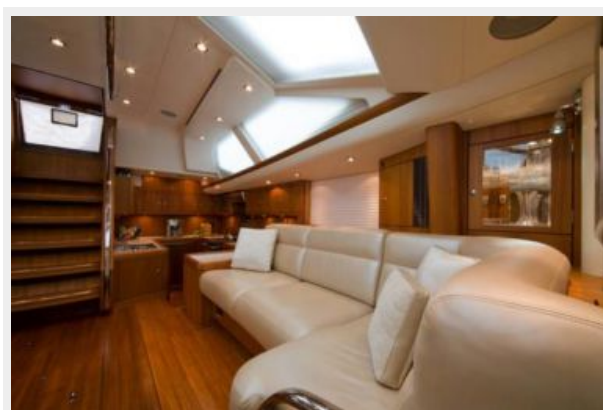
ФОТОГРАФИИ

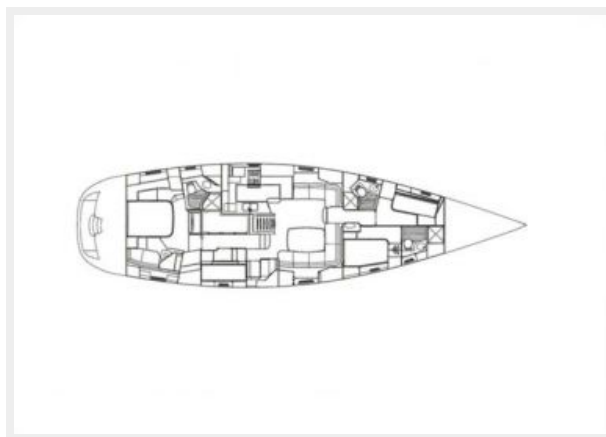












КОНТАКТЫ

Андрей Шестаков (Andrey Shestakov) – ведущий яхтенный брокер отдела продаж яхт и судов компании Shestakov Yacht Sales Inc. Официальный представитель Shestakov Yacht Sales Inc. для русскоговорящих клиентов в центральном офисе компании в Майами/Форт Лодердейл/Флорида/США.

Контактная информация

Email: andrey@shestakovyachtsales.com

Web: shestakovyachtsales.com

Телефоны

Краснодарский край: **+7(918)465-66-44**

США, Майами, Флорида: **+1(954)274-4435**

Время работы

Понедельник – Суббота: **9:00 - 21:00**
EDT

Воскресенье: **Закрето**

Адрес



Harbour Towne Marina, 850 NE 3rd St,
STE 213, Dania, FL 33004