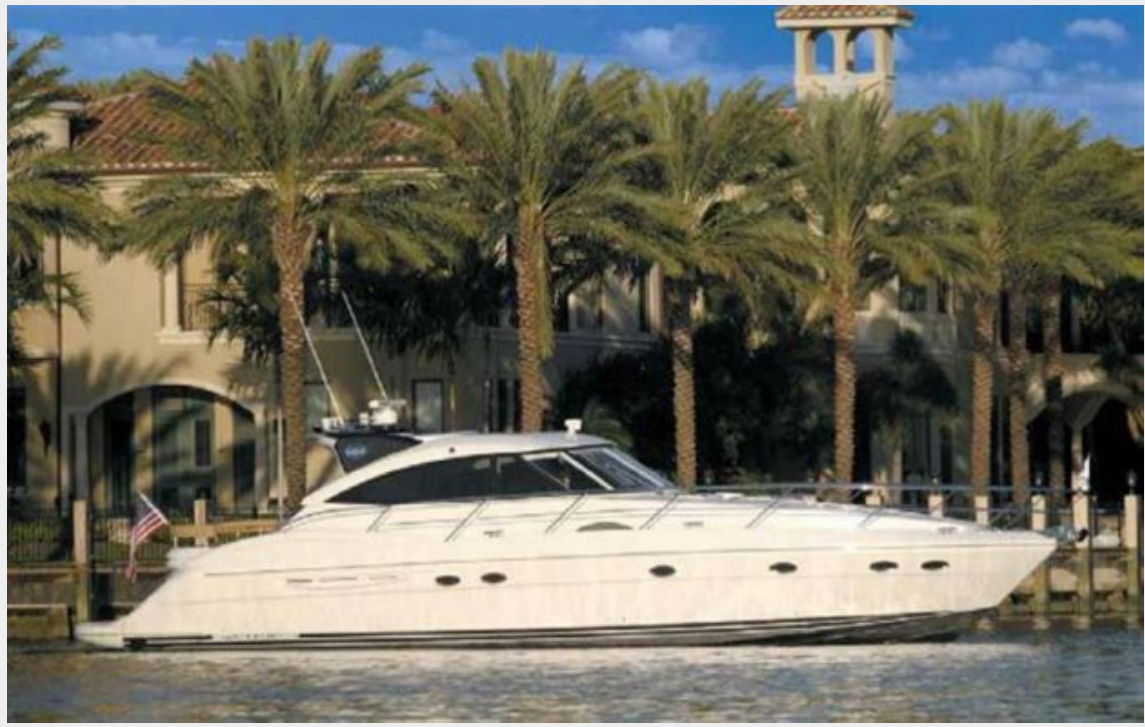


NEPTUNUS 55 — NEPTUNUS



Builder: NEPTUNUS

Year Built: 2005

Model: Cruiser

Price: PRICE ON APPLICATION

Location: United States

LOA: 56' 6" (17.22m)

Beam: 15' 7" (4.75m)

Min Draft: 4' 6" (1.37m)

Max Draft: 4' 8" (1.42m)

Cruise Speed: 28 Kts. (32 MPH)

Max Speed: 32 Kts. (37 MPH)

Our experienced yacht broker, Andrey Shestakov, will help you choose and buy a yacht that best suits your needs **NEPTUNUS 55 — NEPTUNUS** from our catalogue. Presently, at Shestakov Yacht Sales Inc., we have a wide variety of yachts available on our sale's list. We also work in close contact with all the big yacht manufacturers from all over the world.

If you would like to buy a yacht **NEPTUNUS 55 — NEPTUNUS** or would like help answering any questions concerning purchasing, selling or chartering a yacht, please call **+1(954)274-4435**

TABLE OF CONTENTS

TABLE OF CONTENTS	2
SPECIFICATIONS	5
Overview	5
Basic Information	5
Dimensions	5
Speed, Capacities and Weight	5
Accommodations	5
Hull and Deck Information	6
Engine Information	6
DETAILED INFORMATION	7
VESSEL WALKTHROUGH	7
MASTER STATEROOM	7
MASTER HEAD	8
FORWARD STATEROOM	8
FORWARD GUEST HEAD	8
GALLEY	8
LOWER SALON	9
DECK SALON	9
HELM STATION	10
ELECTRICAL SYSTEM	11
DECK EQUIPMENT	11
AFT DECK	12
MECHANICAL EQUIPMENT	12
COMMENTS	13
Exclusions	13
Disclaimer	13
PHOTOS	14
Upper Salon to Starboard	14

Alternate Profile	14
Upper Salon to Starboard	14
Upper Salon to Port	14
Upper Salon Looking Forward	14
Helm	14
Helm to Starboard	15
Helm Electrical Panel	15
Lower Salon	15
Galley	15
Galley	15
Master	15
Master Head	16
Master	16
VIP Guest	16
VIP Guest	16
Guest VIP Head	16
Aft Deck Grill/Bar	16
Lazarette Dryer	17
Lazarette Washer	17
Port Engine	17
Starboard Engine	17
Chilled Water AC	17
Onan Generator	17
Stern Shot	18
CONTACTS	19
Contact details	19
Telephones	19
Office hours	19
Address	19

SPECIFICATIONS

Overview

This vessel is a Neptunus 55 Royale, which is the 55 Cabrio version with solid sliding doors in the upper salon, instead of canvas and it has the large galley to strb at deck level. Sleeps 4 in 2 staterooms. There is one owner and one guest stateroom and two heads both with shower. New \$ 38,000 electronics package installed in 2012 ! New fridges in 2014!

Basic Information

Category: Cruiser

Model Year: 2006

Year Built: 2005

Country: United States

Vessel Top: Hardtop

Dimensions

LOA: 56' 6" (17.22m)

Beam: 15' 7" (4.75m)

Min Draft: 4' 6" (1.37m)

Max Draft: 4' 8" (1.42m)

Speed, Capacities and Weight

Cruise Speed: 28 Kts. (32 MPH)

Cruise Speed Range: 340

Max Speed: 32 Kts. (37 MPH)

Displacement: 47000 Pounds

Gross Tonnage: 23 Pounds

Water Capacity: 130 Gallons

Holding Tank: 95 Gallons

Fuel Capacity: 772 Gallons

Accommodations

Total Cabins: 2

Total Berths: 2

Sleeps: 4

Total Heads: 2

Hull and Deck Information

Hull Material: Fiberglass

Deck Material: Teak

Hull Configuration: Deep Vee

Hull Finish: Aluminum

Hull Designer: Tony Castro

Exterior Designer: Neptunus

Interior Designer: Neptunus

Engine Information

Engines: 2

Manufacturer: MTU

Model: SERIES 60

Engine Type: Inboard

Fuel Type: Diesel

DETAILED INFORMATION

VESSEL WALKTHROUGH

The spacious on deck salon is large and offers seating for up to 6 persons in comfort. The large aft cockpit seat is generous for 5 people, just forward of the aft seat is the wet bar unit with BBQ and sink and large storage locker. The cockpit has a white painted table

Walk thru the Trend Marine curved stainless steel sliding doors into the upper salon from the aft deck. The upper salon features round built in seating for six with a large cherry wood round table with flip over leaf. Opposite of the seating is a large serving counter with Corian like surface with 26" Dynex LCD TV with surround sound, large bar fridge, icemaker and storage. Forward the dash board with beautiful burl wood is large and houses all the navigation and engine displays. The captains and co pilot seat are custom bolstered seats which are adjustable fore/aft. The hardtop has an electric opening sunroof above and a vent forward.

A few steps down you will reach the lower deck area which has the fully equipped custom enlarged galley to starboard and another smaller dinette with seating for three. The lower salon also features large deck side windows with shades and 2 round opening deck hatches.

The master cabin is located aft with walk around, full head room queen size berth with nightstands, 2 hanging lockers, many drawers to port and starboard and large opening portholes covered with Roman shades. Direct access to ensuite head with shower

The forward cabin has a queen size berth. The guest cabin also features a ensuite head with shower.

The entrance to the ER is via a hatch in the cockpit seating. Just behind the ER is the lazarette with separate washer and dryer.

The interior cabinetry is natural cherry wood with high gloss finish. The cabinetry is complemented by ultra leather covered wall and ceiling panels.

MASTER STATEROOM

2 Cedar lined hanging lockers

Queen size berth with inner spring mattress

Built in LG 17" LCD TV with Audiovox DVD

Bose speakers with link to main system

Overhead Halogen lights on dimmer

Designer choice bedding and pillows Arched entry door Digital AC controls (3) Drawers and (4) cabinets to port (6) Drawers & (6) cabinets to starboard (2) Brass sconce lights (4) Panel mirrored aft bulkhead behind berth

MASTER HEAD

En suite head with shower Marble flooring in head Corian countertops Vanity w/storage below & under mount sink above Raritan toilet Clear shower door Handheld or wall mounted shower fixture (3) Overhead lights Opening porthole w/Duette shades Mirrored overhead

FORWARD STATEROOM

Arched entry door Two Cedar lined hanging lockers

Queen size berth with inner spring mattress

Built 14" Toshiba LCD TV w/DVD

Bose speakers with link to main system

Overhead halogen light on dimmer

2 Reading Lights Digital AC controls

Designer choice bedding and pillows (4) Opening stainless steel portholes w/Roman shades (5) Cabinets port & starboard cabinets starboard over porthole (2) Drawers under bed Rope lighting under bed Overhead deck hatch, port & starboard to access berth

FORWARD GUEST HEAD

Door from Forward Stateroom or Lower Salon area Marble floor Vanity w/storage below & under mount sink above Opening porthole w/Duette shades Raritan toilet Mirrored overhead (3) Overhead lights Stall shower, clear glass door, handheld or wall mountable fixture

GALLEY

Large Granite counter top with under mount sink and garborator

Kitchen Aid drawer style fridges (2) and drawer style freezers (2)

Built in AEG stainless steel under counter oven

Emerson convection microwave, stainless steel

AEG 4 Burner stovetop w/granite fiddle

Large curved pantry

Exhaust fan

Halogen lights with dimmer Separate drinking water tap (12) Cherry cabinets (4) Cherry drawers
Bamboo flooring Soffit type AC delivery (6) Overhead halogen mini spots (2) Opening stainless
steel portholes w/Duette shades

LOWER SALON

L shaped dinette seating

Cherry wood table on pedestal

Storage compartments under seating

Central vacuum outlet

Bottle storage cupboard

Carpeted sole (6) Cherry cabinets (5) Halogen overhead mini spots (2) Opening portholes
w/Roman shades Storage under sole Digital AC controls

DECK SALON

Half round seating for six with ultra leather upholstery

Cherry wood table with flip up leaf

Bose life style 48 with surround sound

26" Dynex LCD TV

Bamboo Hardwood flooring w/runner

Large U-Line bar fridge

Large electric sunroof

Electric vent for fresh air at helm

(2) Windshield wipers

Custom bolstered captains chairs and co pilot chair

Chart table

(10) Ceiling lights

Low level courtesy lights

Curved Trend Marine stainless sliding door to Cockpit w/insect screen (2) Large storage cabinets to port Corian like countertop to port Main electric panel Cherry hand rails

HELM STATION

KEP 12" Plotter display, new in 2012, with depth and speed input

Garmin radar, open array

Aft deck camera

Raymarine ST6001 autopilot

Standard Horizon VHF w/DSC

Raymarine ST60 Wind instrument

2 MTU LCD engine displays

2 MTU Chrome Throttle controls with Synchronizer

Wema fuel gauges

Trim Tab control switches

ACR 100 remote control Search light

Whistle control for Kahlenberg horn

5" Ritchie magnetic Compass

Hydraulic power assisted steering with manual back up

Bilge pump control panels (4) with (3) digital counters

Halon system with manual override

Navigation lights

Kahlenberg horn

Vetus bow thruster

Automatic fire extinguishing system Generator "on" indicator Tilt wood helm wheel (3) AC vents Defogger system Furuno Nav Net 3D Control pad for radar/plotter Wiper controls Large storage area under helm chairs Remote Raymarine VHF speaker Garmin 7212 plotter, touch screen Cherry footrest Digital AC controls

ELECTRICAL SYSTEM

12 and 24 Volt alternators

25 Gallon Waterheater

120 Volt Grundfos house water pump w/expansion tank

240 Volt Electrical breaker panel with gauges w/(20) breaker protect circuits 120 Volt Electrical breaker panel with gauges w/(8) breaker protect circuits

12 Volt Electrical breaker panel with gauges w/(48) breaker protect circuits

50 Amp shore power cord on cable master

50 Amp transformer, Charles Isoboost, controls at main electrical panel Halogen and rope lights (DC) thru out

Courtesy light (DC) thru out Main water gauge at electrical panel Waste gauge at electrical panel Digital voltmeter DC Digital amp meter DC Digital voltmeter AC Digital amp meter AC Glomex Terrestrial TV antenna controls at main panel Onan 13.5 KW gen set in sound shield 1138 hours

DECK EQUIPMENT

Lewmar 3 windlass with 150' of high tensile chain Up & down foot switches

Custom stainless steel anchor

All welded bow rail with centre pipe For burgee

Heavy duty white rub rail with stainless cap

4 Black fenders and 4 black lines

Kahlenberg air horn

Port & starboard rail break w/ladder

ACR electric search light

Navigation and anchor lights

City water inlet

Anchor wash down spigot at bow

Custom large S/S Port Holes with screens

Electric retractable hose master by Glendenning Fiberglass nonskid forward Deck access to anchor locker Dual spring line cleats (3) Round Bomar deck hatches Textulene windshield & side window covers

AFT DECK

Transom stainless steel safety rail Dockside water hookup Teak over fiberglass sole (2) Storage lockers White table on stainless steel base Custom 32" awning aft All exterior seating with weather covers Aft Deck camera Aft Deck LED floodlight Bell LED Courtesy lights at most steps (3) Overhead DC lights (2) Bose speakers TV/Phone inlet (3) Teak steps port & starboard to swim platform 750 lb. Hydraulic swim platform w/teak inserts Stainless steel flagpole Miele Cockpit grill & stainless steel sink External Raymarine VHF speakers Electric retractable hose master by Glendenning Popup cleats for tender Hot & cold shower

MECHANICAL EQUIPMENT

Twin 825 HP MTU engines with Twin Disc transmissions (+/- 950 Hours)

Engines have the optional chrome package

Marine Air chilled water A/C system with 5 zones, (2) 2400 BTU compressors

ER Camera system

10 HP Vetus bow thruster

Fireboy halon system

4 Bladed Nibral propellers

Engine Room air intake filters

Oil tank for oil changes with separate pump

Dual Racor 1000 fuel filters with electric priming pumps & vacuum gauges

Dripless shaft seals

2 1/2 " Stainless steel shafts

4 Rule bilge pumps with (3) counters

Heavy Duty sound insulation in ER with aluminium perforated plate

Aluminium water, waste and fuel tanks

Raritan electric toilets

Sealand macerator pump with timer

Sight gauges on both fuel tanks

Groco water strainers for Engines, Generator and A/C

Separate AEG Washer/Dryer in lazarette 120 Volt Engine Room lights 12 Volt Engine Room lights Walker fuel sep system Fuel transfer pump w/Racor 1000 filter CRS coolant recovery bottles Built in Spot Free water conditioner (2) 220 Volt Engine Room fan Generator coolant recovery bottle Racor 500 generator fuel filter 4 Step teak & stainless steel boarding ladder (2) 386 Gallon fuel tanks

COMMENTS

Very Seriously for Sale! Owner purchased new 65' Neptunus Express, this one must be sold! 1,000 Hour Service already completed. Detailed and ready to go for her next owner!

Exclusions

Owner's personal belongings.

Disclaimer

The Company offers the details of this vessel or yacht in good faith but cannot guarantee or warrant the accuracy of this information nor warrant the condition of the vessel. A buyer should instruct his representatives, agents, or his surveyors, to investigate such details as the buyer desires validated. This vessel or yacht is offered subject to prior sale, price change, or withdrawal without notice.

PHOTOS

Alternate Profile



Upper Salon to Starboard



Upper Salon to Starboard



Upper Salon to Port



Upper Salon Looking Forward



Helm



Helm to Starboard



Helm Electrical Panel



Lower Salon



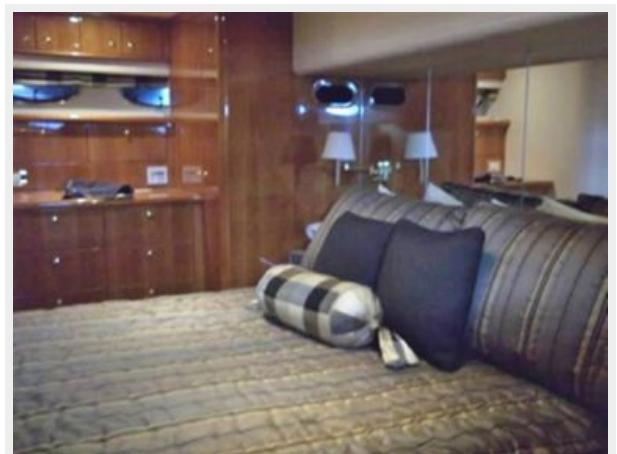
Galley



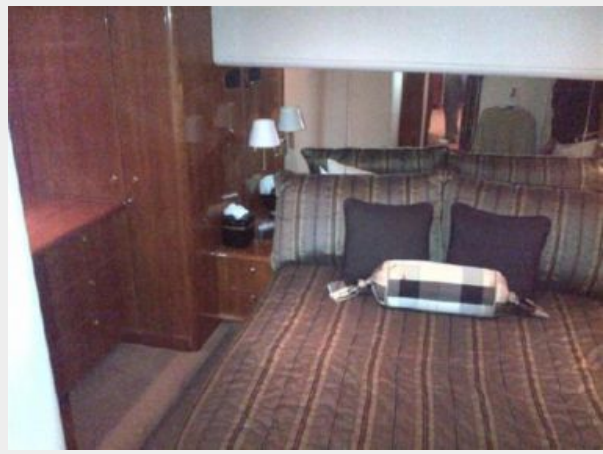
Galley



Master



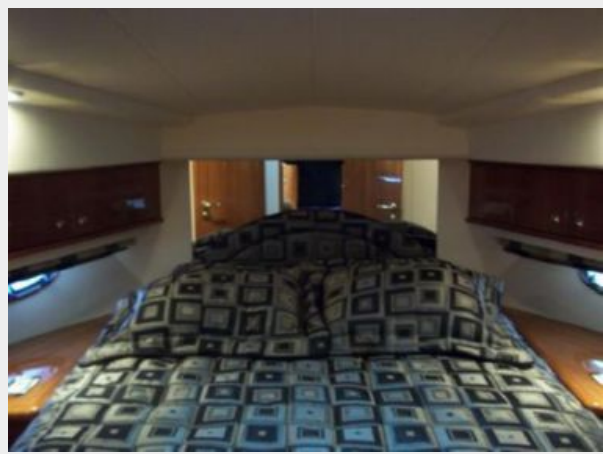
Master



Master Head



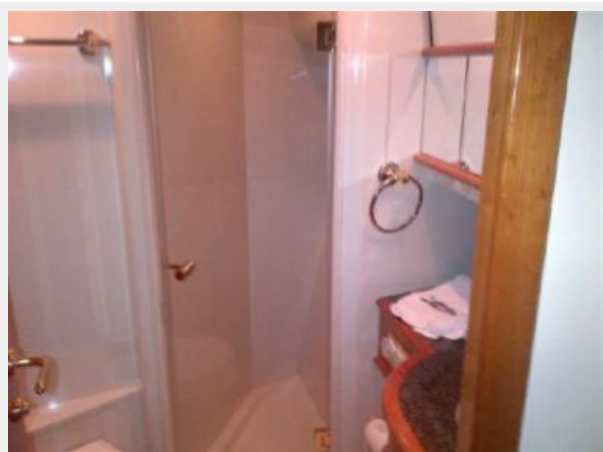
VIP Guest



VIP Guest



Guest VIP Head



Aft Deck Grill/Bar



Lazarette Dryer



Lazarette Washer



Port Engine



Starboard Engine



Chilled Water AC



Onan Generator



Stern Shot



CONTACTS

Andrey Shestakov, leading yacht broker of the sales department of Shestakov Yacht Sales Inc. Shestakov Yacht Sales Inc., the official representative of the Miami/Fort Lauderdale FL headquarters.

Contact details

Email: andrey@shestakovyachtsales.com

Web: shestakovyachtsales.com/en/

Telephones

USA: +1(954)274-4435

Office hours

Monday – Saturday: **9:00 - 21:00** EDT

Sunday: **closed**

Address



Harbour Towne Marina, 850 NE 3rd St,
STE 213, Dania, FL 33004