

IT'S NOON SOMEWHERE — SUNSEEKER



Судостроитель: [SUNSEEKER](#)

Год постройки: 2006

Модель: Моторная яхта

Цена: **ЦЕНА ЯХТЫ ПО ЗАПРОСУ**

Местонахождение: United States

Длина общая: 91' 11" (28.02m)

Ширина: 20' 8" (6.30m)

Макс. осадка: 6' 7" (2.01m)

Крейс. скорость: 21 Kts. (24 MPH)

Макс. скорость: 26 Kts. (30 MPH)

Купить *It's Noon Somewhere* — **SUNSEEKER** а также выбрать подходящую вам яхту из нашего каталога яхт вам поможет опытный яхтенный брокер Андрей Шестаков. На сегодняшний день компания **Shestakov Yacht Sales Inc.** имеет большое количество яхт в собственном списке продаж, а также тесно сотрудничает со всеми крупными яхтенными производителями по всему миру.

Для того чтобы купить яхту *It's Noon Somewhere* — **SUNSEEKER** а также проконсультироваться по любому вопросу связанному с покупкой, продажей, чартером яхт позвоните по телефону **+7(918)465-66-44**.

ОГЛАВЛЕНИЕ

ОГЛАВЛЕНИЕ	2
ХАРАКТЕРИСТИКИ	4
Обзор	4
Основная информация	4
Размеры	4
Скорость, вместимость и масса	4
Размещение	4
Корпус и палуба	5
Информация о двигателе	5
ПОДРОБНОЕ ОПИСАНИЕ	6
Overview	6
Accommodations	6
Main Salon and Dining	7
Office/Study	7
Wheelhouse & Flybridge	7
Electronics and Navigation	8
Deck Equipment	8
Mechanical & Electrical Equipment	9
Galley Equipment	11
Safety & Security Equipment	11
Special Features	11
Tender	12
Remarks	12
Исключения	12
Отказ от ответственности	12
ФОТОГРАФИИ	13
КОНТАКТЫ	20
Контактная информация	20

Телефоны	20
Время работы	20
Адрес	20

ХАРАКТЕРИСТИКИ

Обзор

New audio and video, new Satellite antenna. Original Sunseeker decks were never brilliant so this yacht has brand new teak decks. Approximately 1500 hours on the mains and 6200 on the gens. Tropical air conditioning, shore-power converter. New tender and Jet Ski. Fabulous yacht, really well looked after!

Основная информация

Тип судна: Моторная яхта

Модельный год: 2007

Год постройки: 2006

Год обновления: 2013

Страна: United States

Размеры

Длина общая: 91' 11" (28.02m)

Ширина: 20' 8" (6.30m)

Макс. осадка: 6' 7" (2.01m)

Скорость, вместимость и масса

Крейс. скорость: 21 Kts. (24 MPH)

Дальность на крейсерской скорости:
400

Макс. скорость: 26 Kts. (30 MPH)

Вместимость воды: 396 Gallons

Вместимость сточного бака: 264 Gallons **Объем топливного бака:** 2246 Gallons

Размещение

Всего кают: 4

Спальные места: 8

Спальных мест экипажа: 4

Корпус и палуба

Материал корпуса: GRP

Материал палубы: Teak

Комплектация корпуса: Deep Vee

Дизайнер корпуса: Don Shead

Информация о двигателе

Двигатели: 2

Производитель: Caterpillar

Модель: C-32

Тип двигателя: Inboard

Тип топлива: Diesel

ПОДРОБНОЕ ОПИСАНИЕ

Overview

It's Noon Somewhere is the perfect blend of style, elegance and desire. Her current owner for 8 years has allowed her Captain and crew to spare no expense, providing exemplary preventative maintenance unmatched by any other 28 Meter yacht on the Market. Beautifully appointed with the finest finishes, she boasts 4 ensuite cabins and a crew cabin with crew mess, large saloon and enclosed galley and a huge flybridge area. She is turn key, needs for nothing and has more than her services up to date, she is not to be missed! Not for sale to US residents while in US waters except as allowed under Boat Show Bond.

Accommodations

M/Y Its Noon Somewhere offers accommodation for up to eight guests in 2 double cabins, and two twins. One can be arranged as a double. New Hunter Douglas privacy blinds throughout and new carpet and soft goods in 2013. **Master Stateroom**

1 x King berth 1 x Dressing table with mirror and low-back chair 1 x Walk-in dressing room 2 x Air conditioning 4 x Large vertical portholes with blinds each side (opening portholes) with storm shutters 2 x Telephone points (dressing table and stbd bedside table) 1 x LCD flat screen television Sony Bravia 40" TV with Direct TV/GLA receiver 1 x BOSE DVD/CD/Radio. 1 x Sensor connected to fire detection system 1 x KVH G8 Satellite system with Sky Digibox in the Main Saloon connected to all cabins 1 x Safe box in dressing room Master Stateroom en suite

1 x Tecma toilet 24v 1 x Twin washbasins with hot and cold water 1 x large spa tub **Forward VIP stateroom**

1 x King berth 1 x Dressing table with stool 1 x Air conditioning 1 x LCD flat screen Aquos 32" TV with Direct TV/GLA receiver 1 x BOSE DVD/CD/Radio 2 x Telephone point (port bedside and dressing table) 1 x Sensor connected to fire detection system Forward VIP en suite

1 x Tecma toilet 24v 1 x Washbasin 1 x Shower compartment **Port guest cabin**

2 x Single berths, can be converted into a King berth New custom bamboo pillowtop mattress 1 x Wardrobe 3 x Large vertical portholes with blinds (opening portholes) with storm shutters 1 x Air conditioning 1 x Double AC sockets 1 x Sharp LCD 20" flat screen TV 1 x Sony DVD/CD player 1 x Telephone point (beside bedside table) 1 x Sensor connected to fire detection system 1 x Fire Detection System 1 x Inboard berth on sliding rail to give option of double berth Port guest cabin en suite 1 x Tecma toilet 24v 1 x Washbasin 1 x Separate shower compartment **Starboard Guest Cabin**

2 x Single berths 1 x Wardrobe 3 x Large vertical portholes with blinds (opening portholes) with storm shutters 1 x Air conditioning 1 x LCD 20" flat screen TV 1 x Sony DVD/CD player 1 x

Telephone point (beside bedside table) 1 x Sensor connected to fire detection system Starboard Guest Cabin en suite 1 x Tecma toilet 24v 1 x Washbasin 1 x Separate shower compartment 2 x twin berths on a track that can convert to a King berth

Main Salon and Dining

Walking through the sliding glass and stainless cockpit doors you enter into a beautifully laid out saloon. Her deep cherry gloss wood shows like new, her new fabrics, carpet and linings allow you to feel the presence you would when she was new. The ergonomics are perfect, the upgraded on deck day head and full bar area are fitted, and you have the full dining and loose sofa saloon seating. Everything is of the highest quality and finish, pure thoroughbred Sunseeker to its best, perfectly preserved by her owner to the highest level. 1 x Freestanding sofa to starboard with back to dining area (new 2014) 2 x Freestanding sofa seating in aft saloon with scatter cushions (new 2014) 1 x Coffee table All interior tables refinished (2015) 1 x Dining room table for eight settings 1 x BOSE Lifestyle DVD/CD. SEASOFT entertainment system 1 x flat screen Sony Bravia 40" LCD TV on rise & fall 2 x Control heads for flybridge & aft deck CD/radio system 2 x Air conditioning units and 2 Air handlers 1 x Bar with granite top New granite bar floor 2014 New plumbed in bar sink 1 x U-Line wine chiller 1 x Raritan icemaker 1 x Drinks cabinet with glassware stowage for: 12 x Champagne glasses 12 x Wine glasses 8 x Whisky goblets 1 x Decanter 1 x Day Head 1 x Stainless steel sliding patio door to aft cockpit w/ curtains & tie back 1 x Sensor connected to fire detection system 1 x ASTON Decoder connected to KVH TRACVISION M9 1 x Secondary control in Master Cabin 1 x Fire Detection System - Yacht fire detection system with sensors throughout the vessel and monitoring beside the helm position (Lloyd's approved equipment)

Office/Study

Desk Computer installed HP Envy printer/scanner/copier on network All computer sockets 1 x Telephone point 1 x Sensor connected to fire detection system 1 x Air conditioning 1 x WiFi antenna booster integrated on secure network with 4A cellular waviestream globesurfer

Wheelhouse & Flybridge

Wheelhouse

1 x Sofa seat (re-upholstered 2014) 1 x Table with chart stowage 2 x Telephone points 2 x Leather Besenzoni electric helm seats

Flybridge

Flybridge recaulked 2016 1 x Teak dining table with GRP base 1 x Upholstered sunbathing area forward - all new cushions/Sunbrella 1 x Small seating area located aft of wetbar on Port side - all new cushions/Sunbrella 2 x Fridge and Icemaker under bar area

1 x Portable engines and thrusters control with two plug-in points (1 aft cockpit locker, 1 flybridge below console)

1 x Twin Kahlenberg air horns required

2 x 8-man liferafts in stainless steel racks on aft flybridge area

1 x Starboard side tables on GRP base with folding leaves converts to one long table when leaves are in open position

Electronics and Navigation

Navigation Systems Compass: 2x Ritchie manual compass Automatic Pilot: 1x Simrad AP25 with repeaters on the flybridge, wheelhouse, and electrical system. Echo Sounder: 1x Furuno in the flybridge helm position, wheelhouse and electrical system. Radar (x 2): Furuno radar/chartplotter system, Furuno blackbox 2 x PC display keyboards, 2 x 10.4" video boards on flybridge, open scanner on the flybridge. DGPS ((x 4): Furuno GP 32 GPS stand-alone system. Underwater lights: 7 x Aqualuma type with white LED bulbs. Miscellaneous: Furuno network sounder transducer and black box. Furuno weather antenna.

Communication System

SATCOM: 1 x KVH TRACPHONE V7 VHF: 1 x ICOM IC - M602 VHF, 1 x M604 & 1 x M504 1 x ICOM HM - 127W commandic repeaters in the flybridge, and crew mess Loudhailer: 1 x Horn control in the wheelhouse Miscellaneous: Trim tab controls 2 x Rudder indicators KEP 12" LCD flat panel sunlight monitor for clear weather works, AIS, Nobletech function on flybridge Wheelhouse: 1 x Remote spotlight control 1 x Digital Caterpillar MPD engine instrumentation 1 x Main control panel (AC/DC) 1 x Monitoring panel for fire detection system 1 x Sensor connected to fire detection system 1 x Red light lighting system Security cameras CCTV, Direct TV input Crew mess: Separate washing machine and tumble dryer (new 2014) Small microwave and 2-ring ceramic hob in the crew mess. TV upgraded to 20" LCD in the crew mess. Sub Zero fridge drawer unit in the crew mess, in the electrical system. Furuno depth repeater CCTV Radar repeater

Deck Equipment

1 x New main deck teak (2014) 1 x Bathing platform maximum lifting capacity UPGRADED to 650kg 1 x Fresh water deck wash with outlets forward and aft & flybridge 1 x Fresh-water filler 1 x

IMCO navigation lights 1 x Remote controlled spotlight at bow 1 x Bow seat and sunbathing pad (new 2014) 1 x Escape hatch to foredeck from VIP Stateroom 1 x Stern garage, storage for water softener, water toys

1 x pair of pop up cleats on bathing platform

1 x Special extended Bimini top with 8x overhead DC lights (new 2015)

1 x Side mount stairway with brackets on port and starboard sides of hull in the moulding

1 x Hydraulic flybridge crane (400kg/880lbs lifting capacity). **Currently in storage.**

1 x All flybridge seating areas raised by 5mm above teak deck level in the moulding.

1 x Extended galley option.

1 x Black water tank capacity increased to 250 US gallons/950 liters in the moulding

1 x HiFi system upgraded to Bose 48 in saloon fed to 2x Bose 131 Marine speakers in aft cockpit, 8x Bose 131 Marine speakers on flybridge, and 2x Bose 251 removable speakers beside bow sunpad.

1 x Low-level side deck and flybridge lights to be blue LED

1 x Side mount stairway with brackets on port and starboard sides of hull

1 x Modified 108kg CQR anchor in lieu of standard 1 x Besenzoni passarelle 1 x Dive compressor

Mechanical & Electrical Equipment

Engines: 2 x CATERPILLAR C32 V12 Turbo charged

Engine hours: 400/3450 Hours as of February 10th, 2016, Warranty till Oct 2016

Gearbox: 2 x ZF2060V

Propulsion: Shafts (All running gear balanced 2016)

Generators: 2 x Kohler 27kva 60 Hz 240v single phase

Gen hours: Starboard: 600Hours, Port: 0 hrs, as of February 10th, 2016 (warranty til Nov 2016/Feb 2018)

Oil change system for engines, gearboxes and generators

24v and 12v DC electrical system, 240 V - 1 single phase

Electricity Dedicated inverter in engine room to run fridge in galley, wine cooler in saloon and fridge in crew mess AC and DC engine room lighting Electrical Isolation system

Shore power: Glendinning Cablemaster (extended cord to 150 feet) Dockside AC sockets -1 x 63 amp and 1 x 100 amp

Propellers: 5-blade NAB bronze propellers (spare props in storage)

Batteries: 2 x Main engine start: Lead Acid 200 Amp (new 2014) 1 x Service: Domestic Batteries 800 Amp (new 2014) 2 x 4 engine batteries 24v circuit (new 2014) 8 x domestic batteries 24v circuit (new 2014)

Generator start: 2 x Generator batteries 12v circuit (new 2014)

Chargers: 2 x 95amp battery chargers for 24v circuit (new 2015) 1 x 40amp battery charger for 12v circuit

Alternator: 1 x Alternator split charging system

Hydraulics: 1 x Hydraulic power steering

Stabilizers: 1 x Track Star Digital fin stabilizer system w/flybridge remote TRAC ZERO SPEED STABILIZER and MOTION (overhauled 2016)

Bow thruster: 1 x Hydraulic bow thrusters (30hp) 1 x Hydraulic stern thruster (30hp) (new accumulator tank and service)

Air

Conditioning: 3 x Marine Air chiller CRUISAIR 9000 btu (all new airhandlers)

Watermaker: 2 x HRO watermaker SFC 1400-2 (1400 US Gals/5300 liters per day) including commercial pre-filter, freshwater flush and oil/water separator. Watermakers stacked above each other and have ability to run fully independently (separate seacock etc.), but not simultaneously 1 x HRO UV filter option for watermakers UV filter for dockside water connection

Water pumps: 1 x Back up fresh water pump, plumbed in with diverter valve for immediate use if required (new 2015) 1 x Back up black water discharge pump

Fuel System: 1 x Diesel FuelMag conditioning system for engines FM1500 and generators FM500 Racor fuel filters for engines and generators in lieu of standard PTOs required off both gearboxes to provide simultaneous thrusting, hydraulics upgraded to accommodate. 1x Tool box All new fuel lines 2016 New exhaust risers and blankets 2015

Galley Equipment

1 x American style fridge/freezer 1 x Bosch 12 set dishwasher AC 1 x Electric multifunction oven - Bosch HBN 580650B GB 1 x Exhaust/extractor (new 2016) 1 x Hob in galley

Safety & Security Equipment

1 x Fire Yacht fire detection system w/ sensors throughout the vessel and monitoring beside the helm position (Lloyd's approved equipment) 1 x CCTV System: 3 x Cameras (aft deck/engine room viewed from flybridge & wheelhouse) 1 x Automatic bilge pump (in each watertight compartment) 1 x Automatic flood pump (in each watertight compartment) Automatic fire extinguisher with engine/generator and fan shutdown Manual bilge pump Sensors connected to fire detection system 1 x AC 240v fresh-water pump 1 x DC 24v backup fresh-water pump 1 x Hot water circulating pump 1 x Grey water tank with WAVE BRITE filtration system. Redundant sea fire system. Yacht built to MCA class certification standards.

Special Features

Complete spares kit for motor yacht.

Tender

Novurania DL60 #430DL with 60 hp Yamaha

Remarks

When a yacht is looked after at such a level that the annual management includes the replacement and rejuvenation of mechanics, electrics and fittings without any consideration for cost, then you have the ability to purchase a pre-owned yacht with the complete piece of mind that you would when a yacht is new. The moment you walk aboard 'It's Noon Somewhere' you are immediately put at ease, all of your senses will put you at a level of comfort you require when considering owning the best of the best on the market. With over US\$ 2 Million spent on preventive maintenance, warranties in place on mechanics, and every care taken to uphold perfect cruising ability from one of the most popular models built from the world class Sunseeker stable, 'Its Noon Somewhere' is a must see.

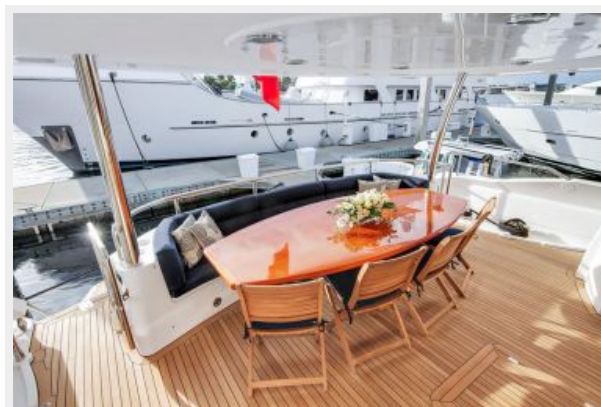
Исключения

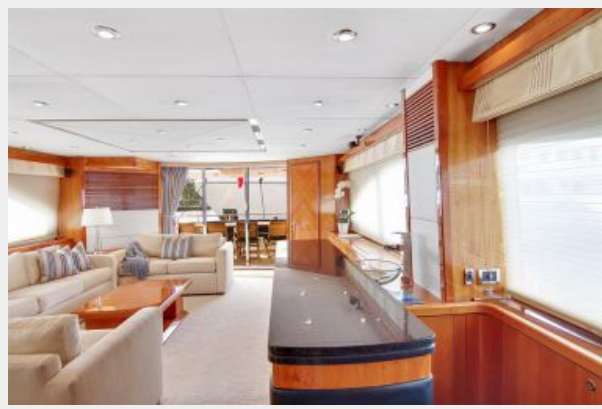
При продаже яхты исключаются личные вещи владельца.

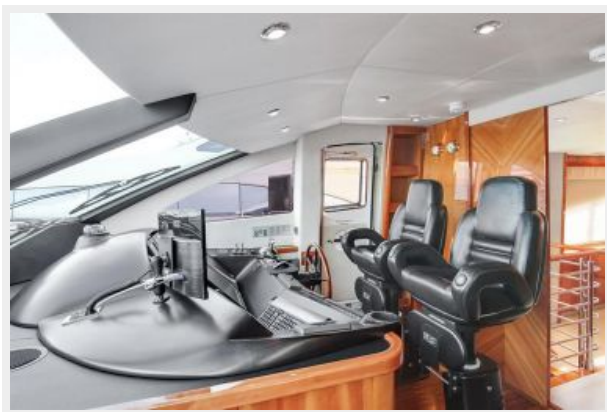
Отказ от ответственности

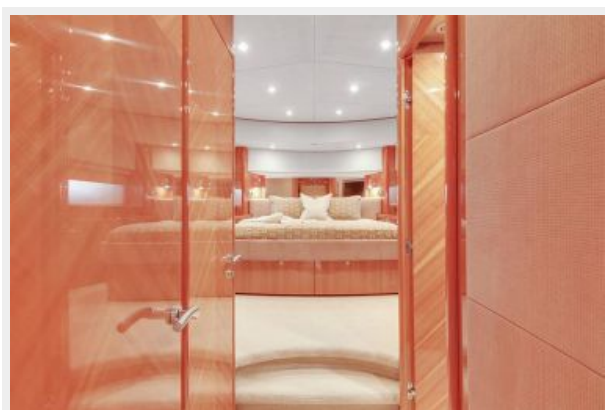
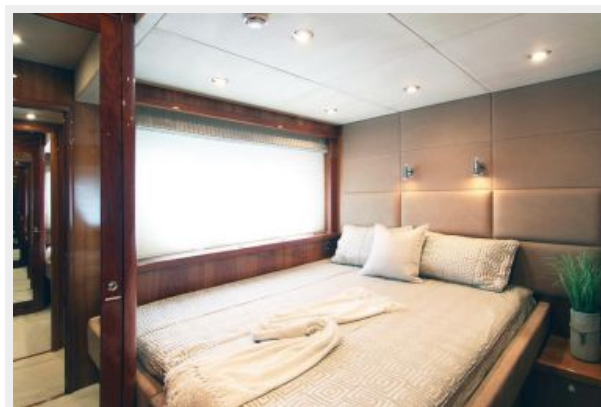
Компания предоставляет описание судна или яхты добросовестно, но не может гарантировать точность этой информации, а также не ручается за техническое состояние. Покупатель должен проинструктировать своих агентов или оценщиков исследовать представленную информацию более подробно, по собственному желанию. Продажа судна или яхты, изменение цены или снятие с продажи будет происходить без предварительного уведомления.

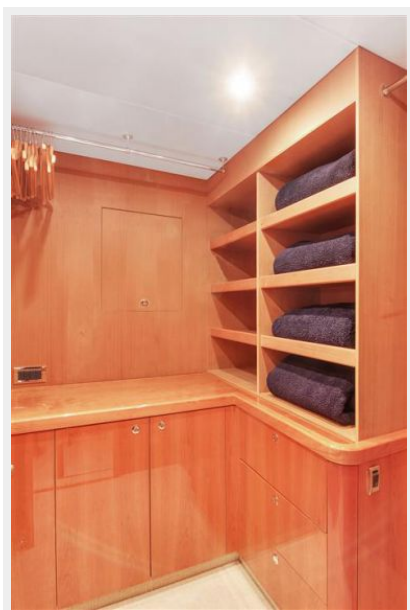
ФОТОГРАФИИ















КОНТАКТЫ

Андрей Шестаков (Andrey Shestakov) – ведущий яхтенный брокер отдела продаж яхт и судов компании Shestakov Yacht Sales Inc. Официальный представитель Shestakov Yacht Sales Inc. для русскоговорящих клиентов в центральном офисе компании в Майами/Форт Лодердейл/Флорида/США.

Контактная информация

Email: andrey@shestakovyachtsales.com

Web: shestakovyachtsales.com

Телефоны

Краснодарский край: **+7(918)465-66-44**

США, Майами, Флорида: **+1(954)274-4435**

Время работы

Понедельник – Суббота: **9:00 - 21:00**
EDT

Воскресенье: **Закрито**

Адрес



Harbour Towne Marina, 850 NE 3rd St,
STE 213, Dania, FL 33004