

WINDBORNE — FORMOSA



Судостроитель: FORMOSA

Год постройки: 1974

Модель: Крейсерская яхта

Цена: **ЦЕНА ЯХТЫ ПО ЗАПРОСУ**

Местонахождение: United States

Длина общая: 51' 0" (15.54m)

Макс. осадка: 6' 6" (1.98m)

Купить **WINDBORNE — FORMOSA** а также выбрать подходящую вам яхту из нашего каталога яхт вам поможет опытный яхтенный брокер Андрей Шестаков. На сегодняшний день компания **Shestakov Yacht Sales Inc.** имеет большое количество яхт в собственном списке продаж, а также тесно сотрудничает со всеми крупными яхтенными производителями по всему миру.

Для того чтобы купить яхту **WINDBORNE — FORMOSA** а также проконсультироваться по любому вопросу связанному с покупкой, продажей, чартером яхт позвоните по телефону **+7(918)465-66-44**.

ОГЛАВЛЕНИЕ

ОГЛАВЛЕНИЕ	2
ХАРАКТЕРИСТИКИ	3
Обзор	3
Основная информация	7
Размеры	7
Скорость, вместимость и масса	7
Размещение	7
Корпус и палуба	7
Информация о двигателе	8
ФОТОГРАФИИ	9
КОНТАКТЫ	14
Контактная информация	14
Телефоны	14
Время работы	14
Адрес	14

ХАРАКТЕРИСТИКИ

Обзор

The pictures tell a 1000 word story. This gorgeous yacht has been fully refit, restored and loved. No expense spared.

From a distance and close up, WINDBORNE is spectacular and an attention getter. The impeccable wood and brightwork finish shows true craftsmanship that anyone would appreciate.

The beautiful helm and wheel invite you to navigate WINDBORNE to faraway places. The decks are wide and easy to negotiate.

The interior is stunning and very inviting. The salon is wide and comfortable for entertaining friends or family with a galley that a pro chef would appreciate.

The forward salon is an entertainment center with a comfortable couch, large flatscreen TV, extra fridge. This salon is surrounded in beautiful carved woodwork.

Forward is another stateroom and large head. There is also very large storage area and workshop.

The master stateroom is amazing with it's large queen size berth with the classic windows in the stern.

Think of this yacht as a work of art that is a very capable, safe blue water cruiser.

- **A true Bluewater Vessel**
- **Exquisite Brightwork and Detail**
- **Complete Refit**
- **Luxurious interior**
- **Expertly Maintained**

- **Additional Specs, Equipment and Information: Dimensions LOA: 50 ft 10 in Beam: 14 ft 2 in LWL: 39 ft 7 in Maximum Draft: 6 ft 6 in Bridge Clearance: 62 ft 0 in Dry Weight: 46000 lbs Engines Engine 1: Engine Brand: Ford Lehman Engine Model: 2714E Engine Type: Inboard Engine/Fuel Type: Diesel Engine Hours: 880 Propeller: 3 blade propeller Drive Type: Direct Drive Engine Power: 120 HP Tanks Fresh Water Tanks: 3 Stainless steel (80 Gallons) Fuel Tanks: 4 Stainless steel (62 Gallons) Holding Tanks: 2 Fiberglass Accommodations Number of heads: 2 Electronics Navigation center GPS - Raymarine E 80 VHF - Raymarine 218 Plotter - Raymarine E80 Depthsounder - Raymarine Autopilot - Raymarine ST70 oversized Radar - 4 KW Raymarine TV set - 2/14 in Sharp, 1/25 in Sharp Cockpit speakers Compass - Ritchie Radio - Fusion stereo with remote Inside Equipment Washing machine - Separate Avanti**

washer/dryer Refrigerator - Gunert Bow thruster - Vetus Microwave oven Manual bilge pump Oven - Force 10 Battery charger - Xantrex 40 amp Electric head - 2 Air conditioning - 3 Cruiseair Electric bilge pump Hot water - 25 Gal Electrical Equipment Inverter - Promariner Generator - Norpro 8.2 KW Shore power inlet Outside Equipment/Extras Teak sidedecks Cockpit cushions Tender - West Marine 310 Teak cockpit Liferaft Outboard engine brackets Davits Electric windlass Covers Mainsail cover Bimini Top Genoa cover Lazyjacks Lazy bag Spray hood Cockpit cover

Power

- **Ford Lehman 120 HP 880 hrs Overhauled 2008**
- **3 blade bronze propellor**
- **New Stainless Steel Prop shaft 2015**
- **Engine Alarm system**
- **Racor oil filtration system**
- **Borg Warner Velvet Drive**
- **Fuel Tanks Polished 2016**
- **New Heat Exchanger 2015**
- **Balcor MC 612 Regulator**
- **Norpro 9Kw Generator 2006 Isuzu 3lb1 Engine**

Deck

- **Zodiak 6 Person Life Raft certified 2015**
- **Jack Lines**
- **2 ACR ResQLink EPIRB 2015**
- **5 West Marine PDF with Whistles, strobe lights and gas signal horns**
- **Captains and First Mates PDFs have EPIRBS**
- **Marriage Saver Headphone system**
- **75 LB Plow Primary Anchor**
- **200 ft 3/8 in chain**
- **25 Lb Danforth secondary**
- **Vetus Bow Thuster**
- **Plath Windlass**
- **Sunbrella Bimini very good condition**
- **Sunbrella cushions good condition**
- **Sunbrella helm cover**
- **Belaying Pins for each mast**
- **Profurl Jib furler**
- **Spreader lights**
- **Dual Bow anchor rollers**
- **Stainless dingy davits**
- **Radar reflector**
- **Sunbrella deck cover**
- **2 Lewmar 46 winches**
- **1 Andersen 52 st winch**
- **2 Andersen 46 st Winches**

- **1 Andersen 28 winch**
- **Jack lines and Tethers**
- **Two Liferings**
- **One Lifering in Sunbrella case**
- **Extra gas and diesel cans**
- **Sunbrella covers for all brightwork**

Electronics

- **1 West Marine Starting Battery 2015**
- **2 AGM 198 ahr and Bow Thruster 2015**
- **Promariner Pro Sport windlass battery charger**
- **Charles 5000 SP 40 amp Charger 2015**
- **Raymarine E80 Chartplotter 2006**
- **Charts for SE Fla, Bahamas**
- **Garmin GPS 785C 2016**
- **Icom 802 SSB with SP70 Tuner 2016**
- **Handheld Uniden MH5125 VHF**
- **Raymarine Radar**
- **Raymarine ST70 Autopilot**

Accommodations

- **Beautiful full teak interior**
- **Norpro 9 kw Generator**
- **Custom King bed in master stateroom**
- **Custom double bed in guest stateroom**
- **Custom twin bed in crew quarters**
- **Main Salon curtains**
- **Corian counter tops**
- **Teak and Holly sole**
- **West Marine compact toilet 2016**
- **Jabsco Main Salon toilet 2006**
- **3 MarineAir AC units 2012**
- **2 Sharp 14 in LCD TVs**
- **1 Toshiba 25in TV**
- **Avanti W1092F Clothes washer**
- **Avanti D-24 Clothes Dryer**
- **KoldFront Ice Maker 2015**
- **25 Gal Raritan water heater 2015**
- **Force 10 3 burner Stove/Oven 2014**
- **Grunert 120/12 v Fridge Freezer**
- **Panasonic Microwave**
- **Fusion MSIP 500cStereo with remote control Bluetooth**
- **LV jacks for phone and computer charging in Stateroom**
- **Daewoo 3CF ac fridge**
- **Magna Nesting SS Cookware set 2016**

Tender

- **West Marine 310 RIB**
- **Mercury 15 hp outboard**
- **25 Lb Mushroom anchor**
- **Side mount access Ladder**
- **Foot Pedal Inflation Pump**
- **Surface Mount Running Lights**
-

Sails

- **New Selden Main and Mizzen Masts and booms 2006**
- **Two Stage in boom one line reefing system**
- **Main good condition**
- **Aluminum Mizzen**
- **Mizzen sail good condition**
- **Furled jib good condition**
- **Aluminum whisker pole**
- **New Winches 2006**
- **Winchrite electric winch handle 2015**
- **New Standing Rigging 2006**
- **135 Genoa**
- **Wisker pole 2006**
- **Yankee jib**
- **Lazy Jack Folding System**
- **Sunbrella Sail Covers**
- **Winch Handle Pockets**
- **Full Pilothouse and mid deck sun cover.**

Extra Features

- **Set of 4 Teak folding deck chairs**
- **Teak folding deck table**
- **Teak gunnel folding access ladder**
- **1 1/4woven mooring lines**
- **Mooring line hooks**
- **Fishing gaff**
- **3 saltwater fishing poles and reels**
- **Side mounted fishing pole holders**
- **Inflatable 2 person kayak 2016**
- **Inflatable raft**
- **Watersport toys**
- **3 sets of fins and goggles**
- **Sail bags**
- **Forespeak storage room, maple hardwood bench with vise.**
- **Air compressor, power tools, mechanic tools, tool chest**

- \$5000 worth of SS supplies, plumbing, electrical, fasteners, emergency medical kit, cleaning products, etc.
- Auxillary electric sump pump

Основная информация

Тип судна: Крейсерская яхта

Подкатегория: Крейсерская яхта

Модельный год: 1974

Год постройки: 1974

Страна: United States

Размеры

Длина общая: 51' 0" (15.54m)

Длина по ватерлинии: 39' 7" (12.06m)

Макс. осадка: 6' 6" (1.98m)

Трапы: 62' 0" (18.90m)

Скорость, вместимость и масса

Водоизмещение: 46000 Pounds

Вместимость воды: 80 Gallons

Объем топливного бака: 62 Gallons

Размещение

Всего кают: 2

Всего ком. состава: 2

Корпус и палуба

Материал корпуса: Fiberglass

Отделка корпуса: Stainless Steel

Информация о двигателе

Двигатели: 1

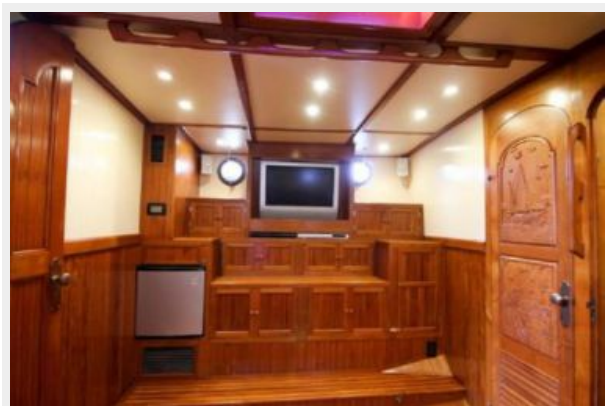
Производитель: Ford Lehman

Модель: 2714E

Тип двигателя: Inboard

Тип топлива: Diesel

ФОТОГРАФИИ











КОНТАКТЫ

Андрей Шестаков (Andrey Shestakov) – ведущий яхтенный брокер отдела продаж яхт и судов компании Shestakov Yacht Sales Inc. Официальный представитель Shestakov Yacht Sales Inc. для русскоговорящих клиентов в центральном офисе компании в Майами/Форт Лодердейл/Флорида/США.

Контактная информация

Email: andrey@shestakovyachtsales.com

Web: shestakovyachtsales.com

Телефоны

Краснодарский край: **+7(918)465-66-44**

США, Майами, Флорида: **+1(954)274-4435**

Время работы

Понедельник – Суббота: **9:00 - 21:00**
EDT

Воскресенье: **Закрито**

Адрес



Harbour Towne Marina, 850 NE 3rd St,
STE 213, Dania, FL 33004