

AEQUO ANIMO — HATTERAS



Судостроитель: HATTERAS

Год постройки: 2006

Модель: Катер для спортивной рыбалки

Цена: **ЦЕНА ЯХТЫ ПО ЗАПРОСУ**

Местонахождение: United States

Длина общая: 64' 0" (19.51m)

Ширина: 19' 6" (5.94m)

Макс. осадка: 4' 10" (1.47m)

Крейс. скорость: 28 Kts. (32 MPH)

Макс. скорость: 34 Kts. (39 MPH)

Купить **Aequo Animo — HATTERAS** а также выбрать подходящую вам яхту из нашего **каталога яхт** вам поможет опытный яхтенный брокер Андрей Шестаков. На сегодняшний день компания **Shestakov Yacht Sales Inc.** имеет большое количество яхт в **собственном списке продаж**, а также тесно сотрудничает со всеми крупными **яхтенными производителями** по всему миру.

Для того чтобы купить яхту **Aequo Animo — HATTERAS** а также проконсультироваться по любому вопросу связанному с покупкой, продажей, чартером яхт позвоните по телефону **+7(918)465-66-44**.

ОГЛАВЛЕНИЕ

ОГЛАВЛЕНИЕ	2
ХАРАКТЕРИСТИКИ	4
Обзор	4
Основная информация	5
Размеры	5
Скорость, вместимость и масса	5
Размещение	5
Корпус и палуба	5
Информация о двигателе	6
ПОДРОБНОЕ ОПИСАНИЕ	7
Vessel walkthrough	7
Main Salon	7
Galley/ Dinette	8
Lower Companionway/ Laundry	8
Master Stateroom (Full Beam)	8
Master Head	8
VIP Stateroom (Bow)	9
VIP Head	9
Guest Stateroom	9
Guest Head	9
Cockpit	9
Flybridge	10
Electronics & Navigation Equipment	10
Engine Room	11
Исключения	11
Отказ от ответственности	11
ФОТОГРАФИИ	12
КОНТАКТЫ	17

Контактная информация	17
Телефоны	17
Время работы	17
Адрес	17

ХАРАКТЕРИСТИКИ

Обзор

Come see the nicest 64 Hatteras ever built.

This popular 64 Hatteras model has been completely customized by new owners that have spared no expense in upgrading.

- **Twin CAT C-32 ACERTs 1800 HP installed 2008 w/ 266 hrs with Advantage Platinum Plus Warranty beginning April 2014, coverage period 48 Months/ 1200 Hours/0 Deduct**
- **Custom Pipewelders hardtop with T-MAST**
- **New KEP 15" Touchscreen LED Monitors flat screen displays**
- **New KVH TV M5 Satellite & New HD TV**
- **Airmar CA500B-NTSC Underwater Camera**
- **All batteries replaced 06/2014**
- **New Bow Thruster 06/2014**
- **New 6 Ocean LED Underwater Multi-Color with salon controller 06/2014**
- **Custom Hydraulic Outriggers**
- **Custom fiberglass swim platform with SS mounting and under mount pull out ladder 06/2014**
- **New Salon area A/C compressor 06/2014**

- **(2) New Fwd A/C units 03/2015 and all new circulating pumps**

- **Custom built storage for dive tanks 06/2014 (4) Dive Tanks**
- **Complete bottom job including sandblasting of running bottom gear, new cutless bearings and shafts seals and apply prop speed 06/2015**
- **Compound and wax entire hull 06/2015**
- **New nonskid throughout (bow, cockpit & flybridge) 06/2015**
- **New steering piston 06/2015**
- **New transom door gate raise to floor level 06/2015**
- **New rudder seals and bearings 06/2015**
- **New boot stripe painting and non-skid 06/2015**
- **Repaint hand rails port and re-seal stb sides windows 06/2015**
- **Service all seacocks and strainers 06/2015**
- **Sand all exterior teak 06/2015**
- **New Brownie's Marine Compressor Yacht Pro 45 yacht with 4 tank Manifold 06/2015**
- **Certified life raft- 8 person**
- **New spreader lights**
- **New eisenglass/ strataglass enclosure on flybridge**
- **Flybridge A/C**
- **New navigation computer & Odessey navigation by Nobeltech**

- Update Navigation software for Furuno chart NavNet
- Full salon & ensuite protection runners
- New headhunter primary and back up freshwater pumps and expansion tanks
- New saltwater washdown pump
- New fuel priming pumps

Основная информация

Тип судна: Катер для спортивной рыбалки

Модельный год: 2006

Год постройки: 2006

Страна: United States

Открытая палуба мостика: Да

Размеры

Длина общая: 64' 0" (19.51m)

Ширина: 19' 6" (5.94m)

Макс. осадка: 4' 10" (1.47m)

Скорость, вместимость и масса

Крейс. скорость: 28 Kts. (32 MPH)

Макс. скорость: 34 Kts. (39 MPH)

Водоизмещение: 110000 Pounds

Вместимость воды: 343 Gallons

Вместимость сточного бака: 105 Gallons **Объем топливного бака:** 1950 Gallons

Размещение

Всего кают: 3

Всего ком. состава: 3

Корпус и палуба

Материал корпуса: Fiberglass

Информация о двигателе

Двигатели: 2

Производитель: Caterpillar

Модель: C32 Acert

Тип двигателя: Inboard

Тип топлива: Diesel

ПОДРОБНОЕ ОПИСАНИЕ

Vessel walkthrough

Aequo Animo is a very customized convertible that is being offered by a current owner who has spared no expense to make this Hatteras perfect for himself . With her wide beam (19'6"), a shallow draft (4'10"), and impressive fuel capacity (1950 US GAL). The wide beam creates a generously sized flybridge with ample space for all your guests. Equipped with top of the line electronics in a pop up console with 4-sided enclosure with Air conditioning, large freezer and plenty of storage and seating, the 158FT flybridge is the place to be while running. Cockpit: The mezzanine offers plenty of upgrades - port seating, 10 cubic ft. freezer, 4 drawer tackle station, modular storage and refrigeration, Eskimo ice maker, fish box, fighting chair ,the cockpit has a teak sole and other features. The mezzanine and coaming boards are also covered with teak.Dive Compressor hook-up for automatic dive tank filling is located in cockpit. The salon is designed for relaxation and comfort. A custom U-shaped sofa to port provides enough space for you and your guests to lounge around and enjoy the New 42" HD LCD Samsung TV and fresh ice maker in salon. Plenty of storage is underneath. Fluted valances in high gloss cherry are both decorative and functional - they direct the flow of air throughout the space so that the temperature is easily maintained. The galley/dinette area is one step up from the salon and features a 4-burner ceramic cooktop, microwave/convection oven, dishwasher , (4) Subzero units refrigerators and (2) freezer and other amenities. This 64 has been upgraded with granite counters and backsplashes in the galley and dinette area and includes a reverse osmosis drinking system for pristine drinking water and ice and insta-hot water system as well. Sporting the desirable three staterooms, three head arrangement. The master is full beam with an entry foyer, extra-large hanging locker and king berth. Twin nightstands and dressers to port and starboard are finished in high gloss cherry and offer ample storage. The ensuite head features granite countertops with bowed cherry cabinets. All stateroom heads feature Headhunter Royal Flush neoclassic fresh water toilets. Guest accommodations are just as luxurious. Both guest staterooms feature high gloss cherry woodwork and cabinetry as well as unsuited heads and high gloss cherry cabinets. The VIP (bow) head also serves as the day head. The bow stateroom has a queen sized berth and the port stateroom has the desirable side by side twin berths with a nightstand in between.

Main Salon

Custom U-shaped lounge. Throw pillows Whisperwall headliner with recessed lights Custom cocktail table Carpeting Custom carpet runners. Entertainment center including 46"Samsung LED 1080P-240 SMART 3D HDTV and surround sound audio system Whirlpool icemaker Complete high gloss Cherry wood throughout Fluted wood valances with 2" wood blinds over tinted windows Air conditioning dispersed through

fluted wood valances, port and starboard Overhead Lighting Alarm system & global tracking security upgrades Overhead Speakers Electric transfer control panel Smoke Detector/ Carbon monoxide detector

Galley/ Dinette

UPGRADE - Granite countertops with integral stainless steel sink, backsplash and storage cabinets made of genuine cherry wood with high gloss UPGRADE - SubZero undercounter (4) refrigerator and (2) freezer drawer units KitchenAid four burner ceramic cooktop UPGRADE – Bosh Dishwasher KVH TracPhone and VHF remote station SHARP Microwave/convection oven covered by cabinet door Dinette with storage under seat and throw pillows UPGRADE - Granite dinette countertop Amtico strip flooring - teak with black walnut accents Very large storage area and electronics cabinet forward of galley, port and starboard pantry areas Fluted wood valances with 2" wood blinds Air conditioning dispersed through fluted valances, port and starboard Overhead Lighting Overhead Speakers Recording Video camera, Salon video, DVD and surround sound stereo.

Lower Companionway/ Laundry

Carpeting Custom - Carpet runners Steps to salon with storage underneath Whirlpool Washer/Dryer Flush panel doors with high gloss finish and door stop to master stateroom, guest staterooms and guest head

Master Stateroom (Full Beam)

Whisperwall panels Carpeting Custom carpet runners King-sized tapered berth with upholstered headboard and base Custom mattress throw pillows Twin dressers with drawers Nightstands with drawers 20" Sharp TV DC AM/FM stereo receiver with CD/DVD player and Pioneer six disc CD changer Cedar-lined walk in hanging locker with doors and automatic light Private master to head with royal flush freshwater toilet Air conditioning dispersed through fluted valances, port and starboard Overhead lighting Smoke detector/ Carbon monoxide monitor Ozone Generator

Master Head

Amtico strip flooring- teak & walnut accents Custom Granite countertops with solid surface backsplash, sidesplash and integral sink over storage cabinet made of genuine cherry wood Storage cabinet with mirror above sink Towel bar Stall shower with molded seat, single door and automatic enclosed sump pump Custom mirrored ceiling Overhead lighting 120 volt AC air freshener blower AC duplex outlet

VIP Stateroom (Bow)

Carpeting Queen-sized tapered berth with upholstered headboard and base, and cedar-lined storage underneath Custom mirror (forward bulkhead) Custom mattress throw pillows Nightstands with storage, port and starboard Overhead storage lockers, port and starboard SHARP 15" TV DC AM/FM stereo receiver with CD & DVD player Cedar-lined hanging lockers with automatic lights Screened overhead hatch with privacy cover Genuine cherry wood bulkheads with high cherry gloss DC low voltage lights under berth SMX AC controlled en suite Smoke detector/ Carbon monoxide monitor Overhead Lighting Overhead Speakers

VIP Head

Amtico strip flooring, teak with black walnut accents Countertops with solid surface backsplash, sidesplash and integral sink over storage cabinet made of genuine cherry wood with high gloss Upper storage cabinet with plexi-mirror Towel bar Stall shower with door, seat and automatic enclosed sump pump Linen storage Custom Plexi mirrored ceiling Screened overhead hatch with privacy cover Custom Wallcovering 120V AC air freshener blower Overhead Lighting AC duplex outlet

Guest Stateroom

Carpeting Queen-sized tapered berth with upholstered headboard and base, and cedar-lined storage underneath Custom mirror (forward bulkhead) Custom mattress throw pillows Nightstands with storage, port and starboard Overhead storage lockers, port and starboard SHARP 15" TV DC AM/FM stereo receiver with CD & DVD player Cedar-lined hanging lockers with automatic lights Screened overhead hatch with privacy cover Genuine cherry wood bulkheads with high cherry gloss DC low voltage lights under berth SMX AC controlled en suite Smoke detector/ Carbon monoxide monitor Overhead Lighting Overhead Speakers

Guest Head

Wood floor Countertops with solid surface backsplash, sidesplash and integral sink Upper storage cabinet with Plexi-mirror Towel bar Stall shower with door, seat and automatic enclosed sump pump Custom Plexi mirrored ceiling Custom Wallcovering Screened overhead hatch 120V AC air freshener blower AC and DC light fixtures AC duplex outlet

Cockpit

Teak cockpit Seating with cushions across upper mezzanine Custom BlueWater fighting chair Polished anodized aluminum ladder to flybridge with teak steps Custom Transom door Stern cleats and stainless steel hawse eyes, port and starboard Hydraulic outriggers Freshwater washdown, port Saltwater washdown, starboard Hubbell telephone/television intel port and starboard Handheld shower fresh water hot/cold in recessed locker, aft Two 50 amp shoreline retractable shore cords, PORT & STBD Shore water connections PORT and STBD Custom bait freezer, under mezzanine Custom Livewell in deck, starboard Two 62" fish boxes with macerator, flush in deck Automatic dive compressor hook-ups and pressure control Storage in steps to deckhouse with chill box in top step Storage in step to mezzanine with refrigerated box Custom Salon door cover with snaps DC overhead lights under flybridge overhang Overhead Video camera Overhead Cockpit Misters Telephone/CATV inlets Polished rod holders, flush mount, set of 4 Clarion stereo system control with JL Audio speakers Custom Tackle center with (4) drawers and bait tray option, starboard mezzanine Custom Eskimo Ice Maker Custom Teak sole, covering boards, coaming boards, mezzanine deck

Flybridge

Fiberglass deck Control station with all necessary switches Engine synchronization and trolling valve controls Compass Forward Pod console with custom Edson wheel Hydraulic power-assisted steering Custom Twin Stidd helm chairs, Flybridge Air conditioning Flybridge Misters Clarion AM/FM stereo receiver and CD player system, IPOD & USB Inputs JL Audio speakers U-shaped lounge removable cushions and storage underneath Aft facing seat to starboard side flybridge Freezer on bridge Additional storage areas beneath U-shaped seat and console New (4) Four-side enclosure Eight rail mounted rod holders Two D.C electrical panel under helm Video Camera facing forward bow Dual search light GARMIN GPS 19Xhvs nmea Antena Custom pipewelders hardtop, mast and lighting

Electronics & Navigation Equipment

Hatteras systems computer (Leviathan) with bridge and remote salon station Furuno Nav-Net radar/chart plotter- 40 mile radar (4) KEP 15" Touchscreen LED Monitors flat screen displays Big Bay Tower PC Pro 24 vdc window 7 pro intel & Nobeltec Odessey Software Simrad Autopilot AP26 Furuno FI-50 digital depth Furuno 6' open array antenna radar (125 Mile radar) (2) Two ICOM VHF IC-M604 Bow thruster control ACR 24 volt search light with remote control keypad + WIFI Caterpillar Engines monitor display KVH Tracphone Satellite KVH TV5 M5 Satellite Dish Video surveillance cameras including engine room

Engine Room

UPGRADE - Twin diesel CAT C-32 ACERT 1800 HP installed 2008 with 266 Hours with Advantage Platinum Plus Warranty started April 2 2014, coverage period 48 Months/ 1200 Hours/0 Deduct . ZF Transmissions 3055A/3:1 Twin Onan 27.5 Kw Generators 472 Hours/ 425 Hours Fiberglass stringers Freshwater engine cooling system Engine room blowers, port & starboard Triple Racor 1000 filters to each engine & fuel prime electric pumps Electric air compressor with air nose Fresh water fill hose for engines D.C Fuel transfer pumps x 3 & filters Eskimo ice machine Autopilot pump, steering pump Compressed air regulator , port aft Hydraulic steering reservoir with pressure gauge Three A/C raw water pumps includes back-up for A/C system Refrigeration raw water pump Holding tank discharger pump control panel High water alarm sensor , port and stbd forward Trim tab reservoir and control unit High water alarm, forward in alleyway, amidship and in lazarette (8) Electric/automatic Bilge Pumps, emergency bilge pump & bilge pump (High volume) Hydraulic steering gear (4) diesel fuel tanks with 1950 gallons total capacity Thru-Hull Fittings Bronze with seacocks bonded Promarine ProSport20 dual bank battery charger ChargerMaster 24/80-3 automatic battery charger FCI Water Maker & system carbon filter and UV sterilizer & controls 2nd FCI Watermaker control in salon Goldline setpoint temperature control Caterpillar electronic troll processor Engine room video camera Ranco Electronic Temperature Control AC lights Oil change pumps system reversible Mister system DC lights DC bilge blower Sea-fire FM-200 extinguishing system Air conditioning compressors and pumps Brownie Pro 45 dive compressor ; Automatic, nitrox compatible

Исключения

При продаже яхты исключаются личные вещи владельца.

Отказ от ответственности

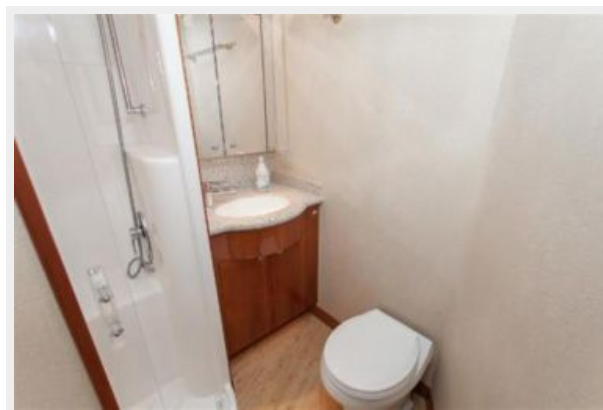
Компания предоставляет описание судна или яхты добросовестно, но не может гарантировать точность этой информации, а также не ручается за техническое состояние. Покупатель должен проинструктировать своих агентов или оценщиков исследовать представленную информацию более подробно, по собственному желанию. Продажа судна или яхты, изменение цены или снятие с продажи будет происходить без предварительного уведомления.

ФОТОГРАФИИ











КОНТАКТЫ

Андрей Шестаков (Andrey Shestakov) – ведущий яхтенный брокер отдела продаж яхт и судов компании Shestakov Yacht Sales Inc. Официальный представитель Shestakov Yacht Sales Inc. для русскоговорящих клиентов в центральном офисе компании в Майами/Форт Лодердейл/Флорида/США.

Контактная информация

Email: andrey@shestakovyachtsales.com

Web: shestakovyachtsales.com

Телефоны

Краснодарский край: **+7(918)465-66-44**

США, Майами, Флорида: **+1(954)274-4435**

Время работы

Понедельник – Суббота: **9:00 - 21:00**
EDT

Воскресенье: **Закрето**

Адрес



Harbour Towne Marina, 850 NE 3rd St,
STE 213, Dania, FL 33004