

ONO OCEAN — OCEAN YACHTS



Builder: [Ocean Yachts](#)

Year Built: 1994

Model: Sport Fisherman

Price: PRICE ON APPLICATION

Location: United States

LOA: 66' 0" (20.12m)

Beam: 17' 8" (5.38m)

Max Draft: 5' 6" (1.68m)

Cruise Speed: 27 Kts. (31 MPH)

Max Speed: 30 Kts. (35 MPH)

Our experienced yacht broker, Andrey Shestakov, will help you choose and buy a yacht that best suits your needs **ONO OCEAN — Ocean Yachts** from our catalogue. Presently, at Shestakov Yacht Sales Inc., we have a wide variety of yachts available on our sale's list. We also work in close contact with all the big yacht manufacturers from all over the world.

If you would like to buy a yacht **ONO OCEAN — Ocean Yachts** or would like help answering any questions concerning purchasing, selling or chartering a yacht, please call **+1(954)274-4435**

TABLE OF CONTENTS

TABLE OF CONTENTS	2
SPECIFICATIONS	4
Overview	4
Basic Information	4
Dimensions	4
Speed, Capacities and Weight	4
Accommodations	5
Hull and Deck Information	5
Engine Information	5
DETAILED INFORMATION	6
DESCRIPTION:	6
SALON:	6
DINETTE:	6
GALLEY:	6
MASTER STATEROOM:	7
STARBOARD STATEROOM:	7
STARBOARD GUEST HEAD:	7
VIP STATEROOM FORWARD:	7
VIP GUEST HEAD FORWARD:	7
PORT STATEROOM:	8
PORT GUEST HEAD:	8
COMPANIONWAY:	8
MASTER HEAD:	8
COCKPIT:	8
FLYBRIDGE:	9
DECK:	9
ELECTRONICS:	9
ENGINE ROOM and MECHANICAL:	10

CLOSING COMMENTS:	10
Exclusions	10
Disclaimer	10
PHOTOS	12
CONTACTS	22
Contact details	22
Telephones	22
Office hours	22
Address	22

SPECIFICATIONS

Overview

ONO OCEAN was purchase by her present owner in 2014, since that time he has made this 66' Ocean the most up to date and fit on the market today. Nearly \$500.000 has been spent in the last 18 months to bring her to an impressive condition. The very detailed Maintenance Log runs 6 pages and is available to those who are truly interested. The 66' Ocean was the Flagship of the Ocean line and even by todays standards is an impressive boat in size and appearance. ONO OCEAN is aggressively priced and is seriously for sale, see her at the PALM BEACH BOAT SHOW.

Basic Information

Category: Sport Fisherman

Model Year: 1994

Year Built: 1994

Refit Year: 2015

Refit Type: MAJOR

Country: United States

Vessel Top: Enclosed

Dimensions

LOA: 66' 0" (20.12m)

Beam: 17' 8" (5.38m)

Max Draft: 5' 6" (1.68m)

Speed, Capacities and Weight

Cruise Speed: 27 Kts. (31 MPH)

Cruise Speed RPM: 2200 Kts.

Max Speed: 30 Kts. (35 MPH)

Max Speed RPM: 2350 Kts.

Displacement: 88000 Pounds

Water Capacity: 300 Gallons

Holding Tank: 100 Gallons

Fuel Capacity: 7000 Gallons

Accommodations

Total Cabins: 4

Total Berths: 6

Total Heads: 4

Hull and Deck Information

Hull Material: Fiberglass

Hull Configuration: Modified V-Hull

Engine Information

Engines: 2

Manufacturer: MAN

Model: D2842LYE

Engine Type: Inboard

Fuel Type: Diesel

DETAILED INFORMATION

DESCRIPTION:

ONO OCEAN was purchase by her present owner in 2014, since that time he has made this 66' Ocean the most up to date and fit on the market today. Nearly \$500.000 has been spent in the last 18 months to bring her to an impressive condition. The very detailed Maintenance Log runs 6 pages and is available to those who are truly interested. The 66' Ocean was the Flagship of the Ocean line and even by todays standards is an impressive boat in size and appearance. ONO OCEAN is aggressively priced and is seriously for sale, see her at the MIAMI BOAT SHOW.

SALON:

- Large recovered [2015] L shaped storage with very ample storage below
- New Carpet, new Canvas runner,2015
- New Blinds 2015
- New window Tinting 2015
- New cabinet Veneer 2015
- Sanyo HDTV behind cabinet
- Sony Surround Sound,Sony Av,Sony DVD/CD player, PanasonicDVD recorder
- New SS Icemaker 2015
- New DTV Boxes
- Electrical panel rewired 2015

DINETTE:

- **Reupholstered Settee for seating for 6**
- **Teak and Holley floor**
- **Fixed Corian Dining Table**

GALLEY:

- Large modern Country Galley with Teak and Holly floor
- U- Shaped Corian counter top
- SS full size Kenmore side by side Refrigerator/Freezer with water and Ice Dispenser
- 4 burner Gaggenau stove top and separate Oven
- Sharpe Convection Micro Wave
- Kenmore Dishwasher and Trash Compactor
- Garbage disposal and instant Hotwater

MASTER STATEROOM:

- Full Beam Stateroom
- Full center Island Hollywood Queen Bed
- New Bed covers and Pillows 2015
- Settee to Starboard

New Carpeting 2015

- TV and complete entertainment system
- Hanging Locker and very ample drawer space
- New AC Unit 2015

STARBOARD STATEROOM:

- Upper and lower Berths
- New Bedspreads and Pillow covers 2015
- New Carpet 2015
- Private access to Head

STARBOARD GUEST HEAD:

- New Toilet and Hoses 2015
- New Floor 2015
- New Tile walls 2015
- Vanity with sink and Mirror
- Full enclosed Shower
- New AC Unit 2015

VIP STATEROOM FORWARD:

- Queen Bed
- New Bedding and Pillows 2015
- Satellite TV with DVD player
- New Carpet 2105
- Private AC controls
- Two large Closets and Dresser with Drawers
- Private Head with Shower with new Toilet and Hoses

VIP GUEST HEAD FORWARD:

- **New toilet and hoses 2015**
- **New Tile walls 2015**
- **Enclosed show stall**
- **Vanity with sink, Mirror and storage**

PORT STATEROOM:

- **Upper lower Berths**
- **New Bunk coverings and Pillows 2014**
- **New Carpet 2014**

PORT GUEST HEAD:

- **New Toilet and Hoses 2015**
- **Vanity with sink, Mirror and cabinet**
- **Stall shower**
- **Teak and Holly floor**

COMPANIONWAY:

- **Carpeted 2015**
- **Stacked Washer and Dryer**
- **Entrance to Starboard stateroom**
- **Entrance to Starboard guest Head.**

MASTER HEAD:

- **Vacu Flush Toilet 2015**
- **Large Stall Shower with bench seat**
- **Vanity with Decorator Sink**
- **New wall covering 2015**
- **Lighted Mirror with medicine cabinet**
- **Teak and Holly floor**

COCKPIT:

- **Bait prep Center, Tackle storage, Bait chill box and engine room access**
- **New Off Set Swivel Base 2014**
- **Cockpit recording Camera 2014**

- Cockpit Engine Controls
- Seven foot Fish box with cooling plates and Eskimo Ice Dump 2014
- Live bait well
- New Flexitech Teak Decking and covering boards 2015
- 2 50 Amp Glendinning Cable Masters
- 30 Gal Live Well
- Transom Door and Gate
- 6 Rod Holders
- Cockpit Awning 2014
- Tuna Tube Hookups with 2 new Pumps 2015
- Coaming Pads new 2015
- Tuna Tube Hook Ups
- Tuna Tube Hook ups
- Coaming Pads

FLYBRIDGE:

- Enclosed Air Conditioned Flybridge, new AC 2015
- 3 Pedestal Helm seats plus seating for 10
- 42' Sony TV 2015
- Refrigerator, Ice maker wet Bar
- Helm with full Electronics, engine controls and new Steering system 2015
- Window Tint 2015

DECK:

- Full Tuna Tower with Ladder
- 39' Triple Spreader Rupp Riggers and center Rigger
- Winslow Lift Raft 2014
- 5000# Hydraulic Davit reconditioned 2015
- AB 12' Tender , 30 HP Yamaha motor and Bimini Top 2015
- 7 Gold Rod Holders mounted on back of Bridge
- Bow Pulpit with IMTRA Windlass Chain and 1000 ft of Rode
- 3 Yeti Coolers, 105 Qrt and 2 50 Qrt
- Bow Thruster added 2015

ELECTRONICS:

- 2 Standard Horizon Quest X9X1500VHF Transceivers in Bridge. Standard Horizon Ram in Tower
- Radar, Raymarine 72 Mile LCD

- Chart Plotter, Raymarine E120
- Autopilot, Raymarine ST 8002, total recondition of steering system 2015
- Raymarine E120 Color Sounder
- Raytheon V8010 Color Echo Sounder
- Danforth Compass 2014
- Satellite Phone system 2015
- Cameras Flybridge new , engine room and Salon
- Sat TV

ENGINE ROOM and MECHANICAL:

- Two Man 1100 HP Engines, Model D2842LE402
- Port Engine Complete Rebuild 2015, 250 hrs
- Starboard Engine, rebuild 2014, approximately 1262 hours. Complete 1000 hour service 2015. Records available for both motors
- 2 Onan Generators, 1. Port 12.5Kw 1975 hours, all services are up to date 2014. 2. Starboard Generator 20KW 3800 hours and all services are up to date 2016, Records available for both
- Water Maker new 2014
- Eskimo Ice new 2014
- All mechanical and electrical systems replaced or serviced 2014-2015
- RECORDS ARE AVAILABLE FOR ALL WORK DONE 2014 TO PRESENT

CLOSING COMMENTS:

Ono Ocean has come as close to a total refit as possible to date. the list of items added and improved runs 6 pages and is very detailed. There is no room here to go over each, but to name a few, 10 new Batteries in 2015, fresh bottom paint 2016, New Rudder bearings and stuffing boxes 2016, Props serviced 2015, complete new holding Tank system and hoses 2015, new pumps etc.etc. Records are available to those that are seriously interested. She will be at the Miami Show and in Palm Beach after that, come take a look, you will be amazed at what you see. Owner wants her sold.

Exclusions

Owner's personal belongings.

Disclaimer

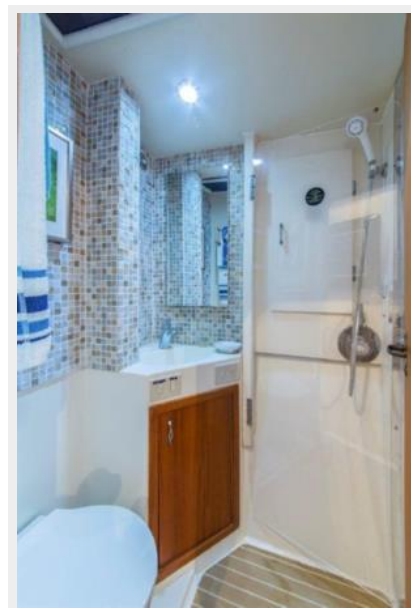
The Company offers the details of this vessel or yacht in good faith but cannot guarantee or warrant the accuracy of this information nor warrant the condition of the vessel. A buyer should

instruct his representatives, agents, or his surveyors, to investigate such details as the buyer desires validated. This vessel or yacht is offered subject to prior sale, price change, or withdrawal without notice.

PHOTOS





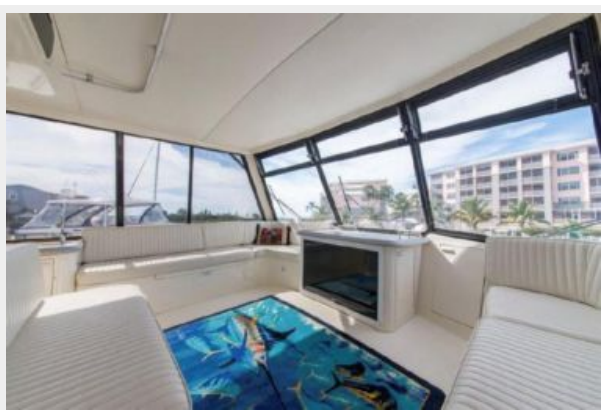




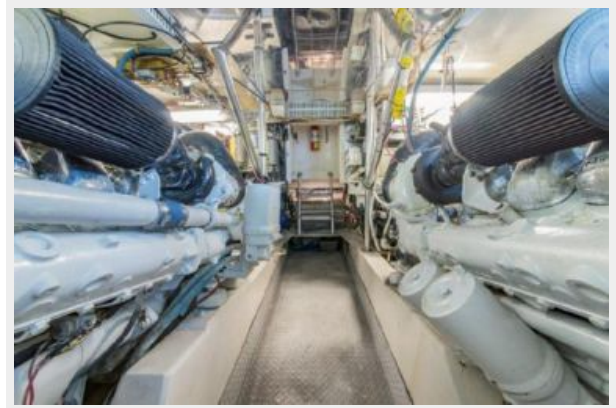












CONTACTS

Andrey Shestakov, leading yacht broker of the sales department of Shestakov Yacht Sales Inc. Shestakov Yacht Sales Inc., the official representative of the Miami/Fort Lauderdale FL headquarters.

Contact details

Email:
andrey@shestakovyachtsales.com

Web: shestakovyachtsales.com/en/

Telephones

USA: **+1(954)274-4435**

Office hours

Monday – Saturday: **9:00 - 21:00 EDT**

Sunday: **closed**

Address



Harbour Towne Marina, 850 NE 3rd St,
STE 213, Dania, FL 33004