

INDULGENCE — GRAND BANKS



Builder: GRAND BANKS

Year Built: 2009

Model: Motor Yacht

Price: PRICE ON APPLICATION

Location: United States

LOA: 59' 0" (17.98m)

Beam: 18' 0" (5.49m)

Max Draft: 5' 4" (1.63m)

Our experienced yacht broker, Andrey Shestakov, will help you choose and buy a yacht that best suits your needs **Indulgence — GRAND BANKS** from our catalogue. Presently, at Shestakov Yacht Sales Inc., we have a wide variety of yachts available on our sale's list. We also work in close contact with all the big yacht manufacturers from all over the world.

If you would like to buy a yacht **Indulgence — GRAND BANKS** or would like help answering any questions concerning purchasing, selling or chartering a yacht, please call **+1(954)274-4435**

TABLE OF CONTENTS

TABLE OF CONTENTS	2
SPECIFICATIONS	4
Overview	4
Basic Information	4
Dimensions	4
Speed, Capacities and Weight	4
Accommodations	5
Hull and Deck Information	5
Engine Information	5
DETAILED INFORMATION	6
Salon	6
Audio/Visual	6
Pilothouse/Lower Helm	6
Accommodations	6
Crew Quarters	8
Aft Deck	9
Flybridge	9
Dinghy	9
Deck & Hull	10
Electronics & Navigation	10
Mechanical Equipment	11
Electrical System	11
Additional Features	12
Manufacturer's Description	12
Exclusions	13
Disclaimer	13
PHOTOS	14
CONTACTS	46

Contact details	46
Telephones	46
Office hours	46
Address	46

SPECIFICATIONS

Overview

- - Caterpillar C-18 Diesels De-Rated 873 HP
 - Stabilizers, Bow & Stern Thrusters
 - 3 Staterooms, 3 Heads Forward
 - Crew Cabin and Head Aft
 - Pristine Condition

Basic Information

Category: Motor Yacht

Sub Category: Pilothouse

Model Year: 2009

Year Built: 2009

Country: United States

Fly Bridge: Yes

Dimensions

LOA: 59' 0" (17.98m)

LWL: 55' 4" (16.87m)

LOD: 58' 7" (17.86m)

Beam: 18' 0" (5.49m)

Max Draft: 5' 4" (1.63m)

MFG Length: 61' 7" (18.77m)

Speed, Capacities and Weight

Displacement: 90000 Pounds

Water Capacity: 385 Gallons

Holding Tank: 110 Gallons

Fuel Capacity: 1400 Gallons

Accommodations

Total Cabins: 3

Total Berths: 6

Sleeps: 6

Total Heads: 4

Crew Cabin: 1

Crew Berths: 2

Crew Sleeps: 2

Crew Heads: 1

Hull and Deck Information

Hull Material: Fiberglass

Engine Information

Engines: 2

Manufacturer: Caterpillar

Model: C-18

Engine Type: Inboard

Fuel Type: Diesel

DETAILED INFORMATION

Salon

- Single door entry from Aft Deck to Salon
- Curved upholstered sofa to port with cocktail table
- 2 recliner chairs opposite with TV/entertainment center cabinetry in between
- Custom fabrics for sofa, chairs, pillows, wall coverings, & draperies
- Built-in bookshelves, port & starboard
- Oceanaire blinds on large windows
- MarineAir A/C controls; vents in soffitts
- Overhead "grab bar" for steadying in rough seas

Audio/Visual

- Bose Lifestyle Media Center with Bose Lifestyle powered speaker system (Salon) and video enhancer
- TV
- Sony AM/FM/CD players with overhead speakers in Master, VIP and Guest cabins
- DVD player

Pilothouse/Lower Helm

- Forward and up two steps from the Galley
- Matching Stidd Admiral low back helm chairs with deluxe chrome package
- Double hinged breaker panel
- Port & starboard entry doors from side decks
- Oceanaire blinds on 3 windows

Accommodations

Lower companionway is 8 steps down from Main Deck with access to accommodations and bilge. Opening ports below deck have teak surrounds.

FORWARD VIP:

- Walk-around center-line queen bed
- Upholstered blue fabric headboard
- Blue & gold bedspread & pillows
- Custom fabrics for soft goods, wall coverings, & draperies
- Reading lamps

- Storage compartments port & starboard
- Port lights port & starboard
- Cedar-lined hanging closets port & starboard
- Teak & holly floor
- 2 large storage drawers below bed
- 2 overhead hatches with black-out screens
- Overhead lighting
- Sony Bravia flat screen TV
- Sony radio
- MarineAir A/C control
- Bilge access

VIP GUEST HEAD:

- Located to port of VIP
- Granite countertop
- Sink
- Large medicine/storage cabinet
- Dometic Sealand VacuFlush head
- Stall shower
- Mirror
- Towel bars
- Lighting
- Bilge access

MID-GUEST CABIN:

- 2 single berths with storage drawers beneath
- Blue & gold bedspreads & pillows
- Night stand with mirror between berths
- Beige fabric wall covering
- Custom fabrics for soft goods, wall coverings, & draperies
- Reading lights
- 2 port lights
- Cedar-lined hanging locker
- Teak & holly floor
- Overhead lights
- Mirror
- Sony radio
- MarineAir A/C control

MID-GUEST CABIN/DAY HEAD:

- Granite countertop
- Sink

- Dometic Sealand VacuFlush head
- Splash shower
- Mirror
- Lights
- Asko stacked clothes washer & dryer

MASTER STATEROOM:

- Located amidships
- Island queen berth with arched upholstered headboard in blue fabric
- Blue & gold bedspread & pillows
- Beige fabric wall covering
- Custom fabrics for soft goods, wall coverings, & draperies
- Storage drawers below
- Desk and headboard modifications
- Cedar-lined hanging lockers, port & starboard
- Drawer & cabinet storage, port & starboard
- Reading lamps
- MarineAir A/C control
- Sony Bravia flat screen TV
- 2 port lights, port
- 1 port light, starboard
- Mirror
- Teak & holly floor
- Overhead lighting
- Bilge access

MASTER HEAD:

- Located to starboard of the Master Stateroom
- Teak veneer
- Granite countertop
- Sink
- Dometic Sealand VacuFlush head
- Large stall shower with built-in accessory cubbies
- Mirror
- Lights
- Teak & holly flooring
- Storage lockers
- Towel bars
- Bilge access

Crew Quarters

- Access to crew quarters via hatch in the Aft Deck
- Access to crew quarters through door to Engine Room
- Separate crew quarters aft with single upper berth over double lower berth
- Custom fabrics for spreads & pillows, wall coverings, & draperies
- Sink, shower, and Dometic Sealand VacuFlush head

Aft Deck

- Teak deck
- Aft deck tables
- Seating with cushions
- Aft deck cover
- Shower
- Curved staircase to port to access Flybridge
- Entry door to Main Deck Salon
- Built-in storage, starboard
- Gates to Transom port & starboard
- Curved stairways port & starboard from swim platform to Aft Deck
- Access to walk-around side decks
- Swim ladder

Flybridge

- 2 Stidd Admiral low back helm chairs with deluxe chrome package
- "Jump seat" to port
- Ample guest seating port & starboard
- Teak tables port & starboard
- Wet bar with sink and fridge
- 14' Nautica RIB aft
- Aritex A-450 24V davit, 450 Kg capacity, with handheld remote

Dinghy

- 14' Nautica RIB14 Deluxe
- 50 HP Yamaha 4-stroke outboard engine
- White hull with grey tubing accents and blue trim stripe
- Cushions
- White powder-coated rails
- EC-1 Euro console starboard
- Step
- Bow with fold-down cleat

- Pair of tow eyes
- White chocks
- 3-point lift harness
- Stainless steel tie-down kit (1 bow; 2 stern)

Deck & Hull

- Custom radar arch/mast to accommodate owner's equipment
- Kahlenberg dual trumpet airhorns, compressor motor
- Lofrans Falkon windlass
- Diesel fills port & starboard for fuel tanks
- Dockside water at transom and bow
- Formica on hull ceilings around opening ports
- Diesel fills port & starboard for fuel tanks
- Dockside water at transom (and bow)
- 2 hatches on bow
- Liferaft in canister on bow
- Stainless steel bow pulpit
- Teak cap rails

Electronics & Navigation

- Navigation Center with two (2) Raymarine E-120 units, Pilothouse and Flybridge
- Raymarine ST6002 Plus with ST8002 display, 2nd display
- Raymarine STV45 dome
- Raymarine 45STV & two (2) DSS receivers (RF/12v)
- Raymarine radar antenna 12kW SHD with 4' array
- 3 Raymarine ST70 color multi-displays & depth pod
- Radar
- Chart plotter
- Navionics Platinum Plus chart card
- Raymarine
- Speed/depth
- Raymarine wind & depth
- Raymarine CAM100 IR cameras in engine room and on aft deck
- Simrad autopilot
- Raymarine wireless autopilot remote
- Ritchie Powerdamp Compass
- GPS
- E.P.I.R.B.
- 2 ICOM IC M604 VHF radios with remote mic version
- ICOM Command Mic III (Lower Helm to Flyridge intercom)

- 2 Comrod 8' VHF antenna & 4-way stainless steel mounts
- NewMar 60/40 hailer/fog horn for ICOM M604
- Twin Disc electronic controls
- Sea star hydraulic steering
- Windlass control
- Grey water and waste tank monitors
- Fireboy fire suppression system
- Fuel and water monitoring system
- Remote control for engines and thruster
- 2 stainless steel SmartController mounts
- 2 Seaview satellite antenna mounts
- Raymarine high speed hub
- Raymarine SR 100
- Jensen stereo with JL Audio speakers (Flybridge stereo)

Mechanical Equipment

- Twin Caterpillar C-18 diesel engines, de-rated 873 HP
- Engine hours as of January, 2016: Port: 391 Starboard: 388
- Caterpillar MPD monitoring system, Lower Helm & Flybridge
- Twin Disc transmissions, 2.52:1 gear ratio
- Twin Disc engine control system
- ZF Faster Propulsion system with 4-blade propellers
- VDO rudder indicator
- Racor fuel filters
- Naiad 254 24V stabilizers, Datum control
- Side Power stern thruster
- Side Power bow thruster
- Twin Disc thruster control box
- Rule 2000-GPH/Jabsco electric bilge pump
- Whale Gusher hand bilge pump
- Dometic Sealand marine toilets
- MarineAir air conditioning throughout vessel including master head
- Heating
- Sea star hydraulic steering
- Seagull IV water purification system
- Oil dipsticks and filters accessible on centerline
- Centroid Computank fuel & water tank level monitors
- DC fresh water pump
- Seaward 20-gallon fresh water heater

Electrical System

- 21.5 kW Onan generator with 480.6 hours (January 2016)
- Lifeline generator battery
- Dual Racors in generator with vacuum gauge
- Centek exhaust/water separators
- Lifeline engine and service batteries
- 12V and 24V Master battery chargers
- BEP Marine voltage sensitive relay module
- Xantrex Statpower Prowatt 800 DC-AC converter
- Newmar 32-12-50 DC-DC converter
- C Power ISO-boost 50 transformer
- 50-amp shore power inlet aft, with Cablemaster
- Shore power inlet at the bow
- Sea-Fire Marine carbon monoxide detector
- Fireboy engine shutdown system
- Fireboy fire extinguisher

Additional Features

- Fiberglass hard top with lighting
- Stainless steel covers for all opening ports
- Sunbrella canvas covers in "toast" for:
 - Settee
 - 2 foredeck seats
 - Console
 - 2 flybridge bench seats
 - 4 Stidd chairs, fitted with zippers in back
 - Windshield
 - Transom seat
 - 4 teak tables
 - Teak rails
 - Backdrop from flybridge overhead to behind aft seat

Manufacturer's Description

Performance and luxury, form and function come together in perfect harmony aboard the 59 Aleutian RP. With a modified deep-V hull and power options up to twin 1,000 hp diesels, the 59 RP cruises to 25 knots and beyond without ever sacrificing steady, quiet comfort. Pilot from the lower helm and enjoy sweeping visibility, or from the flybridge, where ample seating and panoramic views create an irresistible setting for your family and friends. Inside and out, the 59 RP impresses with its timeless style, intelligent design, and luxurious amenities. Designed in collaboration with renowned naval architects Sparkman and Stephens, and packed stem to stern with thoughtfully appointed features, the 59 RP represents the Grand Banks cruising experience

at its finest.

Exclusions

Owner's personal belongings.

Disclaimer

The Company offers the details of this vessel or yacht in good faith but cannot guarantee or warrant the accuracy of this information nor warrant the condition of the vessel. A buyer should instruct his representatives, agents, or his surveyors, to investigate such details as the buyer desires validated. This vessel or yacht is offered subject to prior sale, price change, or withdrawal without notice.

PHOTOS







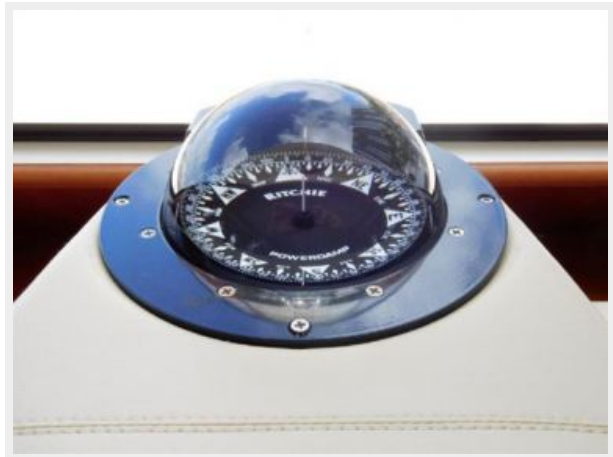










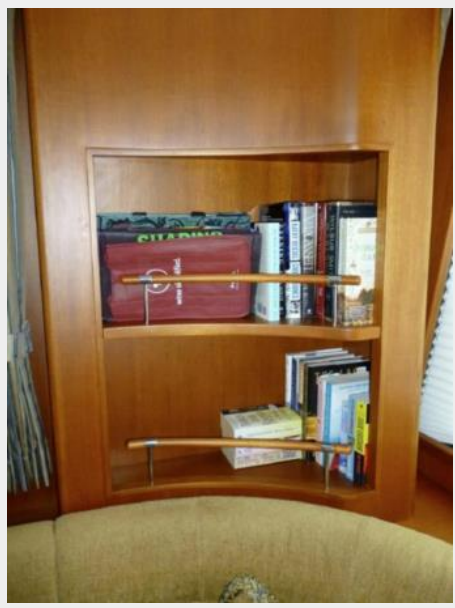


















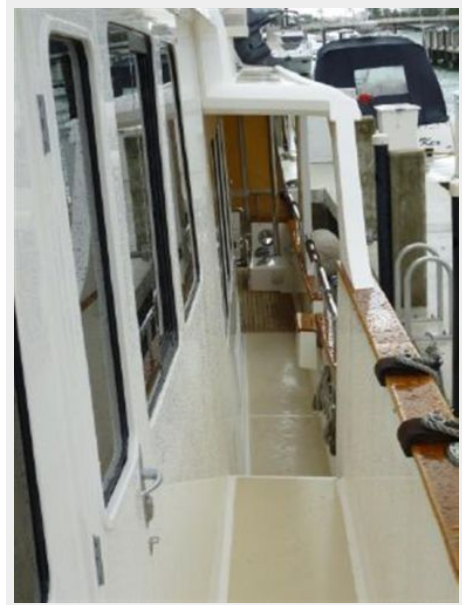




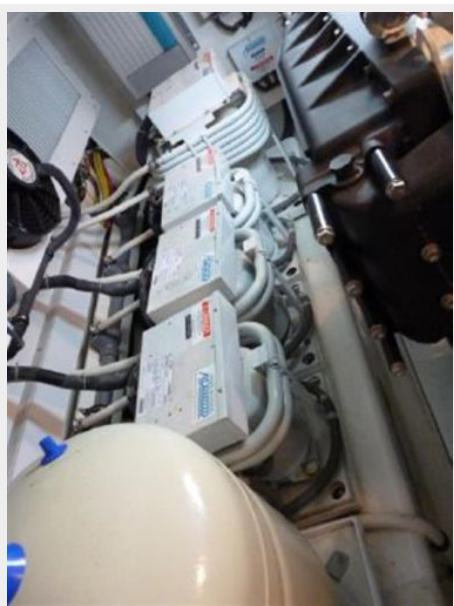
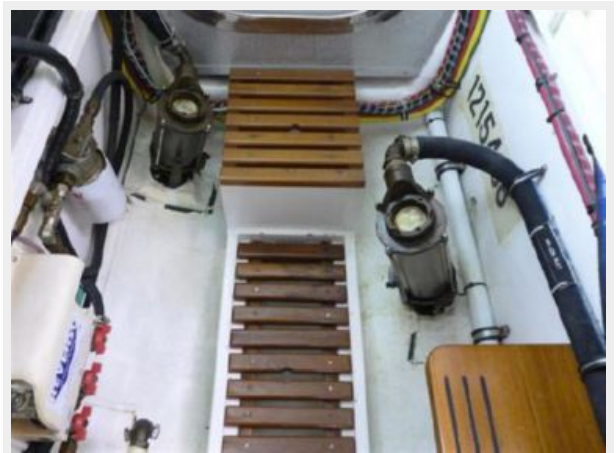


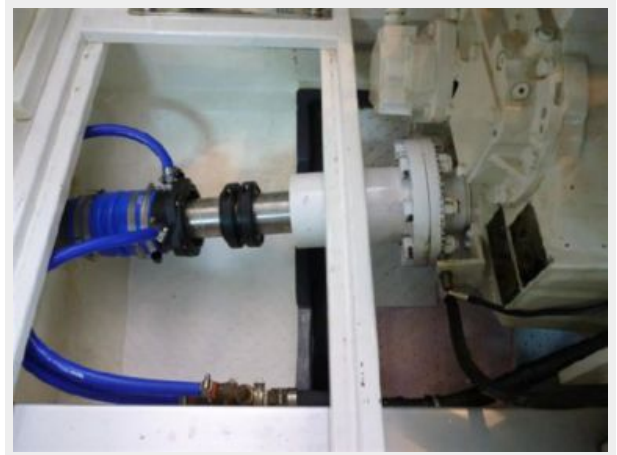




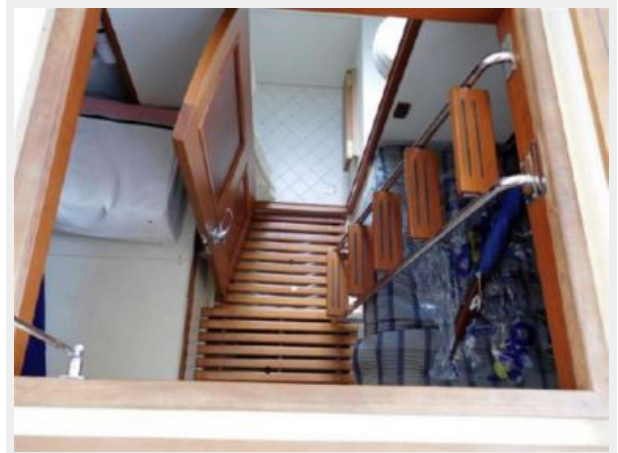






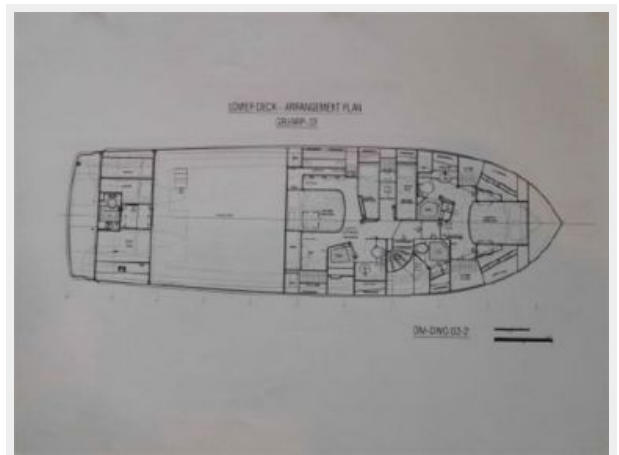
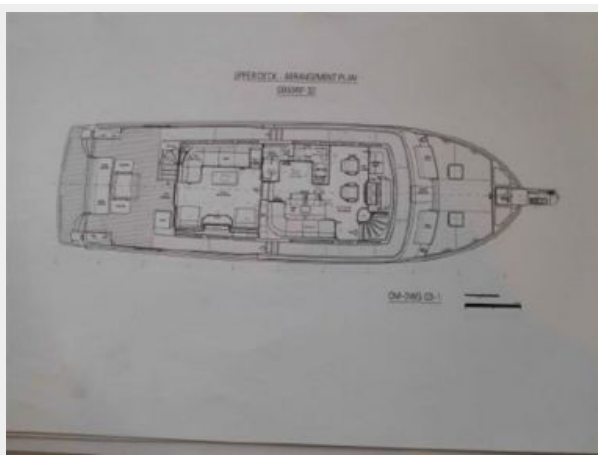
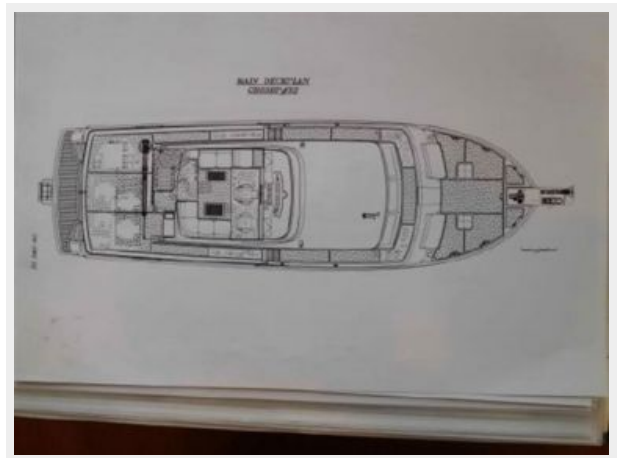














CONTACTS

Andrey Shestakov, leading yacht broker of the sales department of Shestakov Yacht Sales Inc. Shestakov Yacht Sales Inc., the official representative of the Miami/Fort Lauderdale FL headquarters.

Contact details

Email: andrey@shestakovyachtsales.com

Web: shestakovyachtsales.com/en/

Telephones

USA: +1(954)274-4435

Office hours

Monday – Saturday: **9:00 - 21:00** EDT

Sunday: **closed**

Address



Harbour Towne Marina, 850 NE 3rd St,
STE 213, Dania, FL 33004