

KAYTOO — AMERICAN PACIFIC BOATWORKS



Судостроитель:

[American Pacific Boatworks](#)

Год постройки: 2014

Модель: Моторная яхта

Цена: ЦЕНА ЯХТЫ ПО ЗАПРОСУ

Местонахождение: United States

Длина общая: 100' 3" (30.56m)

Ширина: 21' 7" (6.58m)

Макс. осадка: 5' 11" (1.80m)

Крейс. скорость: 13 Kts. (15 MPH)

Макс. скорость: 17 Kts. (20 MPH)

Купить **KAYTOO — American Pacific Boatworks** а также выбрать подходящую вам яхту из нашего каталога яхт вам поможет опытный яхтенный брокер Андрей Шестаков. На сегодняшний день компания **Shestakov Yacht Sales Inc.** имеет большое количество яхт в собственном списке продаж, а также тесно сотрудничает со всеми крупными яхтенными производителями по всему миру.

Для того чтобы купить яхту **KAYTOO — American Pacific Boatworks** а также проконсультироваться по любому вопросу связанному с покупкой, продажей, чартером яхт позвоните по телефону **+7(918)465-66-44**.

ОГЛАВЛЕНИЕ

ОГЛАВЛЕНИЕ	2
ХАРАКТЕРИСТИКИ	5
Обзор	5
Основная информация	5
Размеры	5
Скорость, вместимость и масса	5
Размещение	6
Корпус и палуба	6
Информация о двигателе	6
ПОДРОБНОЕ ОПИСАНИЕ	7
Walkthrough	7
Hull Design and Construction	8
Main Engine Propulsion and Steering System	8
Engine Room and Bilges	8
Superstructure and Deck	9
Equipment	9
Electrical	10
Boat Deck	11
Sky Bridge	11
Main Deck Exterior	11
Aft Deck	12
Owner's Stateroom and Head	12
Dining Lounge	12
Galley	13
Day Head	13
Salon	13
Pantry	14
Forward Stateroom and Head	14

Port Guest Stateroom and Head	14
Laundry / Tech Room	15
VIP Stateroom and Head	15
Captains Cabin and Head	15
Crew Cabin and Head	15
Aft Mess and Crew Area	16
Wheel House	16
Main Deck Dining Lounge	16
Swim Platform and Cockpit	17
Wheel House Interior	17
Tech Room	17
Interior Design	18
Broker Comments	18
Исключения	18
Отказ от ответственности	18
ФОТОГРАФИИ	19
Salon	19
Salon	19
Salon	19
Salon	19
Game Table	19
Dining Lounge	19
Galley	20
Galley	20
Galley	20
Captain's Quarters	20
Crew Hallway/Laundry	20
Crew Mess	20
Crew Stateroom	21

Forward King Stateroom	21
Hallway	21
Sky Master	21
Sky Master Head	21
Forward V-Berth Stateroom	21
Forward V-Berth Stateroom	22
Midships King Stateroom	22
Midships King Stateroom	22
Midships King Stateroom	22
Midships King Stateroom Head	22
Wheelhouse	22
Owner's Deck	23
Owner's Deck	23
Bahamas Cockpit	23
Aft Deck	23
Bow	23
Bow	23
Sky Bridge	24
General Arrangement	24
General Arrangement	24
КОНТАКТЫ	25
Контактная информация	25
Телефоны	25
Время работы	25
Адрес	25

ХАРАКТЕРИСТИКИ

Обзор

KAYTOO is in a class of its own when it comes to innovative layout and comfortability! This 100' Bahama Sky Master offers accommodations for eight guests in a three king, one queen stateroom layout. The sky master creates an extraordinarily private experience for the owner. Located aft of the pilothouse, the master stateroom has an exterior owners deck, which is an experience often only found on much larger vessels. The crew friendly layout along with the sky master make KAYTOO perfect for the owner that prefers crew or could easily be run by a yachting family. Entertaining is sure to be a success on board with the nicely outfitted Bahamas style cockpit, forward facing bow dining, and the sky bridge with fore and aft facing seating. If you are looking for 100' yacht with that something extra KAYTOO will be sure to impress.

Основная информация

Тип судна: Моторная яхта

Модельный год: 2015

Год постройки: 2014

Страна: United States

Размеры

Длина общая: 100' 3" (30.56m)

Ширина: 21' 7" (6.58m)

Макс. осадка: 5' 11" (1.80m)

Скорость, вместимость и масса

Крейс. скорость: 13 Kts. (15 MPH)

Дальность на крейсерской скорости:
1800

Макс. скорость: 17 Kts. (20 MPH)

Чистый вес: 188 Pounds

Вместимость воды: 900 Gallons

Вместимость сточного бака: 290 Gallons

Объем топливного бака: 4000 Gallons

Размещение

Всего кают: 4

Спальные места: 9

Всего ком. состава: 7

Каюта капитана: Да

Койки экипажа: 2

Корпус и палуба

Материал корпуса: Fiberglass

Дизайнер экстерьера: Scott Robinson

Дизайнер интерьера: Paragon Design
Team

Информация о двигателе

Двигатели: 2

Производитель: MAN

Модель: V12

Тип двигателя: Inboard

Тип топлива: Diesel

ПОДРОБНОЕ ОПИСАНИЕ

Walkthrough

Entering from the swim step, KAYTOO features a fantastic Bahamas style beach club cockpit with aft facing seating and a wet bar, a perfect set up for swimming, diving and entertaining alike. KAYTOO is set up with the support ship mentality, it has a 300-gal gasoline tank for the tender and toys along with an ice chipper for the fresh catch and plenty of rod holders. Moving forward up a few stairs you enter the spacious al fresco dining area complete with a large TV on a lift. The overheads are adorned with beautiful teak accents. Through a Freeman weather tight door forward you enter the salon. The salon boasts 7 ½ foot soaring ceilings complemented by electric window treatments and beautiful hard wood floors. Aft to starboard you will find a well-appointed wet bar. Along the port side is a stylish and comfortable sofa. Forward to port is the day head and to starboard is a game table just forward of a large TV on a lift. A doorway separates the nicely outfitted galley to port with a plenty of Sub-Zero refrigeration and Wolf gas cook-top with electric oven. The galleys well thought out design features an exterior door leading directly on to the port exterior deck for ease of provisioning and the removal of trash. Forward looking aft is a breakfast bar stools. Up a step moving forward you enter the formal dining room that is sure to impress. This a wonderful gathering spot with ample seating and world class views are provided by the 180 degrees of expansive windows. Up a staircase to starboard, you will find the pilot house and the sky master stateroom. Forward you will find the spacious pilot house that is nicely outfitted with triple reclining lounge helm chairs. The helm is outfitted with Garmin electronics. Aft you will find the sky master stateroom with his and her heads and an island king berth with ample storage underneath. Just outside aft of the sky master is the private owners deck offering a spectacular spot to relax and enjoy the environment. This deck is equipped with a large 2200 lb. davit to accommodate a large tender. Accessed from a stairway on the private owner's deck, the skybridge provides an amazing area to take in the scenery. The skybridge offers both forward and aft facing seating and features a remote navigation station. This area is sure to impress. The bow is accessed from the wide walk around side decks from the aft or the pilot house doors. On the foredeck there is a booth seating area for six that can be converted to a large sun pad. Just aft of the seating are two large storage lockers for the lines, fenders and deck gear. Three guest cabins are accessed from the dining room via a stair case to starboard, in the guest foyer to port is a fully equipped laundry room. All three cabins feature en-suite heads with showers. The v-berth features a queen berth with an optional Pullman berth. The port guest cabin features a king berth. Aft you will find the second master or VIP featuring a centerline king bed, large closet and an expansive head with twin sinks. This room is filled with natural light provided from the large hull windows. The crew quarters are accessed either from the hatch in the cockpit or the watertight door on the port side of the deck house. On the starboard side of the crew quarters is the captain's cabin with queen berth and en-suite head. To port is the crew cabin with twin bunks and en-suite head. The well-equipped crew mess is forward and a laundry center with two full sets of washers and dryers along with access to the engine room.

Hull Design and Construction

- Full planing hull, 13.5 degree deadrise at transom, generous flair at bow sections, integral swim platform
- One piece hull, combining hand lay up FRP and vacuum bag utilizing Bi-directional, and Uni-directional materials
- Solid FRP below the water line with (4) layers of Vinylester resin laminates for maximum osmosis protection
- “Interlux” “Gel-shield” is applied to add osmosis protection during build time and after
- Full length hull girders of foam core and Bi & Uni-directional materials
- Exterior hull finish in high gloss white Cook gel coat with Vinylester skin coats below water line
- Smooth finish on all bilge areas
- Engine girders are epoxy laminated vertical grain plys

Main Engine Propulsion and Steering System

- Twin MAN V-12-1550 hp diesel engines with ZF #2050a electronic marine reduction gears using a sea torque enclosed shaft system and torsional coupling vibration dampening system
- Engine Hours: Port 661 hours, Starboard 660 hours
- Engines mounted on vibration dampening mounts, engine installation shall be approved by the engine manufacturer, during installation and at sea trials
- American built “Marine Exhaust Systems” #316 stainless steel epoxy coated exhaust risers, with S.S. Flex bellows connecting to custom spray nozzles and FRP super60 silencers, underwater exhaust, and 6” bypass exhaust.
- Power train & exhaust systems have been designed for smoothest and most quiet results possible
- Dual Racor 75/1000 fuel filters/water separators for each engine
- R.C.I. Fuel purifiers (RCM 800) for each engine installed in line before Racors with water sensor alarms
- Bronze “V” struts and “I” struts
- “Tides” dripless rudder shafts
- Glendenning: Model 2003, electronic engine controls at Wheel House - center helm, port and stbd flybridge, remote control plugins at aft deck, stbd bow trunk and dining lounge
- Dualhydraulic power assisted steering system
- Two 4” dia. Posts S.S. Foil section, streamlined rudders
- Engine room start/stop panels with gauges
- Visual and audio alarms for engine systems at wheelhouse
- Sea Torque enclosed shafting system

Engine Room and Bilges

- Climate control using air condition units totaling 17,000 BTU
- S.S. Welded and polished engine beds
- Aluminum (marine grade 6mm) fuel tanks with proper sight gages, and accessible 20" inspection plates
- (6) 24 VDC heavy duty bilge pumps w/ ultra switches
- High bilge water alarm system
- S.S. air compressor hook up with hose
- 125 Vac oil change system for main engines and generators
- 60 gallon per minute emergency bilge pump system
- Fire hose pump system with hose connection at stbd bow trunk and stbd aft side deck locker
- Fresh water anchor washdown system at bow anchor area
- Freshwater hose and nozzle in engine room
- Delta "T" positive pressure engine room air intake system to minimize water ingestion w/ fire flap and demisters
- (1) 30 gallon and (1) 40 gallon hot water heater
- Central freshwater tank fills, port and stbd
- Dockside water pressure hook up at bow and stern
- (2) 125 Vac headhunter fresh water system pumps with filters
- Central drain system for upper and lower deck drains, sinks, etc. To minimize thru hull fittings
- 290 gallon holding tank with sewage treatment system, with deck fitting for pump out and two macerator pumps for overboard discharge (1) 110 Vac pump & (1) 24 vdc.
- 110 Vac florescent lighting in engine room
- Marine grade bronze sea cocks for all thru-hull fittings, bonded to bonding system
- "Whale" high output manual bilge pump

Superstructure and Deck

- Hand laminated FRP utilizing Bi & Uni-directional material with core cell sandwich, and vacuum bagging
- Proper high compression cores as required for hardware mounting (per plan)
- Four main watertight bulkheads padded and cored with appropriate sandwich materials
- Sylomer floating floor system (per plan) with sound absorption and insulation
- Sylomer floating bulkheads (per plan)
- Composite flooring system utilizing Sylomar floating floor design
- Exterior teak decking throughout

Equipment

- Ships hydraulic system by Wesmar, main engine driven, to run the following: 60 hp 16" dual prop vortex bow and stern thrusters, 16 square foot roll fin stabilizers, Maxwell 4500lb

anchor windlass

- Maxwell #4500 hydraulic windlass with (3) station controls
- (1) 220 lb. S.S. polished Ultra anchor, 262'x 5/8" high test chain
- "Nautical Structures" 2200 lb. Hydraulic davit with hydraulic rotation
- Aqua air, 18 ton chilled water air conditioning and heating system with variable speed drives and high voltage protection system
- Saltwater washdown at bow and stern
- Compressed air system for Buell air horns with engine room air hose
- HRO systems reverse osmosis water maker (2800 G.P.D.) with fresh water flush system
- Automatic fire extinguishing system with automatic engine shut down
- "Tecma" marine heads throughout

Electrical

- LED interior overhead lighting throughout interior
- (3) Fisher Panda 25 kW diesel generator with exhaust silencers, sound shield and custom gas/water separators (with workspace cover and sea rail)
- Generator Hours: Gen 1-745 hours, Gen 2-661 hours, Gen 3-728 hours
- (4) "Odyssey" PC 1700 drycell batteries for main engine start (2 ea. Engine)
- (2) "Odyssey" PC 1200 drycell batteries for emergency 12vdc backup.
- (16) "Trojan" L-16 6-volt batteries for ships 24-volt dc service system
- (2) "Xantrex" 4kw/120 amp inverter/charger for charging ships battery system, interface for 8kw and house battery bank monitoring panel
- Charles 24 volt battery charger for main engine batteries
- Charles 24 volt battery charger for service batteries (back up charger)
- (2) Newmar 24v to 12v converters
- (2) 120 amp (engine alternators) for charging engine start batteries
- (2) 120 amp (large frame engine alternators) for charging ships service batteries
- (2) Asea (AC50Q-1) Shore Power Converter
- (1) Charles marine 100 amp a/b switch
- Two (100') Marinco 100 amp shore power cords port and stbd aft on a Glendenning cable master
- (1) Marinco 100 amp shore power inlet fwd in trunk stbd side
- (1) Asea frequency conversion unit
- AC & DC backlit distribution/circuit breaker panels with digital amp & voltmeters
- Electrolysis and bonding system with copper strapping connected to (2) zinc plates at transom
- AC duplex receptacles through-out with GFI protection in dedicated areas
- "Bep" vapor proof battery selector switches
- "Exalto" heavy duty variable speed windshield wiper system
- International navigation lights
- (2) "ACR" high-intensity spotlights with single station controls
- "PBX" type phone/intercom system

Boat Deck

- Stbd side storage locker
- Port side locker with propane bottle storage
- Aft portside boat deck, integral steps down to aft deck with S.S. framed sliding hatch/cover
- Teak decks at boat deck area
- 2200 lb Nautical Structures hydraulic davit with hydraulic rotation
- S.S. 2" handrails around boat deck
- Freshwater washdown outlet for outboard engine flush
- Decks cambered & drains plumbed to insure no standing water

Sky Bridge

- Carbon fiber furniture, (2) curved settees, (1) fwd facing settee with table, (1) aft facing settee with table
- Carbon Fiber main arch with hard top
- Remote control Engine-Control Station
- Companionway hatch from Flybridge to Wheel House
- Navigation repeater and VHF console
- Overhead lighting in hard top and safety lights at deck level
- 1-1/2" handrails around Flybridge perimeter
- Teak decking on Flybridge

Main Deck Exterior

- Teak decking all around main deck
- All exterior stainless steel # 316 grade with Welds ground smooth and highly polished
- Seating area at bow with removable Carbon Fiber table and filler piece for making into large sun pad lounge
- Large storage lockers port and stbd at bow area (trunks)
- Central fuel tank fills port and stbd
- Cambered decks w/ outboard drain channels
- Watertight fwd deck hatch, access to anchor well. "Freeman hatch"
- Fwd deck hatch, and ventilation/escape hatch for fwd guest stateroom "Freeman hatch"
- Freshwater and saltwater wash down hook up at bow area
- Fire hose at fwd stbd bow locker with 50' hose and fire hose nozzle
- Built-in, high-pressure anchor chain wash system (fresh water)
- High polished S.S. handrails
- S.S. hawse holes and ballards
- Port & stbd bulwark doors
- LED Overhead lights on dimmer controls for walkarounds
- Deck safety lights at walkarounds on main deck Aft Deck

Aft Deck

- Teak decking
- Waring winches, port and stbd
- Port side integral stairway up to boat deck/fly-bridge (teak steps)
- FRP stbd side storage cabinet with refer, pop up TV and Corian counter top
- FRP molded bench seating with large dining table
- Port side locker with engine controls and thrusters
- LED overhead lights on dimmer controls
- VHF radio cabinet stbd side with PBX phone outlet
- Floodlights facing aft
- Fire hose at stbd side w/ 50' hose & fire hose nozzle

Owner's Stateroom and Head

- Access via Stbd side stairway up from main deck dining lounge, or boat deck via large sliding door
- King size walk around berth with large drawers and storage underneath
- Nightstands with drawers
- Cedar lined hanging closets port and stbd
- Dresser cabinets port and stbd sides
- (2) Wall mounted reading lights (Cantalupi)
- Large windows port and stbd
- Hidden combination safe, stbd
- Hidden Automated innovations TV lift in stowed position under bed, lifts to foot of bed viewing
- LED overhead lights on dimmer controls
- His and Hers Heads with Tecma full-size ceramic bowl
- Grohe faucets, Silestone counter tops and teak flooring.
- Fully enclosed shower with Grohe controls and Gel coated walls to match Silestone
- 110v ac duplex receptacles (GFI type in head)
- Accent lighting (per plan)
- Overhead exhaust fan

Dining Lounge

- Wet bar stbd side with beverage center, ice maker, bottle storage, and sink
- Bar height dining table with seating for eight
- Bar height buffet counter service from galley with four stools
- Forward storage cabinets and lockers with TV lift
- Port and stbd water tight Freeman sliding doors
- Stbd side stairway down to lower deck

- Large windows port, stbd, and forward for Panoramic viewing

Galley

- Granite counter tops
- Floating floor system
- A/C system
- Teak flooring
- Double sink with Grohe faucet
- (2) Sub-Zero full height refer with two freezer drawers at bottom section
- Large Sub Zero Wine Chiller
- Full-size dishwasher
- GE “Profile” trash compactor
- GE microwave with exhaust fan
- Wolf Gas cooktop and electric oven
- Soap dispenser
- Insinkerator stainless garbage disposal with countertop air switch
- Port side hinged dutch door from galley to side deck
- LED overhead lighting on dimmer controls

Day Head

- Port side window
- “Tecma” head
- Exhaust fan
- Silestone on lavatory cabinet top, teak sole
- LED overhead lights on dimmer controls
- 110v ac GFI protected duplex receptacle
- Accent lights at cabinet base and valance

Salon

- Single Freeman hinged aft door with fixed glass windows
- Extensive floor dampening system to reduce noise/vibration
- Cabin sole fitted with “Pyrotech” barrier padding
- LED overhead lighting with dimmer controls
- Stbd side aft, custom cabinet with wet bar, refrigerator, sink, icemaker, bottle and glass storage
- Automatic window blinds with remote
- Pop up TV

Pantry

- Large slide out pantry drawers
- DC electrical panel
- “Night Watch” ships monitoring system

Forward Stateroom and Head

- Custom size island berth with hinged access to storage underneath
- Single bunk port side on cabinet top
- A/C system
- Cedar lined hanging lockers
- Choice of woodwork with stain finish
- LED overhead lights on dimmer controls
- Storage lockers
- “Freeman” escape/ventilation hatch w/ “OceanAir” screens
- (2) Wall mounted reading lights (Cantalupi)
- Head with port light, Silestone countertop, ceramic sink, full enclosed Silestone shower with teak grate floor, louvered lockers, & “Tecma” head
- Grohe faucets and shower controls
- Accent lighting (per plan)
- 110v ac duplex receptacles (GFI type in head)
- Overhead exhaust fan
- TV

Port Guest Stateroom and Head

- King size walk-around Berth with drawers and storage underneath
- A/C system
- Cedar lined hanging lockers
- LED overhead lights on dimmer controls
- (2) Wall mounted reading lights (Cantalupi)
- (2) Opening port lights - port side
- Wall mounted TV
- Port side head with port light, Silestone countertop, teak flooring, ceramic sink, full enclosed Silestone shower with teak grate floor, louvered lockers, and “Tecma” head
- Grohe faucets and shower controls
- Accent lighting (per plan)
- 110v ac duplex receptacles (GFI type in head)
- Overhead exhaust fan

Laundry / Tech Room

- Full-size Whirlpool washer/dryer
- Entertainment center/tech closet
- (1) large non-opening port light above desk/counter top on stbd side
- Internet connection
- Large storage under stairway

VIP Stateroom and Head

- King size walk around berth with drawers and storage underneath
- A/C system
- Cedar lined hanging lockers
- LED overhead lights on dimmer controls
- (2) Wall mounted reading lights (Cantalupi)
- (2) Large non-opening port lights
- Wall mounted TV with hidden storage
- Stbd head with port light, Silestone countertop, teak flooring, ceramic sink, full enclosed Silestone and FRP shower with teak grate floor, louvered lockers, and “Тесма” head
- Grohe faucets and shower controls
- Accent lighting (per plan)
- 110v ac duplex receptacles (GFI type in head)
- Overhead exhaust fan

Captains Cabin and Head

- Access from either cockpit through water tight door or port side crew door
- A/C system
- Wide elevated berth with lockers or drawers
- Opening port light, stbd side above berth
- “Тесма” head, ceramic sink w/ Grohe faucets, Corian lav counter top, FRP shower with glass door and FRP floor
- 110v ac duplex receptacles (GFI type in head)
- LED overhead lighting with dimmer controls
- Overhead exhaust fan

Crew Cabin and Head

- Air/con system
- Upper and lower bunks
- Opening port light

- Cedar lined hanging locker
- “Tecma” head, ceramic sink w/ Grohe faucets, Silestone lavatory countertop, FRP shower with glass door and FRP floor
- 110v ac duplex receptacles (GFI type in head)
- LED overhead lighting with dimmer controls
- Combination safe
- Overhead exhaust fan

Aft Mess and Crew Area

- A/C system
- Opening port light, port side
- LED overhead lighting with dimmer controls
- Corian countertops, S.S. sink with Scanvick faucet, microwave, Sub-Zero under counter refrigerator and Sub-Zero under counter freezer, GE cooktop two-burner, lockers for dishes
- Settee and removable sliding carbon fiber table
- (2) Full-size GE washer and (2) full-size dryers
- Access door to Lazzerette
- 110v ac duplex receptacles (GFI type in galley)

Wheel House

- Center helm station with complete engine control and thruster controls instrumentation and alarms, Garmin navigation electronics (see list), “Night Watch” ships monitoring system
- Red overhead lights above dash for navigating
- Corian counter top with chart light
- A/C, heating and windshield defroster system
- Custom built electric berthable helm chairs x 3
- AC & DC electrical panels
- Stbd side stairway down to main deck
- Drop down access ladder to Sky Bridge

Main Deck Dining Lounge

- Pop up TV, storage cabinets, dining table and chairs
- Wet bar with refrigerator, ice maker, and sink
- Remote station for engine controls
- Port and starboard custom "Freeman Marine" sliding doors
- Access stairs to wheelhouse and skymaster
- Access stairwell to forward guest staterooms

Swim Platform and Cockpit

- Teak decking with stairway port side up to aft deck (teak steps)
- Hand-held hot & cold water shower
- (3) Extra-large pop-up cleats, port center and stbd
- Water tight “Freeman” door, access to utility/crew and engine room
- S.S. hand rails at stairs up to aft deck
- Water proof safety lights at stairs up to aft deck
- Salt water hook-up
- (6) Underwater lights, in stern area
- (2) underwater Video cameras one facing aft, one facing forward
- Built-in cabinets stbd cockpit, sink and storage
- Robust Tow system integrated with tow line lockers
- 300 gallon gasoline tank

Wheel House Interior

- Full Garmin Navigation Package
- Center helm station with complete engine instrumentation & alarms, and “Night Watch” ships monitoring system
- A/C, heating and defrosting
- (3) Raised custom helm loungers
- STBD Aft door with access to master stateroom and boat deck
- Teak cabin sole
- 10mm clear fwd windshield glass
- AC & DC electrical panels
- LED overhead lighting with dimmer controls
- Red overhead lights above dash for navigating
- Electric blinds at port and stbd side windows
- Stbd side stairway down to main deck
- Center pull down ladder to access flybridge

Tech Room

- Audio/Video rack with an integrated system for yacht
- (1) full-size GE washer and (1) full-size GE dryer
- Internet station
- Misc storage lockers
- Nonopening port light
- Desk with Silestone counter top
- (2) 110v ac duplex receptacles, GFI type

Interior Design

- Painted satin finish with Boiserie Panels and Teak accents
- Engineering satin finish Teak flooring
- Floating floors
- Imtra LED overhead lighting on dimmer controls throughout
- Imtra accent lighting
- Cantolupi reading lights
- Cantolupi art lights (per plan)
- Beadboard satin finish headliner throughout
- Silestone counter tops, and showers
- Hunter Douglas electric and manual blinds
- Emtek interior door hardware

Broker Comments

KAYTOO sails in a class of its own when it comes to innovative layout and comfortability! This 100' Paragon Sky Master offers accommodations for eight guests in a three king, one queen stateroom layout. The sky master creates an extraordinarily private experience for the owner. Located aft of the pilothouse, the master stateroom has an exterior owners deck, which is an experience often only found on much larger vessels. The crew friendly layout along with the sky master make KAYTOO perfect for the owner that prefers crew or could easily be run by a yachting family. Entertaining is sure to be a success on board with the nicely outfitted Bahamas style cockpit, forward facing bow dining, and the sky bridge with fore and aft facing seating. If you are looking for 100' yacht with that something extra KAYTOO will be sure to impress.

Исключения

При продаже яхты исключаются личные вещи владельца.

Отказ от ответственности

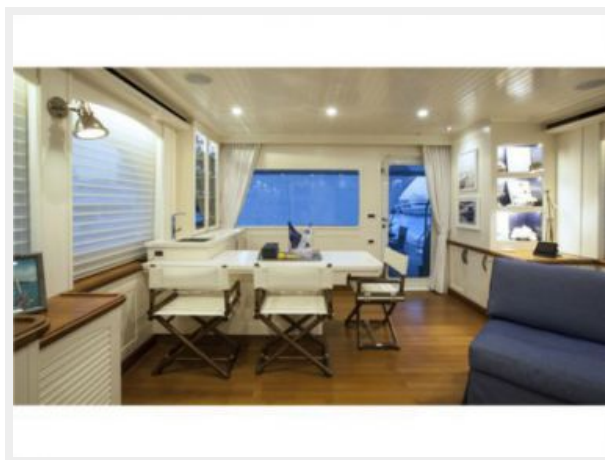
Компания предоставляет описание судна или яхты добросовестно, но не может гарантировать точность этой информации, а также не ручается за техническое состояние. Покупатель должен проинструктировать своих агентов или оценщиков исследовать представленную информацию более подробно, по собственному желанию. Продажа судна или яхты, изменение цены или снятие с продажи будет происходить без предварительного уведомления.

ФОТОГРАФИИ

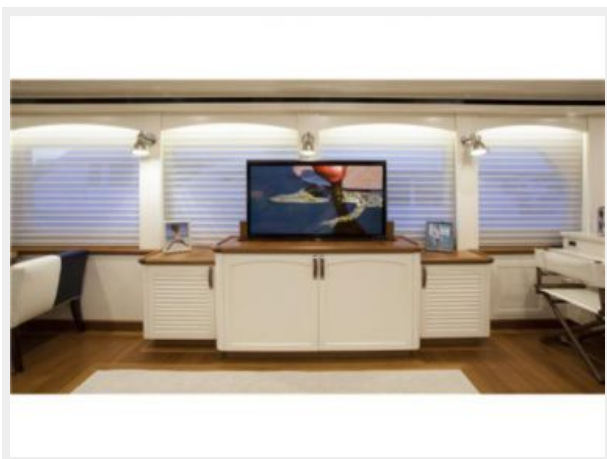
Salon



Salon



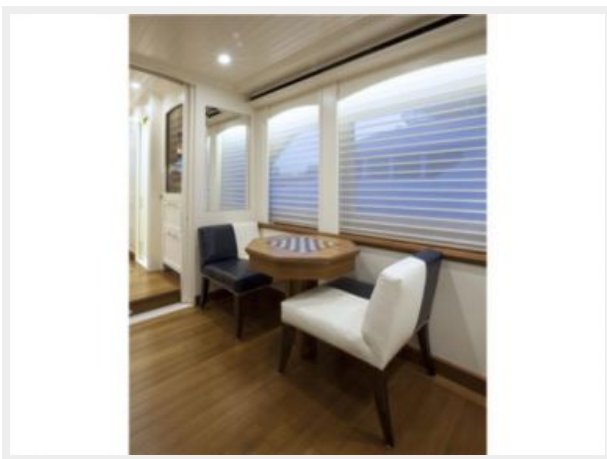
Salon



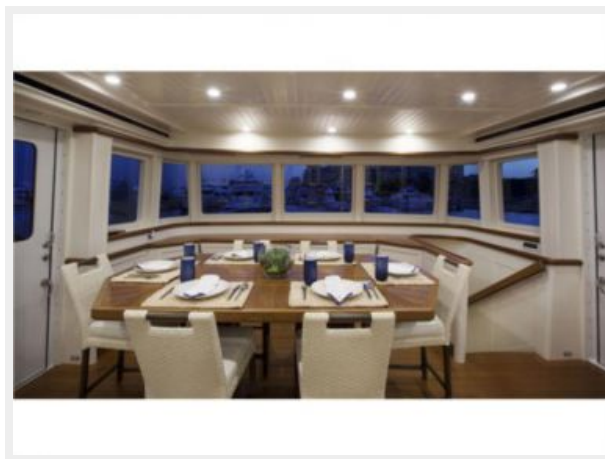
Salon



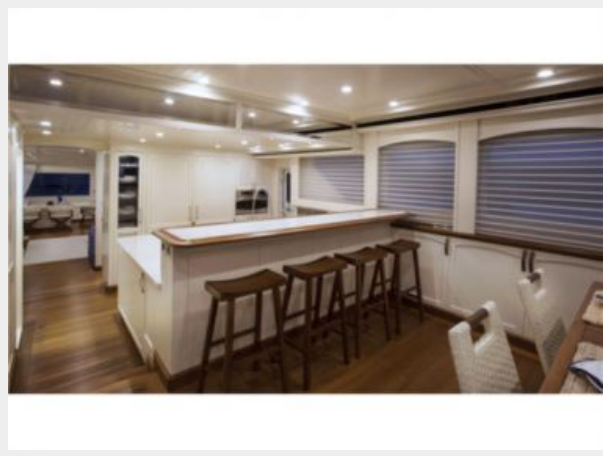
Game Table



Dining Lounge



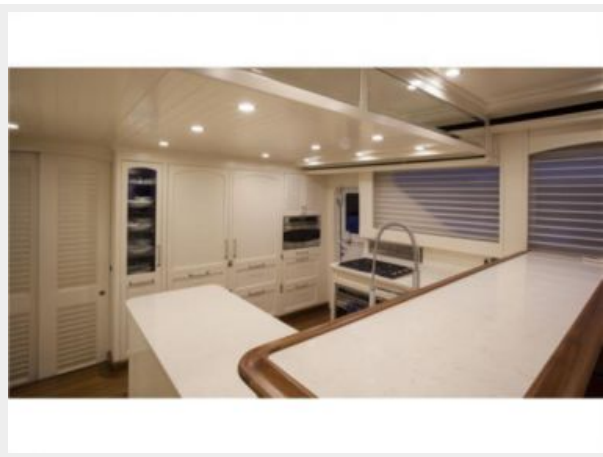
Galley



Galley



Galley



Captain's Quarters



Crew Hallway/Laundry



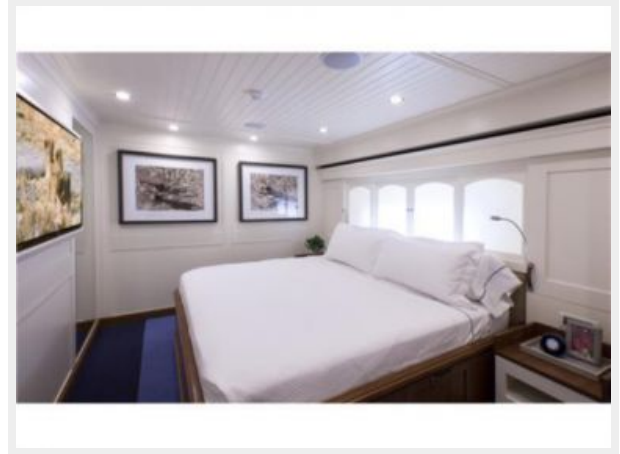
Crew Mess



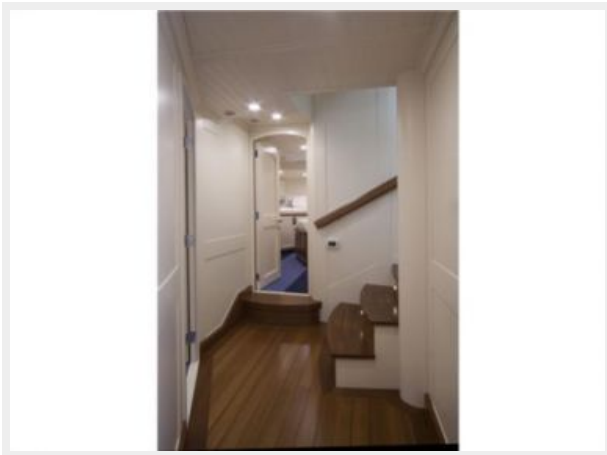
Crew Stateroom



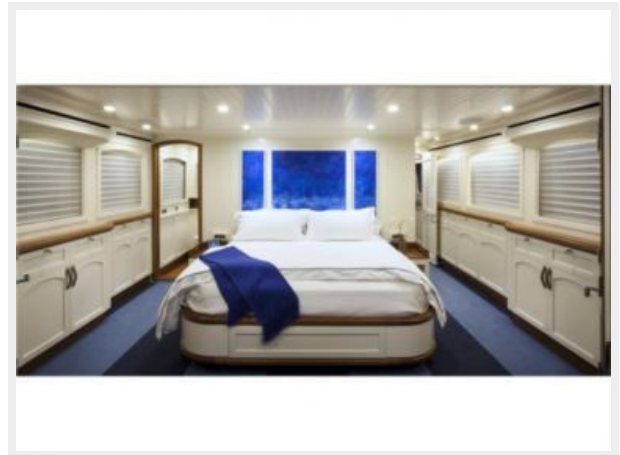
Forward King Stateroom



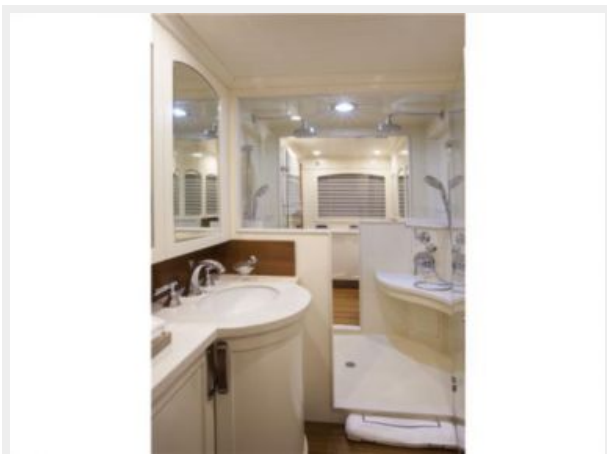
Hallway



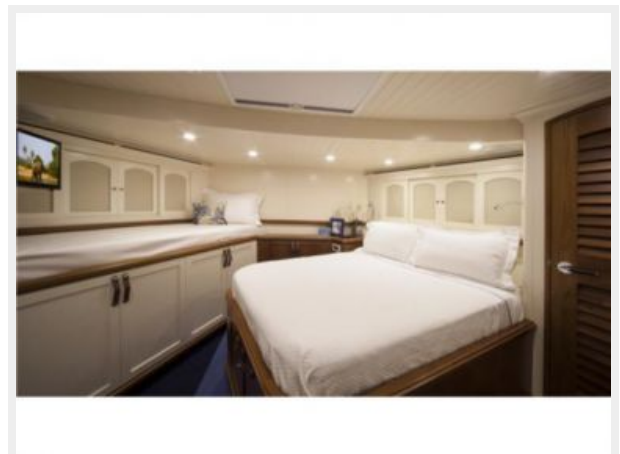
Sky Master



Sky Master Head



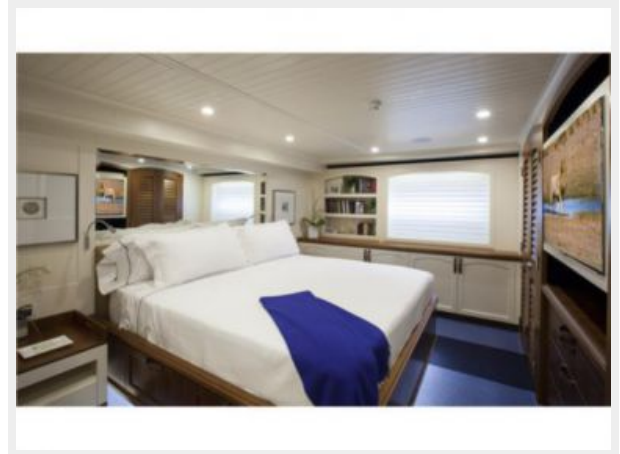
Forward V-Berth Stateroom



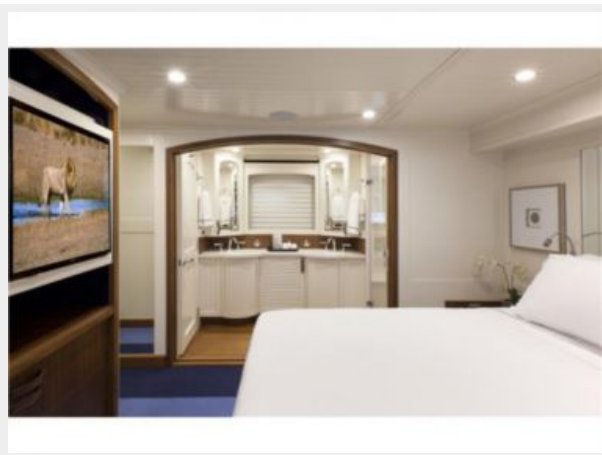
Forward V-Berth Stateroom



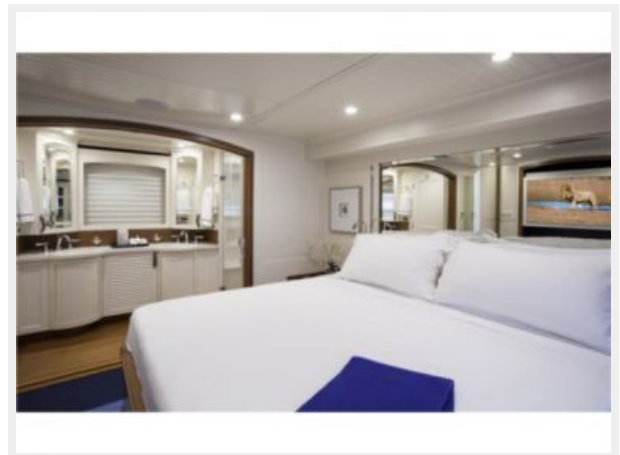
Midships King Stateroom



Midships King Stateroom



Midships King Stateroom



Midships King Stateroom Head



Wheelhouse



Owner's Deck



Owner's Deck



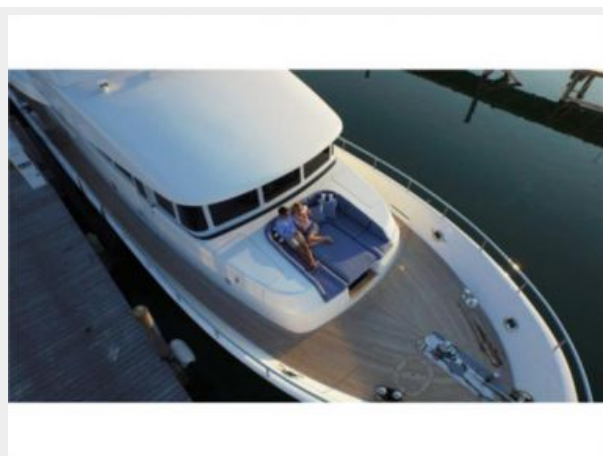
Bahamas Cockpit



Aft Deck



Bow



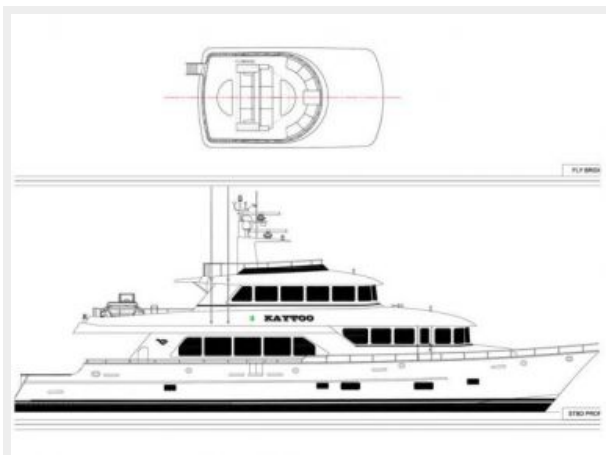
Bow



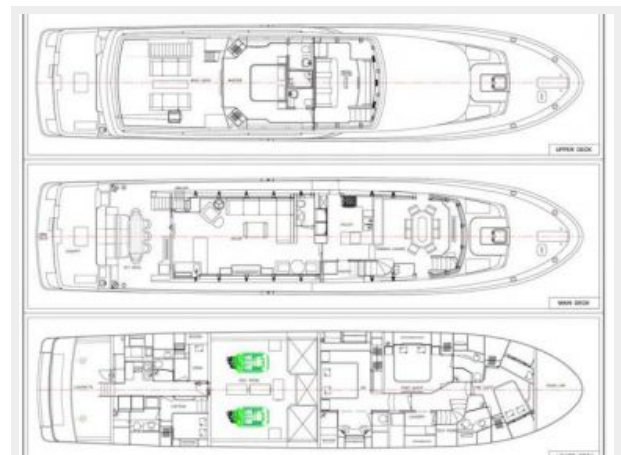
Sky Bridge



General Arrangement



General Arrangement



КОНТАКТЫ

Андрей Шестаков (Andrey Shestakov) – ведущий яхтенный брокер отдела продаж яхт и судов компании Shestakov Yacht Sales Inc. Официальный представитель Shestakov Yacht Sales Inc. для русскоговорящих клиентов в центральном офисе компании в Майами/Форт Лодердейл/Флорида/США.

Контактная информация

Email: andrey@shestakovyachtsales.com

Web: shestakovyachtsales.com

Телефоны

Краснодарский край: **+7(918)465-66-44**

США, Майами, Флорида: **+1(954)274-4435**

Время работы

Понедельник – Суббота: **9:00 - 21:00**
EDT

Воскресенье: **Закрето**

Адрес



Harbour Towne Marina, 850 NE 3rd St,
STE 213, Dania, FL 33004