

LEXUS LADY — HATTERAS



Builder: HATTERAS

Year Built: 2012

Model: Motor Yacht

Price: PRICE ON APPLICATION

Location: United States

LOA: 80' 0" (24.38m)

Beam: 21' 3" (6.48m)

Min Draft: 5' 5" (1.65m)

Max Draft: 5' 10" (1.78m)

Cruise Speed: 19 Kts. (22 MPH)

Max Speed: 23 Kts. (26 MPH)

Our experienced yacht broker, Andrey Shestakov, will help you choose and buy a yacht that best suits your needs **Lexus Lady — HATTERAS** from our catalogue. Presently, at Shestakov Yacht Sales Inc., we have a wide variety of yachts available on our sale's list. We also work in close contact with all the big yacht manufacturers from all over the world.

If you would like to buy a yacht **Lexus Lady — HATTERAS** or would like help answering any questions concerning purchasing, selling or chartering a yacht, please call **+1(954)274-4435**

TABLE OF CONTENTS

TABLE OF CONTENTS	2
SPECIFICATIONS	3
Overview	3
Basic Information	3
Dimensions	3
Speed, Capacities and Weight	3
Accommodations	3
Hull and Deck Information	4
Engine Information	4
DETAILED INFORMATION	5
Accommodations	5
Exclusions	10
Disclaimer	10
PHOTOS	11
CONTACTS	23
Contact details	23
Telephones	23
Office hours	23
Address	23

SPECIFICATIONS

Overview

Basic Information

Category: Motor Yacht

Model Year: 2013

Year Built: 2012

Country: United States

Dimensions

LOA: 80' 0" (24.38m)

Beam: 21' 3" (6.48m)

Min Draft: 5' 5" (1.65m)

Max Draft: 5' 10" (1.78m)

Speed, Capacities and Weight

Cruise Speed: 19 Kts. (22 MPH)

Max Speed: 23 Kts. (26 MPH)

Displacement: 190000 Pounds

Water Capacity: 326 Gallons

Holding Tank: 388 Gallons

Fuel Capacity: 2858 Gallons

Accommodations

Total Cabins: 4

Total Heads: 6

Captain Cabin: True

Crew Cabin: 2

Crew Heads: 1

Hull and Deck Information

Hull Material: Fiberglass

Deck Material: Fiberglass

Hull Configuration: Modified Deep Vee

Engine Information

Engines: 2

Manufacturer: CAT

Model: C-32 Acerts

Fuel Type: Diesel

DETAILED INFORMATION

Accommodations

Of the numerous motor yacht models Hatteras has presented, the 80 may just be the most successful. The 80 Hatteras has an attractive profile, genius space planning, both owner and crew *friendly*, and a most capable sea boat. And if considering one of these desirable vessels, your search isn't complete until you go aboard **Lexus Lady**. She was originally commissioned as Varsity Jacket (a well recognized name in a long-line of quality vessels). The current and second owner is an astute yachtsman who has lavished in excess of \$500,000 (documented) of tangible improvements since mid 2017 to date.

Aft Deck

Boarding can be from either port or starboard -- forward or aft. Let's start from the teak covered aft deck which includes built in covered seating @ the transom, with varnished teak table and chairs. Hardtop with A/C lighting and Pioneer Marine waterproof speakers. There is a wet bar to starboard with bridge access to port and stairs aft to port & starboard go down to the fiberglass swim platform. Here you will find stainless steel swim ladder, hoop *rails*, 2 pop up cleats, hot & cold shower, and salt & fresh water wash down. Dual 100 amp and 50 amp shore cord connections on the stern. A Pacific Coast weather-tight door leads forward to crew quarters and engine room.

MAIN SALON

Enter the stunning main salon thru electric, double – floor to ceiling stainless framed glass doors. The décor theme is *modern contemporary*, blending with fairly traditional wood treatments and cabinetry. Hi-gloss African mahogany – flat panels with black inlays is featured throughout. Included in the headliner are varnished teak inlays with LED lighting. The custom carpeting is cream colored silk like sheen (with carpet runners from salon to galley). Hunter Douglass electric silhouette blinds are controlled from the Crestron remote.

Slightly forward to starboard is a “one of a kind” crescent shaped bar that is the most incredible feature of this open and inviting room. The bar top is hand made of semi-precious stones from Madagascar with nautical shells incrustated resin and varnished teak border. Four Kartell Eros acrylic swivel chairs are most comfortable. This is all enhanced by dramatic back lighting after the sun sets. The bar contains an Isotherm refrigerator drawer, Uline icemaker, stainlee steel sink and is complimented by white Onyx flooring. The aft port corner houses the 46” Samsung flush mounted flat screen HD TV and entertainment center (to include Surround Sound speakers). A Crestron system operates the A/V features, with remotes throughout vessel, with iPod docking stations. Also included here is cabinetry with glass storage and storage below.

Across to port is a Cassina dodo swivel/reclining chair. The custom designed sofa,

manufactured by Grafton Furniture is pearl/cream color Edelman leather, with much needed storage below. Included are two integrated lamps. The specialty ottoman in front of sofa has acrylic legs with pink flamingo tufted velvet. Next forward is a handmade acrylic & dark zebra wood desk with zebra pattern velvet seat cushion.

The port bulkhead features a china hutch with two display cases for crystal glass & stemware and two concealed Uline wine chillers. A Beverly's tropical glass sculpture is mounted in center of cabinetry. The bulkhead across to starboard is accented by a mounted starburst convex mirror with custom stainless steel high gloss ebony console below.

The on-deck powder room -- forward starboard salon is slightly larger than the Hatteras standard version. It includes Thasos marble floors with a Vitraform glass pedestal sink. The walls are Sicis mosaic aqua tiles. Also featured is a Roma Italian hand carved molded frame mirror.

Galley

Moving forward thru a pocket door is the country galley. The stone work on all counter tops is Caribbean blue granite. The ottomans below the dinette forward to starboard are Maglite pearl vinyl. Appliances include Sub-Zero 685 refrigerator/freezer with ice maker, two additional Sub-Zero refrigerator drawers forward to port, 4 burner ceramic cook top, microwave/convection oven, dishwasher, garbage disposal and Rohl stainless goose neck faucet at stainless sink. A 22" Samsung HD TV and surround sound speakers. There is a built in (pull out) pantry and wood fascia inserts are featured on appliances to match African mahogany wood treatments. The flooring is Amtico.

Fly Bridge

Up the internal stairway from aft starboard section of galley to the air-conditioned fly bridge. The teak deck was added recently, along with custom rails and seating. In particular, there are 2 curved settees furthest aft to port and starboard, with round teak tables. There is a Pipewelders hard top with LED lighting overhead. The helm station includes two Pompanette captain chairs and a full complement of navigation systems and gauges. The patented Hatteras monitors serve as diagnostic assist for ship's systems. A portable Hater top loading freezer is installed to forward to port. 8man life raft installed. The portside Key Bar has varnished teak counter-top and 3 Pompanette bar stools with stainless steel pedestals. The L shaped settee across to starboard features two hydraulically operated HI-LOW tables with new varnished teak tops, matching Key Bar. A crescent shaped settee is to port with double BBQ grills behind in glass cabinetry.

Electronics

(3) garmin 7215 15" gps/chart plotters

FLIR M-324XP

- (1) garmin 1206, 12kw radar with a 6' antenna
- (1) garmin gsd26 sounder with 1kw chirp transducer
- (2) icom 604 vhf radios with 2 hailer horns
- (1) Simrad ap28 autopilot
- (2) furuno rd33 digital depth with wind indicators
- (1) kvh HD7 TV antenna with 6 receivers
- (1) Acr cat 1 Eprib
- (1) kvh V3 sat phone with access point and network
- (1) Panasonic phone system with 9 phones and extensions
- (4) cameras, engine room and aft deck
- (1) Ghost security alarm system remote camera access and monitoring for doors, smoke, low voltage and high water
- (1) 1500 gallon per day water maker
- (1) Gamin ais
- (1) geosat wifi system

AV package

Salon and state rooms :Samsung blue ray's, apple TV's, sonos players, and Creston remotes, iPod docks, and all Samsung tv's

46" salon

40" master

(3) 32" guest state rooms

(2) 22" galley and crew

Master Stateroom

Accessing down the curved stairwell to the four staterooms you will be greeted by a white Onyx foyer. Washer/Dryer, linen closet and storage locker found here.

The master suite is full width – amidships, accessed thru arched etched passage way door. Featured are six oval shaped portlights to port & starboard and a king size bed, with HMC mattress (same in all staterooms). There is custom Italian linen bedding with valance and neck roll pillow of French silk. The varnished African mahogany is sketched with black inlays and the counter tops are black marble. Custom Barbara Berry black head board and fixed Italian glass lamps on built in night stands. A drop-down 50” Samsung TV with surround sound speakers is controlled by Crestron remote. Two cedar lines closets with safe and automatic lights.

His & Hers head and shower are complimented by black marble floors and Headhunter fresh water marine toilets (as found in all bathrooms throughout). The counter tops and shower are Calcutta marble, with integral sink and storage cabinet.

Forward Vip

The forward VIP has a centerline queen berth with cedar-lined storage below accessed by gas cylinders. Generous hanging lockers and drawers. There is an Italian hand carved framed mirror and Maglite pearl linen wall coverings. The comforter & pillow shams are hand painted silk. Carpeted flooring & Samsung 32” HD TV and sound system The ensuite bathroom and shower have Mica wall covering with Mother of Pearl tile, incorporating marble accents. Marble flooring - counter tops are Calcutta marble.

Vip port side guest stateroom

The VIP guest stateroom to port has a walk around queen berth with storage below, carpeted flooring, Maya Romanoff wall covering and custom wood veneer sconce lamps. Samsung 32” HD TV. Ample storage in closet and drawers. The bathroom has marble flooring, with quartzite shower and counter tops.

Starboard guest stateroom

The starboard guest stateroom features cross over single berths with fabrics by Duralee. The bathroom features marble flooring, quartzite counter tops and splashboard. This *cozy cabin* also has 32” Samsung HD TV and plenty of storage

Crew Quarters Aft

Accessed thru transom door or thru aft deck stairwell. There are two separate cabins, one with walk around queen berth -- the other with upper & lower bunks. They share a head & shower. A crew lounge is featured with refrigerator/ freezer and microwave/convection oven -- 22” Samsung HD TV. Washer/Dryer

Engine Room

This most impressive walk in/stand up engine room is spotless and houses the twin **1600 hp. Caterpillar C-32 Acerts with 1240 total hours. The twin 27.5 Onan Generators have 1370 port/1440 Starboard hours** -- all service requirements current, with records in captain’s log

- Hydraulic 35 hp. bow thruster -- stern thruster
- American Bow Thruster Track stabilizers with 7.5 square fins
- 2 Chilled water A/C compressors
- 6 DC 24 volt sump pumps
- 230 volt AC freshwater pump with spare
- 230 volt AC sewage pump plumbed for dockside pump-out.
- 110 volt AC oil change system -- 24 volt electric fuel primers
- Gray and black water tanks w/ 230 volt AC sewage pump out
- FM200 fixed fire extinguishing system
- Raycor fuel filters mains & generators
- Breath Easyair purifiers on all interior air handlers
- H2O reverse osmosis water maker -- 1500 gallons per day
- 3 sets underwater lights

Forward Deck

- custom bow deck seating
- 4000 lb. hydraulic Maxwell anchor windless with deck mounted controls
- 110 lb. plow anchor -- stainless steel anchor chute and roller
- Dual 100 amp and 50 amp shore cord connections
- Fresh & salt water wash down
- Marquipt Tide Ride 8 step sea stairs

LEXUS LADY is in the top echelon of yachts we have had the privilege of representing in the 45 plus years of yacht brokerage. Having sold her new (as Varsity Jacket) we can attest to approximately \$1,500,000 of upgrades and optional equipment. A list of \$500,00 plus in recent improvements is available. An extreme pleasure to show, she is meticulously maintained throughout. Located in Fort Lauderdale.

Exclusions

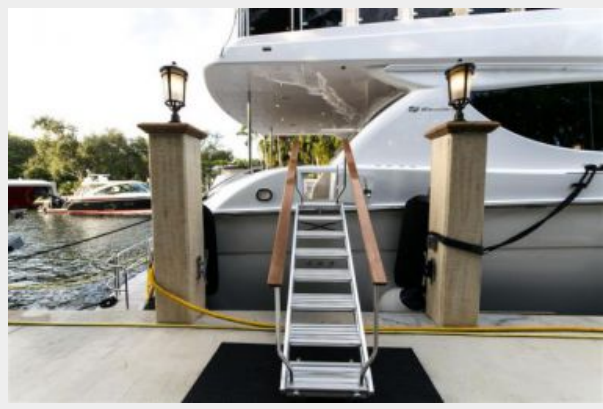
Owner's personal belongings.

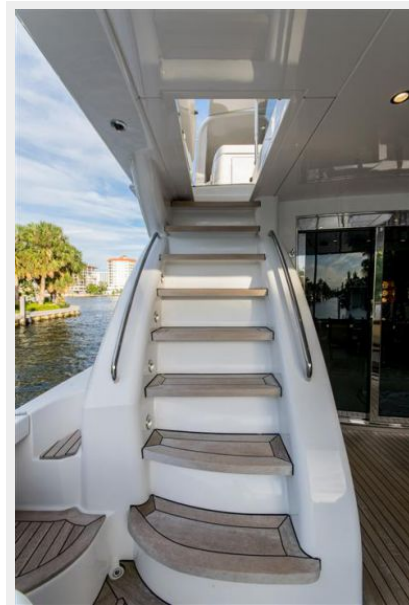
Disclaimer

The Company offers the details of this vessel or yacht in good faith but cannot guarantee or warrant the accuracy of this information nor warrant the condition of the vessel. A buyer should instruct his representatives, agents, or his surveyors, to investigate such details as the buyer desires validated. This vessel or yacht is offered subject to prior sale, price change, or withdrawal without notice.

PHOTOS

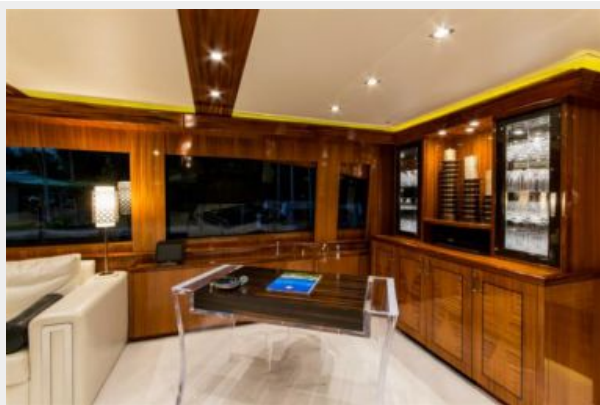










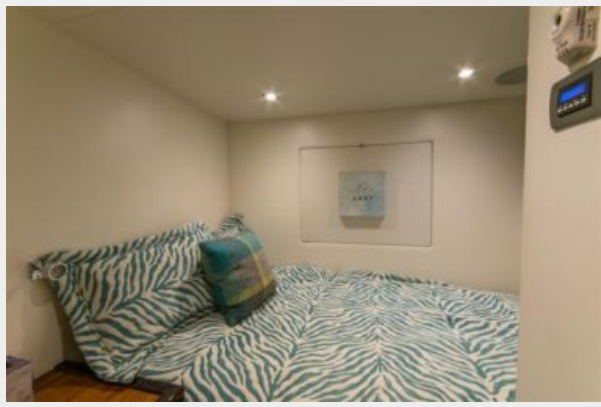














CONTACTS

Andrey Shestakov, leading yacht broker of the sales department of Shestakov Yacht Sales Inc. Shestakov Yacht Sales Inc., the official representative of the Miami/Fort Lauderdale FL headquarters.

Contact details

Email: andrey@shestakovyachtsales.com

Web: shestakovyachtsales.com/en/

Telephones

USA: +1(954)274-4435

Office hours

Monday – Saturday: **9:00 - 21:00** EDT

Sunday: **closed**

Address



Harbour Towne Marina, 850 NE 3rd St,
STE 213, Dania, FL 33004