

## LEXUS LADY — HATTERAS



**Судостроитель:** HATTERAS

**Год постройки:** 2012

**Модель:** Моторная яхта

**Цена:** **ЦЕНА ЯХТЫ ПО ЗАПРОСУ**

**Местонахождение:** United States

**Длина общая:** 80' 0" (24.38m)

**Ширина:** 21' 3" (6.48m)

**Мин. осадка:** 5' 5" (1.65m)

**Макс. осадка:** 5' 10" (1.78m)

**Крейс. скорость:** 19 Kts. (22 MPH)

**Макс. скорость:** 23 Kts. (26 MPH)

Купить Lexus Lady — HATTERAS а также выбрать подходящую вам яхту из нашего каталога яхт вам поможет опытный яхтенный брокер Андрей Шестаков. На сегодняшний день компания Shestakov Yacht Sales Inc. имеет большое количество яхт в собственном списке продаж, а также тесно сотрудничает со всеми крупными яхтенными производителями по всему миру.

Для того чтобы купить яхту Lexus Lady — HATTERAS а также проконсультироваться по любому вопросу связанному с покупкой, продажей, чартером яхт позвоните по телефону **+7(918)465-66-44**.

# ОГЛАВЛЕНИЕ

---

ОГЛАВЛЕНИЕ	2
ХАРАКТЕРИСТИКИ	3
Обзор	3
Основная информация	3
Размеры	3
Скорость, вместимость и масса	3
Размещение	3
Корпус и палуба	4
Информация о двигателе	4
ПОДРОБНОЕ ОПИСАНИЕ	5
Accommodations	5
Исключения	10
Отказ от ответственности	10
ФОТОГРАФИИ	11
КОНТАКТЫ	23
Контактная информация	23
Телефоны	23
Время работы	23
Адрес	23

# ХАРАКТЕРИСТИКИ

## Обзор

## Основная информация

Тип судна: Моторная яхта

Модельный год: 2013

Год постройки: 2012

Страна: United States

## Размеры

Длина общая: 80' 0" (24.38m)

Ширина: 21' 3" (6.48m)

Мин. осадка: 5' 5" (1.65m)

Макс. осадка: 5' 10" (1.78m)

## Скорость, вместимость и масса

Крейс. скорость: 19 Kts. (22 MPH)

Макс. скорость: 23 Kts. (26 MPH)

Водоизмещение: 190000 Pounds

Вместимость воды: 326 Gallons

Вместимость сточного бака: 388 Gallons Объем топливного бака: 2858 Gallons

## Размещение

Всего кают: 4

Всего ком. состава: 6

Каюта капитана: Да

Каюты экипажа: 2

Комм. состав экипажа: 1

## Корпус и палуба

---

**Материал корпуса:** Fiberglass

**Материал палубы:** Fiberglass

**Комплектация корпуса:** Modified Deep  
Vee

## Информация о двигателе

---

**Двигатели:** 2

**Производитель:** CAT

**Модель:** C-32 Acerts

**Тип топлива:** Diesel

# ПОДРОБНОЕ ОПИСАНИЕ

## Accommodations

Of the numerous motor yacht models Hatteras has presented, the 80 may just be the most successful. The 80 Hatteras has an attractive profile, genius space planning, both owner and crew *friendly*, and a most capable sea boat. And if considering one of these desirable vessels, your search isn't complete until you go aboard **Lexus Lady**. She was originally commissioned as Varsity Jacket ( a well recognized name in a long-line of quality vessels). The current and second owner is an astute yachtsman who has lavished in excess of \$500,000 (documented) of tangible improvements since mid 2017 to date.

### Aft Deck

Boarding can be from either port or starboard -- forward or aft. Let's start from the teak covered aft deck which includes built in covered seating @ the transom, with varnished teak table and chairs. Hardtop with A/C lighting and Pioneer Marine waterproof speakers. There is a wet bar to starboard with bridge access to port and stairs aft to port & starboard go down to the fiberglass swim platform. Here you will find stainless steel swim ladder, hoop *rails*, 2 pop up cleats, hot & cold shower, and salt & fresh water wash down. Dual 100 amp and 50 amp shore cord connections on the stern. A Pacific Coast weather-tight door leads forward to crew quarters and engine room.

### MAIN SALON

Enter the stunning main salon thru electric, double – floor to ceiling stainless framed glass doors. The décor theme is *modern contemporary*, blending with fairly traditional wood treatments and cabinetry. Hi-gloss African mahogany – flat panels with black inlays is featured throughout. Included in the headliner are varnished teak inlays with LED lighting. The custom carpeting is cream colored silk like sheen (with carpet runners from salon to galley). Hunter Douglass electric silhouette blinds are controlled from the Crestron remote.

Slightly forward to starboard is a “one of a kind” crescent shaped bar that is the most incredible feature of this open and inviting room. The bar top is hand made of semi-precious stones from Madagascar with nautical shells incrustated resin and varnished teak border. Four Kartell Eros acrylic swivel chairs are most comfortable. This is all enhanced by dramatic back lighting after the sun sets. The bar contains an Isotherm refrigerator drawer, Uline icemaker, stainlee steel sink and is complimented by white Onyx flooring. The aft port corner houses the 46” Samsung flush mounted flat screen HD TV and entertainment center (to include Surround Sound speakers). A Crestron system operates the A/V features, with remotes throughout vessel, with iPod docking stations. Also included here is cabinetry with glass storage and storage below.

Across to port is a Cassina dodo swivel/reclining chair. The custom designed sofa,

manufactured by Grafton Furniture is pearl/cream color Edelman leather, with much needed storage below. Included are two integrated lamps. The specialty ottoman in front of sofa has acrylic legs with pink flamingo tufted velvet. Next forward is a handmade acrylic & dark zebra wood desk with zebra pattern velvet seat cushion.

The port bulkhead features a china hutch with two display cases for crystal glass & stemware and two concealed Uline wine chillers. A Beverly's tropical glass sculpture is mounted in center of cabinetry. The bulkhead across to starboard is accented by a mounted starburst convex mirror with custom stainless steel high gloss ebony console below.

The on-deck powder room -- forward starboard salon is slightly larger than the Hatteras standard version. It includes Thasos marble floors with a Vitraform glass pedestal sink. The walls are Sicis mosaic aqua tiles. Also featured is a Roma Italian hand carved molded frame mirror.

## Galley

Moving forward thru a pocket door is the country galley. The stone work on all counter tops is Caribbean blue granite. The ottomans below the dinette forward to starboard are Maglite pearl vinyl. Appliances include Sub-Zero 685 refrigerator/freezer with ice maker, two additional Sub-Zero refrigerator drawers forward to port, 4 burner ceramic cook top, microwave/convection oven, dishwasher, garbage disposal and Rohl stainless goose neck faucet at stainless sink. A 22" Samsung HD TV and surround sound speakers. There is a built in (pull out) pantry and wood fascia inserts are featured on appliances to match African mahogany wood treatments. The flooring is Amtico.

## Fly Bridge

Up the internal stairway from aft starboard section of galley to the air-conditioned fly bridge. The teak deck was added recently, along with custom rails and seating. In particular, there are 2 curved settees furthest aft to port and starboard, with round teak tables. There is a Pipewelders hard top with LED lighting overhead. The helm station includes two Pompanette captain chairs and a full complement of navigation systems and gauges. The patented Hatteras monitors serve as diagnostic assist for ship's systems. A portable Hater top loading freezer is installed to forward to port. 8man life raft installed. The portside Key Bar has varnished teak counter-top and 3 Pompanette bar stools with stainless steel pedestals. The L shaped settee across to starboard features two hydraulically operated HI-LOW tables with new varnished teak tops, matching Key Bar. A crescent shaped settee is to port with double BBQ grills behind in glass cabinetry.

## Electronics

(3) garmin 7215 15" gps/chart plotters

FLIR M-324XP

- (1) garmin 1206, 12kw radar with a 6' antenna
- (1) garmin gsd26 sounder with 1kw chirp transducer
- (2) icom 604 vhf radios with 2 hailer horns
- (1) Simrad ap28 autopilot
- (2) furuno rd33 digital depth with wind indicators
- (1) kvh HD7 TV antenna with 6 receivers
- (1) Acr cat 1 Eprib
- (1) kvh V3 sat phone with access point and network
- (1) Panasonic phone system with 9 phones and extensions
- (4) cameras, engine room and aft deck
- (1) Ghost security alarm system remote camera access and monitoring for doors, smoke, low voltage and high water
- (1) 1500 gallon per day water maker
- (1) Gamin ais
- (1) geosat wifi system

### **AV package**

Salon and state rooms :Samsung blue ray's, apple TV's, sonos players, and Creston remotes, iPod docks, and all Samsung tv's

46" salon

40" master

(3) 32" guest state rooms

(2) 22" galley and crew

### **Master Stateroom**

Accessing down the curved stairwell to the four staterooms you will be greeted by a white Onyx foyer. Washer/Dryer, linen closet and storage locker found here.

The master suite is full width – amidships, accessed thru arched etched passage way door. Featured are six oval shaped portlights to port & starboard and a king size bed, with HMC mattress (same in all staterooms). There is custom Italian linen bedding with valance and neck roll pillow of French silk. The varnished African mahogany is sketched with black inlays and the counter tops are black marble. Custom Barbara Berry black head board and fixed Italian glass lamps on built in night stands. A drop-down 50” Samsung TV with surround sound speakers is controlled by Crestron remote. Two cedar lines closets with safe and automatic lights.

His & Hers head and shower are complimented by black marble floors and Headhunter fresh water marine toilets (as found in all bathrooms throughout). The counter tops and shower are Calcutta marble, with integral sink and storage cabinet.

### **Forward Vip**

The forward VIP has a centerline queen berth with cedar-lined storage below accessed by gas cylinders. Generous hanging lockers and drawers. There is an Italian hand carved framed mirror and Maglite pearl linen wall coverings. The comforter & pillow shams are hand painted silk. Carpeted flooring & Samsung 32” HD TV and sound system The ensuite bathroom and shower have Mica wall covering with Mother of Pearl tile, incorporating marble accents. Marble flooring - counter tops are Calcutta marble.

### **Vip port side guest stateroom**

The VIP guest stateroom to port has a walk around queen berth with storage below, carpeted flooring, Maya Romanoff wall covering and custom wood veneer sconce lamps. Samsung 32” HD TV. Ample storage in closet and drawers. The bathroom has marble flooring, with quartzite shower and counter tops.

### **Starboard guest stateroom**

The starboard guest stateroom features cross over single berths with fabrics by Duralee. The bathroom features marble flooring, quartzite counter tops and splashboard. This *cozy cabin* also has 32” Samsung HD TV and plenty of storage

### **Crew Quarters Aft**

Accessed thru transom door or thru aft deck stairwell. There are two separate cabins, one with walk around queen berth -- the other with upper & lower bunks. They share a head & shower. A crew lounge is featured with refrigerator/ freezer and microwave/convection oven -- 22” Samsung HD TV. Washer/Dryer

### **Engine Room**

This most impressive walk in/stand up engine room is spotless and houses the twin **1600 hp. Caterpillar C-32 Acerts with 1240 total hours. The twin 27.5 Onan Generators have 1370 port/1440 Starboard hours** -- all service requirements current, with records in captain’s log



- Hydraulic 35 hp. bow thruster -- stern thruster
- American Bow Thruster Track stabilizers with 7.5 square fins
- 2 Chilled water A/C compressors
- 6 DC 24 volt sump pumps
- 230 volt AC freshwater pump with spare
- 230 volt AC sewage pump plumbed for dockside pump-out.
- 110 volt AC oil change system -- 24 volt electric fuel primers
- Gray and black water tanks w/ 230 volt AC sewage pump out
- FM200 fixed fire extinguishing system
- Raycor fuel filters mains & generators
- Breath Easyair purifiers on all interior air handlers
- H2O reverse osmosis water maker -- 1500 gallons per day
- 3 sets underwater lights

### **Forward Deck**

- custom bow deck seating
- 4000 lb. hydraulic Maxwell anchor windless with deck mounted controls
- 110 lb. plow anchor -- stainless steel anchor chute and roller
- Dual 100 amp and 50 amp shore cord connections
- Fresh & salt water wash down
- Marquipt Tide Ride 8 step sea stairs

**LEXUS LADY** is in the top echelon of yachts we have had the privilege of representing in the 45 plus years of yacht brokerage. Having sold her new (as Varsity Jacket) we can attest to approximately \$1,500,000 of upgrades and optional equipment. A list of \$500,00 plus in recent improvements is available. An extreme pleasure to show, she is meticulously maintained throughout. Located in Fort Lauderdale.

## Исключения

---

При продаже яхты исключаются личные вещи владельца.

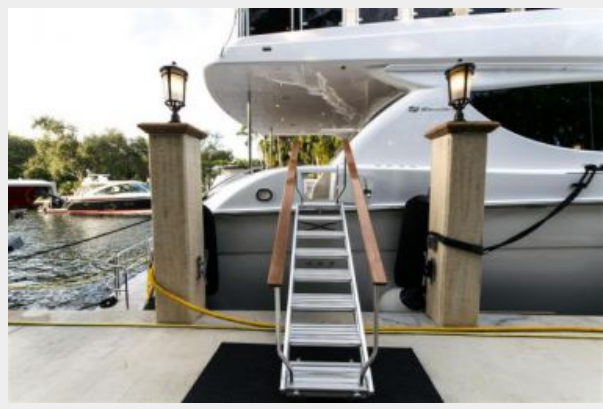
## Отказ от ответственности

---

Компания предоставляет описание судна или яхты добросовестно, но не может гарантировать точность этой информации, а также не ручается за техническое состояние. Покупатель должен проинструктировать своих агентов или оценщиков исследовать представленную информацию более подробно, по собственному желанию. Продажа судна или яхты, изменение цены или снятие с продажи будет происходить без предварительного уведомления.

# ФОТОГРАФИИ

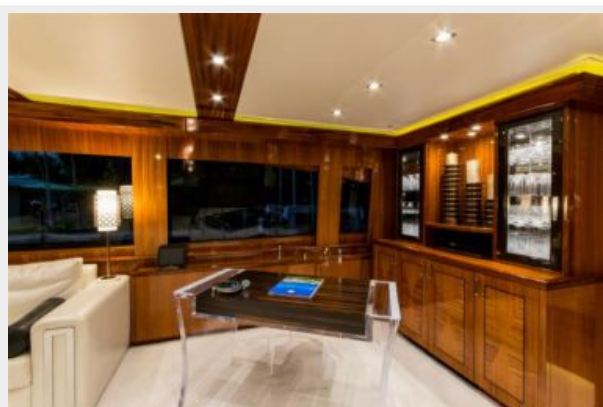












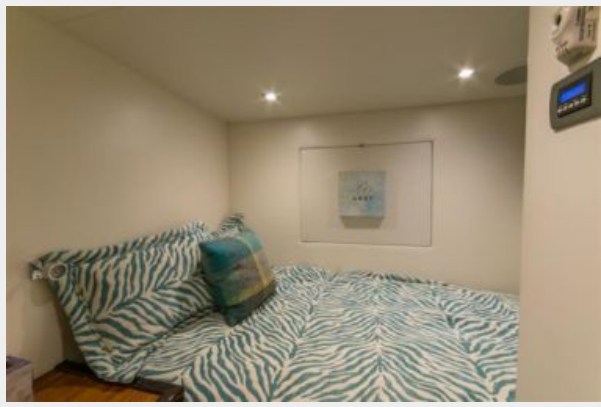














# КОНТАКТЫ

---

Андрей Шестаков (Andrey Shestakov) – ведущий яхтенный брокер отдела продаж яхт и судов компании Shestakov Yacht Sales Inc. Официальный представитель Shestakov Yacht Sales Inc. для русскоговорящих клиентов в центральном офисе компании в Майами/Форт Лодердейл/Флорида/США.

## Контактная информация

---

Email: [andrey@shestakovyachtsales.com](mailto:andrey@shestakovyachtsales.com)

Web: [shestakovyachtsales.com](http://shestakovyachtsales.com)

## Телефоны

---

Краснодарский край: **+7(918)465-66-44**

США, Майами, Флорида: **+1(954)274-4435**

## Время работы

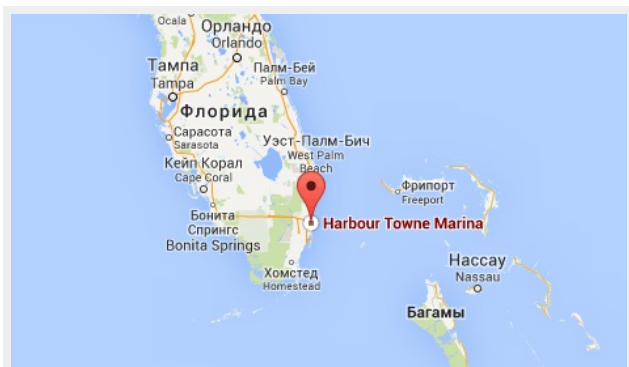
---

Понедельник – Суббота: **9:00 - 21:00**  
EDT

Воскресенье: **Закрито**

## Адрес

---



Harbour Towne Marina, 850 NE 3rd St,  
STE 213, Dania, FL 33004