

KALEIDOSCOPE — LAZZARA



Судостроитель: LAZZARA

Год постройки: 2001

Модель: Моторная яхта

Цена: **ЦЕНА ЯХТЫ ПО ЗАПРОСУ**

Местонахождение: United States

Длина общая: 80' 0" (24.38m)

Ширина: 19' 1" (5.82m)

Мин. осадка: 4' 6" (1.37m)

Крейс. скорость: 22 Kts. (25 MPH)

Макс. скорость: 26 Kts. (30 MPH)

Купить **KALEIDOSCOPE — LAZZARA** а также выбрать подходящую вам яхту из нашего каталога яхт вам поможет опытный яхтенный брокер Андрей Шестаков. На сегодняшний день компания **Shestakov Yacht Sales Inc.** имеет большое количество яхт в собственном списке продаж, а также тесно сотрудничает со всеми крупными яхтенными производителями по всему миру.

Для того чтобы купить яхту **KALEIDOSCOPE — LAZZARA** а также проконсультироваться по любому вопросу связанному с покупкой, продажей, чартером яхт позвоните по телефону **+7(918)465-66-44**.

ОГЛАВЛЕНИЕ

ОГЛАВЛЕНИЕ	2
ХАРАКТЕРИСТИКИ	4
Обзор	4
Основная информация	4
Размеры	4
Скорость, вместимость и масса	4
Размещение	5
Корпус и палуба	5
Информация о двигателе	5
ПОДРОБНОЕ ОПИСАНИЕ	6
Recent Improvements	6
Salon	6
Formal Dining Area	6
Galley	7
Master Stateroom	7
VIP Staterooms	7
Captains Quarters	7
Crew Quarters	8
Skylounge	8
Electronics	8
Mechanical	8
Deck Equipment	9
Исключения	10
Отказ от ответственности	10
ФОТОГРАФИИ	11
КОНТАКТЫ	19
Контактная информация	19
Телефоны	19

Время работы	19
Адрес	19

ХАРАКТЕРИСТИКИ

Обзор

Kaleidoscopes layout includes three staterooms amidships and two additional cabins forward that can be used either for the crew or additional guests. All Staterooms include en-suite heads. This 80' affords its owners an enclosed sky-lounge. If you are looking for the best of two worlds, this yacht provides optimum choices. The wonderful country kitchen design is one of the many fabulous entertaining areas for you and your guests. She is richly appointed with all the best Lazzara Yachts has to offer that generally are found on a much larger vessel. Coupled with an open checkbook owner for the last 10 years, this is a yacht you and your family will enjoy for many seasons. The décor is in beautiful neutral colors with gold accents ready for you personal touches.

Основная информация

Тип судна: Моторная яхта

Модельный год: 2001

Год постройки: 2001

Страна: United States

Размеры

Длина общая: 80' 0" (24.38m)

Ширина: 19' 1" (5.82m)

Мин. осадка: 4' 6" (1.37m)

Скорость, вместимость и масса

Крейс. скорость: 22 Kts. (25 MPH)

Макс. скорость: 26 Kts. (30 MPH)

Вместимость воды: 350 Gallons

Объем топливного бака: 2350 Gallons

Размещение

Всего кают: 5	Спальные места: 6
Всего ком. состава: 5	Каюта капитана: Да
Каюты экипажа: 2	Койки экипажа: 2
Спальных мест экипажа: 4	Комм. состав экипажа: 2

Корпус и палуба

Материал корпуса: Fiberglass	Материал палубы: Teak
Отделка корпуса: Aluminum	

Информация о двигателе

Двигатели: 2	Производитель: MTU
Модель: 12V183	Тип двигателя: Inboard
Тип топлива: Diesel	

ПОДРОБНОЕ ОПИСАНИЕ

Recent Improvements

- Hydraulic swim platform (90k)
- Dec '15: New anchor swivel
- Dec '15: New 8 Person Life Raft
- Nov '15: All upholstery replaced on aft and fore deck & Skylounge
- Nov '15: New Air Conditioning pump
- Oct. '15: Stbd. Davit rebuild
- Oct '15: Rebuild Oil Change pump
- Aug '15: Full service tender Yamaha
- July '15: Rogue WIFI Antenna / router installed
- June '15: New Isis Computer
- May '15: New VHF radio
- April '15: New fresh water pump
- April '15: Bottom paint / polish
- August '14: Stbd. vip Air Conditioner Compressor replaced
- June '14: Water Maker Membranes replaced
- April '14: New Galley Condensing unit
- Recardo heated seats
- 4 refrigerators
- 3 ice makers

Salon

Upon entering KALEIDOSCOPE you are greeted by a spacious layout that offers numerous entertaining options. A comfortable seating arrangement includes a spacious leather sofa and two barrel chairs covered in designer ultra-suede fabric, accompanied by custom cocktail tables. Extending from the port side is a unique custom designed complete entertainment center consisting of Sony television, multi-DVD player, VHS player and complete around sound amplifier equipment. Also starboard, a custom bar cabinet. All accessories and coordinates are in custom designer fabrics.

Formal Dining Area

Forward of the Salon is the formal Dining area highlighted by a birds-eye maple wood table. Six dining chairs, mirrored bulkhead and glass display case. Marble counter tops and ample storage for china, wine, linens, etc.

Galley

Forward of the salon you are greeted by a spacious country kitchen style lay-out. The galley is highlighted by corian counter tops, wood floors, and a raised kitchen table w/ bench seating for 6 people. Wing doors both port & stbd make entry to the foredeck and line handling easily accessible. Galley Appliances

- Kitchen Aid Side by side refrigerator/ freezer
- Kitchen Aid 4 burner stovetop
- Kitchen Aid Convection over and microwave
- Kitchen Aid trash compactor
- Dual stainless steel sinks
- Ice maker
- Hot water dispenser
- New Galley condensing unit 2014

Master Stateroom

The Master Stateroom Suite will surely be inviting after a day of fun. Relax on a king size bed adorned in custom fabrics, accessories, and window treatments or relax on a settee with a good book. This room also includes vanity, chair and on the starboard side of the suite, walk-in closet with a safe, entertainment center, large mirrors, beautiful lamps, and his and her armoires. The Master Head has a built-in Jacuzzi tub with two showerheads, his/her sinks. To complete the room there is beautiful marble countertops, flooring and ample storage space for linens and toiletries.

VIP Staterooms

Both VIP Staterooms have queen size beds covered in custom bedding and fabrics. There is ample under bunk drawer storage, cedar-lined hanging locker and a complete entertainment center for your guests pleasure. The en-suite heads are beautifully finished with marble tops and flooring, sink, gold fixtures, toilet and shower stall.

Captains Quarters

Full size raised berth w/ storage beneath. Lacquered cabinets of which includes the entertainment center and a cedar lined hanging locker with mirrored door. There is also a captains office that includes a ISIS monitoring system. A wall mounted reading light, indirect lighting, and upholstered jump seat allow for ample lighting. The en-suite head offers a under hung sink w/ corian countertops, enclosed shower stall, mirrored cabinet and toilet.

Crew Quarters

Full size raised berth with storage beneath. Lacquered cabinets one which includes the entertainment system (TV, VCR, AM/FM stereo, with C/D player). Cedar lined hanging locker with mirrored door; wall mounted reading light; jump seat upholstered with Majilite; carpeting and indirect lighting. The en-suite head offers under hung sink with Corian countertop, enclosed shower stall, shampoo rod holder, mirrored cabinet and marine toilet.

Skylounge

The Sky Lounge has access from the aft deck stairway or Galley. A full complement of computers, communications, and navigational equipment make her a state-of-the-art vessel. The helm area has two Recaro electric captain chairs with footrests. Port and starboard side windows slide back manually allowing fresh air to circulate in the room. To the starboard is an island/desk and electrically operated up and down television in a console. Occasional chairs flank the console. A Electrically operated L-shaped three-cushion lounge that converts to a full bed was also installed. Console with refrigerator. Through a sliding glass door is the sundeck area, which serves as another great place to entertain. Table and L-shaped lounge/sunning pad, electric grill, twin concealed davits and dinghy.

Electronics

- Robertson AP20 autopilot w/ remote handset on flybridge
- Simrad Anritsu radar 96-mile color
- Furuno FCV-528L color radar 24 miles/ sounder
- New ISIS computer monitoring system of 64 vital functions 2015
- New Rogue WiFi 2015
- Sea Recovery Reverse osmosis system
- Port and stbd wipers
- Northstar 951X GPS Navigator
- Nobletec NAV navigation system with a dedicated Dell computer
- Datamarine multi-link sounder
- New (2) VHF radios 2015
- Hailer
- KVH Trac SAT phone
- Mathers Clear Command controls
- Stabilizer controls

Mechanical

- Acoustical and thermal insulation in engine room
- Twin diesel MTU 1150 hp engines

- Fresh water-cooled with reduction gearing
- Microphor compressed air toilet system
- Freshwater wash down system
- (2) 20 kW Onan generators
- Seacocks, underwater thru hulls bronze
- Cruisair air conditioner with reverse cycle
- New A/C pump 2015
- New Freshwater Pump 2015
- Fire alarm system, manual & automatic
- Electronic engine controls
- Oil transfer system
- Rebuilt oil change pump 2015
- Dual Racor fuel filters, main engines
- Single Racor fuel filters, generator
- Fuel priming pumps for engines and generators
- Holding tank with access for pump out
- (2) 230V engine room blowers
- Hydraulic trim tabs, recessed in hull
- Electric bow thruster
- LSR shrouded rudder & drive unit, SS
- Underwater main engine exhaust with idle bypass
- (4) Fins stabilizers
- (4) Bilge pumps
- Sea Recovery 40 gal/hr. water maker
- Central vacuum system
- Engine cooling systems, serviced 2012
- New batteries, 2012

Deck Equipment

- Anchor chute, stainless steel
- New Anchor Swivel
- Electric anchor windlass, vertical with chain stopper
- 3 Anchors
- Hinged boarding gates in bulwark
- Bow, spring and stern cleats
- Deck hatch
- Fiberglass bulwarks and SS stanchions
- Deck fills: water and waste removal
- Fuel fill behind vent grill in hullside
- Dockside water connection
- Deck and hull white gel coat
- Marquipt sea stairs and ladder

- New 8 person life raft

Исключения

При продаже яхты исключаются личные вещи владельца.

Отказ от ответственности

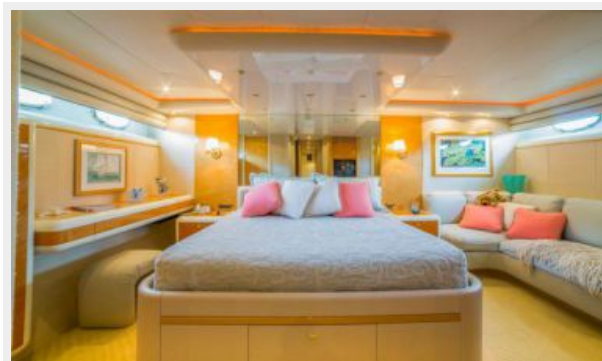
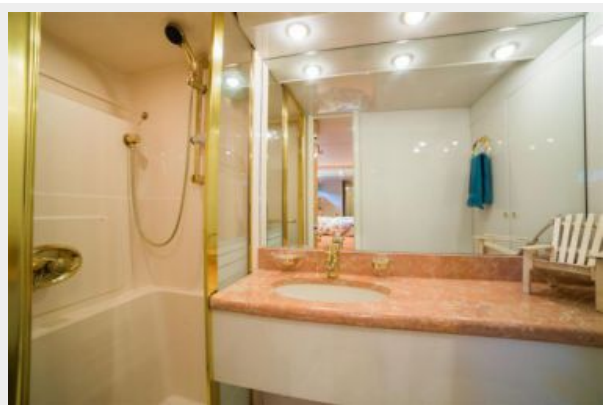
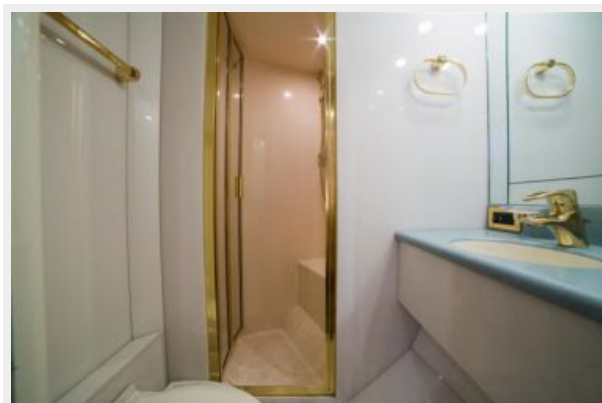
Компания предоставляет описание судна или яхты добросовестно, но не может гарантировать точность этой информации, а также не ручается за техническое состояние. Покупатель должен проинструктировать своих агентов или оценщиков исследовать представленную информацию более подробно, по собственному желанию. Продажа судна или яхты, изменение цены или снятие с продажи будет происходить без предварительного уведомления.

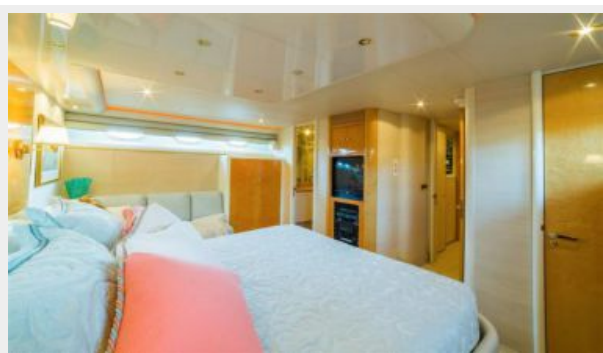
ФОТОГРАФИИ

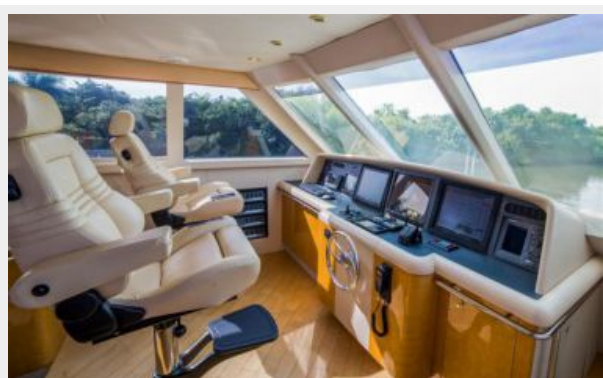


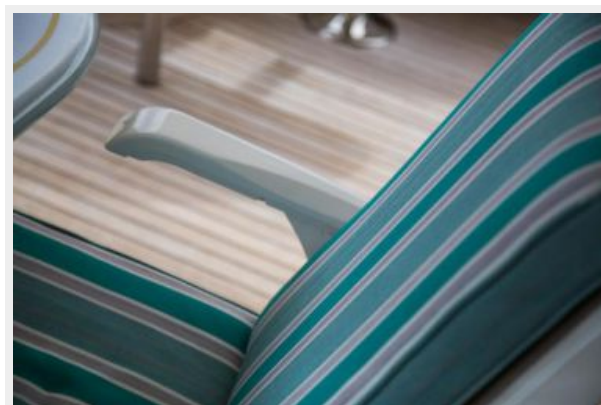
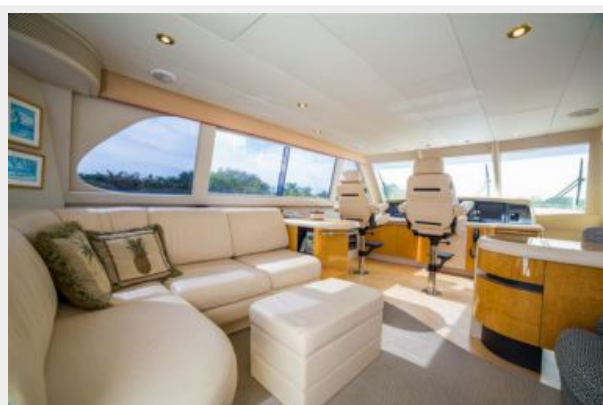


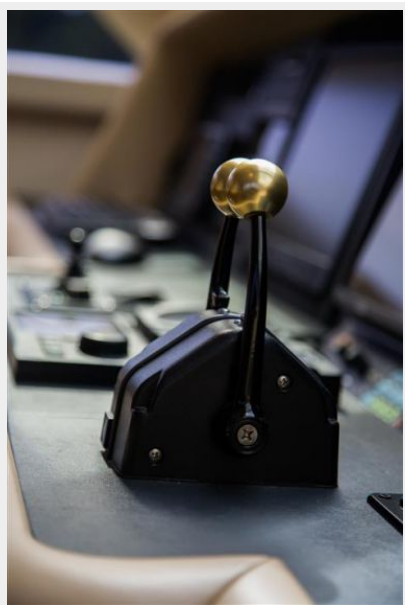












КОНТАКТЫ

Андрей Шестаков (Andrey Shestakov) – ведущий яхтенный брокер отдела продаж яхт и судов компании Shestakov Yacht Sales Inc. Официальный представитель Shestakov Yacht Sales Inc. для русскоговорящих клиентов в центральном офисе компании в Майами/Форт Лодердейл/Флорида/США.

Контактная информация

Email: **andrey@shestakovyachtsales.com**

Web: **shestakovyachtsales.com**

Телефоны

Краснодарский край: **+7(918)465-66-44**

США, Майами, Флорида: **+1(954)274-4435**

Время работы

Понедельник – Суббота: **9:00 - 21:00**
EDT

Воскресенье: **Закрыто**

Адрес



Harbour Towne Marina, 850 NE 3rd St,
STE 213, Dania, FL 33004