

## SEA ANGEL — ENDEAVOUR



**Builder:** ENDEAVOUR

**Year Built:** 1990

**Model:** Motorsailor

**Price:** PRICE ON APPLICATION

**Location:** United States

**LOA:** 54' 0" (16.46m)

**Beam:** 15' 9" (4.80m)

**Max Draft:** 4' 11" (1.50m)

**Cruise Speed:** 8 Kts. (9 MPH)

**Max Speed:** 10 Kts. (12 MPH)

Our experienced yacht broker, Andrey Shestakov, will help you choose and buy a yacht that best suits your needs **Sea Angel — ENDEAVOUR** from our catalogue. Presently, at Shestakov Yacht Sales Inc., we have a wide variety of yachts available on our sale's list. We also work in close contact with all the big yacht manufacturers from all over the world.

If you would like to buy a yacht **Sea Angel — ENDEAVOUR** or would like help answering any questions concerning purchasing, selling or chartering a yacht, please call **+1(954)274-4435**

# TABLE OF CONTENTS

---

TABLE OF CONTENTS	2
SPECIFICATIONS	4
Overview	4
Basic Information	5
Dimensions	5
Speed, Capacities and Weight	5
Accommodations	5
Hull and Deck Information	6
Engine Information	6
DETAILED INFORMATION	7
Broker Comments	7
Accommodations	8
Galley	8
Mechanical/Engine room	9
Electronics	9
Sails & Rigging	10
Deck & Hull	10
Electrical	10
Exclusions	11
Exclusions	11
Disclaimer	11
PHOTOS	12
Foredeck view	12
Custom Upholstery	13
Salon view from galley	13
Salon view looking aft	14
Galley	14
new Propane stove/oven	14

---

Galley view 2	14
New 12V refrigeration system	15
Master cabin aft	15
Enlarged centerline queen berth	15
Side seats and dressers	16
Guest berth forward	16
view 2	16
view 3	17
Bow thruster	18
Bow view	19
Owner's personal belongings Tools	19
Starboard view	19
Hardtop	20
Aft cockpit and TNT lift	21
Swim Platform on TNT lift	21
Aft cockpit	21
Port view	21
RIB Dinghy on TNT lift	21
CONTACTS	22
Contact details	22
Telephones	22
Office hours	22
Address	22

---

# SPECIFICATIONS

---

## Overview

---

*Seaworthy and Luxurious Motor Sailer! Repowered with Twin 75 hp Yanmars 2007, \$180K Complete Retrofit 2008 - 2015, New Standing Rigging and Raymarine Electronics Package 2017 and much more! Charter potential! Fresh bottom paint. "Sea Angel" should be given your strong consideration! Must see! Swiss flagged and US Import Duty is paid, ready for sale to a US buyer. Ready to provision and go!!! Great consideration and expense was given to the complete retrofit of the mechanical, safety, practical and self-sustaining systems as well as the interior appointments. Full complete records and logs.*

*Her gorgeous interior with beautiful woodwork and many custom features make her feel like a true home. From the moment you step on the first high gloss varnished step to the elegant and tastefully decorated interior, you will appreciate the upgrades and updates the owners have given her.*

### Recent upgrades include:

- **NEW 2017 Comprehensive Raymarine Electronics system**
- **NEW 2017 Standing Rigging**
- **2007 REPOWERED with Twin 75hp Yanmars, 2000 hours**
- **Upgraded heavy anchor gear with all chain rode**
- **2014 Watermaker**
- **2015 New Batteries**
- **2016 New Battery Charger**
- **2014 Change to 12V Refrigeration system, 3 units**
- **2015 Propane stove/oven**
- **2015 New heads**
- **New teak and holly sole 2014**
- **New custom upholstery 2014**
- **Enlarged master berth to centerline queen**
- **New fixed ports and hatches 2015**
- **Upgraded galley to include a 3 unit 12V Refrigeration system**
- **Liferaft Current**
- **SSB 2015**
- **Iridium Sat Phone 2015**

### Other great features include:

- **8kw Generator**
- **2 Solar Panels and controller**
- **Air conditioning**
- **Electric Winches**

- **Roller Furling**
- **Bow thruster**
- **huge fuel and water tankage**
- **2014 Washer/dryer**
- **TNT dingy lift with swim platform**
- **2005 RIB Dingy and 15 hp Outboard**
- **4' 11" draft**
- **62' Bridge Clearance**
- **Fully enclosed center cockpit with hardtop**
- **Aft cockpit with access from master cabin**

---

## Basic Information

---

**Category:** Motorsailor

**Sub Category:** Cruising Sailboat

**Model Year:** 1990

**Year Built:** 1990

**Country:** United States

---

## Dimensions

---

**LOA:** 54' 0" (16.46m)

**LWL:** 43' 10" (13.36m)

**Beam:** 15' 9" (4.80m)

**Max Draft:** 4' 11" (1.50m)

**Clearance:** 62' 0" (18.90m)

---

## Speed, Capacities and Weight

---

**Cruise Speed:** 8 Kts. (9 MPH)

**Max Speed:** 10 Kts. (12 MPH)

**Displacement:** 50000 Pounds

**Water Capacity:** 300 Gallons

**Holding Tank:** 30 Gallons

**Fuel Capacity:** 350 Gallons

---

## Accommodations

---

**Total Cabins:** 3

**Total Heads:** 2

---

## Hull and Deck Information

---

**Hull Material:** Fiberglass

## Engine Information

---

**Engines:** 2

**Manufacturer:** Yanmar

**Model:** 4JH3-TE

**Engine Type:** Inboard

**Fuel Type:** Diesel

---

# DETAILED INFORMATION

---

## Broker Comments

---

*"Sea Angel" should be given strong consideration! Major refit and Repower! If it is on your wish list, it is on this vessel! Offers Encouraged. Price reduced for immediate sale! Great Opportunity to own a Seaworthy and Luxurious Motor Sailer! Repowered with Twin 75 hp Yanmars 2007, Complete Retrofit 2008 - 2015, New Standing Rigging and Raymarine Electronics Package 2017 and much more! Great consideration and expense was given to the complete retrofit of the mechanical, safety, practical and self-sustaining systems as well as the interior appointments.*

*Her gorgeous interior with beautiful woodwork and many custom features make her feel like a true home. From the moment you step on the first high gloss varnished step to the elegant and tastefully decorated interior, you will appreciate the upgrades and updates the owners have given her.*

### Recent upgrades include:

- **NEW 2017 Comprehensive Raymarine Electronics system**
- **NEW 2017 Standing Rigging**
- **2007 REPOWERED with Twin 75hp Yanmars, 2000 hours**
- **Upgraded heavy anchor gear with all chain rode**
- **2014 Watermaker**
- **2015 New Batteries**
- **2016 New Battery Charger**
- **2014 Change to 12V Refrigeration system, 3 units**
- **2015 Propane stove/oven**
- **2015 New heads**
- **New teak and holly sole 2014**
- **New custom upholstery 2014**
- **Enlarged master berth to centerline queen**
- **New fixed ports and hatches 2015**
- **Upgraded galley to include a 3 unit 12V Refrigeration system**
- **Liferaft Current**
- **SSB 2015**
- **Iridium Sat Phone 2015**

### Other great features include:

- **8kw Generator**
- **2 Solar Panels and controller**
- **Air conditioning**
- **Electric Winches**
- **Roller Furling**

- **Bow thruster**
- **huge fuel and water tankage**
- **2014 Washer/dryer**
- **TNT dingy lift with swim platform**
- **2005 RIB Dingy and 15 hp Outboard**
- **4' 11" draft**
- **62' Bridge Clearance**
- **Fully enclosed center cockpit with hardtop**
- **Aft cockpit with access from master cabin**

---

## Accommodations

---

- Designed with luxurious interior appointments and 3 cabin/2 head layout. Starting forward is the Guest Stateroom which has a double berth, an upholstered side seat and generous drawers and hanging locker space. To starboard is over/under bunk room which can also serve as a workshop. These cabins share a large head with separate shower stall on the port side. This forward section of the boat also houses the stacked washer/dryer as well as the door to the walk-in engine room. Up two steps is the full beam Main Salon which features a large U shaped settee with custom upholstery, a custom circular drop leaf dining table, semi circular end table. The high gloss teak and holly sole is new. The port side boasts a marble top Entertainment center with wet bar and wine rack and 2 side chairs for lounging and an aft facing navigation station at the base of the companionway. The walk through galley to starboard has been fully re-fit and is equipped to please the most discriminating chef. The Master Stateroom can be accessed through the galley or from the separate door from the aft cockpit. This spacious Master cabin has an enlarged centerline queen bed, cedar lined lockers and plenty of dresser drawers and cabinets and ensuite head with shower stall.
- Large wrap around U shaped Settee with New upholstery
- Custom high gloss teak dining table
- Teak and Holly flooring new
- Large salon fixed ports new 2015
- Custom window treatments, wooden blinds
- Wet bar and Entertainment Center
- New stereo system 2015
- Ice maker in salon
- Splendide Washer/dryer 2005
- Plentiful storage throughout

---

## Galley

---

- NEW 2014 3 separate 12V refrigeration systems Frigoboat
- (2) front loading Refrigerators and (1) top loading Freezer



- Ice maker in salon
- 3 burner Propane stove with oven NEW 2015
- New counter tops
- Double stainless steel sink
- Abundant storage in numerous cabinets

---

## Mechanical/Engine room

---

- TWIN REPOWERED 2007 Yanmar 4JH3-TE 75hp engines (2000, 1800 hrs)
- Engine room access thru separate door in passageway or under salon sole with gas assist struts
- Wesmar bow thruster
- 350 Gallon fuel capacity (fiberglass)
- (3) Cruisair Reverse Cycle Air Conditioning units
- Watermaker 2010
- Splendide Washer/Dryer 2005
- Raritan Electric head aft New 2015
- Macerator
- Manual head fwd New 2015
- 350 Gallon fiberglass water tanks
- 20 Gallon GE Water heater
- Hynautic Hydraulic Wheel steering
- 2 Rule Automatic Bilge Pumps
- 1 Jabsco Diaphragm Bilge Pump
- 1 Manual Bilge Pump
- Halon 1301 Auto/Manual Fire System
- High Water Alarm
- Y-Valve and holding tank
- Raw water strainers for A/C, engines and genset

---

## Electronics

---

- NEW Raymarine Comprehensive Electronics system 2017
- SSB New 2015
- Iridium Sat phone new 2015
- Autopilot
- Depth
- GPS
- Chartplotter
- Radar
- VHF
- Compass

---

## Sails & Rigging

---

- Sails in good condition
- In Mast Furling Main New 2005
- Roller furling Genoa new 2005
- Stainless Steel Standing Rigging NEW 2017
- (2) Barient 28ST Electric Primary Winches
- (1) 17 ST 2 speed Mainsheet winch
- (1) 21 ST 2 speed outhaul winch
- (1) 21 ST 2 speed main halyard winch
- (1) 22 ST 2 speed
- Genoa halyard winch
- Traveller
- Aluminum mast and boom
- All lines lead to cockpit

---

## Deck & Hull

---

- Current Liferaft on bracket
- Quick Electric Windlass NEW 2015
- Double anchor roller
- 60# Bruce Anchor, 300' of chain
- 60# CQR Anchor, 150' of chain
- Salt water wash down
- Aft cockpit has lazerette seating with cushions
- TNT Dingy Lift with platform
- RIB 2005 Dingy
- Mercury 15hp outboard 2013
- new heavy SS stern cleats
- Fully enclosable cockpit with new eisenglass
- Hardtop with large opening plexiglass hatch
- Cockpit cushions New 2014
- Teak entrance door and companionway door
- Stainless Bow pulpit
- Double lifelines
- Stainless grab rails
- Stainless stanchions
- 5 Deck hatches with screens and covers

---

## Electrical

---

- Kohler Generator

- Battery Charger NEW 2016
- (2) Solar Panels
- (4) 6V House bank batteries NEW 2015
- (3) starting batteries NEW 2015
- 50 amp Shorepower cord and inlet
- AC/DC Breaker panel
- AC and DC lights throughout

---

## Exclusions

---

- Owner's personal belongings
- Tools

---

## Exclusions

---

Owner's personal belongings.

---

## Disclaimer

---

The Company offers the details of this vessel or yacht in good faith but cannot guarantee or warrant the accuracy of this information nor warrant the condition of the vessel. A buyer should instruct his representatives, agents, or his surveyors, to investigate such details as the buyer desires validated. This vessel or yacht is offered subject to prior sale, price change, or withdrawal without notice.

# PHOTOS



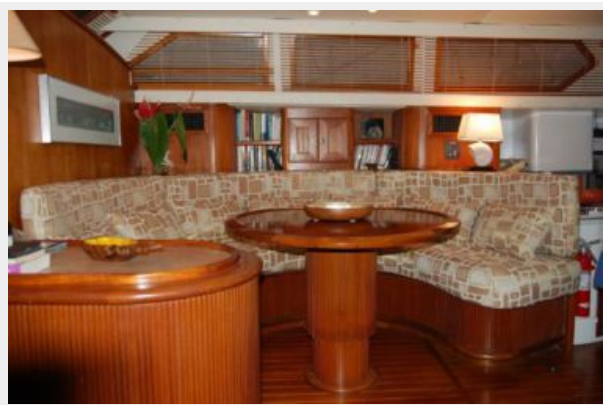
**Foredeck view**





**Custom Upholstery**

**Salon view from galley**



**Salon view looking aft**



**Galley**



**new Propane stove/oven**



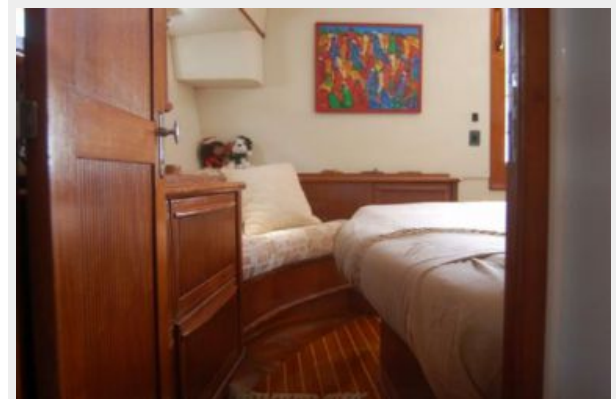
**Galley view 2**



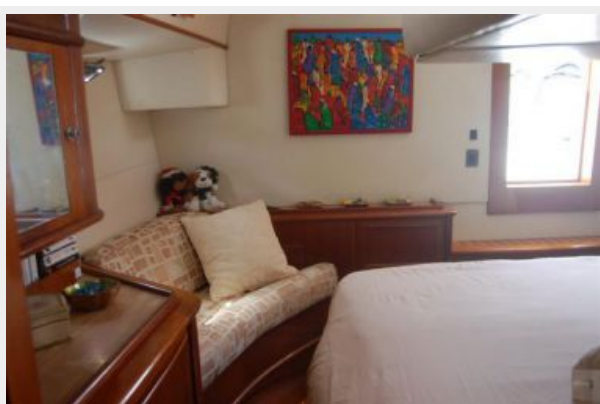
### New 12V refrigeration system



### Master cabin aft



### Enlarged centerline queen berth



**Side seats and dressers**



**Guest berth forward**



**view 2**





view 3





### Bow thruster





**Bow view**



**Owner's personal belongings Tools**

**Starboard view**





### Hardtop



**Aft cockpit and TNT lift**



**Swim Platform on TNT lift**



**Aft cockpit**



**RIB Dinghy on TNT lift**



**Port view**



# CONTACTS

---

Andrey Shestakov, leading yacht broker of the sales department of Shestakov Yacht Sales Inc. Shestakov Yacht Sales Inc., the official representative of the Miami/Fort Lauderdale FL headquarters.

## Contact details

---

Email: [andrey@shestakovyachtsales.com](mailto:andrey@shestakovyachtsales.com)

Web: [shestakovyachtsales.com/en/](http://shestakovyachtsales.com/en/)

## Telephones

---

USA: +1(954)274-4435

## Office hours

---

Monday – Saturday: **9:00 - 21:00** EDT

Sunday: **closed**

## Address

---



Harbour Towne Marina, 850 NE 3rd St,  
STE 213, Dania, FL 33004